



# Oakley Newsletter

**THE FINAL CONSULTATION ON THE  
DRAFT OAKLEY NEIGHBOURHOOD PLAN  
WILL TAKE PLACE FROM  
19<sup>TH</sup> SEPTEMBER TO 31<sup>ST</sup> OCTOBER**



**FEEDBACK FORMS ARE BEING DELIVERED WITH  
THIS NEWSLETTER AND ARE ON THE WEBSITE AT  
<https://oakleyvillage.co.uk/ndp>**

**COPIES OF THE DRAFT PLAN ARE ON THE WEBSITE  
AND IN THE POST OFFICE, CHURCHES  
AND THE BEDFORD ARMS**

**SEE ARTICLE ON PAGE 17 FOR MORE DETAILS**

Picture replaced at the request of the Parish Council.

### The Oakley Newsletter

is published quarterly by Oakley Parish Council and delivered by parish councillors free to every house in Oakley – about 1,000 copies.

### Opinions and information

in the Newsletter, both text and adverts, may not be endorsed by the Editor or the Parish Council.

### Next issue

Final copy date for the Winter issue is 23 November 2018.  
The publishing date is 1st December 2018.

### Advertising rates

Colour Advertisements  
Quarter page: £30

Half page: £60

Whole page: £120

Four consecutive quarter page adverts - discount 10%

Black & white advert rates are available upon request.

Loose inserts, any size up to A4: £100  
Invoices will be issued by Ann Paice, with payment to Oakley Parish Council.

### Editor

Bill Chalker  
13 Beverly Close  
Oakley  
MK43 7SH  
07789 997733  
bill@chalker.uk.net

### Printers

White Hart Press  
58a York Street  
Bedford MK40 3RL



### Hello Chil-

look out for  
Nine more



dren

# Parish Council News

## Autumn 2018

By PAUL PHILLIPS (Chair)

Hello Everyone

In our summer edition of the newsletter I remember talking about our wet spring but went on to say that we should put that behind us and hope that our summer is going to be a good one. That now seems something of an understatement and the sunshine we have had for two months or more has been exceptional. Eating outside, be it breakfast, lunch or dinner, has become the norm for us. How nice it is, and may it continue for a little while longer.

### New development at Parrott's Yard, Lovell Road, Oakley.

Bedford Borough Council has decided to name this development/road PARROTT CLOSE and communicated their decision to the Royal Mail. The Parish Council quickly expressed the view that the plot has, for many years, been known as Parrott's Yard and felt it may be more appropriate to call it Parrott's Close. The response from Bedford Borough Council was that the Royal Mail do not accept apostrophes in road names. The Parish Council responded saying that the apostrophe could be left out like many other roads inside and outside the village, but our pleas were not accepted. As a consequence, this road will be called PARROTT CLOSE.

### Christmas Lights Switch on and Carols

The Christmas lights switch on and carols will take place at St Marys Church on Saturday 1 December 2018 at 5pm. Please make a note of this date now. This is a super way to start our preparations for Christmas.



### Village Planting.

Despite the hot and sunny weather, the village planting looked lovely for many weeks and, on your behalf, I would like to publicly express our gratitude to Elspeth who voluntarily undertakes to carry out this planting for our benefit. All of the beds have been

Continued on page 3

## OAKLEY PARISH COUNCIL

### PARISH CLERK

**Ann Paice**  
31 Radwell Road  
Milton Ernest  
Bedford, MK44 1SH.  
824852  
parishclerk@oakleyvillage.co.uk

### CHAIR

**Paul Phillips**  
3 Station Road. 824260  
paulphillips65@gmail.com

### VICE CHAIR

**Jane Walker**  
(Parish and Borough councillor)  
11 Dewlands. 824530  
jane@janewalker.co.uk

### Pat Olney

(Parish and Borough councillor)  
33 Station Road. 824384  
pat.olney@btopenworld.com

### Jonathan Abbott

11 Lincroft 826335  
ma55ey35@gmail.com

### Sara Fardon

61 Lincroft. 824516  
sarafardon@yahoo.co.uk

### Michael Frampton

The Little House, The Drive  
822181  
michael\_frampton@btinternet.com

### Phyllis Jones

35 Ruffs Furze 910187  
phylmaj@gmail.com

### Stephen Nicholas

44, Grenidge Way 824345  
sbnicholas@aol.com

### Gerry Sansom

21 Pavenham Road.  
823295  
gerrysan-  
som@btinternet.com

### Robert Saunders

College Farm. 822328  
rjsaunders5591@gmail.com

### Paul White

20 Reynes Drive. 825472  
paulwhite20rd@gmail.com

very colourful. Thank you also to the other volunteers who regularly water the flowers. Should anyone else have a desire to add a watering can full from time to time, no one is going to stop you.



performing a valuable service which is benefitting the village and its residents. Our aim is to educate motorists and for them to avoid fines and in doing so make our roads safer for all.

Should you wish to get involved or indeed just want to obtain further information, then please contact me at [paulphillips65@gmail.com](mailto:paulphillips65@gmail.com) mobile 07968122301 or landline 012348244260 (I am not good at answering this though). Appropriate training will be given.

Bill has reproduced both sides of Bedfordshire Police speed watch leaflet on Page 4 of this Newsletter for further information.

### **Safeguarding of vulnerable individuals in the community**

Recently I attended a meeting at Bedfordshire Police Headquarters at Kempston during which we received a presentation showing how many vulnerable people are being exploited by criminals operating in gangs and as individuals.

It is incomprehensible that this type of thing can happen in our 'caring' society especially in idyllic Oakley. Hopefully it is not happening in Oakley but can you and I be sure? We proudly say we know our neighbours, but do we really?



### **Average speed cameras and speed watch**

Bedfordshire Police continue to enforce the average speed cameras and sadly some members of our society consider speed enforcement does not apply to them. These offenders are being caught regularly, particularly in Lovell Road, but also in other roads too.

In addition to the average speed cameras we are continuing to operate speed watch as often as we are able, dependent on the availability of volunteers. The scheme has been operating in Oakley for 12 months now and we thought that it might be appropriate to encourage a few more volunteers. Full details of the scheme are reproduced below, but what I would also add is that it does not need to be too time consuming and it can be seen as an enjoyable and social interlude in our rather hectic lives, but at the same time we are



The hand out given to us at this meeting is reproduced here on Page 5 and I would ask that everyone take a few minutes to read this article and report situations or circumstances that they think may amount to a safeguarding issue.

Once again thank you for reading this newsletter and thank you for your continued support. Thanks also go to all contributors and a huge thanks to our editor Bill Chalker for continuing to produce such an excellent publication.

Kind regards

Paul Phillips. Chair





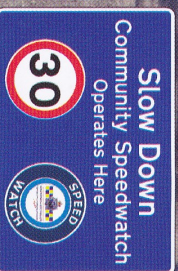
# BEDFORDSHIRE SPEED WATCH



Community Speed Watch is a scheme to help people reduce traffic speeding through their neighbourhood. Excessive speed has an impact not only on road safety but on the quality of life for those residents that endure it.

The scheme enables volunteers to work within their community to raise awareness of the dangers of speeding and to help control the problem locally. It can be set up in any ward, village or parish governed by a 20, 30 or 40 miles per hour speed limit.

Community Speed Watch seeks to promote safer driving in our local communities by educating, rather than prosecuting, individuals. Data collected by Community Speed Watch groups is passed to Bedfordshire Police who may undertake speed checks and result in drivers being prosecuted.



## VOLUNTEERS

Community Speed Watch requires a group of at least two trained volunteers to operate.

Having registered as a volunteer you will be offered a training course run by Bedfordshire Police which covers the use of the equipment, training in conflict resolution and an option for basic first aid if required.

The course can be arranged at various locations around the county and consists of two modules which last for a maximum of two hours.



IF YOU ARE INTERESTED PLEASE CONTACT ME -  
PAUL PHILLIPS ON 07968122301 OR paulphillips65@gmail.com

## SPEED CHECKS

Groups are provided with the necessary equipment by the police to run a Community Speed Watch session and the police control room should be notified prior one taking place.

Volunteers record details of any vehicles exceeding the speed limit and the results are forwarded to the police.

The registered keeper of the vehicle is then sent a letter informing them that the vehicle was detected exceeding the speed limit, giving the location, date and time. Persistent speeders receive a second letter and on a third occasion they can expect further action to be taken by the police.



Bedfordshire Speed Watch is supported by:

- Bedfordshire Police
- Bedford Borough Council
- Central Bedfordshire Council
- Luton Borough Council
- Bedfordshire Fire & Rescue Service



## Safeguarding of Vulnerable Individuals in the Community

*"A person is vulnerable if as a result of their situation or circumstances, they are unable to take care of, or protect themselves or others, from harm, exploitation or other adverse impact on their quality of life."*

### What makes someone Vulnerable?

- Equality and Diversity (race, age, gender, disability, religion, nationality, lifestyle choice etc)
- Economic Circumstance (Financial implications)
- Personal Circumstance (consumption/dependency upon drugs/alcohol)
- Repeat Victimisation (Not restricted to specific type of crime or ASB reported)
- Family Circumstance (child at risk, carer for vulnerable child or adult)
- Health (physical/mental/emotional well-being)

### What information do we want from you?

- |   |  |
|---|--|
| <ul style="list-style-type: none"> <li>- Is your neighbour vulnerable?</li> <li>- Do they need additional support?</li> <li>- Have they got family visiting them?</li> <li>- Burglaries – Commercial/Residential</li> <li>- Robberies – Commercial/Residential</li> <li>- Drug Supply/Production</li> <li>- Exploitation of Vulnerable Persons</li> <li>- Organised Crime</li> <li>- Vehicle Crime</li> </ul> | <p><b><u>THINK:</u></b></p> <ul style="list-style-type: none"> <li>- Who?</li> <li>- What?</li> <li>- When?</li> <li>- Where?</li> <li>- Why?</li> <li>- How?</li> </ul> |
|---|--|

### How do you report this to us?

- 101
- 999 (in emergencies only)
- <https://www.bedfordshire.police.uk/report/Report-Shared/Report-a-concern>
- Online Web Chat – use above link and click on green dot on right hand side of the page.
- Anonymously through Crimestoppers  
<http://crimestoppers-uk.org/give-information> or call 0800 555 111



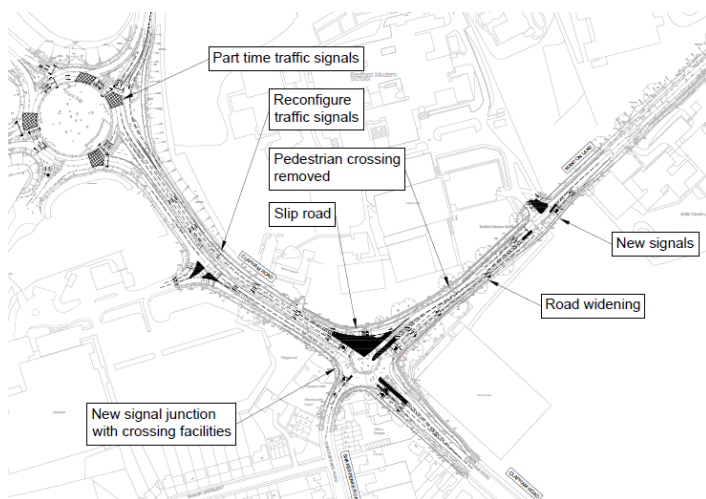


## Borough Council News

by Cllr Pat Olney

### Manton Lane Roadworks

Major works to help the congestion on Manton Lane have started. During August preparatory works have been carried out at the entrance to Bedford Modern School. During the works, as you know, temporary traffic lights are in place. This work will carry on in September and include resurfacing work in Manton Lane and from the Brickhill Drive traffic lights up to Kestrel Road.



There will be ongoing works at the Manton Lane and Sainsburys roundabouts during this year and early next year. Please visit [www.bedford.gov.uk/transportingbedford2020](http://www.bedford.gov.uk/transportingbedford2020) for more information.

### Bedford Borough Local Plan 2035

The revised Local Plan is to go to the Borough Executive on September the 5<sup>th</sup> and it will be available on the borough website by the time this magazine is published. Please go to the website for further information.

### Allhallows Carpark

This multi-story carpark is now open 24 hours a day. It will continue to be free after 6pm so you can continue to enjoy concerts, the theatre, cinema and restaurants with free parking in the evening.

### The Friends Group of Harrold-Odell Country Park

I know many people in the village volunteer at the country park and I am pleased to report that they have received the **Queens Award for Voluntary Service**. The volunteers have helped to maintain and improve the park including hedge laying, repairing benches, conservation work and creating leaflets that encourage everyone to enjoy the park even more. This a brilliant award for all the 2,500 hours that the volunteers have worked in 2017. Thank you to all of the volunteers for helping to keep this park well maintained for the enjoyment of everyone.

### The Higgins Bedford



Exhibitions to look forward to are; *The Young Turner: Ambitions in Architecture and the Art of Perspective* which is touring the region. It will be showing from the 22<sup>nd</sup> September to 16<sup>th</sup> December 2018. I am looking forward to this as it will be interesting to see how he developed as an artist. *Paved with Gold: Bedford's Windrush Generation* 6<sup>th</sup> October -24<sup>th</sup> March 2019 where you can explore the stories of our residents from the Caribbean who settled in Bedford. It will include their journey here, where they settled in Bedford, the employment opportunities and present a narrative of the challenges they faced and the contribution they made to Britain.

Please go to [www.thehigginsbedford.org.uk](http://www.thehigginsbedford.org.uk) For more information.

Pat Olney Tel. 01234 824384

email [pat.olney@btopenworld.com](mailto:pat.olney@btopenworld.com)

**FIT for LIFE**

**PILATES**

**Beginners/Improvers**

**Oakley Village Hall**

**Mondays 11.30 – 12.30**

**With Nola**

**Certified Stott Pilates Instructor,**

**P.E.A., R.S.A.**

**£4.50 per class**

**For more information on**

**Classes / Private Tuition**

**call Nola on 07793 056122**

**FIRST CLASS FREE!**



## Rev Catherine Wilson - Our new vicar

After more than a year without a vicar, the Benefice of Oakley, Bromham and Stagsden is to have a new vicar, the Reverend Catherine Wilson. She and her family will be moving to Bromham from Kent where she has been Curate for the past four years. She will be officially installed by the Bishop of St Albans at a service at St Mary's at 7.30pm on Monday 22 October. Naturally all are invited to attend so put the date in your diary now and come along to welcome Catherine.



Catherine grew up in Surbiton and read English at Southampton University. After graduation she studied for her PGCE and taught in primary schools for five years. It was during this time that she met her husband Tim who was training for ordination. They lived near Bridgnorth in Shropshire and then moved to Kent, first to Margate and then to Great Chart near Ashford as Tim moved from parish to parish. They have four children; two are married and live in Ashford and London respectively. A third is working in Australia and the youngest is still at university. After many years as a vicar's wife and stay-at-home Mum, Catherine began to feel a call to the ministry when their youngest child was at secondary school. She trained at SEITE (now St Augustine's Theological College) on a flexible programme, studying at evening classes and residential weekends. Catherine was ordained in Canterbury Cathedral in June 2014 and as a priest in 2015.

Like many newcomers, Catherine and Tim's knowledge of Bedfordshire is limited and they look forward to getting to know the area and the people of Oakley, Bromham and Stagsden. Catherine's interests include cooking, visiting historic houses, growing vegetables and occasional bell-ringing.

Michael Frampton

## Oakley Show

Hunt amongst your in-tray and find your entry form for The Oakley Show. Time is passing and Sunday September 16th will be soon here.

We are aware that the fruit and vegetable entries could be a bit below par due to this year's peculiar weather, but it is the same for everyone so still go ahead with your examples.

There have been several enquiries to clarify some small issues and it seems that we can expect quite a few lemon drizzle cakes. We look forward to the photographic entries depicting "Nature's Bounty", a topic which allows your imagination to run riot in its interpretation.

Even if you do not put any entries into the show, come and see what others have produced, stay for the auction of goods and along the way treat yourself to a slice of homemade cake and a cup of tea served up by members of the village hall committee. There is also a raffle with very good prizes.

All proceeds will be going to the village hall, the central heating system needs to be upgraded at a cost of several thousand pounds.

We look forward to seeing you.

If you have any queries contact:

Jean Weston [j.weston370@btinternet.com](mailto:j.weston370@btinternet.com) tel: 823910

Wendy Gater [wendygater21@btinternet.com](mailto:wendygater21@btinternet.com) tel: 824633

Yvonne Keyte [us2aticrascals@hotmail.com](mailto:us2aticrascals@hotmail.com) tel: 825166

Sandra Frampton [sandra\\_frampton@btinternet.com](mailto:sandra_frampton@btinternet.com)

Julia Nicholas [the1juliamn@aol.com](mailto:the1juliamn@aol.com)

Donna Peckham [Donna.peckham@aol.com](mailto:Donna.peckham@aol.com)



Jean Weston



# Brownies

OAKLEY

## Our last term as Brownie Leaders

We decided that our last term as Leaders should have the title of "FUN". We started by asking the girls to design a badge. Alice our Young Leader chose two winners Olivia and Jessica who then put their heads together to come up with a badge which we had made and gave to all the girls at the end of term.

Brownies love to make and eat food so this came into the term quite a lot. We had fun when "Chemical Chris" came to two meetings and showed us how to make smoke rings and huge bubbles. We also fired rockets made from lemonade bottles which caused great excitement when one landed on the school roof. We made sherbet and, one of the favourite things, made "slime".

Our last night came around too quickly. On a lovely evening we had a Bouncy Assault Course outside and Diddy cars and crafts inside. My favorite Ice Cream man Tony came at the end to finish the evening on a high.

It was lovely to see so many parents and friends at our last meeting. Thank you so much for all the lovely gifts. We will enjoy our afternoon tea at Woburn Abbey.

On a more personal note Julia (Ramsey) made a wonderful cake with "Owls" on, which was delicious. Julia, along with Helen, was at my first ever Brownie meeting and it was lovely to have them and Lily and Olivia (their daughters) at my last.

Brenda, Brown Owl.



For all Pre-School Children

At St Mary's Church Oakley on

Thursdays during School Term 10am to 11.45

Crafts, Painting, Play, Music, Stories and a Healthy Snack plus tea/coffee for the adults

More detail from Dorothy Palmer at  
01234 823959



## WHITE'S Lawnmowers & Garden Machinery

Sales ~ Service ~ Parts ~ Hire  
Briggs & Stratton Service Centre

**STIHL** **STIGA** **AL-KO**



**LAWNFLITE** **MTD** **Indespension**  
...& many more

LARGE SELECTION FOR ALL YOUR GARDENING NEEDS

**01234 826066**

**info@whites-online.co.uk**

www.whites-online.co.uk  
College Farm, Oakley, Bedford, Bedfordshire, MK43 7RX



## From Snacks to Meals!

Cakes to die for  
Best coffee in the neighbourhood  
Milkshakes, tea, soft drinks  
Open SEVEN Days!  
Friendly staff, good service



# for Coffee

## Oakley's Coffee Shop!

Phone 824113- [info@o-for-coffee.co.uk](mailto:info@o-for-coffee.co.uk)  
<http://www.o-for-coffee.co.uk>  
Oakley Park (Unit 1), Station Road, Oakley!



# Tudor Rose Patchwork

## Oakley's Sewing and Threadcraft Shop

Phone 824983 - [info@tudorrosepatchwork.co.uk](mailto:info@tudorrosepatchwork.co.uk)  
<http://www.tudorrosepatchwork.co.uk>  
Oakley Park (Unit 1), Station Road, Oakley!

We're friendly and very helpful!  
We run all kinds of workshops and clubs!  
We have a great selection of knitting yarns  
We have a huge range of cotton fabrics  
as well as other types of fabric

## SHARNBROOK GOLF CLUB

9 HOLE PAR 68 PARKLAND COURSE  
[sharnbrookgolfclub.co.uk](http://sharnbrookgolfclub.co.uk)

CALL FOR DETAILS  
01933 665 495

PRIVATE CLUB FOR MEMBERS AND GUESTS ONLY

# JOIN TODAY



A CHALLENGING 9 HOLE GOLF  
COURSE OFFERING A STRESS  
FREE ENVIRONMENT TO LEARN  
GOLF, IMPROVE YOUR GAME OR  
JUST ENJOY A FEW HOURS  
WITH FRIENDS

### Annual Fees:

Full Ladies ..... £210  
Full Mens ..... £420  
Members guest green fees ..... £10  
Reductions for young members

[membership@sharnbrookgolfclub.co.uk](mailto:membership@sharnbrookgolfclub.co.uk)

# Oakley Rural Day Centre

Oakley Rural, The Old School, Lovell Road, Oakley, Beds, MK43 7RX

Tel: 01234 824935 Mobile: 07733 227374

## PLACES AVAILABLE

Our Day Centre provides our older people a place where they can make friends in a warm and comfortable atmosphere. A range of activities including crafts, entertainment, quizzes and good old conversation are at the heart of our day. We serve freshly prepared home cooked lunches together with tea, coffee and toast at the start of the day with beverages throughout. The Centre is open Tuesday, Wednesday and Thursday. For details of costs and advice, contact Lynne on **01234 824935** or **07733 227374**



## 20<sup>TH</sup> ANNIVERSARY CELEBRATIONS

On Thursday 28th June we celebrated our 20th anniversary here at the centre!

Clients, Staff, volunteers and trustees have been preparing for the day over the last couple of months. Our clients have been busy making the wonderful anniversary banner that was placed on display on the day plus making paper chains to decorate the room.

We looked out photographs from the past and placed on a display board together with a selection of items our clients make while at the centre. We also had a slide show showing more photographs in the back room together with a buffet we prepared for our guests together with a lovely cake celebrating our anniversary! We had so many guests who attended throughout the day including volunteers and clients who attend on previous days and staff and volunteers who have worked at the centre over the years!

We were also delighted to meet the official speaker of Bedford Borough Council, Doug McMurdo. Also attending were representatives of the older people's team from Bedford Borough Council, Door to Door, Bedford Guild House, Age UK, and the Tibbs Foundation!



During the day staff were presented with thank you gifts for their efforts. Lynne Godfrey who has worked at the centre since day one was given a lovely bunch of flowers. The staff also presented the founder member and trustee Pat Olney with a special celebration rose! The day was a wonderful success and I would like to thank Angela, Brenda and Mary who worked tirelessly in the kitchen all day. I would also like to thank all our volunteers who give their own time on a regular basis to help make our day centre such a wonderful place to be! There are more photographs in the news section of our website which can be found at

[www.oakleyrural.org.uk](http://www.oakleyrural.org.uk)



## EVENTS

Over the last few months we have had visits from Sharnbrook singing for pleasure, Urban Safari who showed an arrangement of animals and birds to our clients. Also Catherine Elworthy from Elworthy Flowers visited to carry out a demonstration of arrangements. Later in August Kempston Hammers Choir will visit the centre to entertain us all with their fantastic singing!



# Oakley Pre-school News



I hope you can see from the photographs that the 50th Celebration went very well. We raised almost £500 towards our new building, thank you to everyone who came to support us.

## Admissions

If you would like to register your child for a place at pre-school, please contact us on 01234 826452 or by email: [info@oakleypreschool.com](mailto:info@oakleypreschool.com)

Our website is updated regularly; please do visit it for an insight into Oakley Pre-school.

[www.oakleypreschool.com](http://www.oakleypreschool.com)

For information on funding you can contact the Family Information Service 0800 023 2057

Sally Martiello



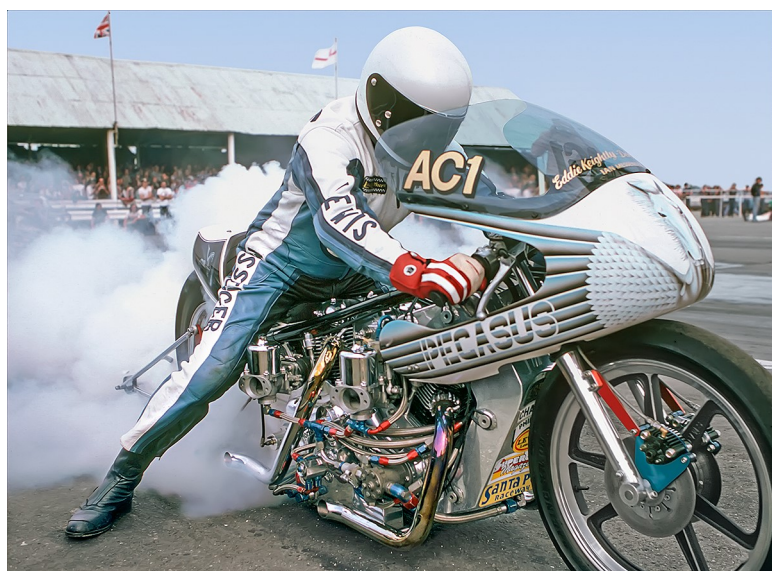


## Oakley Resident Honoured

It has just been announced that Oakley resident Ian Messenger, former motorcycle Drag Racer, will be honoured by being inducted into the **British Drag Racing Hall of Fame** alongside fellow "**Team Pegasus**" members Derek Chinn and Mick Butler from Bedford at a lavish ceremony in London later in the year.

"**Team Pegasus**" competed throughout Europe from 1968 to the early 1980's. They built & raced a succession of "Top Fuel" motorcycles under the name of **Pegasus**. The team initially used the infamous V-twin Vincent engine and then from 1974, without Mike Butler, a machine using two supercharged Norton engines.

During this period they established themselves as a front-running team, winning the British Championship three times and being the first English riders to compete at the famed US Nationals in Indianapolis,



USA during the National Hot Rod Association championships.

Last of the **Pegasus** machines, the twin-engine supercharged Norton, now resides at the National Motorcycle Museum, Birmingham after achieving 8.39s at 170 mph for the standing quarter mile in 1978.

The **British Drag Racing Hall of Fame** was established in 2006 to recognise significant contributions or achievements in the sport of British Drag Racing, further details can be found on their website <https://www.britishdragracinghof.co.uk/>

Comprehensive details of **Team Pegasus** can be found on the team website:

<http://www.pegasusteam.co.uk/>







## Joshua receives UK Aid Direct grant to help children in Chilaweni

We are delighted to announce that we have been awarded a 3 year grant from the UK Department for International Development through the UK Aid Direct funding scheme. We've been working on finalising this for well over a year but have had to keep the news under wraps until now. This project will run from 2018 to 2021 and is a fantastic opportunity for us to make a difference to children living in the Chilaweni area. The grant will support our work with 5 community-based childcare centres (CBCC) in Chilaweni, Daniel, Kaliati, Masu and Ching'ombe improving education, health and nutrition for the children aged 2-6 years old. There have already been some exciting activities taking place including training for the caregivers, Parent-Teacher-Association meetings and hygiene training - the photo shows one of the groups following training. This is an opportunity that will benefit all our CBCC as we also have funding to carry out research into the impact of our work which will help us improve what we're doing in all our centres. We look forward to keeping you all updated about the progress of this project.

Jacky Mould



- Complete upholstery service
- Spring & cushion replacement
- Thousands of fabrics to choose from
- Free estimating, collection and delivery
- Domestic and commercial work

Call Martyn on 07989 774192

or email: [info@oakleyupholstery.co.uk](mailto:info@oakleyupholstery.co.uk)

Unit 2 Oakley Park, Station Road, Oakley

[www.oakleyupholstery.co.uk](http://www.oakleyupholstery.co.uk)

Show this  
advert for  
20% OFF  
all fabrics in  
September



## Oakley Upholstery & Interiors





Hello Everyone.

Remember us? We appeared in the summer edition of the Oakley Newsletter, after having just won a Gold Medal at the Chelsea Flower Show. Well it was not just us. We and ninety-three other flower growers in the UK grew flowers to be within a display at The Chelsea Flower Show – but its success has been amazing for our business.

Some of you may be thinking, who and where is this business? Well, believe it or not, we are in Oakley, tucked away behind Queens Close and the High Street. We are only open by appointment for Pick Your Own Experiences and sell our flowers to local florists, but when we have surplus flowers, we do put them at Oakley shop.

This is our second year in business. Compared to last year what we grow and how much we grow



has changed vastly. Last year we only supplied five local florists. Now we supply twenty florists, who reserve flowers months ahead to make sure the floral wishes of Brides-To-Be are fulfilled.

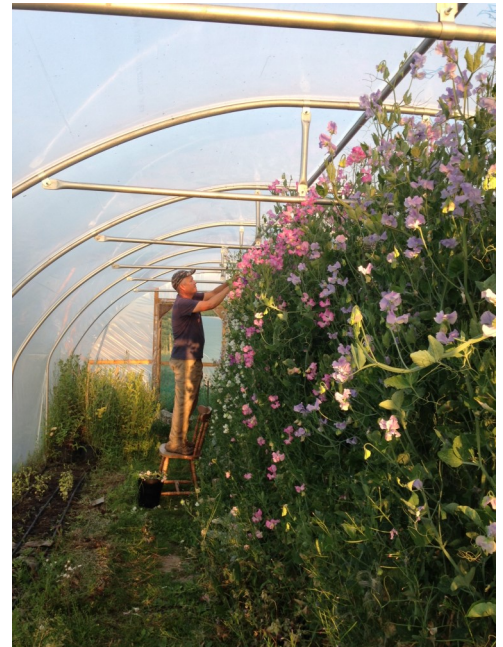
In May of this year, we built a cabin to co-host workshops with local

independent businesses. The cabin was not on our plans until 2019, but workshops seem to be very popular these days, and a workshop on a flower farm is pretty unique. Thankfully, one of us (Julian) is a risk-taker, and the risk paid off. We have already co-hosted ten workshops this year and have many more (not just floral ones) planned.

But it has not been easy. No-one could have predicted that we would have such an amazingly hot summer and keeping our sweet peas happy in our polytunnel was a mammoth task. We coped and thankfully our flowers did too. Perennials including big bold 'Café Au Late' dahlias, grasses including our favourite *Panicum* and, native to South America, Zinnia loved the heat. Our beautiful David Austin Roses did not like the heat but with a bit of extra attention we never had to turn down an order. Annuals including brilliantly blue Cornflowers, pincushion Scabious and jewel-coloured Snapdragons were much loved by the local polli-

nators too.

Another idea (conjured up by the risk taker) was running a Pick Your Own Experience which is still running until mid-October. Again this idea paid off, especially as a birthday treat. I expanded my skill set from



flower grower to florist (whilst still holding down a part-time job at Unilever) to regularly create hand-tied bouquets and Merri Jam Jars for local delivery or collection from the farm.



Alas, summer is drawing to a close and autumn is getting ready to move in. You might think that this means we get a break, but you would be wrong. There is no rest for us as we transform from Merri Flowers into Merri Christmas Trees and begin the process all over again. This time it is all about supplying florists from near and far (one of our florists has a shop into trendy Shoreditch) with freshly cut trees branches for their Wreath Making and for Table Arrangement Workshops. Please see and keep our advert in this issue for £5 off any Christmas tree.

Anyway, that's enough time spent writing this article. It's time for bed clearing and back to seed sowing in anticipation of next year.

Rachelle & Julian Merrill, Merri Flowers, Oakley (07946 519737; [www.merriflowers.co.uk](http://www.merriflowers.co.uk)).



# MERRI FLOWERS

OAKLEY MK43 7TB

## **Pick Your Own Experience**

Allow Julian or Rachelle to take you on a walking tour of our flower farm.

Fill a bucket with flowers for £20.

(By Appointment Only)

## **Tag Your Own Christmas Tree Experience**

Visit our farm in late November and December.

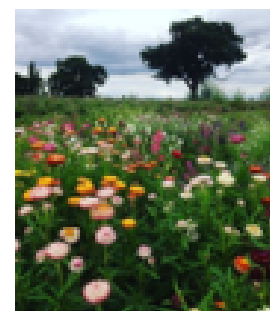
Walk through our Christmas Tree Fields and Tag your Christmas Tree.

Let Julian cut it down for you to take home or tag it for delivery.

From £25

(By Appointment Only)

Potted trees also available



EVENTS   WEDDINGS   WORKSHOPS   BOUQUETS

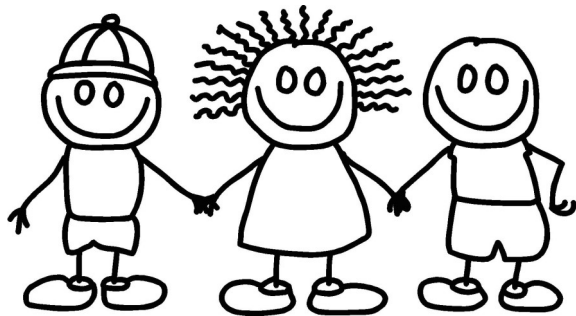
**For more information**

[info.merriflowers.co.uk](mailto:info.merriflowers.co.uk)   Call Julian on 07946 519737   [www.merriflowers.co.uk](http://www.merriflowers.co.uk)

### **Keep this Advert**

Get £5 off our Pick Your Own or Tag Your Own Christmas Tree Experiences

QUOTE: Oakley Grown



## Oakley Toddlers

Monday 9.30-11.00am  
term time only in the Village Hall

£1.50 crafts/toys/singing/drinks & snacks

Oakley Toddlers has been running successfully over the last two decades, providing a warm friendly place for mums, dads, grandparents and carers to meet and play with their children.

Anyone interested in volunteering to help run the group please drop in to meet us and see what is involved!

Contact Sue Carey 07971 202405

## NAO Cattery

**BOOK NOW!**



**07411 136691**

naoservices111@gmail.com

www.naoservices111.weebly.com

Bramble Lodge, 29 Oakley Road, Clapham, Bedford MK41 6AN

Opening Hours: 9.00-11.00 Mon-Sat & 18.00-19.00hrs Mon-Fri  
Sunday and Bank Holidays Closed

\* Note that all boarding cats must be healthy on arrival and fully inoculated against cat flu and contagious enteritis. Terms and Conditions apply, charge includes insurance and vet on call.

## NAO Cleaning

- Regular cleaning (Weekly, Fortnightly, Monthly etc)
- Home Care Cleans
- Spring cleans
- Moving In & out clean
- Builders before and after clean
- Tenancy beginning & end clean

FOR A **FREE** ESTIMATE CALL TODAY ON  
**07411 136691**

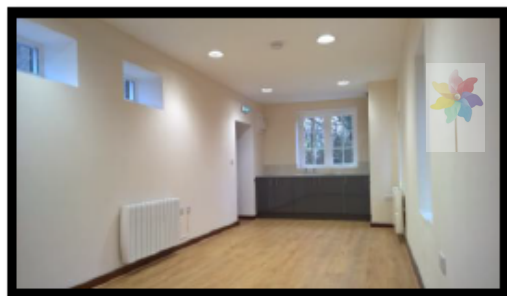
Bramble Lodge, 29 Oakley Rd, Clapham, Bedfordshire MK41 6AN  
www.naoservices111.weebly.com  
naoservices111@gmail.com

**We cover all of Bedfordshire**

## HIRE THE OLD SCHOOL

Lovell Road, MK43 7RX  
Reg. Charity No. 1119074

For your Club, Society, Music Practice, Children's  
Party or Meeting  
Regular times available for the Meeting Room and  
Hall (hireable separately)



### NEW MEETING ROOM AVAILABLE

Please contact :

Bill Sellars 07980 745292

Email: [billsellars@theoldschooloakley.org.uk](mailto:billsellars@theoldschooloakley.org.uk)

Web : [www.theoldschooloakley.org.uk](http://www.theoldschooloakley.org.uk)

## RP TESTA

PLUMBING & HEATING SERVICES LIMITED

A professional service with over 25 years experience :

All general plumbing requirements  
and full design & installation for:

- ◆ CENTRAL HEATING inc. LPG
- ◆ BATHROOMS inc. tiling etc.
- ◆ UNDERFLOOR HEATING
- ◆ UNVENTED HOT WATER



FOR A LOCAL AND RELIABLE SERVICE CALL

**T: 01234 781827**

[www.testaplumbingandheating.co.uk](http://www.testaplumbingandheating.co.uk)



## **Oakley Neighbourhood Plan - Pat Olney Chairwoman NDP Group**

### **Final Consultation on the Draft Neighbourhood Plan**

**19 September to 31 October 2018**

The final draft will be on the website, [oakleyvillage.co.uk/ndp](http://oakleyvillage.co.uk/ndp) from 19th September. There will also be copies for viewing in the Post Office, St Mary's Church and the Methodist Church. If you wish to have a paper copy then please contact the Parish Clerk, Ann Paice, [parishclerk@oakleyvillage.co.uk](mailto:parishclerk@oakleyvillage.co.uk) or tel: 07873 887370.

We need all your comments. The Feedback Form in this magazine can be completed and dropped into the Post Office. The form will also be available on the village website and can be emailed back to the clerk at [parishclerk@oakleyvillage.co.uk](mailto:parishclerk@oakleyvillage.co.uk).

**It is important we have a statutory Neighbourhood Plan. This will ensure that the village can control development locally and according to your wishes, and that it is not up to housing developers, the Borough and the Government. How did we get to the final draft?**

### **Housing Allocation**

The government's planning policy states that all plans have to allocate areas for housing growth. The Bedford Borough Local Plan allocated the majority of new dwellings to the urban areas. They then divided villages into categories of 1, 2, 3 and 4. Bromham, Clapham and Sharnbrook are category 1 villages and are allocated 500 dwellings each. Category 2 villages are allocated up to 50 houses. Categories 3 and 4 are allocated fewer houses, to be determined in their Neighbourhood Plans.

Oakley is a category 2 village and therefore needs to provide up to 50 extra dwellings.

Oakley Parish Council appointed Bedfordshire Rural Communities Charity to conduct a housing survey in the village. They analysed the results and it shows that the village's both rented and private housing need was for approximately between 38 and 40 dwellings. Our own village consultation suggested between 20 to 50 dwellings was the preference.

### **Policies**

The Government Planning Policy Framework states that we must base our plan on a Sustainability Framework that shows where housing and business can be located, whilst protecting sensitive landscape and the village character and historic heritage.

The policies covered in our Neighbourhood Plan are:

Housing: Growth and Mix in Oakley.

Business and Employment: Business; Retail and Community Facilities; Public House; and Broad-band Connectivity.

Landscape: Sensitive Landscapes; Local Green Spaces; Coalescence with Neighbouring Villages.

Design and Heritage: Design; Local Character; and Local Heritage.

Transport: Balanced Transport Provision

### **Village Consultations**

In addition, there have been 3 consultations with village residents to gather information on how they wished to see the village by 2035.

There are many background papers including the consultant's report on possible development sites. All these documents are on the website. Using all this information, plus village concerns of the traffic on the narrow roads, parking problems, surface water drainage, two sites for housing growth in Oakley are allocated - one in the High Street and one in Station Road.

**In the latest Government Planning Policy Framework, the government have strengthened the role that Neighbourhood Plans have in planning decisions. The Local Planning Authority and the Inspectorate now need to give considerable weight to the Neighbourhood Plan Policies when making decisions and they can be challenged on those decisions.**

**Please fill in those Feedback Forms and either put them in the Post Office or download them from the website and email them to Ann Paice at [parishclerk@oakleyvillage.co.uk](mailto:parishclerk@oakleyvillage.co.uk).**

Finally, can I thank the NDP committee members and the Parish Council for all their hard work over three years to get the plan to this stage. Also, to yourselves who have discussed and commented on how you wish the village to continue to keep its vibrant community character within the beautiful landscape of the river Great Ouse.

Pat Olney

## **FUN (because everyone likes to have fun...)**

There are many components of achieving a degree of physical fitness. Two of the big players are time and adherence. One of the most important considerations when thinking about what type of exercise to participate in is "what will be the most fun or enjoyable"; after all, in order to see improvement or progression you are going to be doing it for a while and you are going to have to stick to it. This really is not said enough; there is so much activity to choose from but with all of life's stresses, barriers and time limitations, sticking to an exercise regime that you find a chore or something to 'squeeze in' is probably not going to last six months, let alone become a part of your routine.

Exercise should be something to look forward to, something enjoyable, something with an incredible by-product...better health and quality of life.

Adherence; noun; the quality or process of sticking fast to an object...or objective. Note: as far as exercise and goal setting is concerned this is NOT about deprivation or missing out on things but creating a positive environment by making small meaningful changes that allow you to stick to your goal.

There are a number of ways to try and create adherence to any plan. One of the most effective is goal-setting.

George T. Doran famously researched and discussed objective-setting in management (stay with me here!), something that is equally applicable when considering your targets for your own health and/or fitness. In a nutshell, the best types of goals are 'SMART'. They are detailed (specific); include numbers or frequency i.e. something to track to show you are getting closer (measurable); something that is challenging but possible with a little hard work (achievable); be honest with yourself, know your limitations and consider barriers or hurdles (realistic) and give yourself a deadline (timed).

For example, a dietary goal could be: by Christmas Day, consistently leave at least five chocolate biscuits in the packet upon opening and don't eat them all in one sitting!

This is specific as I am referring to chocolate biscuits only, I have included numbers i.e. five must be left, it is measurable using the figures, definitely challenging but achievable, but five should be pretty realistic...even on a bad day...and my deadline is by Christmas Day.

Whilst that example may be more or less theoretical for some of us (!), adherence to a successful health and fitness lifestyle should not be about denial. There are days when some of those biscuits are entirely necessary, life-saving or rewarding. A consistent and enjoyable exercise programme also might just make them less-impactive on your general health and allow a trip to the biscuit tin a little more often and a little less guilt-ridden. To help with this there are a number of approaches that you could take without even leaving the village:

- Improve your NEAT-ness...not how tidy you are (!), but your Non-Exercise Activity Thermogenesis. This is basically increasing anything in your daily routine that helps burn calories over and above eating, sleeping and specific exercise. Walk as opposed to driving to the Post Office; do some stretching or yoga in front of Corrie as opposed to watching from the armchair (or get up and move around in the ad-breaks!); simply anything that adds to your movement for the day;
- 'Oakley Casual Joggers' is a Facebook group for anyone looking to go out for relaxing runs, endurance runs, fun runs or just getting out and active. This is intended as a running resource to provide a platform for like-minded people to arrange meeting up to go out running. The more the merrier, all abilities welcome. They say 'if you want to go fast, go alone - if you want to go far, go together';
- HIIT exercise sessions in the Village Hall are running on three Tuesdays a month from 7-8pm, beginning on Tuesday 18th September, cost £5 per session. Please wear trainers and appropriate clothing and bring a towel, water and mat;

I am a YMCA Level 3 qualified personal trainer, for further information on sessions and to book your free client consultation and induction please contact me on 07808839718 or find me on Facebook under Lucy Herceg PT.



## **Oakley Village Directory 2019**

Shortly it will be time to start work on the Village directory for 2019. I wonder if you are interested in joining our team to help produce the directory.

The directory promotes clubs, businesses and community activities in Oakley and in doing so it gives a really comprehensive overview of the lovely village we all live in.

We are fortunate that the directory has been sponsored every year of its publication (12 years) by Old Road Securities. Their generous sponsorship means that all funds raised (£13,380 so far) are spent on village projects - the sculptures in Linch Furlong, a contribution to Oakley Orchard, a contribution to the Christmas lights and the new village signs at the entrances to Oakley. As a village we should be really proud of ourselves.

To help produce the directory I am looking for someone to join our team and to spend a small amount of time over October and November checking the entries in the directory - have contact names and numbers changed? It is not a big job and yet it results in the great little booklet that we all receive. If you are volunteering for the Duke of Edinburgh scheme then it is a great way to do some voluntary work.

I would really love to hear from you if you can help.

Please contact Sara Fardon on 0771 365 1246 or email me at [sarafardon@yahoo.co.uk](mailto:sarafardon@yahoo.co.uk)

## **Oakley Village Directory 2018**



**Your guide to the local community**

**Sponsored by  
OLD ROAD SECURITIES PLC**

**An Oakley Parish Council Publication**

[www.oakleyvillage.co.uk](http://www.oakleyvillage.co.uk)



## **Treasurer needed for Oakley Youth Club.** 🎃

**Could you support the Youth Club by being the Treasurer?**

**Main responsibilities are:**

- 1) Managing Cash flow**
- 2) Cheque Signatory**
- 3) Submission of figures each year to request grant**

**We'd really welcome your involvement in supporting the club.**

**For more information contact Sara Fardon, Secretary on**

**Tel:- 0771 365 1246, or email:- [sarafardon@yahoo.co.uk](mailto:sarafardon@yahoo.co.uk)**

**Thank you!**

## The Phantom Sprayer

After a break of two or three months due to unforeseen circumstances I am back on the spray trail.

There are in fact only a minimum number of people who refuse to be responsible dog owners and clean up after their dog, but those people are regular daily offenders, as looking around they have the favourite places to take their dogs and it just piles up. The majority of dog walkers not only clear up but are disgusted by those who do not.

I provide my own spray paint, it is not funded by the local or national taxpayer and recently I have used a whole can within a few days. I can easily use a whole can in the Station Road field on one trip – this is where children often run in term time.

Once again I appeal to all dog owners, please clean up after your dog, whether walking the parks, streets, the public footpaths, or just around the fields. Please remember there are others using the same places to walk as you, they do clear up and find it very unpleasant to find other dog's mess littered around. The farmers also do not want their fields contaminated.

Don't forget to worm your pets regularly, as worms can cause serious problems if people are contaminated, your vet will advise about worming and anti-flea/ lice regime. There are ticks about now that can cause illnesses capable of killing your dog and some of these are also zoonotic, so can cause illness in humans, but there are treatments for your dog to prevent this occurring.



## Oakley Educational Foundation

This Foundation exists to assist young people between the ages of 16 and 25, who live in the Parish, with grants towards the cost of books and tools, etc. in furtherance of their education.

Applications are accepted in the months of May and November and must be accompanied by receipts of purchase. Application forms can be obtained from the Clerk, Louise Tunley.

For further information, or for an application form, please contact Louise Tunley on 07917 462213, by post at 19 Goldington Road, Bedford, MK40 3JY or by email at [louise\\_tunley@yahoo.co.uk](mailto:louise_tunley@yahoo.co.uk).

## Oakley Youth Club

**Youth Club, Fridays**

**7.30 – 9.00pm (Term Time only)**

**At the Old School, Lovell Road, Oakley**

**£1 Entry.**

**Email: [dawn.pither@btinternet.com](mailto:dawn.pither@btinternet.com)**





## Who says the summer holidays are boring?

The summer holidays do not have to be full of long boring days with nothing to do!

Four Scouts from Oakley were happy and exhausted when they returned from a week at Nor-



Jam. NorJam is an international Scout jamboree that takes place at Norfolk Showground every four years and it is a truly international event. This year Scout groups from Germany, Norway, Egypt, Ghana, Alberta and Thailand struck up friendships with Scouts and Explorer Scouts from all over the UK.

Our four intrepid Scouts joined up with members



### Steve's Snippet – No. 32

(For those who told me that they missed my Snippet contribution in the last Newsletter, I think I invented this one and I apologise in advance).

The young Duke was handsome, educated, wealthy, but incredibly shy.

He was the epitome of the eligible bachelor but his painful shyness meant that, whilst he could laugh and make merry with his male companions, he could barely talk to the many young ladies who would hope to attract his attention.

He noticed the young ladies however, and would write to those he particularly admired in the hope that they would accept his invitation to meet and perhaps develop a relationship that might ultimately lead to the marriage his parents and other so fervently wished for him.

As well as being so painfully shy, he had another disadvantage – his handwriting was so incredibly bad that his various letters were indecipherable.

As no lady, or anyone else for that matter, could read a word he wrote, he remained...an illegible bachelor.

Steve Nicholas

of the 101<sup>st</sup> Scout Group in Kempston and Bedford Explorer Scouts, and they were in the 1970s themed sub-camp, so flared trousers were a must!



There were lots of things to do, from discos and live music, to zorbing, go-carting, trampolining, circus skills, water activities, and many more. There was no time to be bored.

Our contingent also found themselves starring on ITV Anglia News when the weather presenter, Chris Page, visited them as they were preparing their evening meal – of salad!!

In other news, we held our AGM and end of term BBQ in July and were sorry to say goodbye to several of our adult members. Group Chairman, Steve, stepped down after 2 years in the post, plus helping as a parent before that; Group Scout Leader, Jon, stepped down after almost 10 years of involvement with Oakley Scout Group; Cub Leader & Assistant Scout Leader, Arran, and Section Assistants, Tom and David, have moved on to other things after a number of years with the Group. We thank them all for the hard work they have put in to making Scouting in Oakley fun for our members.

While we said goodbye to some faces, we also welcomed some new adult members to the Group, with Lynn taking over as Chairman, and Jody joining us as a parent member of the Executive.

We are on the look-out for more Section Assistants and a new Group Scout Leader.

**Beavers** (for 6 to 8-year olds) runs on Wednesdays 18:15-19:30 (contact Chris on 07805 175521);

**Cubs** (for 8 to 10.5-year olds) runs on Thursdays 18:30-20:00 (contact Matt on 07552 217267);

**Scouts** (for 10.5 to 14-year olds) runs on Tuesdays 19:00-21:00 (contact Dean 07854 312255 or Karen on 07918 181815);

**Explorers** (for 14 to 18-year olds) runs on Wednesdays 19:45-21:45 (contact Michelle on 07760 315417).

## Linch Furlong – A Success Story and Vision of a Countryman



A guided tour of Linch Furlong had been organised for the evening of the 10<sup>th</sup> of July and it was an ideal evening for showing-off the successful progress of Pat Knight's management plan for the field: the dipping sun shone a mellow gold and the air was balmy and alive with insects of many kinds, except, fortunately, the kind that like to dine on passers-by.

Pat is an Oakley man, born & bred and he has a great love for the outdoors. This has led to him having quite a depth of knowledge of nature, its flora and fauna. This knowledge has grown from an earlier time when, as a young pupil of Oakley's Old School, and when the population of the village was only a few hundreds, classes would regularly venture out into the wilds to be instructed in the ways of the countryside by a keen and knowledgeable teacher. There was so much about this type of education that was good for society and individuals but is not recognised or encouraged nowadays.

The woods, fields and river were a well-used playground for children of those times. Life was simpler and uncluttered by the trappings of technology and our modern age. Pat recalls how the severe and prolonged winter of 1963 saw the river freeze to the extent that one could walk on the ice from Stafford Bridge to Oakley Bridges. On the way, his group of friends watched as pigeons fell from the trees in their dozens, freezing to death after gorging on frozen brussels-sprout tops in the fields, the tops of the plants being all that was accessible in the deep snow.



This was a warm evening though and the sunlight shone through stands of false oat grass and accentuated the clouds of midges that kept themselves busy in the soon-to-fade light by the trees and away from our enthralled group. Pat explained that his plan for the field was to tend it in the most natural way possible, without the use of sprays to suppress the undesirables, such as the previously-rampant bramble, which will take over and cover a field if left unchecked. No, his method was to mow regularly where the various walks were to be encouraged and to allow other areas to develop with only the occasional cutting on a rotation basis.

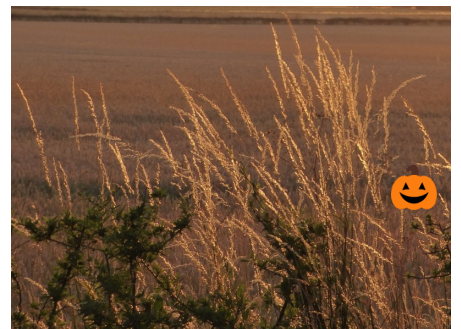


Another trick is to gather seed from the various plants he knows will enhance the plan and then re-sow this seed in other areas where the desirable plants should be encouraged. The success of the combination of management strategies has led to Linch Furlong being bramble-free on its now lawn-like walkways and rich in a diversity of wild flowers and other plants in the protected areas. The "right" plants then lead to a rich population of many insects and butterflies – how nature should be, with a little of the help it needs in our less-than-sympathetic

world.

Pat explained that he has been fortunate in a past career of land and environmental management, sometimes on a grander scale than our valued green spaces. After a more advanced education in a choir school in Oxford, Pat had returned to Oakley with a desire to farm and work on the land. Realising that owning and working his own farm was not going to be possible he had trained and studied the craft he now uses so successfully.

He has been fortunate in that he has planned, managed or been involved in many larger projects, such as Hinchingsbrooke Country Park and Bedford's own Priory Park. With the rich educational centre of Cambridge nearby there was also ready access to eminent specialists in various subjects to do with environment, conservation and the natural world. Pat says that he was fortunate to be able to learn a lot from such contacts



In a change of direction, Pat has also worked for some years in social services, ultimately managing a team of workers. Having now retired from that he has returned to his first, great passion, farming a flock of some 60 sheep and contract-managing various local green spaces. A man of many commitments, he still works part-time with groups of autistic young adults.

I think a few of us who were present that idyllic evening in Linch Furlong were surprised and delighted that Pat had been our educated and entertaining host for the evening and had explained so much. He had shown us how an idea had been shaped by the land, by working with it, not fighting it.

To Pat Knight, our sincere thanks, both for that evening and for so diligently and ably protecting such a rare asset as our Linch Furlong.

Steve Nicholas





Welcome to the multi award-winning  
**Sharnbrook Mill Theatre**  
 Patrons: Joanna David & Hugh Laurie CBE : Registered Charity

Monday 17<sup>th</sup> – Saturday 22nd September 2018

Book Now!

## The Crucible

By Arthur Miller

Set in small town Salem, Massachusetts in 1692, this exciting drama about the Puritan purge of witchcraft is both a gripping historical play – and a timely parable of our contemporary society.

The story tells how small lies - children's lies – build and build, until the suspicions of a whole town are aroused.

**TICKETS:** (£1 booking fee) **ADULTS:** £10/11,  
**NB: STUDENTS IN FULL TIME EDUCATION:** £7 (TUESDAY & WEDNESDAY ONLY\*)  
**NB:** The Crucible is part of the Curriculum 2019

\*Change of concession days from announcement in the Oakley Summer Newsletter

An amateur production by arrangement with Josef Weinberger Ltd



Monday 5<sup>th</sup> – Saturday 10<sup>th</sup> November 2018

## Avenue Q – The Musical

Avenue Q is an "autobiographical and biographical" coming-of-age parable, addressing and satirizing the issues and anxieties associated with entering adulthood.

Its characters lament that as children, they were assured by their parents, and by children's television programmes such as PBS's Sesame Street, that they were "special" and "could do anything". But, as adults, they have discovered to their surprise and dismay that in the real world their options are limited, and they are no more "special" than anyone else.

The musical is notable for the use of puppets, animated by unconcealed puppeteers, alongside human actors.

*Parental guidance is suggested for children under 15 due to adult language and situations*

*Tickets £12/13 will be available after 'The Crucible'.*



**TICKETS (£1 booking fee) for all our shows may be booked in person at PICK-A-LILY, Florist, 61 High St/Park Lane, SHARNBROOK, or on line: [www.sharnbrookmilltheatre.co.uk/tickets](http://www.sharnbrookmilltheatre.co.uk/tickets) Groups (10+) 10 % discount (not Fri/Sat) 2 wheelchair spaces (please phone (01234) 781372 to book); easier access seating; hearing loop**



Wednesday 12<sup>th</sup> September, 12 for 12.30 pm

The next in our series of popular 'Lunches at The Mill'

**FLORAL DEMONSTRATIONS BY JO JACQUES**  
 of Pick-a-Lily, Florists of Sharnbrook  
**PRECEDED BY A 2 - COURSE LUNCH**  
 Wine/soft drinks available Raffle  
**Ticket £16**



Friday 12<sup>th</sup> October at 7.30 pm

Do join us for a Special Evening with  
**LINCOLN NOËL - THE MAESTRO**  
 Joyous, most entertaining  
 Concert Pianist, with  
 a vast repertoire!  
 Licenced Bar - Raffle  
**Ticket £20 including ploughman's supper**



Two 'Warm Up' Appeal events. Details and Tickets: please contact Brian Woodrow 01234 349455 or email: [brianwoodrow538@gmail.com](mailto:brianwoodrow538@gmail.com)

**Celebrating 75 years (1943 - 2018)**

## AMIGO

The sun shone on those who took part in an evening ramble on Tuesday 26th June led by John Dixon which began at the Harrold Odell Country Park. The walk went through Odell Great Wood and superb views of the countryside were enjoyed. The walk lasted for about two hours and was about four miles in length.

Twenty-one people braved the heat and came on the Coach Trip to London on Thursday 26th July. After a two-hour ride the party enjoyed tea and coffee and light refreshments at The Ned, where our guide, Charlie de Wet met us. The Ned was formerly the head quarters of Midland Bank and is now a luxury hotel. From there, the group went to the London Mithraeum or Temple of Mithras, one of the Country's most significant archaeological sites. Charlie then took us on a fascinating walk through the City of London finishing at Tower Bridge. We were able to walk along the walkway and witnessed the bridge opening up to allow a sailing ship to pass through. After lunch, Charlie took us around some of the sites south of the river including the former Courage Brewery before we boarded the coach for our journey home.



The new session for 2018/19 will begin on **Tuesday 25th September** with a **Skit-tles Match** at the Bedford Arms, Souldrop. A buffet will be available at £6.00 per head payable on the night. Please let John Dixon (Tel. No. 01234 824959) know by Thursday 20<sup>th</sup> September, if you wish to have the buffet


An illustrated talk on the work of the Charity "**Mercy in Action**" will take place on **Tuesday 23rd October** at Oakley Methodist Church beginning at 8.00 p.m. The charity was started some 20 years ago by John and Allison Todd who came across a group of street children while they were on a family holiday. After feeding the boys and hearing their stories, they returned home and realised that something needed to be done to help. The charity rescue children from the streets, rehabilitate trafficked children, support families living in poverty, offer education programmes through child sponsorship, have drop in centres for students, foster care and feeding programmes ... and so much more. In the U.K. the charity has a safe house in Bath for homeless pregnant girls and are in the process of opening one in Oxford for misplaced young men. The charity also

offer apprenticeships within their retail outlets for young people who leave school early.

On **Tuesday 27th November** a talk will be given on the work of the charity "**The Leprosy Mission**". The talk will be held at Oakley Methodist Church beginning at 8.00 p.m. The Leprosy Mission is a Christian charity that has been working for over 100 years looking to break the chains of the disease that still ensnare it and stop so many people coming forward to get diagnosed. The charity works across 11 countries, not only meeting patients medical needs, but also sharing the Good News of Jesus with them and giving them a hope for the future.

A provisional date has been arranged for **Carol Singing** at the Bedford Arms, Oakley on **Tuesday 18th December beginning at 8.00 p.m.** This is because of a proposed change of management which it is understood will take place in the Autumn. Confirmation of the position will follow as soon as possible.

John Dixon



**Free Blood Test for Checking the Health of your Prostate**

**FOR ALL MEN AGED OVER 40 YEARS**

**PSA BLOOD TESTING DAY**




**DROP IN SESSION: – SATURDAY 22<sup>nd</sup> SEPTEMBER 2018**  
**10am to 1pm**

**AT**  
**BEDFORD INTERNATIONAL ATHLETIC STADIUM**  
**Barkers Lane**  
**Bedford**  
**MK41 9SB**

**Beds Prostate Cancer Support Group will have an awareness stand along with relevant literature and Group members to answer any questions**

**Free car parking at venue**  
**Refreshments available (tea, coffee and biscuits)**

**For further details contact:**  
**Brian Webb 01234 767256**  
**Steve Pearce 01234 960414**



BPCS Charity No: 1174019



## R J GASCOYNE

### THE PLUMBING, HEATING AND GAS COMPANY

Boiler changes, system upgrades, bathrooms, fault finding, servicing, maintenance, gas safety & landlord certificates, repairs, all heating, plumbing, drainage and gas work undertaken.

All from a friendly, reliable, trustworthy and professional engineer.

Contact Ryan on

TEL: 07980 209587

or EMAIL: [ryangascoynephg@gmail.com](mailto:ryangascoynephg@gmail.com)



## Uncomfortable with letting strange people into your home?

We are an **all-female** team of interior painters and decorators, working in the north beds village area. Fully experienced in hanging wallpaper, painting – including paint effects, restoring and repairing surfaces, wallpaper stripping and all general home decorating. We are all individually CRB checked, will provide references and testimonials showing the standard of our workmanship giving you peace of mind. We will come to your home to discuss your exact requirement, offer advice and produce a free written specification and quotation. We will then arrive on time, keeping disturbance to the minimum and deliver a quality job using only top quality materials.



### **OAKLEY ANGELS**

*The all-female painting and decorating team*

- Trustworthy
- Experienced
- Guaranteed work
- Peace of mind
- High quality work at a reasonable price

Phone: 07989 778345  
or: 01234 822499

## Oakley Allotments



What a summer! Great to be reminded what summers used to be but devastating for farmers and not too good for the allotment. Some seeds refuse to germinate in soil that is too warm so we have planted out those plants that we grew from seed at home and have a gap where the direct sowings would have been romping away in other years.



Regular watering has been essential, although we limit that to twice a week for established plants and daily for newly-planted seedlings, gradually reducing that in order to encourage root growth to seek water from deeper in the soil. There is moisture at depth but the surface of the ground has developed cracks more like crevasses and so the deeper moisture dries out too in areas most affected. Not only that but watering is not as effective as water just runs away down into the depths.

Everything seems to be late developing due to the late start followed by the recent heat. Even the old faithfuls, such as runner beans, which are usually prolific by this time, have produced very few beans.

The usually overlaid courgettes are slow but a more reasonable warmth is promised, which may extend the growing-season. We're losing daylight however and day length is just as important, if not more so, than temperature.



The hedgerows are full of blackberries and our own cultivated varieties are producing record quantities of sweet and juicy fruits. The kitchen at home has been a jam factory on more occasions this year than in previous years and the trend looks likely to continue for a while as we pass the 26lb mark for blackberries picked at this

moment.

Overall, the allotments are looking great, although we do have a number of vacated plots in need of new owners and certainly in need of clearing of weeds. I have passed on the baton to an able assistant, who has taken on some of the management work this year when I have been too busy with other work and projects. I believe that a general tidy-up is being planned soon although mowing has not been necessary for quite a while.

Please contact me if you would like an allotment, even if you would like to take one on for a year initially and give it a go.

Finally, I must mention Oakley Show: due to take place on the 16<sup>th</sup> of September. This, the third show, is open to anyone who would like to enter and there is a diversity of classes for produce, crafts, pictures etc. I suspect that the entries for garden produce may be a bit sparse this year but I will not be present as I have a pressing engagement in the Lake District.

I may have some more adventures to recount or I may just get wet – something that has been quite rare recently.

Steve Nicholas



## BLACK AND WHITE REVIVAL

*Established in 1992 specialising in:*

Photograph Restoration  
Darkroom printing : Hand Colouring  
Archival Family History Storage  
Antique and Repro. Frames  
Old Photographs of Bedfordshire c1910



**Helen Dawkins LRPS**

**01234 782265**

**[www.blackandwhiterevival.co.uk](http://www.blackandwhiterevival.co.uk)**



# Almond Garage Doors Ltd



- Servicing Bedford & Milton Keynes
- Spare Parts (including obsolete makes)
- Existing Doors Automated
- EMERGENCY Call Out Service
- New Sales & Installations (Free Quotations)



01234 828953

[info@almondgd.co.uk](mailto:info@almondgd.co.uk)

Fax: 01234 826024 ☺

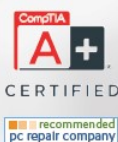
College Farm, Oakley, Beds, MK43 7RX

[www.almondgaragedoors.co.uk](http://www.almondgaragedoors.co.uk)



## Oakley.IT

maintain ■ IT  
repair ■ IT  
train ■ IT



**Jan Rymarz** – Principal IT Technician / Trainer

Fast PC and Laptop Repairs

Clear and Friendly Training

Fast and Efficient Service

Years of experience and services covering everything!

A few recent customer comments

"Great service"

"Trustworthy & reliable"

"Efficient & Affordable"

"Highly recommended"



# 07401 250 118

[help@oakleyit.co.uk](mailto:help@oakleyit.co.uk) | [www.oakleyit.co.uk](http://www.oakleyit.co.uk)





## Oakley Village Hall

Church Lane,  
Oakley,  
Bedfordshire, MK43 7RJ

A well-appointed village hall  
Main hall with stage and PA system  
(Main hall is air conditioned)

Separate meeting room with bar

Well equipped kitchen

For information and bookings  
please telephone 07788 796996



## OAKHAM DECORATORS LTD

INTERIOR - EXTERIOR - DOMESTIC - COMMERCIAL

PROFESSIONAL & RELIABLE LOCAL DECORATORS

With over 30 years experience

Specialists in wallpaper hanging

We can help with:

**Plumbing ♦ Carpentry ♦ Plastering ♦ Electrical needs**

Competitive prices for all trades

We are happy to help and advise

Call us now for a free no obligation quote call

Darren Hooton 07743 176201

Ray Quinney 07885 644973



Get fit whilst socialising at  
Oakley badminton club ☺

**WEDNESDAY NIGHT**

**7:30-9PM**

**LINCROFT SCHOOL**

For further details call Alyn Walker –

01234 824530 or 07557 441206

## NIGEL L. WILLE

PLUMBING & HEATING ENGINEER

GAS SAFE REGISTERED

BOILER REPLACEMENTS

FULL CENTRAL HEATING INSTALLATION

BATHROOM SUITES

RADIATOR REPLACEMENTS

TAP REPLACEMENTS

ALL DOMESTIC PLUMBING, HEATING WORK  
AND REPAIRS UNDERTAKEN

FOR A FRIENDLY SERVICE  
PLEASE CALL NIGEL

Tel: 01234 822962

Mobile: 07778 800595

Email: nigel.wille@sky.com





# theWI

## OAKLEY WI

Oakley WI meets on the second Tuesday of the month at 7.30pm in the Village Hall.

In the coming months we look forward to...

**TUESDAY 11th SEPTEMBER 2018**



Collecting Leeches

TRICIA THOMPSON promises an entertaining look at 'LEECHES AND LAXATIVES - VICTORIAN QUACKERY'.

**TUESDAY 9th OCTOBER 2018**



'MASQUERADE' is an amateur group of 10 performers, who will entertain with a programme of song, dance and monologues based on musical theatre.

**TUESDAY 13th NOVEMBER 2018**

PHILIP EDGE, a surgeon at Bedford Hospital, will bring us up to date with the latest 'SURGICAL TREATMENT OF ARTHRITIS'.

**TUESDAY 11th DECEMBER 2018**

The year ends with a traditional Christmas Party.

Visitors are most welcome to attend our September, October and November meetings.

For further information telephone 824296 or 826844



## OAKLEY GARDENING CLUB

This group meets at 7.45pm at Oakley Methodist Hall on the third Monday of the month.

**MONDAY 17th SEPTEMBER 2018**

Garden historian, MICHAEL BROWN returns to talk about 'DEATH IN THE GARDEN'.

**MONDAY 19th OCTOBER 2018**



Podington Garden Centre's knowledgeable expert NICHOLAS WARLICKER will pass on his tried and tested tips on growing fruit and veg. Bring along any gardening questions for him.

**MONDAY 19th NOVEMBER 2018**



CAROLINE BOWLDER presents a 'HISTORY OF GARDENING IN BEDFORDSHIRE'

**MONDAY 21st JANUARY 2019**



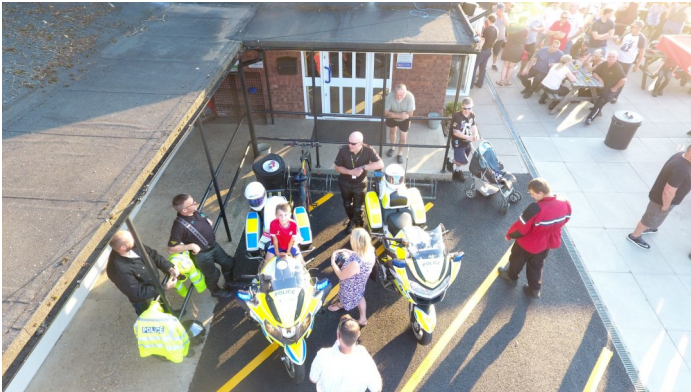
Beekeeper RICHARD DOWSETT shares his knowledge of bees and their importance to all of us.

Visitors are welcome at our meetings.

For further information telephone 823788 or 824703



# oakley *Motorcycle* club



Well, another busy summer for Oakley Motorcycle Club most certainly the busiest yet! The manufacturer theme nights continued enhanced by our motorcycle dealer sponsors being present and judging the best bikes. Thanks to the summer heat wave we only had to postpone one of the ten theme evenings due to predicted inclement weather and that was back in May! Every Thursday theme night right through from June to the Finals night on 9<sup>th</sup> August had exceptional weather meaning we were having between 250 and 330 motorbikes in attendance.



The biggest night of the summer predictably was the American theme night with not only 300 bikes but, thanks to Dave & Lesley Brown and their contacts in the Hot Rod Association, we had 75 show cars as well. As usual the cars were top quality with some dragsters and street legal dragsters thrown in.

The ten theme evenings led to the final night on 9<sup>th</sup> August when we were lucky enough to secure the services of a legend of world motorcycle racing from the 80's, the 1983 and 1985 World 500 and 250 Grand Prix Champion Freddie Spencer from Louisiana, USA.



Freddie was kind enough to judge the final and present the winning shield. Unfortunately the heat wave did not last up to that night and after a day of rain, it finally stopped by 4.30pm. Thankfully we were able to hold the judging and have the presentation before the heavens opened up again ten minutes after the winner Kevin Martin from Clapham received the winners shield and a £100 food and drink voucher kindly donated by Oakley Sports & Social Club for his immaculate 1978 Yamaha RD400.

Those who followed motorbike Grand Prix racing back in the 80's will not forget Freddie Spencer coming onto the scene and beating the big names of Barry Sheen and fellow American Kenny Roberts. Oakley MC are looking hoping to have an "Evening with Freddie Spencer" either later this year or early next year, as we did with Steve Parrish back in February. Watch this space - tickets will be available to all.

Baysie - Roger Bays - Chair OMC



# W&H PEACOCK

## AUCTIONEERS & VALUERS

### The Café at W&H Peacock Auction Centre



For a unique dining experience open six days a week why not visit our new café in Bedford Auction Centre? Set with modern Italian designer furniture, the Café overlooks the busy salerooms and comfortably seats over 100 customers. Groups and families with children are welcome to meet and professionals may choose to take advantage of our free wifi or book our private meeting rooms. Alternatively, you could choose to take-away and enjoy your refreshments whilst browsing our forthcoming sales. Our choice of breakfasts and homemade bakes are available all day and our freshly updated lunch menu and range of hot and cold drinks are sure to satisfy all tastes. Our professional and dedicated Café team look forward to welcoming you soon.

The Café is open Monday to Thursday 8.30am - 3.30pm, with extended opening on Friday to 7.00pm, and Saturdays from 8.30am - 4.00pm (Last orders for food are 1 hour before closing time).

Visit us at W&H Peacock Auction Centre, Eastcotts Park, Wallis Way, Bedford MK42 0PE

Tel: 01234 266 366

[www.peacockscafe.co.uk](http://www.peacockscafe.co.uk)

## W&H PEACOCK

### AUCTIONEERS & VALUERS

# Auction Sales and Valuations

Valuation, collection & auction service of individual items through to complete property and commercial clearances.

Call for a free no obligation collection quote or email [info@peacockauction.co.uk](mailto:info@peacockauction.co.uk)

**SALE ENTRIES NOW INVITED**



Eastcotts Park, Wallis Way, Bedford MK42 0PE  
**01234 266 366** [peacockauction.co.uk](http://peacockauction.co.uk)

the  
café  
AT  
W&H PEACOCK  
AUCTIONEERS & VALUERS

OPEN  
6 DAYS A WEEK



**View the salerooms for our upcoming auctions and then relax with a coffee and a slice of cake.**

Our unique café in Bedford Auction Centre with free wi-fi and views of the salerooms, comfortably seats over 100 customers.

### Senior Citizen discount available

Visit [www.peacockscafe.co.uk](http://www.peacockscafe.co.uk) for further details and to view our current menu.

Open Monday to Thursday from 8.30am - 3.30pm  
Extended opening on Friday to 7pm. Saturday 8.30am - 4pm  
(Last orders 1 hour before closing)

Eastcotts Park, Wallis Way, Bedford, MK42 0PE

**01234 266 366**





# **Oakley Sports & Social Club**

## **Family & Sports Bar**

<http://oakleyssc.com>

**Fun for kids**

**Quality Ales**

**Fantastic Facilities**

**Below Average Prices**

**Friendly Atmosphere**

**Freshly Cooked Food**

**Sky Sports & BT Sport**



### **OSSC Kitchen**

Download the full menus  
from our website

### **Thursday**

6pm - 9pm  
Full Menu

### **Friday**

5pm - 8pm  
Pizza Night

### **Saturday**

4pm - 6pm  
Full Menu



**824977**



**[info@oakleyssc.com](mailto:info@oakleyssc.com)**



**<http://oakleyssc.com>**