



# Oakley Newsletter



**Do you know where this was? See Page 16**

**Autumn 2022**

Number 92

**Look inside for**

**Oakley Celebrates the Queens Platinum Jubilee**

**Youth Club is Back**

**Oakley Kindergarten in Pictures**

**Oakley Village Show**

**Down Memory Lane**

**Local Plan 2040 Consultation**



**Front Cover :  
Oakley from Ruffs Furze  
In 1965**

**The Oakley Newsletter**

is published quarterly by Oakley Parish Council and delivered by parish councillors free to every house in Oakley – about 1,000 copies.

**Opinions and information**

in the Newsletter, both text and adverts, may not be endorsed by the Editor or the Parish Council.

**Next issue**

Final copy date for the  
Winter issue is 25th November 2022.  
The publishing date is 1st Dec 2022.

**Advertising rates**

Colour Advertisements  
Quarter page: £30

Half page: £60

Whole page: £120

Four consecutive quarter page adverts -  
discount 10%

Black & white advert rates are available  
upon request.

Loose inserts, any size up to A4: £100  
Invoices will be issued by Ann Paice, with  
payment to Oakley Parish Council.

**Editor**

Bill Chalker  
13 Bevery Close  
Oakley  
MK43 7SH  
07789 997733  
bill@chalker.eclipse.co.uk



**Printers**

White Hart Press  
58a York Street  
Bedford MK40 3RL



**Hello Children**

look out for  
Ten more  
little ones



# Parish Council News

## Autumn 2022

Welcome to the autumn edition of the Oakley Newsletter

It has been a very busy summer in the village with glorious weather for most of our events with lots of community picnics over the Jubilee weekend in various green spaces around the village. It was lovely to see residents of all ages coming together to celebrate. The editor was out and about with his camera and he has collated a lovely picture montage from other residents, in the middle of the newsletter, which shows how much we all enjoyed ourselves. Thank you to the organisers of the events and thank you all for attending.

### Brockwell Meadow

The work to enhance Brockwell meadow's environmental diversity will begin in December / January this / next year. Our contractor will be planting a range of wildflower seeds which he will manage in the same way as he manages Linch Furlong and the Riverside, with selective grass cutting and strimming to allow for the best environment for the flowers to flourish. He will also be helping us to plant more trees and bushes and will manage the existing trees to give us increased diversity. We hope that once the meadow starts to become established we will be able to provide information sessions for all residents to understand the progress.

As I mentioned in the last newsletter the new Pre-school will be able to access the meadow from their outside space to use as part of their curriculum. The parish council have agreed to provide a gate through new fencing into the pre-school area. However this will not be accessible to parents for dropping children off and will only be opened by staff during the school day.

### Jubilee tree

The tree that was provided by the Borough Council as part of the Queens Jubilee Green canopy has been planted on the village green and now has a plaque

Continued on page 3

## OAKLEY PARISH COUNCIL

### PARISH CLERK

**Ann Paice**  
31 Radwell Road  
Milton Ernest  
Bedford, MK44 1SH.  
07873 887370  
parishclerk@oakleyvillage.co.uk

### ACTING CHAIR

**Jane Walker**  
(Parish and Borough councillor) 11 Dewlands  
07952 879587  
jane@janewalker.co.uk

### Jonathan Abbott

(Parish and Borough councillor)  
13 The Furlong 950868  
jonathan.abbott71@icloud.com

### Pat Olney

33 Station Road. 824384  
pat.olney@btopenworld.com

### Sara Fardon

61 Lincroft. 824516  
sarafardon@yahoo.co.uk

### Michael Frampton

The Little House, The Drive  
822181  
michael\_frampton@btinternet.com

### Phyllis Jones

35 Ruffs Furze 910187  
phylmaj@gmail.com

### Stephen Nicholas

44, Grenidge Way 824345  
sbnicholas@gmail.com

### Gerry Sansom

21 Pavenham Road.  
823295  
gerrysan-  
som@btinternet.com

### Robert Saunders

College Farm. 822328  
rjsaunders5591@gmail.com

### Paul White

20 Reynes Drive. 825472  
paulwhite20rd@gmail.com

to commemorate the event. As we have had such a hot dry summer, the tree may appear to be struggling to survive. If you live near the Green and see it appears to be wilting, please give it a bucket of water to help it thrive.



### **Lincroft School planning application**

Shortly before the summer holiday Lincroft school applied for planning permission to erect a security fence between the primary school and secondary school playing fields. They also included a new multi-use games area with surrounding fencing alongside the current single storey classroom block at the edge of their current hard standing play area. Many residents were concerned as the application seemed to suggest that two metre high fencing would be installed around the whole perimeter of the field. Parish Councillors also had several questions about the application, so we invited the head and senior leadership team from the new Multi Academy Trust (MAT) to come to our June meeting to answer our questions. Many residents also attended to hear from the school.

The CEO of the MAT explained that Lincroft school needs a lot of money spending on the buildings to bring them up to date and they have pledged an initial £1.5m to do the most urgent works of which this and subsequent applications for a new dining hall and internal improvements are the priorities. He told us that the security fencing will only be between the two schools, not around the whole perimeter and that the MUGA is intended purely to be an expanded playground area and not to be used for regular PE sessions.

The parish council supported the application, with some conditions, including a request for noise dampening on the side of the fence closest to housing.

The parish council also asked the school for a public meeting with residents to be scheduled for later in the year when the school's longer term plans are known.

### **Oakley Recreation Ground**

Residents around the Recreation ground have continued to contact the parish council with their concerns about the noise they experience as part of the activities that are held there. We asked the Oakley Recreation Association for a meeting in the early part of the summer and from that they agreed to meet with the residents themselves which they have now done. As the issues are on-going it is important that they are reported to the committee so that everything can be considered when they review their summer activities, before planning for the autumn.

A reminder that the ground is run by the Oakley Sports and Social club, not the Parish council, so please contact them if you would like to discuss any of their activities. Their email is: [info@oakleyssc.com](mailto:info@oakleyssc.com). The Parish council's representative on the ORA committee, will continue to raise residents' concerns so please copy us into any correspondence that you have with them.

### **Footpath and verge Parking**

Parking on roads around the village is increasingly difficult as the number of households with multiple cars increases. However it is not acceptable to park on footpaths and verges. Parking on the verges damages underground services and makes the grass harder to cut, whilst parking on pavements makes it impossible for people with limited mobility and parents with young children in buggies to pass by safely. It may mean leaving your car parked a little further from your house than you would like, but please do not use the footpaths and verges to park on if you cannot find a space on the road near your house.

We have a particular problem in the Furlong because of the number of houses there with their garages in a block. Parking on footpaths and opposite the entrance to the garages blocks residents from accessing their garages. The parish council have agreed to ask the Borough Council to install bollards on the path and mark white lines in front of entrances to help improve the situation there.

Jane Walker Acting Chair

### **Parish Clerk's Working Hours**

The Parish Clerk is currently working from home Monday, Tuesday and Wednesday mornings. She is also in the Old School Meeting Room (at the rear of the building) on Thursdays between 10.00am and 2.00pm if anyone wishes to visit in person. She does not work on Fridays but any messages or emails will be picked up on Monday.



# Borough Council News

## Community Safety Survey

The Bedford Borough Community Safety Partnership wants to hear from you on their recently launched Community Safety survey. This survey will help assess crime and anti-social behaviour in the Borough and inform the new Community Safety Plan 2023-26.

The Partnership is made up of a number of different local organisations working together including the Council, Bedfordshire Police, Fire & Rescue Service, the Probation Service and local health leaders.

They work with housing associations, local businesses and voluntary/community organisations to tackle crime, disorder, anti-social behaviour, drug and alcohol misuse and increase people's perceptions about safety and well-being in our communities.

The survey will ask questions about how safe people feel in their local area and in the town centre, any crime or anti-social behaviour they have experienced, and wider questions about experiences of and perceptions of these issues within parts of Bedford Borough.

Visit <https://www.bedford.gov.uk/CSPConsultation> to find out more.

You can also request a paper version of the survey by emailing [CommunitySafety@bedford.gov.uk](mailto:CommunitySafety@bedford.gov.uk) or visiting one of the collection sites across Bedford Borough. Paper surveys are available for collection at Borough Hall, Cauldwell Street, MK42 9AP and all Bedford Borough libraries.

Have your say by completing the online survey by Friday 30th September 2022.

## Bedford Borough Parks Retain Prestigious Green Flag Awards

The Green Flag Award scheme recognises and rewards well-managed parks and green spaces, setting the benchmark standard for their management across the United Kingdom and around the world.

Addison Howard Park, Bedford Park, Harrold-Odell Country Park and Priory Country Park, have all yet again been included in this year's winners list. This is alongside the retention of the Green Flag Community Awards for Hill Rise Local Nature Reserve, Mowsbury Hillfort and Putnoe Wood, all

managed through our wonderful volunteer groups, the Friends of Hill Rise and the Friends of Putnoe Wood and Mowsbury Hillfort respectively.

For Harrold Odell Country Park this is the fifteenth year in a row that it has received the award. Priory Country Park is celebrating its twenty first award by receiving its highest score to date, which is a testament to the quality of the park and those responsible for maintaining it.

Over the last year, both Priory Country Park and Bedford Park have benefitted from significant improvement projects. For Priory Country Park this has been through the introduction of new all-weather footpaths around the lake and the installation of a new outdoor gym area. The large playground at the east of Bedford Park is currently having a sprinkling of fairy dust with its fairy-tale themed refurbished.

If you would be interested in volunteering in one of the Council's parks and green spaces, please visit [www.bedford.gov.uk/volunteering](http://www.bedford.gov.uk/volunteering) or sign up to the Community Volunteering email bulletin at [www.bedford.gov.uk/stayconnected](http://www.bedford.gov.uk/stayconnected).

## Northern Gateway Scheme

The scheme is now complete and appears to be making a positive impact on traffic flows, with the right hand filter into Sainsburys from Paula Radcliffe Way significantly reducing queues around the Manton Lane roundabout. The traffic lights are currently switched on permanently. Their effect on traffic flows is being monitored to see the impact this causes. This data will be reviewed after six months of operation and decision on switching to part time operation will be taken.

The lane markings on the approach roads are also being monitored to see if modification may be required.

## Disruption due to Emergency Road Works

The Borough is aware of the disruption caused when emergency road closures are put in place due to utility emergencies or Network Rail. The recent problems with Highfield Road and water mains bursting on the roads linking to Oakley have put pressure on our local roads. The council works with the companies to set up suitable diversion routes and also to try and ensure public transport provision is maintained.

By the time you read this, Highfield Road will have reopened. The Council will be asking Network Rail to try and limit the future impact of works on this bridge, but they are aware that the current work may not resolve the longer-term problems.

Continued on Page 6



## Our Services

### Hair

Wash, Cut & Blow Dry  
Restyle  
Balayage  
Colour Experts (Incl Correction)  
Children's Hair Cuts

### Hair Extensions

Beauty Works Hair Extensions

### Barbers

Wash, Cut & Finish  
Gents Skin Fade  
Hair Loss Advice & Maintenance

### Beauty

Skincare Specialists  
Luxury Facials  
Gels, Manicure & Pedicure  
Acrylics  
Waxing  
Lashes & Eyebrows  
High Definition Brows  
LVL Lashes  
Relaxing Massage  
Semi Permanent Makeup  
Tanning  
Ear Piercing  
Pamper Days

### Weddings

Make Up, Incl Bridal  
Hair Ups

### Facial Aesthetics

Regular Private Clinics Held



HAZEL KAYE HAIR,  
BEAUTY & FACIAL  
AESTHETICS



*Hazel Kaye Celebrating 30 Years  
Voted No. 1 Salon in the UK*

Stockists of Luxury Hair & Beauty brands. Premium fragrances including Savile Row Men's Fragrance & Grooming, Superdry, Seksy & Jane Packer, designed at Hazel Kaye.

### **Exceptional Savings**

Gift Vouchers - the perfect gift for those special occasions

Covid secure, spacious salon and free parking

**Book Appointments/Shop Online**

40 High Street, Oakley, Beds, MK43 7RG  
Tel:01234 826502,e:hazel@hazelkaye.com,  
www.hazelkaye.com



## Are you registered to vote?

The Annual Canvass of households, to update the Electoral Register, is now live. Each year the Borough Council have to, by law, find out who is eligible to register to vote.

Communications (via email, letter or form) were sent, in stages, to all residential properties in Bedford Borough from 21st July 2022. You can respond by internet or by phone. If these options are not accessible to you the response can be posted back. If you have received a form please do not return it if you have responded using one of the digital methods, as we only need one response.

As required by the Government, if you do not respond, they will have to send you another communication to remind you that you need to respond and this may also involve a personal visit to your property.

If you have recently moved address it is important you look out for your communication and check whether you are registered at your new address.

Every year the Council check the electoral register to make sure that any resident who is eligible to vote can do so. Follow the steps you have been sent so that you can have your say in future elections.

**Councillor Jon Abbott**

Telephone: 07784 549180

Email : jonathan.abbott71@icloud.com

## OAKLEY RAILWAY STATION SIGN

I have been contacted by someone who is a railway memorabilia buff and he has to downsize.



Part of his collection is the 7ft by 2ft Oakley Station Sign which is available to anyone interested in purchasing; please make contact through Graham Palmer on 07710 462535.



## Almond Garage Doors Ltd



- Servicing Bedford & Milton Keynes
- Spare Parts (including obsolete makes)
- Existing Doors Automated
- EMERGENCY Call Out Service
- New Sales & Installations (Free Quotations)



01234 828953

info@almondgd.co.uk

Fax: 01234 826024

College Farm, Oakley, Beds, MK43 7RX

[www.almondgaragedoors.co.uk](http://www.almondgaragedoors.co.uk)



*Bring your  
garden  
to life!*



**OAKLEY**  
BUILDING & LANDSCAPES



Artificial Grass | Building & Landscaping  
Driveways, Paths & Patios  
Timber & Composite Decking

---

📞 01234 915049    ✉ info@oakley-landscapes.co.uk  
📱 07803 749340    🌐 www.oakley-landscapes.co.uk











# Oakley Village Show



Well it is nearly time for our Show on **Sunday, 18th September** make sure that you get your entry forms completed and returned to us. If you cannot find yours just contact us and we will get another one to you, alternatively all the information is on our Facebook page.

It has been a difficult year for growers but hopefully you will still have fruit and vegetables to enter in addition to the baking, crafting and preserving that you are all so good at.

The inaugural presentation of the Terry Youngman Art Awards to Key Stage 1 and Key Stage 2 pupils at Oakley Primary Academy took place this year and will feature in the Winter Newsletter.

Oakley Show is another opportunity for budding young artists to not only demonstrate their talents by entering the art and craft children's classes but also to win some vouchers to spend at Milton Ernest Garden Centre.

Even if you are not an artist there are plenty of other classes to enter to show us what you can make, bake and grow. Under 16s can enter any of the classes for free (you can enter the adult classes too but your age will only be taken into account in the children's classes)

It would be lovely to have a new name on the Best in Show plaque this year so please have a go and enter as many classes as possible.

Oakley Show Committee

Tel: 07778 537427 for any enquiries



## Oakley.IT

maintain .IT  
repair .IT  
train .IT



**Jan Rymarz** – Principal IT Technician / Trainer

Fast PC and Laptop Repairs

Clear and Friendly Training

Fast and Efficient Service

Years of experience and services covering everything!

A few recent customer comments

"Great service"  
"Trustworthy & reliable"  
"Efficient & Affordable"  
"Highly recommended"



# 07401 250 118

help@oakleyit.co.uk | www.oakleyit.co.uk





## Learn CPR in 15 minutes with RevivR™ CPR Training

**Most of us will witness a cardiac arrest in our lifetime. Be ready for that day with RevivR, a fast, free and easy-to-use CPR training course provided by the British Heart Foundation**

What is 'BHF RevivR'?

'BHF RevivR' is a web-based app that allows users to learn the steps to performing lifesaving bystander CPR and how to use defibrillator.

Can I learn how to save a life in 15 minutes?

You can help save a person's life by knowing what to do in an emergency. Going through this short training you will learn the steps to perform CPR.

Following these simple instructions in case of an emergency, can increase the chances of survival of a person suffering an out-of-hospital cardiac arrest.

Sara Fardon says "I stayed in a Travelodge recently and there was a notice about RevivR. It's a short 15 minute course to inform you what to do in order to perform CPR. You practice on a pillow or cushion, whilst following very clear instructions. I did in the hotel room and it was very informative and easy to follow. The course also explains how a defibrillator works and how the emergency services will tell you what to do in the event of one being needed.

**We have two defibrillators in Oakley** – one is by the village hall and one outside Lincroft school. I hadn't given any thought to CPR, but I was so impressed by this short informative course I decided to spread the word. Someone may thank you one day, if you are able to put into practice and help save a life"

To find out more look up [RevivR.bhf.org.uk](http://RevivR.bhf.org.uk)



GARDEN WALLS TO COMPLETE EXTENSIONS

BRICKWORK | POINTING | DRAINAGE | WINDOW / DOORS

ALTERATIONS | GARAGE CONVERSIONS | KNOCK THROUGH

UPVC WINDOWS & DOORS | PLASTERING | CHIMNEYS | +MORE

[WWW.BEDFORDBRICKLAYING.CO.UK](http://WWW.BEDFORDBRICKLAYING.CO.UK)

07732 428 993

City & Guilds

CSCS  
CONSTRUCTION SKILLS  
CERTIFICATION SCHEME



# Welcome back to Oakley Youth Club.



We hope you all enjoyed a wonderful summer and enjoyed the sunshine.

This year the start of the new term has brought with it some changes to the youth club.

We welcome new youth club leader Sonya and a new assistant Jordanna, joining with Jules who is staying with us. We will be working together as a team to keep the youth club enjoyable for all those who attend and will look forward to meeting faces old and new.

Youth Club reopens on the **16th September 2022**, at the Old School. We have new opening hours of **7 – 9pm**. Entrance fees are £2 per session and tuck shop will also be available for you all to enjoy.

We really look forward to welcoming children between 11 – 13 to the Youth Club. Our aim is to provide a safe space for children to relax and enjoy some time together and we have plenty of fun activities to enjoy.

To ensure we have all necessary information all children will need to register for Youth Club. Please email [OakleyYouthClub@gmail.com](mailto:OakleyYouthClub@gmail.com) for a form, message Sonya on 07837424679 or contact Sonya on Facebook and I will send you details.

A big thank you to the Parish Council for the continuing support of the Youth Club!

Sonya, Jules, Jordanna, Sara and Pat

## Youth Club Report



We are pleased to report that we are fully ready to go with new Leaders for the Youth Club, who all live in the village. Sonya Playford is the leader and a young mum Jordanna Arthur who will be helping her. Jules Taylor who has been helping Dawn since January is also going to join the team. We are starting in September on Friday the 16th at 7.30. The team will be contacting the former members of the youth club and will be sending out to the schools for new members. So, watch for information.

Emma is continuing as treasurer, but we need a new person to take her place as she is very busy with work and has taken on new responsibilities. Thank you, Emma, for all the work you have done for the youth Club.

### **New Treasurer needed for the Youth Club**

**Emma is very willing to explain the process and hand the accounts over. It involves booking in clients' money and the tuck shop money each week and keeping a monthly running total. We pay the salaries monthly via the bank. We are very fortunate to have the grant from the Parish Council to cover the rent of the Old School, salaries and the cost of equipment.**

We are a very motivated supportive team and very proud of our youth club. So, if you would like to be involved with our team and would like to part of the youth club in this role. Please contact Pat Olney on [pat.olney@btopenworld.com](mailto:pat.olney@btopenworld.com) or 01234824384 or Sara Fardon on [sarafardon@yahoo.co.uk](mailto:sarafardon@yahoo.co.uk) or 01234824516

## Oakley Allotments

It is probably no surprise that this issue's allotment report focuses on the weather, as this year has been exceptionally dry. We record rainfall daily as our view from the breakfast table includes a rain gauge installed in the garden, so it is something we cannot forget to do. This year started off exceptionally dry as we recorded only 5mm of rain in the entirety of January.

We also have a daily indication of the amount of sunshine, although this is an indirect measurement resulting from a daily monitoring of the amount of power our solar panels generate. There has been a lot of sunshine this year and also record high temperatures.

This has all meant that the year has been a challenge for allotment gardeners: it has not just been a matter of having to water more often but withering temperatures have affected many of our plants. Some have failed to germinate and others are progressing very poorly as, basically, we are experiencing a climate which is suddenly inappropriate for our traditional seasonal planting choices.

Our runner beans have not fared well, with very low yields so far. Courgettes are nowhere near as prolific as they very often are – this has meant that courgettes have been growing in manageable sizes and quantities for a change.

Fruits have been more successful, where stressed plants tend to fruit more heavily as a survival mechanism. Catching earlier rains (there were some) our blackcurrants were a reasonable size and our cultivated blackberry has produced large fruits. Surprisingly, despite a lack of rain and watering our first-early potatoes have produced a good crop of fair-sized tubers – I have great hopes for an entry in Oakley Show in September.

The recent drought was relieved by a heavy downpour on the 17<sup>th</sup> of August when our gauge collected 25mm of rain within a few hours. Our water butts, both at home and the allotment, were filled to at least 50% capacity. This has made recent watering sessions at the allotment a lot quicker as the trek to our nearest tap adds a



good half-hour to the whole exercise.

In closing, I have persuaded a fellow allotment enthusiast to contribute to this newsletter: -

Chris W. writes...

### My Experience As a New Allotment Holder

*I took on my half plot last November. It had been neglected for many years; the grass was waist-high, the shed had peeling paint and old, rotting wooden boards littered the site.*

*I had only grown vegetables and flowers in my small garden previously, so it was quite a challenge.*

*My husband and I recycled the wooden boards to make raised beds. The first bed created was for all the strawberry plants I found on the plot & on the nearby pathway. This spurred me on.*

*Digging the beds was hard work but with advice from the other plot holders I filled the beds with sand to break down the clay and scattered Fish, Blood & Bonemeal to boost the soil.*

*I have planted runner beans and sweetpeas, grown from seed, plus carrots (in a tub), beetroot, chard, spinach, sweetcorn and a courgette. I love flowers, so I have two beds of Dahlias, grown from tubers. It is a huge delight to see everything growing.*

*I still have three more beds to dig and lots more to learn.*

Thank you Chris.

Steve Nicholas

### Steve's Snippet No. 59

I noticed some while back that our electric kettle takes about 5 seconds before it switches off after coming to the boil.

I already heat just enough water for the task at hand so, if I am near the kettle I now switch it off manually, hopefully saving the planet and my bank balance some small amount (which, over time, accumulates to become a not-so-small amount).

I was then sidetracked into considering whether my tea really needs boiling water to enable it to be brewed for best enjoyment – are we heating water to an unnecessarily high temperature and wasting resources?

Taking tea as our subject – other beverages are available – depending on its type, it might be better brewed at a temperature as low as 60 degrees C.

I am willing to undertake a series of experiments to determine the ideal temperature (and brewing time) needed to coax the best flavour from my chosen teas – yes, more than one type.

It may take some time.

Steve Nicholas



# Oakley Rural Day Centre

Oakley Rural, The Old School, Lovell Road, Oakley, Beds, MK43 7RX

Tel: 01234 824935 Mobile: 07733 227374

Email: oakleyruraldaycentre@yahoo.com

Web: www.oakleyruraldaycentre.weebly.com

Registered Charity No: 1060283



## NEWSLETTER Autumn 2022

**Welcome** to our latest Newsletter. If anyone has access to the internet please visit our website, [www.oakleyruraldaycentre.weebly.com](http://www.oakleyruraldaycentre.weebly.com) The site is updated regularly with the latest news from the centre.

We also have a **Facebook** page for anyone who has a **Facebook** account. This will be updated with the latest news and photographs of events at the centre. The **Facebook** page can be found at [www.facebook.com/oakleyruraldaycentre](https://www.facebook.com/oakleyruraldaycentre) We are also producing articles in various publications throughout Bedford and surrounding areas to raise the profile of the centre.

### DAY CENTRE

Our Day Centre provides our older people with a place where they can make friends in a warm and comfortable atmosphere. A range of activities including crafts, entertainment, quizzes and good old conversation are at the heart of our day.

We serve freshly prepared home cooked lunches together with tea, coffee and toast at the start of the day with beverages throughout. The Centre is open Tuesday, Wednesday and Thursday.

For details of costs and advice please contact Lynne on 01234 824935 or 07733 227374.



**Enquiries welcome from Bedford and surrounding villages in North Bedfordshire.**

### PLATINUM JUBILEE

We had a wonderful party week celebrating the Queens Platinum Jubilee. It was lovely to see some past clients and volunteers for the celebrations on Tuesday. It made for a great atmosphere and everyone enjoyed chatting and catching up.



Clients hard work over the weeks leading up to the jubilee really paid off and the hall was decorated with the paper chains and bunting they had put together. Clients could read books about the Queen and volunteer Ann brought in some really interesting publications from the Coronation. Before lunch we toasted the Queen with a non alcoholic grape fizz and sang the National Anthem. Our cook Angela did a sterling job preparing a buffet lunch. For dessert clients could have trifle, strawberries and cream or a wonderfully made and decorated jubilee cake.

In the morning we split into teams and played a British based word game. In the afternoon we played pass the parcel which had a Royal family related question between the layers. After that we played Royal Bingo which everyone enjoyed. All our clients went home with a Union Jack pen and notepad as a memento.

### ACTIVITIES

We are planning to have a seaside theme day at the end of August. We are going to have fish and chips from the chip shop and an ice cream afterwards.

We will be taking part in activities including a sand castle competition. I will give details on how it went in the next newsletter. Many thanks to Age UK who visited the centre. This was very useful and clients could ask questions regarding their services and what benefits they may be able to claim. They gave us an array of information leaflets which is very useful.

I suppose the next one we will be talking about the build up to Christmas, WOW!



Sales, Lettings & Auctions



MAYFAIR  
OFFICE GROUP

move  
withUS



BRITISH  
PROPERTY  
AWARDS

2021



GOLD WINNER

ESTATE AGENT  
IN BEDFORD

Have you seen... We **won!**  
For a winning service, **talk to us.**

01234 327744 | [sales@laneandholmes.co.uk](mailto:sales@laneandholmes.co.uk) | [laneandholmes.co.uk](http://laneandholmes.co.uk)



# Down Memory Lane

If you ever wondered what Oakley looked like before August 1965 then here is the view looking up towards Browns Wood from Ruffs Furze when the first houses had been built. The second picture shows the first houses to be built.

If you have any memories of early Oakley tucked away in your albums feel free to let me have them and we can make this a series!

Bill Chalker, Editor



## Toddlers celebrate 15 happy years



**Playgroup Opened in 1968.** Further to Pat Olney's article last quarter, a village member came forward with a paper cutting that celebrated 15 happy years of the existence of Oakley Playgroup (which became Oakley Pre-school that we know today). Editors Note : additional verification comes from the fact that my 3 year old son (at that time) is waiving at you in the picture!



## A bit of bell ringing history

Let us take a look at some of the history behind the ringing of church bells...

It is thought that the use of bells in churches dates back to 400AD when Paulinus of Nola, an Italian bishop, introduced bells as part of the Catholic Service.

During the 1600s, after the desecration of churches in the Reformation, church bells were rehung, often using new technology which gave the ringers much more control, enabling them to stop and start the ringing at will. What we call 'change ringing' followed, which is the ringing of bells in a constantly changing order.

During the reign of James II (1633-1699) bell ringing became a pastime of the aristocracy, providing them with exercise and intellectual stimulation. But in the 1700s behaviour among rural bell ringers deteriorated and locals would spend their bell ringing earnings in the village pub.

Women began to participate in bell ringing in 1896 and in 1912 the Ladies Guild of Change Ringing was formed.

The role of Tower Captain, someone to keep order and run the ringing, did not become commonplace until 1900. Tower Captains back then would hand out penalties for bad ringing!

During World War II all church bells were silenced, apart from ringing to inform communities of an impending invasion by enemy troops.

More recently, approximately 95% of all the church bells in the UK rang in the Millennium on the 1st January 2000, and for the 2012 Olympic Games in London. The opening ceremony featured the largest harmonically tuned bell in the world – the Olympic Bell, weighing 23 tonnes!

Thanks to [www.bellringing.org](http://www.bellringing.org) for this information.

The Oakley Band of Bell Ringers practice on Friday evenings from 8pm to 9:15pm and ring on Sunday mornings before the services at St Mary's Church. If you would like to come along on a practice night to see what it is all about and to have a go, please contact our Tower Captain, Bill Sellars on 07980 745292 or email [thesellars@btinternet.com](mailto:thesellars@btinternet.com).

Shelley Abbott



## AMIGO

### Tuesday 25th October 2022

An opportunity to play skittles at the Bedford Arms, Souldrop, beginning at 7.30 p.m. A buffet including a variety of sandwiches with chips will be provided at the cost of £6.00 a head, payable on the night.

Please let John Dixon know by the 18th October if you wish to come and have the buffet. John's telephone number is 01234 824959 and his e-mail address is [jwdixon30@gmail.com](mailto:jwdixon30@gmail.com). Please also let John know if you can offer or require a lift.

### Tuesday 13th December 2022

Carol singing at the Bedford Arms, Oakley from 8.00 p.m. We shall also be able to use handbells.



### Tuesday 24th January 2023

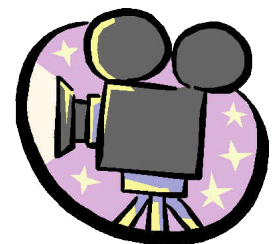
A film show at Oakley Methodist Church beginning at 7.30 p.m.. The film to be confirmed.

### Tuesday 28th March 2023

A light-hearted quiz hosted by Sue Brecknock beginning at 7.30 p.m. at Oakley Methodist Church

### Thursday 22nd June 2023

A guided tour of part of London led by our superb guide Charlie De Wet is to be arranged. Details to follow.



John Dixon





## Oakley Kindergarten News

From 1<sup>st</sup> September 2022 we are officially Oakley Kindergarten and will be opening on our new site for the new term. We will have the capacity for forty children at any one time; 3 in Rosebuds (Baby Room), 13 in Petals (Toddler room) and 24 in the Blossoms (Pre-school Room). We will now also be offering childcare from 8am-6pm and for up to 45 weeks per year. Please see the latest photos of the inside of the building and do get in touch if you would like more information or to come and have a look at what we have to offer.



### **Admissions**

If you would like to register your child for a place at the Kindergarten, please contact us on 01234 826452 or by email: [info@oakleypreschool.com](mailto:info@oakleypreschool.com) Our website is: [www.oakleypreschool.com](http://www.oakleypreschool.com)

Follow us on Facebook to keep up with our latest news and events.

For information on funding you can see details on our website with a link to Childcare choices or alternatively you can contact the Family Information Service 0800 023 2057 Sally Martiello



Baby Room



Toddler Room





## Bedford Borough Council's Draft Local Plan 2040

Consultation - June/July 2022

### Oakley Parish Council's Response

The Local Plan is an important document because, amongst other things, it is where Bedford Borough Council (BBC) details the scale and type of additional housing, industrial and associated infrastructure development that will be needed across the Borough over the next 15/20 years.

The Local Plan allocates and designates land for various types of development and by doing so also identifies areas of land that will be protected from development in the future.

The current Local Plan 2030 was approved by Government Inspectors and adopted by the Council in 2020. As part of this approval process, Inspectors required BBC to carry out a review of the Local Plan 2030 and develop a new one, the Local Plan 2040, because they said, further details would be available by then of the government's intentions for very significant additional development across the Oxford – Cambridge Arc. Also, a decision would have been taken regarding East – West Rail and the new route from Bedford to Cambridge.

Unfortunately, neither of these two very important strategic plans has been clarified.

Nevertheless, the government has insisted that BBC goes ahead with the new Local Plan 2040 which must be submitted to the government for approval during 2023.

To this end, during June/July BBC presented their Draft Local Plan 2040 for consultation with Town & Parish Council's, residents, businesses etc. etc.

Following this, BBC will take into account the views of those responding to the consultation and submit its final Local Plan 2040 to the government for an "Inspection in Public" and final approval early next year.

#### **Oakley Parish Council has responded as follows:**

- 1. The PC supports the fact that there will be no further allocation of housing in the village of Oakley beyond the 50 new homes already agreed in both the Local Plan 2030 and the Oakley Neighbourhood Plan.**
- 2. The Parish Council is strongly opposed to the overall number of new homes proposed for the Borough.**

A principal feature of the Local Plan 2040 is a massive +40% increase in overall housing numbers from around 970 new homes per year in the current Local Plan 2030 to 1,355/year in the Local Plan 2040. It is the highest housing target in the history of Bedford Borough.

This equates to a total of 27,100 new homes over the 20 year period to 2040 – equivalent to building 7 new towns the size of Ampthill (4,000 homes) or 27 new villages the size of Oakley (1,000 homes).

It will result in a population increase of around +50,000 people, a +30% increase on the current population of the Borough.

The target is higher than that of any LA in the neighbouring counties of Oxfordshire or Cambridgeshire.

This level of development and the accompanying hard & soft infrastructure, will adversely impact all communities, destroying large areas of open countryside and impacting our environment right across the Borough at a time of Climate Change and Biodiversity loss.

The huge increase is due to the governments "Standard Method" algorithm which all Local Authorities (LA's) must use to determine the number of new homes they must build, despite it being widely criticised as based on outdated and inaccurate 2014 housing formation data.

BBC's own independent "Housing Need Assessment" states that the entire housing need of all the people of the Borough, plus the normal level of inward migration from elsewhere in the UK, can be met by building around 1,000 new homes/year – a very significant difference and roughly in line with the current Local Plan 2030.

BBC has stated that the "Standard Method" assessment of 27,100 new homes is "unsustainable" but, they say they are unable to move from the governments housing target.



Surprisingly, BBC also state that the 27,100 new homes in their Local Plan 2040 is required to meet the higher housing numbers in a document called the "Oxford/Cambridge Arc Joint Declaration between Government & Local Authorities" which BBC has signed but has not published on its website.

So there is serious confusion here and that needs to be clarified.

### **3. East – West Rail, Bedford to Cambridge Route**

Oakley PC considers that EWR should be routed along the A421 transport corridor rather than coming north through Bedford towards Clapham/Twinwoods and then east through open countryside to St Neots.

The 2040 Plan states that new developments at Kempston and Little Barford at the intersections of EWR stations and the A421 would enable road and rail connections. Therefore, an EWR route alongside the A421 would support both the new developments and existing communities, providing true transport hubs for both road and rail links.

### **4. Insufficient Consideration given to the need for Senior School places.**

Oakley PC considers that insufficient consideration has been given to senior school places for students from new developments.

500 additional homes will be built in both Clapham and Bromham but Lincroft School is in a poor state of repair and has no space to expand to accommodate additional students.

School place planning is not transparent in the 2040 Plan.

### **5. Insufficient consideration given to Water and Sewage Capacity.**

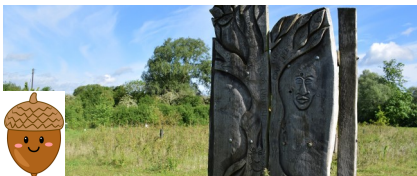
Oakley PC considers that insufficient consideration has been given to how adequate water and sewage systems can be developed to supply the massive scale of new developments proposed in the Local Plan 2040.

Bedford Borough is in one of the driest parts of the country and has already been identified by the Environment Agency as being an area under "severe water stress".

The current sewage system is broken and unable to support current communities in an environmentally sustainable manner, let alone any substantial increase in new homes and businesses.

***For further information please contact the Clerk to the Parish Council.***

## **Linch Furlong**

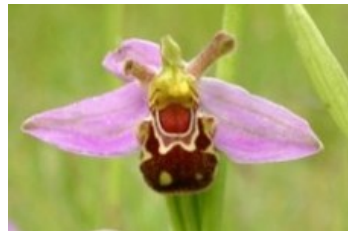


July was fabulous at Linch Furlong. The pyramid and bee orchids were in full bloom as were the oxeye daisies. Yellow rattle plants were scattering their seeds and when they do this they rattle. The scabious, the common birds foot trefoil, which we used to call eggs and bacon, and the purple vetch were starting to flower .

I was pleased to see so many people enjoying the nature reserve. The Family Messy church had a fun day with games, a quiz looking for flowers and trees and of course a picnic.

August saw the blackberries a month early. They were very tasty to eat when walking the dog.

Many people were picking the berries and enjoying apple crumble as my family did. The field was awash with hedge bedstraw and Lady's bedstraw



with beautiful yellow and white flowers all over the field. The crab apples were forming into lovely apples but they will not be ready until late September or early October. The sloes will be ready in October and you can make Sloe gin to go with your meat and crab apple jelly.

Hasten to the community orchard where, I am reliably informed, the pears are very ripe and ready for picking. The apples will be ready in September. They are all heritage trees and were grown in Bedfordshire.

The orchard is at the far side of the Allotments in Pavenham Road.

Pat Olney



David Russell Bespoke Builders Ltd are an expert team of building contractors who faithfully serve Bedfordshire and surrounding area.

When you need professional and dependable building services in the Bedfordshire area, call David Russell Bespoke Builders.

We serve domestic and commercial clients and are dedicated to excellence, completing all of our projects to the highest possible standard.

**TRUST DAVID RUSSELL BESPOKE BUILDERS**

**WITH YOUR DREAM PROJECT**

**WITH YEARS OF EXPERIENCE IN ALL AREAS OF TRADE, YOUR CONSTRUCTION PROJECT COULDN'T BE IN BETTER HANDS**

**Contact us on :**

**Email : [info@davidrussellbuilders.co.uk](mailto:info@davidrussellbuilders.co.uk)**

**Telephone : 07982663383**

Follow us on instagram @davidrussellbespokebuildersltd and on facebook @David Russell Bespoke Builders



**NFB**  
National Federation of Builders





## Phantom Sprayer

I have just taken a walk around the Station Road field, all beautifully mown around the edge so no grass seed worries.

I WAS very disappointed however, to see that there was a lot more dog poo. I had been pleased it was so much better recently as so many people enjoy a walk around there, not necessarily with dogs. However today there was evidence that I would think two or three dogs are regularly walked there and then the mess left behind.



On the Station Road side, it is mostly a smaller dog and then a more medium sized dog alongside the Tudor Rose and down the other side and possibly a larger dog too.

I know we cannot photograph the owners and publish the photos as that would invade their privacy, but surely, we could photograph the dogs, if we happen to see it happen and publish those pictures!!

I have read in the newspaper that some councils are now heftily fining people walking dogs if they are not carrying a poo disposal bag. How long before our mayor picks up on that and follows suit?

So, watch out, or even better start straight away so you never get caught out, either without a bag or not picking up.



## Steve's Snippet No. 60

Number 60 - I think a celebration is in order!

I am a good setter of cryptic (some say "vague") crossword clues - my brain has a sort of one-way valve system that means I cannot often solve cryptic (vague) crossword clues though.

Since a demonstration is worth a thousand words (and you really want as few words from me as possible, I understand) I am offering a valuable prize for the first correct solution to the following:-

*Sounds like Weatherfield's 50s matriarch earned a nickname performing on stage. (10,8)*

Email me or trip me up in the street - the first correct answer is the Winner!

(The solution will be published in the next newsletter).

Steve Nicholas

# WHITE'S Lawnmowers & Garden Machinery

Sales ~ Service ~ Parts ~ Hire  
Briggs & Stratton Service Centre

**STIHL** **TIGA** **AL-KO**



**LAWNFLITE** **MTD** **Indespension**  
For A Growing World. ... & many more

LARGE SELECTION FOR ALL YOUR GARDENING NEEDS

**01234 826066**  
**info@whites-online.co.uk**

www.whites-online.co.uk  
College Farm, Oakley, Bedford, Bedfordshire, MK43 7RX

# BedsRCC features on BBC's Escape To The Country

Bedfordshire Rural Communities Charity made a star appearance on a recent episode of Escape to the Country, aired on Tuesday 31st May 2022.



The episode followed Chris and Albert's search for a home in Bedfordshire. It opened with a clip early on of our Environment and Community Officer Mike Fayers, who is involved in our Wellbeing Walks and Good Neighbour Schemes:

"There's some beautiful villages in Bedfordshire, it's really lovely looking round. So although I've lived here as long as I have, I've still got a lot more exploring to do." - Mike Fayers

With 800 miles of public right-of-way in Central Bedfordshire alone, the county is filled with places to walk, run and cycle. Our deputy CEO Cliff Andrews shared about the Biggleswade Green Wheel in today's episode, which BedsRCC was involved in bringing about. Cliff explained how the Green Wheel benefits the local community, explaining the many ways it gets used. When asked who uses the Green Wheel, Cliff said:

"Everyone. Loads of people from the local community, runners, walkers, cyclists, parents with buggies, parents teaching kids to ride their bike, dog walkers, everyone."

The episode highlighted how the Friends of Biggleswade Green Wheel look after the Biggleswade Green Wheel by keeping the vegetation off the path so it's clear for everyone to use.

We also saw a Wellbeing Walk in action, who regularly use the Green Wheel for walks. One wellbeing walker explained the importance of paths like these:



It's just uplifting. ... It really is very pleasant to just go out and forget all your worries.

As well as featuring some of our staff here at BedsRCC, the episode also highlighted how important volunteers are to the work we do. If you're interested in getting involved and making a difference to your local community, visit the volunteering page of our website ([www.bedsrcc.org.uk](http://www.bedsrcc.org.uk)).

Watch the Bedfordshire episode (Series 22 Episode 52) of Escape to the Country on BBC iPlayer.



## Oakley Educational Foundation

This Foundation exists to assist young people between the ages of 16 and 25, who live in the Parish, with grants towards the cost of books and tools, etc. in furtherance of their education.

Applications are accepted in the months of May and November and must be accompanied by receipts of purchase. Application forms can be obtained from the Clerk, Louise Tunley.

For further information, or for an application form, please contact Louise Tunley on 07917 462213, by post at 19 Goldington Road, Bedford, MK40 3JY or by email at [louise\\_tunley@yahoo.co.uk](mailto:louise_tunley@yahoo.co.uk).



# Oakley Village Hall - have your say

Do you hire the Village Hall? Do you attend classes or functions there? Do you vote there?

Join our committee and have your say on how the Hall should develop and how it is run.

Find out more from our Secretary:  
Ruth Bender | [r.bender@cranfield.ac.uk](mailto:r.bender@cranfield.ac.uk) | 07941 679204



|  |   |
|--|---|
| <div data-bbox="113 1131 347 1368"> </div> <div data-bbox="355 1131 772 1368"> <p>The Cafe at W&amp;H Peacock is<br/><b>OPEN</b></p> </div> <div data-bbox="124 1395 766 1489"> <p>View the salerooms for our upcoming auctions and then relax with a coffee and a slice of cake.</p> </div> <div data-bbox="132 1514 758 1682"> <p>Our unique cafe in Bedford Auction Centre with free wi-fi comfortably seats over 100 customers. We serve cooked breakfasts, paninis and sandwiches, light lunches and snacks plus a range of hot and cold drinks.</p> </div> <div data-bbox="98 1711 786 1899"> </div> <div data-bbox="108 1904 292 2121"> <p>Eastcotts Park,<br/>Wallis Way,<br/>Bedford,<br/>MK42 0PE<br/>01234 266 366</p> </div> <div data-bbox="367 1919 783 2078"> <p>Visit<br/><a href="http://www.peacockscfe.co.uk">www.peacockscfe.co.uk</a><br/>for more details on our opening hours and to view our full menu.</p> </div> | <div data-bbox="946 1131 1362 1225"> <p><b>W&amp;H PEACOCK</b><br/>AUCTIONEERS &amp; VALUERS</p> </div> <div data-bbox="790 1232 1503 1568"> </div> <div data-bbox="828 1574 1477 1632"> <h2>Auction Sales &amp; Valuations</h2> </div> <div data-bbox="860 1639 1441 1758"> <p>Valuation, collection and auction service of individual items through to complete property and commercial clearances.</p> </div> <div data-bbox="900 1771 1396 1845"> <p>Call for a free no obligation quote or email <a href="mailto:info@peacockauction.co.uk">info@peacockauction.co.uk</a></p> </div> <div data-bbox="853 1865 1444 1964"> <p>SALE ENTRIES NOW INVITED<br/><a href="http://www.peacockauction.co.uk">www.peacockauction.co.uk</a></p> </div> <div data-bbox="820 1986 1054 2116"> <p>Eastcotts Park,<br/>Wallis Way,<br/>Bedford, MK42 0PE</p> </div> <div data-bbox="1117 2007 1505 2085"> <p><b>01234 266366</b></p> </div> |
|--|---|





### HARVEST SERVICES

Both churches are holding Harvest Festival services on Sunday 2nd October at 10.30am. These are always joyful events and all are welcome to give thanks for God's goodness to us. Donations of cash or non perishable food for the Foodbank welcome.



### REMEMBRANCE SUNDAY

This year Remembrance Sunday falls on 13th November. There will be services in both churches at 9.45am, followed by a joint Act of Remembrance at the village War Memorial at 11am.



### SERVICE OF REMEMBERING

During October we will be holding two 'Remembering Services' to remember and give thanks for loved ones who have died. Everyone is welcome to either service:

#### Messy Church for All is back!

Messy Church for All restarts on Tues 20th Sept at 3.30pm at Oakley Methodist Church and then continues every 3rd Tuesday

Our other Messy Church sessions will also start again as the school term begins in Sept

St Owen's Bromham starts Mon 5th Sept 11.30am—1.30pm (incl lunch)

St Mary's Oakley starts Thurs 8th Sept 10- 11.45am (incl snack)

St Owen's Bromham Sun 2nd Oct

St Mary's Oakley Sun 23rd Oct (Joint with Oakley Methodist Church)

both at 3pm and followed by refreshments.

If you would like the name of a loved one remembered please call Rev Catherine or one of the church wardens.



### CONTACTS

St Mary's Oakley (C of E): Rev Catherine Wilson 01234 825665 vicar@bromhambenefice.org

Church Wardens: Hilarie Worley 262166 & Graham Palmer 07710 462535

Administrator: Sarah Smale administrator@bromhambenefice.org Website: www.bromhambenefice.org

Oakley Methodist Church: Rev Chris Sandy 01234 860484 christopher.sandy@methodist.org.uk

Church Steward: Jeanette Letch 825204



## BedsRCC launches

### You Can Do IT! Project

In today's society, technology has transformed our lives, and many of us could no longer imagine living without it. Although those digitally-skilled take these changes in their stride, it is clear that those who are used to more physical forms of life such as paper forms, face-to-face meetings, and physical photographs can struggle to adapt.

At Bedsrcc we recognised the need to provide a service to people who need help using digital technology. In February this year, we launched our You Can Do IT! project. You Can Do IT! is a digital inclusion project which improves people's lives by getting them online and accessing services and systems that will improve their health and wellbeing. During the sessions, participants are shown how to use their smartphones, tablets, or laptops to carry out tasks such as joining an online activity group, shopping, making video calls to friends and family, and more.

*Aside from learning how to book a GP appointment online or re-order medication using an app, the smaller things often feel the most heart-warming and rewarding. From helping a grandmother to see her grandchildren abroad via a video call, or from scanning utility bills with a tablet so they can be read aloud, or discovering music online, these things can help improve someone's sense of health and wellbeing too.*

*You Can Do IT's groups often turn frowns into smiles or even laughter, I think everyone in any position in our groups benefits from being part of it.* Bill Simmons, Digital Lead

Not only does the YCDIT! project benefit those who attend the sessions as participants, they also help give purpose to the Digital Health Champions, who without, the sessions couldn't happen.

*After taking early retirement I was looking for something that would enable me to use my professional skills in a way that could help the wider community.*

*Getting involved with the project has been immensely beneficial as it has given me a much needed sense of purpose, brought me into a very positive environment and given me the opportunity to meet a wide range of very friendly people.*

Jonathan Jones, Volunteer Digital Health Champion

We now have four groups running in Biggleswade, Putnoe, Dunstable and Houghton Regis. Over the next two years, new groups will be added across Bedfordshire. Visit [www.ywb.org.uk/IT](http://www.ywb.org.uk/IT) to find out more.

**Do you need help with your smartphone, tablet, or computer? Join a local You Can Do IT! Group and receive practical help with smartphones, tablets and computers from our lovely volunteers.**

**Or, could you become a volunteer Digital Health Champion to teach people digital skills to support their health and wellbeing?**

**For more information, email [YouCanDoIT@bedsrcc.org.uk](mailto:YouCanDoIT@bedsrcc.org.uk) or phone 01234 838771.**

# You can Do IT!

## Bedfordshire Rural Communities Charity



Your  
Wellbeing  
Bedfordshire



# Girlguiding in Oakley

Oakley has two guiding units – Rainbows for girls aged 5 -7, and Brownies for girls aged 7-10.

If you would like to enroll your daughter in either of these units or any other units locally, please register your daughter at <https://www.girlguiding.org.uk/information-for-parents/register-your-daughter/>

If you would like more information about the individual units before you register your daughter, you can use the contact details below.



## 1st Oakley Rainbows (Wednesdays)

If you have other enquiries, you can email me at [oakleyclaphamrainbows@outlook.com](mailto:oakleyclaphamrainbows@outlook.com) but if you simply wish to register, please do this through the website.

Unit contact: Amanda Keen (Assistant Leader) [oakleyclaphamrainbows@outlook.com](mailto:oakleyclaphamrainbows@outlook.com)



## 1st Oakley Brownies (Fridays)

Brownies had a busy and fun-packed term and completed the Innovate badge. We were impressed with the Brownies' creative thinking, turning random objects into a variety of props which they used in entertaining sketches. In another badge activity Brownies used foam to create speedy boats which they propelled across a paddling pool using windpower (generated through a straw). After

dancing the macarena and making algorithms of the moves Brownies came up with their own exciting dance moves.

We also had a visit to Mollivers, the Girlguiding site in Bromham. We enjoyed being in the woods and having lots of space, but the weather conditions meant that we were not allowed to light fires as usual. However, we were able to do some archery, scavenger hunts, bark rubbing and make clay faces on trees. We ended our evening eating 'raw' smores – uncooked marshmallows and chocolate digestives and singing some campfire songs sitting on logs.

We had to say goodbye to six older Brownies who are approaching their 11th birthday. We marked the occasion by making mocktails – the Cinderella mocktail made from orange and pineapple juice with slices of orange was particularly popular.

If you have a daughter aged 7-10 and would like to sign up for Brownies, please register on Go

<https://go.girlguiding.org.uk/>

or contact Lindsay for further information by email : [oakleybrownies452@gmail.com](mailto:oakleybrownies452@gmail.com)







## Oakley Village Hall

Church Lane,  
Oakley,  
Bedfordshire, MK43 7RJ

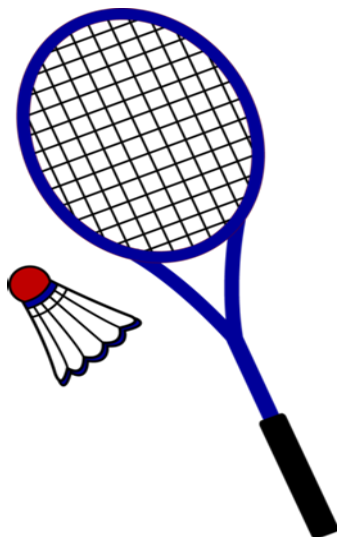
A well-appointed village hall  
Main hall with stage and PA system  
(Main hall is air conditioned)

Separate meeting room with bar

Well equipped kitchen

For information and bookings  
please telephone 07788 796996

## OAKLEY BADMINTON CLUB



**MEET PEOPLE WITHOUT MASKS**

**AND GET FIT !**

**Wednesday 7-8.30pm**

**Sign up now All ages and abilities welcome.**

**Tel. 07557 441206**



INTERIOR ♦ EXTERIOR ♦ DOMESTIC ♦ COMMERCIAL

*Professional & Reliable Local Decorators*

SPECIALISTS IN WALLPAPER HANGING

DUSTLESS SANDING

AIRLESS SPRAYING

EXTENSIVE PORTFOLIO

TESTIMONIALS FROM CLIENTS AVAILABLE

TEL: 01234 824173

MOB: 07743 176201

EMAIL: [info@oakhamdecorators.co.uk](mailto:info@oakhamdecorators.co.uk)

WEBSITE: [www.oakhamdecorators.co.uk](http://www.oakhamdecorators.co.uk)

## NIGEL L. WILLE

PLUMBING & HEATING ENGINEER

GAS SAFE REGISTERED

BOILER REPLACEMENTS

FULL CENTRAL HEATING INSTALLATION

BATHROOM SUITES

RADIATOR REPLACEMENTS

TAP REPLACEMENTS

ALL DOMESTIC PLUMBING, HEATING WORK  
AND REPAIRS UNDERTAKEN

FOR A FRIENDLY SERVICE  
PLEASE CALL NIGEL

Tel: 01234 822962

Mobile: 07778 800595

Email: [nigel.wille@sky.com](mailto:nigel.wille@sky.com)



**Saturday 17th September, 7.30pm**

**Don't miss**

**FYNNIUS FOGG!**

the legendary local cover band, performing hits on the main stage from the last 50 years!

*Licensed bar*

This is a fundraising event for Sharnbrook Mill Theatre. The band performs without charge in support of good causes.



**BOOK NOW! Reserved seats £12 (+ £1 booking fee)**

**Wednesday 5<sup>th</sup> – Friday 7<sup>th</sup> October, 7.30pm**  
**THE WOMAN WHO COOKED HER HUSBAND**

A highly entertaining comedy by Debbie Isitt

Kenneth and Hilary have been married nearly twenty years, but as middle age approaches, Kenneth finds himself in the arms of another woman.

At first, Laura appears to be everything that is missing from Ken's life with Hilary - young, slim, attractive and a vibrant free spirit - but his little fling quickly becomes desperately out of hand...

**THIS PLAY IS SUITABLE FOR ADULTS ONLY**

This amateur production is presented by arrangement with Josef Weinberger Ltd

**Tickets £13 (+£1 booking fee)**



Due to unforeseen circumstances, we have regretfully decided to cancel the production of REWIRED due to take place in October.

**Special Showing of**  
**Royal Papworth Hospital's Centenary Film**  
**'PAPWORTH - A MOVING STORY, before AFTERNOON TEA**  
**Sunday 23<sup>rd</sup> October 3.15pm for 3.30pm**

The history, development & recent relocation to The Cambridge Biomedical Campus of the UK's leading cardiothoracic centre.

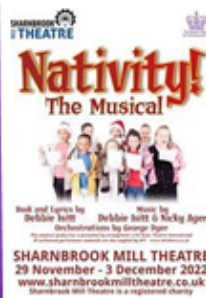
Introduction by Ian Burton, B.Sc; C.Biol; MRSB; PGCE

**TICKETS £13.50, INCLUDING AFTERNOON TEA, FROM THEO GIBBS**

(01234) 782377 or twhg1@outlook.com

In memoriam Rachel Roberts

This is a fundraising event for Sharnbrook Mill Theatre



**TUES 29<sup>th</sup> NOVEMBER – SAT 3<sup>RD</sup> DECEMBER**

Every child in every school has one Christmas wish: to star in a Nativity play. The only trouble is that teacher Mr Maddens has promised that a Hollywood producer is coming to town to turn their show into a film!

**BOOK NOW! Charity Night Thursday night, 1st December, for Rotary Club of Rushden Ticket £15 inc. a welcome drink from 6.45pm. Call John Garley 01933 312668**  
Tuesday – Wednesday £14, Friday – Saturday £15 (+ £1 booking fee) Group bookings: 10+ 10% discount. Discount not available Fri/Sat, nor Charity night

**BOOK SHOW TICKETS at Pick-a-Lily, Florists, Sharnbrook (in person), or**

[www.sharnbrookmilltheatre.co.uk](http://www.sharnbrookmilltheatre.co.uk)

# NAO Cattery



**BOOK NOW!**

**07411 136691**

naoservices111@gmail.com

www.naoservices111.weebly.com

Bramble Lodge, 29 Oakley Road, Clapham, Bedford MK41 6AN

Opening Hours: 9.00-11.00 Mon-Sat & 18.00-19.00hrs Mon-Fri  
Sunday and Bank Holidays Closed

\* Note that all boarding cats must be healthy on arrival and fully inoculated against cat flu and contagious enteritis. Terms and Conditions apply, charge includes insurance and vet on call.

# NAO Cleaning

- Regular cleaning (Weekly, Fortnightly, Monthly etc)
- Home Care Cleans
- Spring cleans
- Moving In & out clean
- Builders before and after clean
- Tenancy beginning & end clean

FOR A **FREE ESTIMATE CALL TODAY ON**  
**07411 136691**

Bramble Lodge, 29 Oakley Rd, Clapham, Bedfordshire MK41 6AN  
www.naoservices111.weebly.com  
naoservices111@gmail.com

**We cover all of Bedfordshire**

# RP TESTA

PLUMBING & HEATING SERVICES LIMITED

A professional service with over 25 years experience :

All general plumbing requirements

and full design & installation for:

- ◆ CENTRAL HEATING inc. LPG
- ◆ BATHROOMS inc. tiling etc.
- ◆ UNDERFLOOR HEATING
- ◆ UNVENTED HOT WATER



FOR A LOCAL AND RELIABLE SERVICE CALL

**T: 01234 781827**

[www.testaplumbingandheating.co.uk](http://www.testaplumbingandheating.co.uk)



## R J GASCOYNE

### THE PLUMBING, HEATING AND GAS COMPANY

Boiler changes, system upgrades, bathrooms, fault finding, servicing, maintenance, gas safety & landlord certificates, repairs, all heating, plumbing, drainage and gas work undertaken.

All from a friendly, reliable, trustworthy and professional engineer.

Contact Ryan on

TEL: 07980 209587

or EMAIL: [ryangascoynephg@gmail.com](mailto:ryangascoynephg@gmail.com)



## Uncomfortable with letting strange people into your home?

We are an **all-female** team of interior painters and decorators, working in the north beds village area. Fully experienced in hanging wallpaper, painting – including paint effects, restoring and repairing surfaces, wallpaper stripping and all general home decorating. We are all individually CRB checked, will provide references and testimonials showing the standard of our workmanship giving you peace of mind. We will come to your home to discuss your exact requirement, offer advice and produce a free written specification and quotation. We will then arrive on time, keeping disturbance to the minimum and deliver a quality job using only top quality materials.



**OAKLEY ANGELS**  
*The all-female painting and decorating team*

- Trustworthy
- Experienced
- Guaranteed work
- Peace of mind
- High quality work at a reasonable price

Phone: 07989 778345  
or: 01234 822499

# JUST INLINE JUST INLINE WINDOWS

## WINDOWS, DOORS & CONSERVATORIES

EMAIL: [info@just-inlinewindows.co.uk](mailto:info@just-inlinewindows.co.uk)

WEB: [www.just-inlinewindows.co.uk](http://www.just-inlinewindows.co.uk)

TEL: 01234 826740 | 07817 129744



WINDOWS / DOORS / UPVC / ALUMINIUM / BIFOLDS / LANTERNS

Just Inline Windows is a Bedfordshire-based double glazing business specialising in all aspects of glazing installations. We are based in Oakley and cover Bedford, Milton Keynes, Northampton, Luton & surrounding areas. We have a reputation built on high quality services, great value and an exceptional level of customer service and aftercare.



LOTS OF LOCAL RECOMMENDATIONS  
CONTACT US FOR MORE INFORMATION



# CLASSIC CAR MEET

## BEDFORDSHIRE

It has been a very busy summer with two shows a month. Although we anticipated losing some nights to the weather, we have only actually lost one so far and that was due to the parched condition of the OSSC field - not excessive rainfall!

We have also had many vehicles that have not been here



before with some wonderful and exceptionally rare vintage vehicles among the classics. What has been good to see are the number of Oakley residents who have been coming along to our events and bringing their families, we are regularly getting 100-200 people coming in on show Tuesdays. What better way to spend a warm summer evening than food, drink, ice cream and a vast array of amazing cars?



Our last evening of 2022 will be Tuesday 13th September, we hope to see you there.

Luke  
Beds Classic  
Car Meet Crew



### From Snacks to Meals!

Cakes to die for  
Best coffee in the neighbourhood  
Milkshakes, tea, soft drinks  
Open SEVEN Days!  
Friendly staff, good service



## for Coffee

### Oakley's Coffee Shop!

Phone 824113- [info@o-for-coffee.co.uk](mailto:info@o-for-coffee.co.uk)  
<http://www.o-for-coffee.co.uk>  
Oakley Park (Unit 1), Station Road, Oakley!



## Tudor Rose Patchwork

### Oakley's Sewing and Threadcraft Shop

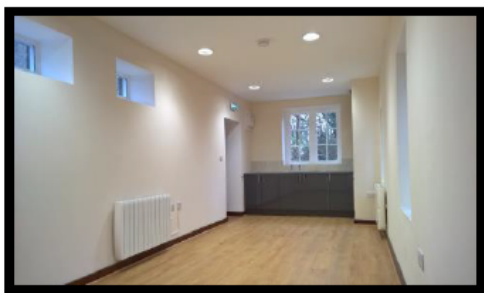
Phone 824983 - [info@tudorrosepatchwork.co.uk](mailto:info@tudorrosepatchwork.co.uk)  
<http://www.tudorrosepatchwork.co.uk>  
Oakley Park (Unit 1), Station Road, Oakley!

We're friendly and very helpful!  
We run all kinds of workshops and clubs!  
We have a great selection of knitting yarns  
We have a huge range of cotton fabrics  
as well as other types of fabric

# HIRE THE OLD SCHOOL

Lovell Road, MK43 7RX,  
Reg. Charity No. 1119074

- *Hall available for regular and one-off bookings at weekends*
- *Meeting Room available for regular and one-off bookings weekdays and weekends*
- *Meeting room now with self-contained facilities*



Please contact :

Bill Sellars 07980 745292

Email: [billsellars@theoldschooloakley.org.uk](mailto:billsellars@theoldschooloakley.org.uk)

Web : [www.theoldschooloakley.org.uk](http://www.theoldschooloakley.org.uk)



## OAKLEY GARDENING CLUB

Please keep an eye  
on the village noticeboards  
for further information.

For further  
information contact  
Denise Hookham  
on 01933 312119



For all Pre-School Children

At St Mary's Church Oakley on

Thursdays during School Term 10am to 11.45

Crafts, Painting, Play, Music, Stories and a  
Healthy Snack plus tea/coffee for the adults

More detail from Dorothy Palmer at  
01234 823959



## SYDNEY HOWARD LOVELL MEMORIAL ALMHOUSES AT OAKLEY

The Lovell Homes is a small independent living  
community comprising two bedroomed bungalows  
and one/two bedroomed flats

Applicants over the age of 60 are invited to  
apply to go on the register of interest for a  
property - priority will be given to those with  
an agricultural or related background.

If you would like to be considered please visit  
the website [www.lovellhomesoakley.co.uk](http://www.lovellhomesoakley.co.uk)

Or contact the Clerk :

Mandy Newton

On 07736 466965

Registered Charity Number : 200480



# oakley *Motorcycle* club

It has been a summer of mixed emotions for OMC. Sadly in July Rod Atkins, of High Street, Oakley, passed away. Rod was known and loved by many people both locally and in OMC. Rod was one of the founder members who met on a cold damp Thursday night on 29th January 2005 along with 17 other like minded bikers when



OMC was founded. He is sorely missed.

On a happier note over the summer many of our sponsors have attended the club with an array of the latest machines on offer. They include St Neots Motorcycles (Suzuki), Flitwick Motorcycles (Yamaha), Grafton Honda Milton Keynes (Honda), Motorrad BMW Wollaston (BMW) and KTM Hemel Hempstead (KTM).



On 7th July we held our hugely popular annual American theme night which saw a huge number of motorcyclists attend together with a large array of American Classic, Hot Rod and Custom cars organised by Dave and Lesley Brown. Providing the outside entertainment for the early evening, and back by popular demand, were The Blues Brothers who also had another job picking out which American car and motorcycle they thought were the best examples. The winners of each category they presented with a £100 OSSC food and drinks voucher.

The annual OMC Bike of the Year Award took place on Thursday 21st July. This event has not been held since 2019 when it was won by Peter Shrubbs from Cranfield with his 1959 Norton Triton. We had 29 bikes entering the competition. Our judges for the event were TV presenter and



legendary bike builder Guy Willison. Guy appears in the TV shows Find it, Fix It, Flog It, The Bike Show, Shed and Buried and is currently filming another series of Junk and Disorderly. Also judging was TV presenter Sean Rose who is a GB Paralympian and regularly appears as a presenter, pundit and commentator on Channel 4 during their coverage of the Paralympics. Beside these were OMC legend Dickie Galka and our very own Treasurer and Vice Chair Derek Brown.

It was a difficult decision to make due to the diversity of fantastic machines entered but the winner was Brian McGregor of Bedford with his 1975 Kawasaki H2C 750. Brian picks up the Bike of the Year Shield together with a £200 voucher for OSSC.



Second place went to Mick Thompson of Honeydon with his rebuilt 1967 Rickman Triumph Metisse who collected a £125 OSSC voucher. Third place went to Andy Morgan of Pavenham with his 1967 Honda CL450 who collected a £75 OSSC voucher.

Many thanks to our four judges particularly Guy and Sean who are very busy in their professional capacity and took the time out to come and judge on the evening. OMC will donate £100 to the East Anglian Air Ambulance as a thank you to them.

Roger "Baysie" Bays Chair - OMC





# Oakley Sports & Social Club

## Family & Sports Bar

# MAIN MENU

### KITCHEN OPENING TIMES

THURSDAY (SEE THURS MENU) FRIDAY: 5PM - 8PM SATURDAY: 12PM - 8PM

#### PIZZA

Margherita **£8.95 (V)**  
*Tomato Sauce, Mozzarella*

Pepperoni **£9.95**  
*Mozzarella, Pepperoni*

Spicy Meat Feast **£10.95**  
*Spicy Nduja, Ham, Pepperoni, Jalapenos*

BBQ Chicken **£9.95**  
*BBQ Chicken, Smoked Bacon, Red Onions*

Veggie **£8.95 (V)**  
*Mixed Peppers, Red Onions, Mushrooms*

#### BEST OF THE REST

BBQ Baby Ribs, Chunky Chips,  
Onion Rings **£10.95**

Scampi, Chips, Peas &  
Tartare Sauce **£9.95**

Ham Double Egg &  
Chips **£9.95**

Warm Vegan Falafel Salad **£6.00 (VG)**  
*Mixed salad topped with falafel & sweet chilli dressing*

#### BURGERS

*Served in a brioche bun with salad and chunky chips*

Beef, Burger Relish **£8.95**

Crispy Chicken, Mayo **£9.95**

Oriental Veggie, Sriracha Mayo **£8.95 (V)**

## Fish & Chips

- EVERY FRIDAY -

Traditional Fish & Chips **£11.95**

Battered Calamari & Fries **£8.95**

Salt n' Pepper Squid & Fries **£9.95**

Double Fishcacke & Chips **£9.95**

Kid's Fishcacke & Fries **£4.95**

Kid's Fish Fingers & Fries **£4.95**

Chip Shop Curry Sauce **+50p**

Sweet & Sour Sauce **+50p**

#### ON THE SIDE

Chunky Chips **£2**

Sweet Potato Fries **£2.50**

Cheesy Chips **£2.50**

Onions Rings **£1.50**

Fiery Chicken Wings & Blue Cheese Dip **£4.50**

Halloumi Fries & Sweet Chilli Dip **£3.50**

Kids  
Meal Deal  
**£4**  
When purchased on  
Saturday between  
12pm - 2:30pm  
under 12's

#### KIDS MENU - £4.95

Chicken Nuggets & Chunky Chips

Fish Fingers & Chunky Chips

Sausages & Chunky Chips

All with peas or baked beans