



Oakley Newsletter



Autumn 2023

Number 96

Look inside for

Oakley Show Date	Planning Updates	Crime Prevention
Litter Pick Date	Oakley Directory	OYC Treasurer Needed
Budding Historian?	More Down Memory Lanes	Cameo Blankets



Front Page Picture : Autumn
Photographer - David Exon

The Oakley Newsletter

is published quarterly by Oakley Parish Council and delivered by parish councillors free to every house in Oakley – about 1,000 copies.

Opinions and information

in the Newsletter, both text and adverts, may not be endorsed by the Editor or the Parish Council.

Next issue

Final copy date for the Winter issue is 24th Nov 2023
The publishing date is 1st Dec 2023

Advertising rates

Colour Advertisements
Quarter page: £30
Half page: £60
Whole page: £120
Four consecutive quarter page adverts - discount 10%
Black & white advert rates are available upon request.
Loose inserts, any size up to A4: £100
Invoices will be issued by Ann Paice, with payment to Oakley Parish Council.

Editor

Bill Chalker
13 Bevery Close
Oakley
MK43 7SH
07789 997733
wrecklatch@gmail.com



Printers

White Hart Press
58a York Street
Bedford MK40 3RL



Hello Children

look out for
Ten more
little ones



Parish Council News

Autumn 2023

Welcome to the late summer into autumn edition of the Oakley Newsletter - "The Oracle" as my husband calls it. It is a really good publication setting out what goes on in this lovely village of ours. Whilst I am on this theme, I will just give a big thank you to Bill Chalker who volunteers to produce this great publication. Thanks Bill - it is a good and informative read, with something for everyone.

The Parish Council has been getting into our stride. We take on different responsibilities and sit on different committees in addition to our Parish Council commitments and I think it is worth setting these out for you.

Finance Advisory Group: Chair, J Abbott, J Walker, R Worker

Planning Advisory Group: C Bays, P Jones, P Olney, R Saunders, J Walker

NDP Group: P Olney, J Walker, R Worker

Allotment Group: P Olney. Former Cllr. Nicholas to continue as Allotment Manager.

Speed Watch Group: R Worker. Former Cllr. Phillips would continue as co-ordinator

Village Roads Co-ordinator: P White, J Abbott

Footpath & Waste Bins: P Jones

Oakley Directory: C Worker

Oakley Recreational Association: P Jones, T Saunders, R Worker

Village Hall: P White

Oakley Carnival Committee: C Bays, C Worker

Education Charity Trust: J Walker (Reserve R Worker)

The Villager Community Minibus: C Worker

Tree Warden: R Saunders

Oakley Rural Day Care Centre: P Olney

Youth Club: S Fardon

OAKLEY PARISH COUNCIL

PARISH CLERK

Ann Paice
31 Radwell Road
Milton Ernest
Bedford, MK44 1SH.
07873 887370
parishclerk@oakleyvillage.co.uk

CHAIR

Sara Fardon
61 Lincroft.
824516
sarafardonopc@gmail.com

VICE-CHAIR

Robert Saunders
College Farm.
07770 232469
rjsaunders5591@gmail.com

Jane Walker

(Parish and Borough councillor)
11 Dewlands
07952 879587
jane@janewalker.co.uk

Jonathan Abbott

(Parish and Borough councillor)
13 The Furlong
950868
jonathan.abbott71@icloud.com

Pat Olney

33 Station Road.
824384
pat.olney@btopenworld.com

Phyllis Jones

35 Ruffs Furze 910187
phylmaj@gmail.com

Paul White

20 Reynes Drive. 825472
paulwhite20rd@gmail.com

Carla Bays

43 Reynes Drive
07786 363770
carla.millar@hotmail.co.uk

Richard Worker

Oak Lodge Church Lane
826111
richworker@hotmail.co.uk

Thomas Saunders

Oakland House Westfield
Road 07902 146751
tsaunders678@outlook.com

Caroline Worker

3 Parsonage Close
07765 077114
caroline.worker@outlook.com

Continued on page 3

You may be interested to find out more and lend support yourself as success comes from a good mix of villagers and councillors! Please do get in contact if anything grabs your attention.

Development within Oakley

I think it rather prudent to keep you apprised on the planning and activity surrounding the spaces on Station Road and the plot on the High Street. Both of these plots were agreed under the Oakley Neighbourhood Development Plan (NDP) (and voted on by villagers) as areas for new housing. These also ensure Oakley meets with the requirements under the Bedford Borough Local Plan 2030.

The site on Station Road has now been to an appeal after originally being refused permission by Bedford Borough planners. The inspector has this week (24th July) allowed the appeal thus granting outline planning permission for the site. This was for an outline application (all matters reserved other than access) for the development of up to 40 dwellings, vehicular and pedestrian access, green infrastructure including open space and landscaping and related drainage and other infrastructure works on land off Station Road, Oakley. We gave our views to the Inspector, along with a resident who also attended. We agreed that the land is the site the village had chosen for our allocation of houses, however, we feel that under the NDP the wording of allowing around 30 dwellings is not the same as a development of up to 40 dwellings.

The NDP group will now be reviewing the comments made by the inspector which will help us give consideration to plans received in due course for the site development. If you would like to read what the inspector has said then the report is available on Bedford Borough Council website under planning.

[Editor :- Not sure if this helps but here is the link - type in with no gaps <https://edrms.bedford.gov.uk/PlanningBrowse.aspx?id=pZ2YqrfhbViSOZSy5mHg8w%3d%3d>]

Meanwhile we have again, this week, had contact from developers interested in the site on the High Street that was identified under the NDP. They will be communicating their thoughts to nearby residents at the end of July and have asked to meet with us, as a Parish Council to share their ideal plans. Meeting with the developers does not confer any degree of acceptance or agreement to the plans, and we feel it is important to meet to understand what they would ideally like to achieve. We will be doing so along with our volunteers on the NDP group as soon as a suitable date is arranged

Oakley Recreational Association

In the Spring edition of the newsletter you were able to read about the tennis court at the ORA ground. The ORA has repurposed the court and the Parish Council were rather concerned about it



at the time - feeling that this was a great asset to the village and consequently a loss of amenity. Representatives from the Parish Council met with the ORA on 1 June to reset our collective understanding of the remit of both the ORA and ourselves as a Parish Council.

It is worth setting out here so villagers also have the same clarity.

The Parish Council and the ORA are joint leaseholders on the land that the Association occupies. The Parish Council pays the rent for the land. This ensures that if for any reason anything happens to the ORA then there is time in hand for any new arrangement to be put into place. Under the rules of the Charity Commission, the Parish Council cannot have ANY involvement in the running of the ORA. That is for the ORA and Oakley Sports and Social Club (OSSC) to do and they must take the decisions that are in their best interests. Consequently, it is for them to decide which amenities to provide based on usage, income, available resources etc.

Continued on Page 4

Parish Clerk's Working Hours

The Parish Clerk is currently working from home Monday, Tuesday and Wednesday mornings. She is also in the Old School Meeting Room (at the rear of the building) on Thursdays between 10.00am and 2.00pm if anyone wishes to visit in person. She does not work on Fridays but any messages or emails will be picked up on Monday.

Oakley Recreational Association - Continued

To that end, whilst we were concerned as a Parish Council, we totally accept that the decision regarding the tennis court, and any others relating to amenities provided is for the ORA/OSSC to make.

Reviewing and refreshing our engagement with the ORA has been most helpful in resetting the boundaries for all parties. The Parish Councillors who liaise with the ORA, noted at the beginning of the newsletter, joined the recent bi monthly ORA meeting which was held on 18th July, along with other interested groups. A report will be given to the Parish Council at the forthcoming meeting on the 5th September and recorded in the minutes accordingly.

What did emerge through our discussion was that there are events taking place both on the recreational field and in the social club which are accessible to the broader community. These are over and above specific member events and really help to demonstrate the importance of the ORA to the village.

Finally, if any residents have queries, suggestions or comments requiring responses from the ORA or OSSC then they have requested that they should initially be raised directly with them. Only if a satisfactory agreement between the resident and the ORA could not be met should the matter be escalated to the Parish Council or other appropriate body.

Parking

I feel I could write several pages on inconsiderate parking in the village and I do not want to do this. Parking is a modern day challenge for us all. We have asked the Borough to refresh the yellow lines in the area by the Post Office which they have done. However, we do not want the village painted yellow and so the best thing to do is to ask you to consider your own responsibility to other users - pedestrians and road users alike when you are parking your vehicle. If you are trying to walk along the pavement and your route is blocked by a vehicle then please take a photo and send to our Parish Clerk. We will send to the police and they will talk to the driver about the impact of such parking.

Litter - would you like to be a volunteer picker?

A resident wrote to me to let me know that any villager can contact the Environmental Services Officer at the Borough Council, who can provide equipment for litter picking free of charge and delivered to your door. The Officer is June Laban (Events and Infrastructure Officer) and she can

be reached at the following email address - volunteering@bedford.gov.uk.

You will be provided with a hoop, bag, picker, high viz jacket. If this is of interest to you then please make contact.

She also asks that individuals register as volunteers and then asks every month for a rough estimate of time spent volunteering and the number of bags collected.

The Parish Council does employ a litter picker, but all contributions to picking up litter are very welcome - or even better - let us not drop it in the first place!

A couple of dates for your diary



The Oakley Show is taking place on the **10th September** and is a great opportunity to promote a wide range of skills and talent from across the village. Do not hesitate to make and create, enter the relevant classes and to share and show off your produce, cakes, jams, photographs, chutneys, bakes, arts and crafts!

Christmas Tree Lights

Finally, it is still rather early to be mentioning the "C" word but maybe I could ask you to reserve

2nd December as a date in your diary for the **switching on of lights**, community singing and some seasonal fare.



Full details to be published nearer the time.

Finally, residents are always welcome to come and observe Parish Council meetings, or to speak at the open session if you wish to bring something to our attention.

Thank you

Sara Fardon, Chair

Our Services

Hair

Balayage
Wella Colour Experts
Restyle
Wash, Cut & Blow Dry
Children's Hair Cuts
Fabulous range of Stylists available
from recent graduate to Manager

Hair Extensions

Beauty Works Hair Extensions

Barbers

Wash, Cut & Finish
Gents Skin Fade

Beauty

Skincare Specialists
Luxury Facials
Make Up Artists
Gels, Manicure & Pedicure
Waxing
Lashes & Eyebrows
LVL Lashes
Relaxing Massage
Reflexology
Tanning
Ear Piercing
Pamper Days

Weddings

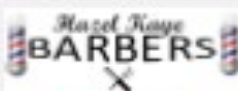
Make Up, incl Bridal
Hair Ups

Facial Aesthetics

Regular Private Clinics Held



HAZEL KAYE HAIR,
BEAUTY & FACIAL
AESTHETICS



Hazel Kaye Celebrating 30 Years Voted No. 1 Salon in the UK

Exceptional savings

on luxury Hair & Beauty brands. Premium
fragrances including Savile Row Men's Fragrance &
Grooming, Seksy, Maison Charel & Jane Packer, all
designed at Hazel Kaye.

Gift Vouchers - the perfect gift for those
special occasions

Spacious salon with free parking

Book Appointments/Shop Online

40 High Street, Oakley, Beds, MK43 7RG
Tel:01234 826502,e:hazel@hazelkaye.com
www.hazelkaye.com





BURGLARY DWELLING

It always pays to review your home security regularly. Apart from reducing the risk of crime, many insurance companies offer a discount to houses with alarms and good-quality locks. Being a member of a 'Watch' group can also help.

External doors and windows

- Locks are only effective if the door or window is in good condition. Also, ensure the frame is firmly fixed to the wall.
- Mortice locks are the best type of lock for an external wooden door. Choose a 5-lever mortice lock that conforms to BS3621 or EN12209. The door should be a minimum of 44mm thick to accommodate the lock. Speak to a qualified locksmith for further advice.
- If you have a composite door with a multi-point locking mechanism, check it conforms to PAS24. Always lift the



handle and turn the key to ensure the door is properly locked.

- Patio doors can be protected by fitting purpose-made locks or a security bar.
- French windows can be made more secure by fitting additional bolts that go into the top and bottom of the frame, so that they are attached to the house and not just to each other.
- Locking window handles can be retro-fitted to most double glazed units – they must comply with BS7950.
- Double glazing should comply with BS7950 (security performance) and BS7412 (window performance).

Burglar alarms and domestic CCTV

- There are many types of alarm and CCTV systems, from wired and monitored systems at the top of the range down to battery-operated wire-free units. Consider which is the most suitable for your needs, the property you wish to protect and your budget.
- Please bear in mind that, although wire-free systems are an effective deterrent, most insurance companies do not recognise these systems so will not acknowledge them on your policy specification.
- To find a reputable alarm and CCTV fitter, contact your local Trading Standards Office and ask about their 'Approved Trader Scheme'. Alternatively, you can search for a fitter on the National Security Inspectorate website: www.nsi.org.uk

- Don't rely on a dog to protect your house. They may act as a deterrent but they should not stop you from investing in a burglar alarm. There are pet-friendly systems on the market.
- Consider fitting a system that allows you to set the alarm for particular zones in your home overnight.
- Ensure that the alarm conforms to either BS4737 (for systems fitted before 2005) or PD6662 (systems fitted from 2005).
- CCTV systems should conform to BS8418.

Safes

- Don't buy a cheap safe. The rule of thumb is to calculate the value of the contents and buy a safe with the nearest cash rating. At the very least, look for one with a minimum of a £2,000 cash rating and Secured By Design accreditation.

House and car keys

- Don't leave your various house keys on display and avoid labelling them with the door they fit.
- Ensure your external doors and windows are locked when you leave the house and overnight.
- Close, but do not lock, internal doors as a fire safety measure.
- Ensure you have a set of house keys by your bedside so that you can leave the house quickly at night in an emergency.
- Avoid leaving car keys visible and near the front door – some car thefts are committed by 'fishing' the keys out through the letterbox.

Property marking

- Property marking cannot prevent your goods from being stolen but is a very good deterrent as it is difficult to sell on items that have been marked. It also allows police to return recovered items to their rightful owner and can help to build a prosecution.
- There are many marking methods on the market – the simplest to use is a UV pen.

Further advice on British Standards can be found at: securedbydesign.com



VEHICLE CRIME

WHEELS

Alloy wheels are always attractive to a thief because of their high value. You can secure your wheels by using locking wheel nuts. Locking wheel nuts will also prevent the theft of 'run-on-flat' tyres. Cable ties won't prevent your wheel trims from being stolen but they are a good deterrent because they will slow an offender down.

INDEX PLATES

Index plates are often stolen to 'disguise' another vehicle in the execution of a crime. You can secure your plates by removing the original screws



and replacing them with clutch-head screws. These are screws that can only be turned clockwise and you need a drill to remove them. Stick-on plates are never a good idea – they can be removed quickly and quietly. Visit www.secureplate.com for details on tamper-proof index plates. Many garages offer to fit anti-theft plates: please check the product is dvla-approved and bears the 'Sold Secure' logo. Many non-tested products are proving not to work effectively.

LOCKS

If you have a steering wheel lock, then use it. There are many types on the

market; the most popular are the 'thread through' style and the steering wheel shields. Make sure any product bought has the 'Sold Secure' brand of approval. You can also buy locking wheel clamps – these are especially useful if the vehicle is to be left unattended for a long period (eg, while you are on holiday).

There are now a number of strong boxes that have been designed to fit into the boot of a car or the back of a van. These are particularly useful if you need to transport tools or expensive items as part of your work. If you need to transport tools and equipment as part of your job, empty your vehicle every evening. It is also worth having a sign in your vehicle that states no tools are left in it overnight.

PROPERTY MARKING

Property marking cannot prevent your goods from being stolen but it is a very good deterrent as it is difficult to sell on stolen property that has been marked. It also allows the police to return recovered stolen goods to their rightful owner. Mark your property with your house/flat number and postcode. If your property has a name, use the first 3 letters instead of the house number. Use a UV pen to invisibly mark items such as mobile phones, audio-visual equipment, cameras, etc. Other products on the market are SmartWater and microdot tagging systems. Consider etching your windows and alloy wheels.

ALARMS

Most new cars are fitted with an alarm and immobiliser as standard. However, it is possible to install a higher specification alarm if necessary. These alarms can also be installed in caravans. Please check the alarm you buy has the 'Sold Secure' seal of approval.

STEREOS

If you can remove the fascia of your stereo, do so. This is the best way to make your stereo undesirable. You can also secure your stereo by replacing the fixing screws with small gauge clutch-head screws. It makes sense to properly mark your stereo and other in-car gadgets, too.

SATELLITE NAVIGATION AND OTHER GPS BASED DEVICES

Some vehicles now have integrated satellite navigation systems but many people buy the stand-alone units that fit to the window on cradle with a plastic sucker pad. If you use one of these items, it is essential you not only remove the device but also the cradle and wipe the sucker ring mark off the glass. Thieves will be looking for tell-tale signs of in-car gadgets as they are small enough to pocket and fetch a good price. Remember to check your insurance details – some home contents policies do not cover satellite navigation systems as they are classed as 'vehicle accessories'.

YOUR CAR KEYS

Sometimes houses are burgled specifically to get the keys to a desirable vehicle parked on the drive. When at home, keep your keys out of the line of vision from doors, letter boxes and windows. Don't store them in an obvious place, like a drawer in the hallway table or kitchen, or a hook on the back of the door.

PRIVATE PARKING

If you have a garage, clear it out and park the car in it – this will help prevent your car being specifically targeted if it is a desirable make and model. If you own a motorcycle, consider installing a ground anchor and use a sturdy chain and padlock. You can reinforce the security of the garage door by fitting a 'garage defender' – this prevents the up-and-over door from being raised. Garage windows can be obscured with frosted adhesive vinyl – if a burglar can't see in, it reduces the temptation to break in. If you can park on a driveway, consider fitting a fold-down or telescopic post. If you own a caravan or trailer, consider installing a hitchlock and post.

Make sure the area where you park your car is well-lit. If the parking area is on private property, you can use a domestic CCTV system.

Always empty your vehicle of property and remove the stereo fascia when you park up outside your home.

PUBLIC CAR PARKS

Many multi-storey car parks now have 'Park Mark' status. This means they have been built or refurbished with crime reduction in mind. They will have signage displaying their status at the entrances. However, it is always sensible to remove temptation and clear your vehicle when you park.

CATALYTIC CONVERTERS

Chemical etching kits are now available on the market to security mark your catalytic converter, and you can also use an electric etching tool. Whilst Bedfordshire Police cannot promote or endorse any particular product or service, we do have an obligation to make the public aware of emerging crime reduction measures.

For more crime reduction advice, please email
crimereduction@bedfordshire.pnn.police.uk

Borough Council News

East West Rail (EWR)

Earlier this year the Government announced its decision on the proposed route for EWR which the Mayor and Council are now reviewing the details of, to better understand the implications of the proposals for the people of Bedford Borough.

In order to explain the council's position on the EWR announcement Mayor Tom Wootton is arranging meetings over the next few months. These meetings are to let residents know what the council is doing about EWR and for Mayor Tom and councillors to listen to residents' opinions. It is not a protest meeting and no-one from EWR will be there, but council officers will be and they will give residents as much information as they have.

The closest meeting to Oakley will be in Clapham. The date will be the evening of 12th October with the venue to be advised. Please look out on Social media and noticeboards for more information.

Fusion

The Fusion contract for the Leisure sites in Bedford Borough, is coming to an end in January 2024. These sites are: Robinson Pool, Kempston Pool, Oasis, The Athletic stadium, Mowsbury Park golf course, The Bunyan Centre, The Kempston



Outdoor Centre and Blue Peris in Wales.

Over the period of this contract there has been a lot of dissatisfaction with the way that Fusion

has run the sites on behalf of the council so they have not been asked to extend the contract. Officers and councillors are currently putting together a tender which will go out to interested operators in September. Unfortunately, because of the tight timescale, there will not be time to consult with residents over the details of what is provided, however the intention is that initially this contract will be for two years and all centres will remain open for the time being. The contract will be awarded in November for a beginning of February start.

Local Plan 2040 hearings

The hearing sessions of the Examination of the Bedford Local Plan continue in the autumn and are open to everyone to come and observe, although you will need to have written in to the Inspector beforehand if you wish to speak.

The hearing sessions will take place:

Block 2 hearing sessions

Week 3: Monday 11 September to Friday 15 September.

Week 4: Monday 18 September to Friday 22 September.

Free parking in Bedford Town centre

Bedford Borough Council has launched a trial scheme to support local businesses in Bedford Town Centre by offering up to four hours of free parking at Allhallows car park.



Shoppers visiting Allhallows car park can enjoy up to four hours of free parking starting from Tuesday 1 August 2023, until Thursday 1 February 2024.

The new Administration, led by Mayor Tom, are committed to working on a range of innovative projects around the Town Centre which will support local businesses to thrive and prosper. This trial will be monitored to see how it influences shopper behaviour and results will be used to influence future parking policies. It is the first initiative being trailed along with other ideas which will be introduced to attract more residents into the Town centre.

If you need any further information or assistance with issues at the council, you can contact us on

Jane Walker

Email: jane@janewalker.co.uk

07952 879587

Facebook: Cllr Jane Walker

Jon Abbott

Email: jonathan.abbott71@icloud.com

07784 549180

Facebook: Clapham & Oakley Liberal Democrats



HARVEST SERVICES

Our Joint Harvest Festival service is on Sunday 1st October at 10.30am in Oakley Methodist Church, followed by a bring and share lunch. This is always a joyful event and all are welcome to give thanks for God's goodness to us. Donations of cash or non perishable food for the Foodbank welcome.



REMEMBRANCE SUNDAY

This year Remembrance Sunday falls on 12th November. There will be services in both churches at 9.45am St Marys and 10am Oakley Methodist Church, followed by a joint Act of Remembrance at the village War Memorial at 10.50am.



Messy Church for All restarts on Tues 19th Sept at 3.30pm at Oakley Methodist Church continuing 17th Oct, 14th Nov & 12th Dec

Our other Messy Church sessions will also start again as the school term begins in Sept

St Owen's Bromham starts Mon 4th Sept 11.30am-1.30pm (incl lunch)

St Mary's Oakley starts Thurs 7th Sept 10- 11.45am (incl snack)

**Coffee Stop
Every Thurs 10.30am- 12 noon at Oakley Methodist Church. All welcome!**

SERVICE OF REMEMBERING

During October we will be holding three 'Remembering Services' to remember and give thanks for loved ones who have died. Everyone is welcome to any service:
St Leonard's Stagsden Sun 1st Oct

St Mary's Oakley Sun 8th Oct (Joint with Oakley Methodist Church)
St Owen's Bromham Sun 29th Oct
all at 3pm and followed by refreshments.
If you would like the name of a loved one remembered please call Graham or Hilarie.

Got questions about faith?

Ask at Alpha; course at St Owen's this Autumn, see our website for more details.



CONTACTS

St Mary's Oakley (C of E): Rev Catherine Wilson 01234 825665 vicar@bromhambenefice.org
Church Wardens: Hilarie Worley 262166 & Graham Palmer 07710 462535
Administrator: Sarah Smale administrator@bromhambenefice.org Website: www.bromhambenefice.org
Oakley Methodist Church: Rev Chris Sandy 01234 860484 christopher.sandy@methodist.org.uk
Church Steward: Jeanette Letch 825204

JUST INLINE JUST INLINE WINDOWS

WINDOWS, DOORS & CONSERVATORIES

EMAIL: info@just-inlinewindows.co.uk

WEB: www.just-inlinewindows.co.uk

TEL: 01234 826740 | 07817 129744



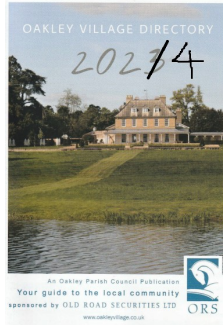
WINDOWS / DOORS / UPVC / ALUMINIUM / BIFOLDS / LANTERNS

Just Inline Windows is a Bedfordshire-based double glazing business specialising in all aspects of glazing installations. We are based in Oakley and cover Bedford, Milton Keynes, Northampton, Luton & surrounding areas. We have a reputation built on high quality services, great value and an exceptional level of customer service and aftercare.



LOTS OF LOCAL RECOMMENDATIONS
CONTACT US FOR MORE INFORMATION

Oakley Village Directory 2024



Do you want your club/society/business to be in the 2024 Oakley Village Directory?

It is **free** to get your details printed, or for a small charge you can advertise.

There is no better way to help local people support you than by telling them you live/work in Oakley!

[The Directory is printed once a year in January](#) and distributed free to all residents in the village.

To be included in the 2024 directory please contact Caroline Worker – oakleyvillagedirectory@gmail.com

WHITE'S Lawnmowers & Garden Machinery

Sales ~ Service ~ Parts ~ Hire
Briggs & Stratton Service Centre

STIHL **STIGA** **AL-KO**



LAWNFLITE **MTD** **Indespension**
...& many more

LARGE SELECTION FOR ALL YOUR GARDENING NEEDS

01234 826066
info@whites-online.co.uk

www.whites-online.co.uk
College Farm, Oakley, Bedford, Bedfordshire, MK43 7RX



JOIN US FOR THE
OAKLEY COMMUNITY
LITTER PICK

16th SEPTEMBER 2023

10.00am – 12.00 noon

MEETING AT THE

OAKLEY SPORTS & SOCIAL CLUB

EVERYONE WELCOME & EQUIPMENT

PROVIDED **FREE BACON ROLLS**

AT THE SPORTS & SOCIAL CLUB FOR THOSE TAKING PART



Oakley Youth Club



needs a new Treasurer

The treasurer is retiring after many years due to work commitments. The Youth club thanks her for her sterling work on behalf of the youth club.

She will handover the accounts and she assures us that is not time consuming.

If you are interested in a treasurers work;

Please contact: OYCsecretarial@gmail.com

Thank you Sara Fardon and Pat Olney



24A Mill Street, Bedford



LIMITED TIME OFFER

UP TO **75% OFF** + UP TO **\$200**
 — 2ND GUEST* — — ONBOARD CREDIT —
 PER ROOM*

Celebrity **X** Cruises®

SAIL BY APRIL 2025 - BOOK BY 3 OCTOBER 2023

Contact Us To Find Out More:
 Tel: 01234 326778
 sales@selecttravelholidays.co.uk

www.selecttravelholidays.co.uk



BOOK WITH CONFIDENCE
 ABTA & ATOL protected



Terms and conditions apply - please enquire



Oakley Educational Foundation

This Foundation exists to assist young people between the ages of 16 and 25, who live in the Parish, with grants towards the cost of books and tools, etc. in furtherance of their education.

Applications are accepted in the months of May and November and must be accompanied by receipts of purchase. Application forms can be obtained from the Clerk, Louise Tunley.

For further information, or for an application form, please contact Louise Tunley on 07917 462213, by post at 19 Goldington Road, Bedford, MK40 3JY or by email at louise_tunley@yahoo.co.uk.

Phantom Sprayer

We are still reading reports on facebook of people being upset and annoyed by dog fouling on High street and other pavements, and certainly, I find it on the alley ways and also in the Sports field, where the children knock around playing football.



So many people are now so diligent at picking up, and on the whole our village is cleaner now, despite there being more lovely dogs, but I do wish those last few people would **just put a bag or two in their pocket to pick up** and make our streets, greens and fields absolutely free of any dog mess.

Seeking enthusiastic historians to investigate the Oakley Village Hall archive

On 28th June 1943 – in the middle of the War - 18 residents of Oakley gathered to form the Oakley Village Hall Building Fund, with the aim of purchasing land ultimately to be used for a Village Hall.

As we know, their tremendous efforts were ultimately successful and our first Hall was built in 1954, on land gifted by the Charles Wells Brewery. When that became unsuitable, the old Hall was replaced by the current one, which opened in 1995.



We have the hand-written minute books from 1943 onwards, and typewritten records from about 1988. These give a fascinating insight into life at that time and into the history of the Hall. For example:

- The first Oakley Fete was held on 2nd August 1943, in 'Newell's field', with refreshments served in the Home Guard hut. There was an entrance fee of 6d per adult and 3d per child. The programmes were numbered as entries to the raffle - the prize was a War Certificate. The accounts of the fete show that a profit of £125-10-8d was made. The decimal currency equivalent of this is £125.53. That profit in today's money would be over £4,000!
- Food was on ration in the UK until 1954, with strict limits to the amount of bacon, ham, sugar, tea, meat, cheese, preserves, butter, margarine, lard and sweets that could be bought. This probably explains why menus for Village Hall fundraising events were the same, time after time, over the years. The most common menus were Fish & Chip suppers, or Sausage & Potato, with apple pie.
- The Water Carnival in September 1949 had a swimming competition in the river!

We know broadly what is in these records, but it would be lovely to have a proper history of Oakley Village Hall.

If you fancy a project (volunteers please) and are interested in getting to grips with our archive, please contact Ruth Bender, r.bender@cranfield.ac.uk for more details.

O A K L E Y		F E T E	
held on August 2nd 1943 in aid of the Building Fund for a new Parish Hall			
Receipts		Expenses	
Mrs Lakin	Guessing Competition	10	6
Mrs Sitwell	Donation	5	0
Mr W PANTER		10	0
Gate		15	10
Programmes	12-10-0		
Less Savings Certs	15 0	11	15
Shooting Competition		2	5
Skittles		9	3
Darts		3	4
Sale of Lavender	Rita Mulatt 4-6		
	Margaret Cater 14-1	18	7
Bran Tub		1	13
Pony Rides		15	11
Miscellaneous Stalls	Mrs Riddy	11	1
	Mrs Newell	3	3
Clock Golf		1	0
Hidden Treasure		3	7
Bagatelle		1	12
Water Bucket		3	2
Fruit & Vegetable Stall	Mr Beard	7	2
Teas	Miss Walker 14-10-10½		
	Mrs Newell 19-0	15	9
Soft Drinks		4	17
Whist Drive		5	1
Competitions per Mrs Mann		21	1
Cycle Park		1	4
Guessing weight of Cake	Mrs Williams		
	15-1		
	Miss Butler 16-4	1	11
Miniature Golf		2	2
Races Auction Sale	teddy Bear 10-6		
	Cake 10-0		
	Cockerel 15-0		
	Cockerel 13-0		
	Lace 2-2-0	4	10
		132	11
		133	3
TO	Printing		
	Beds Times Advert		
	Receipt Book		
	Envelopes		
	Eggs for Races		
	Entrance rickets		
	Extra rickets for		
	Races		
	Entrance-Merch		
	Prizes given		
	Less		
	Prizes return		
	Entrance fees		
	Balance Profit		

A General Meeting of the people of Oakley Parish was held in "The Hut", High St Oakley on Monday June 28th '43 at 8pm.
 Present: Mr. P. Beard, Mr. Mrs Langston, Mr. Wm Cox, Mr. Oldfield, Mr. Basil Saunders, Mr. Mrs Mann, Miss Masson, Miss Butler, Mr. Parrie, Mrs Pine, Mrs Labrum, Mrs Newell, Mr. Mrs Chapman, Mr. Rodgry & Miss Balkin.
 On the proposition of Mr. Parrie, seconded by Mr. Chapman, Mr. Rodgry was unanimously elected Chairman of the meeting.
 Miss Balkin agreed to act as Secretary for this meeting.
 After commenting on the disappointing attendance - only 18 persons being present - the Chairman explained the object of calling the meeting & put forward his suggestions.
 Mr. Oldfield supported Mr. Rodgry, expressing the unanimous feeling of the meeting that the time has ripe for the forming of a fund to purchase

Sales, Lettings & Auctions



MAYFAIR
OFFICE GROUP

move
withUS



Our wealth of **experience**
and **friendly service** makes
us the team you can **trust.**

01234 327744 | sales@laneandholmes.co.uk | laneandholmes.co.uk

Steve's Snippet No.67

Courgettes – the simple to grow seasonal vegetable, often so successful you wonder what on earth to do with them all!

I prefer yellow varieties as they are often slightly firmer. They are often not quite so prolific as green varieties, and, let's face it, they are more interesting in colour.

1. Roasting – this reduces the volume and water content, increasing flavour.

Cut a green and a yellow courgette into slices, at a slant to increase their size and make them a more interesting shape. Spread the slices out on a baking tray, season them in experimental ways, as you like, and roast them for up to 20 minutes at around 190 degrees C, turning at half-time to even-out the roasting. An air-fryer is ideal for this – I have also heard of courgette crisps, but never tried them.

2. Courgette Soup – healthy and delicious, this can be made in larger quantities and frozen – great! (You can now enjoy courgettes in winter too!).

There are many recipes available online for soups using courgettes. Explore! That glut of courgettes can be used for many other recipes, including cakes. However, a soup can be flavoured in many ways and be a healthier alternative to sugar-containing recipes.

Our favourite soup is:- 1 kg courgettes, 1 leek or 1 large onion, 4 cloves of garlic, 2 tbsp vegetable oil, 750 ml vegetable stock, 200 g frozen peas, 20 g fresh basil or 3 tsp dried basil, 50 g cheese, salt and pepper to taste

Simply prepare, oil and roast (40ish mins at 200C) the courgette (1cm slices), leek or onion (chop) with garlic (leave peel on). While the roasting happens make up the stock with boiled water and add the frozen peas.

When the vegetables are roasted to your liking, squeeze the garlic cloves out of their skins and add all of the ingredients together in a blender – blend until smooth. Enjoy immediately or freeze in portion sizes when cooled.



Oakley.IT
maintain .IT
repair .IT
train .IT

Jan Rymarz – Principal IT Technician / Trainer

Fast PC and Laptop Repairs
Clear and Friendly Training
Fast and Efficient Service
Years of experience and services covering everything!

A few recent customer comments

- "Great service"
- "Trustworthy & reliable"
- "Efficient & Affordable"
- "Highly recommended"

100% Satisfaction
Regular Feedback Online

07401 250 118
help@oakleyit.co.uk | www.oakleyit.co.uk



Harrold-Odell Country Park

In July, Harrold-Odell Country Park was awarded **Green Flag status** for 2023/2024 for the 16th year in a row! This is judged to an international standard and means that we meet a wide range of criteria – the park attained overall top marks (over 80 out of 100) which is testament to the hard work and dedication of the volunteers and staff (past and present) that has gone into making it such a wonderful place.

The Friends of Harrold-Odell Country Park were also nominated in the CPRE Living Countryside Awards where they jointly won the 'Keep it Wild' category. The Friends deserve all the recognition they can get as they put in an enormous number of hours of hard work into making the park a special place to visit.

This summer, we have produced a Children's Activities booklet that contains a maze, nature sudoku, word search, colouring in and sheets to do some brass rubbings (which are located in the shelter belt and around the lake). You can now buy this for £1 from the café! Last year, we produced an I Spot booklet (designed to get children all the way around the park) that can also be bought in the café for £1. If you like feeding ducks, we sell grain (small bags 30p found outside and large bags £1 found inside the café) – this is much healthier for the ducks than bread.

Every other Thursday, there are health walks around the park and/or local area. Meeting at 10:30am at the woodland entrance to the Dragonfly Café, they last about 1 hour. The dates are 7th & 21st September, 5th & 19th October, 2nd, 16th & 30th November and 14th & 28th December. More info can be found at <https://hocp.co.uk/get-involved/health-walks/>

In return for a donation, we have a pile of woodchips that are available for collection. Please call us on 01234 720016 or e-mail hocp@beford.gov.uk to arrange. Only while stocks last!

We hope you enjoy your visits to Harrold-Odell Country Park!

Ed Green Country Park Officer



Oakley Education Foundation

The costs of textbooks, tools or equipment can be daunting when starting a new school, apprenticeship, college or university course. If you are 16-25 years old and live in Oakley, you are eligible to apply for a grant from the Oakley Educational Foundation, a charity run by a board of trustees since the 1950s.

To apply, simply complete an easy application form, attach the original receipts and the foundation will assess it. If successful, they will reimburse you with a cheque. There are two occasions each year when applications are considered.

I was supported by the Foundation in my undergraduate and Masters degrees; the charity massively helped me by taking the stress away of costs associated purchase of an expensive textbook, that I otherwise would have needed to use my student loan to cover. My brother, uncles and cousins have also applied over the years for books and tools. It would be ridiculous not to apply!

Email Louise Tunley, at louise_tunley@yahoo.co.uk for more details about eligibility, details of funds available and request an application form.

Alice Worker

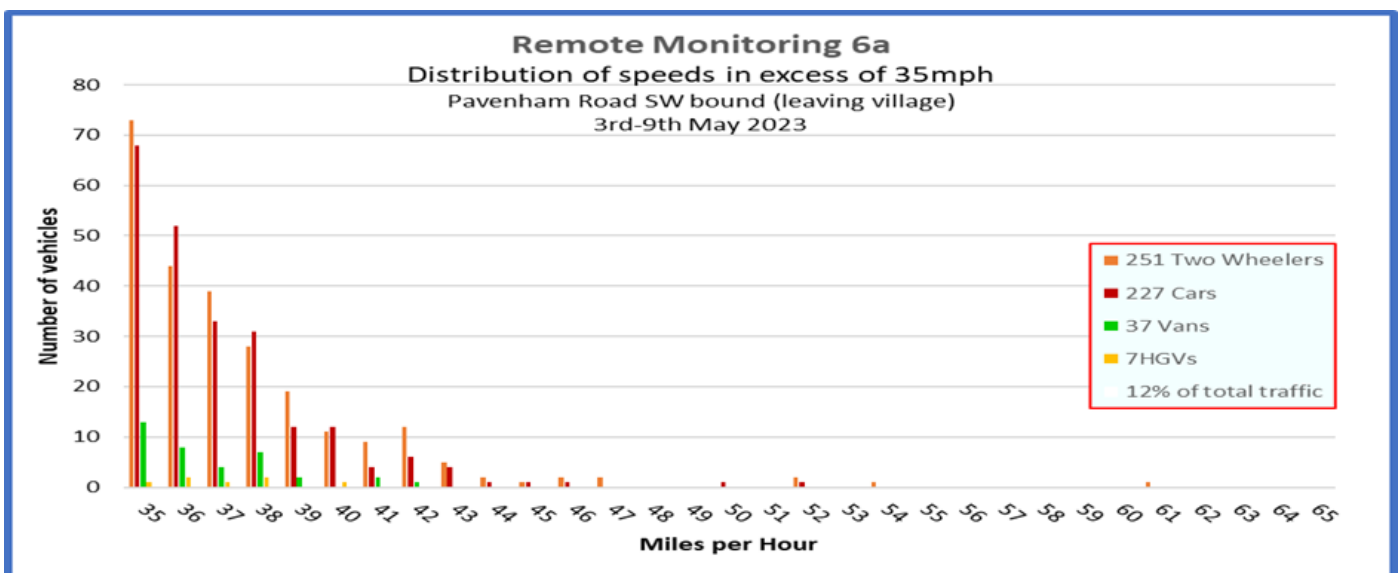


Oakley Speedwatch

Since 20th May 2022 we have been using the data collected from nearly 30 operations (2000+ vehicles) in our Building a Picture of traffic speeds around Oakley project. It has become clear that a few locations are of particular concern, particularly Pavenham Road from the crossroads away from the village and the entire length of Highfield Road (both the 30mph and 40mph areas). For example we reported 10 vehicles in the Highfield Road 40mph limit with a further 40 vehicles over the limit but within the leeway we apply. We are also watching Clapham end of Lovell Road and areas of Church Lane and the crossroads end of the High Street.

Through the considerable and sustained efforts of one of our team aided by a retired speedwatcher been able to collect details of date, time, speed and vehicle type (but not the registration number) at a location for periods of just over a week. The Viacount unit which does this has been operating on Pavenham Road at the junction of Willow Vale for a while.

In the week leading up to the Coronation some 10000 vehicles were recorded. 384 vehicles approaching the village passed at between 31-34 mph, as did 1012 vehicles leaving the village. Approaching the village 98 cars and 2 motor bikes exceeded 35mph, whilst leaving the village 251 motor bikes, 227 cars, 17 vans and 2 HGVs exceeded that speed, representing 12% of the total traffic. The fastest recorded speed was a motor bike at 67mph.



We have often wondered on operations where no excess speed has been noted whether our very presence has had the effect of moderating vehicle speeds. We were fortunate to do an operation on Pavenham Road whilst the Viacount was collecting data. It shows that our very presence lowered the average (mean) speed by nearly 3 mph and the speed range of half of the vehicles fell from 23-28mph to 21-25mph. The modal (most frequent) speed fell significantly from 25 to 21mph.

The downside to this effectiveness is that the speed profiles we create from our operation data paint a rather rosier picture of speed compliance around Oakley than is actually the case. We shall therefore be making more use of the Viacount data in our Building a Picture project and we are grateful to our two Borough Councillors in providing additional funding to erect further posts around the village (particularly in those areas in our 'watching' list on which to mount the sensor).

We have been pleased to welcome Cllr Richard Worker as our point of liaison with the newly elected Parish Council and pleased that he has completed the Speedwatch training and joined our Speedwatch group.

If you would like to get involved in helping moderate speeds around the village by spending the odd hour standing by the roadside in a yellow jacket as part of a friendly group please contact paulphilips65@gmail.com. You can be assured of a warm welcome!

Paul Philips

Connect Maths Tutor

Experienced GCSE/KS3 Maths Tutor

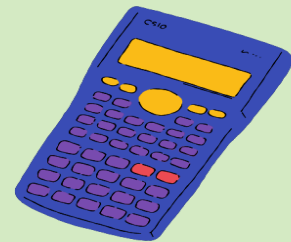
Build confidence in Maths



I can help with these subjects:



KS3 Maths
Algebra
Trigonometry
Geometry



Number
Problem Solving
Data

Ratio and Proportion
Exam Technique

Full preparation to sit and pass your
Higher/Foundation GCSE exam.

**Contact: vivianedawes@gmail.com
07810344052 to discuss your
individual requirements**

**Offering 1:1 or small group
online/face to face tuition. Book
early to secure your place.**

Almond Garage Doors Ltd



- Servicing Bedford & Milton Keynes
- Spare Parts (including obsolete makes)
- Existing Doors Automated
- EMERGENCY Call Out Service
- New Sales & Installations (Free Quotations)



01234 828953

info@almondgd.co.uk

Fax: 01234 826024

College Farm, Oakley, Beds, MK43 7RX

www.almondgaragedoors.co.uk

Oakley Village Monthly Quiz

Following positive feedback and good levels of interest the Parish Council will be running an Oakley Village Monthly Quiz. Anyone can attend and if not in a team you can come along and join one on the night.

FOUR have been scheduled in the run up to Christmas and if successful more will be scheduled in the New Year and publicised accordingly. All profits made will be collated and in March 2024 will be donated to village-based organisations.

Please advise Richard Worker at richworker@hotmail.co.uk if you intend entering a team or have any questions. Please see further details regarding the quiz below

Richard Worker

OAKLEY VILLAGE MONTHLY



Being held in Oakley Village Hall

Friday 15th September Friday 20th October

Friday 17th November Friday 8th December

7.30pm start

Maximum 6 people per team

£3.00 per person (cash payment only please)

Bring your own snacks and drinks (alcohol allowed)

**Come along and have some fun and
socialise with fellow quizzers**

Down Memory Lane - Oakley Bridges Flooded 1992



Oakley made the front page of a national newspaper in 1992.

A local government official crossing a flooded island in the Great Ouse at Oakley, Bedfordshire, on his way to work yesterday after several days of heavy rain. Some villages in the county were under three feet of water, but last night a flood alert in Bedford was stepped down. The Independent Newspaper 26/09/92.
Article provided by Hilary Reed



Join us for 'Lunch at the Mill' on
Wednesday 13th September,
 12 for 12.30 pm

EPs Ability with Fiona Ritchie
 Author & Biographer
 gives, an entertaining
 talk preceded by a



2-course lunch, tea / coffee
 Wine & soft drinks available · Raffle

Tickets £18, including lunch
 Please contact Brenda Stafford:
07484 843 141
brendastafford@talk21.com

A fundraising event for ~~Sharnbrook~~ Mill Theatre

Saturday 28th October, 7.30pm

We welcome back Gerald Dickens
 great, great grandson of Charles Dickens
 to perform the double bill:
The Signalmán & Dr Marigold,
 following his previous triumphant
 performances at The Mill Theatre of
A Christmas Carol & Great Expectations.

For further details of this performance see
www.sharnbrookmilltheatre.co.uk/signalmar

This a fundraising event for ~~Sharnbrook~~ Mill Theatre

Tickets £18 are available now in person at
 Pick-a-Lily, Florist, ~~Sharnbrook~~, and online:
www.sharnbrookmilltheatre.co.uk/tickets

Gerald Dickens
 performs his acclaimed one-man double-bill of
The Signalmán & Dr Marigold
 Sharnbrook Mill Theatre
 28th October 2023 at 7.30pm
 Tickets available online from
www.sharnbrookmilltheatre.co.uk

Little Women
 By Louisa May Alcott
 Adapted by Scott Davidson
 Produced by special arrangement with
 Pioneer Drama Services, Inc., Denver, Colorado
SHARNBROOK MILL THEATRE
 28th November-2nd December 2023
www.sharnbrookmilltheatre.co.uk

28th November - 2nd December, 7.30pm

LITTLE WOMEN

Our romantic, winter drama,
 set against the backdrop of
 the American Civil War.

Meet the March sisters
 Meg, Jo, Amy and Beth in this timeless
 and enduring classic about their
 journey from childhood to maturity.



Tickets £15 (+ £1 booking fee) from
 Pick-a-Lily, Florist, ~~Sharnbrook~~, in person or:
www.sharnbrookmilltheatre.co.uk/tickets

Wheelchair/carer: boxoffice@sharnbrookmilltheatre.co.uk



**SAVE
 THE
 DATE!**

**SHARNBROOK
 COMMUNITY CHOIR**
 10th Anniversary Concert

Friday 17th November, 7.30pm
 at ~~Sharnbrook~~ Mill Theatre
 Tickets £10 from our website soon

A fundraising event for
~~Sharnbrook~~ Mill Theatre

Take-a-Dip II

Friday 8th - Sunday 10th December
 A celebratory concert for our
 Society's 80th Year (1943 - 2023)

Steve's Snippet No.66

The answers to last issue's cryptic puzzles:-

1. Undisputable evidence of a scam affecting a Greek island:- Concrete (con Crete)
2. Countryside beyond words:- Pastoral (past oral)

With suitable apologies, of course.

David Cooke (the sole entrant) kindly donated his prize to the next competition, which will appear in the Winter edition and be something less devious, challenging, or vague (if you prefer).

Be Reassured

in the home with a Bedfordshire Fire & Rescue Service

Home Fire Safety Visit

i Are you or is someone you care about...

Over 65? Or...living with **dementia**, have a **disability**, have **adult social care needs**, **smoke** or have a **substance** or **alcohol dependency** and/or live in a **cluttered environment**.

We will:

assess your home for safety e.g., your gas & electrical appliances, access in/out of your home, smoke alarms

advise on safety issues e.g., cooking, smoking and falls

could install free smoke alarms or impaired hearing alarms if required

can help you plan escape routes in case of fire or smoke

can signpost or refer to other support if needed

i Book a free **Home Fire Safety Visit** today!

visit bedsfire.gov.uk/home-fire-safety-visit, or email

homefiresafetyvisit@bedsfire.gov.uk,

or call **0800 043 5042**.



Bedfordshire
Fire & Rescue Service



Police warn residents to be alert to courier fraud



Bedfordshire Police is reminding the public to be vigilant when being asked for personal details by strangers, either by phone or in person, after receiving several reports relating to courier fraud.

New national data has shown that people over the age of 70 are being disproportionately targeted by those carrying out courier fraud, a scam where the perpetrators often employ cunning tactics to deceive victims into believing they are assisting the police or employees from their bank.

This type of fraud typically begins with a phone call or email, where the fraudsters pose as bank officials, police officers, or other authoritative figures.

Detective Inspector James Day from Bedfordshire Police's Serious Fraud Investigation Unit said: "Unfortunately this is a very common crime type in which the perpetrators prey on the elderly and vulnerable. They end up losing valuable amounts of money and savings, which in turn leads to upset and worry.

"Please remember that the police will never ask you to withdraw money for them or call you to ask for your bank details, and never ever share your debit or credit card with anyone else. They will also never ask for your jewellery to keep it safe.

"We would advise that you always check the caller's credentials. Never click any email link you are unsure of or respond to any unsolicited emails or calls.

"If you take a call from someone who you believe is not genuine, hang up, and contact either Action Fraud or the police. Where possible use a different phone to make the call, in case the fraudulent caller is still on the line.

"If you do give your details to someone who you later believe is not credible, it's important that you contact the bank immediately.

"We would also urge people to share this information with any elderly friends, family members or neighbours and remind them of the importance of keeping their personal information safe."

You can find out more about how to report any suspicious behaviour and how to help protect yourself from courier fraud using the QR code.



Bedford Borough Planning Application 21/00332/EIA

Land Off Milton Road Clapham Bedfordshire

Application for the demolition of existing structures and out-line permission with all matters reserved except for access (access to the school to be reserved)

- for up to 500 residential dwellings (Use Class C3 - *All flats and normal houses (i.e. residential properties occupied by one "household" – normally a family – and up to 2 lodgers)*) including affordable and market housing;
- land for a new 2 Forms of Entry primary school and Early Years / Childcare facilities (Use Class E / F1);
- provision of 8 vehicular access points; pedestrian / cycle accesses to Milton Road; and
- associated infrastructure and open space





Tudor Rose Patchwork

*"Bedfordshire's
Foremost
Threadcraft
Emporium!"*



We're on Station Road

**We have lots of general sewing
needs – haberdashery and fabric!**

*Patchwork Fabrics, Kits, Patterns
Workshops - Regular Groups
Embroidery, Tapestry, Knit Yarns Beads,
Goldwork, General Sewing
Pfaff and Janome Sewing Machines
Books, Dyes, Needles, Knitting Pins ...*

**Open Monday to Saturday
9 a.m. to 5 p.m.**

**Oakley Park, Station Rd., Oakley, Beds. MK43 7RB
01234 824983 – info@tudorrosepatchwork.co.uk
<https://www.tudorrosepatchwork.co.uk>**

Oakley's Own Coffee Shop



for Coffee

Coffee, Tea, Chocolate, Cold Drinks

Hot Food, Cold Food

Breakfast, Lunch, Morning/Afternoon Tea

All Food made on the Premises!

**Open Monday to Saturday
9 a.m. to 4 p.m.**

Oakley Park, Station Road, Oakley - Phone 01234 824113



Bedfordshire Rural Communities Charity is 70! Celebrate with their Platinum Ball on Friday 3rd November

Beds RCC was originally set up in 1953 as part of the Rural Community Councils set up across the United Kingdom. During the first three years, they became associated with many social aspects of rural life – such as playgrounds and playing fields; clubs and services for the elderly; village halls and Parish Councils – which promoted improvements to their local communities. Many of this work still continues today, alongside new projects and services which have evolved over the years.

There are limited tickets available, so book your ticket soon to ensure you get a space.

Purchase your ticket here:
www.bedsrcc.org.uk/ball

Oakley Show 10th September 2023



We have a new award for this year, it is the Wendy Gater cup for the Best Kept Allotment on the Oakley site, in memory of our much missed friend and committee member. The plots will be judged during the last week of August and the winner will be announced at the Show.

The rules have been changed slightly this year which means that you can now enter 2 exhibits in any class but you will only be able to win 1 prize in a class, we hope this will help those of you who cannot decide which of your exhibits to enter.

We have chosen a slightly different title for this year's photographic class and look forward to seeing some interesting entries.

We would like to remind all the youngsters in the village that under 16 year olds can enter any of the classes for free although their age will only be taken into account in the childrens' classes.

Our facebook page 'Oakley Show' will be regularly updated and if you have any questions you can either send us a message or contact us by phone or email as detailed in the programme.

We look forward to seeing you all on the 10th September.

The Oakley Show Committee

*Bring your
garden
to life!*



OAKLEY
BUILDING & LANDSCAPES



Artificial Grass | Building & Landscaping
Driveways, Paths & Patios
Timber & Composite Decking

📞 01234 915049 ✉ info@oakley-landscapes.co.uk
📱 07803 749340 🌐 www.oakley-landscapes.co.uk

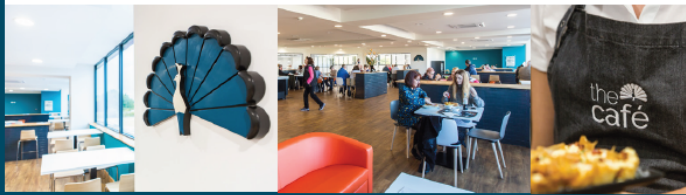


The Cafe at W&H Peacock is

OPEN

View the salerooms for our upcoming auctions and then relax with a coffee and a slice of cake.

Our unique cafe in Bedford Auction Centre with free wi-fi comfortably seats over 100 customers. We serve cooked breakfasts, paninis and sandwiches, light lunches and snacks plus a range of hot and cold drinks.



Eastcotts Park,
Wallis Way,
Bedford,
MK42 OPE
01234 266 366

Visit
www.peacockscfe.co.uk

for more details on our opening hours and to view our full menu.

W&H PEACOCK

AUCTIONEERS & VALUERS



Auction Sales & Valuations

Valuation, collection and auction service of individual items through to complete property and commercial clearances.

Call for a free no obligation quote or email info@peacockauction.co.uk

SALE ENTRIES NOW INVITED
www.peacockauction.co.uk

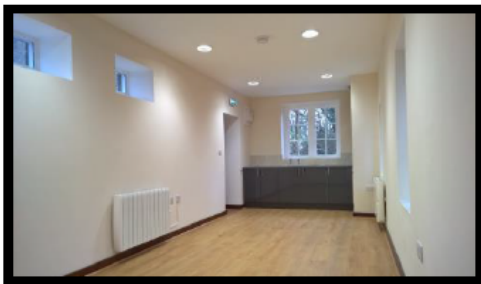
Eastcotts Park,
Wallis Way,
Bedford, MK42 OPE

01234 266366

HIRE THE OLD SCHOOL

Lovell Road, MK43 7RX,
Reg. Charity No. 1119074

- *Hall available for regular and one-off bookings at weekends*
- *Meeting Room available for regular and one-off bookings weekdays and weekends*
- *Meeting room now with self-contained facilities*



Please contact :

Bill Sellars 07980 745292

Email: billsellars@theoldschooloakley.org.uk

Web : www.theoldschooloakley.org.uk



SYDNEY HOWARD LOVELL MEMORIAL ALMHOUSES AT OAKLEY

The Lovell Homes is a small independent living community comprising two bedroomed bungalows and one/two bedroomed flats

Applicants over the age of 60 are invited to apply to go on the register of interest for a property - priority will be given to those with an agricultural or related background.

If you would like to be considered please visit the website www.lovellhomesoakley.co.uk

Or contact the Clerk :

Mandy Newton

On 07736 466965

Registered Charity Number : 200480

Down Memory Lane From cow pats and a pond to a recreation field

Today our village boasts an excellent recreation field run by the Oakley Recreation Association (ORA) with the Oakley Sports and Social Club (OSSC) at the centre of the many amenities offered. Senior and junior football pitches, a boules area, a children's play area and space for the Scouts and Rainbows, amongst others, to utilise are all available. The Oakley Motor Cycle Club and Bedfordshire Classic Car Meet also make use of the facilities. These are in addition to the many community events that are held on the field. However, that has not always been the case. Prior to the mid 1970s the current recreation field was, for many years, a cow field. Within the cow field, in the top corner by Westfield Road, there was a cricket pitch and basic wooden pavilion. Around the boundary edge there was an electric fence to keep the cows off and enable the cricketers to avoid treading in cow pats whilst fielding! Near the current club house was a large pond surrounded by trees in which my friends and I would spend hours building camps and tree houses.

In the mid 1970s the decision was made to build new houses in Church Lane and Westfield Road that backed onto the field. The cricket club vacated their home moving temporarily to the Lincroft School playing field and the cows were moved to pastures new. The upside was that when the housing development was completed a new village recreational area, accessible from Church Lane, was provided. A significant amount of work was required to create a usable sporting facility. The Saunders family provided tractors and trailers and village volunteers, of all ages, provided the labour to "stone pick", removing tonnes of stone from the field to create a better surface. The volunteers also dug utility and drainage ditches. I for one can testify that it was "back breaking" work.

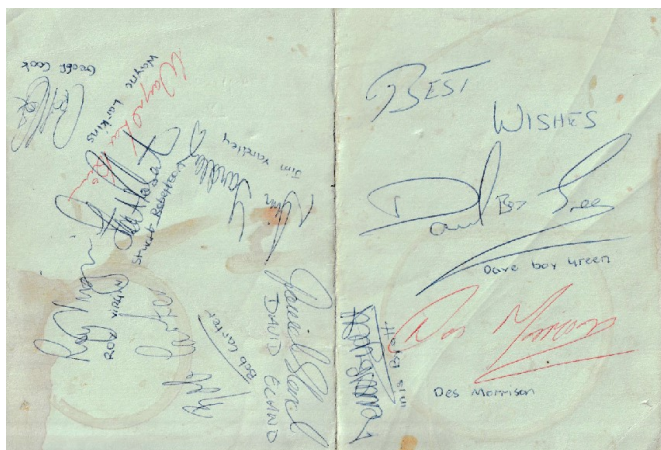
OAKLEY CRICKET CLUB		NORTHAMPTONSHIRE XI	
OAKLEY		NORTHAMPTONSHIRE XI	
1	Pete Jackson (Capt.)	1	Geoff Cook <i>4. 11 Batted Hall</i>
2	Trevor Cooper	2	Wayne Larkins <i>22 Batted Cooper</i>
3	Ken Williamson	3	Roy Virgin
4	Brian Kirkup	4	Jim Yardley
5	Bob Turner	5	David Capell
6	Alan Turner	6	Bob Carter
7	Rob Saunders	7	Stuart Robertson
8	John Church	8	Dave Green
9	Tony Wallace	9	Des Morrison
10	Ian Hall	10	Dennis Byatt
11	Brian Gallagher	11	Dick Downing

UMPRES - Mike Howard - Joe Jefferies (Price 10p)

In 1978 the cricket club moved back into the field onto a newly laid "square" and outfield. Initially the changing facilities comprised a tent in a corner of the field!! However, in 1979 funds were raised and a second hand wooden building was purchased from Bedford Rugby Club. Volunteers re-assembled it to provide not only changing rooms but a small clubhouse forming the first OSSC. The ORA committee decided that the new facilities deserved a "grand opening". One committee member was John Morris, a sports journalist who became General Secretary, British Boxing Board of Control, a high office in the boxing world. John had strong connections with boxing and also with Northants County Cricket Club.

He assembled a "celebrity team" to play Oakley Cricket Club to mark the formal opening. The celebrities included the Northants players Wayne Larkins, Geoff Cook and David Capel all of whom earned England Test and One Day International caps. Two well known boxers at the time also played; Dave "Boy" Green and Des Morrison. Dave won British and European titles and challenged unsuccessfully for world titles and Bedford based Des won British and Commonwealth titles. Pictured is the scorecard and autographs captured by yours truly on the day. Two things to note. Firstly, despite their status, Cook and Larkins were dismissed for few runs. Secondly, the scorecard contains little detail because, sadly, the heavens opened and the bumper crowd had to run for shelter and the game was abandoned after only a few overs.

Despite the abandonment and disappointment the new recreation field and clubhouse were now officially opened and in 1981 Oakley Rangers FC moved onto the new football pitch. The club house and facilities have developed considerably since the "celebs" came to our village but I swear that in the deadly quiet of night you can still hear the odd "moo" made by the ghosts of Ermintrude, Daisy and their herd !!!!



Richard Worker

Oakley Kindergarten News

We have now completed a whole school year in the new building as Oakley Kindergarten!

It has been hard work, but very rewarding, as we see all our ideas come to fruition.

Our first summer holiday club, to offer some 'wrap around care', during the school holidays, ran until 11th August. This was the first time we had provided this facility and it was really well attended. We hope, that by increasing our offer, we are helping to meet the growing need for childcare and education in our local community.

Our Open Morning in July saw prospective parents and interested villagers, alike, come and have a look at what we have to offer. Our outside space, in particular, is a hidden treasure that you cannot fully appreciate, unless you come into the kindergarten.

At the end of the summer term, we employed another new Level 3 Practitioner to join our team. Megan Drury will be working in our Petals Room. She has been in helping us out with our holiday club and we look forward to welcoming her back in September.

We are looking forward to the new term and have lots of new children joining us. We will be back on 4th September, but for now are taking a well-earned rest.

We still have a waiting list for our Rosebuds (Baby Room) but we do still have spaces in our other rooms. Do get in contact, if you are interested to have a look around or for your child to join our kindergarten. Please see details below.

Admissions

If you would like to register your child for a place at pre-school, please contact us on 01234 826452 or by email: info@oakleypreschool.com Our website is: www.oakleypreschool.com

Follow us on Facebook to keep up with our latest news and events.

For information on funding you can see details on our website with a link to Childcare choices or alternatively you can contact the Family Information Service 0800 023 2057

Sally Martiello



Bedford Borough Council begins resurfacing of Paula Radcliffe Way from 24 July

The resurfacing work will be carried out in two phases. Initially, the southbound carriageway, leading towards Bedford, will be closed from 24 July until early September. Following the works on the southbound carriageway, the northbound carriageway from the Great Ouse roundabout to the Oakley slip road will be closed from the start of September until the end of October.

During these closures, traffic will be diverted through Clapham, allowing for the uninterrupted progress of the project. The road closures will be in place 24 hours a day, with the contractor working around the clock to complete the work as quickly as possible.

As well as resurfacing, this also provides an opportunity to make a detailed inspection of the river bridges, make any repairs and replace the expansion joints. As well as the road itself, the lay-bys will also be resurfaced. Streetlights and crash barriers along this stretch of road will be reviewed and any repairs that are needed will take place. These smaller projects will help keep this route safe and minimise the need for future disruptions.

There will be some further road closures required after October to complete resurfacing between the Oakley slip road and Milton Ernest. These works will be carried out overnight only, from 8pm to 6am, with a diversion route via A45 and A509.

It is possible to find further information on roadworks and road closures in Bedford Borough at www.bedford.gov.uk/roadworks.



DAVID JAMES

WWW.DAVIDJAMESKITCHENS.CO.UK



We are a local manufacturer of beautiful kitchens. We sell direct to save you money. The factory showroom has an extensive display of different styles.



SAVINGS ON ALL KITCHENS
& Up To 25% Off Top Brand
Appliances

PULLOXHILL BEDS MK45 5EU
01525 722230



NAO Cattery



BOOK NOW!

07411 136691

naoservices111@gmail.com

www.naoservices111.weebly.com

Bramble Lodge, 29 Oakley Road, Clapham, Bedford MK41 6AN

Opening Hours: 9.00-11.00 Mon-Sat & 18.00-19.00hrs Mon-Fri
Sunday and Bank Holidays Closed

* Note that all boarding cats must be healthy on arrival and fully inoculated against cat flu and contagious enteritis. Terms and Conditions apply, charge includes insurance and vet on call.

NAO Cleaning

- Regular cleaning (Weekly, Fortnightly, Monthly etc)
- Home Care Cleans
- Spring cleans
- Moving In & out clean
- Builders before and after clean
- Tenancy beginning & end clean

FOR A **FREE ESTIMATE** CALL TODAY ON
07411 136691

Bramble Lodge, 29 Oakley Rd, Clapham, Bedfordshire MK41 6AN
www.naoservices111.weebly.com
naoservices111@gmail.com

We cover all of Bedfordshire

RP TESTA

PLUMBING & HEATING SERVICES LIMITED

A professional service with over 25 years experience :

All general plumbing requirements
and full design & installation for:

- ◆ CENTRAL HEATING inc. LPG
- ◆ BATHROOMS inc. tiling etc.
- ◆ UNDERFLOOR HEATING
- ◆ UNVENTED HOT WATER



FOR A LOCAL AND RELIABLE SERVICE CALL

T: 01234 781827

www.testaplumbingandheating.co.uk

Bedfordshire Festival of Autumn Walks

Hosted by 

9th to 17th September 2023

Explore our beautiful little county on foot



All walks are free and most do not require booking

Full details on

www.lramblers.org.uk/BFAW

Leighton Buzzard Ramblers, North Beds Ramblers
Lea & Icknield (Luton) Ramblers, Ivel Valley Walkers



Bedfordshire Festival of Autumn Walks

Bedfordshire Ramblers are delighted to announce the first Bedfordshire Festival of Autumn Walks. The Festival, offering over 30 walks, will run over a 9 day period between the 9th and 17th Sept 2023.

There is a plethora of walks on offer to suit all over the period - long walks, short walks, well-being and interest walks. Walks are scheduled in the mornings and afternoons in addition to all day walks.

Most of the walks do not require booking. Walks take place over the length and breadth of Bedfordshire – join us for one (or more) walks and explore our beautiful little county on foot.

The festival is being run with the cooperation of the four groups that make up Bedfordshire, namely Leighton Buzzard, North Beds, Lea and Icknield (Luton) and Ivel Valley Walkers.

NBR Festival walks are as follows;

Sept 9th Walk from Roxton 10:00am 12 miles

Sept 9th Walk from Riseley 10:00am 4.3 miles

Sept 9th Walk from Roxton 13:30pm 7 miles

Sept 11th Walk from Beeston Green 09:30am
3 miles wellbeing walk

Sept 12th Walk from Silsoe Community Sports Centre 10:00am 3.7 miles wellbeing walk

Sept 13th Walk from Harrold Country Park 10:00am 11 miles

Sept 14h Walk from Colmworth Golf Club 10:00am 5 miles wellbeing walk

Sept 14h Walk from Priory Park 09:30am 5.5 miles with John Bunyan Boat, booking required

Sept 16h Walk from Old Warden Church 10:00am 5.5 miles

Sept 16h Walk from Stagsden 13:30pm 7 miles

Sept 16h Walk from Clophill 13:30pm 6 miles

Sept 17h Walk from Mowsbury Park 10:00am 6 miles

Sept 17h Walk from Upper Dean 13:30pm 6 miles

Check out the full program on www.lramblers.org.uk/BFAW or join our dedicated Facebook page to be kept up to date <https://www.facebook.com/groups/1624342594751555>

CLAPHAM SCHOOL FOR SENIORS

We are ready to welcome back members and new members (over 45 yrs) who want to start a new hobby or continue a hobby.

We meet on Wednesday (term time only) at Clapham Methodist Church on the High Street 9.00am – 4.00pm. The fee is £20 per term payable on enrolment day which is the first day of term 13th September.

Group subjects include: Scrabble, Dominoes, Lace making, reading, singing, Arts & Crafts (of all types), knitting, crochet, painting and a couple of new classes of card making and a cribage card school.

Bonuses are you get to meet new people/friends and join in the community spirit! And of course, learn a new hobby.

Please note we do not supply the materials you will need to bring them along.

Any questions or queries please give us a call:
Berta Barnes or Miriam Pulman
07704 850974 07790 267176



Oakley Allotments

An old friend, now long gone, said to me that he disliked the chiming of clocks because they reminded him that life was ticking away – it seems to me that our allotments mark the years in a similar way, the quarterly newsletters chiming away the seasons.

I realise that a new issue is due, and think what can be said about gardening or our allotments that has not been said before (in fact, I think I may have used that introduction before...) Well, the changeable climate helps to provide a conversation starter, as always, and this time of year enables us to summarise how the main part of our growing-year has turned out.

Every year we are surprised by the weather, which is a critical part of the success or failure of a lot of planning and hard work. This year a particularly cold winter killed off a lot of plants which would survive a modern, often comparatively mild, winter. For some years my own allotment enjoyed the regular resurgence of a Passionflower, whose flowers were amazing and whose fruits were just about edible in our still barely-suitable climate: the winter finally killed-off the plant.

Since then, we have endured some particularly dry spells, when it looked as if the year would be one of drought. That drought turned to deluge and the weather has been unusually wet and cold since. Despite this, plants have grown well, and harvests, although about a month later than "normal", have been good.

All plants have grown well, especially weeds and grass – the grass still needs regular mowing, which is unusual at this time of year. This issue's contributor has been particularly concerned by the weeds coming from other, less well-maintained allotments, but has rallied round to report some welcome success: from Jules T. who contributed in Issue 93:-

Hello everyone, I promised you all a summer update, so here it is....

The progress on my allotment is worlds apart from where it was this time last year. For any new allotment owners, I must say my strategy and hard work have paid off. My allotment is low maintenance, which means I now only have to pop down there to water or harvest, generally every couple of days, sometimes less when it has rained.

The raised beds and woodchip have enabled me to keep easier control of the weeds on the allot-



ment. Covering around the beds with thick membrane has really helped to keep the allotment



clean and tidy. I am able to watch it thrive from the deck, sipping a cup off tea or a gin or two ☐. Like any newbie there is a lot to learn when taking on an allotment and this year I have learnt the hard way! I got caught out by the late frost which badly affected my plants and none survived. Thank goodness for Milton Earnest Garden Centre, their vegetable plants saved the day: my allotment has begun to thrive again and I am harvesting regularly.

Thank you Jules - I hope your hard work continues to give great results.

In another earlier issue I briefly mentioned Mason Bees, which a new tenant had hoped to introduce to help fill the gap left by the decline in Honey Bees. Mason Bees are now more common, perhaps they have less competition, but some studies have shown that they may be more efficient pollinators than Honey Bees. Mason Bees use existing holes and crevices to build brood chambers, where they lay individual eggs and provide the soon to hatch grubs with various food, often pollen. So, simply providing drilled pieces of wood or a more ambitious bee-hotel can encourage them and help them to prosper.

There has certainly been no shortage of pollinators on my allotment – the pollinators may be solitary bees, bumble bees or even moths and butterflies (perhaps encouraged by our no-mow areas this year), but the courgettes are growing in large numbers

again. One of this issue's Snippets gives two easy recipes for using courgettes.

Nationally, our insects are in serious decline, but here, on our allotments, on a recent

sunny morning, we counted twenty Large White butterflies, one Brimstone, two Commas, many Meadow Browns, one Common Blue, two Red Admirals and many and various day-flying moths. Also many solitary bees of various types fed amongst our allotment's flowers and our neighbour's lavender. Encourage and help our vital insects and never use insecticides or herbicides where there are alternatives.

At the moment all of our allotments are taken and we don't have a waiting-list. Please contact the clerk if you would like to join us.



Steve Nicholas

Oakley Rural Day Centre

Oakley Rural, The Old School, Lovell Road, Oakley, Beds, MK43 7RX

Tel: 01234 824935 Mobile: 07733 227374

Email: oakleyruraldaycentre@yahoo.com

Web: www.oakleyruraldaycentre.weebly.com

Registered Charity No: 1060283



NEWSLETTER Autumn 2023

Welcome to our latest Newsletter. If anyone has access to the internet please visit our website, www.oakleyruraldaycentre.weebly.com The site is updated regularly with the latest news from the centre.

We also have a [Facebook](https://www.facebook.com/oakleyruraldaycentre) page. This will be updated with the latest news and photographs of events at the centre. The [Facebook](https://www.facebook.com/oakleyruraldaycentre) page can be found at www.facebook.com/oakleyruraldaycentre We are also producing articles in various publications throughout Bedford and surrounding areas to raise the profile of the centre.

We are all looking forward to some warmer weather and go for some short walks with the clients or sit in the beautiful grounds at the old school.

PLACES AVAILABLE

Our Day Centre provides our older people with a place where they can make friends in a warm and comfortable atmosphere. A range of activities including crafts, entertainment, quizzes and good old conversation are at the heart of our day.

We serve freshly prepared home cooked lunches together with tea, coffee and toast at the start of the day with beverages throughout. The Centre is open Tuesday, Wednesday and Thursday, 10.00am to 2.30pm.

For details of costs and advice please contact Lynne on 01234 824935 or 07733 227374.

Enquiries welcome from Bedford and surrounding villages in North Bedfordshire.

ACTIVITIES AND ENTERTAINMENT

Since our last newsletter we have been taking part in many crafts and games. We have been making cards, note books, wind chimes decorating trinket boxes and playing various word games which everyone enjoys. We now have chair based exercise classes over three days. Our clients really enjoy taking part and we are seeing benefits in their movement and strength, especially standing from sitting positions.

We are planning on having a mini indoor sports event with ping pong, darts, putting, throwing and catching games. Some of our clients are really competitive and I am sure it will be a fun week. A real favourite is a music quiz which brings back memories of yesteryear.

We continue to receive the support of Kempston Hammer Choir, the Wells Hollow Band.

SUPPORT THE DAY THROUGH EASY FUNDINGRAISING

Did you know that whenever you buy anything online – from your small to large purchases – you could be raising free donations for Oakley Rural Day Centre with easyfundraising? There are over 7,000 brands on board ready to make a donation – including eBay, Argos, John Lewis, ASOS, Booking.com and M&S – and it won't cost you a penny extra to help us raise funds.

All you need to do is:

1. Go to easyfunding.org.uk and register on the site and choose the Oakley Rural Day Centre as your preferred charity.
2. Every time you shop online, go to easyfundraising first to find the site you want and start shopping.
3. After you've checked out, the brand will make a donation to Oakley Rural Day Centre at no extra cost to you whatsoever! There are no catches or hidden charges and Oakley Rural Day Centre will be really grateful for your donations.

Thank you for your support.





Thank you to everyone who has supported the youth club this term

We have a wonderful group of children.

We look forward to continue outside as summer approaches and have lots of activities planned.

We have spaces available

for new members too,

please contact us.

7-9pm every Friday during term time.

£2 entry plus money for our ever growing tuck shop.

Sonya, Jules, Maddison and jj.



Oakley Gardening Club

12th September. Kathy Browns Garden

October AGM to be arranged

An Email will be sent to all members in due course.

Denise Hookham

Uncomfortable with letting strange people into your home?

We are an **all-female** team of interior painters and decorators, working in the north beds village area. Fully experienced in hanging wallpaper, painting – including paint effects, restoring and repairing surfaces, wallpaper stripping and all general home decorating. We are all individually CRB checked, will provide references and testimonials showing the standard of our workmanship giving you peace of mind. We will come to your home to discuss your exact requirement, offer advice and produce a free written specification and quotation. We will then arrive on time, keeping disturbance to the minimum and deliver a quality job using only top quality materials.



OAKLEY ANGELS
The all-female painting and decorating team

- **Trustworthy**
- **Experienced**
- **Guaranteed work**
- **Peace of mind**
- **High quality work at a reasonable price**

Phone: 07989 778345
or: 01234 822499

Girlguiding in Oakley



Oakley has two guiding units – Rainbows for girls aged 4 -7, and Brownies for girls aged 7-10.

If you would like to enrol your daughter in either of these units or any other units locally, please register your daughter at <https://www.girlguiding.org.uk/information-for-parents/register-your-daughter/>

If you would like more information about the individual units before you register your daughter, you can use the contact details below.



1st Oakley Rainbows (Wednesdays)

After a very busy Summer term, with several meetings spent outside enjoying the good weather, enquiries to join us have been flooding in over the holidays, and we are currently full. However, we do hold a waiting list, so even if your daughter has not turned 4 yet, please register

her on our website.

Unit contact: Amanda Keen (Assistant Leader) oakleyclaphamrainbows@outlook.com



1st Oakley Brownies (Fridays)

Making the most of the warm June evenings, we spent time outside starting the Explorer Badge, exploring the recreation ground and Browns Wood. As well as learning about the Country Code, games and den building were enjoyed by all. Back at the Scout Hut, as the weather deteriorated, we were able to work on map

and compass skills in addition to playing plenty of games. To mark the end of term we had a pizza party.

We also did Teas at the Church where Brownies enjoyed serving cakes and drinks and it was also good practise at dealing with money and calculating change. Brownies received lots of compliments for their work and we were grateful to people from the church for making everything clear and giving us the chance to use the speedy dishwasher!

From September there are a few places at Brownies for girls aged 7-10. If you would like your daughter to join, please sign up on the website: www.girlguiding.org.uk (register a child).

Lindsay Saunders



Greeting the paragliders near Brown's Wood.



Oakley Village Hall

Church Lane,
Oakley,
Bedfordshire, MK43 7RJ

A well-appointed village hall
Main hall with stage and PA system
(Main hall is air conditioned)

Separate meeting room with bar

Well equipped kitchen

For information and bookings
please telephone 07788 796996



For all Pre-School Children
At St Mary's Church Oakley on
Thursdays during School Term 10am to 11.45

Crafts, Painting, Play, Music, Stories and a
Healthy Snack plus tea/coffee for the adults

More detail from Dorothy Palmer at
01234 823959



OAKLEY BADMINTON CLUB



Lincroft Sports Centre

Come and get warm, fixed charge !

Every Wednesday 7.30- 9.00pm

All ages and abilities welcome.

Tel. 07557 441206

NIGEL L. WILLE

PLUMBING & HEATING ENGINEER

GAS SAFE REGISTERED

BOILER REPLACEMENTS

FULL CENTRAL HEATING INSTALLATION

BATHROOM SUITES

RADIATOR REPLACEMENTS

TAP REPLACEMENTS

ALL DOMESTIC PLUMBING, HEATING WORK
AND REPAIRS UNDERTAKEN

FOR A FRIENDLY SERVICE
PLEASE CALL NIGEL

Tel: 01234 822962

Mobile: 07778 800595

Email: nigel.wille@sky.com



News from the tower

The great thing about being able to ring church bells is that you are welcome in any bell tower. Some members of our Oakley band attend practice nights at other bell towers when they are on holiday. We sometimes have visiting ringers at St Mary's, a group on a ringing outing or one or two ringers coming along to our practice night, like the experienced bell ringer from Wembley who popped by to have a ring recently. It



is useful to ring at other towers because each ring of bells is different. Some are easy to ring, while others take a bit of getting used to.

Changing the subject to the church clock, those of you who keep an eye on the time, will have noticed that the clock does not always strike the right time! The clock mechanism has recently undergone restoration and it is a painstaking process to get the striking mechanism working at the correct time. It requires regular adjustment. If you are interested in finding out more, there is a really interesting video about the clock restoration on YouTube <https://www.youtube.com/watch?v=hiHjruLTmII>, thanks to film producer, Ray Cordell, and church warden, Graham Palmer.

Shelley Eden

Parking app scams: drivers tricked into signing up for expensive subscriptions

Rogue advertisers are setting up recurring payments, warns Which?

Rogue advertisers are hijacking promotions for parking apps and using QR codes to trick victims into setting up recurring payments.

We're concerned that consumers are being targeted with misleading adverts designed to sneakily sign them up for pricey subscriptions.

We recently received a warning about a website called Alltainment from a member of the public. 'I tried to sign up for a parking app and instead was directed to a site which took my card details and signed me up to pay £39.99 a month, nominally for an entertainment package. This seems to have caught quite a few people out, according to Trustpilot. I think they are using the name of a defunct company,' they told us.

All but one review for this website on Trustpilot is one star, and while some people said they have no idea how they ended up paying a subscription to Alltainment, a closer look at the complaints reveals that this rogue firm seems to be targeting the public in two key ways.

- **Parking apps:** most reviewers said they tried to download parking apps – such as JustPark, Parkonomy, PayByPhone and Ringgo – but somehow ended up signing up for Alltainment instead.
- **QR codes:** others said they scanned QR codes - for example in person at a restaurant or online via various websites and unofficial app stores, and were diverted to Alltainment unwittingly.

If you give away bank details or lose money to a scam, call your bank immediately using the number on the back of your card and report the scam to Action Fraud.



CAMEO BLANKETS FOR UKRAINE

Everyone in Oakley will have seen the splendid display of poppies around the village in November knitted by members and friends of Cameo. What most of you will not have seen are the blankets produced from the squares knitted by the same group for Ukraine.

Oakley knitters became involved in knitting blankets for charity over 10 years ago when I heeded the call of my friend, Jean, for Oakley WI to knit squares for blankets for Kosovo. Jean's knitting group in Cholsey, Oxfordshire, had established a connection with the charity Hope & Aid Direct and, at that time, blankets were needed for Kosovo, where refugees from the Bosnian war were still living in camps. As the migrant crisis in Europe grew, blankets were required in Greece and France, and by 2022 Cholsey Knitters had made 180 blankets, which were distributed by Hope & Aid where needed.

In March 2022 at the start of the war in Ukraine, Hope & Aid were urgently requesting blankets for refugees in Ukraine and bordering countries. That month 23 blankets, each made up of 63 x 8" squares, were produced by Cholsey Knitters and to date an astonishing total of 130 blankets have gone to Ukraine. Cholsey Knitters group is assisted in its efforts by knitters in Essex, Hampshire and, of course, our Oakley Cameo Knit & Natter group, here in Bedfordshire. In August 2022 we dispatched enough squares to Cholsey for 2 blankets and last month 2 more. One of the latest blankets incorporated a blanket made by Oakley Brownies about 15 years ago, when the girls were learning to knit! Hope & Aid delivers the blankets directly into the hands of those needing them and we know from feedback from Ukraine how much they are appreciated.

If you enjoy knitting at home and would like to contribute squares to this very worthwhile project, please contact me at anneyoungman@btinternet.com; or come along to Cameo's Knit & Natter group, which meets monthly at the Bedford Arms from 2pm to 4pm. Phyllis Jones can be contacted at phylmaj@gmail.com for details of dates. Phyllis has a supply of wool for use and she is always happy to receive further donations. As the group's name suggests, you are welcome to join us for a natter without knitting!

Anne Youngman



All these families lost their homes and they don't even find the words to express their gratitude to You for the warmth at their temporary homes. I was really crying when presenting these blankets to them and saw their thankful eyes.

With Love to all Your team
Alla Nalyvaiko



oakley *Motorcycle* club

Despite the poor Summer weather we have still managed to run our scheduled events albeit with a fair amount of rain that seemed to happen whenever we had our sponsors at Oakley Club with new motorbikes for test riding. However many thanks to St Neots Motorcycles, Flitwick Motorcycles, BMW Wollaston, CooperB, The KTM Centre and Grafton Honda for braving the elements.

The OMC bike jumble finally went ahead on 8th June after two postponements and we raised a magnificent £1200 plus that evening for the East Anglian Air Ambulance.



On 6th July we held our annual American theme night which was an open event and saw 500 motorcycles, 60 American show cars in attendance plus a dragster that arrived via a trailer. We were entertained during the evening by the ever popular Blues Brothers. It was good to see so many people from the village.



Our annual Bike of the Year Award was held on 27th July. Thankfully the weather remained dry for the evening after rain in the morning and I am sure it had a detrimental effect on would be entrants as numbers were down to 14 bikes this year when last year, in scorching sunshine, we had 29. However, may thanks to all those who brought bikes along to be judged we had some amazing machines on show!

A huge thank you to our Judge of the evening Mr Guy Willison who is one of the UK's most talented motorcycle designers and builders and recognised for his television work on The Motorbike Show, Shed and Buried and Find It, Fix It, Flog It. Guy is also an OMC member and regular attendee.



The results were 3rd place and an Oakley Club voucher for £75 to Gary Muir of Brickhill, Bedford with his bespoke

1970 500cc
Kamikaze
(Kawasaki)



2nd place and an Oakley Club voucher for £125 to Keith Hubbard of Bromham with his immaculately restored

1974 Honda
CB175

1st place, winning the OMC Bike of the Year Shield together with a £200 Oakley Club voucher, went to Adrian Korenika of Denton, Northants with his exceptionally rare and immaculate

1952 Tornax V200.



CLASSIC CAR MEET

BEDFORDSHIRE

After our scheduled meets in April and May were washed out thankfully the meet on 13th June was a lovely warm dry evening which saw a huge turnout of some fantastic vehicles. However, the Summer still has not been kind to us with light showers during our meet of 11th July halving car numbers from the previous month. Worse was still to come on the 8th August. Some light rain



was forecast in the afternoon but in fact it started raining around lunch time and continued throughout the afternoon and some of the evening. Needless to say many of our vehicle owners do not want to bring their pride and joy out in adverse weather saw we only saw 60 show cars



turn up, which is not too bad really.

The last event for the year will be **Tuesday 12th September** so let us hope for a fine day and evening and close the year with a great night!

Luke and the Classic Car Team

Oakley Motorcycle Club - Continued

To be honest I had to Google this one and Tornax was a company in Wuppertal, Germany who made bikes between 1926 and 1955. Well done Adrian, Keith and Gary and all those who brought their bikes along!



Winner Adrian Korenika with Guy Willison and OMC Chair Roger Bays

On the same evening OMC presented Steve Varney from the East Anglian Air Ambulance with a cheque for £2,234.00. Many thanks to all those who donated kit, accessories, memorabilia and

much, much more for the Bike Jumble held in June. Also thanks to our regular Thursday night attendee, James Ford aka Mr Ice Cream Man, who attends every Thursday and at all other events at Oakley Club, then donates a percentage of his sales to the EAAA. Also a big thanks to everyone who has donated at OMC to this amazing charity. It is because of you that we have been able to raise such a large amount. This now takes our **total fund raising for the EAAA to over £43,500!**





Oakley Sports & Social Club

Family & Sports Bar

FAMILY FRIENDLY :: OPEN DAILY

Situated in the picturesque village of Oakley near Bedford, Oakley Sports & Social Club is a registered charity that is home to AFC Oakley, Oakley Motorcycle Club, Bedfordshire Classic Cars and a lot more.

We offer a large recreational play field, well equipped children's play area, tennis courts & pentanque court.

MANY EVENTS HELD THROUGHOUT THE YEAR - SEE OUR WEBSITE & FACEBOOK FOR DETAILS



FANTASTIC FACILITIES



AFFORDABLE FOOD & DRINK



WELL EQUIPPED PLAY AREA



LOCAL + SKY SPORTS & BT

KITCHEN OPEN
THURSDAY & FRIDAY 3PM - 9PM
SATURDAY & SUNDAY 12PM - 7PM



HOME OF AFC OAKLEY

Oakley Sports & Social Club is a registered charity who's primary aim is to cater for the local community

OAKLEY SPORTS & SOCIAL CLUB, CHURCH LANE, OAKLEY, BEDFORDSHIRE MK43 7RJ :: 01234 824977 :: WWW.OAKLEYSSC.COM