



# Oakley Newsletter



**Spring 2022**

Number 90

**Look inside for**

**Beacon Lighting Details**

**Oakley Youth Club**

**Highway Code Changes**

**Oakley Village Show 2022**

**New OSSC Stewards**

**DIY-dle**

**New Community Police Officer**

**Methodist Church Coffee Mornings**



**Front Cover : Snowdrops**  
**Photo by Bill Chalker**

#### **The Oakley Newsletter**

is published quarterly by Oakley Parish Council and delivered by parish councillors free to every house in Oakley – about 1,000 copies.

#### **Opinions and information**

in the Newsletter, both text and adverts, may not be endorsed by the Editor or the Parish Council.

#### **Next issue**

Final copy date for the Summer issue is 20th May 2022.  
The publishing date is 1st Jun 2022.

#### **Advertising rates**

Colour Advertisements  
Quarter page: £30

Half page: £60

Whole page: £120

Four consecutive quarter page adverts - discount 10%

Black & white advert rates are available upon request.

Loose inserts, any size up to A4: £100  
Invoices will be issued by Ann Paice, with payment to Oakley Parish Council.

#### **Editor**

Bill Chalker  
13 Bevery Close  
Oakley  
MK43 7SH  
07789 997733  
bill@chalker.eclipse.co.uk



#### **Printers**

White Hart Press  
58a York Street  
Bedford MK40 3RL



#### **Hello Children**

look out for  
Ten more  
little ones



## *Parish Council News*

### *Spring 2022*

Hello All

I hope you had a good Christmas and also a good start to the new year. It is great to see the days lengthening and to see the spring flowers starting to show their colours, predominantly the white of those fragile but strong and hardy snowdrops and the yellow of the aconites. To me Spring is such a lovely time of the year preparing us for what is to follow.

Once again our Christmas lights were very successful. The 'Switch On' took place on the cold evening of Saturday 27 November 2021, which seems an age ago, at St Mary's Church. A number of people turned up in good voice for carol singing and we were very grateful to Reverend Catherine Wilson for leading the carol singing and prayers and indeed the St Mary's Volunteers for supplying the very welcome refreshments. The lights remained on until 6 January 2022 when they were switched off. Many favourable comments were made about the lights, and we set ourselves a standard below which we must not fall!

#### **Inconsiderate Parking**

I was starting to think that car users were being much more considerate with the way they park and where they leave their vehicles, but of late I have noticed a massive change in behaviour. It appears that it has almost become the norm to pull on to the pavement without considering the need of and the likely danger to pedestrians. If there is no pavement then the grass verge is used. This really is unnecessary, is inconsiderate and at this time of year the grass tends to get churned up. Please do not do it and where possible please pass the message on. Residents should be aware that Bedford Borough Council, along with many other local authorities, is consulting with a view to applying for increased powers in relation to both moving and stationary vehicles. Some offences that have not been enforced may well be in the future.

Continued on page 3

## **OAKLEY PARISH COUNCIL**

### **PARISH CLERK**

**Ann Paice**  
31 Radwell Road  
Milton Ernest  
Bedford, MK44 1SH.  
07873 887370  
parishclerk@oakleyvillage.co.uk

### **CHAIR**

**Paul Phillips**  
3 Station Road. 824260  
paulphillips65@gmail.com

### **VICE CHAIR**

**Jane Walker**  
(Parish and Borough councillor) 11 Dewlands  
07952 879587  
jane@janewalker.co.uk

### **Jonathan Abbott**

(Parish and Borough councillor)  
13 The Furlong 950868  
jonathan.abbott71@icloud.com

### **Pat Olney**

33 Station Road. 824384  
pat.olney@btopenworld.com

### **Sara Fardon**

61 Lincroft. 824516  
sarafardon@yahoo.co.uk

### **Michael Frampton**

The Little House, The Drive  
822181  
michael\_frampton@btinternet.com

### **Phyllis Jones**

35 Ruffs Furze 910187  
phylmaj@gmail.com

### **Stephen Nicholas**

44, Grenidge Way 824345  
sbnicholas@gmail.com

### **Gerry Sansom**

21 Pavenham Road.  
823295  
gerrysan-  
som@btinternet.com

### **Robert Saunders**

College Farm. 822328  
rjsaunders5591@gmail.com

### **Paul White**

20 Reynes Drive. 825472  
paulwhite20rd@gmail.com

## Horses on Footpaths

In recent weeks we have noticed that horses are being ridden or walked along footpaths, particularly the footpath that runs from Pavenham Road into Linch Furlong, along the river bank in the general direction of Milton Ernest and on grass areas at Browns Wood. Please do not do it; there are adequate bridleways where horses can be ridden or walked. Thank you for your co-operation.

## The Queen's Platinum Jubilee

As part of our celebrations for The Queen's Platinum Jubilee over the four day weekend at the beginning of June, this village will join forces with our neighbours Clapham, and possibly Milton Ernest and Thurleigh, to **light the Beacon** in the field at The New Brown's Wood just off the Highfield Road roundabout. This is a special tribute to Her Majesty The Queen especially as this will be the last chain of Beacons lit in the Queen's reign. Both nationally and internationally the support has been extremely positive. Activities will take place in the United Kingdom, Channel Islands, Isle of Man, UK Overseas Territories and in each of the Capital Cities of the Commonwealth Countries so timings and plans have to be quite precise. Activities relating to the Beacon Lighting will take place during the evening of **2 June 2022** and will follow the official organiser's program for the evening. Those attending need to plan to be at the site of the Beacon in good time where at **9.35pm** it is hoped that we will have a local Piper to play *Diu Regnare*. At 9.40pm we hope to have a local Bugler to play the unique Bugle Call – 'Majesty', then officially announcing the lighting of the Beacon at 9.45pm by Richard Fuller Conservative MP for North East Bedfordshire. We also hope that we will be able to invite a local choir to join us to sing the winning Commonwealth-wide song when the Beacon is being lit. It will be a unique musical tribute to Her Majesty The Queen that evening, filling the world with the sound of music and song.



Furthermore to assist the sustainability of our planet, where possible and practical, the organisers are encouraging those lighting beacons to plant a circle of seven trees at a later date at locations of their choice, with each tree representing a decade in the Queen's seventy-year reign. Tree planting can be part of 'The Queens Green Canopy' in honour of the Jubilee. Bedford Borough Council is giving away up to five trees for residents and up to twenty five for Community groups, Schools and businesses. The Parish Council will be claiming twenty five, some of which may well be planted in Brockwell Meadow and other parts of the village that may be considered suitable. We also plan to plant an Oak tree in Riverside Meadow to mark the Corona Virus

pandemic.

Additionally, on this same weekend, Reverend Catherine Wilson will be holding a service of celebration for Her Majesty's Jubilee at 10.30am on Sunday 5 June 2022. This service will be supported by members of the Parish Council and it is hoped that it will also be well supported by village residents.

It is likely that further information about the Jubilee celebrations and activities will be found on noticeboards, the Village Web Site and social media, because our next publication of the Newsletter will be at the beginning of June 2022, but obviously too late for good notice to be given.

Residents may well have plans for their own celebrations to mark this incredible achievement by Her Majesty, and each and every one of us should feel proud to be able to witness it.

## Litter Pick

It is likely that we will be holding our annual litter pick on a date to be fixed during springtime on a Saturday morning between 10am and 12 noon. Please look out for details on noticeboards, the village website and social media. We anticipate that we may well be supported by our local Scout Group and if so we will start and finish from their hut and, as in the past, refreshments may be available. Please give us your support if you are able and bring along your children too. Unfortunately there does seem to have been an unreasonable and unacceptable increase in litter around the village. I am told by the volunteer who regularly collects in Highfield Road and the slip roads to and from the Paula Radcliffe Way that fast food cartons, cardboard coffee cups, cans and bottles account for most of the litter he collects. The chances are that those who deposit this litter do not read this newsletter, but just in case they do I would ask that you do not do it and that you put your litter in a bin or take it home and put it in the bin there.

I know many people around the village regularly pick up litter and whilst we do not necessarily know who you are we thank you for doing what you do; with special thanks to Trevor and Susan.

## Oakley Speed Watch Volunteers- See Page 7

Well, I think that is about it and it remains for me to thank everyone for doing what they do for this village. On your behalf I thank all Parish Councillors and Ann Paice, our Parish Council Clerk, for all of their hard work, all of our contributors to this Newsletter and to you for reading it.

Last but by no means least thank you to our Editor Bill Chalker who has once again put together another quality publication.

Kind regards Paul Phillips, Chair.



# Borough Council News

## Council Tax

The Council Tax Increase for 2022/23 has been set at 3.99%, this comprises of a core council tax rise of 1.99% and 2% adult social care. The budget for the next financial year was passed unanimously. This once again means that key areas such as buses, roads, social care and children's services have been protected.

## Extra Powers for Council to Enforce On Our Roads - Have Your Say

As part of the Traffic Management Act (2022), the Government will be giving councils the option to apply for powers to enforce against 'moving traffic offences'. Currently, only the Police can enforce against these offences.

Bedford Borough Council is considering acquiring these powers, and wants to hear the views of local residents, businesses and interested parties.

These powers would enable the Council to expand the work it already does enforcing against illegal and dangerous parking, and misuse of bus lanes. The Council Parking Services Team would carry out this enforcement work, as part of their current duties.

Other offences would be enforced where the appropriate signs are in place. These include one way streets, no U-turn allowed, no left/right turns, no entry, box junctions, as well as areas where cars are not permitted such as cycle lanes. To see the full list of offences, for further information and to have your say, please visit [www.bedford.gov.uk/mtoconsultation](http://www.bedford.gov.uk/mtoconsultation)

You can have your say online at [www.bedford.gov.uk/mtoconsultation](http://www.bedford.gov.uk/mtoconsultation), by emailing [highway.consultations@bedford.gov.uk](mailto:highway.consultations@bedford.gov.uk) or by writing to Traffic Operations, Room 109, Borough Hall, Cauldwell Street Bedford MK42 9AP. Hard copies are available on request via the Highways Helpdesk on 01234 718003.

Comments should be received by 18 March 2022 and may be published.

## Bedford Borough Council Launches Fly-Tipping Information Appeal

Bedford Borough Council has invested in new, portable CCTV cameras that they are deploying at fly-tipping hotspots around Bedford Borough.

The Council is using footage to help identify vehicles present in the vicinity of fly-tipping or individuals who may have information about fly-tipping so that enforcement action can be taken against the appropriate persons who are engaged in this activity. Fly-tipping is a criminal offence and can

be punished with a maximum fine of £50,000, or a 12 month prison sentence if convicted by a Magistrates Court.

The footage will be posted on the Council's 'Caught on Camera' webpage at [www.bedford.gov.uk/caughtoncamera](http://www.bedford.gov.uk/caughtoncamera). If you recognise a vehicle or an individual, you can let the Council know on that webpage. This will assist the Council in deciding if an offence has been committed.

Fly-tipping is a criminal offence which costs the Council thousands of pounds to clean up. It can also be a hazard to local people & wildlife and is a real blight on the environment.

## New Exhibition at The Higgins - Edward Bawden Exhibition: Artist Plantsman

29th January 2022 – 15th January 2023



Artist Plantsman, a new exhibition exploring influential British artist and designer, Edward Bawden (1903-1989), and his lifelong love of plants and gardens, opened at The Higgins Bedford on Saturday 29th January 2022.

Drawn exclusively from the Edward Bawden archive, this exhibition invites visitors to discover Bawden's love of plants and gardens through a wide range of his work, including early wallpaper designs, well-known prints, advertising campaigns and private commissions.

Exotic and favoured plants have been weaved throughout much of Bawden's work, with ivy tendrils wrapped around wallpaper and exhibition invitation designs, whilst architectural plants like gunnera, hosta and hogweed act as framing devices for images of gardeners and greenhouses.

From the grand gardens of Carthage and the botanical gardens at Kew, to Bawden's own gardens at his parent's home in Braintree and his beloved one-acre plot in Great Bardfield, visitors can see Bawden's passion for plants and gardens across decades of his work, featuring pieces that have never before been on public display.

Visitors will also be able to see The Bilstoe Garden Seat on permanent display. Bawden was commissioned to make it in 1956, resulting in a combination of tradition and modernity patterned with a spider's web-like design.

Artist Plantsman is free to visit and will run until 15th January 2023. Visit The Higgins Bedford website for more information at [www.thehigginsbedford.org.uk](http://www.thehigginsbedford.org.uk)

**Councillor Jon Abbott**

Telephone: 07784 549180

Email : [jonathan.abbott71@icloud.com](mailto:jonathan.abbott71@icloud.com)





**Voted No. 1 Salon in the UK**

### **Our Services**

Wash, Cut & Blow dry  
Restyle  
Balayage  
Colour (incl Correction)  
Ladies, Gents & Children  
Gents Skin fade  
Hair loss solution



Skincare specialists  
Facials  
Gels, Manicure &  
Pedicure  
Waxing  
Lashes & Eyebrows  
Weddings

Massage  
Make up, incl Bridal  
Semi permanent  
Makeup  
Tanning  
Ear Piercing  
Facial Aesthetics



Stockist of Premium Hair, Beauty brands, & gift vouchers  
Premium fragrances including Savile Row Men's Grooming  
designed at Hazel Kaye.  
Exclusive Savings.

**Book/Purchase Online**

40 High Street, Oakley, Beds, MK43 7RG    
Tel: 01234 826502, e: [hazel@hazelkaye.com](mailto:hazel@hazelkaye.com), [www.hazelkaye.com](http://www.hazelkaye.com)





Yey, we have finally re-opened! This term we have welcomed back our members past and new. It has been great to see our members mixing with their friends.

We also have a new addition to our youth club. Welcome Jules. Jules is a great asset to our youth club especially as she is superbly organised.

We have made cookies, chocolate gift bags for valentines and blew the dust of our equipment to play activities including table tennis, pool, tabletop hockey as well as crafts, gaming, and competitions. I would also like to take this opportunity to express our sincere thanks to our Treasurer Emma for stepping in whilst we have been in and out of lockdowns. Thank you, Emma.

Whilst we are talking about staff changes, I would also like to take this opportunity to **advertise for a new leader to**



**take over from myself from September 2022.** I have been running the Youth Club for quite a while now and due to my demanding job and having busy teenagers to run around, I am reluctantly stepping down. This is a great opportunity to do something great for the community and provide somewhere warm, fun, safe and enjoyable for our young members. If you are interested in running the youth group then please get in touch with the committee at [oakleyyouthgroup@gmail.com](mailto:oakleyyouthgroup@gmail.com).



I have been incredibly lucky to have great members and supportive parents over the years and I would like to say thank you as we could not have run for this long without you and, of course, the constant support we receive from the Parish Council.

We are proud of our little club and the opportunities it has given young people to have paid jobs in addition to us supporting young people from Lincroft with their Duke of Edinburgh award. We have a great community in Oakley and it has been a sincere pleasure to be part of it.

Dawn, Sara, Pat and Emma.





### **SPECIAL SERVICES & EVENTS COMING UP**

<b>Ash Wed 2nd March</b>	7.00pm	Methodist Circuit Zoom Service
	7.30pm	St Mary's Zoom service (*see website for link)
<b>Tues 15th March</b>	3.30pm	Messy Church for all- Oakley Methodist Church (OMC)
<b>Sun 27th March</b>	10.30am	Joint Mothering Sunday Service- OMC
<b>Sun 10th April</b>	10.30am	Joint Palm Sunday Service - St Mary's
<b>Weds 13th April</b>	6.30pm	Reflective Service- OMC
<b>Thurs 14th April</b>	6.30pm	Maundy Thursday Meal- St Owen's Bromham
<b>Fri 15th April</b>	10.00am	Good Friday Craft Workshop- St Owen's Bromham
	2.00pm	Good Friday Service- St Mary's
<b>Easter Sunday 17th April</b>	10.30am	Family Communion Service & Egg Hunt-St Mary's
	10.30am	Easter Sunday Communion Service- OMC
<b>Tues 17th May</b>	3.30pm	Messy Church for all- OMC

### **TEAS IN CHURCH**

Every summer St Mary's holds 'Teas in Church' on Sunday afternoons from 3.30pm to 5pm. Why not come along and enjoy delicious refreshments in beautiful surroundings, while supporting your local church? Visit our website for updates on the first date in 2022!



\*For more details on all our events visit  
[www.bromhambenefice.org](http://www.bromhambenefice.org) or  
[www.northbedsmethodist.org.uk](http://www.northbedsmethodist.org.uk)

### **CELEBRATING THE QUEEN'S PLATINUM JUBILEE**

On Sunday 5th June at 10.30am we will be holding a joint Platinum Jubilee Service in St Mary's for the whole village to celebrate and give thanks for the Queen's long reign.



Please do join us and the Parish Council on this special day.

### **CONTACTS**

St Mary's: Revd. Catherine Wilson: 01234 825665 [vicar@bromhambenefice.org](mailto:vicar@bromhambenefice.org)  
Church Wardens: Hilarie Worley 262166 & Graham Palmer 07710 462535  
Administrator Sarah: 07494 069540 [administrator@bromhambenefice.org](mailto:administrator@bromhambenefice.org)  
Oakley Methodist Church:  
Revd Chris Sandy: 01234 860464 [christopher.sandy@methodist.org.uk](mailto:christopher.sandy@methodist.org.uk)  
Church Steward: Jeanette Letch 825204





Royal Mail

# Reinventing stamps for the future

Over the coming months, you will notice that more of our stamps will start to feature barcodes.

Following a successful national trial we will now be adding unique barcodes to all our regular 'everyday' Definitive and Christmas stamps. Each barcoded stamp will have a digital twin and the two will be connected by the Royal Mail App. The unique barcodes will facilitate operational efficiencies, enable the introduction of added security features and pave the way for innovative services for our customers.

Definitive stamps are the stamps that will be very familiar to most people. They feature the profile of HM The Queen. The barcodes match the stamp colour and sit alongside the main body of the stamp, separated by a simulated perforation line. The new barcode is an integral part of the stamp and **must remain intact for the stamp to be valid.**



## Transition to Barcoded Stamps

Non-barcoded stamps will be phased out but will remain usable until 31 January 2023. Customers are encouraged to use their non-barcoded stamps before this date. Alternatively, non-barcoded stamps can be exchanged for the new barcoded version through Royal Mail's 'Swap Out' scheme.

The 'Swap Out' scheme will open on 31 March 2022. Forms will be available via a variety of channels, including local Customer Service Points; the Royal Mail website and via our Customer Experience team. Customers will be able to use a Freepost address. Further details will be announced shortly.



[Editors Note - Public Information Article]



## Oakley Educational Foundation

This Foundation exists to assist young people between the ages of 16 and 25, who live in the Parish, with grants towards the cost of books and tools, etc. in furtherance of their education.

Applications are accepted in the months of May and November and must be accompanied by receipts of purchase. Application forms can be obtained from the Clerk, Louise Tunley.

For further information, or for an application form, please contact Louise Tunley on 07917 462213, by post at 19 Goldington Road, Bedford, MK40 3JY or by email at [louise\\_tunley@yahoo.co.uk](mailto:louise_tunley@yahoo.co.uk).

## Oakley Speed Watch - Volunteers Needed

Even though no volunteers have been forthcoming from our recent plea for volunteers to join our speed watch team, we continue to try to operate twice each month, recently giving attention to Highfield Road, Pavenham Road and Lovell Road. Previous to that we were in Church Lane.



Maybe some of you did not see the article when we asked for volunteers to come forward, or because of all the demands of preparing for Christmas it slipped your mind, so I will renew our **PLEA FOR YOUR SUPPORT**. Provided we have enough volunteers, one hour a month is all that we ask and yes, you would be helping the Speed Watch Group, but more importantly you would be helping your village and you would be meeting new friends – some of us might be getting on, but we are okay really!! In mid January 2022 around 11am the speeds of two of the cars, which were noticeably slowing down, were recorded at 38 and 36 mph coming into the village. This is not acceptable in a 30 mph limit and they were only slowing down because their speeds were being recorded

Are you happy with these speeds? I most certainly am not particularly at times when our children or grandchildren might be going to or from school or indeed going out to play. Let us make sure that our village is as safe as it can be and it really would be great if two or three or more volunteers could come forward and ensure the continuation of Speed Watch. If you require further information please contact me on 07968 122301 or paulphillips65@gmail.com

Paul Phillips



GARDEN WALLS TO COMPLETE EXTENSIONS

BRICKWORK | POINTING | DRAINAGE | WINDOW / DOORS

ALTERATIONS | GARAGE CONVERSIONS | KNOCK THROUGH

UPVC WINDOWS & DOORS | PLASTERING | CHIMNEYS | +MORE



WWW.BEDFORDBRICKLAYING.CO.UK



07732 428 993





Oakley Sports & Social Club would like to extend a belated warm welcome to our new Stewards Tom Mackay and Jasmine Keen, who pick up the reins following the retirement of Mick and Barbara Hewitt last November. Although not from Oakley but neighbouring Clapham, many local members will know and recognise Tom and Jasmine as they have been the landlords of the Fox and Hounds, Clapham since 2020 and by all accounts have turned it

into a very successful local pub!

Jasmine has a wealth of experience in the hospitality trade having been employed in previous pubs and hotels for several years whilst Tom was a tradesman as well as a pub Landlord. Tom has hung up his tools to concentrate full time in the hospitality industry and on running Oakley Sports & Social Club.

Both have a passion for trying new food and drinks whether in restaurants or their own kitchen and furthermore Jasmine enjoys growing fruit and vegetables, she said "I'm a big believer in sourcing local produce and you can't get more local than your own garden"

Tom said "We see Oakley Club as a great community facility and an exciting challenge. It was something we really wanted to do and now we have that opportunity. We look forward to welcoming both old and new members, supporting the various associations already using the facilities and we intend to bring in further community minded activities, functions and new menus. We want to take this club onwards and upwards"

The Committee are finding it a pleasure to work with Tom and Jasmine and they have every faith that OSSC will continue to grow and prosper under their Stewardship.

Robbie Bays

## Spot and protect yourself from scams

It can be hard to tell if something is a scam - that is why they work and cost us £470M last year.

### How to spot a scam

Ask yourself the following questions. If you answer yes to any of them, there's a good chance it's a scam.

#### Have you been contacted out of the blue?

Cold calls or unexpected emails or messages should raise suspicion, especially if you're asked to give personal or payment details.

#### Have you been asked to share personal details?

Never share your personal details with anyone if you cannot confirm they are who they say they are.

#### Are the contact details vague?

Scam websites often Vague contact details can be

a PO box, premium rate number (starting '09') or a mobile number.

#### Are you being asked to keep it secret?

It is important you can discuss any agreements with your friends, family or advisors.

#### Is the offer too good to be true?

Scams will often promise high returns for very little financial commitment. They may even say that a deal is too good to miss.

#### Are you being pressured to make a decision?

Fraudsters often try to hurry your decision making. Do not let anyone make you feel under pressure - it is OK to take a break and think things through if you are not sure.

#### Are there spelling and grammar mistakes?

Emails or messages littered with spelling and grammar mistakes are a scam giveaway.

For more information go to

<https://www.which.co.uk/consumer-rights/scams>



### Steve's Snippet No.55

A Theme Continued... Anomalies in usage (and abuse) of (our) language in modern times...

I have noticed the addition of, "of", where it is neither needed nor (not "or", please) logical to include it: is this becoming too big "of" a problem?

I think I have an answer to why the rogue word is inserted needlessly in this way: it is inserted because there are discarded and homeless "of"s, evicted from other sentences, a couple blocks down the road. Not, "couple of blocks", note.

I just wanted to share that with you. I feel so much better now.

On a positive note:-

If we are going to abbreviate language then there could be environmental advantages in going full text-speak.

Ink can be saved in printing and energy can be saved throughout the entirety of information technology. The subtleties and accuracy of communications may suffer, but who cares.

### Steve's Snippet No.56

Something different for March.

You may have noticed that a popular game has been getting some publicity recently.

Here is our version: DIY-dle. We have started you off with the first 2 lines, so you just have to complete the rest.

#### Examples

**W** E A R Y

The letter **W** is in the word and in the correct spot.

P **I** L L S

The letter **I** is in the word but in the wrong spot.

V A G **U** E

The letter **U** is not in the word in any spot.



**Meetings will start again in  
Spring and Summer  
starting in April.  
Times and Dates to be  
finalised shortly**

## How to help local homeless people



*Have you ever walked past someone sleeping rough and not known how to help?*

Homelessness is a big problem across the UK, and sadly that includes our local area.

In Bedfordshire and the Milton Keynes area there's a lot of amazing work going on to help homeless people, but there are simply not enough affordable homes. As well as those sleeping rough, there are many hidden homeless people who are also sofa-surfing or stuck in temporary accommodation, often lacking basic essentials for daily life.

### How to help

Christian Coley (pictured) used to be homeless and is now being supported by Bedfordshire charity Emmaus Village Carlton. Along with others from Emmaus, he now volunteers every week to help local rough sleepers.

We asked Christian to answer some questions about how people can help...

### If I see someone sleeping rough, what can I do?

"You can help connect someone with local services by calling Streetlink on 0300 500 0914 or by downloading their app (but if someone needs urgent medical assistance or is in danger, do call 999). Loneliness is also a big problem so if you can, please stop and talk. You could ask if there's anything they need, like a hot drink, something to eat, or warm clothing."

### How do I find help locally, for someone who's at risk of becoming homeless?

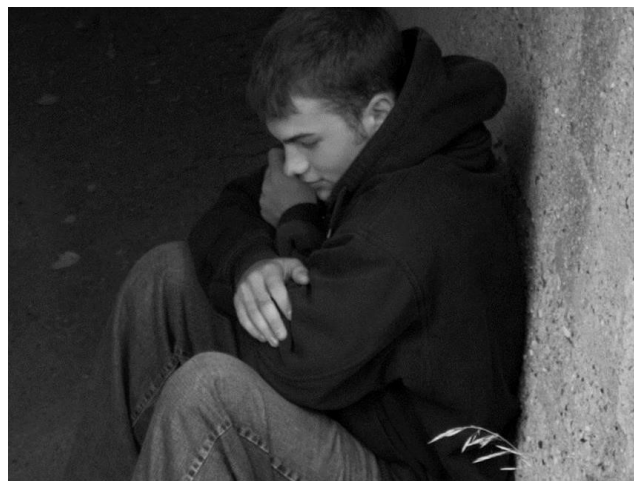
"I'd recommend two useful websites which list local organisations and services that can help. For Bedford borough [www.bedfordhomeless.org.uk](http://www.bedfordhomeless.org.uk) and in the Milton Keynes area [www.mkhp.co.uk](http://www.mkhp.co.uk)

"Emmaus Village Carlton is the charity that's helped get me back on my feet. Based just outside of Carlton, north Bedfordshire, it offers a home, support, meaningful work and training to people who are homeless or are at risk of becoming homeless. If you know someone who Emmaus might be able to help, you can call their Support Office on 01234 720826.

### How can I help a local homelessness charity?

"There are many great homelessness organisations in our local area, which all need support. The charity that's helped me is Emmaus Village Carlton. You can help by visiting their three charity shops and bistro on School Lane, Carlton (open Wed – Sat 9.30am – 4.30pm / Sun 10am – 4pm) and by passing on your unwanted things for re-sale. You can also donate online and find out other ways to help, on their website:

[www.emmaus.org.uk/village-carlton](http://www.emmaus.org.uk/village-carlton)





# Oakley Village Hall - have your say

Do you hire the Village Hall? Do you attend classes or functions there? Do you vote there?

Join our committee and have your say on how the Hall should develop and how it is run.

Find out more from our Secretary:  
Ruth Bender | [r.bender@cranfield.ac.uk](mailto:r.bender@cranfield.ac.uk) | 07941 679204



The Cafe at W&H Peacock is

# OPEN

View the salerooms for our upcoming auctions and then relax with a coffee and a slice of cake.

Our unique cafe in Bedford Auction Centre with free wi-fi comfortably seats over 100 customers. We serve cooked breakfasts, paninis and sandwiches, light lunches and snacks plus a range of hot and cold drinks.



Eastcotts Park,  
Wallis Way,  
Bedford,  
MK42 0PE  
01234 266 366

Visit  
[www.peacockscfe.co.uk](http://www.peacockscfe.co.uk)  
for more details on our opening  
hours and to view our full menu.

## W&H PEACOCK AUCTIONEERS & VALUERS



## Auction Sales & Valuations

Valuation, collection and auction service of individual items through to complete property and commercial clearances.

Call for a free no obligation quote or email [info@peacockauction.co.uk](mailto:info@peacockauction.co.uk)

SALE ENTRIES NOW INVITED  
[www.peacockauction.co.uk](http://www.peacockauction.co.uk)

Eastcotts Park,  
Wallis Way,  
Bedford, MK42 0PE

# 01234 266366



# Linch Furlong



December was cold and wet. Linch Furlong was very wet and there was a lot of moss around particularly by the southern edge.

January was drier and there were some frosts. The first sign of life was the catkins on the hazel trees.




The moss was still there and some evidence of plant growth. There were very few birds singing and the area was regularly patrolled by the Red Kite and the Falcon. At last towards the end of January there was some signs of plant movement - a few daisies raised their heads.

In February with some warmish days there were some signs of the Ash tree black buds swelling and the Blackthorn buds fattening up, ready to hopefully burst out with blossom. Many more birds were singing possibly to claim their territory and perhaps to attract a mate. Certainly the blackbirds were courting. There were long tailed tits and blue tits piping up. I was down there on Monday and I saw cowslips unfolding their leaves and the dog daisies were starting to peep up. However, by now the violets were out last year but there has been no sign of them yet. I am still hoping. If we have some warm days, and with longer daylight hours, we will be able to see much more growth.

In March I will be looking for the blackthorn to be in bloom so that I can pick sloes in the autumn to make sloe gin. Hopefully the violets will gladden my heart. Many more people are enjoying our countryside by walking here and along the river either to do a circuit to Highfield Road or to go to Browns Wood.

Pat Olney




**SHARNBROOK  
MILL THEATRE**

Your award-winning, local theatre

Patrons: Joanne David & Hugh Laurie CBE


Registered charity 242104



Theatrical crown logo

**Saturday 12<sup>th</sup> March, 7.30pm**

**The World of Gilbert & Sullivan with The Wandering Minstrels**



Enjoy a light-hearted evening of songs and scenes from Gilbert & Sullivan's comic operettas. The Wandering Minstrels, a highly-accomplished group of singers and their concert pianist, combine the immortal wit of W.S. Gilbert with the enchanting music of Sir Arthur Sullivan performed in period costume and traditional style.


**Tickets £16** (+ £1 booking fee) [www.sharnbrookmilltheatre.co.uk](http://www.sharnbrookmilltheatre.co.uk)  
or Pick-a-Lily, Florists, Sharnbrook, in person

---

**Wed. 6<sup>th</sup> – Sat. 9<sup>th</sup> April, 7.30pm**

**THE LAST FIVE YEARS - A Musical**

An emotionally powerful and intimate musical about two young New Yorkers who fall in and out of love over the course of five years. Cathy tells her story backwards while Jamie tells his chronologically. A stunning show from Jason Robert Brown, who also composed *Parade* and *The Bridges of Madison County*.



**Tickets: £14 Wednesday/Thursday, £15 Friday/Saturday**  
(+£1 booking fee)

---

**'LUNCHES AT THE MILL'**

Wednesday 13<sup>th</sup> April, 12 noon for 12.30pm  
**"The Panacea Society and their Garden of Eden"**

Wednesday 11<sup>th</sup> May, 12 noon for 12.30pm  
**A History of the Romany People**


Both preceded by a two-course lunch, tea/coffee.  
Wine & soft drinks available - Raffle

Ticket for each event  
£17.50  
01933 356974  
virginiapope@icloud.com  
Fundraising events for The Mill Theatre

---

**Wed. 15<sup>th</sup> – Sat. 18<sup>th</sup> June, 7.30pm**

**The 39 Steps**



Two spies, a blonde and a guy go North by Northwest in this fast paced whodunit packed with non-stop laughs, an onstage plane crash, handcuffs and some romance

**Tickets: £12 Wednesday/Thursday, £13 Friday/Saturday** (+ £1 booking fee)  
from [www.sharnbrookmilltheatre.co.uk](http://www.sharnbrookmilltheatre.co.uk) or  
Pick-a-Lily, Florists, Sharnbrook, in person

**[www.sharnbrookmilltheatre.co.uk](http://www.sharnbrookmilltheatre.co.uk)**

## College Farm

We have just about survived storm Eunice at College Farm. Plenty of slates are off the older roofs and a few roof sheets missing but given all the hype from the media, I was expecting it to be much worse. Hopefully I have not jinxed it and storm Franklin passes tomorrow without too much disruption.

Winter is usually a quiet time for us but due to a dry January this year we have been able to get ahead on a lot of jobs we would not normally be able to do. Couple this with cows calving and many meetings and discussions on the new Agricultural Policy, the first part of 2022 has flown by.

Farming at the moment is facing huge pressures from a number of directions; subsidy payments are reducing, we are being encouraged to enter into environmental schemes, the Government want us to farm in a greener way. Our input costs have had massive inflation in the last 6 months. For example this time last year fertiliser was £270 per tonne, today it is £680 per tonne. If you can get it, fuel is 30% more than 12 months ago and machinery costs are ever increasing.

Luckily, we are receiving a higher grain price than we have for many years. Unfortunately this is only helping to offset the increase in costs, so basically, we are where we were a year ago, it is just costing a lot more money.

These changes are very daunting. If I was 25 years older I am not sure if I would be carrying on. However, as I am only 36 I have a few years to go yet so I am hoping these changes will bring many opportunities and I am spending a lot of time looking into solutions to be able to farm in a more resilient, greener and profitable way. There are ways to do this and it involves doing things differently to the generations before. I hope to be less reliant on expensive pesticides, make more use of organic manures to improve our soil fertility and am looking into non farming based diversification opportunities.

When I was younger all I wanted to be was a farmer. To kickstart my farming career I became an agricultural contractor and I now feel my job role is changing to a land manager. I am nervously excited about where it might lead to.

Time flies when you are enjoying yourself. Two years ago we bought 7 calves to hand rear and they are due to have a calf of their own any day soon.

Hopefully in my next article I will be able to tell you that Dotty, Dorothy, Cinderella, Princess Belle, Elsa, Ariana and Anna are all down the field

with their calves at foot. And yes, they were all named by our daughter Emily who was 2 at the time!

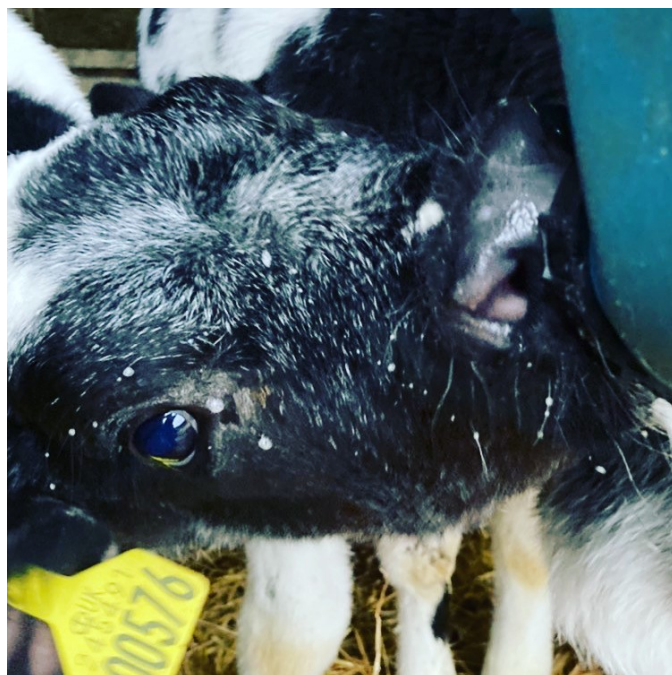
## Farmer wife duties at College Farm

Gone are the days of the 'stereotypical' farmer's wife where it is believed they spent most of the time in the kitchen baking and making food for the farmer and workers. I cannot say I ever fitted that mould but these days farmers wives get as stuck in as their husbands. When I am not working in marketing, or art, you will often find me tending to our cows. We hand rear approximately six per year to increase our herd. They are very tame and have their unique personalities.

Farming is not just about being practical though, as Henry has mentioned you do need to have a business mindset, as all business owners do, and think about how you can make the best return with the opportunities you have. Diversification is key to surviving these days so we do often have lightbulb moments. A few years ago we looked at turning a barn into a nursery and got planning permission, but the stipulations the planners added to the approval meant the project cost was no longer viable.

On a separate note my art business has really picked up in the last six months. For those that shop at Milton Ernest Garden Centre, you have probably seen my tractor homeware range which is now available to buy there. I also sell online so feel free to check out my website [ljcreativestudios.com](http://ljcreativestudios.com). I am continuing to add to my range and am launching a new collection this year so watch this space. Life is never dull at College Farm

Henry and Laura Saunders





## Oakley Village Show 2022



Where has the time gone? Another year ruled by Covid! The one thing that a lot of us discovered during the first difficult year was a newly acquired love of our gardens and in some cases allotment vegetable production. Well you will again this year have the opportunity to demonstrate your achievements at the Oakley Village Show. It only seems yesterday that we were announcing the 2021 Village Show which was held in September last year. We had another successful show held in The Oakley Village Hall where entries were received from gardeners, cooks, crafters, photographers and artists of all ages. The most popular classes displaying home grown produce were the tomato and runner bean classes, firm favourites. The home baked brownies and homemade jam classes displayed mouth watering cookery skills. The "lockdown project class" showed just how many talented crafters we have in the village!

One comment which was heard repeated by many people who visited the show was **"we would have entered if we had only known it was on"**. Well for all of you living in Oakley please take this opportunity to put the date of this year's show in your diary - the **18th September!** With classes for adults and children alike, of every ability, there will be a class for everyone. The summer Village Newsletter will contain the programme of events and the entry form. However for those of you who are much happier with Facebook you can follow the announcements for the show via the Oakley Village Show Facebook page.

Julia Nicholas

## An update from the Oakley Band of Bell Ringers



The Oakley Band of Bell Ringers are so pleased to be back ringing the bells of St Mary's as normal and we hope you are enjoying hearing the bells ringing out over the village! We recently rang for an extended session in honour of the anniversary of our Queen's accession to the throne.

During the time we were away from the bell tower, we very sadly lost two of our experienced bell ringers. Also, another of our long-standing members has moved away from the area. A big loss to the band. So, as we gradually return to normality, we are seeking new members to join us. We are a very friendly bunch and are happy to teach those new to bell ringing and encourage former ringers who may feel a bit rusty.

We practice on Friday evenings from 8pm to 9:15pm and ring on Sunday mornings before the services at the church. If you would like to come along on a practice night to see what it's all about and to have a go, please contact our

Tower Captain, Bill Sellars on 07980 745292 or email [thesellars@btinternet.com](mailto:thesellars@btinternet.com).



Sales, Lettings & Auctions



MAYFAIR  
OFFICE GROUP

move  
withUS



BRITISH  
PROPERTY  
AWARDS

2021



GOLD WINNER

ESTATE AGENT  
IN BEDFORD

Have you seen... We **won!**  
For a winning service, **talk to us.**

01234 327744 | [sales@laneandholmes.co.uk](mailto:sales@laneandholmes.co.uk) | [laneandholmes.co.uk](http://laneandholmes.co.uk)



*Bring your  
garden  
to life!*



**OAKLEY**  
BUILDING & LANDSCAPES



Artificial Grass | Building & Landscaping  
Driveways, Paths & Patios  
Timber & Composite Decking

☎ 01234 915049    ✉ info@oakley-landscapes.co.uk  
☎ 07803 749340    🌐 www.oakley-landscapes.co.uk



## Oakley Pre-school News



Finally, after many delays, the new pre-school building should be in situ by the time this newsletter is published. The much anticipated day of arrival is now scheduled for 22nd February 2022.

At present we have 41 children on our roll and we hope to be able to increase the offer of places and hours we offer, as soon as we are able to operate from the building. Subject to any further delays, this should be from the summer term 2022.

During the groundworks stage of the build, our pre-school garden has been greatly reduced in size. We are looking forward to being able to get into a bigger outdoor space and start our Forest School activities, planting our wild flower meadow and being able to access all the risky play activities in our outdoor environment, including reuniting the children with the pirate ship, giant tractor tyre and trapeze!

We have been able to access free trees from the Woodland Trust. These should be arriving in a few weeks and have been carefully chosen (with the help of Patrick Knight) to enhance the new site.

We are looking forward to the spring with new beginnings for this well established pre-school and hope that the changes we are making will be both eco-friendly and help to serve the needs of all families within our community.

Our Name a Brick Appeal is ongoing and you can continue to order a brick, where you can record your involvement with pre-school by purchasing a brick that will be permanently displayed on the interior wall of the new entrance hall.

Please see the Oakley Pre-school Name a Brick Appeal on the 'New Build' page of our website for an order form. <https://www.oakleypreschool.com/new-build>

Alternatively you can give us a call at pre-school to discuss your order.

### Admissions

If you would like to register your child for a place at pre-school, please contact us on 01234 826452 or by email: [info@oakleypreschool.com](mailto:info@oakleypreschool.com)

Our website is: [www.oakleypreschool.com](http://www.oakleypreschool.com)

Follow us on Facebook to keep up with our latest news and events.

For information on funding you can see details on our website with a link to Childcare choices or alternatively you can contact the Family Information Service 0800 023 2057

Sally Martiello

## AMIGO

After some considerable thought and discussion with others, I have decided, because of Covid, not to proceed with the Coach trip that was to have taken place on Thursday 23rd June 2022.

I am very grateful for the support and encouragement shown by many people in coming on these trips. I have today spoken with our guide Charlie de Wet and she has asked me to pass on to you her thanks for being so appreciative of her efforts in guiding us through parts of London. Charlie has told me that she will be happy to hear from me with regard to any possible trips in the future.

I have been organising these trips for over ten years and I am now finding it difficult to cope with all the arrangements that have to be made in order for the events to take place. **If anyone would be pleased to help me next year, I would be grateful.** Otherwise the trip next year will not go ahead. Please get in touch.

I would add that Amigo activities are taking place as normal.

- A very enjoyable evening was spent on Tuesday 25th January when the film "The Personal History of David Copperfield" was shown.
- A light hearted quiz hosted by Sue Brecknock is taking place on the 22nd February at Oakley Methodist Church beginning at 7.30 p.m.
- The Bedford Observatory visit that is taking place on Tuesday 8th March is full.
- David Fowler is giving a talk on the 26th April. He is always very interesting. Further details closer to the time.

Please contact me on

email [jwdixon30@gmail.com](mailto:jwdixon30@gmail.com)

or phone me on 01234 824959.

John Dixon

## Clapham Belles WI

### Going from Strength to Strength



Clapham Belles WI has just reached its Third Birthday and we are growing and gaining strength as more ladies from the community are joining us. We are very keen to welcome new members of all ages to our group and we welcome your input into our future development. The committee is open to every member and new ideas are always welcome.

Since the lifting of restrictions we have been able to resume our regular meetings in the village hall but also continue to hold some of our additional clubs over Zoom, such as the monthly book club. Our main meetings are held on the 2nd Friday of each month and start at 7.30 pm. The meetings are held in the Clapham Village Hall.

Our programme for 2022 is confirmed up to July, subject to any Covid regulations amendments and/or impacts on the speakers. The programme is as follows:

14th January	Indoor Kurling plus attendance of an assistance dog
11th February	Bedford Borough Council Recycling
11th March	Benefits of fit steps and a taster session
8th April	AGM (Members only meeting)
13th May	Cyber and Fraud Security
10th June	Octopus for a Preemie UK Project
8th July	"You cannot be serious" .... Tales of a Wimbledon Umpire 1988 – 2021

Along with the book club we also have a monthly coffee morning which visits local establishments. This provides not only an opportunity to support local businesses but also enables us to keep in touch with our members. In February we are also starting up a monthly craft club to develop and share skills and knowledge and support some community projects.

If you are uncertain if the WI is for you, you can always join a meeting as a guest, we would love to see you! We do charge £4.00 for a visit which includes a raffle ticket, a drink and importantly a piece of cake. You are also very welcome to join us free of charge at one of the coffee mornings.

For details of membership or joining as a guest, please email [secretarycbwi@gmail.com](mailto:secretarycbwi@gmail.com) or [presidentcbwi@gmail.com](mailto:presidentcbwi@gmail.com)

## Introducing the Anne Robson Helpline - If you or someone close to you is dying, you can talk to us.



At the Anne Robson Trust we aim to be there to listen to anyone who is struggling with the imminent death of someone they care about. We know that facing the end of life can leave you isolated and alone.

Calls are free and confidential – **Call us on 0808 801 0688**

Being able to access support whilst a loved one is dying is really important for a number of reasons. Gaining knowledge of what may happen towards the end and having a sense of 'preparedness' helps both the person dying and their family gain as much control as possible.

Please visit [www.annerobsontrust.org.uk/helpline-service](http://www.annerobsontrust.org.uk/helpline-service) to find out more.





**BEDFORDSHIRE POLICE**  
Protecting People and Fighting Crime  
*Together*

## New Community Police Officer

I am writing to introduce myself; I am Mark HANCOCK your local Community Officer. As part of my role, I have the responsibility to cover Wootton, Bromham, Biddenham, Clapham, Great Denham, Kempston Rural, Oakley, Pavenham, Stagsden, Stevington and Turvey in relation to community concerns.



I have previously been a response officer in Bedfordshire police and have also worked in Bedfordshire police domestic unit "EMERALD", meaning I have had experience in working with vulnerable people in difficult situations. I have always liked to talk to people, and I enjoy looking after the community and making people feel safe. I feel that my previous job roles, as well as my life experience, has provided me with skills that I can use in my role in the community within Bedfordshire police.

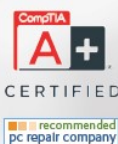
I am patrolling the area on a regular basis, and I would love to see more of you out and about within your areas and at future events. I am very approachable, so if you see me around, please come and talk to me, as I am always keen to hear what's been going on. One way to inform us about the issues arising in your area, is to complete 'Have your say surveys' at <https://www.surveymonkey.co.uk/r/BedsPoliceHaveYourSay> or the QR code below, which decides the priorities throughout the year. Currently, our community priority is combating speeding, however, depending on data, this is subject to change.

You may see us walking about on patrol or see our social media posts about how to keep yourselves safe, but we still need your help. If you see anything that looks suspicious, please report it, by calling 101 or use the online reporting tool at: <https://www.bedfordshire.police.uk/report>. It's very important that you tell me what's going on, so that we can make a difference within your community.



# Oakley.IT

maintain . IT  
repair . IT  
train . IT



**Jan Rymarz** – Principal IT Technician / Trainer

Fast PC and Laptop Repairs  
Clear and Friendly Training  
Fast and Efficient Service

Years of experience and services covering everything!

A few recent customer comments

"Great service"  
"Trustworthy & reliable"  
"Efficient & Affordable"  
"Highly recommended"



# 07401 250 118

help@oakleyit.co.uk | www.oakleyit.co.uk





David Russell Bespoke Builders Ltd are an expert team of building contractors who faithfully serve Bedfordshire and surrounding area.

When you need professional and dependable building services in the Bedfordshire area, call David Russell Bespoke Builders.

We serve domestic and commercial clients and are dedicated to excellence, completing all of our projects to the highest possible standard.

**TRUST DAVID RUSSELL BESPOKE BUILDERS**

**WITH YOUR DREAM PROJECT**

**WITH YEARS OF EXPERIENCE IN ALL AREAS OF TRADE, YOUR  
CONSTRUCTION PROJECT COULDN'T BE IN BETTER HANDS**

**Contact us on :**

**Email : [info@davidrussellbuilders.co.uk](mailto:info@davidrussellbuilders.co.uk)**

**Telephone : 07982663383**

Follow us on instagram @davidrussellbespokebuildersltd and on facebook @David Russell Bespoke Builders



**NFB**  
National Federation of Builders





# Coffee Morning

## Everyone Welcome



Following our very popular November and January Coffee mornings in the Methodist Church, we realised there was a need for somewhere for people in the village to get together to chat in a comfortable environment.

We have therefore started running weekly Coffee Stop sessions on **Thursday mornings from 10:00 - 11:30 in the Methodist Church**. Everyone is welcome to just drop in and enjoy a drink and something nice to eat whilst they have a chat with whoever else is there. All monies raised will be given to the Karibuni Trust, providing education for children in Kenya.

We look forward to meeting you!

Jeanette Letch

# WHITE'S Lawnmowers & Garden Machinery

Sales ~ Service ~ Parts ~ Hire  
Briggs & Stratton Service Centre

**STIHL** **MTIGA** **AL-KO**



**LAWNFLITE** **MTD** **Indespension**  
...& many more

LARGE SELECTION FOR ALL YOUR GARDENING NEEDS

**01234 826066**

**info@whites-online.co.uk**

[www.whites-online.co.uk](http://www.whites-online.co.uk)  
College Farm, Oakley, Bedford, Bedfordshire, MK43 7RX

## Phantom Sprayer

There are a few people who still allow their dog to defecate on the pavements and fields, I wish they would join most of us who pick up in a bag and dispose of in a bin – there are plenty about the village and it is not hard.

I do look around the pavements fields and greens and think how much cleaner they are now and how much more pleasant to walk around, but there are still a few who ignore the responsibilities that go with owning a dog.

There are a lot of dogs in Oakley. If you consider that most dogs produce at least two piles a day, that is at least fourteen every week for every dog – some do more. I have one such mess sprayed on Ruffs Furze Green at least three weeks ago still in almost the original state, so just imagine if every dog mess was left. With the number of dogs in the village, we would be almost knee deep in the stuff, and our walks would be so full of pooh hazard, because of the chance of us or one of the children treading in it and carrying it home.



Children frequently play on all our greens. This is lovely, they climb trees play football, cricket and do all the things children enjoy and that help them to develop a character. Please, please you few who ignore the pleas then this time just get into a good habit and join in with the majority who object strongly to what is left behind - **just clean up after your dog.**



## Changes were made to The Highway Code on Saturday 29 January 2022.

### People crossing the road at junctions



- when people are crossing or waiting to cross at a junction, other traffic should give way
- if people have started crossing and traffic wants to turn into the road, the people crossing have priority and the traffic should give way
- people driving, riding a motorcycle or cycling must give way to people on a zebra crossing and people walking and cycling on a parallel crossing

### Walking, cycling or riding in shared spaces



- not pass people walking, riding a horse or driving a horse-drawn vehicle closely or at high speed, particularly from behind
- slow down when necessary and let people walking know they are there (for example, by ringing their bell)
- remember that people walking may be deaf, blind or partially sighted
- not pass a horse on the horse's left

### Positioning in the road when cycling

- riding in the centre of their lane on quiet roads, in slower-moving traffic and at the approach to junctions or road narrowings

- keeping at least 0.5 metres (just over 1.5 feet) away from the kerb edge (and further where it is safer) when riding on busy roads with vehicles moving faster than them



### People cycling in groups

- should be considerate of the needs of other road users when riding in groups
- can ride 2 abreast - and it can be safer to do so, particularly in larger groups or when accompanying children or less experienced riders

People cycling are asked to be aware of people driving behind them and allow them to overtake (for example, by moving into single file or stopping) when it's safe to do so.

### Overtaking when driving or cycling



You may cross a double-white line if necessary (provided the road is clear) to overtake someone cycling or riding a horse if they are travelling at 10 mph or less (Rule 129).

- leaving at least 1.5 metres (5 feet) when overtaking people cycling at speeds of up to 30mph, and giving them more space when overtaking at higher speeds
- passing people riding horses or driving horse-drawn vehicles at speeds under 10 mph and allowing at least 2 metres (6.5 feet) of space
- allowing at least 2 metres (6.5 feet) of space and keeping to a low speed when passing people walking in the road (for example, where there's no pavement)

Wait behind them and do not overtake if it's unsafe or not possible to meet these clearances.





## ELITE FLAT ROOFING SERVICES EXPERTS

**Over 20 years combined experience.**

**You can rest assured knowing your roof is in safe hands!**

### SERVICES



**EXTENSIONS/NEW BUILDS**

**SHED ROOFING**

**GARAGE ROOFING**

**PORCHES/DORMER**

**SCHOOLS**

**INDUSTRIAL & MUCH MORE!**

Based in Bedfordshire and also covering  
surrounding areas.

All work fully backed with a 10-20 year guarantee.  
Please contact us for a free quotation!



#### EMAIL

[info@lpeliteroofing.co.uk](mailto:info@lpeliteroofing.co.uk)



#### WEBSITE

<https://lpeliteroofing.co.uk/>



#### PHONE

01234 825927  
07809 127531

## Oakley Allotments

It is that time of year when we start to look forward to sowing seeds ready for the new spring, but we must be patient. It is too early, and winter weather can still return, with temperatures low enough to devastate early sowings.

At the moment, temperatures are higher than average for February and it has been very dry, although as I write this, Storm Dudley will probably deliver the moisture deficit and is due to be followed quickly by Storm Eunice. I hope the accompanying winds will leave our allotments free of any damage: a post-storm inspection at the weekend will tell all.

I am inviting allotment tenants to contribute their thoughts and experiences to this newsletter over the next issues. Here is Karen Jackson's contribution for this issue:-

*So far February has mostly been a cold and blustery month making allotment visits difficult at times, but there are subtle signs that spring is not too far off. Spring bulbs are pushing through the soil and bird song fills the air. The allotments really are a peaceful place to be, especially when the sun makes an appearance.*

*With every visit I greedily eye up the rhubarb patch, watching with delight the first stems appearing. It will not be long before the first crumble of the year and I shall celebrate with custard.*

*Overwintering broad beans are coping well with the strong winds under a cloche, and garlic, planted out in November, is finally through and growing well. With spring on my mind I must remember it is too early to get sowing really underway, however tempting it may be, although some crops benefit from an early start, such as hardy broad beans direct under a cloche, chilli peppers (will need heat for successful germination) and onions from seed.*



*I have learnt from experience not to sow tomatoes indoors until late March onwards to avoid having trifids to contend with, it is amazing how quickly they grow once they get going! I have decided to give asparagus a go from seed this month after being inspired by other plot holders' successes.*

*That is about it for seed sowing this month, hopefully calmer weather will arrive soon.*

Thank you Karen.

We have no allotments available at the moment and all of the allotments are being worked, or work is being planned to commence as soon as weather allows. Elsewhere on the field we are planning a few maintenance projects. Into our twelfth year now, we are finding that fence and gate posts have rotted and will need replacing.

My own allotment is in need of similar maintenance, with raised beds and fence posts in need of attention. The raised beds will be removed gradually as we are going to see how ground-level beds perform, promising us a bit more growing space.

If I have a shed left after these storms I plan to extend it and renew the roof – I will let you know how that goes in the summer issue.

Steve Nicholas

## Almond Garage Doors Ltd



- Servicing Bedford & Milton Keynes
- Spare Parts (including obsolete makes)
- Existing Doors Automated
- EMERGENCY Call Out Service
- New Sales & Installations (Free Quotations)



01234 828953

info@almondgd.co.uk

Fax: 01234 826024

College Farm, Oakley, Beds, MK43 7RX

[www.almondgaragedoors.co.uk](http://www.almondgaragedoors.co.uk)



# Oakley Rural Day Centre

Oakley Rural, The Old School, Lovell Road, Oakley, Beds, MK43 7RX

Tel: 01234 824935 Mobile: 07733 227374

Email: [oakleyruraldaycentre@yahoo.com](mailto:oakleyruraldaycentre@yahoo.com)

Web: [www.oakleyruraldaycentre.weebly.com](http://www.oakleyruraldaycentre.weebly.com)

Registered Charity No: 1060283



## NEWSLETTER Spring 2022

**Welcome** to our latest Newsletter. If anyone has access to the internet please visit our website, [www.oakleyruraldaycentre.weebly.com](http://www.oakleyruraldaycentre.weebly.com) The site is updated regularly with the latest news from the centre.

We also have a **Facebook** page for anyone who has a **Facebook** account. This will be updated with the latest news and photographs of events at the centre. The **Facebook** page can be found at [www.facebook.com/oakleyruraldaycentre](https://www.facebook.com/oakleyruraldaycentre) We are also producing articles in various publications throughout Bedford and surrounding areas to raise the profile of the centre.

### DAY CENTRE

It's been a long hard road through the covid pandemic but we are pleased to say that the Day Centre re-opened in September to the delight of our clients and staff. The joy of seeing our clients interacting with their friends and involved in various activities together is great to see.

Although we have a few safety restrictions in place including pre visit lateral flow tests our aim is to make the clients day as normal as possible.

Our Day Centre provides our older people with a place where they can make friends in a warm and comfortable atmosphere. A range of activities including crafts, entertainment, quizzes and good old conversation are at the heart of our day.



We serve freshly prepared home cooked lunches together with tea, coffee and toast at the start of the day with beverages throughout. The Centre is open Tuesday, Wednesday and Thursday.

For details of costs and advice please contact Lynne on **01234 824935** or **07733 227374**.

**Enquiries welcome from Bedford and surrounding villages in North Bedfordshire.**

### ACTIVITIES

Since the turn of the New Year clients have been involved in various activities. We made bird feeders from peanut butter smeared on pine cones dipped in seed. It was great fun watching the squirrels getting their fair share! We have had a Burns night, Chinese New Year and Valentines themed week.

Other activities have included various interactive word games, card games and Triominos and of course Bingo!

We are in the early stage of planning a Queens Platinum Jubilee indoor street party for June which all the clients are really looking forward to.

## R J GASCOYNE

### THE PLUMBING, HEATING AND GAS COMPANY

Boiler changes, system upgrades, bathrooms, fault finding, servicing, maintenance, gas safety & landlord certificates, repairs, all heating, plumbing, drainage and gas work undertaken.

All from a friendly, reliable, trustworthy and professional engineer.

Contact Ryan on

TEL: 07980 209587

or EMAIL: [ryangascoynephg@gmail.com](mailto:ryangascoynephg@gmail.com)



## Uncomfortable with letting strange people into your home?

We are an **all-female** team of interior painters and decorators, working in the north beds village area. Fully experienced in hanging wallpaper, painting – including paint effects, restoring and repairing surfaces, wallpaper stripping and all general home decorating. We are all individually CRB checked, will provide references and testimonials showing the standard of our workmanship giving you peace of mind. We will come to your home to discuss your exact requirement, offer advice and produce a free written specification and quotation. We will then arrive on time, keeping disturbance to the minimum and deliver a quality job using only top quality materials.



**OAKLEY ANGELS**  
*The all-female painting and decorating team*

- Trustworthy
- Experienced
- Guaranteed work
- Peace of mind
- High quality work at a reasonable price

Phone: 07989 778345  
or: 01234 822499



# Girlguiding in Oakley



Oakley has two guiding units – Rainbows for girls aged 5 -7, and Brownies for girls aged 7-10.

If you would like to enroll your daughter in either of these units or any other units locally, please register your daughter at <https://www.girlguiding.org.uk/information-for-parents/register-your-daughter/>

If you would like more information about the individual units before you register your daughter, you can use the contact details below.



## 1st Oakley Rainbows (Wednesdays)

If you have other enquiries, you can email me at [oakleyclaphamrainbows@outlook.com](mailto:oakleyclaphamrainbows@outlook.com) but if you simply wish to register, please do this through the website.

Unit contact: Amanda Keen (Assistant Leader) [oakleyclaphamrainbows@outlook.com](mailto:oakleyclaphamrainbows@outlook.com)



## 1st Oakley Brownies (Fridays)

Recently Brownies have been working hard at the First Aid and Environment badges which have included a range of games, role-plays and crafts. In just a few weeks we hope to be handing the badges out.

During our star-gazing evening Brownies not only identified some actual star constellations above the Social Club field, but they also recreated the Big Dipper and their sign of the zodiac using marshmallows and cocktail sticks (see photo). Grandmother's Footsteps in the dark with a torch was a fitting end to the evening.

Another night Brownies created some fantastic 'magical mixtures', blue and red bubbling potions of vinegar and bicarbonate of soda. The dark tree-covered compound at the back of the Scout Hut provided the perfect setting for witches at work. Back inside in the light, Tawny Owl filled us in with the more scientific explanation and applications of this chemical reaction.

We also enjoyed celebrating Chinese New Year making mini-lanterns, firework pictures and learning to use chopsticks ready for an adrenaline-fuelled chopstick race.



You can register your daughter for Brownies at the same website as for Rainbows (see above) and for queries please email [oakleybrownies452@gmail.com](mailto:oakleybrownies452@gmail.com). Unit contact: Lindsay Saunders

# JUST INLINE WINDOWS

## WINDOWS, DOORS & CONSERVATORIES

**EMAIL:** [info@just-inlinewindows.co.uk](mailto:info@just-inlinewindows.co.uk)

**WEB:** [www.just-inlinewindows.co.uk](http://www.just-inlinewindows.co.uk)

**TEL:** 01234 826740 | 07817 129744



WINDOWS / DOORS / UPVC / ALUMINIUM / BIFOLDS / LANTERNS

Just Inline Windows is a Bedfordshire-based double glazing business specialising in all aspects of glazing installations. We are based in Oakley and cover Bedford, Milton Keynes, Northampton, Luton & surrounding areas. We have a reputation built on high quality services, great value and an exceptional level of customer service and aftercare.



LOTS OF LOCAL RECOMMENDATIONS  
CONTACT US FOR MORE INFORMATION



## MERRI FLOWERS & CHRISTMAS TREES

Welcome to our first article about our farm for 2022. First of all, we would like to say a big THANK YOU to everyone in the village who visited our farm to buy a Christmas Tree, Pot grown Christmas Tree or Wreath and took part in our Christmas Tree Fundraiser and Christmas Tree Cycle Service run by St John's Hospice in Moggerhanger.

We have now had a well-earned rest and have accepted that the first three months of the year mean an inevitable drop-off in income and time on our hands to find different ways to create a successful and productive 2022.

January was a great month to create a new chapter in our farming life and start a winter tidy up. We had plenty of seedlings overwintering from Autumn sowings to tend to. Time was also allocated to base and side pruning our Nordmanns to avoid trees growing into each other and to ensure future customers do not have to battle their way through trees in October. January was also a great month to discover what new things to grow in 2022 and create new events to entice new customers to our farm.

On the cards are plans to increase our stocks of perennials and foliage and try out some new



stems to grow within our pick your own flower plots. You are more than welcome to gather them if you book onto one of our Pick Your Own Experiences. We also plan to host more events, including an Easter Egg Hunt within our Christmas Tree plantations to encourage people to get outdoors more.

February is typically the month that the weather turns colder, and this year we also had to cope with Storm Eunice. For now we are pushing ahead with clearing raised beds, planting and pruning. Come the start of March we will start sowing annual cut flower seeds, planting up our dahlia tubers and taking cuttings.

To discover more about our farm and events, please visit website, [www.merriflowers.co.uk](http://www.merriflowers.co.uk)

Thank you for reading our article, and very best wishes for 2022. Rachelle & Julian Merrill.

### From Snacks to Meals!

Cakes to die for  
Best coffee in the neighbourhood  
Milkshakes, tea, soft drinks  
Open SEVEN Days!  
Friendly staff, good service



**for Coffee**  
**Oakley's**  
**Coffee Shop!**

Phone 824113- [info@o-for-coffee.co.uk](mailto:info@o-for-coffee.co.uk)  
<http://www.o-for-coffee.co.uk>  
Oakley Park (Unit 1), Station Road, Oakley!



**Tudor Rose**  
**Patchwork**  
**Oakley's Sewing and**  
**Threadcraft Shop**

Phone 824983 - [info@tudorrosepatchwork.co.uk](mailto:info@tudorrosepatchwork.co.uk)  
<http://www.tudorrosepatchwork.co.uk>  
Oakley Park (Unit 1), Station Road, Oakley!

We're friendly and very helpful!  
We run all kinds of workshops and clubs!  
We have a great selection of knitting yarns  
We have a huge range of cotton fabrics  
as well as other types of fabric



## Oakley Village Hall

Church Lane,  
Oakley,  
Bedfordshire, MK43 7RJ

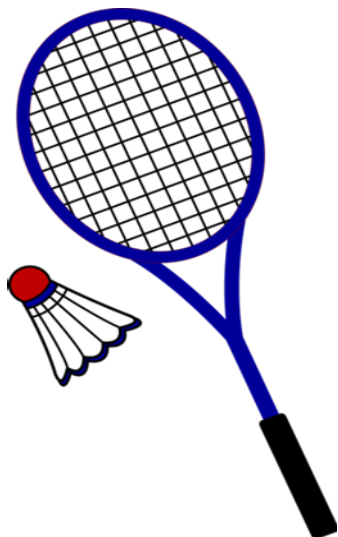
A well-appointed village hall  
Main hall with stage and PA system  
(Main hall is air conditioned)

Separate meeting room with bar

Well equipped kitchen

For information and bookings  
please telephone 07788 796996

## OAKLEY BADMINTON CLUB



**MEET PEOPLE WITHOUT MASKS**

**AND GET FIT !**

**Wednesday 7-8.30pm**

**Sign up now All ages and abilities welcome.**  
**Tel. 07557 441206**



INTERIOR ♦ EXTERIOR ♦ DOMESTIC ♦ COMMERCIAL

*Professional & Reliable Local Decorators*

SPECIALISTS IN WALLPAPER HANGING

DUSTLESS SANDING

AIRLESS SPRAYING

EXTENSIVE PORTFOLIO  
TESTIMONIALS FROM CLIENTS AVAILABLE

TEL: 01234 824173

MOB: 07743 176201

EMAIL: [info@oakhamdecorators.co.uk](mailto:info@oakhamdecorators.co.uk)

WEBSITE: [www.oakhamdecorators.co.uk](http://www.oakhamdecorators.co.uk)

## NIGEL L. WILLE

PLUMBING & HEATING ENGINEER

GAS SAFE REGISTERED

BOILER REPLACEMENTS

FULL CENTRAL HEATING INSTALLATION

BATHROOM SUITES

RADIATOR REPLACEMENTS

TAP REPLACEMENTS

ALL DOMESTIC PLUMBING, HEATING WORK  
AND REPAIRS UNDERTAKEN

FOR A FRIENDLY SERVICE  
PLEASE CALL NIGEL

Tel: 01234 822962

Mobile: 07778 800595

Email: [nigel.wille@sky.com](mailto:nigel.wille@sky.com)





# Oakley Toddlers Group



Come and join us every Monday 9.30 - 11.00am term time only in the Village Hall.

We are a friendly local community run group that has been going since the 1970's. We aim to offer a place for mums, dads, babies, toddlers and carers to socialise together and help start some of the building blocks towards our little ones development.

**Your first visit is free** then only £2.00 for your first child and £1 for each child thereafter.

Children must be supervised at all times (we do not offer childcare)

# NAO Cattery

**BOOK NOW!**



**07411 136691**

naoservices111@gmail.com

www.naoservices111.weebly.com

Bramble Lodge, 29 Oakley Road, Clapham, Bedford MK41 6AN

**Opening Hours: 9.00-11.00 Mon-Sat & 18.00-19.00hrs Mon-Fri  
Sunday and Bank Holidays Closed**

\* Note that all boarding cats must be healthy on arrival and fully inoculated against cat flu and contagious enteritis. Terms and Conditions apply, charge includes insurance and vet on call.

# NAO Cleaning

- Regular cleaning (Weekly, Fortnightly, Monthly etc)
- Home Care Cleans
- Spring cleans
- Moving In & out clean
- Builders before and after clean
- Tenancy beginning & end clean

**FOR A FREE ESTIMATE CALL TODAY ON  
07411 136691**

Bramble Lodge, 29 Oakley Rd, Clapham, Bedfordshire MK41 6AN

www.naoservices111.weebly.com

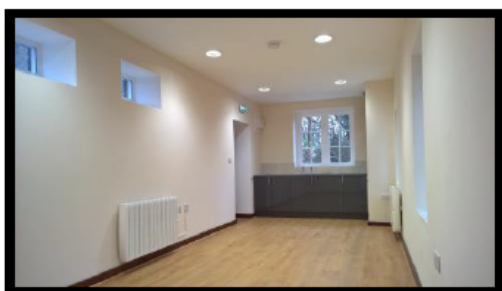
naoservices111@gmail.com

**We cover all of Bedfordshire**

# HIRE THE OLD SCHOOL

Lovell Road, MK43 7RX,  
Reg. Charity No. 1119074

- *Hall available for regular and one-off bookings at weekends*
- *Meeting Room available for regular and one-off bookings weekdays and weekends*
- *Meeting room now with self-contained facilities*



Please contact :

Bill Sellars 07980 745292

Email: [billsellars@theoldschooloakley.org.uk](mailto:billsellars@theoldschooloakley.org.uk)

Web : [www.theoldschooloakley.org.uk](http://www.theoldschooloakley.org.uk)

# RP TESTA

**PLUMBING & HEATING SERVICES LIMITED**

**A professional service with over 25 years experience :**

All general plumbing requirements  
and full design & installation for:

- ◆ CENTRAL HEATING inc. LPG
- ◆ BATHROOMS inc. tiling etc.
- ◆ UNDERFLOOR HEATING
- ◆ UNVENTED HOT WATER



**FOR A LOCAL AND RELIABLE SERVICE CALL**

**T: 01234 781827**

[www.testaplumbingandheating.co.uk](http://www.testaplumbingandheating.co.uk)



**Oakley WI suspended at the end of March 2021, after being a presence In the village for 75 years.**

**If you are interested in restarting the WI or want more information of other WI's locally please contact:-**

**The Federation Secretary on:-**

**01234 359538 or  
[bcfwi@btconnect.com](mailto:bcfwi@btconnect.com)**



### **OAKLEY GARDENING CLUB**

We are convening a meeting of the club towards the end of January 2022 to decide how we go forward. Please keep an eye on the village notice-boards for further information.

For further information contact Denise Hookham on 01933 312119



For all Pre-School Children  
At St Mary's Church Oakley on

Thursdays during School Term 10am to 11.45

Crafts, Painting, Play, Music, Stories and a Healthy Snack plus tea/coffee for the adults

More detail from Dorothy Palmer at  
01234 823959



### **SYDNEY HOWARD LOVELL MEMORIAL ALMHOUSES AT OAKLEY**

The Lovell Homes is a small independent living community comprising two bedroomed bungalows and one/two bedroomed flats

Applicants over the age of 60 are invited to apply to go on the register of interest for a property - priority will be given to those with an agricultural or related background.

If you would like to be considered please visit the website [www.lovellhomesoakley.co.uk](http://www.lovellhomesoakley.co.uk)

Or contact the Clerk :

Mandy Newton

On 07736 466965

Registered Charity Number : 200480



# oakley *Motorcycle* club

It has been an ultra quiet Winter for Oakley Motorcycle Club yet again as, with the current variant of COVID together with restrictions and a fairly senior membership, we have not tried to run our usual Thursday evening quizzes, raffles and AGM. Unsurprisingly there has not been much of an appetite for cramming 100 or so people into Oakley Club! However, there is some light at the end of the OMC tunnel and we are very hopeful of resuming where we left off last Summer with a busy period of events.



Some of you may be aware that we have two bike club members who currently appear on TV or are about to in the next few weeks. Keep an eye out firstly for Guy Willison who is a good friend of presenter Henry Coles. Guy, affectionately known as "Skid", can regularly be seen alongside Henry and others on the TV shows "The Motorbike Show", "Shed and Buried" and "Find it, Fix it, Flog it". Guy has also set up his own company 5Four Motorcycles in the Bedfordshire village of Staploe close to St Neots.



The other TV personality regular bike club member is the amazing Sean Rose. Sean, whilst a PTI in the RAF, broke his back in a skiing accident back in 2000. Although confined to a wheelchair he has not let that stop him and has gone on to become a World Champion water skier, World Cup Gold Downhill Ski racer, Winter X games medalist, Double Winter Paralympian, GB Paralympics Ambassador, Powerkite Instructor, Snowkiter, Pilot and is also a motorcyclist riding a Can Am Spyder.



Sean has been a TV Presenter, Reporter and Commentator at a number of previous Winter Paralympics and appeared on the BBC Invictus Games, The One Show and Celebrity Eggheads.



Sean will be appearing again alongside others as a Presenter and Pundit on the Channel 4 Beijing Paralympics between 4-13th March 2022 Read more about Sean and his journey at <https://www.seanrose.co.uk/>



Stay safe, Baysie  
Roger Bays - Chair OMC





## Oakley Sports & Social Club Family & Sports Bar

# MENU

### KITCHEN OPENING TIMES

THURSDAY (SEE THURS MENU) FRIDAY: 5PM - 9PM SATURDAY: 12PM - 9PM

#### PIZZA

Margherita **£7.95 (V)**

*Tomato Sauce, Mozzarella*

Pepperoni **£8.95**

*Mozzarella, Pepperoni*

Spicy Meat Feast **£9.95**

*Spicy Nduja, Ham, Pepperoni, Jalapenos*

BBQ Chicken **£8.95**

*BBQ Chicken, Smoked Bacon, Red Onions*

Veggie **£7.95 (V)**

*Mixed Peppers, Red Onions, Mushrooms*

#### ON THE SIDE

Chunky Chips **£2**

Sweet Potato Fries **£2.50**

Cheesy Chips **£2.50**

Onions Rings **£1.50**

Fiery Chicken Wings with Blue Cheese

Dip **£4.50**

Halloumi Fries & Sweet Chilli Dip **£2.50**

#### BURGERS

*Served in a brioche bun with salad and chunky chips*

Beef, Burger Relish **£7.95**

Crispy Chicken, Mayo **£8.95**

Oriental Veggie,  
Sriracha Mayo **£7.95**

#### BEST OF THE REST

BBQ Baby Ribs, Chunky Chips,  
Onion Rings **£9.95**

Scampi, Chips, Peas &  
Tartare Sauce **£8.95**

Ham Double Egg &  
Chips **£8.95**

*Kids  
Meal Deal  
**£3.50**  
When purchased on  
Saturday between  
12pm - 2:30pm  
under 12's*

#### KIDS MENU - £4.95

Chicken Nuggets & Chunky Chips

Fish Fingers & Chunky Chips

Sausages & Chunky Chips

All with peas or baked beans



Oakley Sports & Social Club  
Family & Sports Bar