



# Oakley Newsletter



**Spring 2025  
Number 102**

**Villager awarded BEM**

**Oakley Parish Youth Club**

**Inconsiderate Dog Walkers Everywhere!!**

**Railway Tragedy in Oakley**

**Speeding car in village at 67mph!! Can you help to keep our streets safe?**

**Oakley Volunteers Decorate Charity Christmas Trees**



Front Page Picture : Oakley Cowslips  
Photographer : Shelley Eden

### The Oakley Newsletter

is published quarterly by Oakley Parish Council and delivered by parish councillors free to every house in Oakley – about 1,000 copies.

### Opinions and information

in the Newsletter, both text and adverts, may not be endorsed by the Editor or the Parish Council.

### Next issue

Final copy date for the Summer issue is 23rd May 2025  
The publishing date is 1st June 2025

### Advertising rates

Colour Advertisements  
Quarter page: £30  
Half page: £60  
Whole page: £120  
Four consecutive quarter page adverts - discount 10%  
Black & white advert rates are available upon request.  
Loose inserts, any size up to A4: £100  
Invoices will be issued by Ann Paice, with payment to Oakley Parish Council.

### Editor

Bill Chalker  
13 Bevery Close  
Oakley  
MK43 7SH  
07789 997733  
wrecklatch@gmail.com



### Printers

White Hart Press  
58a York Street  
Bedford MK40 3RL



### Hello Children

look out for  
Ten more  
little ones



# Parish Council News

## Spring 2025

Dear Residents,

A warm welcome to all villagers and to the spring edition of the Oakley newsletter.

### Christmas Lights

Since my last column, Christmas has come and gone. However, I wanted to mention the Christmas lights. I do hope that you enjoyed the new lights at Highfield Road crossroads which I thought looked magnificent.

Many villagers enjoyed the Christmas lights switch on at the Church on the 3rd of December - accompanied by carols, mince pies and mulled wine. It really made us feel that the festive season had begun. Thank you to all at the Church for organising the event and to Rev. Katherine Wilson for telling the Christmas Story and leading the carol singing.

It has become apparent that our Christmas tree in the churchyard has grown significantly; so much so that our lights do not reach the top of the tree. You may also have noticed that the lights in the trees were intermittent in nature. Our contractor tells us they are now quite old and difficult to maintain. Consequently, the parish council will be having a review of Christmas lights at our March meeting.

Over the Christmas period I was able to spend more time walking around the village. There are of course a lot of visitors to Oakley at this time of year and it was pleasing to see that the pavements were reasonably clean and tidy. I did ask the phantom sprayer to make one or two visits to highlight dog mess. We now have the big waste/litter bins in situ meaning there is plenty of space for all rubbish.

### Budget Details

In early January the Parish Council met and reviewed all expenditure. If you look at the parish council finances you could be forgiven for thinking that we have a lot of money to spend.

Continued on page 3

## OAKLEY PARISH COUNCIL

### PARISH CLERK

**Ann Paice**  
31 Radwell Road  
Milton Ernest  
Bedford, MK44 1SH.  
07873 887370  
parishclerk@oakleyvillage.co.uk

### CHAIR

**Sara Fardon**  
61 Lincroft.  
824516  
sarafardonopc@gmail.com

### VICE-CHAIR

**Robert Saunders**  
College Farm.  
07770 232469  
rjsaunders5591@gmail.com

### Jane Walker

(Parish and Borough councillor)  
11 Dewlands  
07952 879587  
jane@janewalker.co.uk

### Jonathan Abbott

(Parish and Borough councillor)  
13 The Furlong  
950868  
jonathan.abbott71@icloud.com

### Pat Olney

33 Station Road.  
824384  
pat.olney@btopenworld.com

### Phyllis Jones

35 Ruffs Furze 910187  
phylmaj@gmail.com

### Paul White

20 Reynes Drive. 825472  
paulwhite20rd@gmail.com

### Carla Bays

43 Reynes Drive  
07786 363770  
carla.millar@hotmail.co.uk

### Richard Worker

Oak Lodge Church Lane  
826111  
richworker@hotmail.co.uk

### Thomas Saunders

Oakland House Westfield  
Road 07902 146751  
tsaunders678@outlook.com

### Caroline Worker

3 Parsonage Close  
07765 077114  
caroline.worker@outlook.com

We do have money, but these funds are reserved for spending in certain areas. They are described as Section 106 funds, which the council receive from developers for maintenance. This is set aside for specific spending at The Furlong, The Grange and Parsonage Close, plus a sum for the bus shelter.

We have reviewed all expenditure and details can be seen in the minutes of the Finance group which met on the 2/1/25. We recommended an increase in the precept of 4.98% to £61,100. The band D rate would increase by 4.4% from £58.56 to £61.38.

### **Pride in Oakley**

I would like to draw your attention as to how everyone can maintain pride in our village and do their utmost to ensure we live in a pleasant environment. There are a few things that have made me think about this.

In the last newsletter I wrote about the litter pick. I was contacted by a resident to say just how much litter there is, on a regular basis - not just at the time of a litter pick. A lot of people do pick up litter in Oakley and the Parish Council also employs a litter picker. Our village does have litter, but overall it does look clean and tidy. Thank you to everyone who does pick up litter. If you drop it - maybe you could desist from doing so.

I try to keep my eye on the verges in Oakley and you can, by reporting to the Parish Clerk where verges have been damaged.



There are bits of wear and tear on verges. However, large ruts and tyre tracks are just not acceptable. It is with real disappointment that verges in the village have been ripped up - either by households or by visiting commercial vehicles. Verges do not belong to households and damage to them spoils our environment. Today (early February)

there was a really extreme example in Lincroft, of the damage that can be done, making the whole area unsightly, as you can see from these photos.



This damage is entirely preventable. I think it is tantamount to vandalism, within our own locality. Repair costs are borne by the taxpayer. It is not what we want for Oakley. We now have to ask the Borough Council to repair the significant damage, which will take time. Meanwhile, the unsightly mess remains and could have been avoided with due care and attention.

Next on my list is parking. There has been a whole stream of comments on Facebook about parking and the effects of traffic in the village, particularly around the time the schools start and finish. It is surprising how many comments there were on people parking their cars over resident's driveways and how they do not feel they can leave their homes at peak school times.

In conversation with myself and other parish councillors, residents have suggested that we have double yellow lines to solve the issue. The view of the parish council is that we live in a village and we do not want to be over zealous on double yellow lines. It only moves the problem around.

The parish council did request double yellow lines on the corners of Reynes Drive and Flax Close - because of safety - cars parking right up the edge of the road, children trying to cross and cars wanting to turn into those roads. In fact the highway code was totally disregarded. I did read a sign once, whilst in traffic which said "You are traffic". You could be part of the problem and maybe, with a slight change in behaviour then you could be part of the solution. Please be considerate to residents and other road users.

At the time of writing, we have set up a parish council open meeting to discuss the consultation from Lincroft school about additional pupils, which has led to the many views I have read on Facebook. The meeting itself was attended by Executive head, Richard Spencer. Richard set out the detail that the consultation is covering. The school is currently undergoing major building and construction works to improve the facilities and create the necessary infrastructure to meet the anticipated increase of pupils in future years.

Continued on Page 4

### **Parish Clerk's Working Hours**

The Parish Clerk is currently working from home Monday, Tuesday and Wednesday mornings. She is also in the Old School Meeting Room (at the rear of the building) on Thursdays between 10.00am and 2.00pm if anyone wishes to visit in person. She does not work on Fridays but any messages or emails will be picked up on Monday.



## Parish Council News - Continued :-

A lot of the debate at the meeting centred on the disruption to the village from traffic influx. The Department of Education consultation does not specifically cover this aspect, which is frustrating, as an increase in pupil numbers, will have an impact on the village locale. It was clear from the meeting that school activity does affect nearly every road in Oakley.

Whilst the school is working hard to ensure that there is courtesy to residents from pupils and that buses are monitored and despatched as quickly as possible, there are no easy solutions to this problem. The infrastructure of the village is not designed for the continuing increase in the volume of traffic. There were some great suggestions of drop off zones being created - the challenge of course being to identify where these could be situated.

Two areas in the village - Lincroft and Hunts Path are classed as no verge parking areas. Appropriate signage is in place. If you do see cars parked on the verges in Lincroft or Hunts Path then Bedford Borough Parking Services have said to call them on 01234 718359 or message on the text only number 07553895403 if there is a vehicle parked actually on the verge and they will send someone as soon as they are available. Please

keep these numbers to hand and use if needs be.

## See you in April?

We have the annual Parish Meeting on **1st April** at 7.00pm . All villagers are welcome and there is plenty of opportunity to ask questions, find out more about the parish council, or suggest new ideas.



Failing that here are the dates of Parish Council meetings for the coming year.

01.04.25. Annual Parish Meeting	06.05.25.
03.06.25.	01.07.25.
02.09.25.	07.10.25
04.11.25.	02.12.25.
06.01.26. Finance Advisory Group	
13.01.26.	03.03.26.
07.04.26. Annual Parish Meeting	

Members of the public are always welcome to attend the public open session at the beginning to put any questions to the Parish Council. You can even stay and observe the whole meeting!

I look forward to seeing you there.

Kind regards to everyone in Oakley

Sara Fardon, Chair

## 2025 Oakley Show

The 2025 Oakley Show will take place on Sunday, 7th September so please put the date in your diary.

It is time to start sowing your seeds and get your crafting started ready for showing.

We would love to hear from you if you have any ideas or suggestions for the show, you can email [the1juliamn@aol.com](mailto:the1juliamn@aol.com) or call on 07778537427.

Keep up to date with what is going on our Facebook page, Oakley Show.

Oakley Show Committee



## Needs You to keep our streets safe!

Our team has been pared down to just 8 volunteers and it is clear that we **urgently need new recruits** if we are to continue to deliver our current level of involvement.

We are a welcoming group and operations are pleasant social experiences; there is plenty of time to chat. If you would find it helpful to come with a friend, we are very able to train and deploy you as a partnership.

Call Paul on 07 968 122 301 or email him on [paulphillips65@gmail.com](mailto:paulphillips65@gmail.com)

Paul Phillips – Speedwatch Co-ordinator





**HAZEL KAYE HAIR,  
BEAUTY & FACIAL  
AESTHETICS**



# Hazel Kaye

**Voted No 1 Salon in the UK**

We offer an exceptionally highly trained and expansive range of Stylists and Beauty Therapists from Managers to Rising Stars.

## Hair Menu

Wella Colour Experts  
Restyle  
Wash, Cut & Blow Dry  
Children's Hair Cuts  
Beauty Works Hair Extensions

## Barbers

Wash, Cut & Finish  
Gents Skin Fade

## Beauty Menu

Skincare Specialists  
Luxury Facials  
Make Up Artists  
Gels, Manicure & Pedicure  
Waxing  
Lashes & Eyebrows  
LVL Lashes  
Relaxing Massage  
Tanning  
Ear Piercing  
Pamper Days

## Weddings

Make Up, incl Bridal Hair Ups

## Facial Aesthetics

Regular Private Clinics Held



**Book Appointments/Shop Online**

**Exceptional Savings**

**on Premium Hair, Beauty & Fragrance Brands**

including Savile Row Men's Fragrances & Grooming,, Maison Charel Vegan Fragrances & Seksy Beauty, *designed at Hazel Kaye*, plus Gift Vouchers - the perfect gift for those special occasions.

40 High Street, Oakley, Beds, MK43 7RG

Spacious salon/Free Parking

Tel:01234 826502,e:hazel@hazelkaye.com www.hazelkaye.com



# Borough Council Report



## Council budget

The Borough Council budget for 2025/2026 is based upon a 2.99% increase in core Council Tax, supplemented by a 2% increase in the Adult Social Care Precept. As this is below the government threshold for council tax increases, we will not have to go to the government for permission to implement this.

We are aware that we raise this money from residents in order to improve services and facilities in the area. The budget demonstrates that councillors are committed to protecting and investing in services. In November 2023 the Executive launched a 4-year Efficiency Plan to transform service quality, improve productivity, tackle waste and inefficiency, and enhance customer service experience – Service EFFICIENCY rather than service cuts.

The revenue budget has, therefore, been carefully prepared, delivering efficiency savings driven by productivity gains or effective contract management/negotiations. It enables carefully planned and affordable investment that recognises the need for support and investment for town centres, to respond to the needs of communities, to respect the environment and essential maintenance needs and, in addition, deliver capacity to deliver quality services.

The capital budget that was passed earlier in January, included proposals to invest in the Corn Exchange, refurbish and modernise Kempston and Robinson pools plus renewal of the track at the Athletics stadium; Regeneration in both Bedford and Kempston town centres is included via a series of short, medium and long term projects and in partnership with the NHS, new doctors surgeries are proposed for Great Barford, Wixams, Wootton and Kempston.

## East West Rail (EWR) update

On 15th January, in response to the EWR consultation, Conservative councillors, led by Independent Councillor Gribble, tried to overturn the council's long standing support for Route E. Whilst it was argued that this was unlikely to have made a difference to the outcome of the recent consultation, we felt that by withdrawing the lead authorities' support in the area, would send a clear message to the EWR company who do not appear to be listening to any of the requests or concerns that residents and parish councils are passing on to them (including the request for a tunnel rather than a cutting through Clapham).

Unfortunately the motion was not supported by

enough councillors from other political groups so the councils official position is still in support of this route.

The next stage is a Statutory consultation later this year but the project is fully supported by National government and will be determined by them.

## Positive report for SEND services in Bedford Borough

Inspectors have given a positive report for how Bedford Borough Local Area Partnership provides for children with special educational needs and disabilities (SEND).

Ofsted and the Care Quality Commission (CQC) carry out inspections at councils across the country, and returned to Bedford Borough in November.

The report describes how children in Bedford Borough have their "voices heard effectively", with the parent and carers' forum (PCF) being a key part of the partnership. It also cites a culture of co-working with children and families to help to shape services.

It adds; "Mostly, the needs of children and young people with SEND are identified early and accurately across education, health and social care."

"Waiting times in many health services have decreased, which aids the prompt identification of SEND.

"Education, health and care (EHC) plans are completed with excellent timeliness. This means children and young people with SEND do not normally experience frustrating delays before the area identifies and puts plans in place to meet their needs."

Overall this was a positive inspection outcome which highlighted the strengths of the Local Area Partnership in respect of meeting the needs of children with SEND. There are areas for improvement and an action plan to address these areas will be published by beginning of March.

If you would like to read the full report is available at: <https://files.ofsted.gov.uk/v1/file/50268244>.

## Free parking in the town centre

The free parking scheme has been extended for the coming year and will include 4 hours free parking in Lurke Street car park to add to the current offer of 4 hours free parking every day in All Hallows multi story. All-day Sunday parking in most council owned car parks will remain free of charge.

Continued on Page 8





# Oakley parish YOUTH CLUB



**FRIDAYS 7PM-9PM**

**OLD SCHOOL. LOVELL ROAD, OAKLEY**

to find out more contact youth leader JJ on 07469659826 or email [oycsecretarial@gmail.com](mailto:oycsecretarial@gmail.com)

**01**

## entry fee

we do have an entry fee for the youth club but it is only £2.50 per person.

**02**

## activities

we have a range of activities that vary depending on you what to do such as going outside during the warmer weather and small football matches. we have indoor activities and an area you can go and hang out with your friends.



**03**

## Tuck shop

we have a tuck shop filled with all of your favourite snacks and treats and if we don't have anything that you want let us know and we can add it to the tuck shop so you can enjoy it with the rest of your friends. The prices are also cheap!!!!





## Borough Council Report - Continued

### Devolution

The government is currently encouraging all councils to come together to create large strategic authorities that will be responsible for issues such as planning, transport and other cross council responsibilities such as health and policing. They have also expressed their intention to abolish district authorities as part of this, but as Bedford Borough is already a unitary authority, we will not be affected by that.

Mayor Tom has been in discussion with his counterparts in Milton Keynes, Central Beds and Luton, along with the two councils in Northampton, but as there was not a consensus on which ones would be included as part of the new grouping, the government has decided not to make us one of the first wave of new Strategic authorities to be created. This will be looked at again in around 18 months time.

### Year of Reading

Bedford Borough Council has recently launched its "Year of Reading". which will take place throughout 2025, with a wide range of events and initiatives to celebrate and promote reading across the Borough, including town centre performances, literary trails, and author readings.

There will also be a range of volunteering oppor-

tunities, such as the chance for adults to volunteer in local primary schools, helping to improve children's reading skills and life chances.

To find out more or to get involved visit [www.bedford.gov.uk/yearofreading](http://www.bedford.gov.uk/yearofreading) or email [yearofreading@bedford.gov.uk](mailto:yearofreading@bedford.gov.uk)

### Solar Farm off Twinwood Road

We have just had notification from developers of a proposed new solar farm off Twinwood Road. I have included the map with the redline showing the location of the site although the actual developed area will be smaller. Residents and councillors will have a full opportunity to hear about the plans at public consultations which are currently being arranged.

Jane Walker

Borough Councillor for Clapham and Oakley

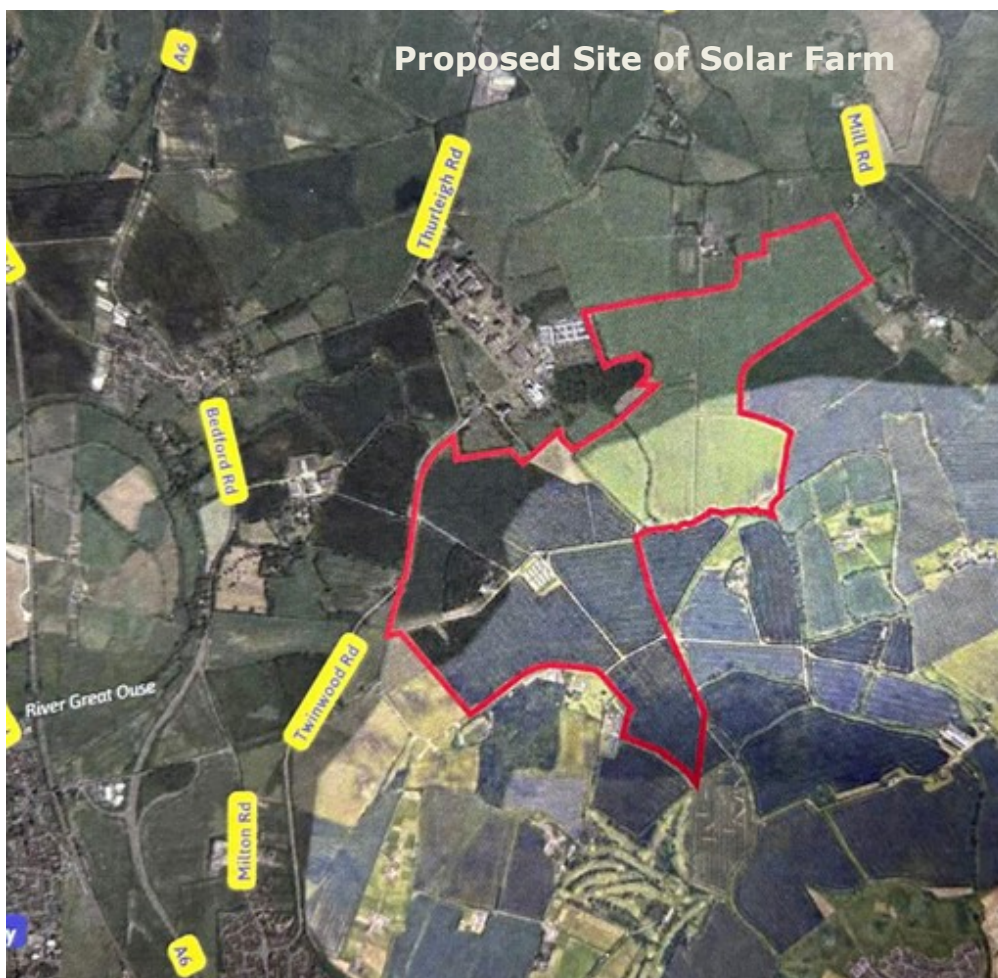
If you need any further information or assistance with issues at the council, you can call me on 07952 879587 or email [jane@janewalker.co.uk](mailto:jane@janewalker.co.uk). You can also find me and/or message me on Facebook @CllrJaneWalker.

Jon Abbott

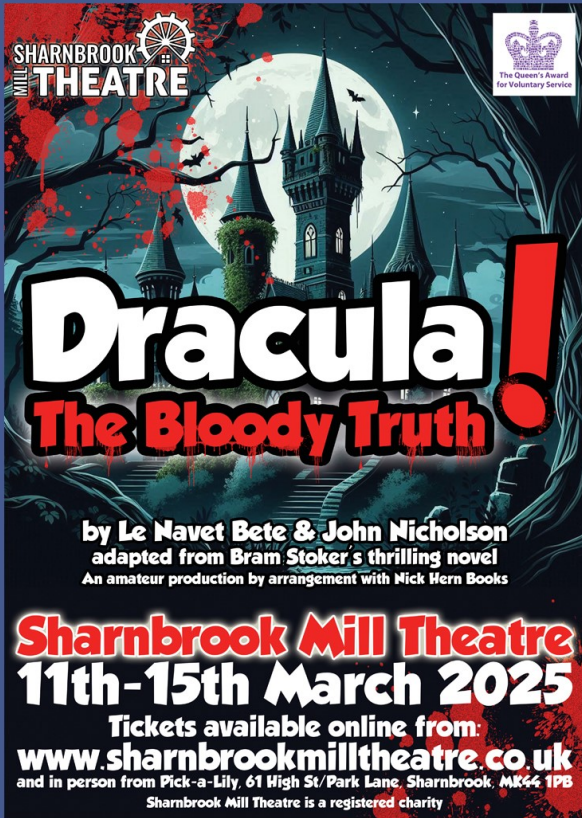
Email: [jonathan.abbott71@icloud.com](mailto:jonathan.abbott71@icloud.com)

07784 549180

Facebook: Clapham & Oakley Liberal Democrats







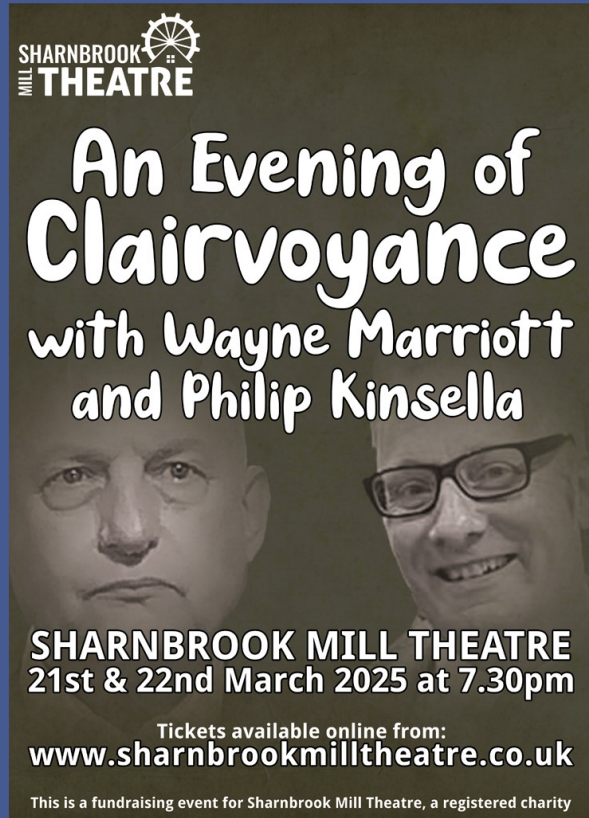
SHARNBROOK MILL THEATRE

**Dracula!**  
**The Bloody Truth**

by Le Navet Bete & John Nicholson  
adapted from Bram Stoker's thrilling novel  
An amateur production by arrangement with Nick Hern Books

**Sharnbrook Mill Theatre**  
**11th-15th March 2025**

Tickets available online from:  
[www.sharnbrookmilltheatre.co.uk](http://www.sharnbrookmilltheatre.co.uk)  
and in person from Pick-a-Lily, 61 High St/Park Lane, Sharnbrook, MK44 1PB  
Sharnbrook Mill Theatre is a registered charity



SHARNBROOK MILL THEATRE

An Evening of  
**Clairvoyance**  
with Wayne Marriott  
and Philip Kinsella

SHARNBROOK MILL THEATRE  
21st & 22nd March 2025 at 7.30pm

Tickets available online from:  
[www.sharnbrookmilltheatre.co.uk](http://www.sharnbrookmilltheatre.co.uk)

This is a fundraising event for Sharnbrook Mill Theatre, a registered charity

[www.sharnbrookmilltheatre.co.uk](http://www.sharnbrookmilltheatre.co.uk)

DAVID JAMES



[WWW.DAVIDJAMESKITCHENS.CO.UK](http://WWW.DAVIDJAMESKITCHENS.CO.UK)



MANUFACTURE DESIGN INSTALLATION

We are a local manufacturer of beautiful kitchens. We sell direct to save you money. The factory showroom has an extensive display of different styles.

SAVINGS ON ALL KITCHENS

& Up To 25% Off Top Brand Appliances

01525 722230 PULLOXHILL BEDS MK45 5EU

**WHITE'S**  
**Lawnmowers & Garden Machinery**

Sales ~ Service ~ Parts ~ Hire  
Briggs & Stratton Service Centre

**STIHL** **TIGA** **ALKO**



**LAWNFLITE** **MTD** **Indespension**  
...& many more

LARGE SELECTION FOR ALL YOUR GARDENING NEEDS

**01234 826066**  
[info@whites-online.co.uk](mailto:info@whites-online.co.uk)

[www.whites-online.co.uk](http://www.whites-online.co.uk)  
College Farm, Oakley, Bedford, Bedfordshire, MK43 7RX



Sales, Lettings & Auctions

**Lane &**

**HOLMES**

*Est. 1985*

MAYFAIR  
OFFICE GROUP

move  
withUS



Our wealth of **experience**  
and **friendly service** makes  
us the team you can **trust.**

01234 327744 | [sales@laneandholmes.co.uk](mailto:sales@laneandholmes.co.uk) | [laneandholmes.co.uk](http://laneandholmes.co.uk)



## Steve's Snippet No. 77

You might call me a (very) late developer, but my ageing brain has developed an improving grasp of certain mathematical concepts and an appreciation for associated puzzles.

Purely for your entertainment, I present 2 puzzles...

1. In a room of 100 people, 99% are right-handed, 1 person is left-handed.

How many right-handed people must leave the room so that 98% of those remaining are right-handed?

2. Find  $x$  when  $x = \frac{42^2 + 42}{42}$

Allow 10 seconds to solve each puzzle.

## OAKLEY VILLAGE MONTHLY



Run by Oakley Parish Council and held in Oakley Village Hall

**Friday 21 MARCH 2025**

**Friday 25 APRIL 2025**

**Friday 16 MAY 2025**

**Friday 20 JUNE 2025**

7.30pm start

Maximum 6 people per team

£3.00 per person (cash payment only please)

Bring your own snacks and drinks (alcohol allowed)

If you would like to enter a team please advise  
Richard Worker at [richworker@hotmail.co.uk](mailto:richworker@hotmail.co.uk)

Come along and have some fun and socialise with  
fellow quizzers

## News from the Tower

Did you know that the 'tunes' we ring on church bells are called methods? Bellringers learn where their bell is supposed to ring throughout the method. There are hundreds, if not thousands of methods, depending on how many bells are being rung and the complexity. One of the first and easiest methods to learn is called Plain Hunt. There are many weird and wonderful names for different methods, such as Grandsire, Great Ouse Bob Minor, Apathy Surprise Major (this sometimes describes the ringing band at a Friday night practice!). There is even one called Vegetarian Sausage Doubles! Someone was having a laugh when they named that one. The first part of the method name is personal to that method; the second part, e.g. Surprise, describes the method category; the third part indicates the number of bells involved. Doubles is five bells, Minor is six bells, Major is eight bells, for example.

If you have experience of church bell ringing, please come along to a practice night and see if you would like to

join our band. The Oakley Band of Bell Ringers practice on Friday evenings from 8pm to 9:15pm and ring on Sunday mornings before the services at St Mary's Church. New members are very welcome too!

If you would like to come along on a practice night to see what it's all about and to have a go, please contact our Tower Captain, Bill Sellars on 07980 745292 or email

[thesellars@btinternet.com](mailto:thesellars@btinternet.com).

Shelley Eden





# Oakley Educational Foundation



The Foundation exists to assist young people between ages 16 - 25, who live in the Parish, with grants towards the cost of books and tools, etc. in furtherance of their education.

Applications and more information can be obtained from the Parish Clerk from the end of March.

For an application form please email [parishclerk@oakleyvillage.co.uk](mailto:parishclerk@oakleyvillage.co.uk)

Applications accepted by 2nd May. Itemised receipts for purchases of goods must be provided.



*Liz Gillum*

## BOOKBINDER

Modern and Traditional Bindings

Small Leather Goods

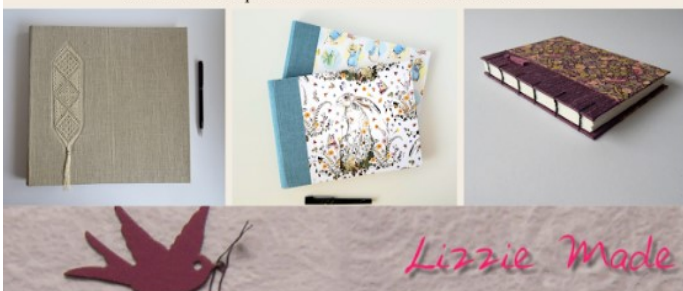
Book Repairs

Classes and Workshops

Contact:

LizzieMade at Folksy.com

or email enquiries to: [lizziemade@aol.com](mailto:lizziemade@aol.com)



*Let's Play*  
**Badminton**  
 EVERY  
 WEDNESDAY  
 all abilities welcome!  
 Lincroft School Sports Hall  
 7.30pm-9pm  
 Contact Alyn Walker  
 for more information  
 07557441206

**OAKLEY BADMINGTON**



# Oakley Village Monthly Quiz .....

The Oakley Monthly Village Quiz continues to be extremely well supported and in January we had a record number of quizzers in attendance. The December Quiz was won by "The Jingle Bells" and the January event by "The Pavenham Gamers" in a tie break, both teams are pictured. The publication date of this Newsletter means we will announce the February winners in the next edition. The "team names" always cause amusement and our favourite in the recent quizzes was "Is Oakley Bridge open ?", those who use social media will understand why.

It was with pleasure that the Parish Council and the Quizzers made donations from the quiz profits to the Day Centre and to the village's residential care home for people with learning disabilities. The Day Centre is held in the Old School opening every Tuesday, Wednesday and Thursday and the care home is situated in the High Street on the crossroads. Both used the donations to support their Christmas celebrations, a couple of photos are attached.

Remember anyone can enter the quiz to have a great time and catch up with friends and neighbours. The next **THREE** quizzes will be held on: **21 March, 25 April and 16 May**. If anyone wishes to enter a team, maximum 6 people, then please email me at [richworker@hotmail.co.uk](mailto:richworker@hotmail.co.uk).

Richard Worker



*"The Jingle Bells"*



*The Care Home*



*The Day Centre*



*"The Pavenham Gamers"*



## Down Memory Lane

### Railway tragedies in Oakley .....

For decades the railway has played a major part in the lives of Oakley residents. Until the 1960's the railway line from Northampton to Bedford ran south of the village cutting across the Stevington Bromham "T" junction with remnants still visible today. More significantly the railway line from London to the Midlands forms an eastern village boundary with bridges in Highfield Road and Lovell Road. Even today the railway causes much debate whether this be the regular flooding under the Lovell Road bridge or the route that the East West Rail line should take !!

The railway came to Oakley when the Midland Railway opened the station on 8 May 1857 as part of its extension from Leicester to Bedford and beyond taking between eight and fourteen minutes to travel from Oakley to Bedford. The "Railway Cottages", still standing today on the opposite side of the line, were built between 1883 and 1901 to accommodate railway workers. The ongoing development of the railways created a period of "rail dominance". However, two fatal rail accidents caused Oakley to "hit the headlines". On 21 January 1938, at Oakley junction to the south of the village, an Express train collided with an empty stock train killing three and injuring six people.



**The Wrecked Express  
21 January 1938**



Then on 4th October 1949 another fatal railway accident occurred. Two Wellingborough men were killed in a collision between two goods trains, one of which was stationary, on the Stafford Bridge Viaduct.

The damage caused was extensive with one engine hurtling over the viaduct through the 18-inch-thick bridge wall causing a 30-yard-long gap. In the meadow below hundreds of tons of coal from loaded trucks from both trains were heaped on top of the wrecked engine, trucks blocked the lines, others dangled over the bridge, and more trucks and masonry littered the meadow. Burning lumps of coal had been catapulted 50 yards from the

bridge. Two hundred men were required to clear the blocked lines and lay a 100-yard stretch of pre-fabricated line.

In the early 1960's a major change to the railways took place when Richard Beeching, Chair of the British Railways Board, implemented a countrywide closure of many rail routes and stations. What was dubbed "The Beeching Axe" resulted in the closing of the Northampton to Bedford line and following the closure of Oakley Station to passengers on 15 September 1958, due mainly to being uneconomically viable with the advent of widespread motor traffic, the station was completely closed in 1963. There was a spark of "re birth" caused by the successful electrification of the Bedford to London line during the 1980's. British Rail proposed that the re-opening of Oakley Railway Station be considered. However, despite benefits being recognised, strong local opposition prevented this idea being progressed.



**Stafford Bridge Train Crash  
- 4 October 1949**

## Down Memory Lane - Continued

My personal railway memories are certainly post tragic accidents!! But my childhood family home was at the bottom of Station Road so the sound of trains was constant although you soon learned to ignore it.

Unless my memory is playing tricks, I also remember being taken out of primary school to watch the famous "Flying Scotsman" pass through.

Also a primary school friend lived on the station site, and at one birthday party a passing train caused the jelly and ice cream to "wobble" more than usual and we shook in fear just as much !!

Many of the former station buildings still stand, some preserved for business use with the former goods shed and coal offices categorised as Grade II listed buildings.

What the future of the railway holds for Oakley is uncertain, but one thing that is certain is that it has played a major part in our village's past.

Richard Worker



## NAO Cattery



**BOOK NOW!**

**07411 136691**

naoservices111@gmail.com

www.naoservices111.weebly.com

Bramble Lodge, 29 Oakley Road, Clapham, Bedford MK41 6AN

**Opening Hours: 9.00-11.00 Mon-Sat & 18.00-19.00hrs Mon-Fri  
Sunday and Bank Holidays Closed**

\* Note that all boarding cats must be healthy on arrival and fully inoculated against cat flu and contagious enteritis. Terms and Conditions apply, charge includes insurance and vet on call.

## NAO Cleaning

- Regular cleaning (Weekly, Fortnightly, Monthly etc)
- Home Care Cleans
- Spring cleans
- Moving In & out clean
- Builders before and after clean
- Tenancy beginning & end clean

**FOR A FREE ESTIMATE CALL TODAY ON  
07411 136691**

Bramble Lodge, 29 Oakley Rd, Clapham, Bedfordshire MK41 6AN  
www.naoservices111.weebly.com  
naoservices111@gmail.com

**We cover all of Bedfordshire**

## RP TESTA

**PLUMBING & HEATING SERVICES LIMITED**

A professional service with over  
30 years experience for  
all general plumbing and heating requirements  
and full design and installation for:

- ◆ **CENTRAL HEATING inc. LPG**
- ◆ **BATHROOMS: inc. tiling etc.**
- ◆ **UNDERFLOOR HEATING**



A LOCAL AND RELIABLE SERVICE

**01234 781827**

**www.testaplumbingandheating.co.uk**





**SPECIAL SERVICES & EVENTS COMING UP**

Sun 30th Mar	10.30am	Joint Mothering Sunday Service - St Mary's
Sun 13th Apr	10.30am	Palm Sunday Service with donkey procession - St Mary's
	10.30am	Palm Sunday Service - Oakley Methodist Church (OMC)
Thurs 17th Apr	6.30pm	Joint Maundy Thursday Meal and Communion - St Mary's
Fri 18th Apr	10.00am	Good Friday Craft Workshop- St Owen's Bromham
	2.00pm	Good Friday Service - St Mary's
Easter Sunday 20th Apr	10.30am	Family Communion Service & Egg Hunt-St Mary's
	10.30am	Easter Sunday Service - OMC

**TEAS IN CHURCH**

St Mary's popular 'Teas in Church' is back! Sundays from 3.30pm to 5pm, begins 1st June. Why not come along and enjoy delicious refreshments in beautiful surroundings, while supporting your local church?



\*For more details on all our events visit [www.bromhambenefice.org](http://www.bromhambenefice.org) or [www.northbedsmethodist.org.uk](http://www.northbedsmethodist.org.uk)

**MESSY CHURCH SESSIONS**

Messy Church runs on Thursday mornings at 10am during termtime in St Mary's for preschool children and their carers.

Messy Church For All is for all ages and is meeting on Tuesdays 11th March & 20th May at 3.30pm at Oakley Methodist Church.

Messy Church Plus is a school holiday session in St Owen's Bromham 11.30-1.30pm. Any age (accompanied) children welcome- next session Mon 5th May. The session includes a free light lunch.

Please do come along!



**CONTACTS**

St Mary's: Revd. Catherine Wilson: 01234 825665 [vicar@bromhambenefice.org](mailto:vicar@bromhambenefice.org)  
 Church Wardens: Hilarie Worley 262166 & Graham Palmer 07710 462535  
 Administrator Sarah: 07494 069540 [administrator@bromhambenefice.org](mailto:administrator@bromhambenefice.org)  
 Oakley Methodist Church:  
 Revd Paulette Tedd: 07591 139940 [paulette.tedd@outlook.com](mailto:paulette.tedd@outlook.com)  
 Church Steward: Jeanette Letch 825204





### In Memorium

Members of Oakley Speed Watch Group were sad to hear of the death of former member Arwyn Hughes in December 2024.

Arwyn was one of the founder members of Speed Watch in Oakley in the summertime of 2017 and resigned in 2024 in readiness for moving house.

In addition to him doing more than his fair share of operational sessions, Arwyn analysed the speed data collected by the Parish Council's equipment placed at points around the village.

Arwyn produced no less than 19 reports, the data from which was used to target problem areas on our local roads and was also used in discussions with other Councils.

May you Rest in Peace Arwyn. Paul Phillips.



## Oakley Village Hall

Church Lane,  
Oakley,  
Bedfordshire, MK43 7RJ

A well-appointed village hall  
Main hall with stage and PA system  
(Main hall is air conditioned)

Separate meeting room with bar

Well equipped kitchen

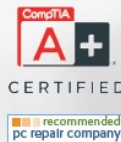
For information and bookings

please telephone 07788 796996



# Oakley.IT

maintain .IT  
repair .IT  
train .IT



**Jan Rymarz** – Principal IT Technician / Trainer

Fast PC and Laptop Repairs  
Clear and Friendly Training  
Fast and Efficient Service

Years of experience and services covering everything!

A few recent customer comments

"Great service"  
"Trustworthy & reliable"  
"Efficient & Affordable"  
"Highly recommended"



# 07401 250 118

help@oakleyit.co.uk | www.oakleyit.co.uk



# Oakley Rural Day Centre

Oakley Rural, The Old School, Lovell Road, Oakley, Beds, MK43 7RX  
Tel: 01234 824935 Mobile: 07733 227374  
Email: oakleyruraldaycentre@yahoo.com  
Web: www.oakleyruraldaycentre.weebly.com  
Registered Charity No: 1060283



## SPRING 2025

Our Day Centre provides our older people with a place where they can make friends in a warm and comfortable atmosphere. We provide various activities including crafts, word games, board games, bingo and other mentally stimulating activities.

We also provide chair based exercise classes. Our clients really enjoy taking part and we are finding them to be very beneficial. Choirs and entertainers also visit the centre.

We serve freshly prepared home cooked lunches and desserts together with tea, coffee and toast at the start of the day with beverages throughout. The Centre is open Tuesday, Wednesday and Thursday, 10.00am to 2.30pm.

For details of costs, advice and to book a visit please contact Lynne on 01234 824935 or 07733 227374.

**Enquiries welcome from Bedford and surrounding villages in North Bedfordshire.**



Please visit our website at [www.oakleyruraldaycentre.weebly.com](http://www.oakleyruraldaycentre.weebly.com)

The site is updated regularly with the latest news from the centre.

We also have a **Facebook** page. This will be updated with the latest news and photographs of events at the centre. The **Facebook** page can be found at [www.facebook.com/oakleyruraldaycentre](http://www.facebook.com/oakleyruraldaycentre)



We have articles in various publications throughout Bedford and surrounding areas to raise the profile of the centre.

## NEWS AND ACTIVITIES

A couple of pictures from our Christmas party week. We had so much fun playing games and had a fabulous Christmas lunch.

Many thanks to Morrisons and Richard Worker on behalf of the quizzers and Oakley Parish Council who donated prizes for our raffle.

We started the new year by making bird feeders. We have also painted small tin pots and took part in a games week. Activities to come are painting wooden hearts for valentines and bug houses to put out in the garden to aid nature.

For Chinese New Year we had sweet and sour chicken for lunch and made dragons from scratch art!





Select Travel Holidays  
Home of Cruise Select



24A Mill Street, Bedford

Exclusive event  
offers available to  
attendees



Join Select Travel Holidays for a special  
Afternoon Tea to uncover the unique joys of  
Small Ship Cruising with  Fred. Olsen Cruise Lines



**When:** Tuesday, 29 April 2025 at 2pm



**Where:** The Kingfisher (Barns Hotel),

Cardington Road, Bedford, MK44 3SA

(Ample free on-site parking available)



Indulge in a delightful Afternoon Tea



Discover Fred. Olsen's carefully crafted itineraries, including the  
Norwegian Fjords, Caribbean, Canaries, and more



Explore how small-ship cruising offers a friendly, relaxed, and  
intimate holiday experience

All for just £7pp\*

**Spaces are limited so reserve your place today:**

**01234 326 758 | [sales@selecttravelholidays.co.uk](mailto:sales@selecttravelholidays.co.uk)**

\*£7pp is redeemable against any holiday booking made through Select Travel Holidays within 12 months of the event.  
Non-refundable for non-attendance

## Bedford Christmas Tree Festival raises a magical £23,332 for two local charities

Thanks to this year's fundraising total of £23,332.53 Bedford's annual Christmas Tree Festival has now raised a quarter of a million pounds for two local charities over the last 25 years. How amazing is that?

Each year, the festival in St Paul's Church raises money for Bedford Hospital Charity & Friends and St Paul's church, with funds divided equally between the two good causes. Money raised for St Paul's goes towards its work of keeping the church open for worship and welcome and for its support of the vulnerable in Bedford. The Hospital Charity's money will contribute towards refurbishing two dedicated cancer care rooms on the children's Riverbank Ward, enabling patients to receive specialist treatment locally without needing to travel afar.

This year's total of £23,332 comes from many sources, including entry fees, sponsorship of the evening concert and the raffle. The daily 42 choirs and performers help to bring thousands of visitors through the church doors – all looked after by an indispensable team of volunteers.

Thanks go to the fantastic volunteers, many from Oakley, who helped to sell raffle tickets over the five days and to run the café on two days. An enormous thank you also goes to the Oakley residents who provided delicious homemade cakes. The raffle this year raised £2,714 and the café raised £1,962 which means a lot of coffee & cakes were sold!

This year marks the 25th anniversary of the Christmas Tree Festival and to mark the Silver Jubilee, the theme for 2025 is to be 'Christmas Past, Present & Future'. This year's event will last five days, from Wednesday, December 3 to Sunday, December 7.

Please contact Jean Davies to get involved. Mobile 07868016967 or email [jeannedave@sky.com](mailto:jeannedave@sky.com)





# Tudor Rose Patchwork

*"Bedfordshire's  
Foremost  
Threadcraft  
Emporium!"*



## **We're on Station Road**

**We have lots of general sewing  
needs – haberdashery and fabric!**

*Patchwork Fabrics, Kits, Patterns  
Workshops - Regular Groups  
Embroidery, Tapestry, Knit Yarns Beads,  
Goldwork, General Sewing  
Pfaff and Janome Sewing Machines  
Books, Dyes, Needles, Knitting Pins ...*

**Open Monday to Saturday  
9 a.m. to 5 p.m.**

**Oakley Park, Station Rd., Oakley, Beds. MK43 7RB  
01234 824983 – [Info@tudorrosepatchwork.co.uk](mailto:Info@tudorrosepatchwork.co.uk)  
<https://www.tudorrosepatchwork.co.uk>**

## Oakley's Own Coffee Shop



# for Coffee

Coffee, Tea, Chocolate, Cold Drinks

Hot Food, Cold Food

Breakfast, Lunch, Morning/Afternoon Tea

*All Food made on the Premises!*

**Open Monday to Saturday  
9 a.m. to 4 p.m.**

**Oakley Park, Station Road, Oakley - Phone 01234 824113**



You will not need reminding that the opening months of 2025 have seen perhaps more than their fair share of inclement weather. As a consequence, we have had a rather more leisurely start to the year than we anticipated and did not begin operations until February 5th. So, a pleasant afternoon was spent in Station Road. By contrast on February 13th in the early morning outside Lovell Home, the operation had to be curtailed somewhat, not because the operatives were not adequately prepared for the cold, but because the ink in the ballpoint pens became too cold to flow. Nevertheless, the speed of 100 vehicles was recorded and since the 99th was observed doing 36mph we thought the session seemed worthwhile.



This slower start gave us an opportunity to review what happened in 2024. County-wide the speed watch groups mounted 1500 operations as a result of which 5208 were reported for further action, roughly 3-4 reports per operation. By contrast, we did 16 operations, saw 1391 vehicles and only had to report 7.

This sounds very positive but we should remember that these are speeds observed where a warning triangle and a group of individuals wearing Hi-Viz are in clear view. Oakley is fortunate to have access to continuous monitoring devices which one of our volunteers sets up frequently.

In January we mounted an operation at 10 o'clock one morning on the Highfield Road rail bridge and saw 231 vehicles where just 3 vehicles were between 31 and 34 mph. In reality in that week 32,390 vehicles passed, 2117 between 31 and 34 mph and a

further **930 with speeds over 35 mph** with a maximum of **67mph** being recorded.

Another significant problem area for us is the bottom of the hill in Pavenham Road where in a week of the 8881 vehicles heading towards Pavenham, 1848 were clocked between 31 to 34 mph and 803 travelling in excess of 35mph, with a highest speed of 59mph.

Three of us are booked to attend the Bedfordshire Watch Team Coffee Morning where we anticipate discussing our findings and concerns with our local community policing team and personnel from Beds Police Traffic Management.  
Paul Phillips – Speedwatch Co-ordinator

## Phantom Sprayer

Spring is on it's way – we hope, after all this dreary cold wet weather. This is of course the time for dog walking, so hopefully all those lovely dog owners and their gorgeous dogs will remember to keep our streets clean, pick up the dog faeces with a plastic bag and bin it all, including around our fields, where lots of people walk and do not want to get a smelly mess on their feet as well as the mud and the farmers want clean crops.



Sadly someone walking their dog around Ruffs Furze area and the alley between Ruffs Furze and Dewlands is carefully collecting in a bag but then leaving the bags on the verges. The Parish Council have provided so many bins in Oakley, black and red bins, which can both be used, please don't leave these bags or raw material on verges, in bushes, on trees, just carry them to the nearest bin and bin them, this keeps our village very clean and tidy and a pride about their village for everyone.



## Boules or Pétanque

Have you ever tried Boules or to give its real name Pétanque? Why not come along and give it a try. All age groups welcome.

We have two rinks located in the grounds of the Sports and Social Club for all to use. All necessary equipment is kept in a locker by the rinks, the key is available from the club when it is open. Opening times are from 15.00 hrs Monday to Friday and from 12 noon Saturday and Sunday.

You do not have to be a member to play but membership gets you cheaper food and drinks.

We are planning a 'Come along and Try' event in the Spring-time as the weather improves. This will be advertised in the Newsletter when arranged.



*Bring your  
garden  
to life!*



**OAKLEY**  
BUILDING & LANDSCAPES



Artificial Grass | Building & Landscaping  
Driveways, Paths & Patios  
Timber & Composite Decking

---

 01234 915049     [info@oakley-landscapes.co.uk](mailto:info@oakley-landscapes.co.uk)  
 07803 749340     [www.oakley-landscapes.co.uk](http://www.oakley-landscapes.co.uk)





# Oakley Sports & Social Club

## Family & Sports Bar

We are excited to bring you the latest from Oakley Sports & Social Club and share some highlights and upcoming events...

### A Festive Celebration:

After the brilliant fireworks event featured in the last newsletter, we hosted our very first Christmas Market and Fayre.

The day was filled with a variety of market stalls, a few fun fair rides, a charming Santa's grotto complete with reindeer, and lively busker performances. The snow machines, a definite hit with the children, added an extra touch of magic. Many thanks to Oakley Parish Council for helping to sponsor part of the event – it was a community success, enjoyed by all ages, and we are already planning improvements for next year.



### New Year's Cheers:

Members welcomed 2025 in style with an evening of music from a DJ, a fun photo booth, and complimentary sparkling wine – just one of the many benefits of being part of our community.



### Committee Announcements:

Following a successful interim period, we are pleased to announce the formal appointment of Adam Worker and Kara Lawrence as our ap-

pointed Stewards. Their hard work in managing the clubhouse and supporting the Oakley Recreation Association has been greatly appreciated by all. At our January AGM, while no changes were made to the Committee, we extended our heartfelt thanks to Mick Hewitt for his many years of dedicated service as a Trustee following his departure from the role.

### Looking Ahead:

**Easter Celebration:** Join us on Sunday, 20th April, for an exclusive, members-only event featuring the exceptionally talented singer Cameo (yes, the one from ITV's "The Voice!"). The day will be rounded off with a BBQ and a bouncy castle for extra fun.

**Garage & RnB Event:** On 30th August, prepare for a bigger and better celebration! Enjoy live performances from various singers and DJs on a large stage equipped with professional lighting and sound, complemented by a massive video wall, an outdoor bar, and even more bouncy castles for the little ones.

**Fireworks 2025:** Mark your diaries for 1st November. We are already planning enhancements to surpass last year's spectacular display. Watch this space.

### A Friendly Community Reminder:

We have noticed that dog poo bags are sometimes left in and around our general waste bins for which they are not suited, or near the outdoor tap area where we leave a dog bowl despite clear signage. **We kindly ask all dog walkers to ensure that waste is collected and disposed of properly** away from our premises to avoid review of this use.

### Join the Fun:

2024 was a fantastic year and we have many more exciting plans for 2025 – many of which are exclusive to members. Membership is just £10 for the year and can be joined online at [oakleyssc.com/membership](http://oakleyssc.com/membership) or in person at our clubhouse.

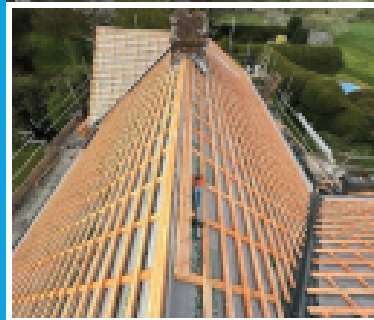
Don't forget to check our website and Facebook page regularly for the latest news and updates.

Robbie Bays  
OSSC & ORA Chairman  
(On behalf of the OSSC Committee)



# IMPORTANT!

Proud members of  
**Checkatrade.com**  
Where reputation matters



## EXPERT TEAM – WITH YEARS OF EXPERIENCE

- **FIND & REPAIR LEAKS** from £150
- **MOSS REMOVAL & MOT** from £295
- **REPOINTING CHIMNEYS** from £275
- **VALLEY, GABLE & RIDGE REPOINTING** £375
- **SPRAY FOAM REMOVAL** from £995
- **UPGRADE LOFT INSULATION** from £395



CHECK OUR  
5 STAR  
REVIEWS ON

Checkatrade.com  
Where reputation matters



## CALL THE TEAM

**07307 928427**  
**01234 634016**

## 10% OFF WITH THIS ADVERT

[info@ultimateroofcare.co.uk](mailto:info@ultimateroofcare.co.uk)

[ultimateroofcare.co.uk](http://ultimateroofcare.co.uk)



## Oakley Allotments

Spring is fast approaching and the doldrum months of January and February, when not much happens on the allotment, are nearly behind us as I write.

It is time to start planning for the new season and an exciting time to decide what to plant in the coming months. Not much can be done over winter, although this winter has been less severe than some have been and drier at times too. We have made trips to our allotment to do some tidying, pruning and... harvesting.

Looking back, last year's growing season was slow to start, mainly due to low temperatures and a lack of sun. Eventually, possibly 4 weeks later than usually expected, plants started to grow. Fortunately, the season was extended by continuing good conditions, but daylight, the main determining factor, becomes predictably less.

Although we have had some periods of frost severe enough to affect leafy greens, such as perpetual spinach and chard, parsnips



have yielded a reasonable crop for some weeks. Leeks continue to provide pleasing, quality cropping, making their inclusion (grown from seed in March) very worthwhile.

Last season it was obvious that some of our soil had become depleted over a number of years, despite having been enriched to some degree by the addition of compost, manure and other products, such as blood, fish and bone. Some crops were poorer than expected and additional feeding through the year did help. We also sowed green manure in its various forms - something which can be done to utilise and enrich newly cleared areas after harvesting.

One of our first tasks now is to provide the allotment with a good dressing of compost, manure and soil conditioner, except on beds where we intend to grow root vegetables which benefit from poorer soil, aiding root growth as they seek nutrients. We now look for offers, often available at this time of year at garden centres, to pur-

chase reasonable quantities of bagged products for treating our soil.

We also buy trusted compost products (always peat-free) as now is the time to start sowing seeds for the coming months - planting-out can proceed as frosts decline and those blissful, warmer days arrive... will they be later arriving again? We will see. It's all part of the anticipation.

As soon as the ground dries a bit more my paths can be mown and edged - they are looking very untidy as the grass continued to grow late into last year but it was always too wet to mow. The rest of the ground is fairly close to being ready, with minimal digging and little weeding necessary, as we kept everything in order through the year.

There is some springtime maintenance to be done at the allotments generally, such as repairs to edges of the main track following damage from various vehicle use in the inevitable winter wetness. Some damage was possibly due to contractors accessing the site to clear the drainage ditch by the orchard.

The main gate has been locked to general access following various incidents last year, including unauthorised tipping of aviary waste, encouraging rats to proliferate. Hopefully we can prevent further such problems.



Unfortunately, we have still had to bear some **inconsiderate dog walkers** leaving their waste behind on paths and tracks, or dumped in tenants' compost bins. There's a lot we'd like to say about such people... I'll not say it here.

At the moment we have a short waiting-list, including applicants from neighbouring villages. Oakley residents will continue to get priority however. Please contact me if you would like to be added to the list.

Happy gardening in 2025.

Steve Nicholas

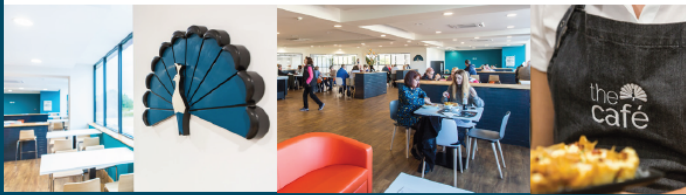


The Cafe at W&H Peacock is

# OPEN

View the salerooms for our upcoming auctions and then relax with a coffee and a slice of cake.

Our unique cafe in Bedford Auction Centre with free wi-fi comfortably seats over 100 customers. We serve cooked breakfasts, paninis and sandwiches, light lunches and snacks plus a range of hot and cold drinks.



Eastcotts Park,  
Wallis Way,  
Bedford,  
MK42 OPE  
01234 266 366

Visit  
[www.peacockscfe.co.uk](http://www.peacockscfe.co.uk)

for more details on our opening hours and to view our full menu.

## W&H PEACOCK

AUCTIONEERS & VALUERS



### Auction Sales & Valuations

Valuation, collection and auction service of individual items through to complete property and commercial clearances.

Call for a free no obligation quote or email [info@peacockauction.co.uk](mailto:info@peacockauction.co.uk)

SALE ENTRIES NOW INVITED  
[www.peacockauction.co.uk](http://www.peacockauction.co.uk)

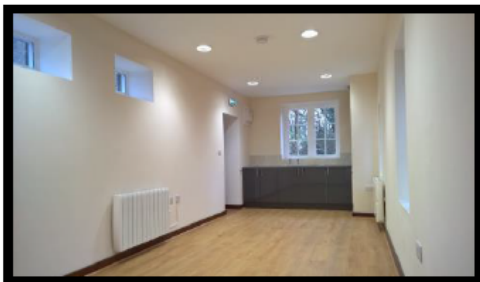
Eastcotts Park,  
Wallis Way,  
Bedford, MK42 OPE

# 01234 266366

## HIRE THE OLD SCHOOL

Lovell Road, MK43 7RX,  
Reg. Charity No. 1119074

- *Hall available for regular and one-off bookings at weekends*
- *Meeting Room available for regular and one-off bookings weekdays and weekends*
- *Meeting room now with self-contained facilities*



Please contact :

Bill Sellars 07980 745292

Email: [billsellars@theoldschooloakley.org.uk](mailto:billsellars@theoldschooloakley.org.uk)

Web : [www.theoldschooloakley.org.uk](http://www.theoldschooloakley.org.uk)



### SYDNEY HOWARD LOVELL MEMORIAL ALMHOUSES AT OAKLEY

The Lovell Homes is a small independent living community comprising two bedroomed bungalows and one/two bedroomed flats

Applicants over the age of 60 are invited to apply to go on the register of interest for a property - priority will be given to those with an agricultural or related background.

If you would like to be considered please visit the website [www.lovellhomesoakley.co.uk](http://www.lovellhomesoakley.co.uk)

Or contact the Clerk :

Mandy Newton

On 07736 466965

Registered Charity Number : 200480



# North Beds Ramblers

**North Beds Ramblers walk every Saturday**

**Please note change of start time for afternoon walks from March walks start at 13:30pm**

Come and join us for a walk. We walk every Saturday afternoon approx. 6 miles and Saturdays twice a month in morning for approx. 12 miles.

From March the first Saturday of the month introduces a morning "Ramble" – slightly shorter, slightly slower!

## March Walks

1st pm Sharnbrook "Ramble", 5 miles or pm Sharnbrook 6 miles or both for 11 miles

8th am Clophill South, 6 miles or pm Clophill Haynes 6 miles or both for 12 miles

15th am London walk Richmond to Hampton Court 8 miles or pm Harrold, 7 miles

22nd am Olney 12.5 miles or pm Irthlingborough, 6 miles

29th pm Sandy, 6.5 miles



## April Walks

5th pm Flitwick "Ramble", 5.5 miles, pm Ampthill 6.5 miles

12th am London – Unlock Church walk, 7.5 miles or pm Wilstead 6 miles

19th pm Willen, Milton Keynes, 7.5 miles

26th am Thrapston, 12 miles or pm Stoke Hammond, 6.8 miles

Contact; Margaret Sawyer 07780933729 Facebook; North Beds Ramblers

<https://www.ramblers.org.uk/north-bedfordshire>



**FRIENDLY LOCAL TRADESMEN WITH OVER 20 YEARS OF EXPERIENCE**

Transform your outdoor space with our professional gardening service. No job is too big or small.

### SERVICES WE PROVIDE INCLUDE:

- ⊗ Lawn Mowing and Treatments
- ⊗ Pressure Washing
- ⊗ Border Work
- ⊗ Patios
- ⊗ Tree Pruning & Felling
- ⊗ Garden Clearance & Waste Removal
- ⊗ Fencing

**Contact John Glos**

☎ 07811 155919

✉ [Glosgardening@yahoo.com](mailto:Glosgardening@yahoo.com)



Before



After

## How GoodOaks Homecare - Bedford is Supporting Unpaid Carers

Caring for a loved one at home comes with a unique set of challenges and we at GoodOaks believe there isn't enough support available for the millions of people who are balancing the care of a loved one with their own careers and family commitments.

The "**You Are Not Alone**" campaign aims to address this lack of support by providing resources for individuals who need extra help in supporting someone struggling to cope at home.

We are doing this by offering:

- Free information sessions, interviews with sector experts, and care tips.
- Downloadable care guides on a variety of topics, including dementia care, self-care, nutrition, hydration and more.
- A telephone helpline for anyone needing extra support or who has questions about care.

To learn more about our services, contact **GoodOaks Homecare - Bedford** on **01234 395100** or visit our website **[www.goodoakshomecare/yana](http://www.goodoakshomecare/yana)**



# Homecare you can rely on

Quote **GdOsB5** for a 5% discount from your first 6 weeks invoice (T&C's apply)

Scan me!

- ◆ Dementia care
- ◆ After hospital stay care
- ◆ Meal preparation
- ◆ Medication
- ◆ Personal care
- ◆ Companionship
- ◆ Help around the home

📞 01234 395100

✉ [bedford@goodoakshomecare.co.uk](mailto:bedford@goodoakshomecare.co.uk)

🌐 [goodoakshomecare.co.uk/bedford](http://goodoakshomecare.co.uk/bedford)



**GoodOaks**  
Quality Care at Home



# Oakley Kindergarten News



Although it seems a long time ago now, our Christmas celebrations at kindergarten included a Christmas lunch, party and Saturday morning sing-along.

In January, we welcomed new starters in each room and another new staff member has joined our Petals' room. Mrs Chrissie Trustram has joined us as a Level 3 Practitioner. Chrissie brings lots of experience and is settling in well.

I was lucky enough to have been included in HM the King's New Year's Honours list 2025 and have been honoured for services to Early Years and to the community in Bedford. I have both volunteered and worked in the Early Years sector since 1994, and I am a Medallist of the Order of the British Empire (BEM).

I have been at Oakley Kindergarten (formerly Oakley Pre-school) since 2005 and would like to thank all those I have worked with over the years to achieve quality childcare and education for all. My medal will be awarded by His Majesty's Lord-Lieutenant of Bedfordshire in March and I will be invited to a Royal Garden Party in May.

Our own garden has been very wet so far, but the children still venture out each day and are enjoying the mud and puddles that all the rain creates. As the winter months come to an end and we are hoping for some brighter days, the children have continued to care for the wild birds. They also took part in the Big Birdwatch again this year. We have celebrated the Lunar New Year and been fascinated by the rare phenomenon of the celestial alignment of planets across the night sky. Valentine's Day and Shrove Tuesday are also firm favourites to learn about at kindergarten and all the winter festivals help us through the dark winter days until spring finally arrives.



All Awards and Accreditation notices WW1 notices WW1 medals Resources

## Notice details

Type:  
State  
> British Empire Medal

Publication date:  
30 December 2024, 23:01

Edition:  
The London Gazette

Issue number:  
64607

Notice ID:  
4783908

Notice code:  
1130

## British Empire Medal

Civil Division  
**Central Chancery of the Orders of Knighthood**  
St. James's Palace, London SW1  
31 December 2024  
THE KING has been graciously pleased to approve the award of the British Empire Medal (Civil Division) to the undermentioned:  
B.E.M.  
**Sally Kate MARTIELLO**  
Manager, Oakley Kindergarten, Bedford  
For services to Early Years and to the community in Bedford.



We will be hosting our annual Easter Egg Hunt around the village over the Easter break. This will run from Saturday April 5th until Saturday 19th April. Maps will be available from Oakley Post Office. As a small charity, the fundraising events that we arrange do help us to raise funds for projects and to ensure sustainability for the future and your support is much appreciated.

## Admissions

If you would like to register your child for a place at kindergarten, please contact us on 01234 826452 or by email: [info@oakleykindergarten.co.uk](mailto:info@oakleykindergarten.co.uk) Our website is: [www.oakleykindergarten.com](http://www.oakleykindergarten.com)

Follow us on Facebook to keep up with our latest news and events.

For information on funding, you can see details on our website with a link to Childcare choices or alternatively you can contact the Family Information Service 0800 023 2057

Sally Martiello BEM

## Almond Garage Doors Ltd



- Servicing Bedford & Milton Keynes
- Spare Parts (including obsolete makes)
- Existing Doors Automated
- EMERGENCY Call Out Service
- New Sales & Installations (Free Quotations)



01234 828953

[info@almondgd.co.uk](mailto:info@almondgd.co.uk)

Fax: 01234 826024

College Farm, Oakley, Beds, MK43 7RX

[www.almondgaragedoors.co.uk](http://www.almondgaragedoors.co.uk)

## Uncomfortable with letting strange people into your home?

We are an **all-female** team of interior painters and decorators, working in the north beds village area. Fully experienced in hanging wallpaper, painting – including paint effects, restoring and repairing surfaces, wallpaper stripping and all general home decorating. We are all individually CRB checked, will provide references and testimonials showing the standard of our workmanship giving you peace of mind. We will come to your home to discuss your exact requirement, offer advice and produce a free written specification and quotation. We will then arrive on time, keeping disturbance to the minimum and deliver a quality job using only top quality materials.



**OAKLEY ANGELS**

*The all-female painting and decorating team*

- Trustworthy
- Experienced
- Guaranteed work
- Peace of mind
- High quality work at a reasonable price

Phone: 07989 778345  
or: 01234 822499



# Girlguiding in Oakley



Oakley has two guiding units – Rainbows for girls aged 4 -7, and Brownies for girls aged 7-10.

If you would like to enrol your daughter in either of these units or any other units locally, please register your daughter at <https://www.girlguiding.org.uk/information-for-parents/register-your-daughter/>

If you would like more information about the individual units before you register your daughter, you can use the contact details below.



## 1st Oakley Rainbows (Wednesdays)

Unit contact: Amanda Keen (Assistant Leader) [oakleyclaphamrainbows@outlook.com](mailto:oakleyclaphamrainbows@outlook.com)



## 1st Oakley Brownies (Fridays)

Oakley Brownies had a great end to the year, celebrating in style with a hot chocolate, wreath making and party games!

Our Christmas wreath was creatively decorated by the Brownies and displayed in St Mary's Church.



In 2025 we introduced 4 new Brownies to our group and have enjoyed a fun and busy half term! We have fitted in so much, from learning to cook healthy food and star gazing to abstract art and drawing tutorials. For our last session the Brownies enjoyed playing parachute games, decorating hearts for Valentines Day and putting their brains to the test in a memory game.

With all this wonderful creativity the Brownies have successfully completed their Art badge this half term. I wanted to take this opportunity to show off some of their beautiful work.



In March we have been invited by CPRE (Campaign to Protect Rural England) to take part in an exciting project, to plant a new hedge, in Riverside Meadow. If you think your child would be interested in taking part in some of these activities or community events, please contact [snowyowloakleybrownies@outlook.com](mailto:snowyowloakleybrownies@outlook.com).

If you think your child would enjoy being a Brownie please sign up on the website: [www.girlguiding.org.uk](http://www.girlguiding.org.uk) (register a child) or contact Kathy Jones - leader at 1st Oakley Brownies by emailing [snowyowloakleybrownies@outlook.com](mailto:snowyowloakleybrownies@outlook.com) Kathy Jones

## Harrold-Odell Country Park!

The good news is that daylight hours are getting longer, hopefully helping us to say goodbye to those winter blues. Spending time outdoors is good for our physical, as well as our mental, health and there can be few nicer places to spend your time than Harrold-Odell Country Park! At the time of writing, the winter aconites and snowdrops are in flower in the woodland near to the café and we look forward to spring which is getting nearer every day now!

When the sun does shine (which has not been often recently), the park does look beautiful!

With a spell of freezing temperatures at the end of January, we have seen more wildfowl on the lake than we would normally, but there are goosanders and goldeneye along with larger numbers of tufted ducks, gadwall, the occasional pochard or group of wigeon. On the 13th November, we had a rare visit from 11 whooper swans and on 2nd of February a pair of red-crested pochards were seen.

The volunteers have been concentrating on working on some of our other sites recently – did you know we look after Bromham Lake Nature Reserve, Browns Wood, Judges Spinney, Pavenham Bury, Stevington Country Walk and Yelow New Wood? We manage the habitats at these sites as well as maintain access to them. We try to give them the attention they need, but that can be a bit difficult when you look after a busy country park! Some of the work we do at these sites can include maintaining or improving wildflower areas, checking for fallen trees, coppicing, picking litter, cutting back overgrowing vegetation, looking after recently planted trees and even getting tree surgeons to carry out pre-emptive works to dead or dying trees.

The winter storms brought a few trees down in the park which have been made safe, but nothing major yet (touch wood!!!). We try our best to keep the park open and safe all of the time. During major storms or flooding events, it is worth thinking twice whether it is safe for you to travel to or walk through the park. I was working the weekend of 7th and 8th December with gusts of wind forecast as over 40mph and checking for fallen trees (with a hard hat and high vis jacket on). I recall checking the shelter belt and finding nothing and half an hour later, a regular dog walker reported a tree down over the path – trees or branches were falling down whilst people were walking around, so please pay good attention to your safety in extreme weather conditions.

You might not know, but we have a lost property box in the café for the items you may have dropped around the park. Valuables are held by the café or the park staff – enquire on 01234 720016 or in person. After a few months of not being claimed, items are donated to charity.

Our popular I Spot, Children's Activity and Crossword booklets are available to buy all year round for just £1 from The Dragonfly Café. They are all great activities to occupy the kids in your life at half term or at weekends and motivate them to learn and get round the park!

Every other Thursday, there are health walks around the park and/or local area. Meeting at 10:30am at the woodland entrance to the Dragonfly Café, they last about 1 hour. The dates are February 27th, March 13th & 27th & April 10th & 24th. More info can be found at <https://hocp.co.uk/get-involved/health-walks/>

We hope you enjoy your visits to our wonderful park.

From the Country Park staff and The Friends of Harrold-Odell Country Park.





## Bedfordshire homelessness charity appeals for team members to take part in this year's Harrold Pit Run!

Bedfordshire homelessness charity Emmaus Village Carlton is appealing for team members to take part in this year's Harrold Pit Run on Saturday 26<sup>th</sup> April.

Online registration for the Harrold Pit Run opens on Sunday 16<sup>th</sup> February and participants can choose to run for 11 sponsored organisations, including Emmaus Village Carlton.

The Harrold Pit Run is a three-mile race (just under 5k) around the lakes in the Harrold-Odell Country Park; the old gravel pits.

Participating is not only a fun and motivating experience, but also an opportunity to raise funds and awareness to support Emmaus Village Carlton in its vital work to end homelessness for vulnerable people.

### Are you...

An experienced runner that can help motivate others on our team?

A new runner who would like to join us and meet new people?

Someone who would like to start running? What a perfect time to start the 'couch to 5k program' with a great event for your end goal.

A family who would like to join in and train together?

Emmaus Village Carlton's Chief Executive, Donna-Louise Cobban, and em's Bistro Supervisor, Adam Hancock, (pictured) both ran for 'Team Emmaus Village Carlton' at last year's event and the EVC team are gearing up again for this year's run.

The route takes runners around the village of Harrold, encompassing the lakes in the country park, making it a perfect run for spring.

The event features four races, ranging from shorter children's races to a fully marshalled three-mile race. Whether you're a fun-runner, a fancy-dresser, or aiming for a personal best, everyone comes together at the start line in front of The Village Green.

Donna-Louise said: "Last year was the first time I'd taken part in the Pit Run and it was such a great community event. It's a fantastic family atmosphere and a scenic route which takes in the beautiful Bedfordshire countryside – all while supporting our charity. What a great thing to do this spring!

"We'd love to increase our charity team of runners this year and are appealing for runners to sign up to run it for our charity."



The charity also had a stand at the event last year, raising awareness of its crucial work supporting people who have experienced or faced homelessness.

Harrold Centre, which hosts the annual Pit Run, is a registered charity which benefits the residents of Harrold, Carlton and Odell. The Pit Run has been running since 1983 with only two missed because of covid, and a shortened course in 1998 due to severe flooding.

The bustling atmosphere of stalls, bar, band and runners on The Green are a great attraction for villagers and visitors alike and much appreciated as the social event of the year.

To register your interest directly with Emmaus Village Carlton, please email: [office@emmausvc.org](mailto:office@emmausvc.org)

More details of the event and online registration can be found here: <https://harroldcentre.co.uk/harrold-pit-run/>

NHIS tips for new or returning runners can be found here: <https://tinyurl.com/4try2c27>

# oakley Motorcycle club

Many thanks to all who took part in the annual OMC Xmas Quiz on 5th December. Also many thanks to Bernie Russell, Derek Brown and Jemma Grayson for all the preparation work as well as presenting the quiz. We had 32 participants split into 8 teams.

This year team "Nick, Nick, Nick" who have been the previous winners for the last couple of years were pipped to 1st place by team "The Wolves" who kindly donated their prize money to the East Anglian Air Ambulance.



**The winning team**

## OMC & OSSC GRAND XMAS DRAW

Many thanks to all members who purchased draw tickets. In total 1,875 were sold. This resulted in prizes worth close to £2,200 being purchased which also included a few donations.

The event raised over £300 for the EAAA



## EAST ANGLIAN AIR AMBULANCE

Following the presentation to the EAAA back in August 2024 that took the total amount raised by OMC for them to £46,503.

Since that date due to money raised by OMC members, Mr Ice Cream Man, AFC Oakley and friends Boxing Day football match, a Birthday cel-

ebration at OSSC incorporating Bedford Casino Hire and the pre Xmas events above, a further £1,391 has been raised taking our total to £47,895! As it is the OMC 20th Anniversary year it would be great to achieve the target of £50,000

Talking of anniversary year, we will not be holding our annual American theme night, instead replacing it with our 20th anniversary open day on **Saturday 2nd August**. This will be a daytime free entry event open to all involving stalls, stands, bands, bike show and much, much more! This will be a family day with something for everyone. More will be announced when confirmed.



One thing I can announce is that popular band The Kopy Katz are confirmed to play early afternoon that day. Check them out on Facebook and hear their new releases on You Tube.



## "Oakley " Rideout

Did you know there are 15 places with OAKLEY in their name in the UK and over the weekend of 5-7th September OMC are planning to visit 14 of them! This will involve visiting the Counties of Oxfordshire, Berkshire, Hampshire, Dorset, Gloucestershire, Powys, Shropshire, Northants, Norfolk and Essex before ending up back in the proper Oakley. A journey in excess of 800 miles! We decided to give the one near Edinburgh a miss as that may be an Oakley too far!

Roger "Baysie" Bays



# CLASSIC CAR MEET

## BEDFORDSHIRE

We are looking forward to returning to Oakley again this year and just hope for some decent weather which has blighted most of our meetings in the last two years.

We will be starting with a Breakfast run at Oakley Sports & Social Club on Sunday 30th March 9.00am to Midday which is the start of British Summer Time as well as Mothering Sunday. Then it will be every second Tuesday of the month from April to September from 6pm each evening closing with another breakfast run at the club on Sunday 5th October from 9am.

So dates for your calendar are

30th March

8th April

13th May

10th June

8th July

12th August

9th September

5th October

Looking forward to seeing you there!

Luke, Tich and the Beds Classic Car Team



**A couple of vehicles at Oakley  
in August 2024**



## Stop! Think fraud.

Fraud accounts for almost 40% of all crime. In just one year, 1 in 17 adults in England and Wales were victims of fraud. That's nearly 3 million of us.

1 in 5 businesses were also a victim of fraud over a 3 year period. In other words, fraud is rife and it can happen to anyone.

### Think you're immune from fraud?

Fraudsters can use highly manipulative methods to get us when our defences are down. Nobody is immune from fraud. We can all be more alert to the risks, and we can all do more to protect ourselves.

- Do you stop to check who's really contacting

**Action Fraud**  
National Fraud & Cyber Crime Reporting Centre  
**0300 123 2040**

you?

- Do you automatically trust offers and click on links?
- Do you use the same password for different accounts?
- Do you use 2-step verification?

For more information, please visit:

<https://stopthinkfraud.campaign.gov.uk>





# *Easter Celebrations*

AT OAKLEY SPORTS & SOCIAL CLUB

**20th APRIL MEMBERS ONLY EVENT**

FREE ENTRY | 1PM ONWARDS | BBQ | BOUNCY CASTLE

LIVE MUSIC FEATURING

AS SEEN ON ITV'S

*Cameo*

