



Oakley Newsletter

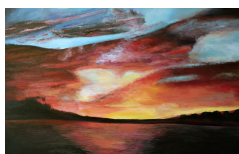


Summer 2022

Number 91

Look inside for

Oakley Show Categories and Entry Form	Art Award Competition Details	
Treasure Quest Visit	Youth Club Leaders Needed	Pre-school Jubilee party
Parish and Borough News	Bedfordia Farms Open Day	



**Front Cover : Sunset
By Laura Saunders**

The Oakley Newsletter

is published quarterly by Oakley Parish Council and delivered by parish councillors free to every house in Oakley – about 1,000 copies.

Opinions and information

in the Newsletter, both text and adverts, may not be endorsed by the Editor or the Parish Council.

Next issue

Final copy date for the Summer issue is 26th August 2022. The publishing date is 1st Sept 2022.

Advertising rates

Colour Advertisements
Quarter page: £30
Half page: £60
Whole page: £120
Four consecutive quarter page adverts - discount 10%

Black & white advert rates are available upon request.

Loose inserts, any size up to A4: £100
Invoices will be issued by Ann Paice, with payment to Oakley Parish Council.

Editor

Bill Chalker
13 Bevery Close
Oakley
MK43 7SH
07789 997733
bill@chalker.eclipse.co.uk



Printers

White Hart Press
58a York Street
Bedford MK40 3RL



Hello Children

look out for
Ten more
little ones



Parish Council News

Summer 2022

Hello All

Welcome to the summer edition of the Oakley Newsletter

I am writing this in glorious sunshine which we have been lucky enough to have enjoyed all month. Whilst I know that gardeners are saying that we need rain, it has allowed for some busy community events tidying up the village and preparing for the Jubilee. A huge thank you to the Oakley Scout groups who have helped us with our two biggest events so far, of planting trees in the river meadow and providing refreshments and helpers for the Community litter pick.

By the time this newsletter has been printed we will also have held our Beacon lighting at Browns Wood (lit by Richard Fuller MP) and the Recreation Association will have held their picnic at the Sports and Social Club, where the Parish Council sponsored the band. I hope you all enjoyed the long holiday weekend.

Grass cutting

At the start of the season, we had a lot of justified complaints about the grass cutting in the village. Our grass is carried out by the Borough Council contractors under contract to the Parish Council. In common with the rest of the Borough, the local grass cutting team have suffered from a shortage of staff, so they were initially doing sections of the village at a time instead of the whole village at once.

We hope that this situation is now resolved and that the grass cutting will be more consistent for the rest of the summer.

The verges and some areas will be left longer between cuts, to encourage wildlife, but if you are in any doubt, please report any areas of the village that you think have been missed to the Clerk so that she can follow up with the contractors.

Continued on page 3

OAKLEY PARISH COUNCIL

PARISH CLERK

Ann Paice
31 Radwell Road
Milton Ernest
Bedford, MK44 1SH.
07873 887370
parishclerk@oakleyvillage.co.uk

ACTING CHAIR

Jane Walker
(Parish and Borough councillor) 11 Dewlands
07952 879587
jane@janewalker.co.uk

Jonathan Abbott
(Parish and Borough councillor)
13 The Furlong 950868
jonathan.abbott71@icloud.com

Pat Olney
33 Station Road. 824384
pat.olney@btopenworld.com

Sara Fardon
61 Lincroft. 824516
sarafardon@yahoo.co.uk

Michael Frampton
The Little House, The Drive
822181
michael_frampton@btinternet.com

Phyllis Jones
35 Ruffs Furze 910187
phylmaj@gmail.com

Stephen Nicholas
44, Grenidge Way 824345
sbnicholas@gmail.com

Gerry Sansom
21 Pavenham Road.
823295
gerrysan-
som@btinternet.com

Robert Saunders
College Farm. 822328
rjsaunders5591@gmail.com

Paul White
20 Reynes Drive. 825472
paulwhite20rd@gmail.com



Tree works

The Parish Council has recently adopted a new tree policy which can be viewed on our web site. We have also commissioned a tree surgeon to survey the Parish trees and to trim them if they are posing a danger to pedestrians, cars or property or take them down completely if diseased. We will aim to replant any trees that we have to remove completely. These works have been going on over the last two months. There are also a lot of trees in the village that are managed by the Borough Council and these can not be trimmed by the Parish Council. The Borough council have their own arborist who will assess trees according to the Borough Council policy if requested.

There is more extensive tree work planned for the green space behind Brockwell where we are doing the groundwork before it becomes our newest community wild life area. The Pre-school are being given access to this area from their new building, so that they can take the children there as part of their curriculum. This gate will not be an access to the new building for dropping off or picking up.

Housing Developments

There are two larger housing developments in the village, that are currently with the Borough Council planning department. The 40 house development on Station Road is on part of site that was identified as suitable for housing in the village's Neighbourhood plan. However, at the moment the Parish Council is not supporting the application. We allocated 30 houses there not 40, plus the Developers plan also allows for a new road at the back of the site going down towards Lovell Road along the railway line, that is outside of the allocated area. We will continue to oppose it until these corrections are made.

The second site at the end of the houses on Pav-enham Road, opposite the allotments, has come before the council on a previous occasion. It was refused permission then and was not included in

the Neighbourhood plan. The Developer is arguing that the plan is now out of date which is not true, but it has prompted the Parish Council to ask the Neighbourhood Plan committee to review the current plan to ensure that we can still use it as a reason for refusing speculative applications such as this.

Island between the Bridges

For several years now, the Parish Council has leased the Island land between the bridges to enable residents to access it for leisure use. The landowner has now taken back the lease so it will not now be a public space. The bench that is in there will be relocated to the river meadow.

Oakley Recreation Ground

The Parish council has had several residents contact us about the ongoing events at the Recreation Ground, organised by the ORA. The ground is run by the Oakley Sports and Social club, not the Parish council so please contact them if you would like to discuss any of their activities. Their email is: info@oakleyssc.com. The Parish council do now have a representative on the ORA committee, so please copy us into any correspondence that you have with them. We are working closely with the committee to ensure that any concerns are addressed and we are grateful for their quick responses and willingness to engage.

Jane Walker Acting Chair

Parish Clerk's Working Hours

The Parish Clerk is currently working from home Monday, Tuesday and Wednesday mornings. She is also in the Old School Meeting Room (at the rear of the building) on Thursdays between 10.00am and 2.00pm if anyone wishes to visit in person. She does not work on Fridays but any messages or emails will be picked up on Monday.

Borough Council News

Council Tax Energy Payment

You will have heard and seen about the government's initiative to help households with rising energy costs, they have announced a £150 Council Tax energy payment for households living in Council Tax bands A to D, as their main home, and Band E where there is a disabled Band reduction.

If you do not pay your Council Tax by Direct Debit you will have now received an 'access code' to get the £150 energy payment.

This code is to ensure that people do not fraudulently apply for payments for homes they do not live in, so that people receive the payment they are entitled to. You can only get your unique access code by letter and email from the Council, it is not available from the Council's Customer Service Centre.

Once you have received your code, you can complete the form to claim this at www.bedford.gov.uk/counciltax. If you do not have access to a computer or smartphone or tablet, you can use the free computers at local libraries or call the Customer Services Centre for support on 01234 718097 and press option 4.

If you pay your Council Tax by Direct Debit, you do not need to take any action. You will receive your payment automatically after your first Council Tax payment of the year has been taken, to ensure that the Council has the correct details. These payments started in April and the majority of people who pay their Council Tax by Direct Debit have now been paid their £150 Council Tax Energy Payment.

Borough Council Announces Solar Panel Scheme

With the cost of energy continuing to rise a scheme has announced to encourage residents to come together to invest in renewables through a group-buying scheme for solar panels and battery storage – 'Solar Together Bedfordshire'.

Bedford Borough Council is working in partnership with Central Bedfordshire and Luton Councils as part of Solar Together Bedfordshire.

Solar Together Bedfordshire (www.solartogether.co.uk/bedfordshire) helps homeowners feel confident that they are paying the right price for a high-quality installation from pre-approved installers.

Bedford Borough residents can join the group-buying scheme which offers solar panels with op-

tional battery storage and EV charge points, as well as retrofit battery storage for residents who have already invested in solar panels and are looking to get more from the renewable energy they generate as well as increase their independence from the grid.

At this stage, the council are inviting people to register online to become part of the group. There is no obligation to go ahead with the installation. So if you are interested, please visit www.solartogether.co.uk/bedfordshire."

Northern Gateway Scheme

The final phases of the scheme are underway and should be completed by the end of June.

As part of this there will be overnight closures for resurfacing work to occur. This will have already started by the time you receive this newsletter.

These temporary road closures are anticipated to be in operation 20:00 - 05:00 hours each night that they occur.

Manton Lane Roundabout and approaches 16th May to 27th May 2022

Manton Lane (Clapham Road to Turner Way)

Shakespeare Road (Clapham Road to Byron Crescent)

(Manton Lane to Linden Road)

Manton Lane to Paula Radcliffe Way Roundabout 16th May to 17th June 2022

Phase 2 Paula Radcliffe Way Roundabout SOUTHERN 25th May to 11th June 2022

Paula Radcliffe Way Roundabout Southern (Clapham Road to Great Ouse Way)

Paula Radcliffe Way South Bound (Roundabout to Oakley Exit)

Fairhill 25th May to 17th June 2022

Phase 3 Paula Radcliffe Way Roundabout NORTHERN 8th June to 17th June 2022

Paula Radcliffe Way Roundabout Northern (Great Ouse Way to Clapham Road)

Paula Radcliffe Way North and South (Roundabout to Oakley exit)

Phase 4 Clapham Road Village 13th June to 22nd June 2022

Clapham Road (Paula Radcliffe Way roundabout to o/s Towers)



Continued on Page 6



Hazel Kaye Hair, Beauty & Wellbeing Clinic Tel: (01234) 826502



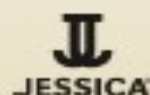
Voted No. 1 Salon in the UK

Our Services

Wash, Cut & Blow dry
Restyle
Balayage
Colour (incl Correction)
Ladies, Gents & Children
Gents Skin fade
Hair loss solution



Skincare specialists
Facials
Gels, Manicure &
Pedicure
Waxing
Lashes & Eyebrows
Weddings

Massage
Make up, incl Bridal
Semi permanent
Makeup
Tanning
Ear Piercing
Facial Aesthetics



Stockist of Premium Hair, Beauty brands, & gift vouchers
Premium fragrances including Savile Row Men's Grooming
designed at Hazel Kaye.
Exclusive Savings.

Book/Purchase Online

40 High Street, Oakley, Beds, MK43 7RG  
Tel:01234 826502,e:hazel@hazelkaye.com, www.hazelkaye.com

Local Plan 2040

The Council has a legal responsibility to set Local Plans, deciding where growth and development will take place in Bedford Borough in future years; from homes and jobs to schools and infrastructure.

Following changes to national policies and the setting of new housing targets by the Government, the Local Plan 2040 is an update of the recently agreed Local Plan 2030, which was adopted in 2020. The majority of the existing planning policies are still up to date and do not need to change.

The Local Plan 2040 therefore focuses mainly on a strategy to guide housing and employment growth to meet the government's targets, and the infrastructure needed to support it.

It also updates planning policies where these have developed since the 2030 Local Plan was written. These include those to do with climate change, environmental quality, the town centre, affordable housing and self and custom build homes.

The Council is legally obliged to plan for a set number of homes every year. New affordability data published by the Government in March 2022 has seen an increase of 40% in the number of homes that must be planned for in Bedford Borough – to 1,355 per year to 2040.

Whilst there are still areas of uncertainty around national plans which impact the Borough, including the Oxford – Cambridge Arc and the precise route for East West Rail, the Council is legally obliged to submit an updated Local Plan by January 2023.

At the April meeting of the Council Executive, they considered the Local Plan 2040 for its next and final stage of consultation. It was agreed the Officer responses to the consultation comments received during the Draft Plan: Strategy Options and Draft Policies consultation June 2021.

That the Local Plan 2040 'Plan for Submission' and its evidence base documents for the purposes of public consultation be agreed, and that it also be agreed that the evidence base documents will be the subject of a further Executive Decision prior to the commencement of the consultation.

This will enable the preparation of the Local Plan 2040 to progress in accordance with the recently updated Local Development Scheme and that the consultation this summer will be third on this Local Plan, and the final one before the plan is submitted to Government in January 2023.

Councillor Jon Abbott

Telephone: 07784 549180

Email : jonathan.abbott71@icloud.com

All change at the Youth Club.

After many years running the Youth Club and making it a much-loved environment for young people Dawn Pither has decided to step down as Youth Leader and hand the baton on to someone new. Dawn has been fantastic in creating a most fabulous atmosphere for young people, resulting in a thriving youth club. The five years she has been running the Club have provided happy memories of good times enjoyed by many young people.

The Youth Club Committee and all at the Parish Council would like to thank Dawn for being so committed to all that she has done.

During the Covid period the Youth Club opened and closed according to restrictions. Dawn has been ably supported by Emma Daniels and Mason Thomas who have both helped the Youth Club operate smoothly when it can open. Emma and Mason are also stepping down. The team recently welcomed Julie Taylor who has joined as youth club assistant.

Consequently, we would like to ensure this prized asset for Oakley Village can continue to flourish from September. **We are recruiting for two vacancies – a new Youth Club Leader and a Youth Club Assistant. Details are in the advert opposite.** If you are interested, or you know of anyone who would love to do these roles then please ask them to make contact.





JOB ADVERT

OAKLEY YOUTH CLUB

Youth Club Leader and Youth Club Assistant

Starting September 2022

Oakley's Youth Club has been running for many years, each Friday night during term time and is much loved by young attendees.

We are seeking a **Youth Club Leader** to take responsibility for running the club each week, planning activities, ensuring entrance fees are collected and tuck shop stocked and organised, organising the evening and ensuring the club operates in a safe way by following agreed procedures. Contracted for 4 hours per week.

They will be supported by two **Youth Club Assistants** to help supervise activity, organise games, engage and support the Youth Club Leader. Contracted for 3 hours per week. One Youth Club Assistant is already in situ.

If YOU like working with children, are creative and responsible and would like to take this Youth Club to the next stage of its development then these roles are for you. You may have experience of working with children, be a parent, or just fancy something different.

We take the governance and safeguarding of the Youth Club very seriously and have a clear set of rules and procedures in place. DBS checks will be carried out.

Competitive rates of pay apply.

The Youth Club is fully supported by the Parish Council and there is a small committee, of Chair, Secretary and Finance Manger to help with the running of the Club.

Candidates are being sought now ready for a September start. Please submit your CV to Sara Fardon, Secretary at oycsecretarial@gmail.com

Terry Youngman Art Award



Anne Youngman and Oakley Primary Academy are delighted to be collaborating in the introduction of the Terry Youngman Art Award. Terry Youngman was a talented artist, resident in Oakley and well-known locally, whose drawings and paintings graced the cover of Oakley Newsletter for ten years.

Terry's natural ability for art was encouraged during his school years by an inspirational art teacher. This sparked a lifelong love of art, an appreciation of the importance of teachers and a desire to inspire young people to realise their talents.



Terry left behind a terrific legacy and we should like to honour and celebrate this with the presentation of an annual award in his name. Oakley Primary Academy and Anne Youngman will present an award in each key stage to a child who has shown exceptional progress and talent in art throughout the year.

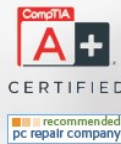
Oakley Primary Academy will also be promoting the child-friendly categories of the Oakley Show with the pupils of the school. We hope to have increased participation from budding young artists as the years go on!

Anne Youngman



Oakley.IT

maintain .IT
repair .IT
train .IT



Jan Rymarz – Principal IT Technician / Trainer

Fast PC and Laptop Repairs
Clear and Friendly Training
Fast and Efficient Service

Years of experience and services covering everything!

A few recent customer comments

"Great service"
"Trustworthy & reliable"
"Efficient & Affordable"
"Highly recommended"



07401 250 118

help@oakleyit.co.uk | www.oakleyit.co.uk



Treasure Quest

I always listen to Three Counties Radio on Saturday morning, a very light hearted programme called Treasure Quest, where the "treasure" is a person in Beds/ Herts or Bucks. This morning their radio car took them to Cranfield, so nice and local, the clues moved them about the area, they went to Harrold and the last clue took them to Oakley.



The clue was to find the "cackley berries in a happy place" something like that. It was such fun following them on the radio as they got to the Bedford Arms. By then people rang in to say "cackley berries" were eggs and then they were told to go to Queens close, opposite the post office.



They ended up in Merri Christmas Trees who were having an Easter egg hunt and the "treasure" was Julian. Great fun.
Sue Brecknock



HASLAM ELECTRICAL SOLUTIONS

NICEIC Approved Electrician

Domestic

Commercial

Industrial

For a free quotation please call or email Dave

Tel: 07385 193915

Email: haslamelectricalsolutions@gmail.com



GARDEN WALLS TO COMPLETE EXTENSIONS

BRICKWORK | POINTING | DRAINAGE | WINDOW / DOORS

ALTERATIONS | GARAGE CONVERSIONS | KNOCK THROUGH

UPVC WINDOWS & DOORS | PLASTERING | CHIMNEYS | +MORE

WWW.BEDFORDBRICKLAYING.CO.UK

07732 428 993



Oakley Rural Day Centre



Oakley Rural, The Old School, Lovell Road, Oakley, Beds, MK43 7RX

Tel: 01234 824935 Mobile: 07733 227374

Email: oakleyruraldaycentre@yahoo.com

Web: www.oakleyruraldaycentre.weebly.com

Registered Charity No: 1060283

NEWSLETTER Summer 2022

Welcome to our latest Newsletter. If anyone has access to the internet please visit our website, www.oakleyruraldaycentre.weebly.com The site is updated regularly with the latest news from the centre.

We also have a **Facebook** page for anyone who has a **Facebook** account. This will be updated with the latest news and photographs of events at the centre. The **Facebook** page can be found at www.facebook.com/oakleyruraldaycentre We are also producing articles in various publications throughout Bedford and surrounding areas to raise the profile of the centre.

DAY CENTRE

Our Day Centre provides our older people with a place where they can make friends in a warm and comfortable atmosphere. A range of activities including crafts, entertainment, quizzes and good old conversation are at the heart of our day.

We serve freshly prepared home cooked lunches together with tea, coffee and toast at the start of the day and beverages throughout. The Centre is open Tuesday, Wednesday and Thursday.

PLACES AVAILABLE

We currently have places available on all three days.

For details of costs and advice please contact Lynne on 01234 824935 or 07733 227374.



Enquiries welcome from Bedford and surrounding villages in North Bedfordshire.

QUEENS PLATINUM JUBILEE

We have been preparing for our indoor street party for the Queens Platinum Jubilee. Clients have made paper chains and individually decorated bunting as well as decorating their own hats to wear at the party!

While taking part in these preparations clients have been reminiscing about previous Jubilee parties and sharing their memories.

Angela will be providing party food for the day including sandwiches, quiche, sausage rolls, pork pies with trifle and cakes for dessert. We will all toast the Queen with a non alcoholic refreshing fizzy drink!

We will also be playing various party games including royal bingo and pass the parcel. We will let you all know how it went in the autumn newsletter.

AGE UK

Age UK will be visiting the centre to give advice on what help and services may be available to our clients. We appreciate what advice and help they can provide and I am sure it will provide useful information in these difficult times.

MERRI FLOWERS & CHRISTMAS TREES

Welcome to our overview of what we have been up to at your very local cut flower and Christmas Tree farm. I do believe we are nearly there when it comes to tending to our Christmas Trees. The plots we plan to open in 2022 have been base and side pruned and now we have to start on top leader controlling.

May I also take this opportunity to thank everyone in the village who came to our Easter Egg Hunt within our trees. We raised nearly £300 for St Johns Hospice in Moggerhanger, and were also featured on the Three Counties Radio, TreasureQuest, because Julian was 'the treasure', which attracted customers from further afield. We think this will now become a regular seasonal event, so if you did not attend this year, be sure to come next Easter.

April was a strange month this year. We did not have one rainy day, which put us back a bit, but we are back on track now. April is always full on seed sowing for us followed by potting on. Usually this is the month we get our flower plots ploughed up, but this year the ground has been too hard to direct sow anything.

Thankfully the showers we hoped to get in April appeared in mid-May. We have been frantically catching up with planting up our Pick Your Own Flower plots for events due to happen from July to September and our Dahlia plot for 'Simply Dahlia' events in September.

As well as planned events, we hope to feature a number of 'pop-up' flower events this year, including Pick Your Own sweet peas. Please look out for announcements on the Oakley Facebook page, because they will appear at short notice.

By the time you read this article it will be June, the month we kick start our Friday Flower Sub-



scriptions. If I was to scan our flower plots today, I would be panicking because there are hardly any flowers flourishing, but Mother Nature has a habit of 'doing her thing' and she has not let us down (yet).

We are also hoping many of you will be tending to your plants for your Oakley Village Show in September, because Rachelle will be judging the flowers again.

Thank you for reading our Summer Edition article.

Rachelle & Julian Merrill.



The Barn, Cardington Hosts its First Tasting Day with Badgers Chilli Kitchen

On Friday 29th April, Lee, owner of Badgers Chilli Kitchen, joined us for our first tasting day at The Barn.

With lots of exciting changes at The Barn including improvements to the inside and outside café areas, changes to the menu, and new local producers stocked in our farm shop, we were really looking forward to the launch of our tasting days and events. We kicked things off with a tasting day for chilli lovers, with Lee sharing his range of seasonings, relishes, sauces, and nuts.

To give customers a flavour of how to use his seasonings, Lee had mixed them with natural yoghurt so that people could try a taste. He'd also been cooking up some chicken and meatballs, so you could try the products with these as well.

All of the products ranged from mild to extra hot, so there was something for everyone to enjoy and see how hot they could handle! From the lemon drop seasoning, to the now infamous Original Reaper chilli sauce, people had lots of fun tasting different products.

Lee said: "I had an excellent day at The Barn on Friday, getting to meet some regular customers of theirs is always a winner. I always have fun at these sorts of events as I can really get to interact with my new/ future customers.

The next event planned in the diary is a Badgers Chilli Kitchen themed BBQ, which is happening on Sunday 12th June. We will focus on flavour as well as a couple of Extra Hot dishes for the brave!!"

There were recipe cards for Chinese pan roast spicy duck with beetroot & orange rice noodles and sesame greens and Marinated Lemon Drop chicken burger with grilled courgette, spinach and feta salad available to pick up, so that people could find some recipe inspiration too. Keep an eye out for more recipe cards coming to The Barn soon for some recipe inspiration.

Lee will be back on Sunday 12th June for the Badgers Chilli Kitchen BBQ, so do come along to see him there! We'll be sharing more information on our Facebook page 'The Barn, Cardington' and at The Barn.



Oakley Educational Foundation

This Foundation exists to assist young people between the ages of 16 and 25, who live in the Parish, with grants towards the cost of books and tools, etc. in furtherance of their education.

Applications are accepted in the months of May and November and must be accompanied by receipts of purchase. Application forms can be obtained from the Clerk, Louise Tunley.

For further information, or for an application form, please contact Louise Tunley on 07917 462213, by post at 19 Goldington Road, Bedford, MK40 3JY or by email at louise_tunley@yahoo.co.uk.

Oakley Village Hall - have your say

Do you hire the Village Hall? Do you attend classes or functions there? Do you vote there?

Join our committee and have your say on how the Hall should develop and how it is run.

Find out more from our Secretary:
Ruth Bender | r.bender@cranfield.ac.uk | 07941 679204



The Cafe at W&H Peacock is

OPEN

View the salerooms for our upcoming auctions and then relax with a coffee and a slice of cake.

Our unique cafe in Bedford Auction Centre with free wi-fi comfortably seats over 100 customers. We serve cooked breakfasts, paninis and sandwiches, light lunches and snacks plus a range of hot and cold drinks.



Eastcotts Park,
Wallis Way,
Bedford,
MK42 0PE
01234 266 366

Visit
www.peacockscfe.co.uk
for more details on our opening hours and to view our full menu.

W&H PEACOCK AUCTIONEERS & VALUERS



Auction Sales & Valuations

Valuation, collection and auction service of individual items through to complete property and commercial clearances.

Call for a free no obligation quote or email info@peacockauction.co.uk

SALE ENTRIES NOW INVITED
www.peacockauction.co.uk

Eastcotts Park,
Wallis Way,
Bedford, MK42 0PE

01234 266366

Linch Furlong



Linch Furlong has been glorious this spring, starting with the violets that carpeted the area in March. The sloe bushes, the apple and crab apple trees have been in bloom from April onwards.

The white dead nettles and the ground ivy were also blooming in March and April and the cowslips just peeping their heads out in the same months. Later in April the cowslips were in full bloom all over the nature reserve along with daisies and so many dandelions this year. The hawthorn trees were budding and were finally out at the beginning of May.

The Ash trees also came into leaf this month. It will be interesting to see whether we have lots of rain this year or will it be hot and dry? As the rhyme states:

If Oak leaves before Ash, we will have splash,

If Ash before Oak, we will have soak.

My father always stated we would have poor weather, windy and showers, when the candles were out on the Horse Chestnut trees early. Certainly, true this year.

I am looking forward to seeing the Bee and Pyramid Orchids this year. Start searching in June. The Dog Daisies should start appearing with the wild carrot. Daisy chain making was a good pastime on a sunny day with a lovely picnic. Families might try picnicking and daisy chain making.

Last year I saw several families picnicking on the grass. Why not take a wild flower book and try to identifying the flowers and grasses? The blackberry flowers are starting to open and I am looking forward to eating the blackberries in the Autumn. The bees are enjoying all the flowers at the moment and I saw some butterflies.

It has been good hearing all the birds when exploring Linch Furlong as I am sure you will be.

Pat Olney

Origins of Oakley Preschool

The new building is up and work is continuing on the landscaping so that it can become a forest school. This will be an enormous asset so that the children can become interested in wildlife and hopefully have a lifelong interest in conservation.

I have had a request to tell the story of how the preschool started.

The building of the houses started in Ruffs Furze at 1975/76. We had many young mums starting at the Womens Institute and nowhere for the children to play. Previously there were so few children in the village that we used to meet in one another's houses. As there were many more young children in the village it was suggested that we should start a playgroup.

A small committee was organised from the parents who attended the W.I to investigate the formation a Playgroup. We got in contact with the Playgroup organisation to find out how we should proceed. First we had to find premises. The Methodist Church had a room available that could be converted. Funding was obtained and planning permission granted. Sue Harper, a qualified teacher, was appointed and the Playgroup started in 1978 with 12 children; 11 children from Oakley and one from Pavenham.

My youngest daughter started in September 1978. She had a term in the playgroup and started at the school in the January 1979 when she was 5 years old. The primary school was then at the Old School in Lovell Road. My eldest daughter started school when the reception class had only a few children but by the time Ruth was at school the reception class had approximately 20 children.

It took a lot less time in those days to get funding, a hall and staff than it has taken this time. The committee has taken 10 years to get the funding and building consent and project manage the site. I had a tour and was impressed with the facilities. The committee has worked extremely hard to get the building up and they hope to start in September. The playgroup morphed into a preschool along the way.

I am proud of the way the preschool has developed and educated our young children in their early years. I wish to thank everyone who has contributed to that over the years.

From small beginnings a mighty Oak has grown.

Pat Olney



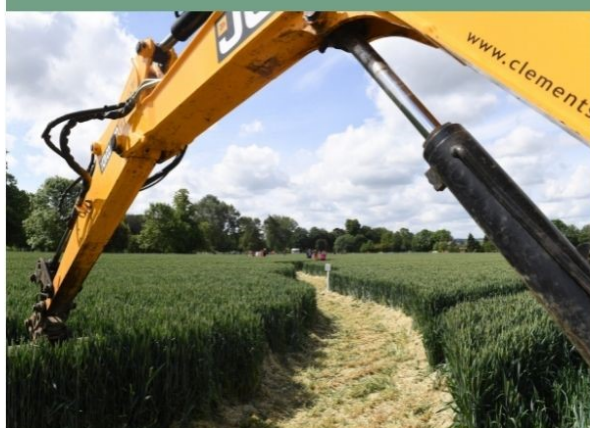
Bedfordia Farms



Open Farm Sunday
www.farmsunday.org



Sunday 19th June 2022 - 11:00am - 4:00pm
Bedfordia Farms - Milton Ernest, Beds, MK44 1YU



Join us for a
family fun day
on the farm!

- Part of LEAF (Linking Environment and Farming) initiative.
- All profits will be donated to national & local charities.
- FREE entry and parking.
- Farm machinery display.
- Tractor and trailer rides.
- Farm walks
- Lots of stalls including ice creams and tea tent.
- Games.
- Hog roast.
- Countryside displays.

FOR MORE INFORMATION
AND UPDATES VISIT
BEDFORDIA.FARMS.CO.UK

Oakley Village Show



Sunday 18th September 2022

A programme for Oakley Show will have been delivered to you with this newsletter. We hope that you will have a read and find a class, or even better classes, that you can enter this year. We have tried to have something for everyone whether you are a grower, baker, crafter or artist.

We will be regularly updating our Facebook page between now and the show and it will be good to hear any comments or questions you may have. Contact details are in the programme but just in case you did not get one you can either message us on Facebook or call on 07778 537427 and we will arrange to get one to you. Oakley Show Committee

Classes

1. 3 Onions
2. 2 Sweetcorn
3. 5 runner beans
4. 1 bulb of garlic
5. 3 carrots
6. 5 potatoes
7. 3 courgettes
8. 1 squash / pumpkin
9. 5 tomatoes
10. 5 chillies
11. 3 beetroots
12. Collection of any 6 vegetables, 1 of each
13. Largest potato
14. Longest runner bean
15. Oddest vegetable

Flower Classes

16. Arrangement of your garden flowers in a jam jar
17. 3 stems of chrysanthemums (single or spray)
18. 3 dahlias
19. Largest sunflower head (diameter of seedhead will be measured)
20. Posy of garden herbs

Fruit Classes

21. 3 cooking apples
22. 3 eating apples
23. 3 pears
24. Any 10 berries
25. Collection of any 4 fruit, 1 of each

Preserves

26. 1 jar of chutney or pickle
27. 1 jar of jam
28. 1 jar of curd
29. 1 jar of marmalade
30. Home made soft drink
31. Flavoured spirit e.g. sloe gin

Home Cooking

32. 3 macarons made to our recipe
33. Cake containing a vegetable
34. 3 savoury biscuits
35. 3 pieces of fudge
36. 1lb loaf of soda bread
37. 3 jam or curd tarts with home made pastry

Art

38. Photo "Oakley Life"
39. Painting/drawing

Craft

40. Handmade greeting card
41. An item made with yarn
42. An item made with fabric
43. Your hobby corner

Childrens Classes (Age Groups in programme)

44. Jubilee Crown
45. Decorated Gingerbread person
46. Painted / Decorated Pebble
47. A creature made from recycled materials
48. Painting / drawing "Oakley Life"

Ringling church bells is good for fitness!

Bells are the loudest and largest instruments in the world. They are also a great way of getting gentle physical exercise.

Although bells can be heavy, some can weigh 4,500kg, ringing them is mainly down to technique rather than strength. The movement and technique required when ringing bells has been recognised by health experts as being good for toning the core abdominal muscles and glutes, for working biceps, quads and calves and developing muscle endurance (ref: bellringing.org). Bell ringing also improves coordination and reaction times. And we cannot forget the wonderful social benefits!

We are seeking new members to join us. We are a very friendly bunch and are happy to teach those new to bell ringing and encourage former ringers who may feel a bit rusty.

We practice on Friday evenings from 8pm to 9:15pm and ring on Sunday mornings before the services at St Mary's. If you would like to come along on a practice night to see what it is all about and to have a go, please contact our Tower Captain, Bill Sellars on 07980 745292 or email thesellars@btinternet.com.



Shelley Abbott

Sales, Lettings & Auctions

Lane &

HOLMES

Est. 1985

MAYFAIR
OFFICE GROUP

move
withUS



BRITISH
PROPERTY
AWARDS

2021



GOLD WINNER

ESTATE AGENT
IN BEDFORD



Have you seen... We **won!**
For a winning service, **talk to us.**

01234 327744 | sales@laneandholmes.co.uk | laneandholmes.co.uk

OAKLEY PARISH COUNCIL

Summary of Accounts - Financial Year ending 31 March 2022

Opening Bank Balances	£	Payments	£
NatWest Bank current balance at 31/03/21	£13,872.55	Administration (includes subscriptions)	£3,843.25
NatWest Bank reserve balance at 31/03/21	£7,255.95	Insurance	£2,076.96
Nationwide investment bond 31/03/21	£59,746.27	Grass Cutting	£10,204.25
Hampshire Bank Investment bond	£83,748.89	Grounds-Maintenance (includes tree works)	£280.00
less uncleared payments	£0.00	Wages, Tax, National Insurance, Pension	£21,429.12
Total cash in hand	£164,623.66	S. 137 Payments (grants to local organisations)	£5,072.80
Receipts	£	Capital Spending (village signs and litter bin)	£1,575.00
Precept	£54,700.00	Cricket Field & Riverside (rent)	£847.26
Agency Services (Grasscutting - Bedford BC)	£1,280.90	Allotments	£1,677.60
Allotments (rent)	£994.95	Bus shelters	£0.00
Community Infrastructure Levy	£0.00	Community Orchard	£0.00
Donations	£0.00	Christmas lights	£2,820.00
Grants (Bedford BC grant for Pre-School paid via Council)	£25,000.00	Grants (Bedford BC grant for Pre-School paid via Council)	£25,000.00
Interest	£254.20	Linch Furlong	£927.00
Newsletter & Directory advertisements and sponsorship	£6,978.00	Play area (inspections & repairs)	£2,678.50
VAT recovered from 2020/21	£5,345.63	Publicity (Newsletter, Directory, Website)	£3,600.00
Zoom hosting	£93.88	VAT refund due on above payments	£3,690.54
Sub total	£94,566.66	Sub total	£85,722.28
Closing Bank Balances		Closing Bank Balances	
NatWest Bank current balance at 31/03/22	£23,823.00	NatWest Bank current balance at 31/03/22	£23,823.00
NatWest Bank reserve balance at 31/03/22	£7,256.68	NatWest Bank reserve balance at 31/03/22	£7,256.68
Nationwide investment bond 31/03/22	£59,999.74	Nationwide investment bond 31/03/22	£59,999.74
Hampshire Bank Investment bond	£83,748.89	Hampshire Bank Investment bond	£83,748.89
less uncleared payments	£1,360.27	less uncleared payments	£1,360.27
Total cash in hand	£173,468.04	Total cash in hand	£173,468.04
Total	£259,190.32	Total	£259,190.32

£99,683 plus £20,505 interest of the total cash in hand figure is ring fenced for maintenance of The Furlong, the Grange & Parsonage Close open spaces and £3,259.90 for maintenance of the High Street bus shelter.

of which £123,448 ring fenced

2021/22 Parish Council Accounts



In 2021/22 income amounted to £94,566.66 and expenditure to £85,722.28. Income increased by approximately £18,136 largely because a £25,000 Bedford BC Rural Grant was received by the Parish Council for payment to Oakley Pre-School.

This was offset by a decrease in VAT receipts of £3,078 as capital expenditure was less than in 2020/21 than in 2019/20; a reduction in bottle bank income of £2,849 to none in 2021/22 as the bottle bank was relocated outside the parish because of fly tipping and noise and a decrease in allotment income of £1,231 because of a Ward Fund grant of £1,125 for ditch works in 2020/21.

Expenditure increased by approximately £8,526. The Rural Grant of £25,000 was paid by the Borough Council to Pre-School through the Parish Council accounts. This was offset by reductions of £7,000 in grounds maintenance because of the large number of tree works carried out in 2021/22; £3,225 for the Newsletter and Directory as additional monies were spent on the website in 2021/22 to meet new accessibility requirements plus the printing costs for the final Newsletter of 2021/22 and the Directory have yet to be invoiced.

Also, £2,542 less was spent on play area repairs; £1,927 less on donations as the Youth Club required less funding since it had been closed for much of 2020 so reserves were higher than usual and £1,655 less on VAT payments as Council expenditure, excluding the Rural Grant, was less than in 2020/21.

Donations totalling £5,072.80 were made to the Pre-School, the Village Hall, the Youth Club, The Day Centre, the Parochial Church Council, the police Bobby Scheme and the RBL for a poppy wreath.

Phantom Sprayer



It is great to see so many lovely dogs in Oakley, but sad to see an increase in fouling of our greens and footpaths.



I know most Oakley dog owners clear up and properly bin their dogs mess and are more than dismayed that some people do not, but the persistent few still leave the mess for people and especially children to tread in.

The summer is coming, our lovely Oakley childminder brings the babies for a little picnic when the weather is good. I am sure no-one wants to see one of those touch or fall on such fouling.

The children come onto our greens too to play their ball games and it is not fair on them or us to leave this mess to contaminate them or their footballs. There will possibly be parties on some of our greens for The Queen's Jubilee – please you folk, you know who you are, be considerate.

The sight of bags of poo hanging in the hedges or laying on the side is also offensive to the rest of us so once again I am pleading with those people – you know who you are - who just refuse to bag it up and bin it, please, just join the rest of us and

start cleaning up after your dogs.



Oakley Pre-school Queen's Platinum Jubilee



Almond Garage Doors Ltd



- Servicing Bedford & Milton Keynes
- Spare Parts (including obsolete makes)
- Existing Doors Automated
- EMERGENCY Call Out Service
- New Sales & Installations (Free Quotations)



01234 828953

info@almondgd.co.uk

Fax: 01234 826024

College Farm, Oakley, Beds, MK43 7RX

www.almondgaragedoors.co.uk

Oakley Pre-school News



The children have been loving preparing for the Queen's Platinum Jubilee. We have designed and written a card for Her Majesty and posted it to Buckingham Palace. We also constructed a 'cake' out of cardboard boxes that the children painted in the garden with large paintbrushes and rollers. Two members of The Queen's Guard were also created to guard the cake! Red, white and blue bunting was decorated, using string painting and lots of glitter and was hung around the pre-school to celebrate.

We held a garden party with afternoon tea for all current children and their parents and carers in the pre-school garden at the end of May. We wore red, white and blue to celebrate and the children baked their own cakes for the tea!

Our new pre-school building, although having been delivered, is still not quite ready to be used. We welcomed the Mayor of Bedford and Councillor Jon Abbott to site in April so that they could see how works were progressing. Groundworks have been delayed, but we should see some improvements to the outside of the building by the end of May.

Once we are ready, Ofsted will be coming out to register the new setting. Going forward, the pre-school will be known as Oakley Kindergarten, to reflect the younger ages of children that we will be

accepting and our ethos of 'learning through play'.

We are pleased that we have been granted planning permission to look after children from 8am to 6pm and will be providing breakfast, lunch and supper on site, as well as our healthy mid-morning and mid-afternoon snacks.

Our **Name a Brick Appeal** is ongoing and you can continue to order a brick, where you can record your involvement with pre-school by purchasing a brick that will be permanently displayed on the interior wall of the new entrance hall.

Please see the **Oakley Pre-school Name a Brick Appeal** on the 'New Build' page of our website for an order form. <https://www.oakleypreschool.com/new-build> Alternatively you can give us a call at pre-school to discuss your order.

Admissions

If you would like to register your child for a place at pre-school, please contact us on 01234 826452 or by email:

info@oakleypreschool.com

Our website is:

www.oakleypreschool.com

Follow us on Facebook to keep up with our latest news and events.

For information on funding you can see details on our website with a link to Childcare choices or alternatively you can contact the Family Information Service 0800 023 2057

Sally Martiello

AMIGO

I am very pleased to mention that Pat Olney has kindly agreed to host a garden party at her house at 33 Station Road, Oakley on Tuesday 28th June from 6.30 p.m. Light refreshments and drinks will be available. Please let John Dixon know by the 21st June if you wish to come. John's telephone number is 01234 824959 and his e-mail address is jwdixon30@gmail.com

An enjoyable and informative evening was spent on the 24th May at Oakley Methodist Church when David Fowler gave an illustrated talk on Bedford's Hidden History I am sure that the audience learned a great deal about the history of Bedford.

I will now be consulting with others what might be done about activities beginning in September

John Dixon



David Russell Bespoke Builders Ltd are an expert team of building contractors who faithfully serve Bedfordshire and surrounding area.

When you need professional and dependable building services in the Bedfordshire area, call David Russell Bespoke Builders.

We serve domestic and commercial clients and are dedicated to excellence, completing all of our projects to the highest possible standard.

TRUST DAVID RUSSELL BESPOKE BUILDERS

WITH YOUR DREAM PROJECT

WITH YEARS OF EXPERIENCE IN ALL AREAS OF TRADE, YOUR CONSTRUCTION PROJECT COULDN'T BE IN BETTER HANDS

Contact us on :

Email : info@davidrussellbuilders.co.uk

Telephone : 07982663383

Follow us on instagram @davidrussellbespokebuildersltd and on facebook @David Russell Bespoke Builders



NFB
National Federation of Builders



buywithconfidence.gov.uk

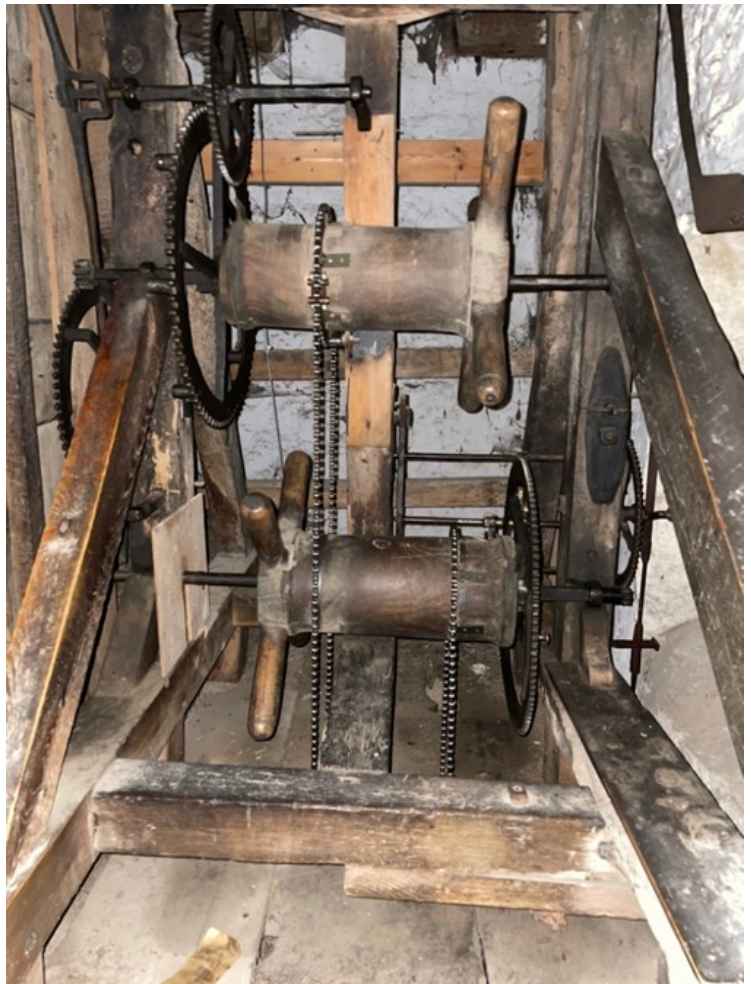
St Mary's Church Tower Clock

As many people in the village know the clock which was installed in 1620 has not been working for the past 3 years. A project to get it restored to working order has been ongoing now for over 18 months. The clock is a listed item with the Antiquarian Horological Society and is numbered as the 67th most important one on their listings.

Needless to say you cannot just get it repaired. It requires expert analysis and special permission from the Church of England to undertake the work. After having four Tower Clock specialists visit the church a contractor was selected and the finance arranged via various donations and appeals.

Finally in early May work has commenced and the entire mechanism, along with its wooden support frame, has been removed and taken back to a workshop for the vital restoration. Currently the expectation is for the entire clock to be reassembled and working by late July. The picture beside this article is of the clock mechanism.

Graham Palmer Church Warden



Steve's Snippet No.57 – Update on Snippet No. 56

The last issue included our version of Wordle, specially for March.

Unfortunately, a major clue to the solution was missing from the version published.

Included after the grid should have been:- "The solution will be revealed at the beginning of next month" (April the 1st).

The letters O and S had been revealed as being correct but in the wrong positions - eventually you might arrive at the solution, FOOLS.

I am sorry if you had sleepless nights because of this...

Steve's Snippet No.58

Some numbers are difficult for us to comprehend.

Did you know?

A million seconds is 12 days. A billion seconds is 31 years. A trillion seconds is 31,688 years.

We may never be able to leave the confines of our Solar System. Current technology might enable us to travel 1 lightyear in just under 40,000 years and (by some estimates) we would still not have left the Solar System.

We really should learn to value what we have!

Steve Nicholas

WHITE'S Lawnmowers & Garden Machinery

Sales ~ Service ~ Parts ~ Hire
Briggs & Stratton Service Centre

STIHL **TIGA** **ALKO**



LAWNFLITE **MTD** **Indespension**
For A Growing World... & many more

LARGE SELECTION FOR ALL YOUR GARDENING NEEDS

01234 826066
info@whites-online.co.uk

www.whites-online.co.uk
College Farm, Oakley, Bedford, Bedfordshire, MK43 7RX



1st Oakley Brownies Activities



Girlguiding in Oakley



Oakley has two guiding units – Rainbows for girls aged 5 -7, and Brownies for girls aged 7-10.

If you would like to enroll your daughter in either of these units or any other units locally, please register your daughter at <https://www.girlguiding.org.uk/information-for-parents/register-your-daughter/>

If you would like more information about the individual units before you register your daughter, you can use the contact details below.



1st Oakley Rainbows (Wednesdays)

If you have other enquiries, you can email me at oakleyclaphamrainbows@outlook.com but if you simply wish to register, please do this through the website.

Unit contact: Amanda Keen (Assistant Leader) oakleyclaphamrainbows@outlook.com



1st Oakley Brownies (Fridays)

It's over to the Brownies for their highlights of the term so far.....

"What I enjoyed at Brownies was when we made paper rockets and launched them with an air pressure tank. I added a character to my rocket and mine went really high!" Eilyn

"we made paper rockets and we taped them together and we used a pump" Saraya

"I loved the rocket launching" Maisie

"I love Brownies because we made cookies and had a picnic for the Queen's Platinum Jubilee and also did cheerleading." Megan

"We made cookies and that's fun. Also when I say fun I mean fun" Abigail

"At Brownies I got to have a picnic" Eleanor

"I liked it when we decorated face masks and made stress balls" Vera and Sophie

"I liked it when we made fruit sculptures and stress balls" Lucy

"We looked at architecture of towers and built them out of fruit and cocktail sticks" Maybelle

"I liked it when we drew inventions. I invented a writing machine" Katie

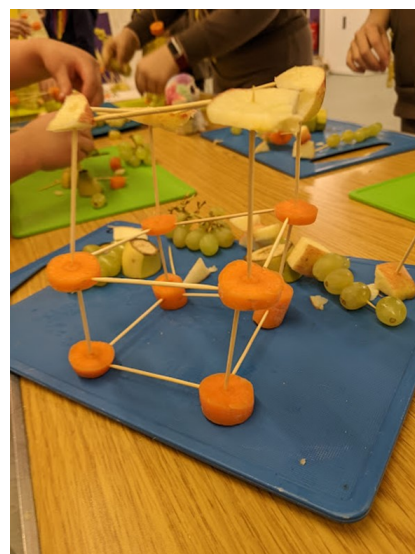
I had lots of fun getting out the parachute and playing fun games on it" Maya

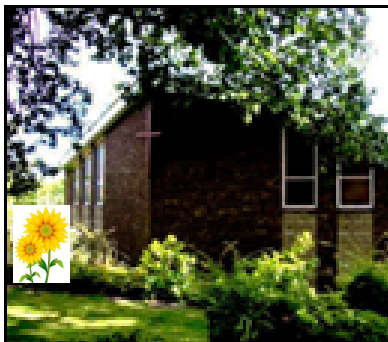
"The most important thing is having fun with my friends" Olivia

"We have had lots of fun at Brownies from the cheerleading at the beginning to the cookie decorating at the end. If you enjoy fun activities come and sign up for Brownies." Skye

You can register your daughter for Brownies at the same website as for Rainbows (see above) and for queries please email

oakleybrownies452@gmail.com. Unit contact: Lindsay Saunders





DATES FOR YOUR DIARY

Messy Church For All

Tues 21st June & 19th July 3.30pm-
Oakley Methodist Church (OMC)

Harvest

Sun 25th Sept 10.30am Harvest Festival
St Mary's (tbc)

Sat 1st Oct 6.30pm Joint Harvest
Supper- OMC

Sun 2nd Oct 10.30am Harvest Festival-
OMC

For details about regular services please
see our websites or social media detailed
below.

ST MARY'S CLOCK RENOVATIONS

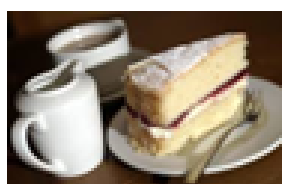
After generous donations from the
community, repairs to the historic clock
in St Mary's are underway. We hope to
be able to hold an open event around the
end of August to explain the renovations
and launch our new working timepiece-
which is of historical significance. Please
keep an eye on our website and social
media

A WARM WELCOME TO OUR NEW CURATE AT ST MARY'S!

We are delighted to be
welcoming Revd Petra Yates to our team
as part time curate in July. She is looking
forward to joining us and getting to know
our three churches and
villages.

TEAS IN CHURCH

St Mary's popular 'Teas in Church' is
back! Held every Sunday from 3.30pm to
5pm. Why not come along and enjoy
delicious refreshments
in beautiful
surroundings, while
supporting your local
church?



COFFEE MORNINGS AT OAKLEY METHODISTS

Every Thursday morning from 10.30am to
12 noon at Oakley Methodist church. Do
pop along for a drink and a chat!
Funds raised go to the Karibuni Trust

*For more details on all our events and services visit
www.bromhambenefice.org or www.northbedsmethodist.org.uk

Facebook: CofE Benefice for Bromham, Oakley & Stagsden

Instagram: bromhambenefice



CONTACTS

St Mary's: Revd. Catherine Wilson: 01234 825665 vicar@bromhambenefice.org
Church Wardens: Hilarie Worley 262166 & Graham Palmer 07710 462535
Administrator Sarah: 07494 069540 administrator@bromhambenefice.org

Oakley Methodist Church:
Revd Chris Sandy: 01234 860484 christopher.sandy@methodist.org.uk
Church Steward: Jeanette Letch 825204



Oakley Village Hall

Church Lane,
Oakley,
Bedfordshire, MK43 7RJ

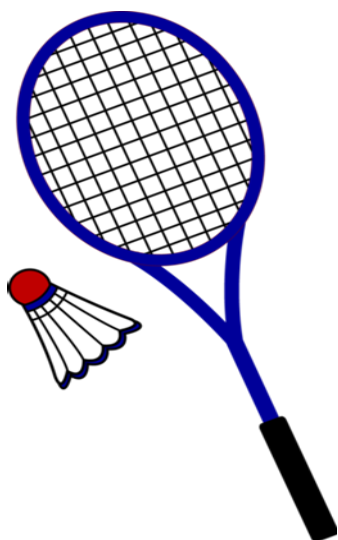
A well-appointed village hall
Main hall with stage and PA system
(Main hall is air conditioned)

Separate meeting room with bar

Well equipped kitchen

For information and bookings
please telephone 07788 796996

OAKLEY BADMINTON CLUB



MEET PEOPLE WITHOUT MASKS

AND GET FIT !

Wednesday 7-8.30pm

Sign up now All ages and abilities welcome.

Tel. 07557 441206



INTERIOR ♦ EXTERIOR ♦ DOMESTIC ♦ COMMERCIAL

Professional & Reliable Local Decorators

SPECIALISTS IN WALLPAPER HANGING

DUSTLESS SANDING

AIRLESS SPRAYING

EXTENSIVE PORTFOLIO

TESTIMONIALS FROM CLIENTS AVAILABLE

TEL: 01234 824173

MOB: 07743 176201

EMAIL: info@oakhamdecorators.co.uk

WEBSITE: www.oakhamdecorators.co.uk

NIGEL L. WILLE

PLUMBING & HEATING ENGINEER

GAS SAFE REGISTERED

BOILER REPLACEMENTS

FULL CENTRAL HEATING INSTALLATION

BATHROOM SUITES

RADIATOR REPLACEMENTS

TAP REPLACEMENTS

ALL DOMESTIC PLUMBING, HEATING WORK
AND REPAIRS UNDERTAKEN

FOR A FRIENDLY SERVICE
PLEASE CALL NIGEL

Tel: 01234 822962

Mobile: 07778 800595

Email: nigel.wille@sky.com



Oakley Allotments

Another growing season is upon us and this is the twelfth year since we started the allotments – how time flies! There is a lot of planning and planting to do at this time of year and, for Julia and me, there is suddenly an abundance of rapidly growing seedlings needing to be transferred from the propagator or greenhouse to the allotment beds.

This has been a dry spring following a very mild winter. We may well have to endure a battle with overwintering pests and diseases as the season progresses, but now the ground is dry and hard, making all of the planting-out more of a task. If the ground was dug over and prepared during autumn there have been few frosts to help the soil form a finer tilth. Mulching with manure and compost over the winter may have helped.

Now, however, a lot of our allotment is fairly dry and unyielding, so planting is done using a method that does not rely on fine soil: using more of a no-dig approach we plant in individually dug holes, add some compost or well-rotted manure (except for root crops), then water and mulch. We have switched to using bagged, commercially prepared manure. Available from garden centres etc. and often reasonably priced in multi-bag deals, it is easier to handle than a trailer-load of the stuff, more uniform in quality and with fewer surprise weed seeds.

Talking to other allotment tenants, as we tend to do frequently, a common subject is that running an allotment is not the cheapest way to enjoy vegetables and other produce. Of course there are the advantages of air, exercise and interest – very therapeutic advantages. It is also a great way to exchange ideas, as people discover handy tips and techniques to pass on to others.

Some crops, however, when grown on the allotment, can return the grower quite a saving when compared to shop-bought. Asparagus is one of these.

David Skipper is this issue's contributor, and he explains more here..

"The weather has at long last warmed up although we are still troubled by strong north winds, and March, April and early May have been very dry. In spite of these conditions, most of us have managed to get started with planting and the allotments are now coming to life.

Root crops planted from seed, onions and potatoes are putting in an appearance. Yet again I am late with peas and beans but I am confident they will catch up. Sweetcorn and brassicas are growing well under glass and will soon be ready



for planting out.

In the last newsletter Karen commented on the rise of the rhubarb. Mine has certainly arisen from its winter slumbers and has cropped prolifically. So too has the asparagus.

In the past I have shied away from growing asparagus thinking it to be a difficult crop to grow. However I planted my first bed three years ago and have been rewarded this year with a heavy crop. Anticipating some success I planted a second bed last year.

Asparagus can be grown from crowns available from nurseries or seeds raised under glass. Crowns (the more expensive option) will give a useful crop within three seasons but seeds require another year. Asparagus needs well drained soil which on our allotments means raised beds. Also some areas on our allotments become waterlogged and so would need to be avoided.

Otherwise care is fairly straightforward – keep watered in dry weather especially when plants are small, keep weed free (weeds will compete with young plants), cut down when the ferns die off in the Autumn and then cover with manure and compost over winter.

Traditionally cropping was reckoned to be from St George's Day to Midsummer's Day and then the ferns were left to mature to allow the plants to build up ready for the following season.

Good luck – we always need that!"

Thank you David.

Twelve years of wear and tear have taken their toll but we now have new posts installed on the main gate – you no longer need the physique of a weight-lifter to operate the gate.

The waste ground by the community shed at the orchard end has been cleared. We await its finishing so that it can be allocated as further allotments, perhaps also with a few more fruit trees and a grassed area.

Allotments will be available and there is a very short waiting-list.

Finally.. if you walk your dog at the allotments, keep it on a short lead, pick up any of its droppings and take them home or to a proper bin – gardeners' compost bins are not a suitable place to put poo-bags, as some obviously think! We grow food here for goodness sake!

Steve Nicholas

*Bring your
garden
to life!*



OAKLEY
BUILDING & LANDSCAPES



Artificial Grass | Building & Landscaping
Driveways, Paths & Patios
Timber & Composite Decking

📞 01234 915049 ✉ info@oakley-landscapes.co.uk
📱 07803 749340 🌐 www.oakley-landscapes.co.uk

Oakley Toddlers Group



I am sorry to hear that due to Covid the Toddlers Group ceased during lockdown and has yet to reopen.

Anyone interested in reawakening the Group please make contact via the Oakley Toddler Group Facebook page.

Apologies from the Editor for any that made the trek on a Monday to find no-one there.

NAO Cattery



BOOK NOW!

07411 136691

naoservices111@gmail.com

www.naoservices111.weebly.com

Bramble Lodge, 29 Oakley Road, Clapham, Bedford MK41 6AN

Opening Hours: 9.00-11.00 Mon-Sat & 18.00-19.00hrs Mon-Fri
Sunday and Bank Holidays Closed

* Note that all boarding cats must be healthy on arrival and fully inoculated against cat flu and contagious enteritis. Terms and Conditions apply, charge includes insurance and vet on call.

NAO Cleaning

- Regular cleaning (Weekly, Fortnightly, Monthly etc)
- Home Care Cleans
- Spring cleans
- Moving In & out clean
- Builders before and after clean
- Tenancy beginning & end clean

FOR A **FREE** ESTIMATE CALL TODAY ON
07411 136691

Bramble Lodge, 29 Oakley Rd, Clapham, Bedfordshire MK41 6AN

www.naoservices111.weebly.com

naoservices111@gmail.com

We cover all of Bedfordshire

HIRE THE OLD SCHOOL

Lovell Road, MK43 7RX,
Reg. Charity No. 1119074

- *Hall available for regular and one-off bookings at weekends*
- *Meeting Room available for regular and one-off bookings weekdays and weekends*
- *Meeting room now with self-contained facilities*



Please contact :

Bill Sellars 07980 745292

Email: billsellars@theoldschooloakley.org.uk

Web : www.theoldschooloakley.org.uk

RP TESTA

PLUMBING & HEATING SERVICES LIMITED

A professional service with over 25 years experience :

All general plumbing requirements
and full design & installation for:

- ◆ CENTRAL HEATING inc. LPG
- ◆ BATHROOMS inc. tiling etc.
- ◆ UNDERFLOOR HEATING
- ◆ UNVENTED HOT WATER



FOR A LOCAL AND RELIABLE SERVICE CALL

T: 01234 781827

www.testaplumbingandheating.co.uk

R J GASCOYNE

THE PLUMBING, HEATING AND GAS COMPANY

Boiler changes, system upgrades, bathrooms, fault finding, servicing, maintenance, gas safety & landlord certificates, repairs, all heating, plumbing, drainage and gas work undertaken.

All from a friendly, reliable, trustworthy and professional engineer.

Contact Ryan on

TEL: 07980 209587

or EMAIL: ryangascoynephg@gmail.com



Uncomfortable with letting strange people into your home?

We are an **all-female** team of interior painters and decorators, working in the north beds village area. Fully experienced in hanging wallpaper, painting – including paint effects, restoring and repairing surfaces, wallpaper stripping and all general home decorating. We are all individually CRB checked, will provide references and testimonials showing the standard of our workmanship giving you peace of mind. We will come to your home to discuss your exact requirement, offer advice and produce a free written specification and quotation. We will then arrive on time, keeping disturbance to the minimum and deliver a quality job using only top quality materials.



OAKLEY ANGELS
The all-female painting and decorating team

- Trustworthy
- Experienced
- Guaranteed work
- Peace of mind
- High quality work at a reasonable price

Phone: 07989 778345
or: 01234 822499

JUST INLINE JUST INLINE WINDOWS

WINDOWS, DOORS & CONSERVATORIES

EMAIL: info@just-inlinewindows.co.uk

WEB: www.just-inlinewindows.co.uk

TEL: 01234 826740 | 07817 129744



WINDOWS / DOORS / UPVC / ALUMINIUM / BIFOLDS / LANTERNS

Just Inline Windows is a Bedfordshire-based double glazing business specialising in all aspects of glazing installations. We are based in Oakley and cover Bedford, Milton Keynes, Northampton, Luton & surrounding areas. We have a reputation built on high quality services, great value and an exceptional level of customer service and aftercare.



LOTS OF LOCAL RECOMMENDATIONS
CONTACT US FOR MORE INFORMATION

CLASSIC CAR MEET

BEDFORDSHIRE

This year started where these events left off in 2021, with Tuesday evenings averaging around 200 show cars. The only difference being we are trying to have two shows a month on the 2nd and 4th Tuesdays through to the last show of 2022 on the 13th September.

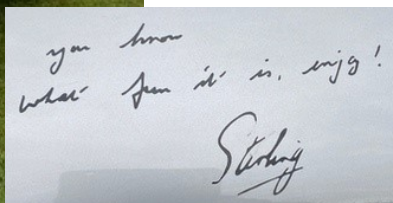
There have been some fantastic cars on show from right through the ages involving classic, vintage, hot rods and some supercars from all

around the world. We even had an E Type Jaguar once raced by Sir Stirling Moss and the roof still bears his writing and signature! Also a wonderful and exceptionally rare 1930's Rolls Royce!

We are pleased to be seeing more and more people from the village coming along and bringing their families to view the cars and stay for a drink and food. Remember there is no entrance fee, just come along and enjoy the evening!



Regards,
Luke and The
Beds Classic Car
Team



From Snacks to Meals!

Cakes to die for
Best coffee in the neighbourhood
Milkshakes, tea, soft drinks
Open SEVEN Days!
Friendly staff, good service



for Coffee

Oakley's Coffee Shop!

Phone 824113- info@o-for-coffee.co.uk
<http://www.o-for-coffee.co.uk>
Oakley Park (Unit 1), Station Road, Oakley!



Tudor Rose Patchwork

Oakley's Sewing and Threadcraft Shop

Phone 824983 - info@tudorrosepatchwork.co.uk
<http://www.tudorrosepatchwork.co.uk>
Oakley Park (Unit 1), Station Road, Oakley!

We're friendly and very helpful!
We run all kinds of workshops and clubs!
We have a great selection of knitting yarns
We have a huge range of cotton fabrics
as well as other types of fabric



Oakley WI suspended at the end of March 2021, after being a presence In the village for 75 years.

If you are interested in restarting the WI or want more information of other WI's locally please contact:-

The Federation Secretary on:-

01234 359538 or bcfwi@btconnect.com



OAKLEY GARDENING CLUB

We are convening a meeting of the club towards the end of January 2022 to decide how we go forward. Please keep an eye on the village notice-boards for further information.

For further information contact Denise Hookham on 01933 312119



For all Pre-School Children
At St Mary's Church Oakley on

Thursdays during School Term 10am to 11.45

Crafts, Painting, Play, Music, Stories and a Healthy Snack plus tea/coffee for the adults

More detail from Dorothy Palmer at
01234 823959



SYDNEY HOWARD LOVELL MEMORIAL ALMHOUSES AT OAKLEY

The Lovell Homes is a small independent living community comprising two bedroomed bungalows and one/two bedroomed flats

Applicants over the age of 60 are invited to apply to go on the register of interest for a property - priority will be given to those with an agricultural or related background.

If you would like to be considered please visit the website www.lovellhomesoakley.co.uk

Or contact the Clerk :

Mandy Newton

On 07736 466965

Registered Charity Number : 200480

oakley *Motorcycle* club

It has been good to see our members venturing back out again now the warmer, lighter nights are upon us. We peaked at over 300 bikes in attendance on 19th May. When we hosted one of our sponsors, St Neots Motorcycles, they brought along some of the latest two wheel offerings from Suzuki.



Although we still have a long way to go to reach the pre-pandemic membership numbers of 543 back in 2019, we are slowly getting there. It was good to see some Police and Fire motorbikes at OSSC on the evening of 14th April in their "Bike Safe" promotion. Hopefully they will be back later this summer. We also had a visit, on 5th May, by the Beds & Herts SERV Blood Runners who do a sterling volunteer job of transporting blood and organs around the region.

On Easter Sunday we had 45 bikes visiting five locations delivering Easter eggs to either elderly



or vulnerable adults. We went to Lovell Homes, Oakley, Milton Ernest Hall, Lomack House, Kempston, Cheshire Homes, Ampthill and Sue Ryder at Stagenhoe followed by a buffet at Oakley Club.

On 21st April we held a bike jumble sale raising nearly £700 from donated items meaning that we have over another £1700 to present to our chosen charity, the East Anglian Air Ambulance. Our current total raised since we began supporting them several years ago is £38,615 and when we have the presentation in July we will have raised over £40,000.



On 28th April OMC committee members John and Jemma Hannaford brought along their race bikes to Oakley Club. John races a 1984 Yamaha TZ250L in the GP Originals and Jemma races a Kawasaki Ninja 300 and a Honda CBR125R as part of Team SkidMarx in the Freetech Endurance series. They will have 20 race weekends this year. Jemma works for a Trust that is involved with Lincroft Academy.



We are planning to hold our hugely popular American theme night on Thursday 7th July with a combination of motorbikes and hot rods complemented by music provided by one of Bedford's best loved tribute acts "The Blues Brothers". One to put that in your diary.



Remember all villagers are more than welcome to bring the family along any Thursday evening to see the bikes and have a drink and bite to eat!

Roger "Baysie" Bays Chair - OMC



Oakley Sports & Social Club

Family & Sports Bar

MENU

KITCHEN OPENING TIMES

THURSDAY (SEE THURS MENU) FRIDAY: 5PM - 9PM SATURDAY: 12PM - 9PM

PIZZA

Margherita **£7.95 (V)**
Tomato Sauce, Mozzarella

Pepperoni **£8.95**
Mozzarella, Pepperoni

Spicy Meat Feast **£9.95**
Spicy Nduja, Ham, Pepperoni, Jalapenos

BBQ Chicken **£8.95**
BBQ Chicken, Smoked Bacon, Red Onions

Veggie **£7.95 (V)**
Mixed Peppers, Red Onions, Mushrooms

ON THE SIDE

- Chunky Chips **£2**
- Sweet Potato Fries **£2.50**
- Cheesy Chips **£2.50**
- Onions Rings **£1.50**
- Fiery Chicken Wings with Blue Cheese Dip **£4.50**
- Halloumi Fries & Sweet Chilli Dip **£2.50**

BURGERS

Served in a brioche bun with salad and chunky chips

Beef, Burger Relish **£7.95**

Crispy Chicken, Mayo **£8.95**

Oriental Veggie,
Sriracha Mayo **£7.95**

BEST OF THE REST

BBQ Baby Ribs, Chunky Chips,
Onion Rings **£9.95**

Scampi, Chips, Peas &
Tartare Sauce **£8.95**

Ham Double Egg &
Chips **£8.95**

*Kids
Meal Deal
£3.50
When purchased on
Saturday between
12pm - 2:30pm
under 12's*

KIDS MENU - £4.95

- Chicken Nuggets & Chunky Chips
- Fish Fingers & Chunky Chips
- Sausages & Chunky Chips
- All with peas or baked beans



Oakley Sports & Social Club
Family & Sports Bar