



Oakley Newsletter



Winter 2017

Number 73



Front Cover
Winter Scene
 by Terry Youngman

Did you spot the mouse? 

The Oakley Newsletter

is published quarterly by Oakley Parish Council and delivered by parish councillors free to every house in Oakley – about 1,000 copies.

Opinions and information

in the Newsletter, both text and adverts, may not be endorsed by the Editor or the Parish Council.

Next issue

Final copy date for the Spring issue is 23 February 2018.
 The publishing date is 1st March 2018.

Advertising rates

Colour Advertisements
 Quarter page: £30

Half page: £60

Whole page: £120

Four consecutive quarter page adverts - discount 10%

Black & white advert rates are available upon request.

Loose inserts, any size up to A4: £100
 Invoices will be issued by Ann Paice, with payment to Oakley Parish Council.

Editor


Bill Chalker
 13 Beverly Close
 Oakley
 MK43 7SH
 07789 997733
 bill@chalker.uk.net

Printers

White Hart Press
 58a York Street
 Bedford MK40 3RL



Hello Children

look out for
 12 more 

Parish Council News

Winter 2017

By PAUL PHILLIPS (Chair)

Hello Everyone,

The preparation of my article for the Newsletter signals that winter is approaching. We have had some frosts and the evenings are getting dark earlier and earlier. It does also signal that Christmas is just around the corner and our Christmas light switch on and Carol Service at St Marys Church will have taken place on 2 December, before you receive this newsletter. It is always an evening to look forward to and as usual I hope many residents will turn up to witness the switch on and enjoy the carols and other 'goodies'.

Speed Watch

Our Community Speed Watch went live on our roads on Saturday 14 October from 9.30am to 11.30am and residents may have seen us in action in our high vis jackets. Twelve of us have received training from the Police and small groups will be operating around the village from time to time. Our main aim



is being to educate motorists to comply with our speed limits and not to enforce them. Details of vehicles exceeding 34 mph in a 30-mph limit and 45 in the 40 limit will be reported to the Police, but we hope these will be the exceptions. If you see us around, come and have a chat and see for yourself exactly what we are doing. The equipment does show us that sometimes we think vehicles are travelling much faster than they actually are. We have at least two sessions planned between now and the end of the year at the school run times with more planned for January. We shall be covering Highfield Road, Station Road,

Continued on page 3

OAKLEY PARISH COUNCIL

PARISH CLERK

Ann Paice
 31 Radwell Road
 Milton Ernest
 Bedford, MK44 1SH.
 824852
 parishclerk@oakleyvillage.co.uk

CHAIR

Paul Phillips
 3 Station Road. 824260
 paulphillips65@gmail.com

VICE CHAIR

Jane Walker
 (Parish and Borough councillor)
 11 Dewlands. 824530
 jane@janewalker.co.uk

Pat Olney

(Parish and Borough councillor)
 33 Station Road. 824384
 pat.olney@btopenworld.com

Jonathan Abbott

11 Lincroft 826335
 ma55ey35@gmail.com

Sara Fardon

61 Lincroft. 824516
 sarafardon@yahoo.co.uk

Michael Frampton

The Little House, The Drive
 822181
 michael_frampton@btinternet.com

Phyllis Jones

35 Ruffs Furze 910187
 phylmaj@gmail.com

Stephen Nicholas

44, Grenidge Way 824345
 sbnicholas@aol.com

Gerry Sansom

21 Pavenham Road.
 823295
 gerrysan-
 som@btinternet.com

Robert Saunders

College Farm. 822328
 rjsaunders5591@gmail.com

Paul White

20 Reynes Drive. 825472
 paulwhite20rd@gmail.com



Church Lane, Lovell Road, Reynes Drive, Westfield Road, High Street and Pavenham Road.

Play Equipment

We had hoped that many of our young people could by now have had many hours of fun on the new play equipment on The Green and on The Furlong, because we were led to believe that it would be installed in late August/early September. Sadly, for some reason, the equipment has been delayed on its route from Poland, but provided all goes well between the time of me preparing this item and the time you read your Newsletter the play equipment for The Furlong should have been installed. Unfortunately, the equipment for The Green will not be installed until the beginning of 2018 (we are told).

We do hope that the equipment at The Furlong is well received and that it will provide many hours of pleasure. It is pretty much exactly what was asked for at our various consultations. We will talk further about the equipment on The Green when we know installation is a reality, though I can assure you that it is the same as was suggested.

Irresponsible Parking

Some residents and other road users still seem to think that it is acceptable to leave their vehicles at the most convenient place for themselves, whether it is on the pavement, grass verges, on yellow lines, on zig zags outside our schools, close to junctions and indeed across entrances. I really do appeal to all those who behave irresponsibly not to do so. From a practical point of view leaving a vehicle wholly on the road helps to reduce speeding and makes our roads SAFER.

Bottle Bank

I am very conscious that I do quite a lot of moaning about certain issues, but sometimes I am justified and once again I have to say that a few

people over the weekend of 20 to 22 October did not really do themselves or indeed the rest of us any favours at all. Clearly, they discovered the bottle bank full and just left their bottles surrounding the bottle bank. It was not until Monday 23 October that a member of the Parish Council discovered it full and immediately arranged for it to be emptied. It was emptied later that same day. It is not the responsibility of the emptying Contractor to put the abandoned bottles into the bank, so they remained there until a very kindly resident gave up over half an hour of her time to tidy the place up. Surely the people who just abandoned their bottles could have telephoned Ann our Clerk or indeed any member of the Parish Council.

Please, **if the bottle bank is full do not just leave your bottles**, take them home or to another bottle bank; there are plenty nearby. I honestly fail to understand the mentality of the people who just leave their bottles for others to clear. We do our very best to empty the bottle bank as frequently as possible. We have decided to increase the frequency of collection while accepting that sometimes the bank will not be full. Most of the time we get it right. Sometimes we do get caught out and on those occasions we would be grateful for your help in not making the situation worse. Rant over, but please cooperate .

WHITE'S

Lawnmowers & Garden Machinery

Sales ~ Service ~ Parts ~ Hire

Briggs & Stratton Service Centre

STIHL
TIGA
AL-KO



Mountfield



HAYTER
MAKERS OF THE PURELY BEAUTIFUL



LAWNFLITE



MTD
For All Growing Work



Indespension
...& many more

LARGE SELECTION FOR ALL YOUR GARDENING NEEDS

01234 826066

info@whites-online.co.uk

www.whites-online.co.uk
College Farm, Oakley, Bedford, Bedfordshire, MK43 7RX

The Lincroft Bedfordia Cross Country.

The prestigious Lincroft Bedfordia Cross Country involving numerous other schools will take place in the village on 16 January 2018. Station Road from Reynes Drive to Lovell Road will be closed for the duration of the event to ensure safety. Car parks will be provided for visitors and they will be clearly marked. We hope that visiting parents will arrive in good time and use the car parks and not inconvenience Oakley residents. Michael Taylor and I will assist with the marshalling and monitor the behaviour of drivers in respect of their parking.

World War 1 Beacon Lighting Ceremony 11 November 2018

In commemoration and remembrance of the end of the First World War and the many who were killed or came home dreadfully wounded, 1000 or more Beacons of Light will be lit at 7pm on 11 November 2018 and the Parish Council has decided to take part in the field adjacent to Browns Wood.

Our intention is to speak with surrounding Parish Councils to see if they might like to join us. I know evenings at this time of year can be cold and possibly wet. However, it will be appropriate to commemorate the date so please note it in your diary and we hope to see you there.



Remembrance Sunday 12 November 2017

The Remembrance Service at Lincroft School on Sunday 12 November went very well, and it was lovely to see a number of Oakley residents including many young people in attendance. Thanks must go to those who organised the service and to those involved in the procession from Lincroft School to the wreath laying at the War Memorial at the crossroads. These included the 2462 (Oakley) Squadron of the Air Training Corps and Beaver Scouts, Cub Scouts and Scouts of the Oakley Scout Group. The Union Flag Colour Party was made up of three members of Dragons Explorer Scout Unit.

Long may this Remembrance Service continue enabling us all to remember those many Oakley residents who lost their lives all those years ago to provide us with the freedom that we all value today. Our young people marching looked very smart in their uniforms and their conduct throughout was impeccable, although they must have been perished. I hope they had plenty of layers underneath their uniforms.

Thank you to everyone who contributed to Remembrance Sunday. What you did was very much appreciated by many of us.

Well, I think that exhausts all I want to write about for this edition. As usual I would like to thank you for reading the Newsletter and thank Bill Chalker for continuing to produce such a good publication.



I wish everyone a lovely Christmas and a Very Happy New Year.

Paul Phillips. Chair

Oakley Grown Merri Christmas Trees

Free
Delivery
within
8 miles
of Oakley



**VISIT ME
TAG A TREE**
(By Appointment Only)

**5ft Nordman Fir
£30**

**4ft Nordman Fir
£25**

CONTACT ME
merrichristmastrees@yahoo.com

Julian Merrill
07946 519737

Borough Council News

by Cllr Pat Olney

Bedfordshire, Luton and Milton Keynes Sustainable and Transformation Partnership

The title is very wordy but this is the organisation that is looking at the health needs of the whole area including Bedford Borough.

Merger of the Luton and Dunstable Hospital and Bedford Hospital. A full business case is being developed. Price Waterhouse Cooper is managing the process with a senior manager from each hospital. It is important that independent and specialist skills are brought in as a merger of trusts is rare event.

Stakeholders, staff and patients will play a key part in developing and shaping the business case. Both Councils have been assured that A&E, maternity and paediatrics will remain at both hospitals. We should know the outcome in December.

Out of Hospitals Estate – the aim is to create **Primary Care hubs** close to our populations' homes that are equipped with the appropriate facilities for services in the 21st century. It will also enable the disposal of buildings that are currently underused and costly to maintain.

Primary Care Homes – will network GP practices, including the sharing of workforce and infrastructure. It will support them with wider multidisciplinary team to look after populations of approximately 30-50k.

There is much more information which will be in future newsletters. To sign up for the newsletters access the website at the top of the page.

Pavenham Causeway work is now complete much to Stevington and Radwell's relief. It certainly cut the traffic in Pavenham and Oakley.

I have reported to the highways department the deterioration in the road from Carlton Turn to and through Stevington. The edge of the road has fallen away because cars, vans and buses have had to go on the verge to be able to pass on the narrow country road. Potholes have increased dramatically showing how substandard the road is. Which leads me on to :-

Parish Council's meeting with the Mayor about the three large settlements north along the A6.

There were three presentations: CPRE discussed whether the number of dwellings put forward in the Borough Local Plan 2035 reflected the future housing need of Bedford Borough. Derek Bliss analysed the traffic figures presented by each settlement on the A6 and the Sainsbury's roundabout. He also analysed the traffic movement figures from the two recent consultants reports engaged

by the Borough. Pat Olney talked about the impact of the traffic on our narrow substandard rural roads at present and the impact of the increased traffic from the current proposed village developments in the plan to 2035. The traffic from any of the settlements that are proposed along the A6 (which is already congested) would increase the rat running through the villages. This would not only increase journey times. The impact would be severely detrimental to the village communities, residents' wellbeing and the rural landscape. The Mayor and the Officers then answered questions from the floor.

The meeting was very informative. A newsletter summing up the main points will be sent to each Parish.

Thank you to the organisers, to the Parish Councils and particularly to Oakley, Pavenham and Stevington Parish Councillors who attended.

The Government's White Paper on Housing Need – this document is a consultation document setting out a proposed formula to assess housing need not only for the borough overall but for each parish. It is based purely on population and does not consider the constraints that the borough and each parish might have. It does not consider the adequacy of the existing infrastructure including roads, schools, health needs and the impact of considerable increased house building over and above what is already in the emerging Local Plan to 2035. The Bedford Borough Council and some Parish Councils, including Oakley, have objected to this simplistic formula.

On a happier note, I attended a speed dating of voluntary organisations in the borough. It was heartening and so impressive to see how many people in the borough volunteered to help people who are in need, some medically and some through poverty. They are too many to include here. A big thank you to everyone who give of their time and care. Our villages and communities would be much poorer places without the commitment of these volunteers.



I wish you a good and Merry Christmas and a Happy New Year.

Pat Olney Tel. 01234 824384
email pat.olney@btopenworld.com

Oakley Pre-school News



Oakley has been lucky enough to have a pre-school in the village since the late 1960's. Next year will be Oakley Pre-school's 50th Birthday! We have seen many changes over the years, both to the Early Years Education System, to the Welfare State and how childcare is funded in our country. The pre-school has consistently delivered a high standard of care and education and we are very proud of the outstanding provision that our setting provides today. Our management committee and staff are busy preparing a celebration for May 19th 2018 and we do hope as many pre-schoolers as possible, both past and present, will be able to join us for this momentous occasion. Look out for posters and flyers nearer the time.

We are pleased to welcome back Mrs Dianne Todd to pre-school. Dianne left pre-school in 2008 to broaden her experience of Early Years settings and to manage a Day Nursery. She is returning to us with a vast knowledge and we look forward to working with her again.

As part of our fundraising this term we held a Halloween trail around the village, which finished at O for Coffee. This was very successful and it was great to work with a local business. We raised £172.50 so thank you very much to all who took part. The children have also designed their own Christmas cards which were printed and ordered by parents and carers. Christmas is fast approaching and the children are looking forward to an end of term Christmas party and celebration concert for the older ones. We have also hosted a Crafty Christmas fundraising event.

Admissions

If you would like to register your child for a place at pre-school, please contact us on 01234 826452 or by email: info@oakleypreschool.com

Our website is updated regularly; please do visit it for an insight into Oakley Pre-school.

www.oakleypreschool.com

Follow us on Facebook to keep up with our latest news and events.

For information on funding you can contact the Family Information Service 0800 023 2057

Sally Martiello





New Brownie Leaders Needed



The Oakley Brownie Leaders have a combined service of 55 years running Oakley Brownies and all feel the time has come to retire gracefully. Brownies have fun, build confidence and friendships whilst gaining valuable life skills. The girls are desperate to keep Brownies going so we are **looking for a new Brown Owl and her helpers.**

The current leaders will be staying on until July 2018 and will be happy to show everyone the ropes before they go. Being a volunteer is very worthwhile not only for the girls but for yourself as you learn new skills and make new friends in the Guiding world. Training as new Leaders, you will be supported by an experienced Division Commissioner and a team of Guiders with your own mentor. Interested in finding out more please contact Brenda Barnes on 07580 642764 .

The contribution of local Girlguiding Leaders was acknowledged at a **recent Awards ceremony** at Sharnbrook Hotel. **Helen Barnes** received her five year service badge, **Brenda Barnes** received her thirty year service badge, **Joyce Scott**, **Brenda Barnes** and **Lindy Chalker** also received the Bedfordshire Brooch - awarded as a special Thank You for all the hard work, patience and dedication that leaders have given over the years to their units and Girlguiding in Bedfordshire.

Joyce Scott has an amazing background in Girlguiding. Joyce was a Brownie, Guide and a Sea Ranger in Weston-Super-Mare during her youth. Then moving to South Wales Joyce was a Ranger and young leader at Guides. Work took Joyce to Kegworth in Leicestershire where she became a Brownie Leader (Snowy Owl) and gained her pack holiday licence.

When she moved locally to Meppershall Joyce helped at Rainbows & Brownies. When she came to live in Oakley Joyce became a Guide Guider and gained her Campers licence and her Catering licence.

In 2014 Joyce opened up a new Rainbow unit in Sharnbrook to enable her granddaughter to enter into guiding and where she is still a Guider. Joyce also helped to set up North Beds Trefoil Guild in 2012 and took on the role as secretary for 5 years. Joyce received her 20 year service award in 2008 .



Guiding in North Beds

The last few months have been very busy for members of Girlguiding in North Beds. The Guides attended the Bedfordshire County Camp at Molivers in Bromham. A variety of activities were on offer including climbing, caving, archery and shooting, trips to local attractions and lots of outdoor fun.

The Rainbows have been celebrating 30 years since Rainbows began nationally. Fifty Rainbows and their leaders from Oakley, Wymington, Sharnbrook and Wilden met for an under the sea themed birthday party. The girls decorated biscuits to look like oysters with pearls inside them, they made Rainbow jellyfish and had flap the fish races. They sang happy birthday and enjoyed cake and squash.

Over 70 Brownies and Guides got together at Molivers for a day camp on a very mild day in October. They had a go at erecting tents, building and lighting fires and cooking their own lunch. They also decorated plate bags and made clay "green men". Everyone enjoyed making "s'mores" from chocolate biscuits and hot marshmallows and finished with campfire singing.

North Beds Trefoil Guild (Guiding for adults) went to see The Phantom of the Opera at Sharnbrook Mill theatre and are looking forward to a visit from an Antarctic marine biologist to hear about her life and career.

All these activities were made possible by the enthusiasm and dedication of all our leaders and helpers. This past year we have been very pleased to welcome several new volunteers into a variety of roles, but we are always keen to welcome more. Guiding can be very flexible these days and we are particularly looking for adults, 18+ to work with Rainbows and Brownies in Oakley and Clapham whether on a regular or occasional basis. Please do e-mail Jane at div.nbeds@bedsguiding.org.uk if you might be interested in finding out more. So many people have happy memories of their own time in Guiding and to be able to give something back is very rewarding, as well as being great fun.

To register your daughter for Rainbows (5-7 years), Brownies (7-11 years) or Guides (10 -14 years) please visit www.girlguiding.org.uk/information-for-parents/register-your-daughter

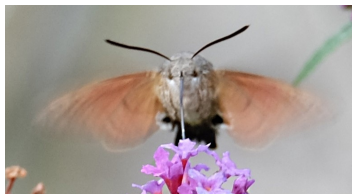
We are always keen to welcome new members to join in the fun so please do get in touch to find out about your local groups.

Jane Thompson, District Commissioner

Steve's Snippet No.30

I cannot recall any year when I have seen so many butterflies and so many different species. I am learning to identify more species so have probably seen more than I can confirm. Some are just smallish, bluish, or medium, brownish - none seem willing to pose for long to assist with their identification.

This summer red admirals have visited our buddleia regularly, as have commas, small tortoiseshells, painted ladies, large whites, small whites, green-veined whites and (unidentified) skippers. Elsewhere we have seen meadow brown, speckled wood, orange tip and gatekeeper, amongst those that can be identified.

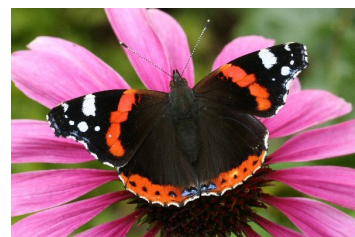
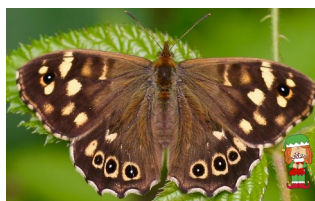


The high point has been seeing a moth rather than a butterfly - a hummingbird hawk moth has visited my allotment and one (whether one individual or several is impossible to say) has visited our buddleia on at least four separate occasions

over several days. The garden visitor, having had its fill of nectar, then landed to rest one morning, allowing me to photograph it.

High point of the year so far has been seeing at least a dozen red admirals at one time feeding on burdock flowers near Pinchmill Islands, Sharnbrook.

Yes, a butterfly year. I hope they are rising from their recent decline.



From Snacks to Meals!

Cakes to die for
Best coffee in the neighbourhood
Milkshakes, tea, soft drinks
Open SEVEN Days!
Friendly staff, good service



for Coffee

**Oakley's
Coffee Shop!**

Phone 824113- info@o-for-coffee.co.uk
<http://www.o-for-coffee.co.uk>
Oakley Park (Unit 1), Station Road, Oakley!



Tudor Rose Patchwork

**Oakley's Sewing and
Threadcraft Shop**

Phone 824983 - info@tudorrosepatchwork.co.uk
<http://www.tudorrosepatchwork.co.uk>
Oakley Park (Unit 1), Station Road, Oakley!

We're friendly and very helpful!
We run all kinds of workshops and clubs!
We have a great selection of knitting yarns
We have a huge range of cotton fabrics
as well as other types of fabric

AMIGO

A welcome return was made to the Bedford Arms at Souldrop in September for a skittles match. After a closely fought contest the match was won by Tony Ball. Congratulations to Tony. A buffet was enjoyed at the cost of £6.00 a head.

A very good evening was spent at Oakley Methodist Church on Tuesday 24th October when Paul Sutherland spoke on behalf of the charity, Bedfordshire Opportunities for Learning Disabilities Appeal. It is a very worthy cause supporting people with a learning disability, autism and challenging behaviour. It provides life and work experiences and helps people learn, grow and develop. I am pleased to report that a total of £95.00 was given by way of donations that evening.

A presentation of "Medical Detection Dogs" was given at Oakley Methodist Church. These dogs are trained to detect the odour of human disease. It is at the forefront of the research into the fight against cancer and helping people with life threatening diseases.

FUTURE EVENTS

Tuesday 19th December 2017 A traditional evening of carol singing will be taking place at The Bedford Arms, Oakley beginning at 8.00 p.m.

Tuesday 23rd January 2018 A film show at Oakley Methodist Church beginning at 8.00 p.m. Details to appear in the Churches Newsletter.

Tuesday 27th February 2018 A talk on the history of Oakley to be given by Pat Olney at Oakley Methodist Church beginning at 8.00 p.m..

Tuesday 27th March 2018. A light hearted musical quiz presented by Sue Brecknock at Oakley Methodist Church beginning at 8.00 p.m.



Thursday 26th April 2018 A daytime visit to the Military Intelligence Museum at Chicksands. Please note that this event will take place on a Thursday. Please let John Dixon know if you wish to come as he is required to give the names of those people attending in advance. In due course John will need to know the make, colour and registration number of all cars being driven to Chicksands as well as the name of the driver and the names of the passengers. There is a maximum of ten cars. Also each person coming will need to bring evidence of identity meaning a passport or driving licence (with photograph). John is proposing to begin the tour at 11.00 a.m. and confirmation from the Museum is awaited.

Tuesday 22nd May.2018 You are welcome to a garden party by the kind invitation of Pat Olney at

33 Station Road, Oakley of from 6.30 p.m. Drinks and light refreshments will be available

Tuesday 26th June 2018 an evening ramble to be led by John Dixon. Details to follow.



Thursday 26th July 2018 A coach outing to London. Charlie de Wet will be our guide and will be taking us on a stroll along the Thames Embankment visiting many places of interest and finishing at Tower Bridge. Further details to follow. Please note that this event will be held on a Thursday.

Please contact John Dixon for any further information. Tel. No. 01234 824959. E-mail jwdixon30@gmail.com

John Dixon

FIT for LIFE PILATES

Beginners/Improvers

Oakley Village Hall

Mondays 11.30 – 12.30

With Nola

**Certified Stott Pilates Instructor,
P.E.A., R.S.A.**

£4.00 per class

**For more information on
Classes / Private Tuition**

call Nola on 07793 056122

FIRST CLASS FREE!

Winter at College Farm

Well another year has flown by, the crops have finally all been harvested, the fields cultivated and drilled with oilseed rape, wheat and barley for next year's harvest.

This past year has seen a lot of firsts for me. I had my earliest ever start and latest ever finish to the silage harvest. Crops were mown from 21st April and baled just a few days later, with the last bale made on 17th October.

The cereal harvest also followed a similar trend, starting on 4th July and finally finishing on 16th October. This partly was due to the crops which we chose to grow and the weather.

Different crops come to harvest at different times in the summer which allows us to spread our combining workload. Late spring and early summer were warm and dry which meant crops were racing towards harvest, even I was beginning to plan a holiday in August! All we had to do to make it rain was get the combine out. The combine needs nice long dry days to work and throughout the second half of July, August and early September I don't think we managed more than two consecutive dry days. This meant harvest was a stop/start affair taking a very long time with the later crops not maturing very fast.

All the rain, followed by a warm October meant grass growth was phenomenal. Many livestock farmers wanted to bulk up the silage stocks after poorer crops earlier in the season when it was dry. This meant a very busy month for us as we were trying to do all September's work in October!

I am lucky that my job allows me to watch the seasons change. I would not like to say what causes the weather but it does seem to be changing. We get long spells of either wet, hot, dry or cold weather, sometimes out of season and also a lot of extremes, such as wind and rain.

A cold winter is apparently on the horizon. I hope this is the case as I like the seasons to have seasonal weather. If it does snow we run two snow ploughs and are contracted to keep certain supermarket car parks, such as Sainsburys, and roads clear.

Over the winter months it is only really the hedge cutter which is out most days. The other jobs consist of servicing the equipment ready for next season, tending to the cattle and everyone having a holiday.

A lot of people have asked me about the big stacks of straw we have and what it is used for. It was all baled in the summer and is surplus to requirements in this area. However, straw is a lot

rarer in other areas of the UK so about one lorry load (25 tonnes) a week leaves the farm to go to a grateful farmer in Wales or up North. The weathered bales at the top of the stack are sold to straw fired power stations which burn them to make electricity. This is known as renewable energy.



Over the last few months a couple of our cows have decided that life is better in the village! I firstly would like to thank the lady who knocked on our door at 6am one morning to let us know and also apologise that when I drew back the curtains I didn't have a lot on! Thank you also to Phil Evans who manage to capture a young heifer in his garden, I hope it didn't do too much damage. Thank you to all those who helped Laura and I get the heifer back into the farmyard. We are extremely grateful.

Lastly, I would just like to say a big thankyou to all those that work for us and have helped us out throughout the year. It is not the easiest or cleanest of jobs and involves long hours but we all seem to enjoy it and when it does all go well it gives an enormous feeling of satisfaction.

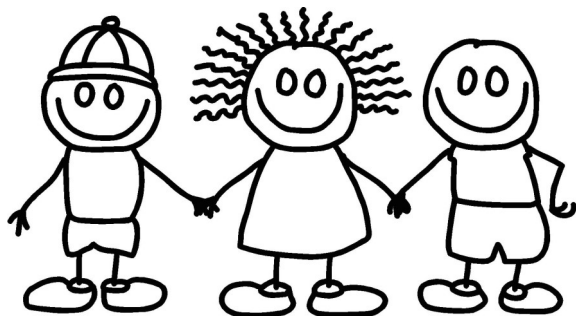
Farmer's wife duties

Winter for a farmer's wife means that you get to see your husband a lot more as it is probably one of the quietest seasons for farming. It is also one of the most sociable and there are many award parties, harvest supers, Fatstock dinners and Christmas balls to attend.

As my farming duties almost come to a standstill over the winter months, although you never know what you might get asked to do next, I decided to breed from our working cocker spaniel. We kept one of her puppies who is now 11 weeks old and is very much a handful. It makes cows and calves look very easy, you wouldn't believe how much mess puppies can make.

In addition to this I am continuing with my art and photography and adding to my portfolio of paintings – you can view my work at ljcreativestudios.com

Merry Christmas from all at College Farm.
Henry and Laura Saunders



Oakley Toddlers

Monday 9.30-11.00am
term time only in the Village Hall

£1.50 crafts/toys/singing/drinks & snacks

Oakley Toddlers has been running successfully over the last two decades, providing a warm friendly place for mums, dads, grandparents and carers to meet and play with their children.

Anyone interested in volunteering to help run the group please drop in to meet us and see what is involved!

Contact Sue Carey 07971 202405

NAO Cattery

BOOK NOW!



07411 136691

naoservices111@gmail.com

www.naoservices111.weebly.com

Bramble Lodge, 29 Oakley Road, Clapham, Bedford MK41 6AN

Opening Hours: 9.00-11.00 Mon-Sat & 18.00-19.00hrs Mon-Fri
Sunday and Bank Holidays Closed

* Note that all boarding cats must be healthy on arrival and fully inoculated against cat flu and contagious enteritis. Terms and Conditions apply, charge includes insurance and vet on call.

NAO Cleaning

- Regular cleaning (Weekly, Fortnightly, Monthly etc)
- Home Care Cleans
- Spring cleans
- Moving In & out clean
- Builders before and after clean
- Tenancy beginning & end clean

FOR A **FREE** ESTIMATE CALL TODAY ON
07411 136691

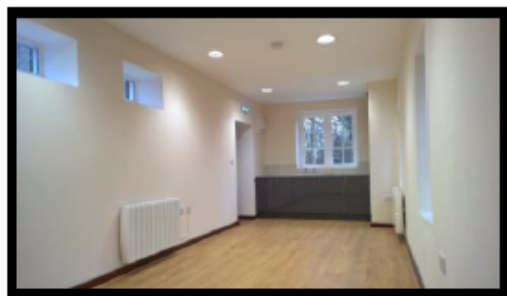
Bramble Lodge, 29 Oakley Rd, Clapham, Bedfordshire MK41 6AN
www.naoservices111.weebly.com
naoservices111@gmail.com

We cover all of Bedfordshire

HIRE THE OLD SCHOOL

Lovell Road, MK43 7RX
Reg. Charity No. 1119074

For your Club, Society, Music Practice, Children's
Party or Meeting
Regular times available for the Meeting Room and
Hall (hireable separately)



NEW MEETING ROOM AVAILABLE

Please contact :

Bill Sellars 07980 745292

Email: billsellars@theoldschooloakley.org.uk

Web : www.theoldschooloakley.org.uk

RP TESTA

PLUMBING & HEATING SERVICES LIMITED

A professional service with over 25 years experience :

All general plumbing requirements
and full design & installation for:

- ◆ CENTRAL HEATING inc. LPG
- ◆ BATHROOMS inc. tiling etc.
- ◆ UNDERFLOOR HEATING
- ◆ UNVENTED HOT WATER



FOR A LOCAL AND RELIABLE SERVICE CALL

T: 01234 781827

www.testaplumbingandheating.co.uk

St Marys church - Proposed refurbishment work to the organ

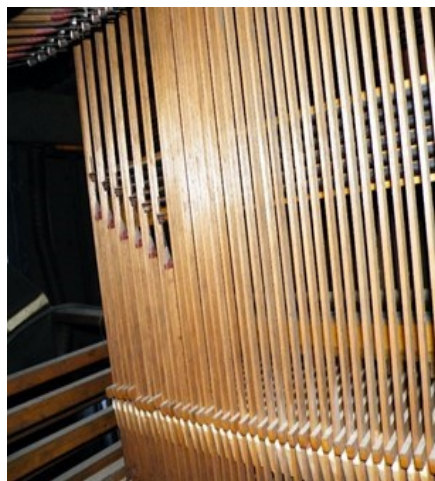
St Marys Church is seeking organ lovers and musicians to join a project group to refurbish the organ.

St Marys PCC is embarking on a project to refurbish the church organ to ensure it can continue to support public worship in this beautiful setting for generations into the future, as well as becoming an attractive resource for musicians locally.

The organ was originally commissioned from a Birmingham firm in the late 19th century by the occupants of Bromham Hall. At that time it was regarded as a status symbol to own an organ to be used for domestic music making, or for use in a private chapel. It was moved to St Marys as part of the extensive reordering of the church during the 1920s. At the same time the special chamber was built as an extension on the north side of the chancel. Much of the pipework from the original instrument survives in good working order today. Some work was done in 1949 and its scope was extended in 1972 to the specification we have today.

The organ has 436 pipes and works mostly on 'mechanical' principles, i.e. the linkage between the keys and the pipes is via wooden rods and wires. This method is tried and tested in organ building history for over five centuries. It is crude but effective with the benefit of ease of maintenance. For the musician there is greater sensitivity as the organist's fingers can perceive and control the point at which the wind is released into the pipes.

The aim is to preserve and enhance the existing historical material respecting its local origin, and retain its fa-



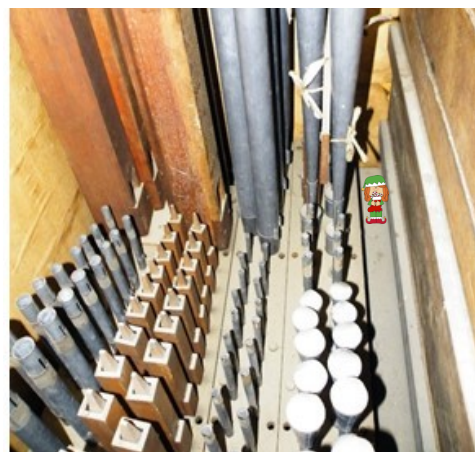
miliar position and appearance. Specifically, work will address three issues.

- 1) Visually, the organ's appearance is very tatty, with the woodwork requiring polishing and the front pipes require repainting.
- 2) Internally, the organ is very dirty, and the mechanical parts and wind system need refurbishing.
- 3) Musically, the organ will benefit greatly from some reordering of the pipes, the addition of another stop and removal of some electrical components which are regarded as at the greatest risk of failure in the future. Without any refurbishment work it is feared that the organ may fall into a spiral of dilapidation therefore increasing maintenance costs in the future.

Quotations are currently being obtained from nationally accredited organ building firms and it is hoped to be able to progress to firming up on contract details in the next few months.

Meanwhile, the PCC is forming a working group to manage the work and invites participation from any villagers keen to contribute to the project

Organ Lovers and Musicians - If after reading the above you would like to **join the project group** please get in touch with me at simon.trott@ntlworld.com.



Simon T. Trott

Organist and Choirmaster at St Mary's Church

Oakley Rural Day Centre

NEWSLETTER November 2017

WELCOME

Welcome to our latest newsletter from our Day Centre. Christmas will be fast upon us and we would like to wish everyone connected with the Day Centre a Merry Christmas and a Happy New Year! Our clients are well underway with Christmas activities and recently started making Christmas Cards, (picture on right). In the run up to the Christmas season our clients will be making Christmas decorations and various items linked to the festive period.



PLACES AVAILABLE

Our Day Centre provides our older people a place where they can make friends in a warm and comfortable atmosphere. A range of activities including crafts, entertainment, quizzes and good old conversation are at the heart of our day. We serve freshly prepared home cooked lunches together with tea, coffee and toast at the start of the day with beverages throughout.

The Centre is open Tuesday, Wednesday and Thursday. For details of costs and advice regarding transport, contact Lynne on **01234 824935** or **07733 227374**

AUTUMN FAIR

The Autumn Fair was held over three days towards the end of October and was a great success. The event raised **£819** towards charity funds. Thanks to all who contributed items and who purchased goods over the three days.

EVENTS

KEMPSTON HAMMER CHOIR visited the centre in October and provided an afternoon of entertainment, singing some wonderful tunes which everyone at the centre thoroughly enjoyed. Thanks to the choir for such wonderful entertainment. They will be returning to entertain us again on Wednesday 29th November.

THANKS

Thanks to all the children and staff at **Oakley Lower School** for donating food parcels at Harvest Festival for our clients. They were thrilled with the gesture. Also many thanks to **Tesco** in Riverfield Drive and Cardington Road, **Sainsbury's** Kempston and **Morrison's** in Bedford for providing vouchers for our Cheese and non Alcoholic Wine Party at the Centre. Our clients had a lovely time trying out all the different cheeses.

I would also like to personally thank our wonderful group of volunteers who give their time to the Charity. As well as time they provide various items to help with craft projects, bake cakes and display items, all for the enjoyment of our clients. With all Charities, volunteers are an integral part of the set up and we really appreciate what they do for us.



David Swallow

Oakley Show September 2017

On Sunday September 17th the second Oakley Show took place . On behalf of the committee I would like to say thank you to all the people that were involved in making it happen. To **Paul White** and Milton Ernest Garden Centre and all the other people who provided trophies and raffle prizes and I must not forget the village hall committee for the delicious cakes they produced for refreshments. Another group of people who need our thanks are the judges who had the onerous task of choosing the winners.



So people CAME and brought their entries, then the judging took place.

Then quite a few villagers came and SAW what was produced, I was expecting small robots but we had almost life-sized models, well done children.

The entrants who CONQUERED were:

Children's baking : **Angelina Wildman**
 Children's robot : **Rainbows A**
 Flowers : **Louise Hamshire**
 Fruit : **Michael Frampton**
 Vegetables : **Ian Percival**
 Photography : **Melanie Halls**
 Craft : **Yvonne Keyte**
 Baking : **Donna Peckham**
 Preserves : **Katt Robinson-Nicholas**
 Painting : **Jenny Sudworth**
 Overall Winner : **Ian Percival**



The number of people who put in one or more entries was almost double that of last year with well over 100 items to be judged. We will be holding another show next year and it would be wonderful if even more villagers entered. There will be a slight alteration to some of the classes and if anyone would like another subject to be included please let me know, my e-mail address is

i.weston370@btinternet.com

The money raised, £512.78, will go towards the upkeep of the village hall. So thank you to all who entered, to those who bought raffle tickets and to the buyers of the goods that were auctioned by **Steve Nicholas**.

Jean Weston





Scotland...again

My account of the Scotland trip of 2016 continues, but slightly out of sequence following recent concerns about the threat of ticks and the Lyme disease they can (but don't always) carry. I will return to the continuing (hopefully the concluding) story of the trip in the next newsletter.

A report of a man contracting Lyme disease from a tick-bite at Harrold Country Park in the early summer has caused understandable concern. For now, I speak as a survivor of such an experience, a tick attack that is, fortunately not Lyme disease.

Dennis had finally reached the approaches to Dunnet Head - the true northernmost point on the mainland and a few miles from John O'Groats. With the advantage of motorised transport, I too approached Dunnet Head, somewhat ahead of the tired long-distance cyclist. However, in the spirit of the venture and because it had had few outings so far this trip, my trusty Brompton was unfolded from the depths of Figgy the Van: I planned to cycle back along the route to meet Dennis and encourage him over the last few miles. I could also make a very broad claim that I had cycled to the northernmost point too. Perhaps poetic justice was to follow...

I parked the van off the road a few miles from Dunnet Head in a quiet, wild area (not too hard to find up there), set the bike up and headed downhill to meet the intrepid fundraiser. A good few miles went before I spotted a tired and slow Dennis coming towards me. I stopped to take photographs of the cotton-grass which had become more of a feature the further northwards I progressed and then accompanied Dennis towards Dunnet Head.



Dennis was very tired as the previous few weeks finally caught up with him and he was very slow on the road now. His bike was laden with all his equipment in panniers and bar-bag (he had always refused to let me transport any of it) and so he was quite happy for me to ride ahead as he contemplated the imminent end of the mission.

Unladen, I was quite a bit faster on the Brompton and so headed up the considerable climb to Dunnet Head to wait for him at the top. I took the opportunity to get some serious exercise and it was exhilarating in the breezy, sunny conditions and I was wearing shorts for the occasion.

Dennis finally arrived at the carpark by the Dunnet lighthouse and his energy returned with the elation of having completed such a challenging expedition. After much posing and camera-work, plus the adulation of the other visitors to the Head, some even making donations on the spot, we returned on the easy downhill run to Figgy. There was only one thing left to be done - a visit to a local hostelry for a much-needed beer and some food. I folded and installed the Brompton, loaded Dennis's bike (called, Dorothy, as it happens and not due to any contagion from me), wandered off for a short comfort break and headed off to the hotel we knew.

We entered the hotel, ordered much beer and food and headed for a vacant table. It was a time to catch up with texts etc. and there was a bit of a signal. With one leg resting over the other I sat looking at my phone. It was then that, glancing past my phone, I saw it - a tick, about the size of a matchhead was partly embedded mid-calf in my left leg. I knew immediately what it was and, unused to such an experience, I reacted almost as if I was facing some vicious wild animal, intent on doing me harm. I was probably going to breath my last very soon.



My immediate reaction was to pinch off the tick, but they bury their heads quite well and are notoriously hard to remove intact. Dennis went off to ask the hotel staff if anyone had a clue how to remove ticks as we considered it must be a fairly common problem in these wild parts. I had seen tick removers for sale in the village stores in Scourie a few days earlier - the shop was of the rare and remote type that necessarily stocks just about everything available in the known universe. Tick removers were on sale - a snip at £5-95 for a small plastic tweezer - I had passed - right now

Scotland ...again - Continued

I would have bought one for twice that amount, plus a spare just in case.

The consensus was that nobody in the hotel really knew. Advice varied from smother it in vaseline to hold a lighted match near it. I hadn't got a clue at the time, but I now know that neither of these remedies is advisable as they can cause the tick to regurgitate in to your bloodstream, almost guaranteeing that you will become infected with whatever the little blighter is carrying in the way of novel and challenging diseases.

One young lady provided an antiseptic wipe and small circular plaster, with the helpful advice that Lyme disease was not guaranteed, could be detected by being vigilant for the appearance of a classic, tell-tale bulls-eye or rosette-like rash - the rosette can appear anywhere on your person. Her friend had been infected, had had successful antibiotic treatment and was still alive and healthy.

My own efforts removed the offender. I used the wipe and the plaster and felt that I really deserved another beer - driving could wait. Some of the tick remained in my leg and I would have to visit my GP after returning home. I did this later and a nurse removed the remains of its head from my leg - there was not much there but it was great to say farewell, finally.

I was reassured by the nurse that, as I had not had the tick aboard for very long (possibly only an hour or so) the likelihood of infection was slight. Nevertheless, I would have to remain alert for any signs of the onset of Lyme disease, which could manifest as much as 90 days after contact (it can actually be much longer, and the rash only occurs in 50% of cases anyway). Whooppee! I thought.

Ticks are widespread and have been for quite some time. Rising temperatures and milder winters are possibly helping them prosper. They are certainly receiving more publicity as people become more aware of the risks they present. A number of celebrities (recently, Matt Dawson) have also revealed their own struggles with a disease which is not familiar to many medical professionals and can be difficult to diagnose, be misdiagnosed or remain undiagnosed.

There is so much information available online if you need to know more. I will conclude at this point except to say that, unaware of the risk at the time, I wandered around, wearing shorts, in wild undergrowth in an area known for ticks. That is possibly one of the best ways to ensure you have a close encounter of the tick kind.

Steve Nicholas

R J GASCOYNE

THE PLUMBING, HEATING AND GAS COMPANY

Boiler changes, system upgrades, bathrooms, fault finding, servicing, maintenance, gas safety & landlord certificates, repairs, all heating, plumbing, drainage and gas work undertaken.

All from a friendly, reliable, trustworthy and professional engineer.

Contact Ryan on

TEL: 07980 209587

or EMAIL: ryangascoynephg@gmail.com





Oakley Sports & Social Club

Family & Sports Bar

<http://oakleyssc.com>

Oakley Sports & Social Club (OSSC) comes off the back of a busy summer, which saw three successful village fun days and Oakley Carnival, to jump head-first into Autumn and Winter festivities.

OSSC hosted a Fireworks Display on the 4th November, which was the biggest and best one yet. The firework display itself was an upgraded spectacular upon previous years (a video of which can be seen on the club's Facebook page – <https://facebook.com/oakley.ssc>), and also included various extras (a tea-cup ride, trampolines and stalls selling children's merchandise, popcorn and candyfloss). This was in addition to what we already provide via our existing, excellent facilities (children's play area, kitchen serving chips & burgers and refreshments).



The event was very well attended, received fantastic feedback and generally was a great success. However, plans are already afoot on how to improve this event for next year and make it even more successful... In other news, OSSC's brewery has changed, with one notable upshot being that Guinness is back at the club!

Looking ahead, Santa will be visiting the OSSC Grotto on 10th December for OSSC member's children (don't forget to sign your children up at the clubhouse in advance), and the club's Christmas opening hours are as follows:

	Christmas Eve: 12pm – 11pm	New Year's Eve: 12pm – 11pm
22nd Dec: 1pm – 11pm	Christmas Day: 11:30am - 1:30pm	New Year's Day: 12pm – 11pm
23rd Dec: 12 – 11pm	Boxing Day: 12pm – 11pm	

The Phantom Sprayer

It is that time of year again, dark winter evenings winter weather and Christmas around the corner, but your four legged friends still need exercising, so once again I am asking that you take care to pick up their mess in a bag and bin it. I do believe our village is cleaner although sadly there are still those who turn a blind eye and inconsiderately leave the mess for other unfortunate people to take home on their shoes.



On a different subject, next time you visit your vet please ask about tick born diseases which are varied and the danger is increasing - some zoonotic (that means can be passed on to humans) from ticks now being brought in from the continent, since the pet passport regulations were lowered. There are preventative treatments and your vet will advise you what to use to keep your pet safe thereby also keeping your family safe too.



Oakley Educational Foundation

This Foundation exists to assist young people between the ages of 16 and 25, who live in the Parish, with grants towards the cost of books and tools, etc. in furtherance of their education.

Applications are accepted in the months of May and November and must be accompanied by receipts of purchase. Application forms can be obtained from the Clerk, Louise Tunley.

For further information, or for an application form, please contact Louise Tunley on 07917 462213, by post at 19 Goldington Road, Bedford, MK40 3JY or by email at louise_tunley@yahoo.co.uk.

Planning Applications – Guidelines explained by Councillor Pat Olney

Ideally anyone wishing to develop an extension or new build should discuss it with their affected neighbours and see if it might impact on their house or garden. Whether you do this or not, if it needs planning permission it will go to the borough council for consideration by the planners.

Once the planners have validated the plan they will let the close neighbours know, advertise it close by and send it to the Local Parish Council for comments. If you or any resident is happy with the planning application nothing needs to be done unless you wish to confirm to the borough planners and the Parish Council Clerk that you support the application.

If you have an objection to the application, then it is good practice to let one or more of the Parish Councillors and the Borough Councillor know so that they note your objection. They will not know every circumstance pertaining to your residence and can take your objection into account when considering the application.

The Parish Councillors will listen to your objections or support when they consider the planning application. The Borough Councillor will also listen to and consider it when looking at the application. If it is a minor application or a large one that will cause problems to residents the Parish Councillor will consider it at an open meeting of the Parish Council, otherwise it goes to a subcommittee of the Parish Council. The Parish Council will then

either support the application or object. They then send their support or objection with reasons to the Borough Planning Department.

If the Parish Council object to the planning application then normally that will go to the Borough Planning Committee for their consideration. The Borough Councillor can "call in" the application to the Borough Planning Committee but needs to give good reasons for that "call in". In both these cases the application and your objection will then go to the Borough Council Planning Committee for consideration.

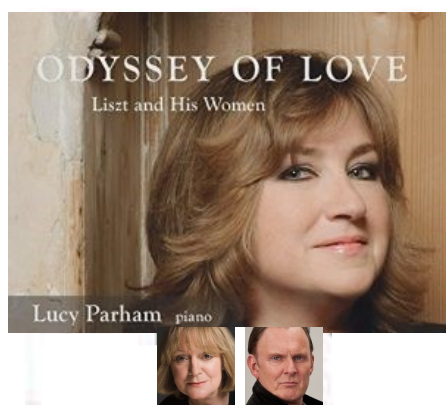
As an objector you have the "Right to Speak" as does the Parish Council if they have objected. The applicant also has the "Right to Speak". The Borough Councillor can make a statement on the application. If you or the Parish Council have objected to the application, or it has been "called in", the borough will inform you when it will be heard at committee. The letter will state that if you wish to speak you need to register by Friday lunch time before the meeting on the following Monday.

After reading the report, listening to representations and asking questions of everyone including officers the councillors on the committee will make a decision based on planning reasons.

If it is refused the applicant has time to appeal the decision.

If it is approved the objector or the Parish Council cannot appeal the decision.

Sharnbrook Mill Theatre Trust



SUNDAY 11th FEBRUARY 2018

A composer portrait
by the world-renowned pianist LUCY PARHAM,
with readings by

JOANNA DAVID & ROBERT GLENISTER

At The Quarry Theatre at St Luke's,
St Peter's Street, Bedford, MK40 2NN

Champagne Reception: 6.15pm - Performance: 7.00pm

TICKETS: £20, ARE AVAILABLE NOW from

The Quarry Theatre Box Office (01234) 362337

or book on-line: <http://www.quarrytheatre.org.uk/tickets>

Monday 12th – 17th March 2018 at 7.30 pm

THE FARNDALE AVENUE Housing Estate Townswomen's Guild
Dramatic Society's Production of MACBETH – a comedy

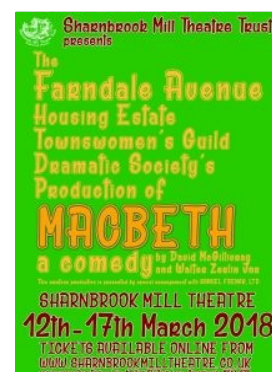
----- By David McGillivray and Walter Zerlin Jr. -----

The Townswomen's Guild ladies mount yet another assault on the classics with a startlingly original production of Shakespeare's *Macbeth*, staged to get them to the Welwyn Garden City Finals. Under the carefully mascara'd eye of adjudicator George Peach, all events conspire hilariously against them...

----- Tickets available from 1st February -----

(£1 booking fee) on-line: www.sharnbrookmilltheatre.co.uk/tickets
or in person from Pick-a-Lily Florist, 61 High St/Park Lane, SHARNBROOK

An amateur production by arrangement with SAMUEL FRENCH LTD





Youth Club Update

Youth Club in Oakley is continuing to get busier and better with our members. We have limited space but we have tried our best to ensure our members have a

good time when they come to Youth Club each week. This term we have been baking cookies, flipping pancakes and hope to make some lovely treats for Christmas. In the main hall we usually have table tennis, pool and another activity. We also have our games room upstairs with all the techy stuff and downstairs our snug room where you can simply chill.

Working and studying in this environment in my other roles I know how important it is for young people to become more independent and develop their social skills and confidence. I know our members can meet with their peers in an informal setting which is safe and accessible. I like our members to use the facility to make their own programme and activities whilst developing a sense of appreciation for their community. We do not preach, teach or enforce activities. We just encourage, support and show an understanding of respect for each other, their surroundings and to the community they live in.

This term we had a boxing demo with Bobby Bangher Boxing. Some of our members joined in and Bobby showed them some great pad skills which they all took turns at. I think we had a few Boxing champs in the making. We have also introduced a new basketball game which our members are enjoying. We organised a games night as I was keen to get everyone involved. We had no other rooms open and we all joined in. We played 'minute to win it' which involved lots of fun and silly games to be played in teams. This encouraged our members to share, plan, participate in team work and of course have FUN!

This term we welcomed a new team member, Enida. Enida is great and is a local so knows a few of our members already which is helpful. I am sure we will be doing lots more cooking as Enida has lots of catering experience. In a previous role she worked for Buckingham Palace which our members were very impressed with. Last week she had 24 members through the kitchen making and decorating pancakes.



I would like to say a massive **THANK YOU** to the Oakley Carnival Committee for their generous donation of £200 for the Youth Club. I personally know how hard it is to run events and the Carnival was a great success and is a great way of supporting local groups. We are very grateful. The money will go towards a shed. Some nights we have 30-40+ members so our space is limited. The shed will be very useful for our Youth Club as we can put our noisy members in there... only joking, we will use the shed for much needed storage. Thank you.

Over the Christmas period I am hoping to paint, carpet and tidy our Youth Club so if anyone has any paint, off cut carpet or can lend a hand then please get in touch with me. I also have a collecting pot at the local shop. If you any loose change you can always pop it in there. Even if you are having a clear out whilst preparing for Christmas and think something may be useful for our Youth Club then please let me know. We spend monies on ingredients, equipment and other items that may of interest to our members.

Finally, we are open to all young persons aged 11-14 from 7.30 – 9pm £1 entry. If you would like to come along then you will be very welcome.

Dawn Pither



School Governance



Co-opted appointments to the Oakley Primary Academy Local Governing Body

Within Sharnbrook Academy Federation we want the best for all children, with our work focussing, as you would expect, on the quality of the education they receive. As is the case with all Sharnbrook Academy Federation schools, Oakley Primary Academy is supported in this aim by their Local Governing Body (LGB) which is made up of representatives of the parent body, staff and other community representatives.

We are currently seeking to co-opt governors to join the Oakley LGB. This is an excellent way to find out more about how the school works and support the education available to the students who attend. As you will know, we have recently changed the age range within our schools and the support and challenge of an effective LGB representing our stakeholders will be vital as this progresses. We have a maximum of 5 co-opted governors on the (LGB) at any time.

If you are interested in this role then you will need to complete an application form telling us a little about yourself and what skillset you have to offer the board.

If you would like to find out more information on the role of the Local Governing Body or you would like an application form then please contact Tracy McDonagh via email at tmcdonagh@saf.org.uk or by post Tracy McDonagh, c/o Great Ouse Primary Academy, Seaforth Gardens, Bedford, MK40 4TJ.

Application forms can also be collected from Oakley Primary Academy.



Uncomfortable with letting strange people into your home?

We are an **all-female** team of interior painters and decorators, working in the north beds village area. Fully experienced in hanging wallpaper, painting – including paint effects, restoring and repairing surfaces, wallpaper stripping and all general home decorating. We are all individually CRB checked, will provide references and testimonials showing the standard of our workmanship giving you peace of mind. We will come to your home to discuss your exact requirement, offer advice and produce a free written specification and quotation. We will then arrive on time, keeping disturbance to the minimum and deliver a quality job using only top quality materials.



OAKLEY ANGELS

The all-female painting and decorating team

- Trustworthy
- Experienced
- Guaranteed work
- Peace of mind
- High quality work at a reasonable price

Phone: 07989 778345
or: 01234 822499

Oakley Allotments



Now in to our eighth year, another satisfactory year at the allotments draws to a close with many of the plots occupied and being worked on. We have a few more tenants from outside the village and no waiting-list.

It has been a less-than-great growing year with wet periods, some dry periods and not very high temperatures. A slow start for us turned in to a successful year. Despite some apprehension early on, the results have been better than expected and continue to provide enjoyment and, most importantly, fresh and tasty vegetables. Not much watering was needed through the year and the water-butts were not often empty.

With some element of planning (despite my continuing assertion that it's all a happy accident) we seem to have provided ourselves with a useful bounty through the summer, which looks likely to continue through this winter, as it did last winter. If we get snow this year, then that may well change.

The chard is under fleece, celeriac is doing nicely and with less obvious slug-attack than last year's meagre crop. Kale and broccoli are healthy now that the threat from caterpillars has passed and whitefly have been subdued by the lower temperatures. I don't begrudge cabbage-white butterflies a small share of my brassicas, just not all of them. Leeks are rallying after an attack of moth and are re-growing in strange contorted shapes - interesting.

Oakley Show was a great success and well-supported by allotmenters and others around Oakley. I entered eleven classes and won eight prizes, including two firsts. No-one was more amazed than me, although my sugar-free courgette chutney remained untasted. I have to admit that its appearance was not the most alluring.

Last week I started to harvest parsnips, following the accepted rule that they are best after a frost. The first three parsnips I came to were monsters totalling 3.5kgs and very edible when roasted. Carrots have been successful after first sowings failed to show, as last year.

Other successes: 104 courgettes (3 different varieties), over 32lbs of blackberries, 25lbs of potatoes (grown on a whim as we don't grow many normally), over 44lbs of runner beans, 13.5lbs of strawberries (we have now planted 4 different varieties to extend the picking season), 7lbs of raspberries, 6lbs of gooseberries. Sweetcorn was late

starting but turned out quite well. Fennel, late starting this year, is now doing surprisingly well under glass.



Failures: one butternut squash from 3 plants. Tomatoes blighted outdoors due to low temperatures and damp conditions, stunted indoors due to low temperatures and poor light. Peas and broad beans - I don't know why I bother with them but I will win in the end.

Our plot is the best it has been so far; we have the weeds largely under control, including the persistent convolvulus, which we dug out to quite a depth, its roots resembling masses of tangled spaghetti. Considering the amount of time we have been able to spend there (probably no more than 80 hours over the entire season) the results have been great, the effort rewarding and all extremely therapeutic.

I highly recommend the pastime - please contact me if interested.
Steve Nicholas



BLACK AND WHITE REVIVAL

Established in 1992 specialising in:

Photograph Restoration
Darkroom printing : Hand Colouring
Archival Family History Storage
Antique and Repro. Frames
Old Photographs of Bedfordshire c1910



Helen Dawkins LRPS

01234 782265

www.blackandwhiterevival.co.uk

Almond Garage Doors Ltd



- Servicing Bedford & Milton Keynes
- Spare Parts (including obsolete makes)
- Existing Doors Automated
- EMERGENCY Call Out Service
- New Sales & Installations (Free Quotations)



01234 828953

info@almondgd.co.uk

Fax: 01234 826024 ☀

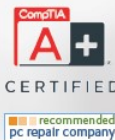
College Farm, Oakley, Beds, MK43 7RX

www.almondgaragedoors.co.uk



Oakley.IT

maintain ■ IT
repair ■ IT
train ■ IT



Jan Rymarz – Principal IT Technician / Trainer

Fast PC and Laptop Repairs

Clear and Friendly Training

Fast and Efficient Service

Years of experience and services covering everything!

A few recent customer comments

"Great service"

"Trustworthy & reliable"

"Efficient & Affordable"

"Highly recommended"



07401 250 118

help@oakleyit.co.uk | www.oakleyit.co.uk



oakley Motorcycle club

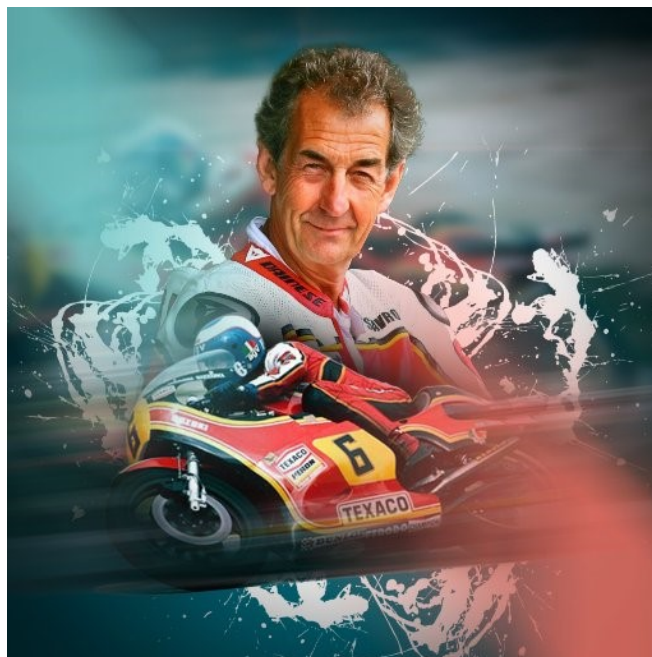
The Oakley Motorcycle Club season ended with our Annual Memorial Ride on Sunday 8th October. Thankfully the weather was fine which resulted in 50 motorbikes and 60 members and partners attending Oakley Club for the 10am departure. The route took us via country lanes across to Hartford Marina near Huntingdon for coffee before returning to Oakley Club for the complimentary sausage and chips.



It was especially poignant that upon return from the Memorial Ride, we were notified that a new member to OMC had died the previous day. He was returning from the annual British Legion Riders "Ride to the Wall" fundraising event where he had ridden to the national Memorial Arboretum in Staffordshire with others to pay his respects. Darryl Souza aged 26, from Rushden, who joined OMC in June this year was involved in a collision with a car at Clipston crossroads, Northants



On a more cheerful note, OMC are holding their annual general knowledge quiz at Oakley Club on the evening of Thursday 7th December, all proceeds going to the East Anglian Air Ambulance and after Xmas will come the annual OMC AGM on Thursday 15th February with the legendary "Pillock of the Year Award" presented to the member, who, in the Chairman's opinion, has done the daftest thing in the last 12 months. This usually attracts many nominations!



Finally, as most are aware, legendary Racer, Team Manager, After Dinner Speaker and TV pundit Steve Parrish was present at OMC in August to present the Bike of the Year Award. He has been booked by OMC for Friday 23rd February 2018 for "An Evening with Steve Parrish". The location and price is yet to be finalised but tickets will be on sale soon and will be open to all. Please check our website and the noticeboard at the village Post Office for information.

Baysie
Roger Bays Chair - OMC

BROWNS WOOD 2017/18

Get Involved and Learn New Skills

Get involved with monthly volunteer tasks and help manage Browns wood this winter. The tasks will involve ride Management, coppicing and hedge laying.

Coppicing the woodland rides to allows more light in and encourages the wildflowers and butterflies. In January the hedge laying along the bridal path will be completed.

Saturday 23rd December 11am-3pm

Sunday 28th January 11am-3pm

Sunday 25th February 11am-3pm

Please wear old clothes and stout boots preferably with toe protection. Gloves, tools training and refreshments provided.

For more information please contact Jon at Priory Country Park : prioryrangers@bedford.gov.uk or phone 07799 864086.





Oakley Village Hall

Church Lane,
Oakley,
Bedfordshire, MK43 7RJ

A well-appointed village hall
Main hall with stage and PA system
(Main hall is air conditioned)

Separate meeting room with bar

Well equipped kitchen


For information and bookings
please telephone 07788 796996




We support community-driven sustainable development projects in Malawi, helping HIV/AIDS orphans, vulnerable children and their families. Our work is driven by the communities we work with. We recognise the importance of Early Childhood Development and believe that all children and their communities should have the resources and assistance to ensure that all children can grow and develop in their communities free of hunger and with access to education and basic health care.

Jacky Mould





BADMINTON






Get fit whilst socialising at
Oakley badminton club 😊

WEDNESDAY NIGHT

7:30-9PM

LINCROFT SCHOOL

For further details call Alyn Walker –
01234 824530 or 07557 441206

NIGEL L. WILLE

PLUMBING & HEATING ENGINEER

GAS SAFE REGISTERED

BOILER REPLACEMENTS

FULL CENTRAL HEATING INSTALLATION

BATHROOM SUITES

RADIATOR REPLACEMENTS

TAP REPLACEMENTS

ALL DOMESTIC PLUMBING, HEATING WORK
AND REPAIRS UNDERTAKEN

FOR A FRIENDLY SERVICE
PLEASE CALL NIGEL

Tel: 01234 822962

Mobile: 07778 800595

Email: nigel.wille@sky.com



theWI

OAKLEY WI



Meets at 7.30pm on the second Tuesday of the month at Oakley Village Hall.

TUESDAY 9th JANUARY 2018



Renowned for his brilliant photography, RICHARD REVELS shares part of his collection of wild-life images from far and near in an illustrated talk entitled WILDLIFE HUNTING WITH A CAMERA.

TUESDAY 13th FEBRUARY 2018

THE NATIONAL TRUST IN THE 21st CENTURY

DOROTHY JAMIESON brings a volunteer's view of developments in the last twenty years with special reference to Stowe Landscape Gardens and Willington Dovecote and Stables.

TUESDAY 13th MARCH 2018

AGM and QUIZ

Sue Brecknock has devised another of her brilliant quizzes for us.

TUESDAY 10th APRIL 2018

A CHOCOLATE EXPERIENCE

SUSAN STEVENSON, enthusiastic chocolatier, talks about working with chocolate and brings a selection for us to sample and buy. This meeting is open to all. £4.00 entry includes tea or coffee, biscuits - and chocolate!

We are happy to welcome visitors and new members. Apart from the monthly meetings, members enjoy outings, a knit and natter group, book club, lunches and theatre and cinema visits.

For further information telephone 824296 or 826844



OAKHAM DECORATORS LTD

INTERIOR - EXTERIOR - DOMESTIC - COMMERCIAL

PROFESSIONAL & RELIABLE LOCAL DECORATORS

With over 30 years experience

Specialists in wallpaper hanging

We can help with:

Plumbing ❖ Carpentry ❖ Plastering ❖ Electrical needs

Competitive prices for all trades

We are happy to help and advise

Call us now for a free no obligation quote call

Darren Hooton 07743 176201

Ray Quinney 07885 644973

OAKLEY GARDENING CLUB



Meets at 7.45pm at Oakley Methodist Hall on the third Monday of the month. Looking head....

MONDAY 15th JANUARY 2018



'SNOWDROPS' is the subject of DEBBY HORS-MAN'S illustrated talk.

MONDAY 19th MARCH 2018

'NATURE THROUGH THE SEASONS IN A BED-FORDSHIRE VILLAGE'

Ornithologist, author and lecturer, PETER HOLDEN shares his photographs and observations.

MONDAY 16th APRIL 2018

We venture further afield with DAVID LIVER-MORE. His illustrated talk is on 'WILD FLOWERS OF SPAIN AND PORTUGAL.'

Visitors are welcome at any of our meetings.

For further information contact

Anne McNab 823788

John Donovan 824703

Anne McNab

Voted
No 1 Salon
in the UK

Hazel Kaye



Hair and Beauty



*"Enjoy a world of Tranquility, Harmony
and Creativity" Hazel, Proprietor*

Family run business



Stockists of premium hair, beauty & fragrance brands and gift vouchers. Purchase online.



40 High Street, Oakley, Bedfordshire, MK43 7RG

Tel: 01234 826502, e: hazel@hazelkaye.com www.hazelkaye.com





Oakley Sports & Social Club

Family & Sports Bar

Fun for kids Quality Ales Fantastic Facilities
Friendly Atmosphere



Below Average Prices Freshly Cooked Food

Saturday 23rd Dec - 12pm - 11pm
Christmas Eve - 12pm - 11pm
Christmas - 11:30am - 1:30pm
Boxing Day - 12pm - 11pm

New Years Eve - 12pm - 11pm
New Years Day - 12pm - 11pm

OSSC Kitchen

Download the full menus
from our website

Thursday

6pm - 9pm
Full Menu

Friday

5pm - 8pm
Pizza Night

Saturday

4pm - 6pm
Full Menu



824977



info@oakleyssc.com



http://oakleyssc.com