



Oakley Newsletter



Winter 2020

Number 85

Look inside for

Christmas Church Services

Planning Group Update

Oakley Back Through Time

Remembrance Sunday 2020

Shopping Safely Online

Youth Club Update

Autumn at College Farm

Mick & Barbara Retiring

Pa\$\$W0rD Protection



Front Cover : Pheasant
By Laura Saunders

The Oakley Newsletter

is published quarterly by Oakley Parish Council and delivered by parish councillors free to every house in Oakley – about 1,000 copies.

Opinions and information

in the Newsletter, both text and adverts, may not be endorsed by the Editor or the Parish Council.

Next issue

Final copy date for the
Spring issue is 19th Feb 2021.
The publishing date is 1st Mar 2021.

Advertising rates

Colour Advertisements
Quarter page: £30

Half page: £60

Whole page: £120

Four consecutive quarter page adverts -
discount 10%

Black & white advert rates are available
upon request.

Loose inserts, any size up to A4: £100
Invoices will be issued by Ann Paice, with
payment to Oakley Parish Council.

Editor

Bill Chalker
13 Beverly Close
Oakley
MK43 7SH
07789 997733
bill@chalker.uk.net



Printers

White Hart Press
58a York Street
Bedford MK40 3RL



Hello Children

look out for
Ten more
little ones



Parish Council News

Winter 2020

Hello Everyone

I am finding it very hard to believe that we are fast approaching the end of a very different year for everyone. For long periods of time not being able to see many of our loved ones and not being able to do the things we 'normally' do has been hard. We do not like it but the overriding message has to be to stay safe and comply with the rules with a view to not spreading the virus. A couple of days ago I did, however, see the contractors putting up our Christmas Lights and I was reminded that Christmas is just around the corner.

Since the first lockdown all Parish Council meetings have been held virtually and Ann, the Parish Council Clerk, has worked from home. Unless someone can tell me to the contrary, I do not think any Council matters have been neglected. All our contact details can be found in the newsletter inside the front page of this publication, in The Directory and on the website.

Only a matter of a few weeks ago we remembered the fallen from the first and second world wars on Remembrance Sunday and Armistice Day. Whilst they are very solemn occasions it was so wonderful to see the brightness and warmth from the thousands of red poppies so beautifully knitted and crocheted adorning numerous parts of our village. We were so lucky to have a committed, enthusiastic and dedicated group of ladies from Oakley Women's Institute, who I understand call themselves the 'Knit and Natter Group.'

I am sure everyone would like to join me, on behalf of the Parish Council, in thanking them all very much for their labours of love. I have every reason to believe that there might be one or two pictures showing the poppies at the various locations around the village.

Reproduced below are the contents from a draft letter that I have prepared which I hope will be jointly signed by myself and a representative from Sharnbrook Academy Trust to go out to all parents

Continued on page 3

OAKLEY PARISH COUNCIL

PARISH CLERK

Ann Paice
31 Radwell Road
Milton Ernest
Bedford, MK44 1SH.
07873 887370
parishclerk@oakleyvillage.co.uk

CHAIR

Paul Phillips
3 Station Road. 824260
paulphillips65@gmail.com

VICE CHAIR

Jane Walker
(Parish and Borough councillor) 11 Dewlands
07952 879587
jane@janewalker.co.uk

Jonathan Abbott

(Parish and Borough councillor)
13 The Furlong 950868
jonathan.abbott71@icloud.com

Pat Olney

33 Station Road. 824384
pat.olney@btopenworld.com

Sara Fardon

61 Lincroft. 824516
sarafardon@yahoo.co.uk

Michael Frampton

The Little House, The Drive
822181
michael_frampton@btinternet.com

Phyllis Jones

35 Ruffs Furze 910187
phylmaj@gmail.com

Stephen Nicholas

44, Grenidge Way 824345
sbnicholas@aol.com

Gerry Sansom

21 Pavenham Road.
823295
gerrysan-
som@btinternet.com

Robert Saunders

College Farm. 822328
rjsaunders5591@gmail.com

Paul White

20 Reynes Drive. 825472
paulwhite20rd@gmail.com

of children attending Oakley Primary and Lincroft Secondary Schools concerning school run parking, something that has troubled us for a very long time.

Irresponsible or antisocial parking/leaving of vehicles at school times.

The parking or leaving of vehicles in the vicinity of our schools at drop off time in the morning and pick up time in the afternoon has been a problem that has blighted this, and probably every village in the country, for many years. The fact that it is a difficult problem does NOT mean we have to live with it and do nothing. Collection times in the afternoon do seem to be far worse than the morning drop off for obvious reasons. It should be made clear at this point that many people park responsibly, arriving in good time. The problem seems to be caused by those who arrive late and fill those spaces left by the compliant for example bus stops, zig zag lines, they park across drive-ways and actually on road junctions which is contrary to the advice in the Highway Code and can be against the law. The roads affected are Station Road, Reynes Drive, Lincroft, Flax Close and Lovell Road. As a consequence of this dreadful parking and manoeuvring, a few weeks ago a school-child with a bicycle was allegedly struck by a car. Thankfully, no serious injuries were sustained, however this was maybe a warning and if this awful parking continues there will inevitably be a serious incident, something none of us would want to happen.

On hearing about this two members of Oakley Parish Council and the Ward Borough Councillor called a meeting and invited representatives from Bedfordshire Police, Bedford Borough Highways and Sharnbrook Academy Trust to join us and a site meeting was convened some days later.

The options available to us seem to range from asking or pleading with Mums and Dads, or whoever is doing the drop off or pick up, to be COMPLIANT AND THINK OF OTHERS PARTICULARLY OTHERS' CHILDREN AND NOT ONLY YOURSELF OR YOUR OWN CHILDREN. Please ask yourself if you really do need to park as close to school as you do or try to, when with a bit of forward planning you could do something else? If asking for cooperation does not work, we would then very quickly need to look at other options, but there is a good chance it could work, because it is hard to believe that anyone would want to be the victim or indeed culprit of something horrendous happening. These other options could include;

Park and walk to and from school

Increased enforcement of the zig zag lines by re-positioning of the cameras

Increased Police patrols where possible.

No verge parking regulations

Double yellow lines at some of the locations enabling increased enforcement by Borough Council patrols and cameras.

We have to ask ourselves if we want our village full of double yellow lines? Where double yellow lines are put down often, they are abused

or the problem is moved down the road. Remember the Police do not need double yellow lines: their powers are wide covering offences where penalty points can be imposed in addition to monetary punishment. This can expedite disqualification and impact on insurance renewal.

Sometimes the best people to solve a problem are those people who cause it, if they are so inclined. We do believe that together we can improve the situation, but only if we all buy into it trying to eradicate this unacceptable behaviour PLEASE.



Wheelie Bins

Moving from cars I would like to go to Wheelie bins and ask everyone to be responsible with their wheelie bins especially when they put them out for collection. When you put them out please think Covid 19 and ensure they are on your property and not on the footpath so at no time is the pavement width reduced where social distancing could be compromised. Unfortunately, bins are often left on the pavement by those emptying them and it is at these times that wheelchair users, people with pushchairs and buggies have real problems and pedestrians have to step into the road. The pavement width can be considerably reduced and in the present climate that too can be a problem making social distancing more difficult. Where possible and if you are able it would be good if, while taking adequate precautions, bins could be returned to their rightful drive. Please do not leave them in the middle of the drive.

Communicating with the Village Residents

We are always looking at the most effective and timely way to bring matters affecting the village to our residents' attention and in the main we do

Continued on page 4

this reasonably well, because ALL matters that are discussed at our Parish Council meetings will appear on the meeting agenda. One week before a meeting the agenda is put on the Village web site and the village notice board. Following discussion at the open Parish Council meeting minutes will be prepared and approximately one week later they will be put on the web site and the notice board outside the Post Office.

We then of course have our quarterly Newsletter which we try to use as much as possible but sometimes, because of short notice and other constraints, we cannot include some items because the deadline has been missed or the next issue is too far away.

Then there are those matters affecting the village where we really do have to do something different because of time constraints placed upon us elsewhere.

A good example of this was the Full Planning application from Network Rail seeking Full Planning permission for Highfield Road Railway Bridge. In truth the changes proposed are not that much different to what is there now for which they received temporary planning permission this time last year.

This will not be the only unacceptable change to our village and going forward we need to find the best way to bring such matters to the attention of as many people as we can. Planning matters from the Borough Council invite comments in support or objection. The Parish Council will always comment in accordance with our Neighbourhood Plan which was drawn up with full consultation with the village.

In most cases this is fine, though I would never discourage anyone from expressing their own views. Where planning applications affect individuals directly they should comment if they want to. The real need exists for those other matters that people should know about. In addition to what we do now the Parish Council has agreed to post agendas and consultations on which Council has been asked to comment on Oakley Parish Council's official Facebook site which is www.facebook.com/Oakley.bedfordshire/

Other issues that we are anxious to bring attention to are those contained in another article in this Newsletter. They are East/West Rail and the Oxford/Cambridge Arc Bedford Borough Council Local Plan Review. Each or both could have massive implications for Oakley in the future and that is why you need to know how your life, and indeed the life of your family, may be affected.

Christmas lights

For obvious reasons the Christmas lights were switched on quietly on 28th November 2020. It is disappointing that we could not gather at St Mary's Church as we normally do to enjoy Carols, mince pies and mulled wine, but it is for the best and that tradition can continue in years to come. The lights should put a smile on our faces and remind us what is just around the corner.

As I write this we are still in lockdown, but I hear that infections of Covid 19 are increasing in Bedford Borough which is very worrying. That is the last thing we want, so please observe whatever rules are in place at the time and remember hands, face and space.

And finally, thank you all for reading this Newsletter and as usual thank you to our editor Bill Chalker for producing yet another quality publication. Please keep safe, please keep well, have a Very Happy Christmas and let us hope and pray for the vaccines to emerge quickly and effectively so normality as we knew it, or as close to what we knew, will give us the prospects of a Happy New Year. Kind regards Paul Phillips.



WHITE'S

Lawnmowers & Garden Machinery

Sales ~ Service ~ Parts ~ Hire

Briggs & Stratton Service Centre







...& many more

LARGE SELECTION FOR ALL YOUR GARDENING NEEDS

01234 826066

info@whites-online.co.uk

www.whites-online.co.uk
College Farm, Oakley, Bedford, Bedfordshire, MK43 7RX

Voted N° 1 Salon in the UK

Hazel Kaye Hair, Beauty & Facial Aesthetics



Order/Book Online



"We look forward to seeing you soon!" *Hazel, Proprietor*

Stockists of premium hair, beauty & fragrance brands and gift vouchers



40 High Street, Oakley, Bedfordshire, MK43 7RG  
Tel: 01234 826502, e: hazel@hazelkaye.com www.hazelkaye.com

BEDFORD BOROUGH REPORT

In my last piece I spoke too soon about a return to some sort of normal. As I write this latest Borough Council Report we are in the middle of a four-week lockdown. I hope by the time you read this we will either be about to emerge from or have left it in its current form. You will have also seen that figures are still rising and if we return to exactly how we were prior to 2nd November, then unfortunately by Christmas we may be returned to some form of lockdown. In the Borough we are asking all residents to follow the guidelines issued after the lockdown is over. A big thank you to all for doing what is asked. This has meant that numbers in Bedford Borough are increasing more slowly than surrounding local authorities.

As part of the measures to help control the spread a New Covid-19 walk-in testing centre has opened at the University of Bedfordshire Campus in Polhill Avenue. This is operating on a walk-in basis for anybody in the borough who needs a test. It will be open every day providing testing for students at the University and local residents. It expands the local testing availability currently provided at Borough Hall and Prebend Street car parks in the town.

You can book a test online at nhs.uk/coronavirus, or by calling 119.

Test results will be available within 24-72 hours of completing the test. People testing positive should self-isolate for 10 days, with other people in their household needing to isolate for 14 days.

Please remember **Hands, Face, Space.**

Wellbeing

As we enter the ninth month of living with Covid-19 the Council is encouraging residents to look after their wellbeing.

In April, the council created a webpage, www.bedford.gov.uk/wellbeing, offering advice to Bedford Borough residents on how to look after themselves whilst at home during the coronavirus outbreak and beyond. With regular updates, the site offers advice and signposting to help residents stay healthy in what continues to be an extremely difficult and uncertain year.

Finances

The Borough Council is now facing a funding gap of £26million. Due to the impact of coronavirus, the Council has to manage the vast majority of this gap- £21.8million- in next year's Budget, which will be set in the coming months.

The impact of COVID-19 has affected services across the Council. New ways of working and

new demands are placing the council under unprecedented pressure in working to deliver care for the vulnerable and elderly while keeping vital day-to-day operations running in extremely challenging circumstances.

The Council is looking to maximise savings through more use of technology and the streamlining of council processes. This will build on the Transformation Programme which started in 2017 and has seen around 70 projects completed and £18million saved by working in a more efficient way.

However, given the size of the challenge the Council faces in 2021/2022 there is a need to make savings in how they deliver some services and introduce new fees for services such as planning advice.

Transport

Manton Lane/Clapham Road

The major work which affects the residents of Oakley currently are the on-going works on Clapham Road. The utility works are expected to be finished by Christmas, with further work on Manton Lane starting in the new year once the footbridge is installed.

The final phase of this work will be the installation of part-time traffic lights on the Fairhill roundabout. This work will be completed by March 2022. (see the map for more details).

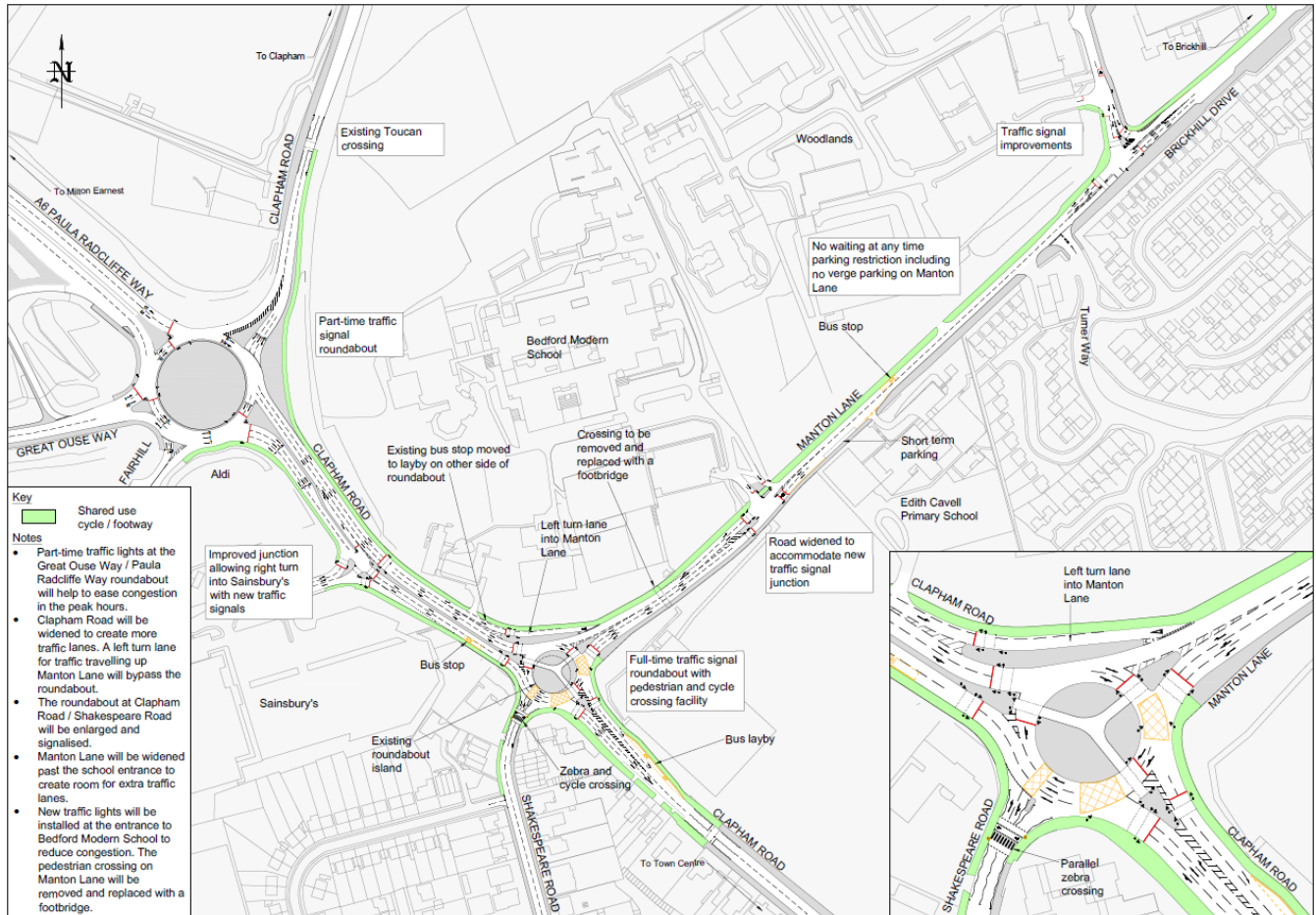
Bedford High Street

Temporary measures have been put in place to create more space for pedestrians and install permanent average speed cameras to enforce the 20mph speed limit.

Results of a survey on traffic flows in October, showed that both the volume of traffic and average speeds had increased compared to October 2019.

The permanent work on the High Street will include:

- Footways will be widened on both sides to create a more pleasant environment for pedestrians and shoppers
- New loading and short stay parking bays will be introduced
- A 20mph speed limit – enforced by average speed cameras (already introduced)
- High quality York paving and granite kerbstones will be used



More details can be seen at www.bedford.gov.uk/transportingbedford2020

Councillor Jon Abbott

Telephone: 07784 549180

Email: jonathan.abbott71@icloud.com

Almond Garage Doors Ltd



- Servicing Bedford & Milton Keynes
- Spare Parts (including obsolete makes)
- Existing Doors Automated
- EMERGENCY Call Out Service
- New Sales & Installations (Free Quotations)

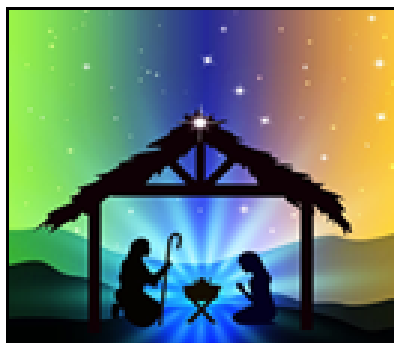
01234 828953

info@almondgd.co.uk

Fax: 01234 826024

College Farm, Oakley, Beds, MK43 7RX

www.almondgaragedoors.co.uk



SPECIAL SERVICES & EVENTS COMING UP

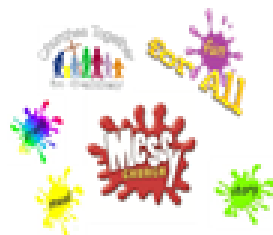


Sunday 6th December	10.30am	Zoom Christingle Service (see box)
From Sunday 13th December		Nativity Trail- email Sarah for a guide (see box)
Tuesday 15th December	6.30pm	Zoom Carol Service
Saturday 19th December	2.30- 4.30pm	St Mary's Church open for trail entries, and Christmas displays
Sunday 20th December	10.30am	Carol Service at Methodist Church*
Christmas Eve 24th December	11.30pm	'Midnight' Communion in St Mary's**
Christmas Day 25th December	10.30am	Zoom Family Worship with Communion
	10.30am	Family Service at Methodist Church*

* For Methodist services contact Revd Gill. **Booking Essential contact [Hilarie](mailto:Hilarie@bromhambenefice.org)

Messy Church 'Christmas in a Bag'

Bags will be delivered to Messy Church members in December. Lots of fun and crafts for all in the run up to Christmas!



For more details on all our events and for Zoom links visit

www.bromhambenefice.org or
www.northbedsmethodist.org.uk

***all live events are dependent on, and will be in line with, government guidelines.**



SUNDAY 6th DECEMBER

Zoom Christingle Service

Sign up with Sarah by Weds 2nd December to receive your Christingle pack and Zoom link ahead of our service.

FROM SUNDAY 13th DECEMBER

Nativity Trail

Search for crib pictures in windows around the village as we bring Christmas to you!

Find the pictures, solve the Christmas Puzzle and come along St Mary's on Sat 19th December 2.30pm- 4.30pm to hand in your entry, receive a prize and view our Christmas displays.*

Email: administrator@bromhambenefice.org for your trail guide

CONTACTS

St Mary's: Rev Catherine Wilson 01234 825665 vicar@bromhambenefice.org
Church Wardens: [Hilarie Worley](mailto:Hilarie@bromhambenefice.org) 262166 & [Graham Palmer](mailto:Graham@bromhambenefice.org) 07710 462535
Administrator Sarah: administrator@bromhambenefice.org

Oakley Methodist Church: Rev Gill Baalham 01234 930025 gill.baalham@methodist.org.uk
Church Steward: Jeanette Letch 825204

Remembrance Sunday 2020

As soon as the Prime Minister announced that Lockdown 2.0 was going to start on 2nd November we knew that Remembrance Sunday this year was going to be very different from usual. We had already cancelled the procession and asked wreath layers to only send one representative to the Memorial, but with all church services now cancelled we had to re-think our plans. What we were finally able to do turned out to be extremely moving and memorable and we hope that people were able to share it with us via our Facebook live stream.

The village was prepared for the day through the magnificent efforts of the WI Knit and Natter

group, who knitted and croqueted over 6000 poppies that filled our village with colour for the week running up to Remembrance Sunday.

Also the Memorial has been superbly renovated and looked after all year by Dave Ursall and it looked stunning covered in the knitted poppies.

Everyone was determined to make it the important occasion it always is, so it was the people of the village who made it so special. We started with Rev Paula Vennells, who although she did not want to be filmed for Facebook, gave the service a beautiful and moving start. We were then joined by former Lt Colonel, Ade Clewlow MBE to read the citation and list of names of Oakley's fallen. Catherine Knight played a stunning last post on the bugle, whilst the flag was lowered to half mast, bringing many of us to tears and she marked the end of the silence playing Reveille. We then laid wreaths from village organisations. The Scouts and Brownies had already visited the memorial earlier in the week to lay theirs as had the High Sheriff, Susan Lousada. We also had one surprise visitor who wanted to lay a wreath on behalf of the police. Chief Superintendent John Murphy was driving past just as we started the ceremony. He stopped and helped us close the roads for the silence and then laid his wreath with the others from the village.

On a final note, Ade had been devastated because his usual visit to the Cenotaph in London where he has previously been part of the procession, was not allowed, so he was especially pleased to be asked to join us. To thank the village, he researched the names of the Oakley fallen, finding the ranks of the men listed plus he found that there was one name who was listed in the records but not shown on the Memorial, Craftsman Leopold Plater. His name will be added as soon as possible.

Armistice day itself, on the 11th, was also marked with a raising and lowering of the flag and we were joined by a relative of Lance Corporal Harry Hart, one of the fallen from the first world war. He now lives in Milton Keynes but during the second world war he was evacuated to his relatives in Oakley and remembered the village fondly. He laid a poppy cross in remembrance, all of which we recorded live on Facebook.

Both videos are available on the Parish Council Facebook page, Oakley Bedfordshire.

Jane Walker, Speaker of Bedford Borough Council



Following lockdown number one we managed to restart face-to-face Scouting in September. We worked hard to make sure the activities and the Scout Hut complied with COVID restrictions and we followed advice from the Scout Association and the Bedford & Ouse Valley District team to ensure Section Evenings could go ahead safely. After such a long time away, it was wonderful to see all our Beavers, Cubs and Scouts again.



Among many other activities, the Scouts have been on a night hike, the Cubs toasted marshmallows around the fire, and the Beavers learnt about Remembrance Day and walked up to the Oakley War Memorial to lay a poppy wreath they had made. We also laid a wreath on behalf of the whole Scout Group.

We have had a few changes in leadership, with our Cub Leader stepping in to lead Scouts and a new Cub Leader joining us. Our Leaders have done an amazing job adapting to the new way of running Sector Evenings. We also have some great new signs on our Scout Hut, courtesy of Metrosigns, our contact email is now visible to anyone who is interested in learning more about Scouting in Oakley.

Unfortunately, lockdown number two has put a stop to Scouting activities again. But as we already have everything in place for safe Scouting, whether that be indoors or outdoors, we will bounce back as soon as we are given the go ahead from the Scouting Association.

If you would like to find out more about the Group, please email our Group Scout Leader at OakleyScoutsGSL@outlook.com. We have spaces for new members in all Sections, although we do have to keep numbers lower to allow for social distancing, and we are looking for volunteers to help us keep the Group running smoothly.

Sarah Davey, on behalf of Oakley Scout Group



Oakley Educational Foundation

This Foundation exists to assist young people between the ages of 16 and 25, who live in the Parish, with grants towards the cost of books and tools, etc. in furtherance of their education.

Applications are accepted in the months of May and November and must be accompanied by receipts of purchase. Application forms can be obtained from the Clerk, Louise Tunley.

For further information, or for an application form, please contact Louise Tunley on 07917 462213, by post at 19 Goldington Road, Bedford, MK40 3JY or by email at louise_tunley@yahoo.co.uk.



For all Pre-School Children
At St Mary's Church Oakley on

Thursdays during School Term 10am to 11.45

Crafts, Painting, Play, Music, Stories and a
Healthy Snack plus tea/coffee for the adults

More detail from Dorothy Palmer at
01234 823959



SYDNEY HOWARD LOVELL MEMORIAL ALMHOUSES AT OAKLEY

The Lovell Homes is a small independent living community comprising two bedroomed bungalows and one/two bedroomed flats

Applicants over the age of 60 are invited to apply to go on the register of interest for a property - priority will be given to those with an agricultural or related background.

If you would like to be considered please visit the website www.lovellhomesoakley.co.uk

Or contact the Clerk :

Mandy Newton

On 07736 466965

Registered Charity Number : 200480

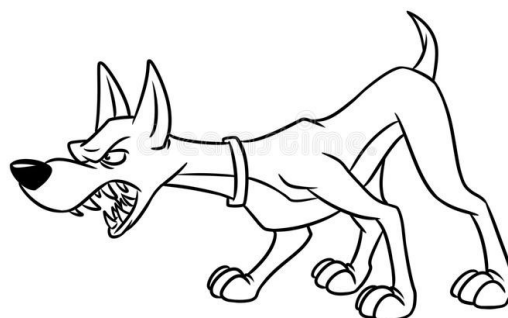
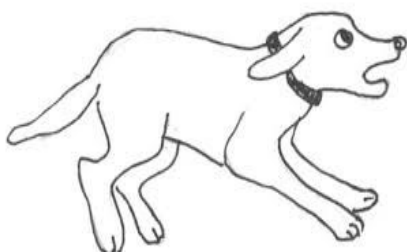
Phantom Sprayer

We sometimes hear of very distressing cases on one of our favourite dog walks or the Station Road Field, which is an extremely popular dog walking area, of a dog running off the lead and then attacking a smaller dog or frightening another walker.

I urge people to please take responsibility for their dogs, we all like to see them running free to sniff around and enjoy their walk but if another person or dog is harassed it can turn into a nasty situation for both of the dog owners.

No-one wants to see anyone's dog injured and the need to pay expensive veterinary fees, for what is probably the result of a thoughtless moment. Sadly, it can also lead to the heart-breaking death of a smaller dog if attacked by a large dog and the owners are not able to separate them in time. Please therefore, if you see someone else about when you are walking, keep your dog on the lead and under your control until you are absolutely certain there will be no dangerous or unfortunate occurrence.

There are also other people walking without a pet, who are nervous of dogs, particularly larger or muscular type dogs, so please respect those people too and take the necessary action to keep your dog totally under your control.



Editors Note : These images are illustrative and not breed specific

Autumn at College Farm

The combine finally finished harvesting on 17th September in a late maturing crop of spring beans. It is always a relief to get finished and you can crack on with all the other jobs that need doing.

After this we had a few weeks of sunny weather, the ground had gone hard and dry and another first for me was making some September hay. The yield was not huge but the quality was excellent, probably some of the best hay we had made all year. Then there was a big debate; to begin planting next years crops or not. After last year I was keen to get on while the going was good but plenty were telling me it was too early, too dry and you'll never get two seasons the same....

Luckily I decided to make a start on 21st September and we had a week with dust flying behind the drill in glorious sunshine. We did not push on too hard as it was still early and the forecast was looking settled. On the morning of the 29th I was woken up by heavy rain on the window, half an inch had fallen and it stopped us working on the land. We were glad of the rain to germinate the freshly sown seeds, what we were not glad of was the four inches that fell over the next ten days. This caused the river to flood and our drilling plans were put on hold for a while. Last year just seemed like a warm-up for this year.

Throughout October we have managed to drill on six days, and this was often into less than ideal conditions. We have managed to drill more acres than last year, mainly because I managed to buy a second wet weather drill. Also due to the hours we put in, for which I am thankful to the lads that work for me, the drills when the going was good

were often still on the go at midnight and on one day we managed to drill 265 acres!

We still have plenty to do if the weather allows but it currently seems to rain every other day so we have moved into our winter routine of jobs. This includes cutting hedges, machinery maintenance, tending to cattle and loading out grain which was harvested in the summer.

Looking back over 2020 it really has been a year to expect the unexpected. This time last year if you had mentioned lockdown I would never have believed it would actually happen. We have had some glorious weather and also some awful weather. Making hay in both May and September is unusual and shows how the seasons are changing. I am hoping we never see another year like 2020, the extremes of weather have not helped farmers and I have not enjoyed all the restrictions Corona has brought.

Farmer's wife duties...

The herd of cows we bought in November last year were grazing at the front of the house, which you may have seen when walking past. One wet morning they looked extremely sorry for themselves so we decided to bring them into the yard, where they will stay until next Spring. They are growing nicely and we are looking to get some more later in the year.

My art business, LJ Creative Studios, has seen an uplift of sales and it is nice to see people supporting small businesses. I have expanded my homeware and gift range and now offer my tractor design on oven gloves, aga tops, chopping boards and stationery. I also have a new bone china mug design featuring my five best selling tractors and have recently launched gift boxes. Feel free to

check out my website, ljcreativestudios.com, where you can browse and buy. I also offer local collection.

I held a Charity Gift Fair at the end of August to raise money for Bedford NHS hospital and was blown away by the number of locals who showed their support. Thank you so much! I will certainly be organising more next year so watch this space.

All that leaves us to say is to wish you a very Merry Christmas, hopefully we can spend it with our friends and family and fingers crossed for a prosperous 2021.

Henry and Laura Saunders



JUST INLINE WINDOWS

WINDOWS, DOORS & CONSERVATORIES

EMAIL: info@just-inlinewindows.co.uk

WEB: www.just-inlinewindows.co.uk

TEL: 01234 826740 | 07817 129744



WINDOWS / DOORS / UPVC / ALUMINIUM / BIFOLDS / LANTERNS

Just Inline Windows is a Bedfordshire-based double glazing business specialising in all aspects of glazing installations. We are based in Oakley and cover Bedford, Milton Keynes, Northampton, Luton & surrounding areas. We have a reputation built on high quality services, great value and an exceptional level of customer service and aftercare.



LOTS OF LOCAL RECOMMENDATIONS
CONTACT US FOR MORE INFORMATION

Oakley Neighbourhood Plan Group – Pat Olney

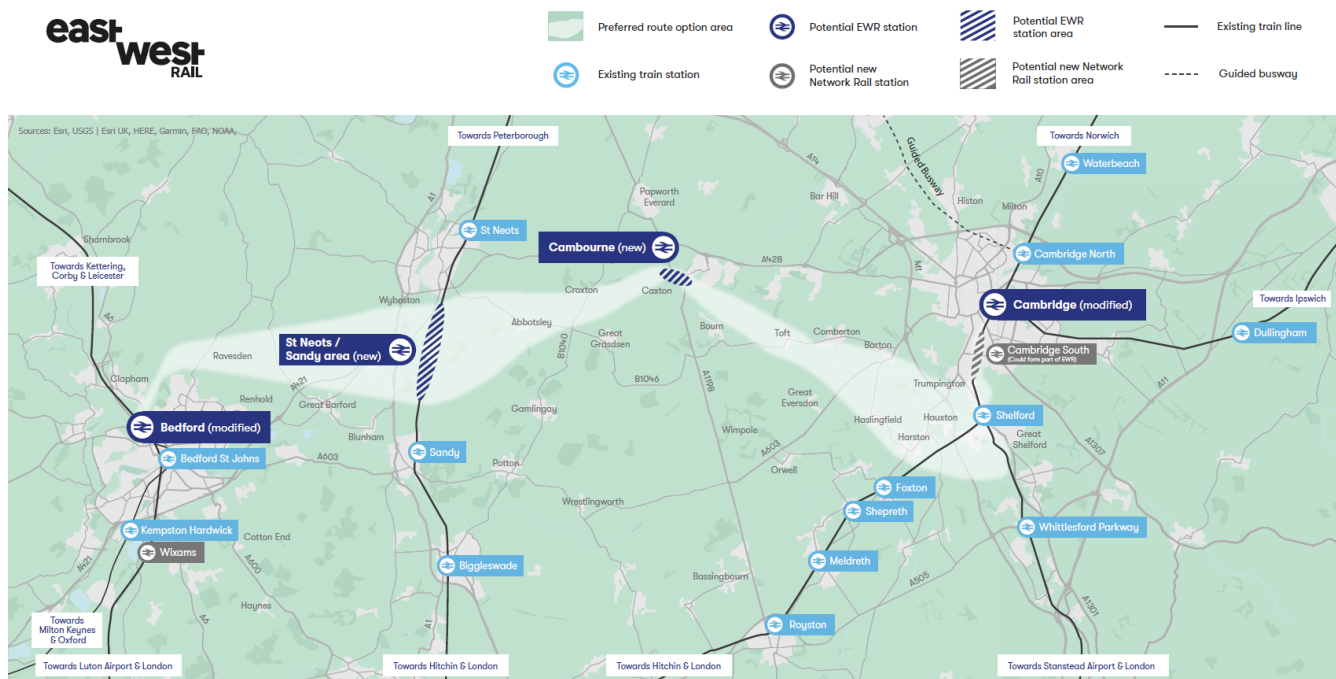
Bedford Borough Council responded to the Issues and Options for the next Local Plan and call for building sites. The group have replied to the Borough Local Plan 2040 consultation. The assessment for the sites has been published and has appointed a Traffic Consultant to consider traffic issues.

Impact of East West Rail route

Gerry Sansom gave the group a very comprehensive survey of the impact that the route of the East West Rail that was proposed to go north of Bedford. He explained the possible impact that it would have not only on our village but the surrounding villages north of Bedford. He said that some parishes had joined together to challenge the EWR route and Cllr Olney would ask the Parish Council if they might consider joining the group. Below is a map detailing the East West Rail route, showing the development that could possibly go forward if the railway was to go on this route. You can make your views known at eastwestrail.co.uk.

The Group has replied to The Government Planning for the Future Consultation. Mr Leinster commented that Bedford Borough Council was only likely to choose one large site and a development at Twinwood would only provide benefit if a new station is built there. A station was not included in the EWR plans but Bedford had not ruled one out if developers were prepared to fund one.

Mr. Leinster noted that there were discussions about Bedford becoming a Development Corporation. This would mean different planning rules. Major new development could be determined by the Planning Inspectorate, in which case measures on net biodiversity gain in the upcoming Environment Bill would not apply.



Great Ouse Valley – impact on Biodiversity and the Landscape

The group were concerned that there was no landscape classification for the River Great Ouse. Cllr Sansom noted that the classification of "Area of Great Landscape Value" was removed about five years ago. Bedford Borough Council was revisiting the Oakley Great Ouse Landscape Character.

Cllr Leinster explained that he was making enquiries about Landscape classification and the Great Ouse Valley with the Bedford Ouse Catchment Partnership. He would enquire how the Environment Bills Local Nature Recovery Strategies and Networks could assist. He was also discussing land character assessments with Bedford Borough Council. The Bedford Partnership includes Anglian Water, the Environment Agency, NFU, CLA, BRCC, Greensand Trust and the Marston Vale Trust. He was not clear how an area like Bedfordshire, which includes Bedford Borough, Central Beds and Luton, would work together as the Local Nature Recovery Networks would normally be based on County or Metropolitan areas. Cllr Sansom noted that new protection was needed to be established. This would reduce the risk for large scale Development. Cllr Olney would pursue greater protection with Bedford Borough Council. She would also make enquiries about the Central Growth Board.

From Snacks to Meals!

Cakes to die for
Best coffee in the neighbourhood
Milkshakes, tea, soft drinks
Open SEVEN Days!
Friendly staff, good service



for Coffee

Oakley's Coffee Shop!

Phone 824113- info@o-for-coffee.co.uk
<http://www.o-for-coffee.co.uk>
Oakley Park (Unit 1), Station Road, Oakley!



Tudor Rose Patchwork

Oakley's Sewing and Threadcraft Shop

Phone 824983 - info@tudorrosepatchwork.co.uk
<http://www.tudorrosepatchwork.co.uk>
Oakley Park (Unit 1), Station Road, Oakley!

We're friendly and very helpful!
We run all kinds of workshops and clubs!
We have a great selection of knitting yarns
We have a huge range of cotton fabrics
as well as other types of fabric

01234 348179

7 The Arcade, Bedford MK40 1NS
www.pumpnickel-online.co.uk

pumpnickel HEALTH

one stop shop for all your health and fitness needs!

We probably stock the largest selection of:

Organic Nuts & Seeds, Dried Fruit, Honey & Herbal Teas

Vitamins & Supplements & Herbal Remedies

Sports nutritional Products

Healthy Snacks

Aloe Vera Products

Gluten free/Dairy Free/Sugar Free food

Aromatherapy oils & Eco Friendly Cosmetics

& Toiletries and much more...

At very Competitive prices

Many of Popular Products are 50% off Retail Price



viridian

... and many more

Home
Delivery
Service

20 YEARS EXPERIENCE

established over 30 years ago, we have
HIGHLY QUALIFIED STAFF who can
give you **HELP AND ADVICE** on all
matters of complementary health

**HIGH QUALITY PRODUCTS,
SOUND ADVICE AT A GREAT PRICE**



ALOE VERA
JUICE

only £2.99

COD LIVER
OIL HIGH STRENGTH

only £1.99

**Mail Order now
available please
contact us:**

How to shop online safely this Christmas

As if 2020 hasn't been an unusual enough year, many of us are now thinking about Christmas. With the pandemic still very much with us, it's anybody's guess what the festive season will bring ... not least when it comes to getting together, going away and how we celebrate.

Two things are certain before and over Christmas.

Most of us will be buying presents and other seasonal goods online, more than ever before. And it will still be a favourite time of year for scammers, who always regard Christmas and Black Friday shoppers as perfect targets for fraud.

We always have a lot on our minds at this time of year, but right now we have the added consideration of our own and loved ones' health and well-being, as well as possible work and money uncertainties. And a host of other distractions brought about by the current situation.

That's why it's especially important to safeguard yourself, your family and finances when you're online.



We've come up with these *expert, easy-to-follow safety tips* to help protect you from falling victim to seasonal scams.

- When you're shopping online, **make sure websites are authentic** by carefully checking the address is spelled correctly. Ideally, type it in rather than clicking on a link in an email, text or post. It's easy for scammers to set up fake websites that are very similar to the real thing.
- When you're paying, **make sure the page is secure** by checking that addresses begin with 'https' ('s' is for secure) and there's a closed padlock in the address bar. An additional word of warning: this means that the page is secure, but the site could still be operated by fraudsters.
- Many advertisements for items such as gifts, holidays and events on **social media and online forums** are genuine, but be aware that others are fraudulent. Be extra vigilant about checking that such ads are authentic.
- However desperate you are to buy that late gift or an item that's in short supply, **don't pay for anything by transferring money directly** to people or companies you don't know. If it's a fraud, it's doubtful the bank will be able to recover or refund your money. If you can, pay by credit card. The same goes for holidays, travel and tickets.
- **Log out of the web page or app** when payment is completed. Simply closing it may not log you out automatically.
- **Fake or counterfeit goods** are of inferior quality, contravene copyright law and affect the livelihoods of workers who make the real thing. They can also be dangerous to users. Don't buy them intentionally – however cheap or 'authentic' they – and do all you can to make sure what you're buying is authentic.
- **Avoid 'free' or 'low-cost' trials** – whether for the latest handset or slimming pills – without thoroughly reading the small print and trusted reviews. You could be signing up for large monthly direct debits which are very hard to cancel.
- If a winter holiday or short break is on the cards, **check that what you're booking online is genuine** by doing thorough research. Look for independent reviews, and make sure travel agents / tour operators are genuine by checking for an ABTA/ATOL number. Pay by credit card for extra protection.
- Christmas is a favourite time for scammers to send **fraudulent emails, texts or DMs, or post fraudulent offers on social media**. At this time of year, with the increase in internet shopping, fake parcel firm delivery notifications are commonplace attachments or links, as are emails and other messages featuring 'special offers' and 'prizes'. **Don't click on links** in emails, texts or posts that you're not expecting, and don't open unexpected email attachments.

For more information on buying safely online, visit www.getsafeonline.org



Oakley Sports & Social Club
Family & Sports Bar
<http://oakleyssc.com>

Mick & Barbara Hewitt

RETIRING BAR & KITCHEN STEWARDS



Mick and Barbara Hewitt are set to retire in January 2021 following over ten years of stewardship at Oakley Sports & Social Club.

However, their contribution to OSSC predates their start as stewards and have always gone above and beyond to ensure success for the Club, to the benefit of its members, the village and further-afield too.

Moving to the village in 1978, Mick & Barbara soon entwined themselves into the community. Mick ran a successful electrical company for many years, joining the OSSC Committee in 1996 and bringing with him his trade expertise to the fold. Barbara joined the OSSC Committee a couple of years later, bringing a strong desire to fundraise for the Club. From discos to raffles, Barbara was keen to raise money to help sustain the club during challenging times and raise money for a children's play area - which was subsequently procured and installed. And so this effort was the first steps for the Club to shake off a "working men's club" stigma and become recognised as a family focussed venue in addition to its sports facilities. This has echoed throughout the years with many local (and not so local) families enjoying the Club's facilities.

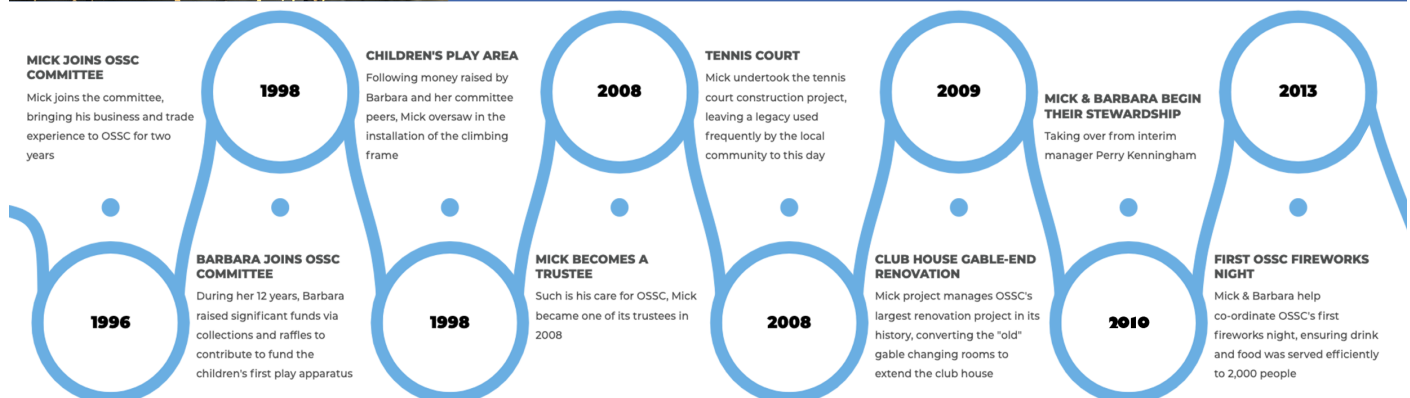
Off-the-back of Ray Button leaving OSSC as the Steward, finding the right candidate for the vacancy was challenging for the OSSC Committee. Perry Kenningham provided interim management to afford the then-Committee time to find a suitable replacement. At this juncture, Mick and Barbara Hewitt then successfully applied for the OSSC Stewardship in 2010, appointed by the Committee and then-Chair Andy Brown. Since that time, the Club has flourished. Mick & Barbara's personable characters behind the bar and kitchen has promoted both OSSC's sports and family values, bringing the Club much success over the last decade.

As you'll see from the timeline, Mick and Barbara have been instrumental in many activities, projects and events during their tenure as Stewards. In addition to those detailed events, they have supported and promoted services offered by Oakley Sports & Social Club to; bi-annual Oakley Carnivals, very busy Thursday Oakley Motorcycle Club summer evenings, supporting AFC Oakley by opening the kitchen to suit and even helped secure a 65 year lease of the grounds with Charles Wells.

The OSSC kitchen has come into its own following Barbara and daughter-in-law Julie's efforts. Before they took over, the kitchen was struggling to build up sustained custom. It now thrives, with many families looking forward to having a great value, enjoyable meal at OSSC.

Throughout their tenure, Mick and Barbara always put the club first. It has been clear to all that their Stewardship has been a labour of love. Frequently working above and beyond their remit for the benefit of the Club and its members - as you'll note from the timeline below. From odd-job repairs and maintenance, to large-scale project management, Mick and Barbara's commitment to Oakley Sports & Social is, and always has been, paramount for them. This has never been more evident when they delayed their much-looked-forward-to retirement plans in the summer 2020 and continue in their Steward positions to ensure that OSSC could operate seamlessly and serve the community during a once-in-a-century pandemic.

The Oakley Sports & Social Club Committee would like to publicly thank Mick and Barbara for everything they've done for the club during, and before, and almost certainly after, their Stewardship. This thanks extends to their family members who have all contributed to the club's success over the last ten years. Therefore we would like to thank to Julie, Tracy and Paul Hewitt for their work with the club also. It is from their family contributions to which OSSC owe a significant amount to its success over the last decade, they will be missed by our members and local community like and we wish them all the best in their well-earned retirement.



"Baysie", Roger Bays - Chair, Oakley Motorcycle Club

"I have known Mick and Barb since myself and my family moved into this village in April 1986 and was so pleased when they took on the Stewardship of Oakley Sports and Social Club, it was like a breath of fresh air.

I had started Oakley Motorcycle Club back in January 2005 mainly for two reasons, one being a personal interest in motorcycling, the other in an attempt to try and create some revenue for OSSC which at that time was struggling with it barely being worth opening the doors on Thursday evenings. Well within a year that quickly changed and when Mick and Barb took over coupled with the huge alterations there, then it started to go from strength to strength.

With Mick usually being pretty much unflappable during some very busy Thursday evenings and always maintaining his wit and sense of humour even with bikers he didn't know from Adam, coupled with Barb running the new kitchen partnered with Daughter in Law Julie and other members of their family turning out some great "pub grub" at great prices, it all proved a big hit with motorcyclists, hence one of the reasons OMC quickly moved from a membership of around 200 in 2009 to over 500 in 2019! We now see the kitchen turning out over 250 meals on some Thursday nights!

2019 was one of the busiest years in OMC history and the busiest Thursday evenings in the OSSC history, in no little part due to Mick, Barb and the team. They have always done their utmost to provide a warm friendly atmosphere on bike nights and have always gone the "extra mile" to ensure the nights would be successful. They will be sorely missed by all at OMC and will be a very tough act to follow.

Ps - When I said "usually unflappable" one thing that does annoy Mick is customers who tap coins or glasses on the bar or whistle to get his attention for service, so you can imagine one particular Friday early evening when I covertly supplied a number of customers with service desk bells for them to put on the bar and "ping" to get Mick's attention when they wanted a refill, it was something you would need to have been there to fully appreciate but the sight of Mick rushing across the bar, grabbing the offending service desk bell and launching it into the bin and 10 minutes later another one appears, was a sight to behold"



The Stewards are closely supported by their family, with particular thanks to daughter Tracy, son Paul and daughter-in-law Julie

Dave Boddington - Chair, AFC Oakley

"The Oakley Sports & Social Club is the literal and spiritual home of AFC Oakley and both the club and the wider community have been lucky to have Mick and Barb at the helm.

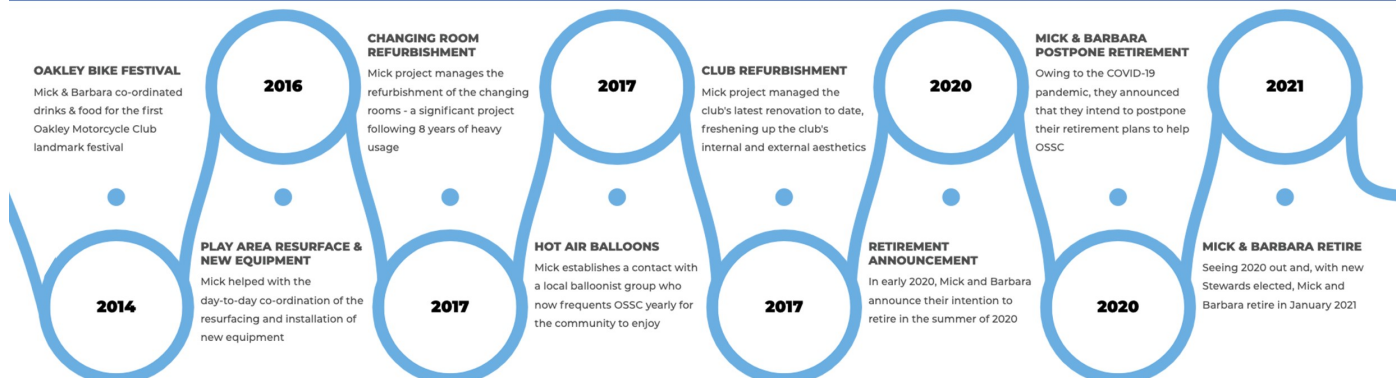
As the football club has grown, particularly in recent years, to now support over 400 players across 25 teams from under 6 to adults, the support of the club, and that of Mick and Barb has been essential in enabling that and in establishing us as one of the most highly regarded clubs in the County - one for which visiting teams know that they will benefit from both the excellent facilities and a very warm welcome (at least off the pitch).

From helping to prepare the pitches and changing rooms for a full Saturday of football, helping to organise midweek football sessions, and sorting the post-match food for the adult teams, the day-to-day effort they provide is invaluable. And in supporting our larger annual events such as our end of season, Christmas and Easter tournaments they enable us to bring as many the children and adults of our club together for the benefit of all."

Paul Moffat - Chair, Oakley Sports & Social Club

"Having worked alongside Mick & Barbara shortly after they took over as stewards of the OSSC I have been lucky to enjoy a long professional and personal relationship with them that has seen the club develop beyond expectation going from strength to strength both financially and with the facilities on offer to our membership through their hard work a dedication.

It is true to say that the stewards have always gone above and beyond their duties as stewards providing support, extra hours, maintenance, a passion, dedication and a love for the club that is immeasurable. This is reflected in our sales, the condition of the club inside and out that is second none, providing superb bar services and food provision over the many years as stewards. They have embedded in the club an atmosphere of fun, security and a fantastic place to socialise for all members, adults, children and families alike. The Committee and I would like to add our gratitude to Mick and Barbara for their service to the OSSC and surrounding community, as one chapter closes and another one opens for them we thank them for all their dedication & hard work in supporting the OSSC. We wish them health, happiness and well-earned rest in retirement, we look ahead to serving them socially and looking after them from the other side of bar in a manner they thoroughly deserve."



Oakley Pre-school News



Pre-school continues to be very busy with ten new starters due to join us in January 2021.

We said goodbye to Miss Young in November who had been with us for five years. She is going to broaden her knowledge of the Childcare sector by working with younger children at a local nursery. We wish her well in her new role.

We organised a Spooky Autumn Trail over the October half term break, which was well supported by local families decorating their houses and displaying a letter and local businesses providing prizes. We would like to thank Merri Christmas Trees in Oakley, who have again included us in their charity Christmas tree sales, where you can tag a tree and nominate Oakley Pre-school to receive £5. Please do support them and think of us, if you are thinking of having a real tree this year.

We are a management committee run pre-school charity and are supported by our Chair, trustees and committee members. We require a certain number of members to operate and the committee changes on a yearly basis, as old families leave us and new families join the pre-school community. As well as fundraising events our



committee supports us with the running of the pre-school. This year **we have really struggled to appoint a Chair and new members**, so we are asking the local community if there is anyone who is interested in getting involved and volunteering for a local charity. Please contact us on the email or telephone number below and we can let you know what the roles entail.

Admissions

If you would like to register your child for a place at pre-school, please contact us on 01234 826452 or by email: info@oakleypreschool.com Our website is: www.oakleypreschool.com

Follow us on Facebook to keep up with our latest news and events.

For information on funding you can contact the Family Information Service 0800 023 2057

Sally Martiello

Snippet No. 48

Did you know?

You can bake bread in a slow-cooker: use a normal, or your favourite, recipe but put the dough into an electric slow-cooker lined with baking-parchment, for its final prove and bake.

The final prove occurs as the appliance warms up, so this can save proving-time and (possibly) fuel cost. You should allow a baking time of 2 hours and not allow condensation to fall onto the top of the loaf. I place a kitchen-towel under the lid or, if the loaf has risen so much that it touches the towel, remove and dry the inside of the lid periodically.

The loaf will need finishing in an oven at Gas 6 or 200C for about 20 minutes or until it sounds hollow when tapped firmly with a finger.

I have tried this with both yeasted and sourdough breads and the results were very good. In fact, I think they are my best loaves yet, both large (nearly filling the slow-cooker) and having a perfect interior structure.

Steve Nicholas



Sales, Lettings & Auctions



MAYFAIR
OFFICE GROUP

move
withUS



Your Local Property Experts with Regional & National coverage. Successfully selling homes since 1985... talk to us.



Andrew Williams



Nick Kier



Ross Douglas

01234 327744 | sales@laneandholmes.co.uk

Oakley

Allotments

Autumn has arrived and the intensity of summer's work on the allotment relaxes into an acceptance of the shortening days and deteriorating weather. The need to harvest reduces dramatically and watering is (certainly) no longer required: there is a sudden lull as regular work on the allotment is no longer essential and plans can be made to prepare for next year.

Next year seems such a long way away at the moment, but we have already sown broad beans and planted garlic bulbs. Kale, sprouting broccoli and cabbages are growing and we still have leeks to dig, although the leek-moth may have already started sampling them. So far this year the voles have not returned and our chard might still survive the winter – we will have to wait and see.

This year's sweetcorn, courgette and squash plants have been cleared and composted – their produce has been enjoyed through the season and also preserved or stored, where possible, to enjoy through the coming months. Cleared ground is lightly dug over, cleared of weeds (excavated for deep bindweed roots if necessary!) and treated with soil conditioner and fertilisers. We do not generally use fertilisers on ground where we plan to plant next season's root crops.

This autumn has been mild and wet. Unusually, we have just picked the last few runner beans; they had a late start this year for us, but they have produced beans for an extended period. Frost will usually determine the end of the runner beans' season but, so far, the frosts have been few and light. Because of this, we will cut the vines down and see if the roots will overwinter and regrow next year – this is a tip suggested by a member of one of the allotment groups on social media. If it works we will need to protect any early growth from frost next year.

There is more to enjoy on the allotment than just the exercise and fresh vegetables: as we were weeding in the summer we were visited by a recently fledged robin - it was still very grey and just beginning to show red breast feathers developing. It was apparently claiming this area as its territory and would fly to the trees nearby to sing for a few bars before returning to inspect the newly-disturbed ground for food.

The robin returns regularly and is now in adult plumage; bright and feisty in character, it is so brave that I am sure it could be persuaded to fly to a hand that offered food as it almost perches on your boots as you work. It is an absolute delight and now feels like a part of our team! I have included a recent picture of Robin, as we call him, where he looks perfectly round in shape.



year conditions have suited it better and the fruits are much fuller and very edible.

We have a waiting-list of five at the moment but please contact me if you would like an allotment in the future. Priority will be given to Oakley residents now that there is considerable demand for allotments.

Steve Nicholas





Amigo



A planning meeting is being arranged for December to try and put together a programme for the new year.



I am hopeful that it may be possible to present some Zoom meetings with a guest speaker.

Consideration will also be given to a Coach outing, which might be possible for the Summer of 2021, say June or July. I have spoken with our Guide, Charlie de Wet, who is of the view that it might not be possible to make any arrangements before Easter 2021. Assuming that conditions improve allowing for such a trip to be made, the following arrangements are proposed. The costings have yet to be made.

Leave Oakley Village Hall at 8.00 a.m. Arrive at the crypt of St. Martins in the Fields between 10.15 and 10.30 a.m. for tea and coffee and the use of the facilities. Charlie will meet us there and will then take us on a guided walk arriving at Temple Church by 12 noon. After a guided tour of the Church the group will walk to the Punch Tavern for lunch, Between 2.15 and 2.30 p.m. we will leave the Punch Tavern and walk to Dr Johnson's House where we will have a conducted tour. After the tour, which will last for about one hour, we will walk to "The Old Cheshire Cheese" for refreshments.. We will then walk up Fleet Street, past the Royal Courts of Justice to arrive in the Strand opposite St. Clement Danes Church to board the coach for the return trip to Oakley. leaving London at about 4.30 p.m.



Let us hope that it will not be too long before arrangements can be made. In the meantime, please consider what I have proposed. As soon as I am able to make any further progress, I will let you know.

John Dixon



Oakley.IT

maintain . IT
repair . IT
train . IT



Jan Rymarz – Principal IT Technician / Trainer

Fast PC and Laptop Repairs

Clear and Friendly Training

Fast and Efficient Service

Years of experience and services covering everything!

A few recent customer comments

"Great service"

"Trustworthy & reliable"

"Efficient & Affordable"

"Highly recommended"



100% Satisfaction
Regular Feedback
Online

07401 250 118

help@oakleyit.co.uk | www.oakleyit.co.uk



We'll meet again...

The bells of St Mary's have started to ring again, albeit only one bell each time, but it is a start. You may have heard one bell ringing on the occasional Sunday morning and the treble bell (the lightest bell) was rung for a wedding ceremony before the recent lockdown came into force.



A member of the Oakley Village Facebook page recently posted some video clips of the bells in full swing and it was a lovely reminder of how they sound all together.

It is sad to be up the bell tower on one's own, remembering the wonderful social aspect of being a member of the Oakley Band of Bell Ringers. Christmas is usually a busy time for us. But slowly the situation will improve and we will once again find ourselves enjoying a good ringing practise on a Friday night.

By Shelley Abbott, on behalf of the Oakley Band of Bell Ringers



Brownies

OAKLEY

With Covid 19 restrictions still in place the Brownies have not yet been able to return to our usual weekly meetings at the Scout Hut but, in true Brownies style, we have been making the most of the situation with weekly Zoom meetings to keep the girls connected and having fun. A hot topic at the moment is the environment and recycling, and with the Oakley bottle bank being removed the girls have been busy making posters which we will be sending to the Mayor in the next few days. We will

also be keeping busy over the next few weeks by making lava lamps, rocky road treats, quizzing and playing lots of games.

We are really proud of how the children are dealing with the changes brought about by the pandemic and thought who better to share their thoughts than the Brownies themselves!

"In the virtual Brownies meetings, I have enjoyed making the cool crafts and posters, playing the fun games and seeing all my friends. The meetings I enjoyed the most were the one based on emojis, the meeting where we made mug cakes and making armpit fudge! I cannot wait to meet back in person but until then Zoom is the next best thing". Ellen, aged 10



"I think the Brownie zoom meetings are going very well. Our leaders always think of fun things to do and are very creative. I do miss face-to-face meetings, but I'm getting on quite well with the online meetings and I know it's the safest thing at the moment. My highlights of the zoom calls are, making bookmarks with dried flowers, dancing in the 'Brownies got talent' show, making a chocolate mug cake and doing an emoji game! I am looking forward to meeting with everyone properly again soon". Elodie, aged 9

"I am really enjoying Brownies, even though we are doing it over Zoom because of the current restrictions. We are having lots of fun making things and playing games and it's really good to see my friends too" Anna, aged 9

Melissa Willars



Oakley Village Hall

Church Lane,
Oakley,
Bedfordshire, MK43 7RJ

A well-appointed village hall
Main hall with stage and PA system
(Main hall is air conditioned)

Separate meeting room with bar

Well equipped kitchen

For information and bookings
please telephone 07788 796996



INTERIOR ♦ EXTERIOR ♦ DOMESTIC ♦ COMMERCIAL

Professional & Reliable Local Decorators

SPECIALISTS IN WALLPAPER HANGING

DUSTLESS SANDING

AIRLESS SPRAYING


EXTENSIVE PORTFOLIO
TESTIMONIALS FROM CLIENTS AVAILABLE

TEL: 01234 824173

MOB: 07743 176201


EMAIL: info@oakhamdecorators.co.uk

WEBSITE: www.oakhamdecorators.co.uk




BADMINTON

Get fit whilst socialising at
Oakley badminton club ☺




WEDNESDAY NIGHT

7:30-9PM



LINCROFT SCHOOL



For further details call Alyn Walker –
01234 824530 or 07557 441206

NIGEL L. WILLE

PLUMBING & HEATING ENGINEER

GAS SAFE REGISTERED

BOILER REPLACEMENTS
FULL CENTRAL HEATING INSTALLATION

BATHROOM SUITES
RADIATOR REPLACEMENTS
TAP REPLACEMENTS

ALL DOMESTIC PLUMBING, HEATING WORK
AND REPAIRS UNDERTAKEN

FOR A FRIENDLY SERVICE
PLEASE CALL NIGEL

Tel: 01234 822962

Mobile: 07778 800595

Email: nigel.wille@sky.com



Oakley Rural Day Centre

Oakley Rural, The Old School, Lovell Road, Oakley, Beds, MK43 7RX

Tel: 01234 824935 Mobile: 07733 227374

Email: oakleyruraldaycentre@yahoo.com

Web: www.oakleyruraldaycentre.weebly.com

Registered Charity No: 1060283



NEWSLETTER Winter

Welcome to our latest Newsletter. If anyone has access to the internet please visit our website, www.oakleyruraldaycentre.weebly.com The site is updated regularly with the latest news from the centre.

We also have a [Facebook](https://www.facebook.com/oakleyruraldaycentre) page for anyone who has a [Facebook](https://www.facebook.com/oakleyruraldaycentre) account. This will be updated with the latest news and photographs of events at the centre. The [Facebook](https://www.facebook.com/oakleyruraldaycentre) page can be found at www.facebook.com/oakleyruraldaycentre We are also producing articles in various publications throughout Bedford and surrounding areas to raise the profile of the centre.

MESSAGE FROM THE DAY CENTRE

Due to the ongoing Covid 19 situation the day centre remains closed at this point.

We are putting together the procedures that we will need to have in place before reopening. We are hoping that this will be in early spring. It is important that we have those procedures in place for our vulnerable people.

Staff continue to contact our clients by phone and making sure that they have lots quizzes, word searches, crosswords, funny stories, interesting facts and recipes to try out plus the jokes which enable them to smile and on occasions laugh out loud.



We all look forward to the day when we can welcome back our clients in a safe manner. From all trustees, staff and volunteers we wish you all a very merry Christmas and a happy new year and let's hope 2021 is a better year for everyone!

NEW WEBSITE AND EMAIL ADDRESS

During the lockdown we have created a new website. The website address is www.oakleyruraldaycentre.weebly.com We also have a new email address which is oakleyruraldaycentre@yahoo.com

WHAT WE OFFER

We normally provide a day centre for elderly residents from Bedford and surrounding villages to meet, socialise and partake in various activities such as crafts, quizzes, chair based exercise and at times provide entertainment such as singers and choirs. We also provide tea/coffee and a 2 course freshly cooked lunch.

For details of costs and advice please contact Lynne on 07733 227374.
Enquiries welcome from Bedford and surrounding villages in North Bedfordshire.

David Swallow

R J GASCOYNE

THE PLUMBING, HEATING AND GAS COMPANY

Boiler changes, system upgrades, bathrooms, fault finding, servicing, maintenance, gas safety & landlord certificates, repairs, all heating, plumbing, drainage and gas work undertaken.

All from a friendly, reliable, trustworthy and professional engineer.

Contact Ryan on

TEL: 07980 209587

or EMAIL: ryangascoynephg@gmail.com



Uncomfortable with letting strange people into your home?

We are an **all-female** team of interior painters and decorators, working in the north beds village area. Fully experienced in hanging wallpaper, painting – including paint effects, restoring and repairing surfaces, wallpaper stripping and all general home decorating. We are all individually CRB checked, will provide references and testimonials showing the standard of our workmanship giving you peace of mind. We will come to your home to discuss your exact requirement, offer advice and produce a free written specification and quotation. We will then arrive on time, keeping disturbance to the minimum and deliver a quality job using only top quality materials.



OAKLEY ANGELS

The all-female painting and decorating team

- Trustworthy
- Experienced
- Guaranteed work
- Peace of mind
- High quality work at a reasonable price

Phone: 07989 778345

or: 01234 822499

Continuing : Oakley – Back Through Time - 1930's

The Village Post Office was run from a little cottage by Mrs. Clewer. Her father was the village Postman and he wore a box type cap. They also sold sweets and in those days you could buy so many for a farthing. Mrs. Paine used to sell sweets from the front room of her cottage in Station Road. These were the only shops in the village. Mr. Rufford, the blacksmith, came from Stevington twice a week to the forge, which was on the corner of the High Street and Church Lane. The furnace was worked by hand bellows. Cecil loved to help, holding the horses while they were being shod. He learnt a lot about farm machinery too as Mr. Rufford always had many to repair.



Roof of Forge



The Dovecot at Middle Farm had a pond from which he caught newts every year. These were kept in a bucket in the kitchen until they hopped over the top, much to his mother's dismay.

One of his favourite haunts was a tree house in an Ash tree by the Post office. The tree no longer exists. Trees planted in Oakley in the early 20s all had their uses. Beechwood was for furniture, Walnut had many uses – the nuts for eating, for Christmas Fare in a pickled from and the wood was used for gun stock barrels. Ash was used for poles and hurdles for the farm, Hazel for thatching

spikes, Oak for beams and furniture, Willow trees for shade to protect the cattle from the flies and the wood for cricket bats. Poplar trees were very good as wind breakers for the animals to shield them from the cold winds. Pine wood was easily cut and quick growing and was also used for furniture.

The Fox Covert down Westfield Road was used by the Duke to raise his Pheasants. This covert had a well and thus water was readily available. The story goes that there were cottages in Westfields that were pulled down by the Duke because his tenants were not sufficiently respectful.

Mr Pettit, a builder's labourer, lived with Cecil and his family during the week while the council houses were built in Church Lane. He went home at weekends as he lived in Pertenhall, it was long way to cycle each day. Marriott from Rushden was the builder.

A bicycle was an essential mode of transport socially and for work. It gave access to the surrounding villages and to Bedford. In the late 30s the Birch Bus came to Oakley and that meant you could venture further afield. Cecil spent Saturdays roller skating in Shefford. The last bus would drop them off at Milton Hill late at night, leaving him and his mates to walk one and a half miles to Oakley.



There used to be a courier bus at the weekend and on Wednesday this went from Milton Hill around the villages to Upper Dean returning late at night. Franklin's buses of Carlton was a private bus company which also served Oakley for passengers and parcels. It only cost 2 pence to go from Carlton to Bedford.

Transcribed by a resident in the Lovell Homes from Cecil's account.

Pat Olney by permission.

Oakley Toddlers Group



Come and join us every Monday 9.30 - 11.00am term time only in the Village Hall.

We are a friendly local community run group that has been going since the 1970's. We aim to offer a place for mums, dads, babies, toddlers and carers to socialise together and help start some of the building blocks towards our little ones development.

Your first visit is free then only £2.00 for your first child and £1 for each child thereafter.

Children must be supervised at all times (we do not offer childcare)

NAO Cattery

BOOK NOW!



07411 136691

naoservices111@gmail.com

www.naoservices111.weebly.com

Bramble Lodge, 29 Oakley Road, Clapham, Bedford MK41 6AN

**Opening Hours: 9.00-11.00 Mon-Sat & 18.00-19.00hrs Mon-Fri
Sunday and Bank Holidays Closed**

* Note that all boarding cats must be healthy on arrival and fully inoculated against cat flu and contagious enteritis. Terms and Conditions apply, charge includes insurance and vet on call.

NAO Cleaning

- Regular cleaning (Weekly, Fortnightly, Monthly etc)
- Home Care Cleans
- Spring cleans
- Moving In & out clean
- Builders before and after clean
- Tenancy beginning & end clean

**FOR A FREE ESTIMATE CALL TODAY ON
07411 136691**

Bramble Lodge, 29 Oakley Rd, Clapham, Bedfordshire MK41 6AN

www.naoservices111.weebly.com

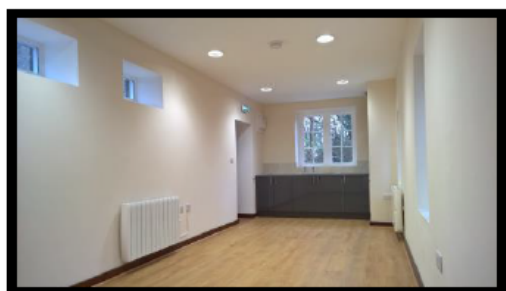
naoservices111@gmail.com

We cover all of Bedfordshire

HIRE THE OLD SCHOOL

Lovell Road, MK43 7RX,
Reg. Charity No. 1119074

- *Hall available for regular and one-off bookings at weekends*
- *Meeting Room available for regular and one-off bookings weekdays and weekends*
- *Meeting room now with self-contained facilities*



Please contact :

Bill Sellars 07980 745292

Email: billsellars@theoldschooloakley.org.uk

Web : www.theoldschooloakley.org.uk

RP TESTA

PLUMBING & HEATING SERVICES LIMITED

A professional service with over 25 years experience :

All general plumbing requirements
and full design & installation for:

- ◆ CENTRAL HEATING inc. LPG
- ◆ BATHROOMS inc. tiling etc.
- ◆ UNDERFLOOR HEATING
- ◆ UNVENTED HOT WATER



FOR A LOCAL AND RELIABLE SERVICE CALL

T: 01234 781827

www.testaplumbingandheating.co.uk



Hi all,

Just a quick update from Oakley Youth Club as we do not have much to report as we have only opened a couple of weeks since the lockdown was lifted. We hope to open again on the 4th of December and spread some fun, joy, and happiness to our members, especially as Christmas will be round the corner!

I work in a school and have seen how this lockdown has effected some children, I am also a mother of teens and it is really frustrating for them not to be able to go out with their friends. I know my two are really missing going with their friends to the cinema and McDonalds! So far our members have been amazing and it is so nice to see them enjoying themselves. We do have rules around COVID-19 and they are in year bubbles like school. The children are so used to it now that opening youth club has been so much easier than I thought, therefore I would also like to take this opportunity to thank the parents/carers for supporting us too.

I cannot wait to open our little youth club again; we have really missed being there and seeing our members have fun with their friends.

In the meantime, I want to let you know we do have a Facebook page for parents (members only) so I can keep you informed of what is happening and we also have a website which I will update more often. I am also considering starting an online platform for our members via parent's consent, so I can post competitions, things to do and keep our members up to date.

When the lockdown is lifted on the 2nd December we hope to continue with our year 7 and 8 pupils but we would also be interested in finding out if any year 9's and 10's would like to attend so we can make plans. Therefore if you have a year 7, 8, 9 or 10 son or daughter and they are interested in coming along then please message me.

Our email address is: info@oakleyyouthclub.co.uk

Our website address is: <https://oakleyyouthclub.co.uk/>

Our Facebook (parents/carers) address is: <https://www.facebook.com/groups/102155776979121>

For now, we wish you all a wonderful Christmas and let us hope we all have a great NEW YEAR! (as we are so over this one!)

All the best

Dawn, Emma, Naomi, Pat and Sara

Gerald Dickens

*The Great, great grandson of Charles Dickens
in his internationally acclaimed, one man production of*



A Christmas Carol

Sharnbrook Mill Theatre

12th December at 3pm & 7.30pm

Tickets at £17.50 available online from

www.sharnbrookmilltheatre.co.uk

COVID-19 safety information is available on our website



A DICKENS OF A CHRISTMAS - A BAH HUMBUG OF A SHOW!

Saturday 12th December; (2.15 for) 3pm and (6.45 for) 7.30pm

'God bless us, everyone!' Sharnbrook Mill Theatre is opening its doors again...

GERALD DICKENS, the great, great, grandson of Charles Dickens, will present two performances of his internationally acclaimed one-man show; his own adaptation of "A Christmas Carol", based on the classic novel, playing over 30 characters using vocal and physical talents to bring each scene vividly to life.

This will be the first performance the theatre has hosted since lockdown in March; the 3 scheduled Summer-Autumn shows, and all fundraising events having had to be cancelled. However, since the easing of restrictions in August, the final phase of the £300k Warm-Up/Cool-Down Appeal project has been completed by the installation of air-conditioning in the Auditorium. This special show is in aid of the remaining £20k of the £70k cost of this installation.

The theatre's volunteers have spent many days over this period making sure the building is COVID-secure. Also refurbishing and redecorating the Auditorium and the bar. Special protocols including mask-wearing, temperature-checks on arrival, social-distancing, one-way systems and table service, will be applied.

Tickets (limited) £17.50 each (+£1 booking fee per transaction), including mulled wine/non-alcoholic punch & a mince pie, **are being sold in pairs on-line via our website (please see above); or in groups of 3 or 4 via email: sattl@hotmail.co.uk**

(NB: In the event of cancellation owing to Government restrictions, tickets will be reimbursed).





Pa\$\$WorD protection

1. Create a separate password for your email account

Your personal **email account** contains lots of **important information** about you and is the **gateway to all your other online accounts**, including banking, social media and online shopping.

If your email account is hacked all your other passwords can be reset, so use a strong password that is **different** to all your others.

2. Use 3 random words

Weak passwords can be hacked in seconds. Three random words is the recommended way of generating passwords, as it is easier to remember and takes trillions of years for a computer algorithm to crack.

Start with your most important accounts (such as email, then banking and social media) and replace your old passwords with new ones.

The Police Digital Security Centre (PDSC) recommend looking around the room and picking three things you see, for example table, computer, map would become tablecomputermap – DO NOT use words that are associated with you for example animal names or surnames, as these are easy to identify if you are someone who uses social media.

3. Turn on two-factor authentication (2FA)

Two-factor authentication (2FA) is a free security feature that gives you an extra layer of protection online and stops cyber criminals getting into your accounts - even if they have your password.

2FA reduces the risk of being hacked by asking you to provide a second factor of information, such as getting a text or code when you log in, to check you are who you say you are.

Check if the online services and apps you use offer 2FA – it's also called two-step verification or multi-factor authentication. If they do, turn it on. Start with the accounts you care most about, such as your email and social media.

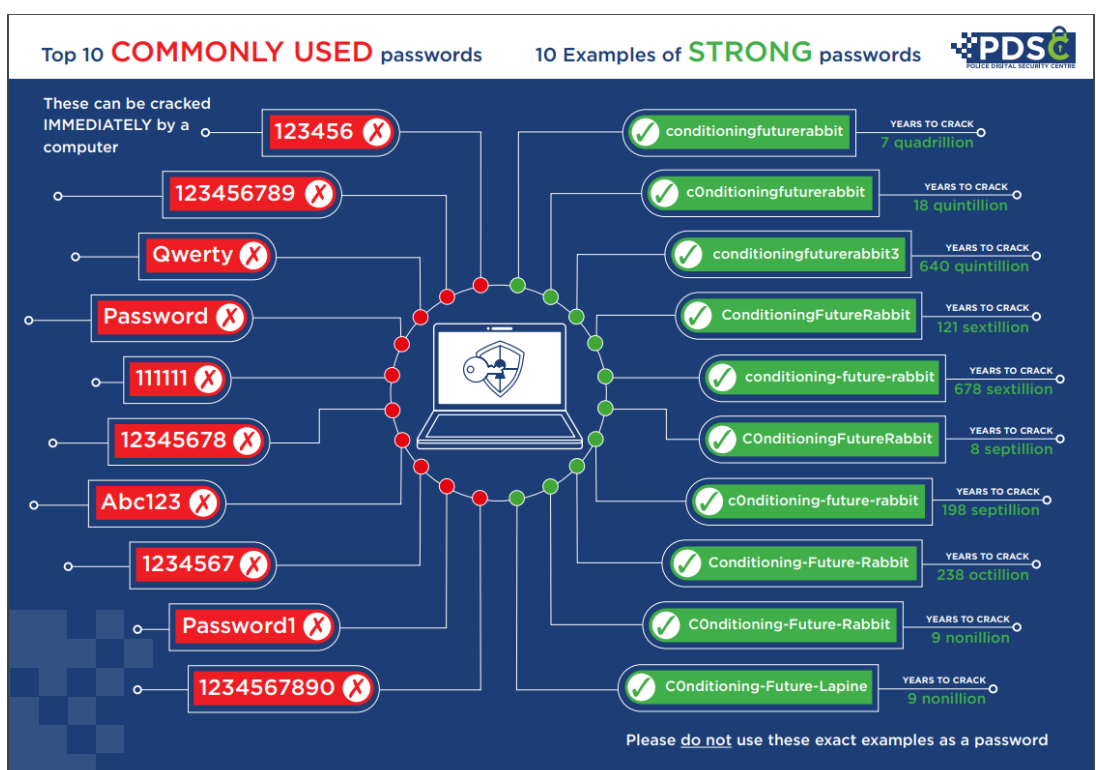
PROTECT YOUR Pa\$\$WorD IN 3 EASY STEPS

1.
CREATE A SEPARATE PASSWORD
FOR YOUR EMAIL ACCOUNT

2.
USE 3 RANDOM WORDS

3.
TURN ON TWO-FACTOR
AUTHENTICATION (2FA)

NOW SHARE THESE 3 STEPS
WITH 3 FRIENDS





OAKLEY WI

We are still unable to meet but are continuing with our Zoom Meetings which have been very interesting. Our Winter meetings are.

12 JANUARY

Paul Nicholson with a presentation on 'Queen's Park Claim to Fame'.

9 FEBRUARY

Anne Thomas with a delightful talk on Ronald Dahl.

14 APRIL

Martin Smith gives us a look into Daily Life in Tudor Times.

Zoom afternoon tea meetings are to take place every Wednesday.

The knit and natter group will resume when they are able. The poppies they, and several other members, produced for displays around the village were much appreciated.

If anyone has any queries please do contact us on 822087 or 825688.

Snippet No. 49

The English language is used around the world and it is no surprise that different usage can be, shall we say, interesting...

In the USA there is as much enthusiasm for gardening and growing your own fruit and vegetables as here in the UK. There are differences however. To quote an American source:-

"In the USA we eat what we grow in our community gardens, and what we cannot eat, we can."

(Americans "can" their surplus produce, even if they put it in glass jars, whereas, we will "bottle" or "preserve" it.)

Steve Nicholas



OAKLEY GARDENING CLUB

Dear members unfortunately the
booked meetings have
been cancelled.

Please keep an eye
on the notice boards for information.

For further information contact

Denise Hookham on 01933 312119

FIT for LIFE

PILATES

Beginners/Improvers

Oakley Village Hall

Mondays 11.30 – 12.30

With Nola

**Certified Stott Pilates Instructor,
P.E.A., R.S.A.**

£4.50 per class

**For more information on
Classes / Private Tuition**

call Nola on 07793 056122

FIRST CLASS FREE!

oakley *Motorcycle* club

Well, not a lot to say since the last magazine. OMC continues to hold a monthly COVID 19 sub committee meeting but currently there is very little light at the end of the tunnel. Just to have something to look forward to we are beginning to plan our popular dealer themed, American and Bike of the Year evenings for the Spring and Summer. Whether we will be in a position to go ahead with them is another matter but it will be easier to cancel them than arrange them at short notice, so fingers crossed!

On a happier note, OMC has a deal with Silverstone for discounted Bike Race tickets and had purchased numerous for members earlier this year for the Easter weekend British Superbike races. Unfortunately this event ended up being cancelled and our members refunded with their £10 ticket costs. However, thanks to the generosity of 53 members, they donated their refund to the East Anglian Air Ambulance amounting to £530. Coupled with the auction we held at the AGM in February auctioning off a few collectables, donated by Ex Team Suzuki Racer Steve Parrish and villager Pete Neal of Redwing Media who work alongside Honda Racing, we raised another £245. The total raised by OMC for the EAAA so far in 2020 amounts to £775.

Well known bike racers who have attended OMC in recent years



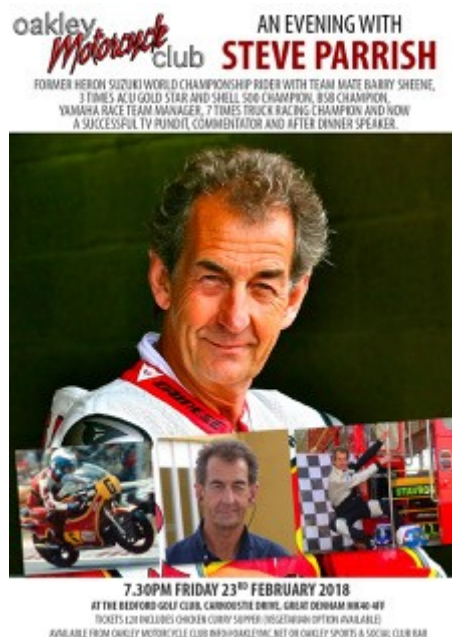
Twice World Champion Freddie Spencer (USA)



Twice World Superbike Champion Troy Corsa (AUS) (right) and Twice Isle of Man TT winner Steve Plater (left).



Three Times British Superbike Champion
Niall MacKenzie



World Championship Heron Suzuki Rider,
team mate of Barry Sheen and
British Superbike Champion
Steve Parrish

Baysie - Roger Bays - Chair OMC

W&H PEACOCK AUCTIONEERS & VALUERS



Auction Sales & Valuations

Valuation, collection and auction service of individual items through to complete property and commercial clearances.

Call for a free no obligation quote or email info@peacockauction.co.uk

SALE ENTRIES NOW INVITED
www.peacockauction.co.uk

Eastcotts Park,
Wallis Way,
Bedford, MK42 0PE

01234 266366



Café Update

2020 - An unusual year

For everyone, 2020 has been a very unusual year. Here at the Auction Centre Café we have always encouraged customers to enjoy the atmosphere of a real live auction while trying some of our homemade treats. However, with the onset of the Covid-19 pandemic we had to very quickly re-adjust, offering only a take away menu.

As a level of normality has returned we have been able to open our doors once again and invite you back to enjoy our locally sourced food, wide selection of homemade bakes, daily specials and hot drinks.

Unfortunately, we have not been able to host group functions and have missed the hubbub of the crowds but are looking forward to welcoming everyone back in the new year.

So a big thankyou to all our customers for their support during these unusual times.

the
café

AT

W&H PEACOCK
AUCTIONEERS & VALUERS



View the salerooms for our upcoming auctions and then relax with a coffee and a slice of cake.

Our unique café in Bedford Auction Centre with free wi-fi, air conditioning and views of the salerooms, comfortably seats over 100 customers.

10% OFF WITH THIS ADVERT

Mon-Thurs only T&C's apply Ref: Oakley

Visit www.peacockscfe.co.uk for further details and to view our current menu.

Open Monday to Thursday from 8.30am - 3.30pm
Extended opening on Friday to 7pm. Saturday 8.30am - 4pm
(Last orders 1 hour before closing)

Eastcotts Park, Wallis Way, Bedford, MK42 0PE

01234 266 366



Oakley Sports & Social Club

Family & Sports Bar

<http://oakleyssc.com>

Regular Events

Check our website and Facebook for forthcoming events

Full Bar and catering facilities

Food served on Thursdays, Fridays & Saturdays

Fun for families

Relaxing atmosphere, large field & play area

Sky & BT Sports

All major sporting events covered

Tel: 01234 824977 Website: www.oakleyssc.com
Facebook: [/oakley.ssc](https://www.facebook.com/oakley.ssc)