



Oakley Newsletter



Winter 2022

Number 93

Look inside for

Down Memory Lane

Oakley Youth Club

Kindergarten News

Oakley Bellringers

NHS Digital Services Survey

Oakley Show 2022

Speedwatch Report

Oakley Rural Daycare

Elderly Victim Fraud Alert



**Front Cover : David Exon
Winner of Oakley Show
Art Prize 2022**

The Oakley Newsletter

is published quarterly by Oakley Parish Council and delivered by parish councillors free to every house in Oakley – about 1,000 copies.

Opinions and information

in the Newsletter, both text and adverts, may not be endorsed by the Editor or the Parish Council.

Next issue

Final copy date for the Spring issue is 24th February 2023
The publishing date is 1st March 2023

Advertising rates

Colour Advertisements
Quarter page: £30
Half page: £60
Whole page: £120
Four consecutive quarter page adverts - discount 10%
Black & white advert rates are available upon request.
Loose inserts, any size up to A4: £100
Invoices will be issued by Ann Paice, with payment to Oakley Parish Council.

Editor

Bill Chalker
13 Bevery Close
Oakley
MK43 7SH
07789 997733
bill@chalker.eclipse.co.uk or
wrecklatch@gmail.com



Printers

White Hart Press
58a York Street
Bedford MK40 3RL



Hello Children

look out for
Ten more
little ones



Parish Council News

Winter 2022

Welcome to the winter edition of the Oakley Newsletter

The loss of HM the Queen in the autumn was a hugely significant event and meant many meetings were cancelled during the mourning period. However the parish council has still been busy as a consultee on a large number of planning applications and trying to maintain and improve our village environment.

Christmas lights

Once again, the Christmas lights switch on will take place at St Marys church car park at 5pm on Saturday 3rd December. Please join us for a lovely village event to mark the start of the Christmas period. Following the lights switch on there will be carol singing in the church where you will be able to see the hand made wreaths, provided by local organisations. Refreshments will be served by the church volunteers. This is an annual event on the first Saturday in December so if you are reading this newsletter after 3rd, please add it to your diary for next year and we will hope to see you then.

There will be lots of other events at the schools and churches in December. Please look out for the organisation's own newsletters/cards for more details.

Thank you to Village Volunteers

Thank you to the volunteers who have planted bulbs at the village signs. During the hot summer, it became obvious that we could not maintain the flowers and shrubs there because we had limited access to water. The bulb planting was suggested as an option and we look forward to seeing the colourful display in the spring.

Once again, the knitted poppies around the village for Remembrance Day, were spectacular. They brightened up the village in a very poignant way and made sure no one would forget the fallen. We had so many lovely positive comments about them.

Continued on page 3

**OAKLEY PARISH
COUNCIL**

PARISH CLERK

Ann Paice
31 Radwell Road
Milton Ernest
Bedford, MK44 1SH.
07873 887370
parishclerk@oakleyvillage.co.uk

ACTING CHAIR

Jane Walker
(Parish and Borough councillor) 11 Dewlands
07952 879587
jane@janewalker.co.uk

Jonathan Abbott

(Parish and Borough councillor)
13 The Furlong 950868
jonathan.abbott71@icloud.com

Pat Olney

33 Station Road. 824384
pat.olney@btopenworld.com

Sara Fardon

61 Lincroft. 824516
sarafardon@yahoo.co.uk

Michael Frampton

The Little House, The Drive
822181
michael_frampton@btinternet.com

Phyllis Jones

35 Ruffs Furze 910187
phylmaj@gmail.com

Stephen Nicholas

44, Grenidge Way 824345
sbnicholas@gmail.com

Robert Saunders

College Farm. 822328
rjsaunders5591@gmail.com

Paul White

20 Reynes Drive. 825472
paulwhite20rd@gmail.com

Vacancy

Vacancy

Thank you to the ladies of the Knit and Natter group for all of your hard work making the poppies, sewing them on to netting and then fixing them up around the village. You did an amazing job.

Lincroft School planning applications

Lincroft school have now submitted their planning application for a new dining hall with teaching space above and the parish council has supported this as a vital addition for the school. The school has also withdrawn their application for a MUGA behind the school. We wait to see if they will replace it with something else that would allow them to expand their hard standing area for break times.

As the school is now an academy, the Parish Council does not have representatives on the Board anymore, so we are only informed about planning applications at the same time as their neighbours. Please contact us if you receive any notice of planning changes that you are concerned about and we will follow it up with the Borough Council planning department.

Waste bins

One of our parish councillors diligently checks bins when she is walking her dog and will report them to her Borough Council contact if she finds they have been missed from a collection. However, when residents overfill the bins so that rubbish is left on the ground beside them, the council will not clear up the excess. This then leaves an unsightly mess which residents then have to clear up ourselves.

Please, if you do see that the bin you are planning to use is full, do not try and put your waste into the top and hope it will not fall out. We have a large number of bins around the village. It will not be too far to the next one. Or you could take it home and put it in your own bin. This is a regular, unpleasant job for the volunteers who monitor our bins. Please help us to help them.

Dog waste bins

Many of our dog waste bins have now been changed for general waste and dog waste combined. This is clearly marked on the side of the bins and they tend to be bigger than the small bins on posts. It is fine to put all waste into these larger bins.

However we do still have a number of small dog waste bins on posts. These must only be used for poo bags please. They are not big enough to take anything else and are collected by a dedicated van for this type of waste. Adding other rubbish fills them too quickly and is unpleasant for the person who empties them.

We are very pleased that the dog waste bins are so well used as it means people are picking up their dog's poo. We want to make sure that disposing of your bags is as easy as possible so the parish council has decided to swap the small bins by the bus stops at the High Street/Station Road cross road and Lovell Road, to make them into the larger, dual purpose bins. This will be paid for from next years budget.

Parish Council Vacancies

We currently have two vacancies on the Parish Council and we are looking for volunteers who would like to be more involved in the village. The current term ends next May so if you would like to join us until then it is a good opportunity to take part without committing to a long term of office. Obviously if you enjoy being part of the council, we hope you will consider standing for election next year in the council elections.

WHAT WE DO:



If you would like to find out more about what being a councillor involves, please speak to any of the councillors on the contact list in this newsletter or call the parish clerk and she can explain more. We meet once a month on the first Tuesday of the month, in the village hall. If you would like to see us in action, please come along to any meeting, as residents are always welcome to attend.

Jane Walker Acting Chair

Parish Clerk's Working Hours

The Parish Clerk is currently working from home Monday, Tuesday and Wednesday mornings. She is also in the Old School Meeting Room (at the rear of the building) on Thursdays between 10.00am and 2.00pm if anyone wishes to visit in person. She does not work on Fridays but any messages or emails will be picked up on Monday.

Borough Council News

Council Launch Cost of Living Grant Fund

A new grant funding scheme has been launched in Bedford Borough for voluntary organisations and community groups to help people struggling with the cost of living.

Bedford Borough Council is working with Compass Wellbeing and the Bedfordshire, Luton and Milton Keynes (BLMK) Health and Care Partnership to provide £170,000 of grants. These would be available to community, voluntary and social enterprise organisations, or town and parish councils, which are supporting individuals and families during the current cost of living crisis.

Grants of between £5,000 and £25,000 are available to organisations that are helping local residents to stay warm, well and socially connected this winter.

Examples include those that support people to access hot, healthy, nutritious meals in community settings, help with social isolation and loneliness and support for people to access healthcare.

Full more information on how to apply visit www.compasswellbeing.co.uk/latest-funding-opportunities. The deadline for applications is 18 December 2022.

More information about support for residents can also be found at www.bedford.gov.uk/costofliving

Fly-tippers continue to be identified and fined

The Council continues its crackdown on fly-tippers and locally will look to identify and fine people who leave waste by the bottle bank at Stevington Country Walk. This is particularly important to remember around Christmas, when the amount of glass to be recycled increases and people are tempted to leave these alongside full bottle banks.

Bedford Borough Council takes fly-tipping very seriously, not only does it make a mess but it is illegal. This year so far over 100 Fixed Penalty Notices have been issued to people caught fly-tipping. Enforcement teams work tirelessly to find and prosecute people who are carrying out unlawful activities. If anyone witnesses fly-tipping they can help the teams by reporting it at; <https://www.bedford.gov.uk/fly-tipping>.

These mini-recycling sites can only collect specific materials such as clothes and textiles, shoes, and glass. Discover where these sites are and what they collect at; www.bedford.gov.uk/MiniRecyclingSites. If you find a site is full or overflowing, it can be reported on the same page. If you have extra waste take it to the Household

Waste and Recycling Centre in Barkers Lane or arrange for a licensed waste carrier to collect it.

If you find a bottle bank full, please take your glass home with you and do not leave it for others to clear up.

Bedford Borough Council successfully joins Art Council England's Investment Programme

For the first time ever Bedford Borough Council has been successful in joining ACE's national portfolio of funded organisations (NPOs). The Higgins Bedford has received a conditional funding offer of £65k per year for three years from 2023-2026.

This funding will enable The Higgins Bedford to do more to realise the potential of its nationally significant collections and redeveloped facilities. It will be able to deliver even more opportunities for outstanding cultural experiences to local residents. Existing work will continue with a renewed focus on engaging with the diverse communities of Bedford Borough.

ACE is investing £446 million each year between 2023-26 in 990 organisations with creativity and culture at their heart. ACE are boosting spending in arts, museums and libraries in villages, towns and cities where investment is currently too low. Bedford is historically a place of low Arts Council investment.

This ACE portfolio focuses on making certain that people engage with the very best of art and culture on their high streets and in community spaces. The aim is to reach even more people, no matter where they come from or what their circumstances are.

Putnoe Walk-In Centre

Putnoe Walk-In Centre which has been under threat of closure will now remain open as the contract has been extended to 31st March 2024.

The Walk-In Centre is open 365 days a year: 8:00am to 2:00pm, Monday to Friday; and 8:00am to 5:00pm on weekends and bank holidays. It is open to anyone who needs urgent medical care for minor illness or injuries and means residents can avoid having to visit Bedford Hospital.

More information including opening hours can be found here - <https://www.putnoemedicalcentre.co.uk/practice-information/opening-hours/>.

Councillor Jon Abbott

Telephone: 07784 549180

Email : jonathan.abbott71@icloud.com

Our Services

Hair

Wash, Cut & Blow Dry
Restyle
Balayage
Colour Experts (Incl Correction)
Children's Hair Cuts

Hair Extensions

Beauty Works Hair Extensions

Barbers

Wash, Cut & Finish
Gents Skin Fade
Hair Loss Advice & Maintenance

Beauty

Skincare Specialists
Luxury Facials
Gels, Manicure & Pedicure
Acrylics
Waxing
Lashes & Eyebrows
High Definition Brows
LVL Lashes
Relaxing Massage
Semi Permanent Makeup
Tanning
Ear Piercing
Pamper Days

Weddings

Make Up, Incl Bridal
Hair Ups

Facial Aesthetics

Regular Private Clinics Held



HAZEL KAYE HAIR,
BEAUTY & FACIAL
AESTHETICS



*Hazel Kaye Celebrating 30 Years
Voted No. 1 Salon in the UK*

Stockists of Luxury Hair & Beauty brands. Premium fragrances including Savile Row Men's Fragrance & Grooming, Superdry, Seksy & Jane Packer, designed at Hazel Kaye.

Exceptional Savings

Gift Vouchers - the perfect gift for those special occasions

Covid secure, spacious salon and free parking

Book Appointments/Shop Online

40 High Street, Oakley, Beds, MK43 7RG
Tel:01234 826502,e:hazel@hazelkaye.com,
www.hazelkaye.com



Behind the scenes of the Emmaus Village Carlton Christmas Shop

Meet the lady who spends all year preparing for Christmas...

Carlton resident Anne Geerts volunteers for local homelessness charity Emmaus Village Carlton. For the past three years, she's been preparing all the donated items for the charity's popular Christmas Shop, which sells preloved decorations, festive clothing and gifts.

Emmaus Village Carlton supports people who have experienced homelessness to rebuild their lives, raising funds through its three shops and bistro. Their Christmas Shop opens every year from mid-October, inside the charity's Home Store.



Preparing for the Christmas Shop is a huge task, Anne explains: "It takes me all year – it does not stop! At the moment I'm volunteering four days every week, just to keep on top of all the Christmassy things that are coming in. We normally get a rush of donations at the start of December each year, as everyone unpacks their decorations, decides to change their colour scheme and give their old stuff to charity!"

Anne works behind the scenes on-site; there are multiple storage rooms, a workroom and a pricing room, just for the Christmas Shop preparation: "I start by unpacking and sorting the donations. All the ornaments are stored on shelves, and I have massive boxes for each type of item. We get thousands of baubles every year, which I colour-match along with all the tinsel. I collect together all the Christmas hats, stockings, nativity sets etc. Every set of fairy lights is tested to check it is working. Then I price everything up, ready for it all to be put out on sale. We bring out fresh stock most days, as things sell really quickly.

"I've noticed there are trends each year: last year we hardly sold any tinsel, but this year it's disappearing as fast as we put it out on the shop floor!"

"I love what I do here. I like thinking about Christmas all year because I love Christmas, but mostly it's nice to know all my hard work is helping to raise money for such a wonderful local charity."

The Emmaus Village Carlton Christmas Shop (School Lane, Carlton MK43 7LQ) is open every year from mid-October until Christmas: Wednesday to Saturday 9.30am – 4.30pm and Sunday 10am – 4pm.

Find out more about Emmaus Village Carlton: www.emmaus.org.uk/village-carlton

Almond Garage Doors Ltd



- Servicing Bedford & Milton Keynes
- Spare Parts (including obsolete makes)
- Existing Doors Automated
- EMERGENCY Call Out Service
- New Sales & Installations (Free Quotations)



01234 828953
info@almondgd.co.uk
Fax: 01234 826024
College Farm, Oakley, Beds, MK43 7RX
www.almondgaragedoors.co.uk

*Bring your
garden
to life!*



OAKLEY
BUILDING & LANDSCAPES



Artificial Grass | Building & Landscaping
Driveways, Paths & Patios
Timber & Composite Decking

📞 01234 915049 ✉ info@oakley-landscapes.co.uk
📱 07803 749340 🌐 www.oakley-landscapes.co.uk

Help us make digital health and care services work better for you.



Give us your views in our resident survey and help develop the local strategy to shape services.



Bedfordshire, Luton and Milton Keynes Health and Care Partnership is developing a strategy for digital health and care services.

The use of technology and digital access to services was increased due to the Covid Pandemic and many of the ways people receive treatment or advice have changed and may have been supported by digital or remote services.

We would like to understand how residents feel about digital health and care services, what they think works well and what barriers there may be to residents being able to access services in this way.

We want as many people as possible to share their views and help shape services across Bedfordshire, Luton and Milton Keynes, so please complete the survey at

<https://eu.surveymonkey.com/r/BLMKDigital> The survey runs until **Thursday 12 Jan 2023**.

We are also holding in-person focus groups, to register your interest in joining a focus group, please call 01525 624261 or email blmkicb.communications@nhs.net . The focus groups will be held in community venues and we are offering £50 payment in recognition of time and expenses.

QR Code to Survey



Local Authority	Focus group 1	Focus group 2
Bedford Borough	15 th November, 5:30pm to 8:30pm	16 th November, 09:30am to 12:30pm
Central Bedfordshire	22 nd November, 5:30pm to 8:30pm	23 rd November, 09:30am to 12:30pm
Luton	29 th November, 5:30pm to 8:30pm	30 th November, 09:30am to 12:30pm
Milton Keynes	6 th December, 5:30pm to 8:30pm	7 th December, 09:30am to 12:30pm



For all Pre-School Children

At St Mary's Church Oakley on

Thursdays during School Term 10am to 11.45

Crafts, Painting, Play, Music, Stories and a Healthy Snack plus tea/coffee for the adults

More detail from Dorothy Palmer at
01234 823959



YOGA

Mind and Body

Wednesday	18.00-19.00
Thursday	19:30-20:45
Friday	09.30-10.45

Bletsoe Village Hall

Slow Flow Yoga - Wednesday

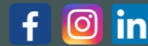
Menopause Yoga - Thursday

Hatha Yoga - Friday

Beginners welcome / Online classes also available

New term starts September / 07973150010

www.wildearthysyogaandwellbeing.co.uk



pto >



Lets Balance out every Negative with a Positive!



We live in an age of social media, which allows us to be in constant touch with the world if we so chose to be and have the know-how. Personally I am of the generation that has not mastered all the mysteries of this technology, but I do hear of all the trouble that it can cause. It allows us to complain publicly if something goes wrong or someone does not measure up to our demands; that a road is closed because of road works; or a road race will use a small stretch of a road one Sunday morning in the year; that a bin was not emptied or drains were not unblocked, that a party at the village hall or social club was too noisy. The list could go on. So many of the contributions seem to be of a negative nature.

This got me thinking about all the positive happenings in the village including all the scores of people who work or volunteer to make positives happen. The list is long and in no special order, with apologies for omissions: there are the parish councillors and clerk, the village hall committee, the Oakley carnival and show, the Social Club, all those who run clubs and organisations for our children, such as the Youth Club, Guides, Scouts, Cubs, Brownies, Beavers, Rainbows, the social and all the sports clubs. The various businesses located in the village often help residents at short notice. I am sure you will be able to add more names and events.

So perhaps next time we want to criticise or complain on social media, it might also be great to add a positive comment, because without all the people who get involved there might not be anyone there to complain to.

Anon

Prior to Feb 2022 you and your community identified speeding and vehicle related crime and anti-social behaviour as your number one community priority. Since February 2022, your rural policing team have reviewed all reports of theft from vehicles, theft of vehicles and reports of vehicle reported anti-social behaviour. We have proactively taken steps to address the culture and attitude of those driving through our green patch of the county with high visibility patrols and traffic operations.



Since February 2022 we have:

Conducted 142 speed enforcement operations with the use of speed monitoring devices.

Issued 45 speeding tickets, with hundreds of drivers stopped and offered advice.

We have conducted 163 visits to victims of vehicle related crime.

In addition to our daily patrols around our towns and villages, we have conducted 89 intelligence lead patrols. In just the last six weeks we have recovered four stolen vehicles from our area (all stolen from outside our geographic footprint).

We are very grateful to everyone who has supported us to date. The support in providing speeding data and reporting incidents is greatly valued, as it allows us to target our limited resources. We would particularly like to thank our local Speed Watch groups who are very active on our streets, providing reassurance, deterrence, and advice. We will continue our vehicle related enforcement efforts, however we must all work together to continuously identify what affects our community most. We therefore would like to introduce the online, **"Have Your Say" survey**:

<https://rb.gy/g1pwky>

By clicking this link and filling out the quick questionnaire, you can notify Bedfordshire Police of any issues in your community you may wish us to focus local resources towards. Every survey completed, allows us to collate data and better understand your local needs. The survey does not take longer than a few minutes. Please do continue to report all emergencies and report crime via 999/101.

Neighbourhood Policing North Rural

Oakley.IT
maintain .IT
repair .IT
train .IT

CompTIA
A+
CERTIFIED
recommended
pc repair company

Jan Rymarz – Principal IT Technician / Trainer

Fast PC and Laptop Repairs
Clear and Friendly Training
Fast and Efficient Service
Years of experience and services covering everything!

A few recent customer comments
"Great service"
"Trustworthy & reliable"
"Efficient & Affordable"
"Highly recommended"

100% Satisfaction
Regular Feedback
Online

07401 250 118
help@oakleyit.co.uk | www.oakleyit.co.uk



YOGA CLASSES

WITH JANE

Jane specialises in creating a space where you can relax and restore, feel nurtured and re-energised. We start with a breath

**WILD EARTH
YOGA/WELLBEING**
WITH JANE

MENOPAUSE YOGA

Jane has been through the menopause, a transformational experience that led to her knowing herself better and being happy with what she found.

Jane is passionate about helping women to work with their menopause symptoms using yoga, breath work, meditation and philosophy to help bring relief and comfort.

No prior yoga
experience needed

Classes In Person & Online



WHITE'S Lawnmowers & Garden Machinery

Sales ~ Service ~ Parts ~ Hire
Briggs & Stratton Service Centre

STIHL **TIGA** **AL-KO**



LAWNFLITE **MTD** **Indespension**
... & many more

LARGE SELECTION FOR ALL YOUR GARDENING NEEDS

01234 826066

info@whites-online.co.uk

www.whites-online.co.uk
College Farm, Oakley, Bedford, Bedfordshire, MK43 7RX



GARDEN WALLS TO COMPLETE EXTENSIONS

BRICKWORK | POINTING | DRAINAGE | WINDOW / DOORS

ALTERATIONS | GARAGE CONVERSIONS | KNOCK THROUGH

UPVC WINDOWS & DOORS | PLASTERING | CHIMNEYS | +MORE

WWW.BEDFORDBRICKLAYING.CO.UK

07732 428 993



Oakley Youth Club.

Thank you to all members for your support with the change of leadership at the youth club.

We have enjoyed quizzes, games, outdoor fun and a Halloween party.

We still have spaces for new members, come along and have some fun, relax and meet up with your friends.

Sonya, jj, Jules and Maddison.



Hello Autumn! Hello New Term!



**Oakley Youth Club invites
All year 7-8 Lincroft children
starting Friday 4th November
7-9pm**

**@ The Old School House, Oakley
£2 Entry**



**Interested?
Contact Sonya
oakleyyouthclub@gmail.com
all team members
are trained and DBS checked**

PIC•COLLAGE

Phantom Sprayer

Christmas holidays will soon be upon us. If your children are likely to walk the family dog, then please train them to properly clean up after the family pet. It is very easy to show them how to put their hand right inside the bag very carefully and



pick up then turning the bag back outside in with the mess safely inside afterwards, and then to find a bin. There is always one fairly close by as we have plenty around the village.



Leaving the bag on the ground, hanging it in a hedge or a tree is a very unpleasant thing to do, and that sort of thing, upsets others walking on finding this disgusting sight.

Have a very Merry and dog clean Christmas everyone, and make a New Year resolution to always clean up wherever you are.

AYANNA EMILIA DESIGNS

Graphic Designs Services

I am a local graphic designer and illustrator who specialises in marketing design, promotional designs, and digital content. I work with a range of clients, especially local businesses, and individuals. As a one-woman band, I provide a one-to-one bespoke service, including initial consultations, proofing and design support. I am available for hire for:

Promotional items

(business cards, posters, brochures etc.)

Logos

Social media/video content

Bespoke gift wrap designs:

(cards, wrapping paper, gift bags)

Party Invitations

If you're interested in any of my services, please feel free to drop me an email or give me a call and we can discuss your requirements further.



Scan here for my Etsy

Phone: 07934157839

Email: ayanna@ayannaemiliadesigns.com

website: www.ayannaemiliadesigns.com

Instagram: @aj_emilia1998



NEIGHBOURHOOD PLAN

The Group carried out the review of the Plan over Summer 2022 and decided it conformed to the current Bedford Borough Local Plan to 2030.

They considered all the different sections one by one and decided that each one conformed to the Bedford Local Plan.

They decided that the Affordable Housing needs were met by the development in Parrotts Close and the 30% allocation from the sites currently proposed over the Plan period. The Station Road site was recently refused by the Bedford Borough planners. As part of the refusal they identified policies in the NDP as well as their own planning policies. The High Street site has some drainage issues and they are talking with the appropriate authorities. The Group did not consider the Bedford Borough Local Plan to 2040 as it has not been through the planning process at present. The Group decided that when it has been through that process we will review the Plan again, probably over summer in 2023. They considered that Oakley NDP was still conforming to the Bedford Borough Local Plan 2030.

Pat Olney



Of All Ages Wanted to Protect our Children



Our present volunteers mostly come from the older age bracket and to ensure we continue into the future we would like to appeal to other volunteers (over eighteen) to join Oakley Speed Watch.

Are you one of several concerned villagers or maybe in an existing village group who are happy to diversify and would like to commit to one hour a month, in sets of three, to keep our families safe?

Would you like to go together to the 2 hours of training at Police HQ in Kempston?

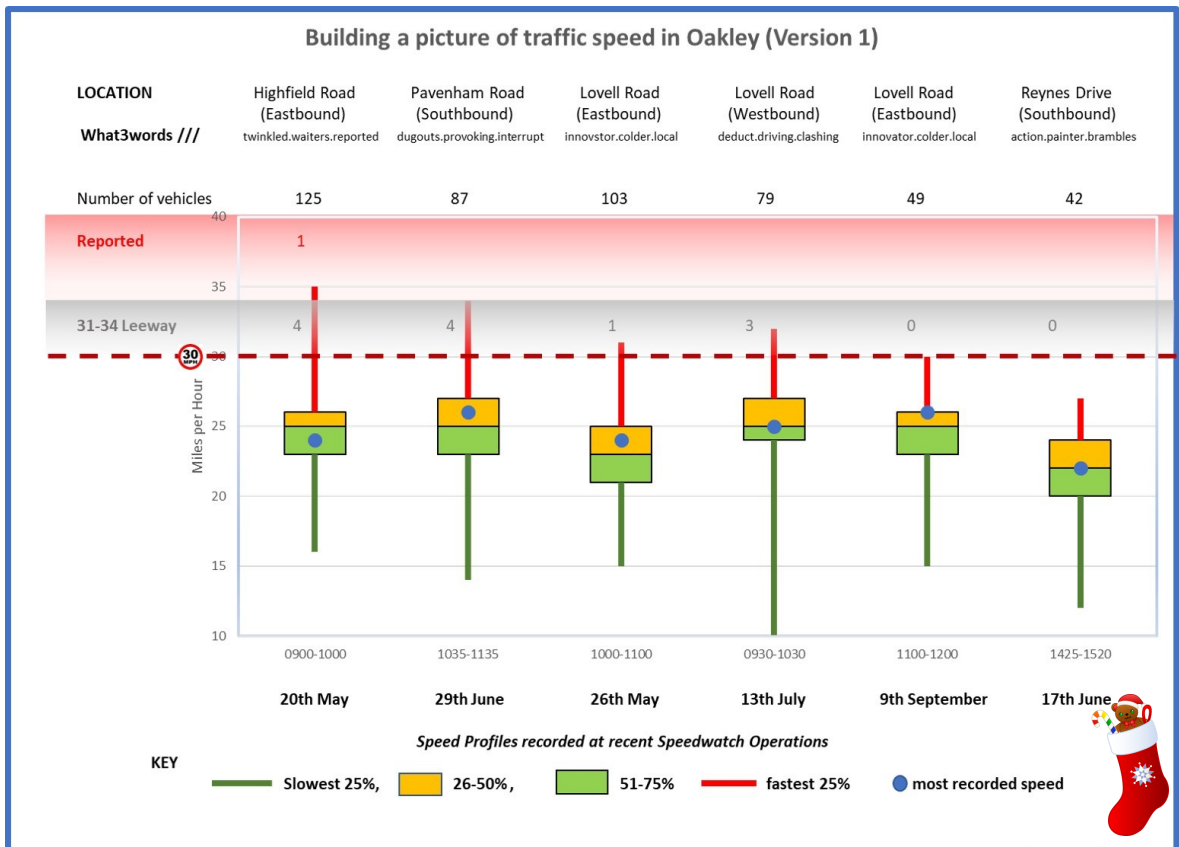
Then why not contact Paul Philips on paulphillips65@gmail.com or call him on 07968 122 301 and talk it through with him.

OAKLEY SPEEDWATCH – Building a picture of traffic speed in Oakley

We are pleased to report that in our 6 most recent operations that whilst 485 vehicles passed us only one had to be reported for excessive speed. A further 10 were actually above the limit but within the tolerance we accept. However, considering we have a warning bollard and at least three individuals wearing dayglo jackets at the roadside, to be caught speeding past us should perhaps raise some concern about the drivers' observation and hazard perception skills!

When we are on an operation, passers-by often ask how many we have caught and then follow that with suggestions of a different time and place that they feel might be more worthwhile. To help us in selecting locations we started noting the speed of every vehicle passing and used the data to create speed profiles based on the range and frequency of speeds recorded.

In the chart below the vertical red line at the top of each profile shows the speed range of the fastest quarter of vehicles passing, the green line at the bottom shows the range of the slowest quarter. The box in the middle shows the speed range of half of the



traffic divided into the quarter above (amber) and quarter below (green) the average speed. The blue dot shows the most recorded speed.

Looking at Highfield Road as an example, half the vehicles (green and yellow boxes) were in the range of 23-27mph, 24mph being the most recorded speed. Pavenham Road looks similar but there the speed range of the yellow group was bigger and the most recorded speed 27mph significantly higher.

Reynes Drive may not have been an obvious choice for an operation since the profile clearly shows speeds well below 30mph but the time and location were chosen to consider the risk speeds in that location (heading towards the Green from post office end 50 yards from the blind left-hand bend on a sunny summer afternoon with youngsters playing on the Green. There were cars parked all the way down on the nearside, a car parked on the bend on the offside and more parking around the bend!). Clearly many drivers acknowledged the danger, with 22mph the most recorded speed, but perhaps not so much recognised by the 10 red line drivers approaching between 24-27 mph.

We recognise that statistically the sample of vehicles is small and that in particular the average speed is perhaps artificially lowered by very slow vehicles and the 'convoys' which form behind them.

We are aiming to continue building a picture of speeds in Oakley and particularly around school opening and closing times when the risk to residents might be greatest. We are always open to suggestions from residents of times and locations where traffic speeds are thought to be a concern.

Sales, Lettings & Auctions

Lane &

HOLMES

Est. 1985

MAYFAIR
OFFICE GROUP

move
withUS



Our wealth of **experience**
and **friendly service** makes
us the team you can **trust.**

01234 327744 | sales@laneandholmes.co.uk | laneandholmes.co.uk

JUST INLINE JUST INLINE WINDOWS

WINDOWS, DOORS & CONSERVATORIES

EMAIL: info@just-inlinewindows.co.uk

WEB: www.just-inlinewindows.co.uk

TEL: 01234 826740 | 07817 129744



WINDOWS / DOORS / UPVC / ALUMINIUM / BIFOLDS / LANTERNS

Just Inline Windows is a Bedfordshire-based double glazing business specialising in all aspects of glazing installations. We are based in Oakley and cover Bedford, Milton Keynes, Northampton, Luton & surrounding areas. We have a reputation built on high quality services, great value and an exceptional level of customer service and aftercare.



LOTS OF LOCAL RECOMMENDATIONS
CONTACT US FOR MORE INFORMATION

Down Memory Lane

**Miss Margaret
Dora Robertson MBE**

This photograph was taken in July 1971 to mark the retirement of Miss Margaret Robertson who had served as the Headmistress of Oakley Primary School for over 20 years.

As the two longest serving pupils myself and Beverley Hulatt were asked to present Miss Robertson with a gift for her service to the village. On behalf of the community we presented her with a painting of the village church. Beverley and I are both standing in the photo which was taken on the front lawn of the Old School. A year or so later the school was closed and everyone moved up to the newly built one on the current Station Road site.

Miss Robertson was born in 1905 and when she retired moved to the Duke of Bedford houses in Station Road. She passed away as a result of a tragic car accident in 1978 and is buried in the Oakley Church graveyard.

In addition to her devotion to teaching her passion was music and she held official responsibilities within the Bedford Choral Society from 1943 until her passing in 1978. She was awarded the MBE for her work in supporting musical activities in the Bedford area.

Miss Robertson was a lady who impacted positively on many Oakley families past and present and many villagers will remember her fondly.

Richard Worker



LAURA ASHLEY

SINCE 1953

The David James interiors factory shop is now open as part of our kitchen lifestyle showroom. Displaying a beautiful selection of wall paper, paint, fabrics, lighting, mirrors, bedding and furniture.

Pulloxhill Business Park, Bedfordshire 01525 722230



WWW.DAVIDJAMESHOME.CO.UK



Oakley Show 2022



Thank you to everyone who supported our show this year. We raised the largest amount we have ever raised for the village hall of £645 which will help towards the renovations taking place.

There were fewer entries in the fruit and vegetable sections this year, probably due to the very hot, dry weather which made growing very difficult. There was also a reduction in the preserves section probably due to the lack of fruit and vegetables to preserve.

The baking and craft sections were great, the talent of people in the village is amazing and we really appreciate them sharing their efforts with us.

We held a raffle with prizes donated by village businesses and we would like to thank them all.

This year we changed the way we held the auction of produce at the end of the show, rather than auctioning individual entries we made them into veg boxes which we auctioned, this seemed to be well received.

We were especially pleased with the entries from the youngsters in the village, the jubilee crowns and decorated gingerbread men were all lovely.





Balli from the Post office kindly donated a new cup for the best overall in the children's sections, she wanted it to be called the Queen Elizabeth award and we were pleased to present it to Seth Greenslade.

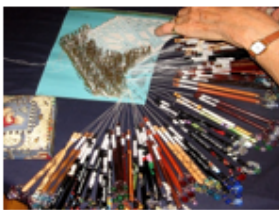
The Best in Show plaque was presented to Melanie Halls, very well done to her.

It will not be long until we start our preparations for next year, please let us know if you have suggestions for any new classes.

We look forward to seeing you all next year with hopefully lots of amazing entries.

Oakley Show Committee





CLAPHAM SCHOOL FOR SENIORS

We are ready to welcome back members and new members (over 45 yrs) on Wednesday 11th January 2023, who want to start a new hobby or continue a hobby.

We meet on Wednesday (term time only) at Clapham Methodist Church on the High Street 9.15am – 4.00pm. The fee is £20 per term payable on enrolment day which is the 5th January.

Group subjects include: Scrabble, Dominoes, Lace making, reading, singing, Arts & Crafts (of all types), knitting, crochet, painting and a couple of new classes of card making and a card school. Plus many more not listed!

Bonuses are you get to meet new people/friends and join in the community spirit! And of course, learn a new hobby.

Please note we do not supply the materials you will need to bring them along.

Any questions or queries please give us a call:
Berta Barnes or Miriam Pulman
07704 850974 07790 267176



Oakley Educational Foundation

This Foundation exists to assist young people between the ages of 16 and 25, who live in the Parish, with grants towards the cost of books and tools, etc. in furtherance of their education.

Applications are accepted in the months of May and November and must be accompanied by receipts of purchase. Application forms can be obtained from the Clerk, Louise Tunley.

For further information, or for an application form, please contact Louise Tunley on 07917 462213, by post at 19 Goldington Road, Bedford, MK40 3JY or by email at louise_tunley@yahoo.co.uk.

Paint -your-own Ceramics in Oakley



Ceramics painting for everyone!

Join Katrina and the team for some ceramic painting fun where you live! Painting your own mugs, cups, tablewear or ornaments is a great way to spend time together - or just to take a moment to yourself.

You will often find Katrina's Oakley based, mobile studio out and about around Bedfordshire - now she would love to give the opportunity for people living nearby to have a go!

All age paint your own



- Adult Workshops
- Paint with grandchildren
- Birthday parties
- Friends meet ups
- Adult ceramic painting
- Evening sessions
- Girls nights
- Bespoke designs to order

We can come to you!
Message or call to book a session
Katrina - 07908987959

myLittleFeet



Baby Ceramic Painting

- Hand and feet printing
- Gifts (fast local turn-around time)
- Home visits for individuals or NCT groups
- New baby visits
- Pre school visits

Affordable, fully insured Ceramics Painting from £6. Vouchers available.

Prices include glaze and firing. Oakley Collection/Delivery included

Ceramics painting incl parties and event hire: Insta/FB @beandbottle.ceramics
Baby/toddler: Facebook @MyLittleFeetBedford, Insta @mylittlefeetbedford
Email beandbottleceramic@gmail.com, Call/WhatsApp Katrina on 07908987959



The Bee&Bottle Ceramics

Seasonal range

Price List

General range

Two for £16
Bauble £10

Hanging decs

- Tree
- Robin
- Angel
- Star
- Heart

Two for £12

OFFERS!

Large theme plate

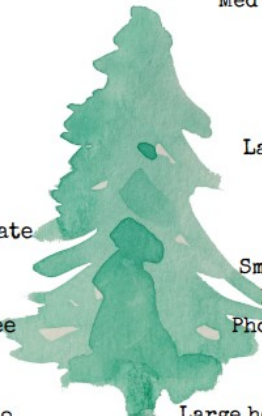
- Santa
- Snowman
- Christmas tree

Two for £28

Star plate £18

December/ Christmas and New Year local home

sessions available to book now, from £30!



- Plates
- Small plate £10
- Small Heart Plate £12
- Small Square plate £12
- Med Square plate £14

- Cups
- Mugs £11
- Cup £11
- Large cup £13.50

- Misc
- Bowls £13
- Small sq Tiles £6
- Plant Pot £16
- Photo frame £17.50

- Boxes
- Large heart, star, butterfly

Large £14

Small £10

CONTACT: Instagram @beandbottle.ceramic Facebook @thebeandbottle
 Phone: 07908987959 Email: beandbottleceramic@gmail.com



The Cafe at W&H Peacock is

OPEN

View the salerooms for our upcoming auctions and then relax with a coffee and a slice of cake.

Our unique cafe in Bedford Auction Centre with free wi-fi comfortably seats over 100 customers. We serve cooked breakfasts, paninis and sandwiches, light lunches and snacks plus a range of hot and cold drinks.



Eastcotts Park,
Wallis Way,
Bedford,
MK42 0PE
01234 266 366

Visit
www.peacockscfe.co.uk

for more details on our opening hours and to view our full menu.

W&H PEACOCK AUCTIONEERS & VALUERS



Auction Sales & Valuations

Valuation, collection and auction service of individual items through to complete property and commercial clearances.

Call for a free no obligation quote or email info@peacockauction.co.uk

SALE ENTRIES NOW INVITED

www.peacockauction.co.uk

Eastcotts Park,
Wallis Way,
Bedford, MK42 0PE

01234 266366



Tudor Rose Patchwork

*"Bedfordshire's
Foremost
Threadcraft
Emporium!"*



We're on Station Road

**We have lots of general sewing
needs – haberdashery and fabric!**

*Patchwork Fabrics, Kits, Patterns
Workshops - Regular Groups
Embroidery, Tapestry, Knit Yarns Beads,
Goldwork, General Sewing
Pfaff and Janome Sewing Machines
Books, Dyes, Needles, Knitting Pins ...*

**Open Monday to Saturday
9 a.m. to 5 p.m.**

**Oakley Park, Station Rd., Oakley, Beds. MK43 7RB
01234 824983 – info@tudorrosepatchwork.co.uk
<https://www.tudorrosepatchwork.co.uk>**

Oakley's Own Coffee Shop



for Coffee

Coffee, Tea, Chocolate, Cold Drinks

Hot Food, Cold Food

Breakfast, Lunch, Morning/Afternoon Tea

All Food made on the Premises!

**Open Monday to Saturday
9 a.m. to 4 p.m.**

Oakley Park, Station Road, Oakley - Phone 01234 824113

Oakley Kindergarten News

Our first term as a kindergarten has been very busy settling into our new environment. The children have all made a seamless transition and are exploring all the new space has to offer.

We have had some staff changes this term with Mrs Talbot and Miss Bance going onto a new setting and we wish them both the best of luck in their new roles. We have welcomed Mrs Mamidi and Mrs Kinns to the kindergarten team and they are settling well, getting to know the children and their new environment.

Now that we have settled into the building and are enjoying free flow play in our permanent garden, we are developing our extended outdoor space with our very own kindergarten nature reserve. This is to include the Forest School area, mound for climbing, kitchen garden, wildflower meadow and pond habitat.

We have also been into Brockwell Meadow, on one of our regular monthly nature rambles with Patrick Knight. We have planted some wildflower seeds and will be checking on them in the spring to see how they have grown.

For December's nature ramble, we will be introducing feeding stations, for the wild birds, to our outdoor provision.

Admissions

If you would like to register your child for a place at pre-school, please contact us on 01234 826452 or by email: info@oakleypreschool.com Our website is: www.oakleypreschool.com

Follow us on Facebook to keep up with our latest news and events.

For information on funding you can see details on our website with a link to Childcare choices or alternatively you can contact the Family Information Service 0800 023 2057



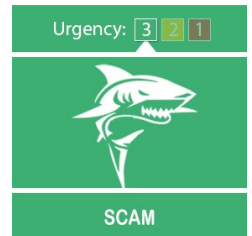
Sally Martiello





Bedfordshire Police has issued advice after seeing an increase in elderly victims coming forward after being targeted by fraudsters.

Officers are seeing a spike in Bedfordshire, especially in the Dunstable and Luton area, with fraudsters targeting 80 to 95-year-olds in particular, pretending to be police officers in order to scam them out of money.



Detective Inspector James Day said: "We have seen a recent increase in elderly victims being targeted by people saying they are police officers and that there is an investigation ongoing regarding their bank.

"The callers convince the victims that they need to withdraw cash and place it in an envelope with their bank card outside their home address so 'officers' can pick it up and complete checks relating to the investigation. From there the fraudster then share the card details across their network.

"Please remember police officers will never ask you for your card details, ask you to withdraw cash or to leave it somewhere for collection."

Please share these tips and advice with your friends, family, and neighbours:

- The police will never ask for your PIN
- The police will never ask for you to withdraw money on their behalf
- The police will never ask you to leave cash out anywhere for collection
- The police will never ask for your bank cards
- Never give out personal information over the telephone
- Never withdraw money for anyone you have never met

NAO Cattery



BOOK NOW!

07411 136691

naoservices111@gmail.com
www.naoservices111.weebly.com

Bramble Lodge, 29 Oakley Road, Clapham, Bedford MK41 6AN

Opening Hours: 9.00-11.00 Mon-Sat & 18.00-19.00hrs Mon-Fri
Sunday and Bank Holidays Closed

* Note that all boarding cats must be healthy on arrival and fully inoculated against cat flu and contagious enteritis. Terms and Conditions apply, charge includes insurance and vet on call.

NAO Cleaning

- Regular cleaning (Weekly, Fortnightly, Monthly etc)
- Home Care Cleans
- Spring cleans

- Moving In & out clean
- Builders before and after clean
- Tenancy beginning & end clean

FOR A FREE ESTIMATE CALL TODAY ON
07411 136691

Bramble Lodge, 29 Oakley Rd, Clapham, Bedfordshire MK41 6AN
www.naoservices111.weebly.com
naoservices111@gmail.com

We cover all of Bedfordshire

RP TESTA

PLUMBING & HEATING SERVICES LIMITED

A professional service with over 25 years experience :

All general plumbing requirements
and full design & installation for:

- ◆ CENTRAL HEATING inc. LPG
- ◆ BATHROOMS inc. tiling etc.
- ◆ UNDERFLOOR HEATING
- ◆ UNVENTED HOT WATER





FOR A LOCAL AND RELIABLE SERVICE CALL
T: 01234 781827
www.testaplumbingandheating.co.uk

News from the tower

There has been quite a lot going on for the Oakley Band of Bell Ringers in the last few months. The clock on the St Mary's bell tower has been refurbished. It is around 400 years old and only has one hand, showing the hour. The clock hammer is connected to one of the bells and our Tower Captain has had quite a time of it, trying to get it to chime correctly. One evening it chimed 14 times!!

The sad death of Queen Elizabeth II in September was marked by the solemn tolling of church bells across the across the country. A few of us took it in turns to toll the muffled tenor bell of St Mary's. The muffling of the bells does not take place very often. It involves attaching a pad of resilient material to the clapper (the part that strikes the outside of the bell) to deaden the noise. Some of the band also rang the 12 bells of St Paul's Church in the centre of Bedford, which had not been rung muffled since the death of King George VI.

A few of us have been gaining more ringing experience by ringing the bells of St Paul's Church twice a month. Ringing with 12 bells is very different to ringing with the 6 we have at St Mary's. We also went on a tour of 12 bell towers. We rang at St Mary's Church, Amersham, St Mary's Church, Luton, and All Saints Church, Luton, all very different bells to ring.

At the time of writing, Christmas is just around the corner and that is quite a busy time for us bell ringers, as long as we can get enough of us together. **More bell ringers and people who want to learn how to ring are needed.** We practice on Friday evenings from 8pm to 9:15pm and ring on Sunday mornings before the services at St Mary's Church. If you would like to come along on a practice night to see what it is all about and to have a go, please contact our Tower Captain, Bill Sellars on 07980 745292 or email thesellars@btinternet.com.

Shelley Abbott



Steve's Snippet No.61

I only received one partial response to last issue's cryptic clue so I'm letting it run for another issue before revealing the solution: so, moving on...

In these harder times, it is good to be able to share tips to enable us to save some precious energy and money.

The talk of the moment often seems to be about air fryers. For those who do not know, or wonder what all the hype is about, an air fryer is simply a small oven. It's virtue is its small size and ability to heat up the cooking compartment (or compartments – dual-compartment types are available) fast and efficiently.

Various makes are available in various capacities, and prices vary, from budget ranges to more expensive types, with multiple program options and app control using a smartphone: any way you choose, the operating principles are the same.

I looked at reviews online before choosing a popular mid-range, mid-priced make. It has a single compartment of 6.8 litre capacity, which is quite adequate for 2 people, maybe 4, depending on what you want to cook. What can you cook? Almost anything that you can fit in it and would normally cook in a full oven.

I have tried various foods and cooking times are often reduced, results are very good, and our gas oven has been used much less. As we have solar panels too we are able to save even more if we choose our times carefully.

Search online for reviews, videos and recipes, there are many available – I think you will be able to benefit from using an air fryer.

Oakley Allotments

Winter is finally upon us again after another unique year - drought has been replaced by seemingly endless rains. We were watering new planting in mid October as the ground was still very dry. Although we were able to use water from our own butts a trip or two to the allotment taps was necessary – an event unheard of in past years.

Our own allotment is very productive and we are better organised than ever before, planting over-wintering vegetables in anticipation of next year's vagaries and preparing vacant ground with fertiliser etc. depending on our plans.

Here are the experiences of one of this years new tenants – Jules gives her account of her new allotment:-

I moved to Oakley during 2020 when life was very much in lockdown. I was home schooling my daughter at the time and my work lifestyle had changed dramatically. I desperately needed a distraction that would break the hamster wheel routine. That is when I heard about the Oakley allotments, a wonderful bit of land for locals to use, little did I know at the time what a wonderful community spirited place it is.

I have always been a keen gardener, but never dabbled in vegetable growing and the support and help I have received from my fellow plot owners have been fantastic.



When my adventure started, I must admit I was taken aback when I first set eyes on my plot, it was extremely overgrown and looked neglected. Little did I know at the time that the previous tenant had a reputation for excelling in

the local vegetable growing shows. He was extremely talented; this moment I knew I had to carry on his legacy!

Underneath all the weeds there was a superbly kept piece of land and lots of manure, which was a welcomed kick start for me.



I started off by covering the land and killing off all the weed roots. Once that was successful I decided to create some beds out of old pallets. I wanted my allotment to be clean, tidy and low maintenance, so I

could ensure my time was spent growing vegetables and fruit rather than cleaning up weeds. Here are before and after pictures.



This summer I managed to successfully grow onions, peppers, courgettes, strawberries, sweetcorn, chillies and rhubarb (There would have been more if the voles had left my plot be).

I have since purchased a potting shed for my daughter and me to enjoy; we plan to start growing from seeds early 2023. I will report back on how we are progressing in the summer...

Thank you Jules – we look forward to a report on your progress in next year's summer edition.

Meanwhile, we have a short waiting-list but should have sufficient new space available after the cleared ground is finally made ready for allocation. We have a contractor ready to complete the work soon.

On the negative side, we have had incidents of some fly-tipping at the allotments – this will be dealt with, but it is unfortunate that we should have to. Please respect your own world!

Steve Nicholas

Steve's Snippet No.62

- This page is intentionally left blank - (SIC)

In days past, just after extinction of the dinosaurs, when I was employed at the sharp end of mainframe computing for a big local company (now long-gone), I would sometimes encounter this, slap-bang in the middle of a page (otherwise, a blank page) in a computer manual produced by a leading computer manufacturer.

The addition of the explanatory words made their very presence untrue - it would have been more appropriate to add, "except for these words, of course".

At what point does this apparent need for the definition of a blank page become patronising?

To be fair, this manufacturer's technical/trouble-shooting manuals were often a last, desperate resort to attempt to find a means of persuading a rebellious computer to do your bidding - the more urgent the problem, the more blank every page seemed.

Admitting defeat, I might call the manufacturer's technical support, knowing that the first response would be, "Have you read the manual?", despite the fact that they often agreed their manuals were not the best; suitable answers could be:-

1. I have - have you?
2. It is in English, right? (American company)
3. Yes, but is a translation available.
4. Is there possibly a manual for the manual?

Chinese manuals are often very entertaining but, in worst cases, useless otherwise. I have often wondered why they do not employ a properly competent translator to check them. I might volunteer, but I've realised that I know VERY little of Chinese languages.

Notes:-

a) "a large local company (now long-gone)" - nothing to do with me, I was long-gone before then.

Steven Nicholas

SHARNBROOK MILL THEATRE Your award-winning, local theatre
Patrons: Joanna Bond & Hugh Laurie CBE
Registered charity (10784)

Thank you
for your valuable support during 2022!
We send you Christmas Greetings
and our very best wishes for the New Year.

A MAN OF NO IMPORTANCE
Tuesday 28th March – Saturday 1st April, 2023

A musical drama
set in Dublin, 1964.
A bus conductor plans to
stage a controversial play
at his church.
Personal truths are revealed
that will change his life for
ever and show the power
of family, friendship
and acceptance



TICKETS £16 ON SALE FROM 29TH NOVEMBER at
www.sharnbrookmilltheatre.co.uk/tickets
or Pick-A-Lily Florists, 61 High St Park Lane, Sharnbrook, in Person
CHARITY NIGHT will be Tuesday 28th March 2023, in support of
Rotary Club of ~~Buckden, Chichele~~; check our website for details

COOP COMMUNITY FUND
Our project is to install mid-stage curtains
that will enhance our performances for the
enjoyment and wellbeing of the community.

As a member, or by becoming a Co-op member for just £1,
when you buy selected Co-op branded products and services,
you earn money for yourself and your chosen
local community cause... Please choose us!
Visit: coop.co.uk/membership Thank you!

Onward and upward...!
Volunteers needed
We invite you to join our Fundraisers,
to help raise funds for our on-going projects.
A warm welcome awaits you at The Mill...
Please contact
Christine Summerling on 01933 353282
christinesummerling@gmail.com

www.sharnbrookmilltheatre.co.uk

Amigo Tuesday 13th December - Come along to the Bedford Arms in Oakley for carol singing beginning at 8.00 p.m. We shall also be able to use handbells.

Tuesday 24th January - Take your seats for the showing of the film "Stan and Ollie" beginning at 7.30 p.m.

An excellent and entertaining afternoon was spent on Saturday 19th November listening to the band "Saxophrenia" from 2.00 p.m. I shall arrange another opportunity for the band to perform.

John Dixon



Oakley Rural Day Centre

Oakley Rural, The Old School, Lovell Road, Oakley, Beds, MK43 7RX

Tel: 01234 824935 Mobile: 07733 227374

Email: oakleyruraldaycentre@yahoo.com

Web: www.oakleyruraldaycentre.weebly.com

Registered Charity No: 1060283



NEWSLETTER Winter 2022

Welcome to our latest Newsletter. If anyone has access to the internet please visit our website, www.oakleyruraldaycentre.weebly.com The site is updated regularly with the latest news from the centre.

We also have a **Facebook** page for anyone who has a **Facebook** account. This will be updated with the latest news and photographs of events at the centre. The **Facebook** page can be found at www.facebook.com/oakleyruraldaycentre We are also producing articles in various publications throughout Bedford and surrounding areas to raise the profile of the centre.

DAY CENTRE

Our Day Centre provides our older people with a place where they can make friends in a warm and comfortable atmosphere. A range of activities including crafts, entertainment, quizzes and good old conversation are at the heart of our day.

We serve freshly prepared home cooked lunches together with tea, coffee and toast at the start of the day with beverages throughout. The Centre is open Tuesday, Wednesday and Thursday.

For details of costs and advice please contact Lynne on 01234 824935 or 07733 227374 Tuesday to Thursdays 9.00 to 2.45pm.

Enquiries welcome from Bedford and surrounding villages in North Bedfordshire.

ACTIVITIES

Since our last newsletter the centre has been busy with clients taking part in various activities. In August we had a seaside themed week with sand, buckets and spades, themed quizzes, games and a Punch and Judy Show. For lunch we had fish and chips with an ice cream cornet for dessert. The clients really loved it. Other activities included bag decorating, basket weaving, wooden coaster design, a music quiz and making bird feeders. We had a gentleman from Oakley, kindly come down to the centre and played his saxophone. The clients really loved listening and music brings back so many memories.

CHRISTMAS BUILD UP

We will now be building up to our Christmas party week. Activities will include card making which everyone enjoys. We will be making various Christmas decorations for the tree and also hats for our party. Kempston Hammer Choir will be attending the day centre in December to entertain everyone.

SUPPORT THE DAY CENTRE THROUGH AMAZON SMILE AND EASY FUNDINGRAISING

If you shop with Amazon please consider shopping through Amazon Smile and registering our day centre. Every time you spend Smile will donate half of one percent to our charity.

Did you know that whenever you buy anything online – from your weekly shop to your annual holiday – you could be raising free donations for Oakley Rural Day Centre with easyfundraising? There are over 7,000 brands on board ready to make a donation – including eBay, Argos, John Lewis, ASOS, Booking.com and M&S – and it won't cost you a penny extra to help us raise funds.

All you need to do is:

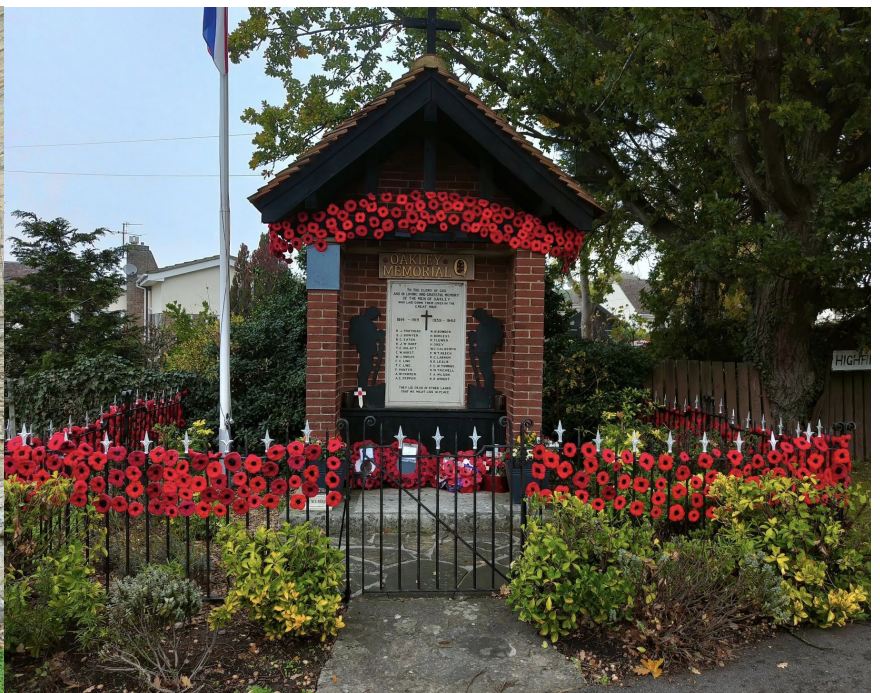
1. Go to easyfundraising.org.uk and register on the site and choose the centre as your preferred charity. 2. Every time you shop online, go to easyfundraising first to find the site you want and start shopping. 3. After you've checked out, the brand will make a donation to Oakley Rural Day Centre at no extra cost to you whatsoever! There are no catches or hidden charges and Oakley Rural Day Centre will be really grateful for your donations.

Thank you for your support.

smile.amazon.co.uk



Remembrance Day 2022



Girlguiding in Oakley



Oakley has two guiding units – Rainbows for girls aged 4 -7, and Brownies for girls aged 7-10. If you would like to enroll your daughter in either of these units or any other units locally, please register your daughter at <https://www.girlguiding.org.uk/information-for-parents/register-your-daughter/>

If you would like more information about the individual units before you register your daughter, you can use the contact details below.



1st Oakley Rainbows (Wednesdays)

We have had a busy term so far, even celebrating a promise ceremony at Pizza Express! And the unit is growing! We are delighted to welcome Caroline to the unit team, and as well as meaning we can organise more fun meetings, we also have some places for new members! If your daughter would like to join us, please register online using the details above.

Unit contact: Amanda Keen (Assistant Leader) oakleyclaphamrainbows@outlook.com



1st Oakley Brownies (Fridays)

If you have a daughter aged 7-10 and would like to sign up for Brownies, please register on Go

<https://go.girlguiding.org.uk/>

Or contact Lindsay for further information by email : oakleybrownies452@gmail.com

In what has been a calm and reassuringly 'normal' term, there is one significant change to report – the promise. Brownies must now promise to "serve the King," while leaders must remember to sing the correct words in the introductory song which we have known for so many years as "to save the Queen". The rest of the unit joined the three new Brownies in making their promise again.

This term Brownies have been working on their Reflect Skills Builder badge. One highlight was a night-time walk to explore the local community followed by hot chocolate. Another popular activity was investigating different substances including the strange properties of oobleck (cornflour and water). Brownies had to come up with questions about them and in this they did themselves proud.

The final badge activity is to plan and make invitations for the Christmas party – I am sure there will be plenty of fun to be had. We are also pleased to see a number of Brownies doing interest badges in their own time and working towards a theme award.

For Remembrance Day Brownies decorated tea light holders beautifully and lit a candle in remembrance.

Lindsay Saunders





Oakley Village Hall

Church Lane,
Oakley,
Bedfordshire, MK43 7RJ

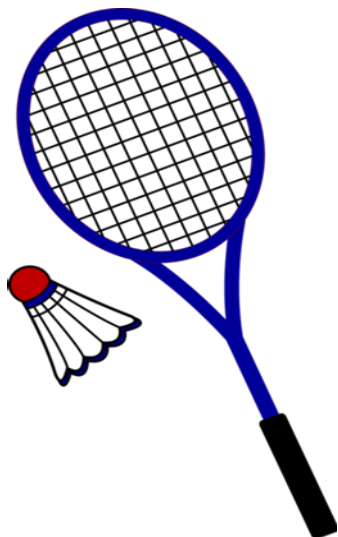
A well-appointed village hall
Main hall with stage and PA system
(Main hall is air conditioned)

Separate meeting room with bar

Well equipped kitchen

For information and bookings
please telephone 07788 796996

OAKLEY BADMINTON CLUB



MEET PEOPLE WITHOUT MASKS

AND GET FIT !

Wednesday 7-8.30pm

Sign up now All ages and abilities welcome.

Tel. 07557 441206



INTERIOR ♦ EXTERIOR ♦ DOMESTIC ♦ COMMERCIAL

Professional & Reliable Local Decorators

SPECIALISTS IN WALLPAPER HANGING

DUSTLESS SANDING

AIRLESS SPRAYING

EXTENSIVE PORTFOLIO

TESTIMONIALS FROM CLIENTS AVAILABLE

TEL: 01234 824173

MOB: 07743 176201

EMAIL: info@oakhamdecorators.co.uk

WEBSITE: www.oakhamdecorators.co.uk

NIGEL L. WILLE

PLUMBING & HEATING ENGINEER

GAS SAFE REGISTERED

BOILER REPLACEMENTS

FULL CENTRAL HEATING INSTALLATION

BATHROOM SUITES

RADIATOR REPLACEMENTS

TAP REPLACEMENTS

ALL DOMESTIC PLUMBING, HEATING WORK
AND REPAIRS UNDERTAKEN

FOR A FRIENDLY SERVICE
PLEASE CALL NIGEL

Tel: 01234 822962

Mobile: 07778 800595

Email: nigel.wille@sky.com



R J GASCOYNE

THE PLUMBING, HEATING AND GAS COMPANY

Boiler changes, system upgrades, bathrooms, fault finding, servicing, maintenance, gas safety & landlord certificates, repairs, all heating, plumbing, drainage and gas work undertaken.

All from a friendly, reliable, trustworthy and professional engineer.

Contact Ryan on

TEL: 07980 209587

or EMAIL: ryangascoynephg@gmail.com



Uncomfortable with letting strange people into your home?

We are an **all-female** team of interior painters and decorators, working in the north beds village area. Fully experienced in hanging wallpaper, painting – including paint effects, restoring and repairing surfaces, wallpaper stripping and all general home decorating. We are all individually CRB checked, will provide references and testimonials showing the standard of our workmanship giving you peace of mind. We will come to your home to discuss your exact requirement, offer advice and produce a free written specification and quotation. We will then arrive on time, keeping disturbance to the minimum and deliver a quality job using only top quality materials.



OAKLEY ANGELS
The all-female painting and decorating team

- Trustworthy
- Experienced
- Guaranteed work
- Peace of mind
- High quality work at a reasonable price

Phone: 07989 778345
or: 01234 822499

TV Licensing scam emails

Scammers are sending fake emails using the official TV Licensing logo. The first email encourages the recipient to update their direct debit details.

The email might appear convincing, but the small spelling and grammatical errors are the first giveaway that it is a fake. The immediate request for your 'correct bank details' is also a red flag.



DVLA unpaid tax email

Scammers are also impersonating the DVLA to steal your personal information. The latest dodgy DVLA email tries to create a sense of urgency with the subject line: 'Vehicle Tax Status - Unpaid!' and uses the Gov.uk logo to appear genuine. The email goes on to say:

A DVLA spokesperson confirmed that it never asks for bank details over email, and that the only place customers can access genuine DVLA services is the Gov.uk website.

How to spot and report scam emails

Scam emails impersonating well-known companies can be hard to spot. The first thing to do is check is the email address that the message is being sent from. For example, TV Licensing sends its emails from donotreply@tvlicensing.co.uk or donotreply@spp.tvlicensing.co.uk.

If you hover over any links included in the email, you'll be able to see if they lead to an official website or not. Do not click these links. Instead, navigate to the company's website manually and log in to your account to see if you have any notifications. Scam emails should be forwarded to report@phishing.gov.uk.

New figures revealed victims of online shopping scams lost on average £1,000 per person during last year's festive shopping season.



The figures, which come from reports made to Action Fraud and analysed by the National Fraud Intelligence Bureau (NFIB), showed that shoppers across England, Wales and Northern Ireland were scammed out of £15.3m between November 2021 and January 2022, and that the age group most likely to fall victim was 19 to 25-year-olds.

Scams ranged from one shopper losing more than £150 trying to purchase a mobile phone on social media to another being duped out of more than £7,000 during an attempted online campervan purchase. Meanwhile, another victim lost almost £500 when trying to buy shoes on a social media platform, and a fourth lost £145 trying to make a similar purchase.

Top tips to shop online securely this festive season:

Action Fraud and the National Cyber Security Centre (NCSC) are urging online shoppers to protect their accounts, check before they buy, and use secure payment methods in order to stay ahead of the threat from criminals this shopping season:

- Protect your accounts: set up 2-step verification and use three random words passwords to prevent cyber criminals from gaining access to your shopping, bank or email accounts.
- Choose carefully where you shop: Research online retailers, particularly if you have not bought from them before, to check they're legitimate. Read feedback from people or organisations that you trust, such as consumer websites.
- Pay securely: Use a credit card when shopping online, if you have one. Most major credit card providers protect online purchases and are obliged to refund you in certain circumstances. Using a credit card (rather than a debit card) also means that if your payment details are stolen, your main bank account will not be directly affected. Also consider using a payment platform, such as PayPal, Google or Apple Pay. And whenever you pay, look for the closed padlock in the web address bar – it means your connection is secure.

For more advice on how to shop online securely this festive season, visit: <https://www.ncsc.gov.uk/guidance/shopping-online-securely>

Oakley Village Hall - have your say

Do you hire the Village Hall? Do you attend classes or functions there? Do you vote there?

Join our committee and have your say on how the Hall should develop and how it is run.

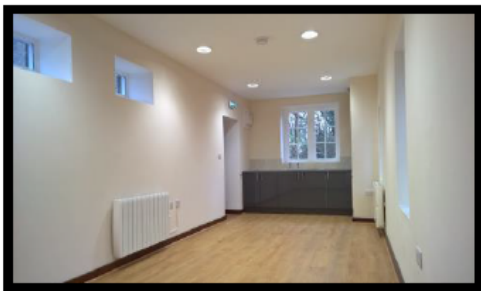
Find out more from our Secretary:
Ruth Bender | r.bender@cranfield.ac.uk | 07941 679204



HIRE THE OLD SCHOOL

Lovell Road, MK43 7RX,
Reg. Charity No. 1119074

- *Hall available for regular and one-off bookings at weekends*
- *Meeting Room available for regular and one-off bookings weekdays and weekends*
- *Meeting room now with self-contained facilities*



Please contact :
Bill Sellars 07980 745292
Email: billsellars@theoldschooloakley.org.uk
Web : www.theoldschooloakley.org.uk



SYDNEY HOWARD LOVELL MEMORIAL ALMHOUSES AT OAKLEY

The Lovell Homes is a small independent living community comprising two bedroomed bungalows and one/two bedroomed flats

Applicants over the age of 60 are invited to apply to go on the register of interest for a property - priority will be given to those with an agricultural or related background.

If you would like to be considered please visit the website www.lovellhomesoakley.co.uk

Or contact the Clerk :

Mandy Newton

On 07736 466965

Registered Charity Number : 200480

oakley *Motorcycle* club

Since the last magazine there has not been too much activity at Oakley Motorcycle Club. However on 25th August we had another cheque presentation to the East Anglian Air Ambulance this time for £1,226. This takes the total amount raised by OMC for the EAAA since they became our dedicated charity to a staggering £40,842!



On Sunday 2nd October we held our annual Memorial Ride which is held to remember all OMC members who are no longer with us. In total we had 43 bikes setting off from Oakley Club for a

leisurely ride around North Beds and Northants areas before stopping for coffee at Oundle then returning to Oakley Club for the traditional sausage and chips. Unfortunately this year one of our riders came off his machine on the return journey between Carlton and Stevington resulting in a quite serious injury. Thankfully, although still in hospital, he is expected to make a full recovery.

The next event in the calendar will be the very popular OMC Xmas Quiz on the evening of Thursday 8th December. Again all monies raised that evening will go to the EAAA. The following Thursday, 15th December, will be the OMC and OSSC Xmas Prize Draw which already has hundreds of



pounds worth of prizes up for grabs. All ticket proceeds from the draw night will again be donated to the EAAA.

Have a great Xmas and happy New Year

Roger "Baysie" Bays Chair - OMC

Since the last edition of the Newsletter Bedfordshire Classic Cars held their final evening of the year on 13th September which was exceptionally well attended.

It has proved to be an unbelievable year with many new visitors bringing along some amazing vintage and classic vehicles that we have not seen here before and to cap it all we only lost one evening all Spring and Summer which was down to field parchment rather than rain!

It has also been great to see more and more Oakley residents coming along with their families to enjoy the cars and hospitality of Oakley Sports & Social Club.

The team at Beds Classic Cars really look forward to seeing you all again next April.

Merry Christmas

Luke and the

Classic Car Crew

CLASSIC CAR MEET BEDFORDSHIRE





Oakley Sports & Social Club

Family & Sports Bar

CHRISTMAS OPENING HOURS

CHRISTMAS EVE: **12PM - 11PM**

BOXING DAY: **12PM – 11PM**

CHRISTMAS DAY: **11:30AM – 2:30PM**

NEW YEAR DAY: **12PM – 11PM**

FRIDAY 23RD DECEMBER

DANNI BENTLEY

LIVE SINGER FROM 4:30PM

