

THE RENHOLD MAGAZINE

FEBRUARY 2026





Grand India

RESTAURANT & TAKEAWAY

EST 1980

We are the only Indian Restaurant
in Bedford run by the same family for last 39 years.

39 TAVISTOCK STREET BEDFORD MK40 2RB

39 years and still counting.....

With more than 39 years of experience in the hospitality industry we the Grand Indian family run restaurant have a long and rich history with the dining industry to go along with our love and passion for food we offer a variety of authentic dishes freshly prepared daily by our experienced chefs. The restaurant offers an ambience second to none.

**Free Home
Delivery
Available**

OPENING HOURS
7 Days a week including
all bank Holidays
5.30pm - 11.30pm

Order Take Away On Line
www.grandrestaurant.co.uk
or call
01234 359 566

SPECIAL OFFERS

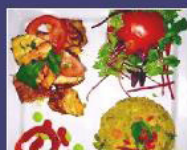
Book A Table of 4 and
get **£10** off your bill Book
a table of 6 & get **£15** off
your bill Book a table of
10 & get **£20** off your bill
*Must mention offer when
making reservation



GOURMET NIGHT

(Every Wednesday's)
Dining in only 5 Course
Meal, Any Start, Any Main
Dish*, Any Side Dish,
Rice or Nan & Coffee
Only **£10.99**

*Terms & Conditions apply



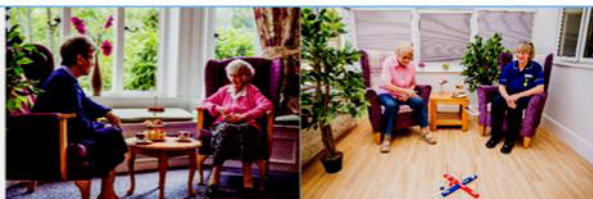
Contemplation

Bedfordshire
Care Group

NAPA
LIVING LIFE

Regulated by
Care Quality
Commission

carehome.co.uk



The Dementia Care Specialist - The People Who Care

Crossways Nursing Home

86 Hookhams Lane
Renhold
Bedford
MK41 0JX

01234 771694

www.contemplationhomes.co.uk

Nursing and Specialist Dementia Care

We have created a safe specialised environment for those living with dementia and nursing needs. Our staff are trained to a high standard using the latest evidence based person centred models for dementia specialist nursing. Activities, events and day to day living all contribute to a wonderful way of life within this fantastic setting.



FEBRUARY & MARCH 2026

| | | |
|---------------------|-------------|---|
| School dates | Spring term | Tuesday 6 th January - Friday 27 th March |
| | Half term | Monday 16 th February - Friday 20 th February |
| | Summer term | Tuesday 14 th - Friday 17 th July |
| | Half term | Monday 25 th May - Friday 29 th May |

| | |
|---|---|
| Notable Renhold dates & events | RVH (Renhold Village Hall) |
| | CH (Chapter House at All Saints Church) |
| | ASR (All Saints Renhold) |

| Date | Event | Time | Key | Pg |
|--|-----------------------|-------------|------------|-----------|
| Thursday 5 th February | WI Talk Arlo Arts | 7:30pm | VH | 15 |
| Monday 9 th February | Creative Club | 7:30pm | ASR | |
| Wednesday 18 th February (Ash Wednesday) | | 11:00am | ASR | |
| Friday 20 th February | Memory Café | 11:00am | Chapel | |
| Saturday 21 st February | Churchyard Clear – up | 09:00am | ASR | |
| Thursday 5 th March | Neighbourhood Plan | | | |
| Referendum | | 07:00-22:00 | VH | 20 |
| Saturday 7 th March | Bring and Buy Sale | 10:00-12:00 | CH | |
| Monday 9 th March | Creative Club 7:30pm | 7:30pm | CH | |
| Friday 20 th March | Memory Café | 11:00am | Chapel | |
| Saturday 21 st January | Churchyard Clear-up | 09:30am | ASR | |

Church Cleaning Rota

| | |
|---------------|-------------------------------------|
| 2nd February | Sally Pool, Peter Pool & Tessa Wood |
| 16th February | Jill Burows |
| 2nd March | Judy Wootton & Pauline Capel |
| 16th March | Jill Barrell & Ingrid Lennox |

Please be aware that all items for inclusion in the magazine - articles, notices of events, reports on activities, etc, need to be with the editorial team by the 12th of the month at the latest.

| | | |
|------------|--|---|
| Co-editors | Janet Goodman Amanda Quince Amy | Email: janetgoodman58@gmail.com Tel: 07948183164 |
|------------|--|---|

| | | |
|-------------|--|-------------|
| Advertising | Judy Wootton 24 Green End, Renhold | Tel: 871168 |
|-------------|--|-------------|

| | | |
|--------|---------------------------------------|--|
| Design | Ben Graham & Larissa Black | Email: ben@twenty-sixstudios.co.uk Email: larissa@twenty-sixstudios.co.uk |
|--------|---------------------------------------|--|

| | | |
|-----------------------|------------------------|------------------------------|
| Delivery & IT support | Ian McIver | Email: ianmciver38@gmail.com |
| Junior reporter | Isabelle Smith | Tel: 07968 568057 |
| Roving reporter | Pauline Capell | Tel: 771858 |
| Treasurer | Teresa Trangmar | Tel: 07788 402441 |

EDITORIAL — NEW YEAR EDITION

Amanda Quince

Stepping into the footsteps of giants like John Rogers, Rod Jones and Anne Grant is not going to be simple. Their footsteps are deep, expectations are high and comparisons are inevitable. The new Editorial Team, however, will endeavour to honour their legacy by moving forward with conviction and whilst staying true to their values of integrity, creativity, flair.

As a Parish, we have celebrated achievements big and small: from large community events such as the Scarecrow and Christmas Trees Festivals, Vicarage Garden Party, School Fete and Remembrance Sunday which brought neighbours and friends together, to the quiet acts of kindness that often go unnoticed but are the heartbeat of Renhold life. We've welcomed new families, supported one another through challenges, and worked hard to keep our community vibrant, inclusive, and resilient.

We have so much to celebrate in our first edition. Most immediately, we have the forthcoming Referendum at the Village Hall on our Neighbourhood Plan on Thursday March 6th. Please remember to USE YOUR VOTE, and if you are likely to be away from home on that date, please apply for a postal vote. This is the culmination of 5 years' hard work by 12 of our residents who have been so committed to the Vision, Values and Unique Character of this special place we call home. 2026 is the National Year of Reading—a nationwide campaign to promote reading for pleasure. Reading

is the gateway to lifelong learning, critical thinking and endless possibility. To that end, we have been visited by the Book Fairy and we are launching our first 'Renhold Poetry Please'. If you are a poet and would like to contribute one of your own poems, please let us know. We would be delighted to include it in our next edition. Further down the line, we will be asking you to recommend your favourite books. Please let us know if you have one that you would like to tell us about.

Albert Gurney, known as "Mr Renhold" when he was alive, was the go-to person for Renhold history. His Daughters Karen and Lynda have sent in a fascinating article which he wrote some time ago. If you have any historical knowledge of the Parish that you would like to share, please let us know.

We have special Parish events to look forward to such as our Annual Fundraising event with the wonderful Fynnus Fogg at the Village Hall on Saturday May 16th with all proceeds going to BOLD—a local charity that does so much to support adults with learning disabilities.

On behalf of everyone involved in creating this magazine: my fellow editors, all contributors and advertisers, staplers and deliverers, we thank you for reading and for supporting us. Here's to the many stories and anecdotes we will share, the memories we will make, and the continued strengthening of our Community Cohesion. Enjoy your read!

Frontispiece; Commemorative Photos by Janet Goodman. This magazine is printed by JCB Printers, GT. Barford - Tel: 01234 871861
Email: info@jcbprinting.co.uk The magazine is now available on the Renhold Parish Council website.

All content copyright © 2026 Janet Goodman. No unauthorised copying or reproduction.

The editorial team is not responsible for any opinions, errors or omissions in articles, notices or advertisements submitted to and included in this magazine. Inclusion of advertisements does not imply endorsement of any product or service offered.

THE RENHOLD MAGAZINE is published in accordance with its Privacy Policy, a copy of which may be obtained by application to the Editor (see 'Contact Details' above).



Martyn Smith

Arboriculturist

MS Tree Care

All tree and hedge work undertaken

37, The Briars, Kempston

Bedfordshire MK42 7RB

Tel: 01234 851235 Mobile 07712 050068

Email: mstreecare@btinternet.com

Quality made to measure blinds

Verticals, Venetians, Romans, Rollers & Perfect Fit

Free measuring service, free fitting

Top brands at competitive prices

Let the showroom come to you

Join the empire of happy customers!

Call
us now
for a free,
no obligation
quotation!



**EMPEROR
BLINDS**
Quality made to measure blinds

01234 347110

www.emperorblinds.co.uk
enquiries@emperorblinds.co.uk



ALL SAINTS' CHURCH SERVICES FOR FEBRUARY 2026

| Date | Time | Event | |
|--|----------------|---|---------------------------------------|
| Sun. 1 st February (Candlemas) | 11.00 | Parish Communion | Rev. Jennie Cappleman |
| Sun. 8 th February | 11.00 16.00 | Family Worship Evensong BCP | Canon Lynda Kilmas James Beauchamp |
| Wednesday 11 th February | 19.30 | Reading of Night Prayer (<i>online only</i>) | |
| Sunday 15 th February | 11.00 | Parish Communion | Ven Dave Middlebrook |
| Wednesday 18 th February (Ash Wednesday) | 10.00 15.30 | Holy Communion BCP Messy Church | Canon Lynda Caroline Coster |
| Sunday 22 nd February (Lent 1) | 11.00 | Parish Communion | Rev. Jennie Cappleman |
| Wednesday 25 th February | 19.30 | Reading of Night Prayer (<i>online only</i>) | |

Pastoral care:

Should you want to contact the Church about any matter or need a priest during the Vacancy, please contact the Church Wardens - Sarah (07765 6676969) and Alan.

Churchwardens

Alan Bloomfield
renhold.rev@gmail.com 01234 351162
Sarah Tomlinson 01234 347115

Secretary to PCC

Jill Burrows 07710228995

Treasurer

Andrew Coutts renholdtreasurer@gmail.com

Vergers

Keith Timms 01234 772605

Lay Vice Chair

Alan Bloomfield

Renhold All Saints Church Bellringers

If there are any enthusiastic church bellringers looking to join a band, please contact the Bell Tower Co-ordinator Yvonne Potter 01234 771495 for further details.

LETTER FROM ALL SAINTS' CHURCH WARDENS

Firstly, as this is our first opportunity of 2026, may we wish everyone a Happy New Year.

It is now 3 months since Rev Ian left, and all activities and services are continuing as usual, including baptisms, weddings and funerals. We are very grateful to clergy who are ensuring everything continues as planned. We had hoped for the speedy recruitment of a replacement for Rev Ian, but following our Vacancy meeting held on November 27th we now expect the Vacancy to last a few months longer than we initially expected. The meeting was attended by Rt. Rev Richard Atkinson Bishop of Bedford and acting Bishop of St Albans, The Venerable Dave Middlebrook Archdeacon of Bedford, Rev Helen Stewart Rural Dean of Bedford, CPAS our Patron, invited members of the community, congregation and PCC. The meeting set out the strategy for filling the role of Vicar. Firstly, we need to build a Parish Profile, this will form the basis of the advertisement that gets published inviting candidates to apply for the role. We are hoping that this will be finalised on January 17th, resulting in the role being advertised in February. Following a recruitment process this will lead to a replacement being installed in late summer early autumn.

Since our last letter we had a

successful Christmas programme of services that were very well attended, the most popular being the Crib service on Christmas Eve when approx. 150 adults and children enjoyed the Christmas story. A big thank you to everyone who helped or took part in any way across this busy season.

Next in the Church calendar is Lent which commences with Ash Wednesday on February 18th and culminates with Easter Day on April 5th . As usual all our services are listed in the Magazine or are listed on the A Church Near You website search for All Saints' Renhold. We are looking for volunteers to help with various roles within the Church such as Welcomers to greet people as they arrive, cleaners, flower arrangers, bell ringers for the brave. You don't need to be a frequent Churchgoer. If you would like to know more, please contact us. If you have any queries regarding any Church business, please contact either Sarah or myself directly. We are continuing to monitor the Renhold.rev@gmail.com email address, so please continue to use this to contact the church.

Sarah 01234 347115

Alan 01234 351162

Sarah and Alan Churchwardens

MOBILE LIBRARY TIMES FEBRUARY

| Location of Mobile Library | Time | February |
|-----------------------------------|---------------|----------|
| Renhold - Green End | 10:00 - 10:15 | 7, 21 |
| Lay-by - Salph End | 10:20 - 10:35 | 7, 21 |
| Renhold - Home Close | 10:40 - 10:55 | 7, 21 |
| Renhold - Ravensden Road | 11:00 - 11:15 | 7, 21 |
| Bedford Borough library's website | | |

Times will vary slightly due to traffic conditions, etc. For further information about the mobile library service please contact Kempston Library tel. 01234 276453

POETRY RENHOLD PLEASE

Becoming Auntie – Katie O’Pray

When you were born, I was feeble, in the winter of myself. I took to walking the frost for hours, with your pram to hold me up, singing aloud. My chest had too many unhealthy hollows, the opposite of soothing, but I held you anyway. It felt strange, wanting thicker arms. Mine were pathetic, once buckled &; I watched you bounce off the carpet. Said I’m sorry I’m sorry I’m so sorry to your mum. You couldn’t understand apologies so I could only show you, become safer, get big &; strong. You could feel my lap widening, more room, my hands less cold when I stroked your head. I softened everywhere. I followed your lead onto solid foods – sliced bananas &; Wotsits, things that are easy to chew. I couldn’t be sure what you were taking in, so I was always modelling kind hands in case. Gentle words, even as you slept. When you held out a chocolate button, I’d say ‘Ta’. Swallow, grin, rub my tummy. It taught us both a lesson – what we were willing to give up, out of love. Eating got easier once you’d grown into sandwiches, after you’d first managed my name, bending it through your smile, its syllables catching on your two teeth. I loved being that sound. It was summer then &; our nurses were pleased with how we were growing. We were no longer waking in the night, crying out to be fed.

First published in From the Ground to the Birdsong (Flipped Eye, 2024)

Biographical details

I studied English Language & Communication with Creative Writing at the University of Hertfordshire - where I was mentored by Wayne Holloway-Smith. I began making successful submissions to poetry competitions and magazines (such as the Magma Poetry Competition, the Oxford Brookes International Poetry Competition, bath magg).

My debut full-length collection APRICOT grew from an urgent need to articulate myself, carefully and artfully, during a tumultuous time in my life. It was published by Out-Spoken Press in 2022, and has since received an Eric Gregory Award.

I have worked as a creative facilitator for various organisations, including the Higgins Museum, the Panacea Museum, MK Lit Fest, English Heritage and CAMHS, among others.

I run a regular workshop group for adults in collaboration with Rainbow Bedfordshire, which is currently on hiatus while we’re finding a new venue!

It usually involves coffee and cake, a poem to discuss and a related writing prompt. We take inspiration from the source poems and spend time writing independently, before coming back together to reflect and feed back on the act of writing.

In 2025, I had the pleasure of bringing this group into collaboration with the Radical Education & Humanities Group (REHG) at the University of Bedfordshire. The pamphlet we developed and published, unbinaried, anthologises local writing across genres, exploring varied relationships with the concept of gender.





CRAIG FAIRLEY

**CARPENTRY / JOINERY /
GENERAL HOME IMPROVEMENTS
/ CURTAIN & BLIND FITTING**



07341558740



fairley.c91@googlemail.com

**State Registered Podiatrist
Nicki Granby (BSc Hons) MCHS**

**Chiropodist / Podiatrist
HPC Registered**



**Home Visits
Individuals &
Nursing Homes**

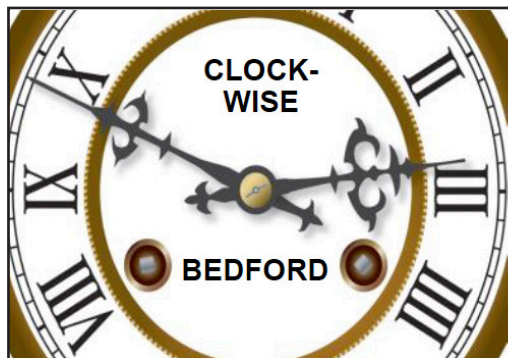
Flexible Appointments

t: 07773 652099

IS THIS SPACE FOR YOU?

RING JUDY WOOTTON

01234 871168



Clock-Wise

Specialist Clock Repair & Restoration

**112a Castle Road
Bedford MK40 3QY
01234 358486
clock-wise.co.uk**



**S&P
Antiques**

Cash paid for unwanted items

**Jewellery • Watches • Coins • Medals
Militaria • Coins • Cameras • Old Toys
Tamiya • Trains • Nintendo • Robots
Ephemera • Clocks • Enamel Signs**

FULL / PART HOUSE OR GARAGE CLEARANCE SERVICE AVAILABLE

Call now on: 07759 118741

AN ODE TO ANNE GRANT

Dr Grant, a chemist, with an analytic brain
Sits at her desk, writing editorial again.

'What shall I say? What should I do? Pray tell me what to think,
The last edition's here and I am nearly out of ink!

Working with Rod Jones was really such a blast
With his Latin innuendos and his wit so lightning fast.
Building up a fan base of loyal readers who
Waited month on month, agog, to read opinions new.'

The magazine has triumphed, its fame has spread afar
With villagers from Ravensden collecting mags by car!

Anne, retiring editor, you're a legend, it is true
Refining and redrafting, designing content new.

Improving flow, amending prose, fixing commas gone astray,
Searching sources, photos too, wrestling words that don't obey.

At last the draft is finished, fact checking is in place
You hand the baton on now to others in the race.
Your merry band of staplers will keep on going strong,
Their commitment is unwavering, their loyalty life-long.

The magazine deliverers will deliver, rain or shine
Thus honouring your legacy, the Parish's life-line.

THANK YOU FROM ANNE GRANT

Thank you all so much for the surprise party you sprang on me after the December magazine stapling session. I couldn't believe all the trouble you had gone to and no one spilt the beans! Thank you to Amanda for her amazing framed "Ode to Anne Grant" and to everyone for the flowers, the "18" banners noting that is how long I have edited the magazine, the cake, the gift voucher, and from Tony Ploszajski a copy of his amazing book of birds. I was quite overwhelmed at the thought, the preparation and the wonderful atmosphere. I have thoroughly enjoyed my time with the magazine and the interest it brought into my life, as well as the contact with so many interesting people. Please give Amanda, Janet, Amy and the team the same support and help to keep the Renhold magazine going as you have given me.



twenty-sixstudios.co.uk

**Effective design solutions to
suit your brands needs**

Helping your brand stay *fresher than ever*

Branding ■ Editorial ■ Print & Digital Media

Auction Sales & Valuations

Valuation, collection and auction service
of individual items through to complete
property and commercial clearances.

Call for a free no obligation quote or
email **info@peacockauction.co.uk**

SALE ENTRIES NOW INVITED

Antique & Modern Furniture • Clocks • Books • Ceramics & Glassware • Pictures & Prints • Bicycles
Jewellery & Watches • Collectables • Garage Tools & Equipment • Household Electrical Items • Office
Furniture & Equipment • Retail Products & Stock • Vehicles • Horticultural & Commercial Equipment
Building Materials • Garden Furniture & Effects

www.peacockauction.co.uk



W&H PEACOCK
AUCTIONEERS & VALUERS
01234 266366



Eastcotts Park,
Wallis Way,
Bedford,
MK42 0PE

GEORGE GILLESPIE ROOFING CONTRACTOR

Council Approved

Lead Work

Chimneys

Insurance Work

New Work



Strip and Retile

Facia and Soffits

Repair Work

Slating

All Guaranteed

41A, Portland Close, Bedford, MK41 9NF

Mob. 07961 986972

A JANUARY QUIZ

Pauline Capell

1. After which Roman god is January named?
2. What is January's birthstone?
3. Which Scottish poet is celebrated in January?
4. Which US shuttle disintegrated shortly after launching on Jan 28th 1986?
5. Which famous composer was born on January 27th?
6. What is the name of the full moon that occurs in January?
7. What is the Scottish New Year's Eve celebration called ?
8. Which Grand Slam tennis tournament starts in mid January?
9. Except in leap years January always starts on the same day as which other month?
10. Via which island did immigrants enter the USA from January 1892-1954?
11. In which year did the UK officially enter the European Economic Community
12. Who started his famous diary on January 1st 1860?
13. Which monarch died on January 22nd 1901?
14. Which member of the Royal Family has a birthday on January 9th?
15. Which 2 Zodiac signs are there in January ?
16. In which hemisphere is it summer in January ?
17. What is the common name for Galanthus navalist that flowers in January?
18. In January 2024 ITV ran a series called Mr ----- v The Post Office. What is the missing name ?
19. The world's first underground railway opened in Jan 1863 . In which city?
20. In Jan 1929 Pop Eye the Sailor Man comic strip began. What is the name of his girlfriend ?
21. Who did Marilyn Monroe marry in January 1954 ?

Photo by Tony Ploszajski



VILLAGE NAMES

Lynda & Karen Gurney

When having my last Covid Jab the doctor remarked "oh! you have a name for your house" (Gurndale). I explained that I live in a village and we were not originally given numbers and a postcode until quite a while after I moved in to my house in Woodfield Lane.

This set me thinking of all the lovely names people used to use for their farms and homes in the village including Castle Dairy Farm, Maskells Farm, Dairy Farm, Days Farm, Woodfield Farm, Home Farm, Vincents Farm, Appleby Farm, Church Farm, Tithe Farm, Pedleys Farm, Abbey Farm and also Sinfields Elm Farm which originally went up to Goldington Church. This was taken into the Borough to build Goldington Estate (up to Needwood Road and later Elms Farm Estate, Norse Road and the industrial units) up to the brook and the now boundary to the Borough.

Another interesting fact, the field that Elms Farm Estate and Norse Road was built on was 100 acres and reputed to be the biggest field in Bedfordshire at the time. Later as farms got bought up and made bigger for farm equipment many hedges were grubbed up so the landscape has completely changed.

House and Cottage names starting at Water End were Gadsby Cottage, The White Cottage, The Poplars, Green End Cottage, in Woodfield Lane there were The White House, Noah's Cottage, Sunnyside, Orchard Close and Willowdene, in Green End Rose Cottage which burnt down in the 70's, Little Thatch, Bethany, Woodpeckers,

The Old Post Office, Badgers Run, Top End included

The Old Forge, Kimberley, St Margarets Cottages, The School with the School House attached, in Church End were Church Cottages, Little Bean Close, the Council Houses 1 to 12 (the only numbered houses), Three Ways, and Honningham, Rose Cottage at the bottom of Pinchcut Hill, The Teasels and Charity Cottages. There is also Howbury Hall with Ladyfield and Stable Cottage on the estate.

Other properties villagers called by the names of people who had lived there a long time such as Wootton's, The Wares, Sharps Cottage, Harry Rawkins', Miss Harlow's, Miss Phillips', The Barbers', Edwards' Cottage and The Gillespies (this was a family and weekend home as the Gillespies were owners of The Railway Tavern or Hotel which was the last property on Midland Road, Bedford next to the entrance to the old railway station. Passengers coming off the trains used to stay there). There were also two Public Houses The Three Horseshoes and The Polhill Arms.

That's as many as I can remember. I am sure I have missed a few but I thought it would be good to remember these old names before they disappear to just a number and postcode. I have noticed that some of the farm names have been used for roads on the Norse Road estates, so at least these will be remembered by villagers in future and they will now know how their roads got their names.

Albert Gurney

RENHOLD VILLAGE CLUBS 2026 – 2027

| Group | Contact | Tel. | Day | Time | Place |
|------------------------------|---------------------|------------------------------|--|---------------------------------|------------------------------------|
| Bridge Club - No fear | David Israel | 078166685798 | Every Mon. & Fri. | 9:45 AM - 1 PM | St. Marks Church Brickhill |
| Chapel Coffee morning | Albert Browning | 772689 | 2nd Tues. | 10 AM - 12 PM | Renhold Chapel |
| Creative Club | Teresa Trangmar | 07788402441 | 2nd Monday | 7:30 PM - 9 PM | Chapter House |
| Dance classes | Sarah Higgins | Sarahhiggins18 @yahoo.com | Saturday | 9 AM - 10:30 AM | RV Hall |
| KT Yoga | Katy | 07977467967 | Every Thurs. | 7 PM - 8 PM | RV Hall |
| Luncheon Club | Yvonne Potter | 771495 | 2nd Wed. | 12:30 PM for 1 PM | Various call for information |
| Mini athletics | Ayrron Armstrong | 07985 520232 | Every Sun. | 9 - 11:30 AM | RV Hall |
| Pudding club for carers | Anne Grant | 771811 | 1st Tuesday | 2 PM - 3:30 PM | 4, Brookside |
| Reading group | Pauline Capell | 771858 | 1st Friday | 4 PM | 1, Church Close |
| Renhold pre- school group | Vicky Thompson | 771724 | | Term time | |
| Stitchers | Jackie Croot | 870271 | 3rd Thurs. | 10:30 AM - 12:30 PM | Chapter House |
| Table tennis | Ian Smith | 07989470093 | Every Mon. Every Wed. Every Fri. | 1:30 PM 10:30 AM 10:30 AM | Church Lane Community Centre |
| Tang Soo Do | David Roughley | 07591266614 | Every Mon. | 6:30 pm - 8 PM | RV Hall |
| Total Warrior Kickboxing | Dan Jackson | 07450235946 | Every Tues. | 5:45 - 8:15 PM | RV Hall |
| W.I. | Jan Tozer | 07855 222464 | 1st Thurs. | 7:30 PM | RV Hall |
| Yarn Craft Group | Marion Sutton | 217647 | Alternative Fridays | 10 AM - 12:30 PM | Wilden Village Hall |

RENHOLD WOMEN'S INSTITUTE NEWS

Our first WI meeting of the year began with true dedication as members ventured out in Storm Goretti to discover Who Would be a Beekeeper?

Waterproofs on and spirits high we were rewarded with a fascinating and thoroughly enjoyable talk from Sue Lang a national honey judge who certainly knows her bees. Sue guided us through what it really takes to keep bees and produce honey, explaining the difference types of hives, the variety of honey and the many challenges our bees currently face. It turns out beekeeping is not for the faint hearted.

The highlight for many was the selection of honeys for sale- a delicious opportunity to put theory into practice. It was a sweet start to our WI year in every sense, and as if on cue, the rain had even stopped by the end of the meeting.

Our next meeting is on Thursday 5th February at the Renhold Village Hall with Arlo Arts where everyone will have a opportunity to make an origami flower. All welcome.

For more details contact

Caroline 07545 340209

Jill 07730 748164

A DATE FOR YOUR DIARY...

Spring Minimarket/Coffee morning.
March 7th 10am-12noon.

Stalls to include Bring and Buy, Bric-a-Brac, Jewellery, Cakes and Cookies, Plants, Books and Jigsaws and Raffle. Please contact Jill, 01234 870461 or email jbarrell251@gmail.com

If you have items you could donate to the stalls, please let us know. Must be in good saleable condition. More details in the March issue.

NORTH BEDS RAMBLERS WALK (EVERY SAT.)

Please note change of start time for afternoon walks – Winter start 13:00

Come and join us for a walk. We walk every Saturday afternoon approx. 6 miles and Saturdays twice a month in the morning for approx. 12 miles.

Or try our "Ramble" on first Saturday morning each month – slightly shorter, slower pace

Contact; Margaret Sawyer 07780933729
Facebook; North Beds Ramblers
ramblers.org.uk/north-bedfordshire

February Walks

- | | |
|------------------|--|
| 7 th | AM "Ramble" Wilstead, 4.5 miles (Birthday Walk) PM Wilstead, 6 miles - Birthday walk |
| 14 th | AM Sutton, 12.5 miles PM Milton Keynes (TBC), 6.5 miles |
| 21 st | PM Haynes, 7 miles |
| 28 th | AM Husbourne Crawley, 6.5 miles |

CHRISTMAS TREE FESTIVAL 6TH/7TH

DECEMBER 2025

List of Entrants - In no particular order

Reading Group – In the Bleak Midwinter

Creative Club – In the Bleak Midwinter

Polhill Arms – The Poli and The Ivy

Donut Club – Twelve Days of Donuts

Victoria Houghton – Three Kings a Foot

Renhold WI – We Three Kings

The Burrows – The Ollie and The Ivy

All Saints Church PCC – Silent Night

Ella Mounter – Oh Holy Night

Sawford Family Dynasty – It Feels Like Christmas

Renhold Stitches – Oh Christmas Tree

Parish Council Hark the Herald Angels Sing All Saints Renhold Friends - Blue Tree

Messy Church – While Shepherds Watch their Flocks

Tony Ploszajski – Carol of the birds (Opportunity to see and buy his book)

Renhold Neighbour Plan (Neighbourhood Plan Working Group) – Angels from the Realms of Glory

Renhold Magazine – the Twelve Days of Christmas

Renhold (Primary) School – Little Stars shine bright

Natasha's Childminding – The Twelve Days of Christmas

Renhold's annual Christmas Tree Festival kicked off on Saturday 6th of December, at All Saint's Church and I had the opportunity to visit and have a look at the beautiful trees designed. This year was the 3rd year of this magical festival.

There were 19 entries, all of which were very beautiful and carefully crafted. The theme this year was carols and the 'Renhold Magazine' went with the carol 'The Twelve Days of Christmas' but with a twist, changing the typical lyrics to lyrics which reflect the team. 'On the 12th day of Christmas my true love gave to me 12 Renhold magazines, 11 wildlife photos, 10 dodgy jokes, 9 vicars' letters, 8 editorials, 7 local adverts, 6 chapel notes, 5 village clubs, 4 personal profiles, 3 carol singers, 2 fundraisers, and a front colour photo!' The tree was decorated with different front pages from the magazine from the very start.

Renhold School also put in a beautiful entry 'Little Stars Shine Bright'. This tree particularly stood out because of all the lovely colours used. Well done to all the participants that put in an entry, all the trees were beautiful.

There were lots of friendly helpers from the Renhold Church community. In order not to disturb the morning service we popped in afterwards to enjoy the delights of the Christmas Tree Festival. And what a delight it was! Refreshments and a wonderful selection of cakes all donated, were very much appreciated after our hard work. What we do know is that the festival was well attended, despite the weather. Our very grateful thanks go to the organisers, helpers including those kept busy in the kitchen and all exhibitors and attendees.

Photos and write up on Saturday Isabelle Smith | Sunday Janet Goodman and Amy



LA Auto Services

quality and value automotive services

For all your motoring needs:

Car Servicing & Repairs
 MoT Testing (incl. Class 7)
 Tyres, Wheels & Exhausts
 Bodywork Repairs
 Winter & Summer checks, etc.
 Free local collection & delivery
 (by prior arrangement).

Established
1983

Up to 50%
cheaper
than
main dealer
prices!

3 - 5 Shuttleworth Court
 Shuttleworth Rd
 Bedford, MK41 0EN

Tel: (01234) 354237 / 351431

website: www.laautos.co.uk

email: service@laautos.co.uk



FIONA'S MOBILE



ANIMAL CARE

FIONA PIERCY RVN
 REGISTERED VETERINARY NURSE

FIONA 07706 050593
 JAMES 07395 497376

FACEBOOK: Fiona's Mobile Animal Care
 EMAIL: fionasmobileanimalcare@gmail.com
 WEB: fionasmobileanimalcare.com


 Nurse Home Visit


 Pet Sitting


 Microchipping


 Pet Taxi


 Dog Walking


 Website

A DIFFERENT BREW TEAROOM AND CAFE — AND SO MUCH MORE

Have any of you come across a tearoom/cafe on 106 Clapham Road called A Different Brew? What a find it is. Your new magazine team went there back in November for our first ever meeting whilst tucking into a delicious afternoon tea. The tearoom is just one of an amazing variety of activities and opportunities, designed specifically for adults (18+) with learning disabilities. It is run by BOLD (Bedfordshire Opportunities for Learning Disabilities). The list of what is on offer is a long one such as drama, music, furniture restoration, art and crafts, cinema trips and days out to name but a few, and later in the year a seaside holiday or – wait for it – cruises to the Mediterranean and the Norwegian fjords. All of these take place within a supportive and welcoming community.

Over a cup of tea we talked to Jo, the Strategic Manager and Vanda, the Service Manager, and what came across was their passionate belief in what they and their team do to foster, enable and celebrate confidence, self-esteem and independence in their clients. This is a very special place where the person is seen and not the disability, and a whole world of opportunities are opened up within a safe, supportive environment.

The tearoom is open from 10am -3.00pm so why not pop in and experience this for yourselves. It comes highly recommended. For anyone new to this beautiful Tearoom. As you leave the Sainsbury's roundabout towards Clapham. A different brew is the large building on the left immediately off the main road.



Three Bedford bandmates: Jamie Catlett, Tony Wereszczynski and Bernard Hewitt met at Westfield School and they formed their band in the late 1960s. They enjoyed success in the early 70s with the release of their record, Roller Skating Baby. Since 1992 they have been playing a mixture of 60's to 80's music solely for charity and have raised in excess of £1,000,000. Their lead guitarist and singer, Tony, lives in

the Parish. They have been awarded the Queen's Award for Voluntary Service (QAVS), an equivalent honour to an MBE, in recognition of the huge amount of money they have raised. We are delighted to welcome them back to Renhold for the fourth successive year! Tickets are sure to sell out fast, so you will have to be quick off the mark!

A BOOK FAIRY & CRIB SERVICE



A BOOK FAIRY VISITS RENHOLD MEMORY CAFE

You may know the rhyme 'There are fairies at the bottom of my garden,' but Bedford can go one better than that as it has a real, live Book Fairy and, what's more, she lives in Renhold.

She came to the Memory Cafe for their Christmas gathering, to sprinkle a little festive cheer in the form of brand-new gifted books adorned with red ribbon to give away. It certainly brought a smile to the faces of the recipients with comments such as 'Can I really just take one?' and 'Books are my escape. I cannot wait to get home and start reading.'

The Book Fairy initiative encourages anyone to share the joy of reading and perform a random act of kindness by leaving a book they have enjoyed in a public place for someone else to discover.

It was founded by Cordelia Oxley, whose father owns an independent bookshop in Hampshire, and was launched globally in 2017 to mark International Women's Year. It now spreads the joy of reading in over 100 countries.

Should you wish to become a Book Fairy you will join a throng of famous fairies such as Emma Watson, Greta Thunberg and Kate Middleton, Princess of Wales who, during the Covid epidemic, placed copies of the book 'Hold Still' in various locations around London, which documented the UK during Covid in 100 photographs.

Many thanks to Jenny Higham and the Book Fairy movement for the generous gift of books that highlighted the power of the community, kindness and the shared joy of books.
(see opposite)

CHILDREN'S CRIB SERVICE

Our crib service has become a bustling Christmas Eve tradition. It is a vital community touchpoint that welcomes young families and the wider Parish community. Its focus is on accessibility and inclusivity. It is fun, interactive and noisy!

At its heart, the retelling of the Christmas story, it nurtures a spirit of unity and hope and encourages everyone to look beyond themselves to support one another throughout the year and not just for Christmas!

CLIPPINGS FROM CHURCH NEWSPAPERS

"Ladies, don't forget the rummage sale. It's a chance to get rid of those things not worth keeping around the house. Don't forget your husbands."

"The sermon this morning: "Jesus walks on the water." The sermon tonight: "Searching for Jesus."

"Miss Charlene Mason sang "I will not pass this way again", giving obvious pleasure to the congregation.

"The Rector will preach his farewell message after which the choir will sing "Break forth into joy."

"The senior choir invites any member of the congregation who enjoy sinning to join the choir."

"For those of you who have children and don't know it, we have a nursery downstairs."

"Don't let worry kill you - let the church help."

"The peace making meeting scheduled for today has been cancelled due to a conflict."

"At the evening service tonight, the sermon topic tonight will be "What is hell?" Come early and listen to our choir practice.
- Janice Green

STAGECOACH ROUTE 28A (FROM MARCH 2025)

Monday - Saturday

| | | | | | |
|--------------------------------|-------|-------|-------|-------|-------|
| Bedford (Beds), Bus Station | - | 08:50 | 12:50 | 16:30 | 17:50 |
| Renhold, Green End | - | 09:05 | 13:05 | 16:45 | 18:05 |
| Salph End (Renhold), Brookside | - | 09:12 | 13:12 | 16:52 | 18:12 |
| Ravensden, Horse and Jockey | - | 09:16 | 13:16 | 16:56 | 18:16 |
| Wilden (Bedford), Village Hall | - | 09:20 | 13:20 | 17:00 | 18:20 |
| Colmworth, School Farm | - | 09:26 | 13:26 | 17:06 | 18:26 |
| Little Staughton, Grays Grove | 7:30 | 09:31 | 13:31 | 17:10 | 18:30 |
| Pertenhall, The Old Vicarage | 07:35 | 09:36 | 13:36 | 17:15 | 18:35 |
| Keysoe, Hatch End | 07:43 | 09:44 | 13:44 | 17:23 | 18:43 |
| Bolnhurst, School Lane | 07:48 | 09:49 | 13:49 | 17:28 | 18:48 |
| Colmworth, School Farm | 07:52 | 09:53 | 13:53 | - | - |
| Wilden (Bedford), Village Hall | 08:00 | 10:01 | 14:01 | - | - |
| Ravensden, The green | 08:04 | 10:05 | 14:05 | - | - |
| Salph End (Renhold), Brookside | 08:08 | 10:09 | 14:09 | - | - |
| Renhold, The Green | 08:12 | 10:13 | 14:13 | - | - |
| Bedford (Beds), Bus Station | 08:27 | 10:28 | 14:28 | - | - |

No Sunday or Public Holiday service

The Bedford Stagecoach Bus number 5 Serving from Bedford Bus Station to Norse Road, Elms Farm area of Renhold is too large to print here. However, it can be downloaded from: stagecoachbus.com. This service operates Monday - Friday, Saturday & Sunday, and Public Holidays.

MEMORIES OF RENHOLD CHAPEL

I first remember going to Renhold Chapel Sunday school with my next door neighbours Blanche Carter and her sons (my Mother went to Church). This must have been during the war, as it was before my Dad came home from Germany, having been captured and spending 5 years in a prisoner of war camp. As an only child, at the time, I spent a lot of time with the Carter family. At this time most of the village children went to Chapel Sunday School, together with four grown up members, Walter Sharp, Mrs Kirby who played the organ, Walter Shorley and Arthur Gurney. We were split into four groups based on age

and told interesting bible stories relative to our age group. Mrs Kirby gave us all a token for attending which we saved and when we had collected so many (the amount I can't remember) we handed them back in exchange for a book or the ultimate a bible which I still have. Later on I used go to chapel on my own, cycling up to my Grandad's at The Green and walking up to the chapel often with Ken Gurney. Afterwards going home with Ken and seeing what he was up to in his little workshop, then round the corner for Sunday Lunch at my Grandad's. I would spend the afternoon with him, often walking the Renhold footpaths or cycling

around other villages. We often met Mrs Kirby cycling back for the afternoon service. She was only a little lady but rode a very big bike! It had a step on the back hub which she scooted along to get up speed then onto the step and hopped onto the saddle. She lived in Water End Cottages so made the journey to the Chapel three times every Sunday. A very dedicated member of The Chapel. The Sunday School children took part in celebrating the building of the Chapel,

'The Anniversary', with singing, readings and music during the Sunday afternoon service. We all looked forward to 'The Anniversary' tea which was usually the next day. After enjoying the tea there were sports events of rounders, french cricket and races which took place opposite the Chapel on Mr Joyce's field. We also went on Chapel outings which as far as I can remember was to Clacton and Wicksteed Park. Albert Gurney

BOROUGH COUNCILLOR REPORT – JANUARY 2026

Renhold Neighbourhood Plan FAQ's

What is a Neighbourhood Plan? A neighbourhood plan is a community-driven document that outlines goals for local development within the community. This could include policies on protecting our green spaces, improving rights of way, sustainable development that has been identified by the community, traffic issues and support for local businesses. Renhold's Neighbourhood Plan has been developed by volunteers with input from residents and external partners over a number of years. It is based on feedback and input from residents who have taken the time to respond.

Is it a way to see our village built on? Local residents, community organisations, the local authority and government officials collaborate in the planning process. A neighbourhood plan guides local policies and can impact decisions regarding any proposed developments.

What does it include? It tackles housing, transportation, public services, environmental concerns, and economic development that have been highlighted by the community.

Why should I bother? Because it provides a framework for development, helping to maintain the character of the village, manage land use effectively, guide infrastructure improvements, and enhance public services and amenities.

What do I have to do? Please take time to consider the proposed Neighbourhood Plan and vote in the referendum on March 5th, Renhold Village Hall.

Information Statement publication – Monday 26th January 2026.

Poll card dispatch and Notice of Referendum publication – Thursday 29th January 2026

Notice of Poll publication – Wednesday 25th

February Deadline to register to vote –

Tuesday 17th February 2026

Deadline to apply or amend a postal vote and

Postal vote pack dispatch – Wednesday 18th

February 2026

Referendum Poll Day and Count both at

Renhold Village Hall on 5th March 2026

Best wishes and thank you for your support.

Councillor Nicola Gribble

nicola.gribble@bedford.gov.uk

telephone 07955530234

RENHOLD PARISH COUNCIL JANUARY UPDATE

PROPOSED RESIDENTIAL DEVELOPMENT UPDATE- LAND BETWEEN HOOKHAMS LANE AND RAVENSDEN ROAD, SALPH END, RENHOLD

Please kindly note at the time of writing, this information is the most up to date known at present on this Manor Oak Homes development. This has been included again for continued reference and encouragement for engagement in the application at this stage: Manor Oak Home having communicated an intention to develop on this area of land in the parish. This land has come forward previously for large scale residential development, and was refused by the Borough Council, with the application taken to appeal, with the appeal at that time being dismissed. Renhold Parish Council previously reported after reviewing the application details below, engaged in the public consultation and had an informal meeting with site representatives in autumn 2025, to ask questions and provide clarity on items directly from the Parish Council to the site representatives. The site representatives took time to reflect on the Parish Council's informal feedback, and have requested a further meeting with Councillors. There has been another informal meeting arranged to take place shortly January 2026. As always the Parish Council will keep residents up to date on the latest information from that meeting via Parish Council meetings, and other usual platforms such as the next article.

A reminder - the site does have a current live application that has been submitted to Bedford Borough Council as the local planning authority, the details of the application are planning application number 25/01308/EIASCR, the application is a request for Screening Opinion in respect of proposed residential development at Land Off Hookhams Lane. This is not a planning application for development, it is an application to determine if an Environmental Impact Assessment Screening Opinion is needed to be undertaken on the site as part of the planning process. Such an impact assessment looks at environmental factors in great detail. The proposal is that there

is no need for a full environmental impact assessment for this site. Renhold Parish Council have made representations on why there is such a need for a full environmental impact assessment needed.

The Planning Officer, who is reviewing this application, Greg Logan, is an experienced local authority Officer. There has already been dialogue with Greg on this application, and this will continue going forwards as it is expected that in the near future there will be an application for residential development on this site. All details for the application 25/01308/EIASCR and any subsequent planning application on this site, or elsewhere in the parish, can be found on the Bedford Borough Council website at: <https://www.bedford.gov.uk/planning-and-building-control/planning-applications> As always, members of the Renhold community are encouraged to engage in the planning process and submit comments to applications to Bedford Borough Council. This can be done via email to planning@bedford.gov.uk

PLANNING INFORMATION REMINDER WHERE TO FIND IT...

If you wish to view current planning applications, previous planning applications, see planning decision notices or submitted comments on any application, then all information is retained on the Bedford Borough Council Planning Portal, which has an enormous amount of resources available to you. For more information do head here: <https://www.bedford.gov.uk/planning-and-building-control/planning-applications> The Parish Council are aware that the planning process can appear to be complicated. In order to try and explain more about the different planning systems depending on the planning matter being considered, the Parish Council decided to collate a guide document to try and assist residents. To access a copy of this document please head to: <https://renhold-pc.gov.uk/parish-council/minutes-agendas-other-documents> and you will see a document titled 'RPC Planning Guide June 2024' which gives an overview of planning. There is also a link to the Borough Council planning portal on the Renhold Parish Council

website as well for ease.

HAVE YOU THOUGHT ABOUT JOINING THE PARISH COUNCIL.....?

With all these local matters, it is a great time to think about joining the Parish Council, which currently has Councillor vacancies, and the Council would be very interested to hear from residents who want to get involved and have their say on village matters. You might:

- Like to see improvements to your local area
- Or have an interest in improving certain local provisions or services

- Have ideas on enhancing the village environment

- Want to be involved, when Bedford Borough Council allocate new housing through the Local Plan process

- Maybe are really concerned about traffic and highways safety in the village

- To learn more and wish to become involved in the local East West Rail project stakeholder group

The Council really would like to have greater representation to make sure your voice is heard. There is also lots of support available for new Councillors as well. If you are interested in taking a more active role in the village, supporting with parish improvements and have ideas on how to help move Renhold forwards, then the Parish Council would really like to hear from you. Do please make yourself known to the Clerk, Lizzie, parishclerk@renhold-pc.gov.uk or any current Parish Councillor whose contact details are in the Magazine.

NEIGHBOURHOOD PLAN PARISH COUNCIL GRATEFUL THANKS

The Parish Council would like to continue to express their thanks to the Neighbourhood Plan Working Group who have continued to work tirelessly to take this very important local planning policy document forward to help shape the future of Renhold. The document has been meticulously created with much valued input from the Renhold residents to shape the vision for Renhold going forwards, with the local referendum taking place shortly. Well done all involved.

PARISH COUNCIL MEETING DATES REMINDER

The dates for the coming year ahead have been set, the Parish Council will continue to meet at Renhold Village Hall on Wilden Road, with everyone most welcome to attend. Meetings start at 7pm, and will be held on: 26th February, April (to be confirmed), 14th May (Annual Council meeting), 18th June and 23rd July.

CONTACTING THE PARISH COUNCIL

Please remember everyone is welcome to contact the Clerk or any Councillors about local matters. A full list of contact details is available as usual in the Magazine directory, so do make a note. The best way now to contact Lizzie, Parish Clerk is on: parishclerk@renhold-pc.gov.uk for Parish Councillors the pattern is place their forename followed by @renhold-pc.gov.uk Parish Council meeting details, including dates, times and venue can all be found on the Parish Council website along with Parish Council meeting minutes and other useful documents, so do head to <https://renhold-pc.gov.uk> to take a look.

RENHOLD MEMORY CAFE

If you are affected by memory loss, our monthly Memory Cafe is a safe and supportive place to meet socially with others over a cake and a cuppa, and to join in our activities if you wish. We also reserve a separate table for carers, within full view of the people they support, where they can relax and exchange information. Just turn up at Renhold Baptist Chapel on the third Friday of the month at 11am. Our next meeting will be on Friday 20th February.

For more information contact Teresa Moon Rural Communities Champion 07930 999573 teresa.moon@tibbsdementia.co.uk

Office Contact Times: Monday to Thursday 10:00am - 4:00pm

Please note that the office telephone is not manned on Fridays or over the weekend.

There may be a delay in response during this time. Kindly leave a message, and we will get back to you as soon as possible. teresa.moon@tibbsdementia.co.uk

RENHOLD PARISH COUNCIL 2026

Clerk to the Council - Mrs Lizzie Barnicoat
PO Box 1548, Bedford MK44 5AX
Tel: (01234) 771702
Email: parishclerk@renhold-pc.gov.uk

| Councillor | Phone | Email |
|------------------|--------------|----------------------------|
| Susan Brunsden | 266281 | susan@renhold-pc.gov.uk |
| Fiona Cardinale | 07762 881009 | fiona@renhold-pc.gov.uk |
| Margaret Dean | 771520 | margaret@renhold-pc.gov.uk |
| Nicky Gribble | 771994 | nicky@renhold-pc.gov.uk |
| Darren Rayner | 07825 950673 | darren@renhold-pc.gov.uk |
| Julie Roberts | 07766 478974 | julie@renhold-pc.gov.uk |
| Paul Sawford | 870836 | paul@renhold-pc.gov.uk |
| Martin Warwicker | 07983 156845 | martin@renhold-pc.gov.uk |

Parish Council Meeting dates & venues for 2026

Renhold Village Hall;
February 26th - 7:00 PM
May 14th - 7:00 PM

For the most up to date information, including changes to dates or special meetings. Please refer to the Renhold Parish Council diary page. Residents are welcome to attend all meetings.

As always, if you wish to raise any ideas or make comments to the Parish Council, then please contact one of the Parish Councillors (see above or the new Parish Council website - renhold-pc.co.uk - for contact details) or contact Lizzie, Parish Clerk on 771702. Or, email parishclerk@renhold-pc.gov.uk

ANSWERS – JANUARY QUIZ

1. Samuel Pepys

2. Queen Victoria

3. Katherine Princess of Wales

4. Capricorn and Aquarius

5. Southern Hemisphere

6. Snowdrop

7. Mr Bates

8. London

9. Olive Oyl

10. Joe Dimaggio
1. Janus

2. Robert Burns

3. Challenger

4. Mozart

5. Wolf

6. Hogmanay

7. Australian Open

8. October

9. Ellis Island

10. 1973

RENHOLD CHAPEL

Chapel Preachers for February 2026

| Date | Time | Name |
|---------------------------|-------|-----------------------|
| 1 th February | 10:30 | Mr Mervin Popplestone |
| 8 th February | 10:30 | Mr Alan Dinnie |
| 15 th February | 10:30 | Mr Rex Andrews |
| 22 st February | 10:30 | Mr Geoff Hicks |

CHAPEL NOTES

The Lord's Prayer and us in 2026

I cannot pray 'our' if I am not in communion with fellow Christians.

I cannot pray 'Father' if I do not treat Him as such, on a daily basis.

I cannot pray 'Who are in Heaven' if all my interests are on earthly things.

I cannot pray 'hallowed by thy name' if I am not striving, with God's help, to be holy myself.

I cannot pray 'Thy Kingdom come' if I don't live as if I am within His kingdom now.

I cannot pray 'Thy Will be Done' if I am disobedient to His commands.

I cannot pray 'on earth as it is in Heaven' unless I am truly ready to give my life to God's service here and now.

I cannot pray 'give us this day our daily bread' if I am not also willing to work for it, and to share with my neighbour in need.

I cannot pray 'forgive us our trespasses as we forgive those who trespass against us' if I harbour a grudge against anyone.

I cannot pray 'lead us not into temptation' if I deliberately remain somewhere where I am likely to be tempted.

I cannot pray 'Thine is the Kingdom' if I live as if the world is my kingdom.

I cannot pray 'Thine is the power and the glory' if I am seeking power for myself and my own glory.

I cannot pray 'forever and ever' if all my attention is on daily affairs.

I cannot pray 'Amen', unless I honestly say, 'Cost what it may, this is my prayer.'

Reproduced with permission from The Parish Pump

QUALITY USED CARS WANTED

PLEASE CALL FOR A VALUATION – **07870553940** or **07469925860**

- PAYMENT BY BANK TRANSFER OR CASH
- VALUATION AND COLLECTION FROM YOUR HOME
- LOCAL FAMILY COMPANY

www.bedfordspecialistcars.co.uk

sales@bedfordspecialistcars.co.uk

Frosty Plumbing Co. is your local friendly service that offers all aspects of plumbing and heating including bathroom renovations and maintenance. If you want your plumber to take as much pride in his work as you do in your home, then please get in touch:

Phone – 07534 150261

Email – Frostyplumbingco@gmail.com

Search Frosty Plumbing Co. on Facebook

Search Frosty Plumbing Co. on Instagram

Fully qualified and insured for peace of mind!



Window Cleaning

Using purified water technology safe working practices and fully insured.

www.swswindowcleaning.co.uk

Steve White Services,

59, Church End, Renhold,

Bedford, MK41 0LX.

Tel: 01234 772327 (Ans m/c)

Mobile: 07731466553

E mail

stevewhite@swswindowcleaning.co.uk

PLEASE LEAVE NAME, ADDRESS
AND PHONE NUMBER



We teach safe driving for life, not just for your Test

DSA Approved Driving Instructor (Car)

IAM Registered Instructor

Grade 'A' Instructor

CRB Checked

Free Points of Reference guides included

Based locally, a calm, patient and friendly instructor specialising in nervous pupils

Contact Geoff on 0786 166 4128 or visit us at

www.gemdrivinginstruction.co.uk

Please scan QR Code below for details



*Bespoke floral creations for any occasion
designed and made for you by*

The Flower Angel

*Please call or text your Renhold-based florist
on 07519 721520*





Supporting People to Live a Healthier Lifestyle

- ♦ One-to-One Training
- ♦ Free Consultation
- ♦ Private Fitness Studio in Renhold
- ♦ Nutritional Support
- ♦ Health & Wellness Advice
- ♦ Regular Fitness Reviews

"Having been involved in the fitness industry earlier in my career I have returned with a particular interest in supporting people to live a healthier lifestyle and look after their physical and mental wellbeing."

Contact Melissa for an initial chat on 07917 181008
or email melissathealthandfitness@hotmail.com

Melissa - Your Personal Trainer
 [melissayourpt](https://www.instagram.com/melissayourpt)



Stunning, seasonal cut flowers grown in the
walled garden at Howbury Hall in Renhold

- Regular doorstep deliveries for the home
- Bouquet deliveries
- Wedding and event flowers
- Sympathy tributes
- Wholesale flowers for local florists
- Garden visits and workshops when permitted

Beautiful flowers that don't cost the earth

howburyfarmflowers.co.uk

e: flowers@howburyfarmflowers.co.uk

Tel: 07870 517803 or 07786 038891

Henry's Garden Services

Your outdoors taken care of

Just "Leaf" it to me!

Garden

Home

Property Maintenance

Please call, text or email: 07715 972090

Podiatry Visiting Service

Lillian Stearn

- MRCPod Bsc (Hons)
- HCPC Registered
- Royal College of Podiatry Member
- 30 years NHS experience

Home visits and Residential Care Homes

07527877171

lstearn70@gmail.com





Baobab Social Care Ltd
EXCELLENT CARE AND SUPPORT SERVICES

At Baobab Social Care we provide excellent care

- | | |
|--|----------------------------------|
| ⊗ Practical Support | ⊗ Emotional Support |
| ⊗ Care & Compassion | ⊗ Personal Care |
| ⊗ Peg Medication & Feed | ⊗ Medication |
| ⊗ Meal Preparation | ⊗ Appointments |
| ⊗ Assistance with Light Householder Duties | ⊗ Sitting Service/ Companionship |
| ⊗ Days Out | |



BAOBAB SOCIAL CARE

For more information Please contact:

Telephone: 0800 009 6313

Email: info@baobabsocialcare.co.uk

Plumbing, Heating and Air Conditioning

Mobile: 07717 756677

Contact: Roger Flanagan



Local, family run business

Domestic & Commercial

Office: 01234 771396

**R.J.F. Plumbing, Heating and
Mechanical Services Ltd**

Email: info@rjf-plumbing.co.uk



LOCAL LOCKSMITH

07860482994

**SPECIALIST IN UPVC
& COMPOSITE DOORS**

SAFES - LOCKS - HANDLES

ANTI SNAP CYLINDERS - WINDOWS

REALIGNMENT & SERVICE

FREE SURVEY AND QUOTE

☎ 01234 262625

GEMINI
LOCK & SAFE



WEBSITE - WWW.GEMINILOCKANDSAFE.CO.UK

EMAIL - INFO@GEMINILOCKANDSAFE.CO.UK

RENHOLD VILLAGE DIRECTORY

Bell Tower Co-ordinator

Yvonne Potter 01234 771495

Churchyard Volunteers

Teresa Trangmar
07788 402441

Football Club

Mr K. Harlow
01234 871178

Magazine Co-Editors

(All emails to)

Janet Goodman
janetgoodman58@gmail.com
Amanda Quince
Amy

Messy Church

Caroline Coster
carolinejcoster@gmail.com

Neighbourhood Plan

Amanda Quince
01234 870704

Preschool Group Term Time

Vicky Thompson
01234 771724

Renhold Chapel

Albert Browning
01234 772689

Renhold School

01234 771724

Renhold Village Agent

Lydia Wright
0800 039 1234

Renhold Village Hall

Bookings

07523 66232

Women's Institute

Caroline McEwen
07543 40209
Jill Barrell 01234 870461

Borough

Bedford Hospital

01234 355122

NHS Direct (non-emergency medical helpline)

111

Bedford MP

Mohammed Yasin 01234
346525

Borough Council

01234 267 422

Borough Councillor

Nicola Gribble
07955 530234

North East Bedfordshire MP

Richard Fuller
01767 33385

Police

999, 101, or 01234 841212
PC Abi Holt, PC Vito Napoli
PCSP Stephen Tarbella
PCSO Kim Roberts

Samaritans

113123

Tibbs Dementia & Rural

Community Champion

teresa.moon@tibbsdementia.
co.uk
07930 999573



Muskett Flooring

Carpets, Wood, Laminate, Vinyl & LVT Ltd

w: www.muskettflooring.co.uk

e: muskettflooring@yahoo.com

mob: 07788 952720

tel: 01767 641008

Unit 20, High Barns Farm,
Roxton, Beds, MK44 3ET

Domestic & Commercial Installations



Your local carpet fitter



The Polhill Arms Pub, Renhold

Cosy and full of character, we offer a warm welcome to all.

Whether you're popping in for a refreshing pint, catching up with family & friends or joining us for one of our regular monthly events, you'll always feel at home.

Family & dog friendly | Weekly food trucks | Kitchen open Thurs - Sun | Regular events



A warm welcome awaits

25 Wilden Road, Renhold, Bedford, MK41 0JP 01234 771398



Odell & Son Plumbing and Heating

Local family run business, same day service, no job too small, O.A.P. rates

Gas leaks, boiler breakdowns, installations & servicing.

Power flushing, cookers & fires fitted & fixed, bathroom installations, toilets, ball valves, water mains, burst pipes, showers, new radiators & outside taps.

Special Offer:

Fixed price

Boiler Service only £60

**Gas safe
registered**

37, Ridge Rd.

Kempston MK43 9BS

Tel: 01234 855007

Mobile: 07795 821595

SJB DECORATING SERVICES

- DOMESTIC & COMMERCIAL
- INTERIOR & EXTERIOR
- WALLPAPERING SPECIALIST

20 Church End, Renhold
Bedford MK41 0LU
01234 772024
07900 257737
sjbdec@hotmail.co.uk



*Supplying Heating Oil
to Renhold for over 50
years*

Kelly McLoughlin, Depot Manager

01234 822488



Formula

KITCHENS | CABINETS | BESPOKE CARPENTRY

SPECIALISTS IN KITCHENS, STORAGE SOLUTIONS,
WARDROBES + BESPOKE CARPENTRY & JOINERY

07802 207434

info@formulacarpentry.com

facebook.com/formulacarpentry



**ALBION
TREES**

01234 327 604
07397 920 589
info@albiontreesurgeons.co.uk

free quotes

**Tree felling,
Reducing,
Pruning,
Hedge trimming,
Stump grinding**

PC Upgrade Computer Repairs

Computer Repairs, Service & Upgrades
No problem too big or too small

**Windows/Mac/Smartphones/Printers/
Networking**

Wifi Setup/Virus removal/ Data recovery

Bedford & surrounding villages

- Established 1999 in Keysoe

Call Richard or Sammy

0771 289 3771/01234 709411

tech@pcupgrade.org

www.pcupgrade.org

Facebook/pcupgrade

Renhold Village Hall for Hire

Facilities:

- Main Hall with capacity of 120 seated
- Meeting Room for smaller gatherings
- Fully equipped kitchen
- Servery & bar area
- Air Conditioning throughout
- Ample parking 43 + 2 disabled spaces
- Wheelchair access and disabled toilets
- Outdoor seating area with tables
- Staging, projector and screens
- Baby changing facilities

Perfect for:

- Training and Meetings
- Workshops and Lectures
- Children's Parties
- Local Community Meetings
- Local Clubs & Societies
- Corporate Events
- School and Educational Events
- Wedding Receptions
- Celebrations of Life

**Accessible - Local - Convenient - Excellent Facilities - Free Wi-Fi
Flexible Booking Options and Competitive Rates**

Call 07523 667232 to enquire or send us an email at renholdvillagehall@yahoo.com

Please visit our new website: www.renholdvillagehall.com

PELL'S FARM SHOP & NURSERY

RENHOLD RD,
WILDEN, MK44 2PT
Open 7 days / wk

Visit our friendly family-run farm shop for a huge selection of:

- vegetables grown here on our farm
- milk, bread & cakes
- potatoes & fresh fruit
- cheeses, meat and pies

And, in our nursery, a massive range of:

- bedding plants, trees & shrubs
- coal, logs & bird food
- perennials, composts
- pots & garden essentials

... and all at extremely competitive prices!



We cover
all aspects
of Heating,
Plumbing and
Gas Work

**Domestic and Commercial Call:
01234 988522**



HATTERS

HOME & STYLE

532 GOLDINGTON ROAD, BEDFORD
HATTERSFURNITURE.CO.UK



SOFAS • DINING • BEDS • FLOORING • FITTED KITCHENS & BEDROOMS