



Oakley Newsletter



Autumn 2024

*** Number 100 ***

Oakley Show 8th Sept

New Village Quiz Dates

OSSC News

OYC Assistant Vacancy

Village Defibrillators Locations

Live Music in Church 19 Oct

Remembrance Sunday Details

Bellringing Opportunities



Front Page Picture : Buff-tailed bumblebee on a hollyhock flower

Photographer : Shelley Eden

The Oakley Newsletter

is published quarterly by Oakley Parish Council and delivered by parish councillors free to every house in Oakley – about 1,000 copies.

Opinions and information

in the Newsletter, both text and adverts, may not be endorsed by the Editor or the Parish Council.

Next issue

Final copy date for the
Winter issue is 22nd Nov 2024
The publishing date is 1st Dec 2024

Advertising rates

Colour Advertisements
Quarter page: £30

Half page: £60

Whole page: £120

Four consecutive quarter page adverts -
discount 10%

Black & white advert rates are available
upon request.

Loose inserts, any size up to A4: £100
Invoices will be issued by Ann Paice, with
payment to Oakley Parish Council.

Editor

Bill Chalker
13 Bevery Close
Oakley
MK43 7SH
07789 997733
wrecklatch@gmail.com



Printers

White Hart Press
58a York Street
Bedford MK40 3RL



Hello Children

look out for
Ten more
little ones



Parish Council News

Summer 2024

Welcome to the late summer into autumn edition of the Oakley Newsletter. I want to give a big shout out to Bill Chalker for all the hard work he puts in to design and publish the Oakley Newsletter. It gives such good a representation of our village, reflects what has been happening and has something for everyone. Thanks Bill.

The Parish Council has been attending to village business, as you would expect, and you can follow all that we do by looking at the minutes on the notice board outside the Post Office or on the village website which is www.oakleyvillage.co.uk

Our Environment

Grass cutting continues to be high on our agenda. The incessant rain has certainly not helped, but we have asked the contractors to pay more attention to the consistency of the cut, strimming and tidying up. Thank you if you have contacted any of us about the grass cutting. It is not an easy job to do and the challenges are not confined to Oakley.

We want our village to look nice and smart and that is what we are endeavouring to achieve. I know some residents also contribute to the general tidiness of the village through some mowing, weeding or strimming so thank you to you as well.

Just to let you know any villager can register as a Community Champion with the Volunteering Team at Bedford Borough Council, who can provide equipment for litter picking directly to your door. Please contact volunteering@bedford.gov.uk or search 'community volunteering' at www.bedford.gov.uk to find out how to register.

The Council will provide a litter picker, bag hoop, bags and hi-vis jacket. Volunteers are contacted on a monthly basis to provide a rough estimate of time spent volunteering and the number of bags collected. If this is of interest to you then please make contact.

Continued on page 3

OAKLEY PARISH COUNCIL

PARISH CLERK

Ann Paice

31 Radwell Road
Milton Ernest
Bedford, MK44 1SH.
07873 887370
parishclerk@oakleyvillage.co.uk

CHAIR

Sara Fardon

61 Lincroft.
824516
sarafardonopc@gmail.com

VICE-CHAIR

Robert Saunders

College Farm.
07770 232469
rjsaunders5591@gmail.com

Jane Walker

(Parish and Borough councillor)
11 Dewlands
07952 879587
jane@janewalker.co.uk

Jonathan Abbott

(Parish and Borough councillor)
13 The Furlong
950868
jonathan.abbott71@icloud.com

Pat Olney

33 Station Road.
824384
pat.olney@btopenworld.com

Phyllis Jones

35 Ruffs Furze 910187
phylmaj@gmail.com

Paul White

20 Reynes Drive. 825472
paulwhite20rd@gmail.com

Carla Bays

43 Reynes Drive
07786 363770
carla.millar@hotmail.co.uk

Richard Worker

Oak Lodge Church Lane
826111
richworker@hotmail.co.uk

Thomas Saunders

Oakland House Westfield
Road 07902 146751
tsaunders678@outlook.com

Caroline Worker

3 Parsonage Close
07765 077114
caroline.worker@outlook.com



Bedford Community Policing Team

Coffee With a Cop

Have you heard of Coffee with a Cop? Your local Safer Neighbourhood team will be holding Coffee with a Cop at Milton Ernest Garden Centre. You have the opportunity to go and raise any concerns you may have and to find out how the Police are tackling issues in this area. Dates for the next two months are 28th September and 26th October from 10.00am - 12.00.



New facilities at Lincroft School

Three members of the Parish Council joined the celebration at Lincroft School recently to show the new dining facilities and dance studio. The dining facilities are very comprehensive and I can see how great it must be to eat lunch there. A photographic essay was on display to show the building of the facility and record its development. The dance studio upstairs was breathtaking; a light and airy space, just making you want

to dance. We were treated to some impressive dance and music routines from pupils. It is a great facility for current and future students.



Finally, a few dates for your diary



8th September - Oakley Show

A great opportunity to promote a wide range of skills and talent from across the village so do not hesitate to make and create. Do enter the relevant classes and share and show off your produce, cakes, jams, photographs, chutneys, bakes, arts and crafts! The auction at the end is great as well and is a lovely way to be able to sample these delights.

12th October - Community Litter Pick

More information to follow, so please hold the date. No need to wait until then though if you see some litter today! Thankyou especially to everyone who picks up litter on a regular basis already.

10th November - Remembrance Ceremony

Services will be held at 9.30am at St Mary's and 10.00 at the Methodist Church. These will be followed by a joint ceremony at the War Memorial at 10.50am.

7th December - Christmas Lights

Finally, please reserve the 7th December for switching on of lights, community singing and some seasonal fare for that all important time of year. Full details to be available nearer the time.

Come and join us at the Parish Council Meetings

Do not forget residents are always welcome to come and observe Parish Council meetings, or to speak at the open session if you wish to bring something to our attention.

Thank you

Sara Fardon

Parish Clerk's Working Hours

The Parish Clerk is currently working from home Monday, Tuesday and Wednesday mornings. She is also in the Old School Meeting Room (at the rear of the building) on Thursdays between 10.00am and 2.00pm if anyone wishes to visit in person. She does not work on Fridays but any messages or emails will be picked up on Monday.

Borough Council News

Customer service centre



The Customer service centre, which is located in the old Civic Theatre on Horne Lane in the town, has been reopened for anyone to drop in for advice on any of the council's services. If you need help with housing, council tax, to report a high-ways or environmental issue, to look at planning applications or just for help with accessing the council's digital services, there will be someone on site who can advise you. There is no need for an appointment.

Eventually we are hoping to reintroduce the Tourist Information centre to the Customer Service centre, but in the meantime, they will have a leaflets available with information on local activities and attractions.

Bedford Town centre improvements

Debenhams building:



The purchase of the old Debenhams building is now complete and the stores signage both internally and externally is being removed in preparation for the Borough councils "meantime use". Eventually, when the purchase of further units in that area have been finalised, there is a plan for a complete redesign of that part of the town. This will include small retail units, the Central library rebuilt on one level, a courtyard eating area and an extended Corn Exchange. Until the full plan can be achieved there have been several proposals on the use of the Debenhams building for

the shorter term. These should require minimal capital spending but if you have any ideas on what the building could be used for, Mayor Tom Wootton would be very interested to hear about them.

Harpur Square:

Harpur Square, between the Harpur Centre and the Harpur Suite, has had a makeover. The stepped area and raised planters have been removed to give a flat, smooth area that will be much more flexible and allow for more events. In addition a new flag pole has been installed so that flag raising events can take place in a much safer, pedestrian only area instead of currently on the road by the old Town hall building.

Midland Road:

Work has begun on the improvements to Midland Road to help regenerate the area and give an improved access into the town from the railway station.

Greyfriars:



The plan for improvements to the Greyfriars area, is now available. The plans which are being led by Bedford Pilgrim Housing Association, will include converting the old police station into flats, removing the roundabout nearest the bus station and taking down the remaining tower blocks and replacing them with more energy efficient, family housing. Although this scheme is being managed by BPHA, the plans include a mix of houses for sale and to rent.

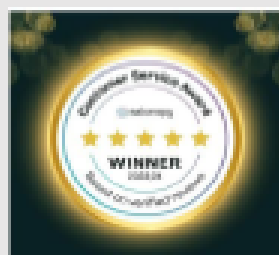
Town centre Family hub:

The new Family hub in the town centre is moving on apace. It will be located in the old NatWest building near the bus station so will be easily accessible by car or bus. It will host a number of advice services and parent groups for families of all ages plus we are hoping to be able to host groups for teens, all in a relaxing and safe space. We hope to be able to announce an opening date soon.

Continued - Page 6



HAZEL KAYE HAIR,
BEAUTY & FACIAL
AESTHETICS



Hazel Kaye

Voted No 1 Salon in the UK

We offer an exceptionally highly trained and expansive range of Stylists and Beauty Therapists from Managers to Rising Stars.

Hair Menu

Wella Colour Experts
Restyle
Wash, Cut & Blow Dry
Children's Hair Cuts
Beauty Works Hair Extensions

Barbers

Wash, Cut & Finish
Gents Skin Fade

Beauty Menu

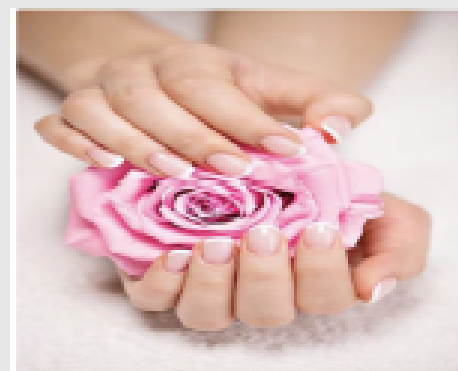
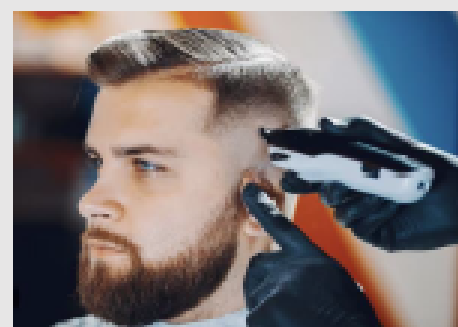
Skincare Specialists
Luxury Facials
Make Up Artists
Gels, Manicure & Pedicure
Waxing
Lashes & Eyebrows
LVL Lashes
Relaxing Massage
Tanning
Ear Piercing
Pamper Days

Weddings

Make Up, incl Bridal Hair Ups

Facial Aesthetics

Regular Private Clinics Held



Book Appointments/Shop Online

Exceptional Savings

on Premium Hair, Beauty & Fragrance Brands

including Savile Row Men's Fragrances & Grooming, Maison Charel Vegan Fragrances & Seksy Beauty, *designed at Hazel Kaye*, plus Gift Vouchers - the perfect gift for those special occasions.

40 High Street, Oakley, Beds, MK43 7RG

Spacious salon/Free Parking

Tel:01234 826502,e:hazel@hazelkaye.com www.hazelkaye.com



Borough Council News

- Continued

Bedford to Milton Keynes Waterway

Mayor Tom Wootton has at last been able to sign the agreement which will allow the commencement of the Bedford to Milton Keynes Waterway project (Bedford end). Although the council has been given money by developers to spend on this waterway it is not enough to build the complete Bedford section. The mayor has taken the decision to start it so that the land is preserved and to develop the green infrastructure along the route, giving a new leisure cycleway between the two areas. This also demonstrates the Borough council's commitment to the project which will help when applying for further grants.



Universal Studios

The team from Universal studios continues to meet with government departments to move the project on. It has been delayed slightly by the change of government ministers, but we are still hopeful that we will hear by Christmas that the project has been given the green light to proceed. In the meantime, the council is working very closely with everyone involved. The Mayor has allocated offices at Borough hall to the project to allow the team to meet with government officials whenever they need to. Planning permission will now come from the government rather than the council as it has been deemed a major project which will, ultimately, benefit the whole UK economy.

Jane Walker

If you need any further information or assistance with issues at the council, you can contact us on

Jane Walker

Email: jane@janewalker.co.uk

07952 879587

Facebook: Cllr Jane Walker

Jon Abbott

Email: jonathan.abbott71@icloud.com

07784 549180

Facebook: Clapham & Oakley Liberal Democrats

News from the Tower

The Oakley Band of Bell Ringers at St Mary's Church is part of the Bedfordshire Association of Church Bell Ringers. The Bedfordshire Association was established in 1882. There are 102 towers within the Association, although 18 of these do not contain ringable bells. Sometimes that is because the bells have fallen into a state of disrepair or because the building they are in is no longer a church.

The majority of the towers in the Bedfordshire Association have a ring of 6 bells, like we have at St Mary's Church. Only three towers in the Association have a ring of 12 bells and one of those is St Paul's Church in the middle of Bedford. During the River Festival we hosted a couple of tours of the tower at St Paul's including a demonstration of bell ringing. 12 bells, rung well, sound lovely!

The Oakley Band of Bell Ringers practice on Friday evenings from 8pm to 9:15pm and ring on Sunday mornings before the services at St Mary's Church. **New members are very welcome!**

If you would like to come along on a practice night to see what it is all about and to have a go, please contact our Tower Captain, Bill Sellars on 07980 745292 or email the-sellars@btinternet.com.

The Bedfordshire Association Annual Report proved useful for rescuing an Elephant Hawk Moth Caterpillar when I was on the way to bell ringing practice!

Shelley Eden





HARVEST SERVICES

Sun 22nd Sept 10.30am: St Mary's

Sun 6th Oct 10.30am: Oakley Methodist Church

both followed by a bring and share lunch. These are always joyful events and all are welcome to give thanks for God's goodness to us. Cash or non perishable food donations for the Foodbank welcome.



REMEMBRANCE SUNDAY

This year Remembrance Sunday falls on 10th November. There will be services in both churches at 9.30am St Marys and 10am Oakley Methodist Church, followed by a joint Act of Remembrance at the village War Memorial at 10.50am.



Messy Church for All restarts on Tues 17th Sept at 3.30pm at Oakley Methodist Church continuing 15th Oct, 19th Nov & 17th Dec

Our weekly Messy Church sessions will also start again as the school term begins in Sept

St Mary's Oakley starts Thurs 5th Sept 10- 11.45am (incl snack)

St Owen's Bromham starts Mon 9th Sept 11.30am—1.30pm (incl lunch)

Coffee Stop
Every Thurs 10.30am- 12 noon at Oakley Methodist Church. All welcome!

SERVICES OF REMEMBERING

During October we will be holding three 'Remembering Services' to remember and give thanks for loved ones who have died. Everyone is welcome to any service:

St Owen's Bromham Sun 13th Oct

St Mary's Oakley Sun 20th Oct (Joint with Oakley Methodist Church)

St Leonard's Stagsden Sun 27th Oct

all at 3pm and followed by refreshments. If you would like the name of a loved one remembered please call Graham or Hilarie.



CONTACTS

St Mary's Oakley (C of E): Rev Catherine Wilson 01234 825665 vicar@bromhambenefice.org

Church Wardens: Hilarie Worley 262166 & Graham Palmer 07710 462535

Administrator: Sarah Smale administrator@bromhambenefice.org Website: www.bromhambenefice.org

Oakley Methodist Church: Rev Paulette Tedd 07591 139940 paulette.tedd@outlook.com

Church Steward: Jeanette Letch 825204

DAVID JAMES



WWW.DAVIDJAMESKITCHENS.CO.UK



MANUFACTURE DESIGN INSTALLATION

We are a local manufacturer of beautiful kitchens. We sell direct to save you money. The factory showroom has an extensive display of different styles.

SAVINGS ON ALL KITCHENS

& Up To 25% Off Top Brand Appliances

01525 722230 PULLOXHILL BEDS MK45 5EU

WHITE'S

Lawnmowers & Garden Machinery

Sales ~ Service ~ Parts ~ Hire
Briggs & Stratton Service Centre

STIHL **STIGA** **AL-KO**



LAWNFLITE **MTD** **Indespension**
...& many more

LARGE SELECTION FOR ALL YOUR GARDENING NEEDS

01234 826066

info@whites-online.co.uk

www.whites-online.co.uk
College Farm, Oakley, Bedford, Bedfordshire, MK43 7RX

An evening of live music with

Ray Cordell & Alan Howard

Saturday 19th October, 7.30pm



St Mary's Church, Oakley

Tickets £10 from Dorothy or Graham Palmer

email gpalmer@talk21.com mobile 07710 462535

or on the door

An evening of 'live' music with musicians Ray Cordell & Alan Howard.

The guys will be presenting some of their own original compositions, with stories and chat about the inspiration behind the songs and the recording process, plus a selection of popular cover songs from artists they've loved and admired over the years.

Promises to be a great evening, see you there.



SIGNATURE
LETTINGS

**CHOOSE TO LET YOUR PROPERTY
WITH SIGNATURE LETTINGS &
WE'LL GIVE YOU:**

3 MONTHS 0%
PROPERTY MANAGEMENT*
subject to terms and conditions

www.signature-lettings.co.uk

PRS Property
Redress
Scheme

DPS Deposit
Protection
Service

Let's go forward
PROPERTY

RRLA

The offer is available to Landlords instructing Signature Lettings on a property/properties for the FIRST TIME ONLY, or an 'Introduction Only' client opting for a 'Fully Managed' service. All other Signature Lettings standard fees apply.

Our Fully Managed service is valid for the duration of the tenancy and cannot be terminated after the three-month free period. The offer must be mentioned at the time of the instruction and no retrospective claims can be made.

New term and new fun at Oakley Youth Club

Come and have fun!

Oakley Youth Club is open again for the new term. JJ, Jessica and Maddison are the team in place and are ready to welcome young people aged between 11 and 13 on a Friday night 7pm to 9pm.



There is lots to do with games, arts and crafts, quizzes, cookery, music and just chilling out on offer.

£2.50 entrance fee and some money for tuck - a great night out!

Membership form to complete before acceptance.

To find more contact us on oakleyyouthclub@gmail.com

A BIG Thankyou

Also - a BIG thank you to Oakley Parish Council who support the Youth Club with a grant. We could not continue without this and we are very lucky to have such a brilliant facility in Oakley.

Come and join our team

Would you like to come and join our team? We are expanding and are seeking a Youth Club Assistant to help supervise activity, organise games, engage and support the Youth Club Leader. Contracted for 3 hours per week. We currently have two youth club assistants in place.



Candidates are being sought now.

To find out more please contact Sara Fardon Secretary at oycsecretarial@gmail.com

Phantom Sprayer

It is so nice to walk the streets and walks around Oakley and find that it is so much cleaner than it was when I began spraying.

As my dog and myself are aging we probably do not go as far afield as we used to, but when we do walk we find less nasty mess to avoid and less need to spray.




There is sometimes mess to spray on Ruffs Furze Green, which is sad as that is a lovely playground for children. It is also occasionally in the alleyways where the schoolchildren walk to and from school and I hope those few people that ignore the etiquette will **begin to think**. It is not hard to just pick up in a cheap plastic bag and deposit in one of the plentiful bins around the village!



Select Travel Holidays
Home of Cruise Select
24A Mill Street, Bedford



Enjoy exclusive SAVINGS and FREE amenities when booking select voyages with  with Select Travel Holidays

As cruise specialists with 25 years' experience and a preferred partner to Oceania Cruises, Select Travel Holidays (home of Cruise Select) can offer you exclusive savings AND:

- Up to \$450 FREE shipboard credit per stateroom;
- A FREE upgrade to Prestige Select Beverage Package; and/or
- A FREE bottle of champagne in your stateroom

FEATURED CRUISE: CELTIC CLASSICS
10 night Southampton Roundtrip from
15 August 2025 onboard Vista

Veranda Stateroom from £4,699pp £4,429pp -
SAVE £270pp + \$350 FREE Shipboard Credit per
Stateroom + FREE Upgrade to Prestige Beverage
Package

Contact Us To Find Out More:
Tel: 01234 326778
sales@selecttravelholidays.co.uk

Applicable to select cruises and select cabin categories, free amenities and vary according to cruise, savings vary according to cruise and cabin category. Terms and conditions apply. Please enquire.

www.selecttravelholidays.co.uk



BOOK WITH CONFIDENCE
 ABTA & ATOL protected



Almond Garage Doors Ltd



- Servicing Bedford & Milton Keynes
- Spare Parts (including obsolete makes)
- Existing Doors Automated
- EMERGENCY Call Out Service
- New Sales & Installations (Free Quotations)



01234 828953

info@almondgd.co.uk

Fax: 01234 826024

College Farm, Oakley, Beds, MK43 7RX

www.almondgaragedoors.co.uk

Village Defibrillators

Oakley Parish Council have purchased another defibrillator machine for the village. The new machine is located at the Methodist Church on Station Road and is available for public use 24 hours a day.

If you are witnessing a suspected cardiac arrest, call 999 immediately. You will be given instructions by the Ambulance Service. They will give you the location of the nearest defibrillator unit and a code to access the box if it is needed. The defibrillator machine itself will give you full instruction on how to use it. The Ambulance Service will guide you through the process.

The Community Heart Foundation has written these 5 steps on how to give CPR below.

How to do CPR on an adult in 5 steps

1. Check for a response. Firmly shake the person's shoulders and loudly ask if they are okay.
2. **Call 999.** If the person is unconscious and not breathing, or not breathing normally, start CPR.
3. If there is someone with you, ask them to find a defibrillator. The ambulance service will tell you the nearest location to find one.
4. Start chest compressions. With the heel of your hand in the centre of their chest, press down smoothly and firmly at a rate of 2 per second. Try pushing to the beat of Stayin' Alive by the Bee Gees.
5. Use a defibrillator as soon as you can. Follow its instructions carefully while you continue to give CPR.

Locations in the village

Methodist Church, High Street – 24/7 access, located outside

Oakley Village Hall, Church Lane – 24/7 access, located outside

Lincroft School, Station Road – 24/7 access, located outside main school building

Lincroft Playing Field, Station Road – access school term time when gates open, located on the outside sports shed

Oakley Sports & Social Club, Church Lane – access Mon-Thurs 3pm-11pm and Fri-Sun 12pm-11pm, located behind the bar

Robinson & Hall, Highfield Court, Highfield Road – access Mon-Fri 9am-5.30pm, located inside the building

Caroline Worker

Sales, Lettings & Auctions



MAYFAIR
OFFICE GROUP

move
withUS



Our wealth of **experience**
and **friendly service** makes
us the team you can **trust**.

01234 327744 | sales@laneandholmes.co.uk | laneandholmes.co.uk

BEDFORD CHRISTMAS TREE FESTIVAL 2024

Over 65 trees decorated in the theme of...

THE MAGIC OF CHRISTMAS

On:
Wed 4 Dec to Sat 7 Dec - 10am till 5pm
Sun 8 Dec - 12 noon till 4pm

Venue:
St Paul's Church, Bedford, MK40 1SQ

Admission:
£3 (children under 16 free)

Find out more:
 **Bedford Christmas Tree Festival**
E: treefestival@stpaulschurchbedford.org.uk
T: 01234 340163

Festival Concert: 7:30pm Friday 6 December

In aid of:
  **Daily music & performances by community groups, refreshments, competitions and raffle.**

Sponsored by:


OAKLEY VILLAGE MONTHLY

QUIZ

Run by Oakley Parish Council and held in Oakley Village Hall

AUGUST – NO QUIZ (HOLIDAYS)

Friday 20 SEPTEMBER 2024

Friday 18 OCTOBER 2024

Friday 15 NOVEMBER 2024

Friday 13 DECEMBER 2024

7.30pm start


Maximum 6 people per team

£3.00 per person (cash payment only please)

Bring your own snacks and drinks (alcohol allowed)

If you would like to enter a team please advise
Richard Worker at richworker@hotmail.co.uk

Come along and have some fun and socialise with fellow quizzers




How to perform CPR (30:2)

Start CPR* (Give 30 chest compressions followed by 2 rescue breaths).

If you are unable or untrained to perform rescue breaths, give chest compression only CPR (continuous compressions at a rate of 100-120 per minute).

Ensure adequate backward head tilt when giving rescue breaths. Compression should be at a rate of 100-120 per minute in the centre of the chest at a depth of 5-6cm.

For infants (under 1 year) do not tilt the head when administering breaths. Use 2 fingers to compress chest and compressions should be 1/3 of the patient's chest depth.



Scan here for more info

CPR pocket guide

D  **DANGER:** Ensure your own safety first. Check for danger to yourself, the patient and any bystanders.

R  **RESPONSE:** Check patient for a response. Tap their shoulders and ask "are you alright?"

A  **AIRWAY:** Open airway, ensure it's clear. Place your hand on their forehead with fingers under the chin and tilt the head back.

B  **BREATHING:** Check for normal breathing (10 sec). If not breathing normally call 999 or send someone else to call and bring an AED if available.

C  **CPR *** More details on reverse Start chest compressions and if trained combine with rescue breaths (30 compressions 2 rescue breaths)

www.eaaa.org.uk



Tudor Rose Patchwork

*"Bedfordshire's
Foremost
Threadcraft
Emporium!"*

We're on Station Road

**We have lots of general sewing
needs – haberdashery and fabric!**

*Patchwork Fabrics, Kits, Patterns
Workshops - Regular Groups
Embroidery, Tapestry, Knit Yarns Beads,
Goldwork, General Sewing
Pfaff and Janome Sewing Machines
Books, Dyes, Needles, Knitting Pins ...*

**Open Monday to Saturday
9 a.m. to 5 p.m.**

**Oakley Park, Station Rd., Oakley, Beds. MK43 7RB
01234 824983 – info@tudorrosepatchwork.co.uk
<https://www.tudorrosepatchwork.co.uk>**

Oakley's Own Coffee Shop



for Coffee

Coffee, Tea, Chocolate, Cold Drinks

Hot Food, Cold Food

Breakfast, Lunch, Morning/Afternoon Tea

All Food made on the Premises!

**Open Monday to Saturday
9 a.m. to 4 p.m.**

Oakley Park, Station Road, Oakley - Phone 01234 824113



Bedford & District Audio News

Bedford's talking newspaper

Local news for visually-impaired people-
now online and available to everyone

Recorded by volunteers, updated
weekly with the latest Bedford news

Listen for free on Alexa,
Google Nest or www.bdan.org.uk

Alexa: "Play podcast, Bedford & District Audio News"

Google: "Play Bedford & District Audio News"

Find us on BWBF Talking Newspapers
or your favourite podcast app

mail@bdan.org.uk

Registered Charity No 802814



Oakley Village Hall

Church Lane,
Oakley,
Bedfordshire, MK43 7RJ

A well-appointed village hall
Main hall with stage and PA system
(Main hall is air conditioned)

Separate meeting room with bar

Well equipped kitchen

For information and bookings
please telephone 07788 796996



Oakley.IT

maintain ■ IT
repair ■ IT
train ■ IT



Jan Rymarz – Principal IT Technician / Trainer

Fast PC and Laptop Repairs

Clear and Friendly Training

Fast and Efficient Service

Years of experience and services covering everything!

A few recent customer comments

"Great service"

"Trustworthy & reliable"

"Efficient & Affordable"

"Highly recommended"



100% Satisfaction
Regular Feedback
Online

07401 250 118

help@oakleyit.co.uk | www.oakleyit.co.uk



Down Memory Lane

From the roads of Oakley to North American champion

Every Thursday evening The Oakley Motorcycle Club (OMC) meet at the Oakley Sports and Social Club. The club is recognised as one of the best independent clubs nationally and in addition to providing a hub for those with such an interest has raised over £44,000 for the East Anglian Air Ambulance Service. Since the motorcycle was first invented by the Germans Daimler and Maybach in 1885 interest in motor bikes has become widespread, including some Oakley residents, and after forming in January 2005 the OMC now boasts over 500 current members.

A co-founder of OMC is Roger Bays who has been Chair for the past 19 years. Roger was recently contacted by Steve Brown a self-described "one-time long-haired yobbo from Oakley". Steve moved to Oakley in 1973 as a sixteen-year-old and lived in Church Lane. Some villagers may remember him, his Dad Bob and sister Debbie. As a teenager he rode the roads of Oakley and the surrounding area with other local bikers such as Laurie Butler, Ed Morris, Chris Doyle, Mick Aspinall and Jonathon Longstaff, all of whom I remember well.

Steve Brown's enthusiasm for motor bikes has continued to this day but he has had a few adventures along the way. Steve moved to Canada in 1986 and developed an interest in motorcycle track racing in 1994.

He rode a series of bikes, see photos, including a 500 Honda, Yamaha TZ250 and TZ350 and a GP 250 Yamaha and started to successfully involve himself in the Canadian Vintage Grand Prix racing circuit picking up podium places along the way.

In 1999 he switched to racing sidecars which led to greater success as he won the F1 Sidecar Canadian Championship in 2004 and the USA equivalent in 2005. After a hectic schedule of racing sidecars all over North America he returned to solo bikes up until 2017 when he competed in his last race. He concluded a highly successful motor racing career at Mosport Park, Ontario at the



age of 60.



Steve fondly remembers his "Oakley roots" and has shown great interest in OMC in particular. He has been provided with website links to enable him to read our Village Newsletters and to keep up with OMC activities.

He has clearly enjoyed a highly successful motor cycle career, winning many championships, founded on the roads of Oakley and as he says "seeing how much air he could get over the Oakley river bridges" on his bike !!!

Richard Worker

Rooms now available at Emmaus Village Carlton for people experiencing homelessness

Bedfordshire homelessness charity Emmaus Village Carlton has seven vacant rooms in its community ready to support people away from homelessness.

The charity in Carlton Village accommodates up to 42 formerly homeless people by providing them with a home, individual support and work opportunities within a community setting.

Recently the charity assisted more people in its community in moving onto independent living, leaving rooms available for anybody experiencing, or at risk of homelessness.

Each resident who lives at Emmaus (known to the charity as a companion) has their own bedroom, with all living expenses covered and meals provided in a communal dining room. There is no time limit on how long people stay at Emmaus, giving companions stability and an opportunity to break the cycle of homelessness.

Donna-Louise Cobban, Chief Executive at Emmaus Village Carlton, said:

"We're delighted to have rooms now available for new companions to come and join us. We are always pleased to support people staying with us to transition on to independent living, when the time is right for them.

"We are also preparing some of our current companions to transfer into our move-on flats to prepare them for the next part of their journeys, which is a very rewarding part of the work we do.

"As well as providing vulnerable people with a secure home, we give them the opportunity to regain their self-esteem and support them to rebuild their lives."

All companions who live at Emmaus contribute to the community with work opportunities in the charity's social enterprises. In exchange for this voluntary work, companions receive an allowance based on the living wage, work experience, training and leisure activities, plus a variety of support services as well as a place to call home.

If you are experiencing homelessness, or are at risk of becoming homeless, and are interested in joining the Emmaus Village Carlton community, please fill out a referral form: www.emmaus.org.uk/village-carlton/get-support.

The charity takes referrals from agencies and individuals - each person is considered on an individual basis. If you want more information, email Support Manager: rebecca-bateman@emmausvc.org or call 01234 720826.

Potential applicants can also enquire via reception at: office@emmausvc.org

Tara Gillen Photography



SHARNBROOK
MILL THEATRE

The Queen's Award
for Voluntary Service



THE GIRL ON THE TRAIN

Based on the bestselling novel
by Paula Hawkins and the DreamWorks film
Adapted by Rachel Wagstaff & Duncan Abel
This amateur production is presented by arrangement with
Concord Theatricals Ltd on behalf of Samuel French Ltd
www.concordtheatricals.co.uk

SHARNBROOK MILL THEATRE
24TH-28TH SEPTEMBER 2024

29th October - 2nd November

Rewired: a musical

3rd October

Swing's the Thing Big Band!

A fundraising event

24th November

**A Christmas Carol
with Gerald Dickens**

A fundraising event

SHARNBROOK
MILL THEATRE

Rewired

Book by
Kaye Vincent

Music by
Kaye Tompkins

Lyrics by
Kaye Vincent & Kaye Tompkins

By kind arrangement with The National Organizational
Copyrights produced by World of The Castle, Westborough

SHARNBROOK MILL THEATRE
29th October-2nd November

Tickets available online from
www.sharnbrookmilltheatre.co.uk
and in person from Park & Ride, High Wycombe Lane, Sharnbrook, MK44 3PB

Sharnbrook Mill Theatre is a registered charity

SHARNBROOK
MILL THEATRE

Swing's the Thing!

Big Band Sound

Featuring
Mel Peake and Katherine McLean

SHARNBROOK MILL THEATRE
THURSDAY, 3RD OCTOBER 7.30pm

Tickets £15, available online from:
www.sharnbrookmilltheatre.co.uk
or in person from Park & Ride, High Wycombe Lane, Sharnbrook, MK44 3PB

A fundraising event for Sharnbrook Mill Theatre, a registered charity

SHARNBROOK
MILL THEATRE

Gerald Dickens

Great, great grandson of Charles Dickens

in his internationally acclaimed, one man production of
A Christmas Carol

Sharnbrook Mill Theatre
24th November 2024 at 4pm

Tickets £15, available online from
www.sharnbrookmilltheatre.co.uk

Sharnbrook Mill Theatre is a registered charity

www.sharnbrookmilltheatre.co.uk

Uncomfortable with letting strange people into your home?

We are an **all-female** team of interior painters and decorators, working in the north beds village area. Fully experienced in hanging wallpaper, painting – including paint effects, restoring and repairing surfaces, wallpaper stripping and all general home decorating. We are all individually CRB checked, will provide references and testimonials showing the standard of our workmanship giving you peace of mind. We will come to your home to discuss your exact requirement, offer advice and produce a free written specification and quotation. We will then arrive on time, keeping disturbance to the minimum and deliver a quality job using only top quality materials.



OAKLEY ANGELS
The all-female painting
and decorating team

- Trustworthy
- Experienced
- Guaranteed work
- Peace of mind
- High quality work at a reasonable price

Phone: 07899 778345
or: 01294 822499



Oakley Allotments

Allotment gardens—those little patches of green where you can cultivate fruits, vegetables, and flowers—offer a delightful blend of physical exercise, mental refreshment, and community connection.

Physical Health and Exercise:

Physical exercise: Working on your allotment involves activities like digging, hoeing, and planting. These various tasks are valuable forms of exercise.

Flexibility and Strength: Movements essential to gardening activities keep your body flexible and maintain muscle strength. It's like a free gym session with bonus vitamin D from the sun.

Sunlight: Spending time outside on your allotment increases your vitamin D levels and may even help lower blood pressure.

Mental Wellbeing:

Calming and Comforting: Allotment gardeners often find solace in their plots. Sowing seeds, weeding, and nurturing plants can help counter anxiety. In an oasis of calm it is possible to escape and possibly consider solutions to some of life's pressures.

Sanctuary: During the pandemic, many people turned to their allotments as safe havens. Being surrounded by greenery, away from stress, can work wonders for your mental state.

Sense of Achievement: There is little that beats the thrill of planning, growing something from seed, nurturing it and now, eating.

Community:

Allotment Companions: You'll meet fellow enthusiasts - people with this common interest. Swap tips, exchange surplus produce, and make new friends.

Wildlife Encounters: Allotments are mini ecosystems. You'll observe birds, insects, and other life (some welcome, some not!).

Family Involvement: Whilst an allotment can provide solitude if you need it, many families become involved. It can be a great thing for youngsters to explore, discover and enjoy, possibly leading to a lifelong interest in gardening...and more.

Cost-Effective Fresh Food:

Own-grown Goodness: Allotments let you grow your own crops and beautiful flowers. You can have more control over how they are grown and avoid some of the less-welcome chemicals etc.

Beating Rising Costs: As the cost of living climbs, having your own food source becomes increasingly valuable. Plus, it's immensely satisfying to serve a meal made with your own harvest of fruits and vegetables.

As I contemplated what I was going to write about in this issue of the newsletter, hopefully not repeating previous content, an interesting (and concerning) topic presented itself on the local news. UK fruit farmers are struggling with rising costs, leading to them considering abandoning production of soft fruits particularly. The numbers are worrying...

Soft fruits are very popular in the UK - we spent 1.87 billion pounds on raspberries, strawberries and blackberries etc. last year! Yet, 47% of farmers made no profit, or made a loss last year. The cost of producing a ton of raspberries has risen by 2000 pounds over the last 4 years - costs have risen by 33%, retail prices rose by 14%, but growers only received 4% more!

We cannot go elsewhere in the world to fill the gap in declining soft fruit production as we are a major consumer and no other countries could meet the demand. There are many other issues too, such as our increasing loss of growing space and the unknown (unknowable) effects of climate change.

This makes allotments even more valuable and we may see an increasing demand for them. Our own soft fruit production has been good this year: strawberries 6.3Kgs, blackcurrants 0.4 Kgs, gooseberries 2.7 Kgs, raspberries 3.1 Kgs, blueberries 0.9 Kgs, cultivated blackberries 12 Kgs - so far. We did not weigh blackberries shared with, and picked by, others. We have also bought supermarket strawberries produced by UK growers.

I will report on this year's overall successes and failures in the next newsletter - it has been interesting so far - mainly in a good way.

At the moment, we have no spare plots and a waiting-list of 4 people.



Steve Nicholas

*Bring your
garden
to life!*



OAKLEY
BUILDING & LANDSCAPES



Artificial Grass | Building & Landscaping
Driveways, Paths & Patios
Timber & Composite Decking

☎ 01234 915049 ✉ info@oakley-landscapes.co.uk
☎ 07803 749340 🌐 www.oakley-landscapes.co.uk

Oakley Village Monthly Quiz

Many thanks to all of those who have supported the Oakley Village Quiz. Since the last Newsletter we held quizzes in June and July with over 90 people in attendance at each. "Outnumbered" won the June quiz and "Veni Vidi err" the July event (both pictured). We took a break for holidays in August but commence again on **20 September** where we will be celebrating our first year anniversary !! A few interesting pieces of quiz information :-

33 different teams have taken part during the year

The 11 quizzes held to date have raised £2249 in profit that has been or will be distributed to Oakley village organisations. In addition, the hire of the hall has contributed £584 to the Village Hall funds.

5 different teams have been the winners with the Village Hall Committee led by Julia Nicholas, under the guise of different team names, winning the most often (4),

Team names always raise a chuckle and in Caroline Worker's (runs the quizzes with me) and my opinion "Mrs Goggins is Innocent" (used at the height of the Post Office enquiries) and "Will It Ever Come Home" (used during the Euro's) have been the most amusing !!

I advised in the Summer Newsletter that I would detail the organisations who the Parish Council have nominated to receive a share of the quiz profits which will be distributed in March 2025. These will be; Air Cadets, Oakley Scout Group, Oakley Brownies and Rainbows, Oakley Methodist Messy Church, St Mary's Messy Church and AFC Oakley Junior Football.

In addition, donations will be made to the Day Centre and the home for the disabled, located in the High Street, to help support their Christmas celebrations.

Remember anyone can enter the quiz and everyone has had a great time and takes advantage to catch up with friends and neighbours. The next **FOUR** quizzes will be held on; **20 September, 18 October, 15 November and 13 December**. If anyone wishes to enter a team, maximum 6 people, then please email me at richworker@hotmail.com.

Richard Worker



Reporting Suspicious Texts, Calls & Emails

Here's some practical advice you can follow when it comes to dealing with suspicious messages and calls:

If you have any doubts about a message, contact the organisation directly using the contact details on their official website.

Do not use the number or web address in the message. Your bank, or any other official source, will not ask you to provide sensitive information by email.

Received an email that doesn't feel right? STOP! Report suspicious emails by forwarding them to: report@phishing.gov.uk. Send copied emails to this address that feel suspicious, even if you're not certain they're a scam – they will be checked.

Always report suspicious text messages or scam call numbers, free of charge, to 7726. Your provider can find out where the text came from and block or ban the sender.

- To report a scam text, forward it to 7726 and then send the sender's number when prompted.
- To report a scam call, simply text 7726 with the word 'Call' followed by the scam caller's number.

If you have lost money or provided financial information as a result of a phishing scam, notify your bank immediately and report it to Action Fraud at actionfraud.police.uk or by calling 0300 123 2040.

Action Fraud
National Fraud & Cyber Crime Reporting Centre
0300 123 2040



Oakley Educational Foundation



The Foundation exists to assist young people between ages 16-25, who live in the Parish, with grants towards the costs of books and tools, etc. in furtherance of their education.

Applications and more information can be obtained from the Parish Clerk.

For an application form please email parishclerk@oakleyvillage.co.uk

Applications accepted in May and November. Receipts for purchases of goods must be provided.

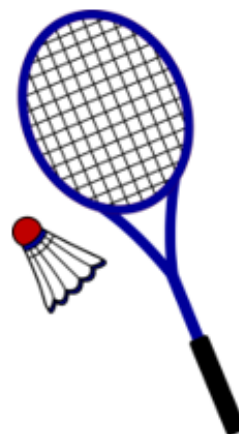
Oakley Educational Charity

The Charity has had a turbulent few years since our previous clerk expressed her intention to step down from the role. Unfortunately, we were not able to find anyone to replace her at that time so she agreed to carry on. However, the workload in her own business remained high plus she suffered the tragic loss of her partner. As a result, families and trustees found it very difficult to contact her and whilst applications from young people needing grants still came in, the trustees were not able to see the applications nor decide on them. We apologise that this left many families in limbo for a long time, waiting to hear if their grant applications had been successful.

We are now pleased to report that we have a new clerk and the accounts have all been handed over to her. We are in the process of changing bank mandates and hope to be ready to accept and decide on all new grant applications in the Autumn term. Eventually we will set up a dedicated email address so that we are not in this situation again. In the meantime, please request application forms from the parish council clerk who will send out and collect the forms during October and November.

Jane Walker
Bedford Borough Councillor
- Clapham & Oakley Ward

OAKLEY BADMINTON CLUB



Lincroft Sports Centre

Come and get warm, fixed charge !

Every Wednesday 7.30- 9.00pm

All ages and abilities welcome.

Tel. 07557 441206

Oakley Rural Day Centre

Oakley Rural, The Old School, Lovell Road, Oakley, Beds, MK43 7RX

Tel: 01234 824935 Mobile: 07733 227374

Email: oakleyruraldaycentre@yahoo.com

Web: www.oakleyruraldaycentre.weebly.com

Registered Charity No: 1060283



AUTUMN 2024

Our Day Centre provides our older people with a place where they can make friends in a warm and comfortable atmosphere. We provide various activities including crafts, word games, board games, bingo and other mentally stimulating activities.

We also provide chair based exercise classes. Our clients really enjoy taking part and we are finding them to be very beneficial. We also have choirs and entertainers visit the centre.

We serve freshly prepared home cooked lunches and dessert together with tea, coffee and toast at the start of the day with beverages throughout. The Centre is open Tuesday, Wednesday and Thursday, 10.00am to 2.30pm.

For details of costs, advice and to book a visit please contact Lynne on 01234 824935 or 07733 227374.

Enquiries welcome from Bedford and surrounding villages in North Bedfordshire.

Please visit our website at www.oakleyruraldaycentre.weebly.com The site is updated regularly with the latest news from the centre.

We also have a Facebook page. This will be updated with the latest news and photographs of events at the centre. The Facebook page can be found at www.facebook.com/oakleyruraldaycentre



We also articles in various publications throughout Bedford and surrounding areas to raise the profile of the centre.

SUPPORT THE DAY CENTRE THROUGH EASY FUNDINGRAISING

Did you know that whenever you buy anything online – from your small to large purchases – you could be raising free donations for Oakley Rural Day Centre with easyfundraising? There are over 7,000 brands on board ready to make a donation – including eBay, Argos, John Lewis, ASOS, Booking.com and M&S – and it won't cost you a penny extra to help us raise funds.



All you need to do is:

1. Go to easyfundraising.org.uk and register on the site and choose the Oakley Rural Day Centre as your preferred charity.
2. Every time you shop online, go to easyfundraising first to find the site you want and start shopping.
3. After you've checked out, the brand will make a donation to Oakley Rural Day Centre at no extra cost to you whatsoever! There are no

catches or hidden charges and Oakley Rural Day Centre will be really grateful for your donations.



**Support us through
easyfundraising**

Thank you for your support.

Homecare you can rely on



With our help, clients are able to stay in their familiar surroundings that they have spent their lives shaping. Our visiting and live-in care professionals adapt and work to support you in your own home, so you can keep your independence, possessions, family and pets around you regardless of your situation.

From 30-minute visits to round-the-clock live-in care, GoodOaks' care professionals help people in their own homes with:

- Personal care
- Preparing meals
- Medication administration
- Companionship
- Housework
- Shopping and escorting to appointments
- And much more!



To find out more call or visit

☎ 01234 395478

@ bedford@goodoakshomecare.co.uk

🌐 goodoakshomecare.co.uk/bedford

GoodOaks
Quality Care at Home

Exciting Times at Oakley Sports & Social Club!

Since our last update in the Oakley Parish Council Newsletter, Oakley Sports & Social Club has been buzzing with activity.

We are thrilled to welcome our new Stewards, Adam Worker and Kara Lawrence, who took the helm at the start of the year. Many of you might know Adam from AR Worker Construction and Kara as the former Chairperson of Oakley Preschool.

This summer we have spruced up our patio area with the addition of festoon lighting that casts a warm glow in the evenings and a large planter that adds a splash of colour. To complement this we've constructed an outdoor bar which has significantly reduced wait times during events, enhancing the experience for our members and guests.



Speaking of membership we have introduced a new system at the tills to ensure that members receive the benefits they deserve. By swiping a physical membership card or using the Oakley Sports & Social Club mobile app, members enjoy discounted pricing on all food and drink. Non-members, on the other hand, will see a 25% increase in prices. If you are not a member yet now is the time to join! You can sign up online or at the bar.

This year has been packed with exciting events. The Steam Rally built on the success of last year featuring a fun fair, stalls, live music, and even a fire engine - all free for the local community! We are already planning to make next year's event even bigger.



Our screenings of the UEFA Euro 2024 tournament were a huge hit, especially as England reached the final. With the help of local AV company JAP Sound who generously provided a large outdoor screen at a discounted rate for the final, we created an unforgettable experience for members to enjoy.



We presently host one pool team captained by "Tank" Hardwick. They are currently sitting mid table of division 1 in the summer league with 3 games to play at time of writing this. More positively they are in the semi-finals of the team knockout.

The league is always looking out for new teams and Oakley Sports & Social Club has Tuesday evenings available if there is anyone that would like to setup a Tuesday team. Email "Tank" Hardwick (tanko270@googlemail.com) for more details about how to join the league and what is involved.

The pétanque court is being regularly used following its refurbishment last year (email info@oakleyssc.com if you would like more information about this) and don't forget that we also host a community poker night every Sunday too.

Looking ahead, we have a fantastic lineup of events:

1st November: Kids' Halloween Disco, 1pm – 3pm, with DJ Stevo for member's children. Details are on our website and Facebook page.

2nd November: Fireworks 2024. This event is pre-paid and online tickets only. Members will get priority access to tickets in September, so sign up now to avoid missing out! Expect a spectacular display, stalls, hot food, bouncy castles, live music, and a brand-new laser show.

14th December: Christmas Fete & Market. Santa will visit with his reindeer, and we will have live music, stalls, fun fair rides, hot food, mulled wine, and more!

31st December: NYE Party. Details to follow - stay tuned!

Finally, as Chairman, I just wanted to iterate that the Oakley Sports & Social Club Committee are committed to ensuring that Oakley Sports & Social Club continues to support and enrich our local community, offering unrivalled value in North Bedfordshire and beyond.

If you have any questions about the club or our events, please do not hesitate to contact us at info@oakleyssc.com.



Robbie Bays Chairperson, Oakley Sports & Social Club & Oakley Recreation Association

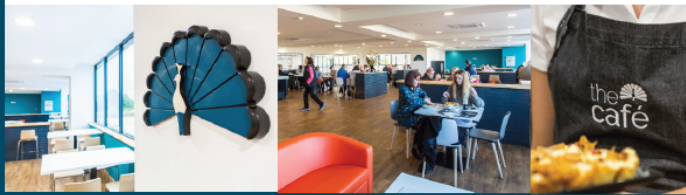


The Café at W&H Peacock is

OPEN

View the salerooms for our upcoming auctions and then relax with a coffee and a slice of cake.

Our unique café in Bedford Auction Centre with free wi-fi comfortably seats over 100 customers. We serve cooked breakfasts, paninis and sandwiches, light lunches and snacks plus a range of hot and cold drinks.



Eastcotts Park,
Wallis Way,
Bedford,
MK42 0PE
01234 266 366

Visit
www.peacockscfe.co.uk
for more details on our opening
hours and to view our full menu.

W&H PEACOCK

AUCTIONEERS & VALUERS



Auction Sales & Valuations

Valuation, collection and auction service of individual items through to complete property and commercial clearances.

Call for a free no obligation quote or
email info@peacockauction.co.uk

SALE ENTRIES NOW INVITED
www.peacockauction.co.uk

Eastcotts Park,
Wallis Way,
Bedford, MK42 0PE

01234 266366

HIRE THE OLD SCHOOL

Lovell Road, MK43 7RX,
Reg. Charity No. 1119074

- *Hall available for regular and one-off bookings at weekends*
- *Meeting Room available for regular and one-off bookings weekdays and weekends*
- *Meeting room now with self-contained facilities*



Please contact :

Bill Sellars 07980 745292

Email: billsellars@theoldschooloakley.org.uk

Web : www.theoldschooloakley.org.uk



SYDNEY HOWARD LOVELL MEMORIAL ALMHOUSES AT OAKLEY

The Lovell Homes is a small independent living community comprising two bedroomed bungalows and one/two bedroomed flats

Applicants over the age of 60 are invited to apply to go on the register of interest for a property - priority will be given to those with an agricultural or related background.

If you would like to be considered please visit the website www.lovellhomesoakley.co.uk

Or contact the Clerk :

Mandy Newton

On 07736 466965

Registered Charity Number : 200480

Oakley Kindergarten News



On the final day of the summer term we held an end of year celebration for all our 2024 Leavers. An afternoon tea was provided by our cook, Miss Alice, with a beautiful cake donated

by one of our parents too. The children showed their families where and what they have been learning about this term. A performance of some of their favourite songs and a Graduation Ceremony completed the afternoon.

We wish them luck as they all transition to their chosen primary schools and we are looking forward to welcoming all our new families who are starting with us in the autumn term.



The occasion was also an opportunity to celebrate our Deputy manager, Mrs Dianne Todd. Dianne has had many years of association with Oakley Kindergarten and formerly Oakley Pre-school and she will not be returning to the kindergarten in September. She will be greatly missed by colleagues and families alike. Dianne and her family are relocating and we wish her well on the next exciting stage of her own journey.

We will have two new members of staff joining us from September and we are looking forward to welcoming them to our setting.

The setting is continuing to go from strength to strength and we are operating a waiting list for all our rooms now. Do get in contact, if you are interested to have a look around or for

your child to join our kindergarten. Please see details below.

Admissions

If you would like to register your child for a place at kindergarten, please contact us on 01234 826452 or by email: info@oakleykindergarten.co.uk Our website is: www.oakleykindergarten.com

Follow us on Facebook to keep up with our latest news and events.

We accept the Free Childcare for Working Parents entitlements for children who are eligible, as well as Tax Free Childcare. The funding offer has been expanded further from September 2024, to include children from 9 months who may now be eligible for 15 hours of funding per week. From September 2025, eligible working parents with children between 9 months and up to school age will have access to 30 hours childcare.

For information on funding, you can follow the link on our website to Childcare Choices or alternatively you can contact the Family Information Service 0800 023 2057

Sally Martiello



Bedfordshire Festival of Autumn Walks 2024

Ahead of the Festival running 7th – 15th September we would like to let you know of some of the really exciting things we will have on offer.

This year we have decided to go bigger and bolder and have reached out beyond the 4 groups that make up the Bedfordshire Area.

Firstly, we have engaged with local Ramblers Groups that border Bedfordshire. As Ramblers, I am sure many of us enjoy a day out across the county border – so let's invite local groups into Bedfordshire to share our beautiful country. So far, we have commitment from Huntingdon Ramblers, Wel-lingborough Ramblers and the Stag Walkers, a Hertfordshire Rambling group aimed at the 20,30,40's. We also have a walk offered by the Northampton Shamblers.

Thinking outside the box, local interest walks always get a good turn out and so we are delighted to share that on Friday 13th we have a Ghost Walk being run but our great friend and original Beds Walks Fest organiser Barry Ingram – come if you dare! We also have guided walks around our Bedford Victorian Cemetery, the first looking at interesting names and the second on the beautiful variety of trees that call the cemetery home.

There are also two history walks being run in Turvey by the Turvey History Society. In addition, there will be a history walk around Luton and a Pre-history walk in the surrounding hills. We are also delighted to have a nature walk in the Warden and Galley hills run by the Chiltern Trust.

Bedfordshire Festival of Autumn Walks

Hosted by



RAMBLERS

Bedfordshire

7th to 15th September 2024

Explore our beautiful little county on foot



Most walks are free to everyone and most do not require booking

Full details on

www.bedswalkfest.co.uk/walks

Leighton Buzzard Ramblers, North Beds Ramblers
Lea & Icknield (Luton) Ramblers, Ivel Valley Walkers



What would a festival be without a training course? So, we are delighted to announce the return of a map reading course, being run as part of the festival.

Feeling a bit more adventurous? Why not try the 40 miles Greensand Ridge Challenge hosted over a weekend or too much like hard work? Then maybe a gentle stroll along the River Great Ouse and a gentle sail back on the John Bunyan Boat may be just up your street, sorry river!

I want something different - I hear you say! Then hopefully our Bat Walk will interest you!

Our 9 days of walks will vary from a half mile leisurely stroll to a 21mile march across the Greensand Ridge, so hopefully there's something for everyone.

The Bedfordshire Walking Festival 2024 (7th – 15th September) will be so much more than just walking. Come and find out.

For more information and the full program go to:

www.bedswalkfest.co.uk/walks

or check out our dedicated Facebook page Bedfordshire Festival of Autumn walks.

We look forward to meeting you.

North Beds Ramblers:

Come and join us for a walk. We walk every Saturday afternoon approx. 6 miles

and Saturdays twice a month in morning for approx. 12 miles

Sept Walks

The Bedfordshire Festival of Autumn Walks 7th – 15th September

Full details are available on <https://www.bedswalkfest.co.uk/> or the dedicated Facebook page Bedfordshire Festival of Autumn Walks.

++++++Start of the Bedfordshire

Festival of Autumn Walks++++++

7th pm Wilstead, 6 miles

8th pm Old Warden, 5.5 miles

10th am Bedford Priory Country Park 10 miles

11th am Woburn 6 miles

12th am Bromham 6 miles or John Bunyan Boat & Walk 5.5 miles and sail back – Booking essential or pm Mowsbury Park 5.5 miles

14th am Harrold Country Park, 6.5 miles or pm

Harrold Country Park, 6.25 miles or all day 12.75 miles

15th am Sharnbrook 6 miles

++++++End of the Bedfordshire

Festival of Autumn Walks++++++

21st pm Potton, Deepdale 7 miles

28th am Thrapston, 12 miles or pm Aspley Guise 6 miles

Oct Walks

5th pm Tempsford 7 miles

12th am John Bunyan Trail pt 7 meet at Elstow at 9:30, walk from Stevington 13.25 miles or Bedford Priory CP 8 miles

19th pm Maulden 6 miles

26th am Castle Ashby 12.25 miles or Ampthill 7 miles

Contact; Margaret Sawyer 07780933729 Facebook; North Beds Ramblers

<https://www.ramblers.org.uk/north-bedfordshire>

NAO Cattery



BOOK NOW!

07411 136691

naoservices111@gmail.com

www.naoservices111.weebly.com

Bramble Lodge, 29 Oakley Road, Clapham, Bedford MK41 6AN

Opening Hours: 9.00-11.00 Mon-Sat & 18.00-19.00hrs Mon-Fri
Sunday and Bank Holidays Closed

* Note that all boarding cats must be healthy on arrival and fully inoculated against cat flu and contagious enteritis. Terms and Conditions apply, charge includes insurance and vet on call.

NAO Cleaning

- Regular cleaning (Weekly, Fortnightly, Monthly etc)
- Home Care Cleans
- Spring cleans
- Moving In & out clean
- Builders before and after clean
- Tenancy beginning & end clean

FOR A **FREE** ESTIMATE CALL TODAY ON
07411 136691

Bramble Lodge, 29 Oakley Rd, Clapham, Bedfordshire MK41 6AN

www.naoservices111.weebly.com

naoservices111@gmail.com

We cover all of Bedfordshire

RP TESTA

PLUMBING & HEATING SERVICES LIMITED

A professional service with over
30 years experience for
all general plumbing and heating requirements
and full design and installation for:

- ◆ **CENTRAL HEATING inc. LPG**
- ◆ **BATHROOMS: inc. tiling etc.**
- ◆ **UNDERFLOOR HEATING**



A LOCAL AND RELIABLE SERVICE

01234 781827

www.testaplumbingandheating.co.uk



Speedwatch Report

(incorporating our response to the Letter to the Editor published in the Summer 2024 Newsletter)

We usually take break in late July and August so we have only completed four operations since our last report. These were revisits to Reynes Drive, Lovell Road, Pavenham Road and the 40mph section of Highfield Road.

This report was always intended to focus on data of speeds in the 30mph section of Highfield Road (between the crossroads and the A6 roundabout) captured remotely by the Viasis Display sited near the railway bridge. So, Lesley Brown's Letter to the Editor in the last newsletter giving an insight into the views of residents was well timed and welcomed. It so happened that on our most recent visit to the 40mph section of Highfield Road, in addition to recording speeds of traffic coming down the hill, we had also been monitoring how the Speed display was picking up the speeds of traffic in the 40mph section, something also commented on by Mrs Brown. The remedy would be to reduce the range of the radar beam, something which proved to be more difficult than it looked in the manual! However, with help from the manufacturer, we are able to apply filters to edit out such unwanted data and traffic from east of the roundabout is not included in our data.

The primary purpose of the Viasis display is to make drivers aware of their approaching speed and by refreshing the display every two seconds, to encourage compliance with the speed limit. Each time the speed of the approaching vehicle changes, data is recorded of its date, time, speed and direction. You may have noticed that sometimes the display does not react as you approach. This is because it records data from traffic both approaching and departing, but it cannot do both at once and may be busy storing data from vehicles travelling towards you.

As a resident of Highfield Road, Mrs Brown is clearly aware of and concerned about speeding between the roundabout and crossroads and vice versa. So are we. We have many weeks' worth of data but have been surprised that, unlike in most other locations, there is considerable variation between weeks. In what seems to be a fairly typical week around 15000 vehicles pass in each direction. Monday to Fridays average in the region of 2400 vehicles a day, Saturdays around 2000 and Sundays more like 1400. The average speed of traffic is close to 25mph, with 3 in 4 vehicles travelling at less than 28mph. Traffic travelling away from the village tends to be a little faster, but this may be due to the position of the recorder which captures data closer to the roundabout. Around 7% of vehicles are travelling between 31 and 34 mph with around 3% exceeding 35mph. This amounts to just over 2000 vehicles a week at 31-34mph and around 750 in excess of 35mph. The highest recorded speed was around 56mph.



Mrs Brown correctly identified that parking on the road would slow traffic. It does, and on some days around 40% of traffic is travelling at less than 15mph. It has been good to have a resident's perspective and we thank Mrs Brown's for her interest in our efforts to moderate speeding around the village. We are always ready to receive questions and/or comments about particular concerns you may have at paulphillips65@gmail.com

Each month the Bedfordshire Police Speedwatch Co-ordinator publishes monthly data which in the last few months has included mugshots of teams on operations. July's featured some of our own team, including a new volunteer, on Pavenham Road, modelling the latest in ill-fitting hi-vis jackets. Fame at last!

Paul Phillips (Speedwatch Co-ordinator)

NEW FREE BUSINESS SUPPORT PROGRAMMES ON OFFER

The Bedford Borough Business Boost programme provides Bedford Borough based individuals with free business support, offering, online and in person workshops, 1-2-1 mentoring & coaching, a help-line, peer support and more.

The Business Boost programme tailors the free support to your business needs, helping with various challenges businesses are facing, by helping develop skills and knowledge, including but not limited to, getting a new business idea started, enhancing online presence, marketing, AI for business, growing your business; working from home, bid writing and much, more. All for FREE!

There is a dedicated website where you can find more information, and the application process is very simple - <https://beds-bb.deytonbell.com/>

The Bedford Borough Greens Skills Development Programme is a free programme and resource for Bedford Borough based businesses and people looking for a career involving green skills. It has been created for:

Businesses with a need to enhance internal capacity for sustainability and green skills

Individuals with a desire to enhance their knowledge

Individuals with a desire to shift career into the green economy

The free online workshops cover Carbon footprint management; Resources efficiency strategies; Strategic green planning & effective communication; Sustainability and environmental action plans; Greening your supply chain.

Businesses are welcome to attend the workshops relevant to them or attend all 5 to receive the Bedford Borough Sustainability Champion Certificate.

Again, there is a dedicated website where you can find more information, and the application process is very simple Please visit - <https://bgs.deytonbell.com/>



FREE BUSINESS SUPPORT FOR BUSINESSES & ENTREPRENEURS BASED IN THE BEDFORD BOROUGH COUNCIL AREA

- ▶ 1-2-1 Business Mentoring
- ▶ Workshops - Online & In-person
- ▶ Peer Support
- ▶ Advice & Resources

beds-bb.deytonbell.com



**Bedford Borough Green Skills
Development Programme**

FREE SUPPORT FOR BEDFORD BOROUGH BASED BUSINESSES & PEOPLE LOOKING FOR A CAREER INVOLVING GREEN SKILLS

Free online workshops covering Carbon footprint management, Resources efficiency strategies, Strategic green planning & effective communications, Sustainability & environmental action plans & Greening your supply chain



bgs.deytonbell.com

Girlguiding in Oakley



Oakley has two guiding units – Rainbows for girls aged 4 -7, and Brownies for girls aged 7-10.

If you would like to enrol your daughter in either of these units or any other units locally, please register your daughter at <https://www.girlguiding.org.uk/information-for-parents/register-your-daughter/>

If you would like more information about the individual units before you register your daughter, you can use the contact details below.



1st Oakley Rainbows (Wednesdays)

Unit contact: Amanda Keen (Assistant Leader) oakleyclaphamrainbows@outlook.com



1st Oakley Brownies (Fridays)

If you think your child would enjoy being a Brownie and taking part in some of these activities and community events, please sign up on the website: www.girlguiding.org.uk (register a child) or contact

Kathy Jones -leader at 1st Oakley Brownies by emailing snowyowloakleybrownies@outlook.com

Kathy Jones

Steve's Snippet No. 74

Have you noticed the lack of insects this year?

The decline in the number of flying insects has been noticeable for some years, particularly since you can drive about without masses of flies and their relatives colliding with your windscreen in vast numbers, as they did years ago.

Monty Don remarked on it recently on Gardener's World, citing a unique combination of, mainly weather-related, factors this year, leading to a very marked reduction in insect numbers.

Not only are we reliant on a lot of insects (not just bees) as pollinators of our food, but many animal species rely on them too as their major food source. We are likely to see a decline in the numbers of birds and bats too. Bird populations have been hit hard already by widespread Avian Flu, so we may see far fewer of them soon.

Our allotments have usually been a good place to see many insects in the summer. Last year butterflies were numerous, but there are noticeably fewer of them this year. However, there were a number of butterflies feeding on my allotment neighbour's lavender recently: in one glance I could see 2 Commas, 1 Peacock, 2 Cabbage Whites, 1 Meadow Brown.

There are bumble bees of various types about and I have seen honey bees, although not in large numbers. The allotments recently hosted quite a number of various dragonflies and yesterday our garden at home was visited by a Hummingbird Hawk Moth - something I always love to see.

On the plus side, last year's infestation of Box Moth, and particularly their caterpillars, which devastated many Box hedges, has not recurred. Our Box hedging is recovering well, so I am pleased we did not just remove it all.

Be kind to insects. We have netted our brassicas but have provided the butterflies with alternative plants to munch on, such as Nasturtiums. They have shown their appreciation by laying a few broods of eggs on them, so maybe next year there will be a few more butterflies in Oakley. I also like Nasturtiums - every part of the plant is edible and very tasty, but I always make sure that it does not include a surprise caterpillar.

Steve Nicholas

Steve's Snippet No. 75

Electric bicycles - are they a solution to easier, environmentally sound, personal transport?

I pose the introduction as a question, since anything containing a battery, with all of the controversy that accompanies their production and final disposal/recycling, is a subject of much lively debate.

Since my first electrically-assisted bicycle possibly saved me from a future reliant on motorised transport I think that the 2-wheeled option is certainly less of a target for negative bias.

I suffered quite a severe back injury in 2009 and struggled to get about with the aid of 2 walking-sticks for a couple of weeks, followed by a long period of slow recovery. It was so much fun the first time that I decided to repeat the experience in 2013 when my foot slipped off the pedal of another, un-powered, bicycle as I was applying some effort out of the saddle. My derriere returned to the saddle with some force, jarring my weakened back, and causing a return of the previous injury.

Fortunately, it was not such a long and debilitating recurrence and I was able to get about a bit better than on the first occasion. This time I was able to try cycling to help my recovery, mainly because of the electric bicycle. Its assistance was valuable when ascending anything resembling a climb, but the most advantage was that it enabled me to get out and about with confidence, and get fitter faster.

These days, with a more up-to-date electric bicycle each, Julia and I undertake the occasional cycle outing, carrying a spare battery for the longer rides. We also use a car less if we need to carry loads to or from the allotment, as I use a modified 2-seat kiddy-trailer. The trailer is quite capable of carrying a few bulky items and tools - ascending the Pavenham Road hill ceases to be any problem when electrical assistance is available.

If the roads were perceived as safer, I think that a lot more people might be persuaded to cycle rather than drive. Electrically assisted bicycles certainly make cycling easier, and you can arrive at your destination fresher and fitter, as they have been proven to improve fitness if you choose to contribute more of your own power.

I still have a collection of various cycles requiring pedal-power alone. They are quicker (when you're fit enough) than electric cycles, which are assisted only up to 15.5 mph here in the UK, but you don't generally arrive at your destination as cool as a cucumber. More to follow...

Steve Nicholas



Oakley Village Directory 2025

**Do you want your club/society/business to be
in the 2025 Oakley Village Directory?**

It's **free** to get your details printed, or for a small charge you can advertise. There is no better way to help local people support you than by telling them you live/work in Oakley!

The Directory is printed once a year in January and distributed free to all residents in the village.

To be included in the **2025** directory please contact
Oakleyvillagedirectory@gmail.com



oakley Motorcycle club

The OMC summer started with our annual bike jumble sale on 13th June and we were overwhelmed with the amount of donations from members. At the start of the year we had very little but by summer the amount of stock was massive and raised over £1400 that night. Also we have not stopped there. One generous person donated numerous items of memorabilia, books and posters signed by many of the leading World, British and TT Racers from the last 20 odd years. This is currently being catalogued with the intention of an auction this autumn or winter so I am hopeful several hundred more pounds will be raised!



Over the weekend of 6-7th July OMC was again a checkpoint for the Auto Cycle Union National Road Rally. Every year this sees hundreds of motorcyclists taking part and travelling around the Country over the weekend checking in at some of the 100 plus check points, some of which are staffed like ours. It allows the biker to take a comfort break, grab a snack and a cuppa or just spend a short while drying out as it was somewhat wet! In total we received over 100 visitors so it was a worthwhile event to be involved in.



A few days later on 11th July OMC held the annual American theme night which is an open event. Unfortunately due to the chilly, damp and overcast week numbers were considerably down this year with 54 American show cars and just over 300 bikers in attendance. However, we had back by popular demand the Blues Brothers Tribute Band playing again. They picked out what they

believed were the best American motorbike, which was an old Indian, and the best American car, which was a 1960's Ford Mustang. Despite the weather everyone had a great evening



On 1st August OMC Vice Chair Derek Brown and members of the OMC committee presented Steve Varney from the East Anglian Air Ambulance with a cheque for £2,028 which was money raised by OMC members since April this year. Also pictured below is James Ford, aka Mr Ice Cream Man, who is a significant contributor making regular donations when attending Oakley Club. This takes the OMC total raised for the EAAA to over £46,500!



Finally on 8th August, yet again another miserable overcast night, but what an interesting evening it turned out to be! A group of Dutch riders managed to get lost on the A6 by one of the Oakley turns and an OMC member stopped and directed them to OMC. It turns out they are participants in the annual Dutch "Garbage Run" which this year had 350 riders who set off from Holland in groups to ride to Glasgow, which is their location this year.

The amazing part of it is that all bikes cannot be more than 50cc!! About a dozen of them were in this group who were heading to Grendon, Northants to camp for the night when they missed the

Oakley Motorcycle Club : Continued

A428 turn. Still they seemed to have a great evening with us with food, beer and OMC gifts!

So for those people who saw an odd looking group on old small bikes laden down with luggage and flying flags on the back in Oakley, now you know!



Roger "Baysie" Bays Chair - OMC

Yet again the summer proved to be quite a wash out for our once a month car meets at Oakley Club, with either cancellations or very limited numbers attending due to the weather.

However, we certainly made up for it on Tuesday 13th August with some glorious weather. The classic cars turned out in their droves! That evening over 300 show cars arrived plus an old Fire Engine! Not only was there a fantastic selection of vehicles to view but we are pleased to say that there was a huge footfall from the village as well. So it turned out to be a busy and excellent evening!



Do not forget the last one for this year will be **Tuesday 10th September** .



The Beds Classic Car team



A 90 year old carat at the event! This is a 1934 MG PA Midget





Oakley Sports & Social Club

Family & Sports Bar



KID'S

FRIDAY 1ST NOVEMBER 2024

1PM - 3PM

MUSIC BY DJ STEVO

TRADITIONAL GAMES

KITCHEN OPEN WITH A SPOOKY MENU

PRIZE FOR BEST FANCY DRESS

Halloween PARTY

OAKLEY SPORTS & SOCIAL CLUB

FIREWORKS

02.11.2024

Attractions

FUN FAIR & STALLS
KIDS DJ & BOUNCY CASTLES
MULTIPLE BARS + BBQ & KITCHEN

Main Events

HUGE FIREWORK DISPLAY
NEW: LASER SHOW

Live Music

V.I.PEAS
AMY LEEDER
BLACK RIDGE



Oakley Sports & Social Club
Family & Sports Bar

Christmas Fete & Market

14.12.2024

Market

HUGE VARIETY OF
XMAS MARKET
STALLS

Reindeer

SANTA'S
REINDEER WILL BE
IN ATTENDANCE

Santa's Grotto

MEET SANTA IN HIS NEW
GROTTO AT
OAKLEY SPORTS & SOCIAL CLUB

Live Music

LIVE MUSIC AND
ENTERTAINMENT FOR
ALL TO ENJOY

Rides

FUN FAIR
RIDES COURTESY
OF GUMBLES

...AND LOTS MORE TO BE ANNOUNCED!