

THE RENHOLD MAGAZINE



RENHOLD PARTY IN THE PARK AT HOWBURY HALL

SATURDAY JULY 15TH 3.00PM – 10.00PM

Only 499 tickets available

Ring 07948183164 for tickets

£10 adult, £25 family ticket (2 adults and 2 children over 11yrs)
11 and under free

Poster designed by Jaydn (Reception class)

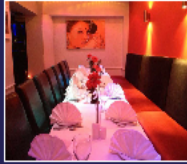
JULY & AUGUST 2023



Grand India

RESTAURANT & TAKEAWAY

EST 1980



We are the only Indian Restaurant in Bedford run by the same family for last 39 years.

39 TAVISTOCK STREET BEDFORD MK40 2RB

39 years and still counting.....

With more than 39 years of experience in the hospitality industry we the Grand Indian family run restaurant have a long and rich history with the dining industry to go along with our love and passion for food we offer a variety of authentic dishes freshly prepared daily by our experienced chefs. The restaurant offers an ambience second to none.



Free Home Delivery Available

OPENING HOURS
7 Days a week including all bank Holidays
5.30pm - 11.30pm

Order Take Away On Line
www.grandrestaurant.co.uk
or call
01234 359 566



SPECIAL OFFERS

Book A Table of 4 and get **£10** off your bill Book a table of 6 & get **£15** off your bill Book a table of 10 & get **£20** off your bill
*Must mention offer when making reservation



GOURMET NIGHT

(Every Wednesday's)
Dining in only 5 Course Meal, Any Start, Any Main Dish*, Any Side Dish, Rice or Nan & Coffee
Only **£10.99**
*Terms & Conditions apply



Contemplation



Bedfordshire Care Group

NAPA LIVING LIFE

Regulated by Care Quality Commission

carehome.co.uk



The Dementia Care Specialist - The People Who Care

Crossways Nursing Home

86 Hookhams Lane
Renhold
Bedford
MK41 0JX

01234 771694

www.contemplationhomes.co.uk

Nursing and Specialist Dementia Care

We have created a safe specialised environment for those living with dementia and nursing needs. Our staff are trained to a high standard using the latest evidence based person centred models for dementia specialist nursing. Activities, events and day to day living all contribute to a wonderful way of life within this fantastic setting.



DIARY JULY AND AUGUST 2023

School dates 2023:

Summer Term	Mon.17th April - Fri.21st July
Half-Term	Fri.26th May - Mon.5th June
Autumn Term	Mon.4th Sept. - Tues.19th Dec.
Half -Term	Mon.23rd Oct. - Fri.27th.Oct.

+++++

Notable Renhold dates & events:

Sat.1st July	Kidchella 11.30am-3.30pm	
Thurs.6th July	WI Wine, women and limericks RVH 7.30pm	p15
Sat. 15th July	Party in the Park, Howbury Hall	p19
Mon.17th July	Creative Club Chapter House 7.30pm	p17
Sat. 22nd July	Churchyard Clear up 9.30am	
Wed.26th July	Parish Council meeting 7pm Village Hall	p23
Sat.19th Aug.	Churchyard Clear up 9.30am	
Mon.21st Aug.	Creative club Chapter House 7.30pm	p17

Church cleaning rota: Postponed till further notice.

+++++

Please be aware that all items for inclusion in the magazine - articles, notices of events, reports on activities, etc, need to be with the editorial team by **the 12th of the month** at the latest.

+++++

Editorial Team contact details:

Editors:	Anne Grant, 4 Brookside, Renhold Tel: 771811 email: anne.grant9@btinternet.com Rod Jones, 1 Church Close, Renhold Tel: 771858
Advertising:	Judy Wootton, 24 Green End, Renhold Tel: 871168
Delivery:	Sheila Day, Tel: 771328
Wild about Renhold:	Tony Ploszajski, Tel: 771170
Roving Reporter:	Pauline Capell, Tel: 771858
IT support:	Ian McIver, Tel: 07968 568057
Stapling Captain:	Richard Deadman, Tel: 01234 341726

+++++

PLEASE NOTE: All content copyright © 2023 Anne Grant. No unauthorised copying or reproduction. The editorial team is not responsible for any opinions, errors or omissions in articles, notices or advertisements submitted to and included in this magazine. Inclusion of advertisements does not imply endorsement of any product or service offered.

+++++

THE RENHOLD MAGAZINE is published in accordance with its Privacy Policy, a copy of which may be obtained by application to the Editor (see 'Contact Details' above).

+++++

Frontispiece: Poster for Party in the Park by Jayden

+++++

This magazine is printed by JCB Printers. Tel 01234 871861. email: info@jcbprinting.co.uk

EDITORIAL by Rod Jones

Hello, again.

Summer is really here now. As I write, it's a glorious sunny day, and I'm in the garden, with a glass of Pimms close by. Cheers. I hope when you read this in three weeks time for tennis fans, it will be the same. "Carpe Diem", my life motto. Let's enjoy it while we can. Much has happened in the last two months. We have a new Mayor, (well done Tom, it was a very popular result round here,) a new Borough Councillor (well done Nicky,) our Parish Council are voted back in, and we got a favourable result in the EW Rail saga. Unfortunately Anglian Water, as expected, are still causing a lot of traffic problems. I live next to the school, and I know it will soon become a whole lot worse, but we have to live with it. The world is changing rapidly.

There is a lot to report on, in this issue. This is the time of year when garden parties, sports days, festivals etc are all the rage. On 1st July there will be the school festival Kidchella. This has come after countless hours of preparation, and if last year was anything to go by, it will be a lot fun. 1st July, get your diaries out now!

There is also the Party in the Park on 15th July at Howbury Hall. Only 499 tickets available. See all the details in the poster on p19. Great entertainment with live music, food and drink or bring a picnic, stalls, games, workshops, sports, raffle with a helicopter ride as the star prize and much else. It is all for a good cause, repairs to our church. So book now, to avoid disappointment. The raffle tickets are now on sale from Amanda Quince (870704).

Also, raising much-needed funds for All Saints, a new Creative Club is being set up. Details on p 17. Although the church floor is still not ready, we hope it soon will be, as the Bishop of Bedford is due here on 30th July. Please read Rev. Ian's letter, as he details all the planned events. He is even sorting out ideas for next Christmas, and we are still in the beginning of June. Also, Luton Town FC get a mention, now they are in the Premier League. Good luck, you Hatters.

Now, in our magazine, we do like to focus on things of interest, and what could be more interesting than toilet rolls? I jest you not. Our roving reporter on p10 has dug up an interesting new initiative, well worth a read, and we wouldn't print it if it wasn't in the best possible taste. An unusual angle on a bog-standard topic. (Sorry, what a terrible joke, I couldn't resist it!). Finally Anne has printed a very good article on fading memory, a controversial subject. I regularly forget where I've left my keys. I also occasionally have to wrack my brains to recall a name. This article, which we were invited to print, is extremely positive, and advises us that this is not necessarily a bad omen for the future, but is natural as we get older. I found this very hopeful and encouraging, and I do hope you read it. The last couple of years have been tricky, but there is a lot to look forward to in the next few months. The weather forecast is good. Wimbledon starts soon. We always try to put a positive slant to our magazine, so Carpe Diem. Relax, and enjoy the summer.



Martyn Smith
Arboriculturist
MS Tree Care

All tree and hedge work undertaken

37, The Briars, Kempston

Bedfordshire MK42 7RB

Tel: 01234 851235 Mobile 07712 050068

Email: mstreecare@btinternet.com

Quality made to measure blinds

Verticals, Venetians, Romans, Rollers & Perfect Fit

Free measuring service, free fitting

Top brands at competitive prices

Let the showroom come to you

Join the empire of happy customers!

Call
us now
for a free,
no obligation
quotation!



**EMPEROR
BLINDS**
Quality made to measure blinds

01234 347110

www.emperorblinds.co.uk
enquiries@emperorblinds.co.uk



All Saints Church Services for July and August 2023

All services taken by Revd Ian Smith except where stated

JULY

Sunday 2 July	11.00am	Parish Communion
Wednesday 5 July	11.30am	Prayers for community and Midday prayer

Sunday 9 July	11.00am 6.00pm	All Age Worship – ? Evensong (BCP) with hymns <i>Richard Deadman/Revd Ian Smith</i> Night Prayer (CW)
Wednesday 12 July	7.30pm	

Sunday 16 July	11.00am	Parish Communion at Howbury Hall
Wednesday 19 July	10.00am	Holy Communion (BCP) <i>Revd. David Powell</i>

Sunday 23 July	11.00am	Sung Morning Prayer (BCP) <i>Richard Deadman/ Revd Ian Smith</i>
Wednesday 26 July	7.30pm	Compline

Sunday 30 July	11.00am	Parish Communion <i>The Bishop of Bedford</i>
----------------	---------	--

AUGUST

Wednesday 2 August	11.30am	Prayers for the Community
--------------------	---------	---------------------------

Sunday 6 August	11.00am	Parish Communion <i>Revd David Powell</i>
Wednesday 9 August	7.30pm	Night Prayer

Sunday 13 August	11.00am 6.00pm	All Age Worship – Peace Garden Evensong (BCP) with hymns <i>Richard Deadman/ Revd Ian Smith</i>
Wednesday 16 August	10.00am	Holy Communion BCP <i>Revd David Powell</i>

Sunday 20 August	11.00am	Parish Communion
Wednesday 23 August	7.30pm	Compline

Sunday 27 August	11.00am 4.00pm	Parish Communion Hymns and Pimms
Wednesday 30 August	7.30pm	Prayers for healing

EACH MONDAY	9.30am	Morning Prayer
EACH THURSDAY	4.00pm	Evening Prayer

DAILY OFFICES – Revd Ian says the Daily Office in church at the following times. You are warmly invited to join him at this short service.

EACH MONDAY	9.30am	Morning Prayer
EACH THURSDAY	4.00pm	Evening Prayer

LETTER FROM THE VICAR

This time of year we seem to be looking forward – our young people are looking forward to the end of the school year where they will either move up to the next year, or move on to the exciting opportunities ahead at a new school. Whatever their situation, I am sure that each and everyone of them (and their teachers) are looking forward to the summer break, a period of rest and recuperation, a time for families, friends and always time for summer fun. Many football fans are looking forward to the start of a new season, when the joys or frustrations of last season are put behind them, and the potential for great things this season are in the heart of supporters of every club – some supporters may be even more enthusiastic than usual this year, especially if your team has gained promotion to the Premier League to play with the “big boys”; OK, even if it was through a penalty shoot-out at Wembley (what a day. Come on Luton!!)

We as a church continue to look forward too, even if the liturgical season is called “Ordinary Time”, I know that here in Renhold it will be far from ordinary. Firstly, and most importantly, we are (still) looking forward to moving back into church at the completion of the floor restoration works. We appreciate that the project has overrun significantly, but work is well on the way and as I write, many of the incredibly heavy York stone slabs are now in position, being held in place by yet more lime mortar which is taking time to dry out naturally before we can walk on it and place the heavy church furniture back in place. The progress made in recent weeks may appear slow, but each one of those heavy stone slabs has required fine cutting to ensure the best possible fit into their unique place in the jigsaw puzzle, and our beautiful medieval building, like many houses built today, is not always square, but we are getting there, honest!!

We are also looking forward to the Parish’s “Party in the Park” on 15th July. This event is going to be really special, and we cannot wait to be part of the party, which is going to help us complete payment of those floor restoration bills. This event at Howbury Hall promises to be full of fun and entertainment, with tickets limited to 499, but at the time of writing there is still availability so please contact Amanda Quince at pace.quince@gmail.com for more details and to reserve a place

As I advised in the last edition, we are looking to extend the range of services that we offer throughout the summer, some will be different to what you would expect from church. On Sunday 16th July we are holding our morning service at Howbury Hall at 11:00am, this will be an outdoor service which I hope will bring a different dimension to our worship. On Sunday 30th July our morning service will be more traditional and led by the Bishop of Bedford. On Sunday 13th August we will be heading outside again when our family service will take place in the Peace Garden at Renhold Primary School – this is the most special and spiritual of places which is well worth experiencing on its own, and here our service will be interactive and fun, but with that serious message of course. Another outdoor service takes place on Sunday 27th August when we hold our “Hymns & Pimm’s” service at 4:00pm in the beautiful grounds of our church, all hymns will be well known, well-loved favourites and I am sure the liquid lubrication of the vocal chords will make this a service to remember. (Continued overleaf)

Again, as advised last month we have our second Christmas Tree Festival in December where we are looking to present more than the 21 amazing Christmas Trees exhibited by people of our Parish and its organisations last year – please do use your holiday this summer to get in the creative zone and make your first plans to display your tree at this year’s festival. As usual, a full schedule of services is listed within this edition; we continue to use the All Saints Renhold Facebook page to Live-stream services where possible, with service sheets being available on our website www.all-saints-church-renhold.org for those who are unable to attend church in person. Enjoy your summer, take care and stay safe - God Bless... Rev. Ian

A double CD of Organ Music is on sale
THE CHURCH ORGANS OF ROXTON ST MARY MAGDALEN AND
RENHOLD ALL SAINTS’ PLAYED BY PAUL EDWARDS

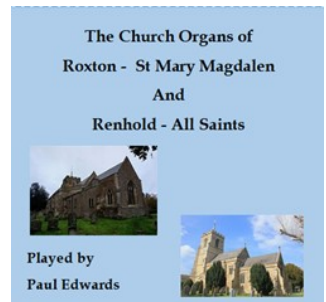
£10.00. From Paul Edwards, or through either church.

A limited-edition CD comprising 2 discs of music, recorded over the past three years on the organs at Renhold and Roxton.

52 pieces of delightful and interesting organ music which will help to preserve the sounds of these instruments for posterity.

Also included is a well-researched booklet giving comprehensive detail of the organs, and of the individual pieces. These have been drawn from 6 centuries to the present day; and were chosen not only to give pleasure but also to illustrate the versatility of the two organs.

All profits from the sale of these discs will be shared between the churches to help with the maintenance and preservation of their organs.



North Beds Ramblers walk every Saturday

- July 1st Walk from Ampthill 10am 6 miles plus summer picnic
- July 8th Walk from Riseley Fox and Hounds 10am 7 miles
- Or Walk from Riseley Primary School 1:30pm 6.4 miles
- Or join us all day from Riseley Fox and Hounds 10am 12 miles
- July 15th Walk from Silsoe Church 1:30pm 7 miles
- July 22nd Walk from St Ives Park and Ride 10am 12 miles
- Or Walk from North Crawley Church 1:30pm 7 miles
- July 29th Walk from St Neots 1:30pm 6.5 miles

Tel Margaret Sawyer 07780 933729, FB North Beds Ramblers,
www.ramblers.org.uk/north-bedfordshire

Pebbles Beauty Room

Fully Qualified & insured
Beauty Therapist
Located in Wilden,
Bedfordshire
Home Based Beauty Room
By Appointment only basis

www.pebblesbeautyroom.co.uk
07496332609 / pebblesbeautyroom19@hotmail.com

State Registered Podiatrist Nicki Granby (BSc Hons) MCHS

Chiropodist / Podiatrist
HPC Registered



Home Visits
Individuals &
Nursing Homes

Flexible Appointments

t: 07773 652099

Records, Vinyl, CDs purchased



Have you any old vinyl records?

CDs/posters/music memorabilia?

Call Steve 07813
240560

TT Garden Services

General Maintenance
Tree, Hedge & Lawn Cutting/
Strimming
Patios & Fencing
Block Paving & Driveway's
Commercial & Domestic Work



For all your gardening needs, contact
Trevor
Bedford 771485
Mobile 07801102109



Antiques Purchased

Cash paid for unwanted items

Jewellery - Gold, Silver & Vintage
Watches • Militaria • Coins
Old Toys • Tamiya R/C • Trains
Nintendo • Enamel Signs

Call Paul 07549 086 313

I Heard it on the Radio Pauline Capell

I sometimes think that if I was asked to choose between owning a radio or a TV I'd choose the radio every time. Besides my regular favourite programmes, I often tune in whilst driving around, and invariably I hear all sorts of interesting snippets of the "well, I never knew that" variety. I thought I'd share a few of these with you.

'Who Gives a Crap'

For instance, have you ever heard of a company called 'Who Gives a Crap?' Now that's a Marmite title – you either love it or hate it, but bear with me, as it's quite a concept. It manufactures 100% recycled toilet paper, and its unique selling point is to donate 50% of its profits towards building toilets and improving sanitation in the developing world. It employs over 200 people in 8 different countries. 2 billion people globally have no access to adequate sanitation and 700 avoidable child deaths happen everyday as a result. I heard the story on a radio 4 programme called You and Yours Gap Finders. Simon Griffiths and his co-founders launched the brand in 2012 in Australia with a crowdfunding campaign. Simon sat on a toilet in their warehouse for 50 hours on a live web feed, refusing to move until they had raised \$50,000 and had enough pre-orders to start production. There was a set back almost immediately because, in their enthusiasm, the first design was missing a fundamental element - perforations !! Back to the drawing board, and soon individually wrapped, brightly coloured packages were being rolled out. At the bottom of each box was an emergency roll wrapped in red to remind you to re-order. Initially it was sold on a direct to customer basis sending large boxes to your door. In 2017, it launched into the UK and the brand is now expanding its retail presence and, rumour has it, will soon be on our supermarket shelves. Keep a lookout.

Underground vaults

You have probably heard of the underground seed vault in Norway, a secure back up store of over 1 million seed samples buried deep in the Arctic permafrost to preserve crop diversity. But you may not have heard that scientists are launching another such storage vault for human poo. The aim is to preserve microbes, the trillions of bacteria that live in our guts. Microbiota diversity is crucial for our health and wellbeing, even our survival, and storing samples from every corner of the world for posterity means that current bacteria, long lost at some stage due to changes in our diet etc. might one day be revived and used to treat disease.

Much loved piano given funeral and cremation

On a mountainside in Wales overlooking Abergavenny, you could take a guess at what you might expect to see, but it is doubtful that would include one baby grand piano and one upright piano. They had been dumped, presumably by someone with a big van and a lot of strength. This story led to an article about how it is almost impossible to get rid of an unwanted piano nowadays, even if you are prepared to give it away. One man, who has taken his trusty piano round to various gigs for years, decided it was time to exchange it for a keyboard, so he advertised it as free to a good home and got no takers. He couldn't bear to see it chopped up so he invited his friends to a funeral where he delivered a eulogy to his old friend, played it one more time and cremated it.

Well, I never knew that.

Auction Sales & Valuations

Valuation, collection and auction service of individual items through to complete property and commercial clearances.

Call for a free no obligation quote or email info@peacockauction.co.uk

SALE ENTRIES NOW INVITED

Antique & Modern Furniture • Clocks • Books • Ceramics & Glassware • Pictures & Prints • Bicycles
Jewellery & Watches • Collectables • Garage Tools & Equipment • Household Electrical Items • Office
Furniture & Equipment • Retail Products & Stock • Vehicles • Horticultural & Commercial Equipment
Building Materials • Garden Furniture & Effects

www.peacockauction.co.uk



W&H PEACOCK
AUCTIONEERS & VALUERS

01234 266366



Eastcotts Park,
Wallis Way,
Bedford,
MK42 0PE

GEORGE GILLESPIE ROOFING CONTRACTOR

Council Approved

Lead Work

Chimneys

Insurance Work

New Work



Strip and Retile

Facia and Soffits

Repair Work

Slating

All Guaranteed

8 Thor Drive, Bedford, MK41 0WP
Tel. 01234 216608 Mob. 07961 986972

Our lovely Embankment Pauline Capell

There was no need to go all the way to Amsterdam this spring to see stunning displays of tulips . You could just take a walk up the Embankment in Bedford and feast your eyes on some stunning displays. The colour theme this spring was pink, yellow and white , colours associated with optimism, cheerfulness, romance, joy and warmth. When the River Festival is on, the colours are blue and white with bits of yellow, and the coronation themed display for the summer will, of course, be red, white and blue. I took a walk on a sunny day to see the spring tulips at their best, and against a backdrop of rowing boats on the river, the weeping willows dipping down towards the water and flocks of swans and geese, what could be better ?

I was lucky enough to be a guest at an Inner Wheel meeting where the speaker was Claire Pick, who is in charge of our parks and green spaces in Bedford. Claire was brought up on a farm and the great outdoors is her passion, taking up the post of Environmental and Viability Officer for Bedford in 2017. She has many areas of responsibility but her talk was specifically about her lead role in the design, tender and purchase of the bedding displays, particularly the Embankment Gardens, surely Bedford's jewel in the crown. Bedford's parks and open spaces have won Green Flag awards, sometimes many times over, like Priory Park which has consecutively won 21 . They are judged under 8 sections such as a welcoming place , well maintained and clean and biodiversity, and there are 27 criteria to meet under these headings. Claire herself is a judge (though not of course for Bedford) , a crafty move as she gets to know exactly what is required.

The Embankment is split into 4 sections, and the spring display contained an eye watering 46,000 tulip bulbs and 21,000 filler and edging plants . All the plants are grown from seed, and Claire has to find nurseries that offer the best value for money within a strict budget. Almost all the bulbs are sourced from Holland, but wild meadow areas, like those near the Mound, feature native mixes, with special attention to those which are pollinator friendly. Some of the bulbs are planted by machine, and Claire told us to look out for it at planting time, as it is fascinating. Amazingly, for those of us who have their bulbs dug up by squirrels in our gardens, squirrels down on the Embankment are better behaved and do not present a problem.

Another question was whether the bulbs are replaced every year, and the answer was yes. Their first year is always the best, and Claire wants them to be at their most vibrant for public enjoyment . However, they are not wasted . The bulbs are given to schools, charities, and Care Homes thus "spreading Embankment joy across the borough".

This year is to be Claire's first attempt at carpet bedding to celebrate Bedford Rotary's Centenary. It will consist mainly of foliage plants with logos and lettering also picked out in plants. We have no doubt it will be eye catching. Sadly she does not have a garden of her own as she lives in a flat, but she has aspirations. Go out and enjoy.

You can go to the website : Bedford.gov.uk/leisure-parks-and-sport, select 'parks and open spaces', then select 'enjoy our parks and open spaces'. You can give some feedback on your enjoyment and appreciation of the flowers in the town, or even sponsor a tree in a park of your choice in memory of a loved one, or just because it's a lovely thing to do.



10,000 ceramic daffodils at Lowther Castle

Do you remember the 888,246 ceramic poppies 'planted' at the Tower of London which filled the moat between July and November 2014? Each represented a British and Commonwealth military fatality during WW1. They were sold to the public for £25 each and 10% of the sale price went to one of 6 service charities.

The idea has been revived and 10,000 ceramic daffodils have been 'planted' in the grounds of Lowther Castle near Ullswater in memory of William Wordsworth's poem, and the lines "Ten thousand saw I at a glance, Tossing their heads in sprightly dance." They are on display from April 24 – June 24 and can be purchased for £25 each, with a percentage of the cost donated to 6 small charities that don't receive significant exposure or funds, such as Friends of Ullswater Way. Once the installation is dismantled, the daffodils will be parcelled up and posted to their buyers.

I purchased one for my sister who loves daffodils and I was number 8214 ! If you would like one, another 5,000 have been produced to meet demand. www.tenthousanddaffodils.org
Pauline Capell



OFFICE FOR NATIONAL STATISTICS. COVID INFECTION SURVEY

I was part of the ONS Covid Survey giving throat swabs and blood samples every month for about 3 years and received a letter recently of which this is an excerpt.

"The pandemic is one of the most consequential events in modern history. To better understand the virus, the CIS was launched in April 2020 at great pace.

Since then, over half a million of you have shared 11 million swabs and 3 million blood samples, which we have gathered and analysed. The scale of the survey is truly astounding and is one of the reasons why the CIS is recognised as a ["shining example of random sampling"](#).

Frequently cited by the Prime Minister, First Ministers, and Chief Medical Officers, your data helped governments in all four UK nations manage the unprecedented challenges faced during the pandemic.

Known globally as the 'gold standard' for infection analysis, the survey has been recognised by the Centres for Disease Control and Prevention (CDC) and the World Health Organisation (WHO). It has received widespread praise from politicians, academics, and the media alike and is regularly cited as the 'most reliable measure of the prevalence of coronavirus.' Furthermore, it has won multiple awards including the [Harding Prize](#) for Useful and Trustworthy Communication and the prestigious [Campion Award for Excellence in Official Statistics](#)." Anne Grant

Renhold Village Clubs 2023

Group	Contact	Tel.	Day	Time	Place
Bridge	Rod Jones	771858	Every Mon. Every Fri.	9.45-1pm	St. Marks Church Brickhill
Brownies	Kim Dellar	267150	Every Thurs.	6.15-7.45pm	RV Hall
Carpet Bowls	Chick	838651	Every Mon. Every Wed.	2-4.30pm 7-9.30pm	RV Hall
Chapel Coffee morning	Albert Brown-ing	722689	2nd Tues.	10-12noon	Chapel
Creative Club	Teresa Trangmar	07788402 441	3rd Mon.	7.30-9.00pm	Chapter House
Luncheon Club	Yvonne Potter	771495	2nd Wed.	12.30 for 1pm	
Pudding Club for carers	Anne Grant	771811	1st Tues.	2-3.30pm	4, Brookside
Reading Group	Pauline Capell	771858	1st Fri.	4pm	1, Church Close
Renhold pre-school group	Vicky Thompson	771724		Term time	
Stitchers	Jackie Croot	870271	3rd Thurs.	10.30-12.30pm	Chapter House
Table tennis	Rod Jones	771858	Every Mon. Every Wed. Every Fri.	1.30pm 10.30am 10.30am	Church Lane Community Centre
WI.	Jan Tozer	297456	1st Thurs.	7.30pm	RV Hall
Yarn Craft Group	Marion Sutton	217647	Alternate Fridays	10am-12.30pm	Wilden Village Hall

In view of our uncertain times please ring to confirm each club is running.
RV Hall = Renhold Village Hall; the Chapter House is at the back of All Saints Church.

Mobile Library Times July and August 2023

<u>Location of Mobile Library</u>	<u>Time</u>	<u>July</u>	<u>Aug</u>
Renhold - Green End	10:00 - 10:15	11,25	8,22
Renhold - Home Close	10:40 - 10:55	11,25	8,22
Renhold - Ravensden Road	11:00 - 11:15	11,25	8,22

Times will vary slightly due to traffic conditions, etc. For further information about the mobile library service please contact Kempston Library tel. 01234 276453

RENHOLD WI

Wine, Women and Limericks!

Thursday 6th July, 7.30pm
Renhold Village Hall



This limerick sets a low bar! Do please write one and bring it. Or find one already written. Or both.

Prizes for the best 'own limericks' and 'found limericks'.

A lady joined WI,
She thought it might make her cry.
But the speakers were good;
And so was the food (fud?).
She was pleased she gave it a try!

An entertaining evening, with wine and nibbles.
Visitors welcome. £4.50

Anglian Water -water main renewal

Phase 3a has required a full road closure from Wilden Road / Church End and access to the church and school has been from Top End. From 31st July to 22nd Sept. there will be a full road closure and access to church and school will be from Wilden Road

Teresa Moon is our Village Agent and is here to help people in Bedford Borough villages to access the services and support they might need She can also help with money issues. Her services are confidential and free and she can visit you at home. Just call Freephone 0800 039 1234.

Jokes from G. Greenwood

Mirror, mirror on the wall..... What the hell happened?
I often worry about the safety of my children, especially the one that is rolling his eyes at me and talking back right now!!
Dear Wine, we had a deal. You were to make me funnier, sexier, smarter and a better dancer. I saw the video, we need to talk.

In the spotlight Andy and Emma Webber

By Rod Jones

Four years ago, you could walk past the dilapidated barns near the church, and look at the old cars, engines, and farm equipment through the gaps in the door near the pavement. Today, all is changed. The barn conversions are now complete, and the buildings look modern and imposing. Andy and Emma live in the one nearest the church, and as they are both on our magazine delivery team, it gave me the chance for a chat (and to be nosy)! A profile:

One born in Basingstoke, (Hampshire) the other in Gillingham, (Kent), Andy spent his early years growing up in Portugal and Singapore before returning to the UK. They met at Sixth Form college 31 years ago whilst both living in Fleet (Hampshire), married in Singapore in 2007 and before moving to Renhold they lived in High Wycombe, (Bucks) for 13 years. From university, Emma has worked for a well-known tour operator in Central Bedfordshire. However, the long drive to work from High Wycombe was becoming a chore, taking up far too much of her time, so they decided to move closer to her job. They were under pressure to buy as their previous home unexpectedly sold within two weeks, and having exhausted all locations closer to Emma's work, they expanded their search and came to look at the Barn which they had seen online as an artist's impression of where they live now. When they first came to look it was far from ready, in fact just a collection of run-down agricultural buildings and a set of blueprints of the potential, but they really liked the location and the prospect of a quiet village life.

At school, Andy specialised in business studies and finance, while Emma undertook studies in leisure and tourism. His first job was as a supermarket butcher but he had higher ambitions than this and had a lucky break when his father brought him into the dental supplies business he managed. Moving from dental into medical devices, he formed a career within cardiology company's specialising in heart-screening. Pre-pandemic, his work took him all over the world. In one particular year, he spent 300 days overseas, has now crossed the Atlantic 218 times, been to Canada on 89 occasions and Australia on 37! However, his favourite place is home here, in Renhold with his wife and is thankful the changes in the way people work online post Covid have stopped the extensive travel. He and Emma have no immediate family of their own, but their friends and relatives are always keen to visit and sample the peaceful country life that we all enjoy.

Andy has in fact indirectly featured in one of our earlier issues. From a very young age, he has always been fascinated by cricket, and at his request, we recently featured an article about expanding Wilden cricket club and engaging with other villages to create more awareness of the team. He no longer plays himself; his days as opening batsman having been cut short by injury. However, he still plays an active role in the club, and is their social secretary and community engagement manager. Following our magazine article, which he hoped would attract interest at the junior level, the club enjoyed a very positive response to their All Stars programme, and he thanks us for our generous support. There will be several other community events on offer throughout the summer both at our Village Hall and the one in Wilden. Also watch out for The Polden Cup (27th August), a hoped-for annual tradition, 20 over match and family BBQ, Renhold (Polhill Arms hosted team) v Wilden!

Moving to Renhold has been a dream move. They both love the country walks, and a great village atmosphere. They have made new friends at The Polhill Arms and with neighbours alike. Andy promised me that very soon he will pen an article for us about what it's like to live in Renhold. I look forward to this.

Emma and Andy Webber



All Saints' Church Renhold

Creative Club at the Chapter House! Every 3rd Monday 7:30pm



Come and join us for 'Creative Club' at All Saints Church Chapter House, Renhold every third Monday of the month starting at 7:30 pm and finishing about 9:00 pm.

The aim of the club is to get together once a month to enjoy being creative and making things.

The cost will be £5 per session, to cover a donation to the Church and cost of materials etc. There will be teas and coffees, soft drinks, cake and biscuits.

DATES OF MEETINGS in 2023 – all at 7:30pm:

Monday 19th June
Monday 17th July
Mon 21st August
Mon 18th September
Mon 16th October
Mon 20th November
Mon 18th December



At our first meeting we made cards, gift tags and wrapping paper using stamps & ink.

Please let me know if you are interested and if you would like to attend and I can add you to my mailing list . Feel free to ask any questions. Teresa – t.trangmar@gmail.com 07788 402441

LA Auto Services

quality and value automotive services

For all your motoring needs:

Car Servicing & Repairs
MoT Testing (incl. Class 7)
Tyres, Wheels & Exhausts
Bodywork Repairs
Winter & Summer checks, etc.
Free local collection & delivery
(by prior arrangement).

Established
1983

Up to 50%
cheaper
than
main dealer
prices!

3 - 5 Shuttleworth Court
Shuttleworth Rd
Bedford, MK41 0EN

Tel: (01234) 354237 / 351431
website: www.laautos.co.uk
email: service@laautos.co.uk



Select Travel Holidays

Home of Cruise Select

As an independent, family owned travel agency,
we're more than just travel agents; **we're travel specialists.**

Sometimes, nothing beats speaking to a human, especially a friendly professional!

01234 326778

www.selecttravelholidays.co.uk

sales@selecttravelholidays.co.uk

24 Mill Street, Bedford, MK40 3HD

BOOK LOCAL, TRAVEL THE WORLD.



BOOK WITH CONFIDENCE ABTA & ATOL protected





SATURDAY JULY 15TH

RENHOLD PARTY IN THE PARK

3:00 GATES OPEN AT HOWBURY HALL
3:15 WELCOME AND PRESENTATIONS
4:00 LIVE MUSIC
10:00 CLOSE

Stalls 3:00 - 7:00

SPLAT THE RAT, TEDDY TOMBOLA, PICK A SPOON, GUESS THE NUMBER OF SWEETS IN THE JAR AND NAME THAT BEAR
WATERCOLOUR PRINTS, TROPIC SKINCARE, ART DISPLAY AND MANY MORE

Food & Drinks

BARBEQUE
TEA COFFEE, SOFT DRINKS
CAKE, ICE CREAM
BRING YOUR OWN DRINKS & PICNIC

Workshops 4:00-7:00

POETRY, STORY TELLING,
ART AND POTTERY

Live Music 4:00 - 10:00

TODDINGTON BRASS BAND
DON'T FREAK OUT
FYNNIUS FOGG

Sports 4:00-7:00

KWIK CRICKET, SHORT TENNIS &
SOCCER SKILLS

Raffle 8:45

STAR PRIZE HELICOPTER RIDE

CALL 07948183164 FOR TICKETS

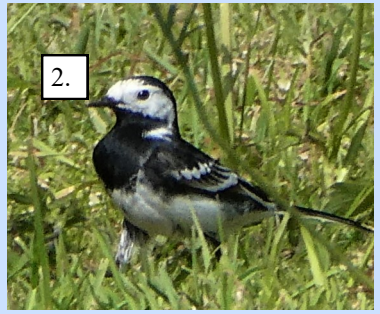


WILD ABOUT RENHOLD (see opposite)

1.



2.



3.



4.



5.



6.



WILD ABOUT RENHOLD by Tony Ploszajski

1. Starling

Starlings have been roaming around the village in small post-breeding flocks of adults and juveniles, one of which alighted in our garden one evening and proceeded to enjoy the benefits of our bird bath. The birds in the photo are all adults, with their glossy dark plumage and the small star-like spots that give them their name. Numbers are sadly declining, both locally and nationally. In November 1951, a roost at Elstow held 250,000 birds (the county record site count) and as recently as 1982, a roost in Leighton Buzzard involved 75,000 birds. This century however, the largest flocks have been numbered in the low thousands, but they are still a spectacular site going to roost in their swirling collective murmurations.

2. Pied Wagtail

Pied Wagtails are also quite frequent around Renhold. A pair nested under our solar panels this year and the adults have entertained us by catching insects around our garden pond. Like Starlings, Pied Wagtails often roost communally in the winter. I can recall them in the bare branches of low trees in Bedford town centre, looking almost like leaves given the numbers festooning each tree. Their preferred summer diet of flies means that they often frequent stables and horse paddocks around the village, flying up onto roofs when disturbed.

3. Kestrel

Kestrels like to find a high vantage point to watch out for prey on the ground below. They achieve this either by hovering over a fixed point or finding a structure like this electricity pylon. This bird is a male, identified by his grey head and grey tail (just visible in the photo above the black band on the end of its tail). Also visible is the dark 'moustachial stripe' below the eye. It is believed that this feature is to cut down on any 'glare' from its otherwise pale cheeks, that might interfere with its laser-like focus on small prey items. The same custom has been adopted by American Football players who often apply a smear of dark greasepaint to their cheekbones in the belief that it absorbs sunlight and harsh stadium lights - a case of humans learning from nature!

4. Buttercups

It has been a particularly good spring for Buttercups this year in grassy fields around the village. Technically, their full name is Meadow Buttercup and they are common in a variety of sunny habitats in particular meadows and pastures. It flowers between April and October but is most abundant in the late spring.

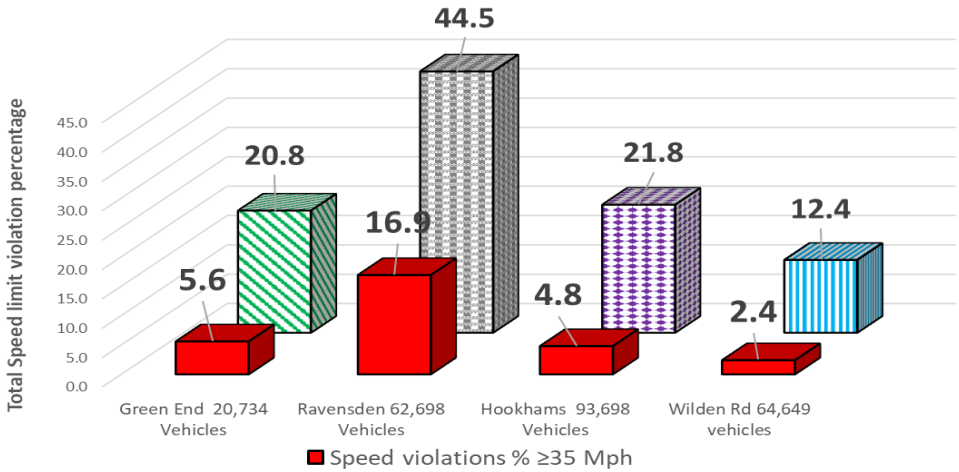
5. Crimson Clover

Crimson Clover is another striking flower of the fallow fields. It is also known as Italian Clover and is not native to the UK but seems to have spread quite successfully locally. It is very effective at fixing nitrogen from the air and improving the fertility of the soil, so will hopefully benefit the yield of agricultural crops when the fields rotate back to cultivation.

6. Common Vetch

Common Vetch is a member of the pea family, so has climbing tendrils like other pea species. They seem to thrive in some of the fallow fields around the edge of the village and have a long flowering period through spring and summer. The flowers turn into small pods that contain the seeds or peas.

Speed Indicator Device data May 2023



As the road has been closed at Top End since 11th April it suggests that the responsibility for the majority of the violations in Green End lies with the *residents* of Green End and Top End driving in excess of the speed limit. Ravensden Rd data only reflects vehicles from 8th May due to a previous defect in the device (now rectified). Martin Warwicker

Renhold Parish Council June Update

BEDFORD BOROUGH COUNCIL LOCAL PLAN INSPECTION HEARINGS LATEST – PROPOSED RENHOLD BUSINESS PARK

The public inspections started on Monday 12th June. The Parish Council have been represented by Councillor Nicky Gribble and Clerk, Lizzie Barnicoat at three sessions so far at the time of writing. The Inspector has been questioning the local authority on their aspirations for science park, campus style development, seeking evidence on such a need for this style of business use. They challenged the job profile data they have based assumptions on from 2011 as being outdated. The Inspector has welcomed input from Renhold Parish Council on some specific items and is taking into consideration the recent East West Rail announcement during the sessions. The Parish Council attention now turns to the EMP6 site specific session, where the Renhold site will be discussed in more detail.

EAST WEST RAIL LINE FINAL ROUTE ANNOUNCEMENT

The Parish Council sent representatives to the Local Representative Groups meeting on 5th June. EWR having recently published their preferred route for the Bedford to Cambridge section following the non-statutory consultation during 2021, have confirmed the preferred route is Route E Option 1. It has a slight variation to incorporate part of option 9 to circumvent Roxton and bring the line into a station at Tempsford. EWR. They did give consideration to Route B, as suggested by the BFARE group however, rather than focus on a route significantly south of the River Ouse, they examined two alternatives referred to as 'varsity and varsity hybrid'. This utilized parts of route 51 (the old rail line) and were a variant of the so called 'B+ Route'. Upon examination, they concluded that these alternatives were not feasible. This is fortunate, as their passage ran parallel with the A421 and would have directly impacted Renhold (Water End and Green End in particular) and the surrounding area and infrastructure. (Continued opposite)

The proposed alignment exits Bedford Midland station to the north (which will be six tracks and require the demolition of housing in the 'Poets' area of Bedford), past Ravensden to its west, eastward above Wilden and then crosses the A421 near Roxton until it eventually meets the main GNR rail line at Tempsford. There appears to be no infrastructure impact to Renhold, but whether construction traffic and material movements would affect Renhold's transport network is currently unclear. The Parish Council will continue to be represented on the Local Representatives Group and engage with EWR to ensure any disruption of the transport network around Renhold has mitigation features inbuilt. The proposed route will be going to Statutory Consultation in the first half of 2024.

YOUR PARISH COUNCIL NEEDS YOU.....

Please also remember there are **currently two Parish Council vacancies** and there is lots to get stuck into with the Parish Council being active in making a difference with a number of village matters across the whole parish. It would be great to hear from you, so please do get in touch with the Clerk Lizzie or any member of the Parish Council.

RURAL BULKY WASTE SERVICE IN THE PARISH

This service will be back on Saturday 8th July 2023 at Wilden Road, Salph End by the Lay-by Near Numbers 3-9, Salph End from 08:00 - 09:00am. Please note times are approximate to allow travel between sites. Please do not leave rubbish at the site if the collection vehicles are not there.

BUS SERVICE ISSUES GREEN END – MEETING FEEDBACK

Councillors Gribble, Roberts and Warwicker met with Thomas Manship from Grant Palmer to discuss and explore possible ways to overcome the cessation of the No. 27 service due to the road closure. These included: reversing the bus in either Becher Close or on the Green, manoeuvring around the Green, operating a smaller vehicle. Grant Palmer unfortunately informed Councillors they will not perform reversing manoeuvres, apart from in the depot, due to health and safety issues raised by their Risk Assessment (e.g., visibility) and that the drivers' agreement also precludes such activities. The bus is 8/9 metres in length and the Green layout and resident parking does not provide sufficient space for pivot-point turning. Also, they do not have any smaller vehicles and cannot lease any due to the terms of their contract. Grant Palmer have though pleasingly confirmed once the roadworks are complete the 27 service will return to normal line of route and serve Renhold. If Anglian Water are able to complete works with phased lights, Grant Palmer will endeavour to return prior to the finish date in September.

ANNUAL ELECTORS MEETING

Thank you to everyone who came along to the recent meeting, it was lovely to hear from the various village groups and organisations on what they have been up to and what plans they have for the future. PC Vito Napoli came along with PCSO Stephen Tarabella from the local Police team as well as Sarah Stephens, Manager for Community Safety and Resilience from Bedford Borough Council. They gave insightful information in particular on how residents can be supported if they are experiencing anti-social behaviour. Please do report any incidents directly to them, and PC Napoli did encourage residents to ring the Riseley station directly on 01234 842866 so they can act promptly. There was also a lengthy discussion on highways safety in the parish.

GETTING IN TOUCH WITH THE PARISH COUNCIL

Remember you can make contact with Lizzie, the Clerk, or any Councillor on any village matter. Please contact Lizzie, the Clerk, directly on 771702 or at lizzie_barnicoat@hotmail.com The next Parish Council meeting will be on Wednesday 26th July 2023 at 7pm to be held at Renhold Village Hall on Wilden Road, and as always everyone is most welcome.

Some interesting statistics

The number one and main thing that should jump out at all of us is the percentage of people in the world that live to be over 65! Meaning - If you are reading this e-mail, then you and I ARE one of a very few fortunate people!

8% of the world population are over 65 years old

Think about this - If you live in your own home, are able to eat full meals & drink clean water, have a mobile phone, can surf the internet and went to college, you are in a miniscule percentage of the population and are a highly privileged person this day. (This equates to being in the less than 7% category)

If you are already over 65 years old - be content, grateful and thank God; cherish life, grasp every moment.

If you did not leave this world before the age of 64, like the 92 persons who did pass before you, you are truly blessed amongst mankind. Take good care of your own health. Cherish every remaining moment.

If you think you are suffering memory loss, it's called anosognosia and gets interesting.

In the following analysis the **French Professor Bruno Dubois, Director of the Institute of Memory and Alzheimer's disease (IMMA) at La Pitié-Salpêtrière - Paris Hospitals**, addresses the subject in a rather reassuring way:

"If anyone is *aware* of their memory problems, they do NOT have Alzheimer's."

1 You know you forget names of families.

2 You know you don't remember where you put some things, but you remember you had them. This often happens in people 60 years and older and they complain they are losing/lacking their memory.

"All information remains in the brain, but the "processor" is lacking."

This is "Anosognosia" or temporary forgetfulness.

Half of people 60 and older have some symptoms due to age rather than disease.

Some of the most common cases are:

- **forgetting the name of a person,**
- **going to a room in the house and not remembering why we were going there,**
- **forgetting a movie title, actor or actress, and**
- **searching where we left our glasses or keys.**

After 60 years most people have some difficulty, which indicates that it is not a disease but rather a characteristic due to the passage of years. Many people are concerned about these oversights, hence the importance of the following statements:

1. "Those who are conscious of being forgetful have no serious problem of memory."

2. "Those who suffer from a memory illness or Alzheimer's are not aware of what is happening."

Professor Bruno Dubois, Director of IMMA reassures the majority of people concerned about their oversights: "The more we complain about memory loss the less likely we suffer from memory sickness."

This article was sent to me and I forwarded it to some of my friends. Many seemed to identify with it and were reassured and suggested I put it in the magazine. I hope you find it useful. Anne Grant

**RENHOLD CHAPEL July and August 2023
Sunday Services**

July

2nd July	10.30am	Mr G Hickee
9th July	10.30am	Mr A Dinnie
16th July	10.30am	Mr P Angell
23rd July	10.30am	Mr D McWilliam
Open Air Service on the green	3.00pm	Mr T Clarke

August

6th August	10.30am	Mr A May
13th August	10.30am	TBA
Open Air Service on the green	3.00pm	Mr T Clarke
20th August	10.30am	TBA
Afternoon Tea	4.00pm	
27th August	10.30am	Mr R Crane

Renhold Chapel Notes

You do not see many Zimmer frames, wheelchairs or hearing aids on Valentine's Day cards. They mostly seem to be full of young love, hearts and roses. Young love is wonderful and beautiful, full of optimism, and plans and hopes for the future. But love in later life is precious too. It is a love that has been forged through years of shared experiences and joy, maybe raising children together, perhaps enjoying grandchildren. It's a love that's stood the test of time, and deeper, much deeper, than any shop-bought Valentine's Day card can describe. That long-term love can also be shown by the devoted wife or husband who visits their spouse in a care home each day, gently talking with them when they are, perhaps, deep into dementia. Or sitting for long hours by a hospital bed. Or dutifully caring for them at home. Love is a marathon, not a sprint. It starts with white lace and promises and grows over the years. Mature love is about the commitment that spans decades and is seldom shown on the cards on sale in the High Street this Valentine's Day.

A priest, when he marries a couple and takes them through their wedding vows, hears them make their lifelong commitment "for better, for worse, for richer, for poorer, in sickness and in health, to love and to cherish, till death us do part." It is so wonderful to see the bride and groom smiling, and enjoying this precious moment, making vows that will, hopefully, span the rest of their lives. I love going to weddings – it is an immense privilege to be part of a couple's special day. Moreover, I find myself pondering what the future will hold for them. I wonder what shape that lifelong commitment will take, as I pray a blessing on their marriage. How much wealth or poverty will come their way? Will it be sickness or health that will accompany them through the years? How will they support each other as the years go by? 'Love is patient. Love is kind.' These are familiar words from the popular wedding reading in Paul's letter to the Corinthians. That patience that kindness are qualities that can develop over years of marriage. Just how much patience will be needed in the years ahead cannot usually be known on the wedding day.

So, this year, as I look at the rows of red or pink Valentine's Day cards on sale in the shops, I shall look out for cards that have a deeper message. I shall seek out cards that celebrate long-term love. Cards that say something about the joys and challenges of growing older together. Cards that go beyond hearts and roses to the deeper love that transcends love's first blossoming. I just hope I can find one because it is a big Anniversary this year.

RENHOLD PARISH COUNCIL 2023

Clerk to the Council: Mrs Lizzie Barnicoat

PO Box 1548, Bedford MK44 5AX

Tel: (01234) 771702 email: lizzie_barnicoat@hotmail.com

Councillor	Phone	e-mail
Susan Brunsden	266281	susan.brunsdn@ntlworld.com
Fiona Cardinale	07762 881009	Fionacardinale@gmail.com
Margaret Dean	771520	h.dean520@btinternet.com
Nicky Gribble	771994	nicky.gribble@icloud.com
Guido Liguori	01234 815150	parishmatters@blanchenef.com
Julian Polhill	07808 773577	julian.polhill@pageestate.com
Julie Roberts	07766 478974	joooles14b@btinternet.com
Martin Warwicker	07983 156845	m.warwicker@btinternet.com

Parish Council Meeting dates & venues for 2023

Parish Council meetings now start at 7pm.

The next meeting will be on Wednesday 26th July at Renhold Village Hall.

The subsequent meeting will be TBA.

Parish Council

As always, if you wish to raise any ideas or make comments to the Parish Council, then please contact one of the Parish Councillors (see above or the new Parish Council website (renhold-pc.co.uk) for contact details) or contact Lizzie, Parish Clerk on 771702 or email lizzie_barnicoat@hotmail.com

Borough Councillor Report Nicky Gribble

● The East West Rail route announcement was finally released at the end of May. The route chosen travels north out of Bedford station, over the Paula Radcliffe Way and onto the Clapham escarpment. From here, using a mixture of deep cuttings and high viaducts it continues over Graze Hill and continues North directly affecting our friends and neighbours in Ravensden, Wilden, Colsedon, Roxton and others along that line. The route that was proposed to run through Ravensden and Renhold is no longer being considered but the decision will have a significant impact on us and others during construction. (contd opposite)

We are working closely to understand all the implications for our residents and possible mitigation measures for the disruption which will be substantial, costly and long lasting.

- The hearing for the examination of the soundness of the Bedford Borough Local Plan 2040 started on Monday 12th and will carry on for two weeks for the first block of scrutiny.

- Lizzie Barnicoat and I are attending all sessions relevant to the proposed Science Park at Green End/ Water End either in person or virtually depending on the numbers attending each meeting. It is a formal process with representatives from Parish Councils, The Borough Council, Developers, members of the public and press. The submitted plan is examined by the Inspector who may question anyone who is registered to speak. We are only allowed to speak on matters contained within the plan which we submitted last year and the Inspector does not necessarily comment and may just make a note of the observation made. The Borough has acknowledged the high number of Renhold residents' comments on this proposal.

- **Bedford Borough Council responds to proposals to withdraw Day Travelcards**

Bedford Borough Council has responded to proposals from Transport for London (TfL) that could adversely affect many travellers from Bedford to London. TfL is proposing to withdraw Day Travelcards, which offer travel by tube, bus and rail within London. Travellers from Bedford who currently buy a Day Travelcard with their train ticket will instead have to use other options such as contactless payment, which will often cost more. The Council's response makes it clear that this proposal will have a negative impact on the residents of Bedford Borough and urges TfL to think again.

Councillor Jim Weir, Portfolio Holder for Environment, Highways, and Transport, said, "It is vital that we stand up for the residents of Bedford Borough and I hope that Transport for London takes the time to fully understand our response.

"I wish to thank the officers involved in putting together a clear and detailed response to this proposal from Bedford Borough Council."

If the proposal came into place TfL would no longer sell, issue, or accept all adult and child Day Travelcards covering zones 1-9, including Group Day Travelcards, Weekend Travelcards and discounted Day Travelcards bought using National Railcards.

The response from Bedford Borough Council calculates a range of different potential impacts, for various journeys and passengers. People who benefit from railcard discounts, but who cannot put their railcard on an Oyster card, will be hardest hit. Anyone who makes several journeys within London while they are there is also likely to end up paying more.

Commuters who use full season tickets are not affected, and people who do not travel far beyond their destination station within London may also be unaffected.

- A big thanks to everyone who supported me in my recent election and who continue to do so. I am still attending every Borough training session I can as well as supporting people in our community. Please do not hesitate to get in touch for information, advice or just a chat. I'll do my best to help or find someone who can.

Cllr. Nicola Gribble e mail Nicola.gribble@bedford.gov.uk tel. 07955530234





Qualified nail technician

Local technician in the Cranbourne Gardens estate

Look me up on Facebook:
@karonthenailfairy

To book text: 07745640150

Grow your nails with a gel overlay (biab)
by
The Gel Bottle

SWS

Window Cleaning

Using purified water technology safe working practices and fully insured.

www.sswwindowcleaning.co.uk

Steve White Services,
59, Church End, Renhold,
Bedford, MK41 0LX.

Tel: 01234 772327 (Ans m/c)

Mobile: 07731466553

E mail

stevewhite@sswindowcleaning.co.uk

PLEASE LEAVE NAME, ADDRESS
AND PHONE NUMBER



GEM

Driving Instruction
0786 166 4128



[We teach safe driving for life, not just for your Test](#)

DSA Approved Driving Instructor (Car)

IAM Registered Instructor

Grade 'A' Instructor

CRB Checked

Free Points of Reference guides included

Based locally, a calm, patient and friendly instructor specialising in nervous pupils

Contact Geoff on 0786 166 4128
or visit us at

www.gemdrivinginstruction.co.uk

[Please scan QR Code below for details](#)



*Bespoke floral creations for any occasion
designed and made for you by*

The Flower Angel

*Please call or text your Renhold-based florist
on 07519 721520*



RAVENS DEN Service Station

Est. 1983



Your Friendly Local
Service & Repair Centre

MOT Testing
Servicing & Repairs
Batteries & Exhausts
Tyres & Tracking
Air Conditioning
Diagnostics
Recovery/Bodywork (Arranged)
All Makes & Models



FREE Local Collection & Delivery

Telephone: 01234 771347

Bedford Road • Ravensden • MK44 2RA



Stunning, seasonal cut flowers grown in the walled garden at Howbury Hall in Renhold

- Regular doorstep deliveries for the home
- Bouquet deliveries
- Wedding and event flowers
- Sympathy tributes
- Wholesale flowers for local florists
- Garden visits and workshops when permitted

Beautiful flowers that don't cost the earth

howburyfarmflowers.co.uk

flowers@howburyfarmflowers.co.uk

Tel: 07870 517803 or 07786 038891

Henry's Garden Services

Your outdoors taken care of

Just "Leaf" it to me!

Garden

Home

Property Maintenance

Please call, text or email: 07715 972090

adam_hughes7@hotmail.com



Farm Shop & Butchery

www.franklinsfarmbutchers.co.uk

Free Range Poultry, Beef, Lamb & Pork

[This Photo](#) by

Serving fabulous Food, Coffee & Cake

Full English breakfast with Franklins sausages, bacon & eggs

Breakfast, Brunch, Light Lunches, Snacks, Hot & Cold Drinks

at Thorncote Green, Nr Sandy SG19 1PU, 01767 627644



BWS

Windows Ltd

Doors • Conservatories •
Bi-Folds • Aluminium Products

Unit 4F & 4G Aston Road, Cambridge Road Industrial Estate, Bedford, MK42 0LJ



We are manufacturers of Deceuninck products, Smart Bi-Fold doors and Stratus roof lanterns based in Bedford. We work directly with the trade and offer a supply and fit service for domestic projects across Bedfordshire and London.

BWS Windows are FENSA approved. GGF certified business that is also accredited by PWF.

For a free quote, ring the office and book an appointment.

Office: 01234 400500

hello@bwswindows.co.uk

R J GASCOYNE

THE PLUMBING, HEATING AND GAS COMPANY

Boiler changes, system upgrades, bathrooms, fault finding, servicing, maintenance, gas safety & landlord certificates, repairs, all heating, plumbing, drainage and gas work undertaken.

All from a friendly, reliable, trustworthy and professional engineer

Contact Ryan on

TEL: 07980 209587 or EMAIL: ryangascoynephg@gmail.com



RENHOLD VILLAGE DIRECTORY

All Saints Church

Parish Priest

Rev. Ian Smith
e: renhold.rev@gmail.com
772794

Churchwardens

Alan Bloomfield
351162
Keith Timms
772605

Lay Vice Chair

Alan Bloomfield
351162

Secretary to PCC

Ann Timms
772605
Jill Burrows
07710228995

Verger

Ann Timms
772605

Treasurer

Christine Smith
772794

Bell Tower Coordinator

Yvonne Potter
771495

Churchyard Volunteers

Teresa Trangmur
07788 402441

Renhold Chapel

Mr Albert Browning
772689

Brownie Pack

Mrs Kim Deller
267150

Renhold School

771724

Pudding Club for Carers

Anne Grant
771811

Creative Club

Teresa Trangmar
07788 402441

Chapel Coffee Morning

Albert Browning
722689

Preschool Group

Term time
Vicky Thompson
771724

Renhold Bridge Club

Rod Jones
771858

Magazine

Anne Grant
771811

Rod Jones

771858

Carpet Bowls Club

Chick
838651

Football Club

Mr K. Harlow
871178

Village Hall Bookings

07523 667232

Women's Institute

President

Jooles Roberts
07766 478974

Secretary

Jill Barrell
870461

Treasurer

Jan Tozer
297456

Renhold Stitches

Jackie Croot
870271

Reading Group

Pauline Capell
771858

Table Tennis

Rod Jones
771858

Luncheon Club

Yvonne Potter
771495

Borough Council

267422

Borough Councillors

Tim Caswell
07949 213464

Mrs Phillippa Martin-
Moran-Bryant
07934 853 907

Christine McHugh
07968 027560

Nicola Gribble
07955 530234

Renhold Village Agent

Teresa Moon
0800 0391234

Parish Councillors

See page 26

NHS Direct (non-

emergency
medical helpline): 111

Bedford Hospital

355122

Police: 999, 101 or
841212

Sgt. Carl Perri
PC Vito Napoli
PCSO Stephen Tarabella

North East Beds MP

Richard Fuller
01767 313385



Muskett Flooring

Carpets, Wood, Laminate, Vinyl & LVT Ltd

w: www.muskettflooring.co.uk

e: muskettflooring@yahoo.com

mob: 07788 952720

tel: 01767 641008

Unit 20, High Barns Farm,

Roxton, Beds, MK44 3ET

Domestic & Commercial Installations

Your local carpet fitter

The Polhill Arms, Renhold

A traditional village pub serving a great selection of real ales, wines, spirits & more

Food available Thursday - Sunday Family & dog friendly Seasonal events

A warm welcome awaits

25 Wilden Road, Renhold, Bedford, MK41 0JP 01234 771398

OPEN AS USUAL DURING THE ANGLIAN WATER ROAD WORKS SCHEME

For pub news follow us on facebook

Odell & Son Plumbing and Heating

Local family run business, same day service, no job too small, O.A.P. rates

Gas leaks, boiler breakdowns, installations & servicing.

Power flushing, cookers & fires fitted & fixed, bathroom installations, toilets, ball valves, water mains, burst pipes, showers, new radiators & outside taps.

**Special Offer:
Fixed price
Boiler Service only £60**

**Gas safe
registered**

**37, Ridge Rd.
Kempston MK43 9BS
Tel: 01234 855007
Mobile: 07795 821595**

SJB DECORATING SERVICES

- DOMESTIC & COMMERCIAL
- INTERIOR & EXTERIOR
- WALLPAPERING SPECIALIST

20 Church End, Renhold
Bedford MK41 0LU
01234 772024
07900 257737
sjbdec@hotmail.co.uk

Ian Locke Electrical Contractor

Part P Approved



A member of the National Association
of Professional Inspectors and Testers



Domestic and Commercial Electrical Installations

- Partial or Full Rewires - Consumer Unit upgrades - Earthing -
- Inspection and Testing - Fault Finding - Repairs -
- Portable Appliance Testing -
- Extra Sockets & Lights - Sheds & Garages - Low Energy Lighting -

Frank Locke & Sons
Broadlands Farm
Wilden Rd, Renhold
Bedford, MK41 0JJ

office: 01234 771 314
mobile: 07885 457 889
email: FLS439@btinternet.com

BAYCROFT
Care Homes

Baycroft Kempston offers 24-hour residential, nursing and dementia care within elegant surroundings. At Baycroft, our care goes both ways. We focus on the resident but also on family members and their needs. Every home we build and every service we offer is designed to provide comfort, reassurance, and peace of mind to residents and the people who love them most.

Fletcher Road, Kempston,
Bedfordshire MK42 7FY

Please contact Charlotte Deans:
cdeans@baycroft.co.uk
07964115018

Here for your journey
baycroft.co.uk

PC Upgrade
Computer Repairs

Computer Repairs, Service & Upgrades
No problem too big or too small

Home and Business Systems

**Windows/Mac/Smartphones/Printers/
Networking**

**Wifi Setup/Virus removal/Data Re-
covery**

Bedford & surrounding villages
- Established 1999 in Keysoe
Call Richard or Sammy
0771 289 3771/01234 709411

tech@pcupgrade.org
www.pcupgrade.org
Facebook/pcupgrade



FROM JUST
£7.50
PER MONTH*

HELP YOUR LAWN TO THRIVE, NOT JUST SURVIVE

Over the last 35 years our love for lawns has continued to grow. We combine our passion and enthusiasm with innovative technology and dedicated customer service as we continue to revolutionise UK Lawn Care. Our ground-breaking Lawn Treatment Programmes keep your grass looking its best all year round, ensuring your lawn receives the love and attention it deserves.

Join our nation of Lawn Lovers

Email: bedford@greenthumb.co.uk
Call: 01234 709345
Visit: greenthumb.co.uk

GreenThumb
LAWN TREATMENT SERVICES 

PELL'S FARM SHOP & NURSERY

RENHOLD RD,
WILDEN, MK44 2PT
Open 7 days / wk

Visit our friendly family-run farm shop for a huge selection of:

- vegetables grown here on our farm
- potatoes & fresh fruit
- milk, bread & cakes
- cheeses, meat and pies

And, in our nursery, a massive range of:

- bedding plants, trees & shrubs
- perennials, composts
- coal, logs & bird food
- pots & garden essentials

... and all at extremely competitive prices!



BLOOMFIELD

WEALTH MANAGEMENT

Investment planning
Pension transfers & switches



Thomas Murphy **Wealth Manager**

M: 07747 621373

E: tom.murphy@bloomfieldwealth.co.uk

Bloomfield Wealth Management is a trading name of Chic Kending Limited.

Chic Kending Limited is authorised and regulated by the Financial Conduct Authority.

Registered in the UK at 183 Clifton Road, Shefford, Bedfordshire, SG17 5AH. Company number 07167235.

Compass 

Elevation

Check out our
fresh new look



 **compass**
MAKING ALL THE RIGHT MOVES



elevation
estate agents | est. 1992

HAVE BECOME

Compass 
Elevation

14-16 Bromham Road, Bedford MK40 2QA