

THE RENHOLD MAGAZINE

All Saints Church Renhold

Christmas Tree Festival

**Saturday 9th December 10.00am — 5.00pm
and
Sunday 10th December
1.00pm — 5.00pm**

**All Welcome!
Children's Treasure Hunt**

**£3.00 entrance fee
Under 12s free**

Refreshments Available



**Contact ; Alan Bloomfield 351162
or Keith Timms 772605**

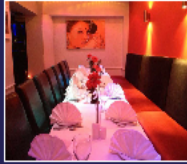
NOVEMBER 2023



Grand India

RESTAURANT & TAKEAWAY

EST 1980



We are the only Indian Restaurant in Bedford run by the same family for last 39 years.

39 TAVISTOCK STREET BEDFORD MK40 2RB

39 years and still counting.....

With more than 39 years of experience in the hospitality industry we the Grand Indian family run restaurant have a long and rich history with the dining industry to go along with our love and passion for food we offer a variety of authentic dishes freshly prepared daily by our experienced chefs. The restaurant offers an ambience second to none.



Free Home Delivery Available

OPENING HOURS
7 Days a week including all bank Holidays
5.30pm - 11.30pm

Order Take Away On Line
www.grandrestaurant.co.uk
or call
01234 359 566



SPECIAL OFFERS

Book A Table of 4 and get **£10** off your bill Book a table of 6 & get **£15** off your bill Book a table of 10 & get **£20** off your bill
*Must mention offer when making reservation



GOURMET NIGHT

(Every Wednesday's)
Dining in only 5 Course Meal, Any Start, Any Main Dish*, Any Side Dish, Rice or Nan & Coffee
Only **£10.99**
*Terms & Conditions apply



Contemplation



Bedfordshire Care Group

NAPA LIVING LIFE

Regulated by Care Quality Commission

carehome.co.uk



The Dementia Care Specialist - The People Who Care

Crossways Nursing Home

86 Hookhams Lane
Renhold
Bedford
MK41 0JX

01234 771694

www.contemplationhomes.co.uk

Nursing and Specialist Dementia Care

We have created a safe specialised environment for those living with dementia and nursing needs. Our staff are trained to a high standard using the latest evidence based person centred models for dementia specialist nursing. Activities, events and day to day living all contribute to a wonderful way of life within this fantastic setting.



DIARY NOVEMBER 2023

School dates 2023:

Autumn Term Mon.4th Sept.—Tues.19th Dec.

School Dates 2024:

Spring Term Wed.3rd Jan.—Thurs.28th March
Half-Term Mon.19th Feb.—Fri.23rd Feb.

++++
Notable Renhold dates & events:

Thurs.2nd Nov.	Wl. Talk from Canine Partners	Village Hall	7.30pm	p 17
Sat. 11th Nov.	Churchyard Group	Leaf Clearing	9.30am	
Mon.20th Nov.	Creative Club.	Xmas Card Making.	Chapter House	7.30pm
Thurs.30th Nov.	Parish Council meeting	Renhold Village Hall	7.00pm	p26
Mon.4th Dec.	Wreath making workshop	Chapter House	6.00pm	
Sat. 9th—Sun.10th Dec.	Xmas Tree festival	All Saints Church		

Church cleaning rota: Postponed till further notice.

++++
Please be aware that all items for inclusion in the magazine - articles, notices of events, reports on activities, etc, need to be with the editorial team by **the 12th of the month** at the latest.

++++
Editorial Team contact details:

Editors: Anne Grant, 4 Brookside, Renhold Tel: 771811
email: anne.grant9@btinternet.com
Rod Jones, 1 Church Close, Renhold Tel: 771858

Advertising: Judy Wootton, 24 Green End, Renhold Tel: 871168

Delivery: Ian Mclver Tel.07968 588057

Wild about Renhold: Tony Ploszajski, Tel: 771170

Roving Reporter: Pauline Capell, Tel: 771858

IT support: Ian Mclver, Tel: 07968 568057

Stapling Captain: Richard Deadman, Tel: 01234 341726

++++
PLEASE NOTE: All content copyright © 2023 Anne Grant. No unauthorised copying or reproduction. The editorial team is not responsible for any opinions, errors or omissions in articles, notices or advertisements submitted to and included in this magazine. Inclusion of advertisements does not imply endorsement of any product or service offered.

++++
THE RENHOLD MAGAZINE is published in accordance with its Privacy Policy, a copy of which may be obtained by application to the Editor (see 'Contact Details' above).

++++
Frontispiece: Poster for the Christmas Tree Festival sent in by Keith Timms

++++
This magazine is printed by JCB Printers. Tel 01234 871861. email: info@jcbprinting.co.uk

EDITORIAL By Anne Grant

This month I had the pleasure of seeing my nephew and his 9-year-old son who came all the way from New Zealand, for him to get to know his English cousins. We had a whirlwind celebration as the two of them stayed with each part of the family for a couple of days and we then managed a giant family gathering over a weekend. To get all the family together and see everyone enjoying each other's company just reinforced the importance of family in all our lives. I certainly could not have managed without the support of family and friends when Forbes had his stroke 31 years ago! The wonders of *group whats app* on all our phones, with the ability to send photos and share comments at the drop of a hat, meant we all felt included in everything and helped my sister in New Zealand to also feel involved. At times the world seems a very small place.

I recently rang a couple of friends to go for a walk round Priory Lake only to find a mass gathering there for the *Big Stride Out for Memory*, a fundraiser organised by the Tibbs Dementia organisation. We set off for our walk and were hugely entertained by wardens posted along the route clapping us in encouragement. We told them we weren't part of the walk, but they said it doesn't matter you are walking that's all that matters!! Tibbs Dementia is a brilliant organisation and do a great deal to help and support those with dementia and their carers.

We have another article by Albert Gurney in History Corner on p10. Albert has lived all his life in Renhold and has a fund of historical anecdotes and an incredible memory. Thank you Albert, keep them coming and the same goes for anyone else interested in the history of Renhold.



There is a super article from Teresa Moon, our village agent, on p24 offering all sorts of help or advice with smartphones, tablets or computers or help if you are having struggles with the diabolical increase in the cost of living.

Robert and Kathy at the local store will sadly be retiring soon, although it is hard to extract any definite dates from them. The latest update from Cathy and Robert is that the post office and store will remain open for a bit longer and when they do close they will close simultaneously. It will seem very strange without them there. I never seem to come out of the store without a smile on my face, perhaps because Robert is an excellent wind up merchant! He has been an integral part of our village, helping many people along the way. We wish them all the very best in the next phase of their life.

There is a lot to catch up on in the Parish Council Report including the latest concerns in the development of the Renhold Business Park, and a reminder of all the facets of Renhold life which the Parish Council are able to influence. However they need interested individuals to join the team. Nicky, our Borough Councillor, has included a very useful list of contact details which might be worth saving for future reference.

Finally as you can see from the front cover, the Christmas Tree festival in All Saints Renhold will be running again and anyone who would like to decorate a Xmas tree this year and display it at church will be very welcome. It is great fun to do and wonderful for all those who visit to admire all the entries. Any funds raised will of course go towards the upkeep of our lovely church.



Martyn Smith

Arboriculturist

MS Tree Care

All tree and hedge work undertaken

37, The Briars, Kempston

Bedfordshire MK42 7RB

Tel: 01234 851235 Mobile 07712 050068

Email: mstreecare@btinternet.com

Quality made to measure blinds

Verticals, Venetians, Romans, Rollers & Perfect Fit

Free measuring service, free fitting

Top brands at competitive prices

Let the showroom come to you

Join the empire of happy customers!

Call
us now
for a free,
no obligation
quotation!



**EMPEROR
BLINDS**
Quality made to measure blinds

01234 347110

www.emperorblinds.co.uk
enquiries@emperorblinds.co.uk



All Saints Church Services for November 2023

All services taken by Revd Ian Smith except where stated

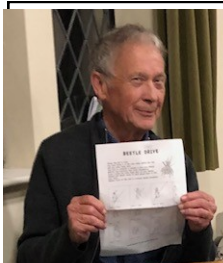
Wed. 1 November	11.30am	Prayers for the community

Sunday 5 November	11.00am	Parish Communion for All Saints
ALL SAINTS		
PATRONAL FESTIVAL	4.00pm	Choral Evensong for All Saints <i>Richard Deadman/Revd Ian Smith</i> <i>Visiting choir</i>
Wed. 8 November	7.30pm	Night Prayer

Sunday 12 November	8:30am	Said Communion
REMEMBRANCE SUNDAY	10.15am	War Memorial – Laying of wreaths
	10.50 am	Remembrance Service
	4.00pm	Remembrance Songs of Praise
Wed. 15 November	10.00am	Holy Communion BCP <i>Revd David Powell</i>

Sunday 19 November	11.00am	Parish Communion - (Safeguarding)
Wed. 22 November	7.30pm	Compline

Sunday 26 November	11.00am	Parish Communion
Wed. 29 November	7.30pm	Said Communion with Prayers for healing.
DAILY OFFICES – Revd Ian says the Daily Office in church at the following times. You are warmly invited to join him at this short service.		
EACH MONDAY	9.30am	Morning Prayer
EACH THURSDAY	4.00pm	Evening Prayer
FROM THE REGISTER		
Baptism	23rd September	Esme Niamh McLaughlin



Chris Swain, the winner of the Beetle Drive held in the Chapter House . As well as being good fun, it served as a fundraiser which raised £270 for church funds. Photo by Yvonne Potter

LETTER FROM THE VICAR

In the words of Victor Meldrew in *One Foot in the Grave* "I do not believe it!" As I write this month, we are rapidly approaching the end of the year – the final quarter is underway, and by the time you read this, the clocks will have gone back, and the winter could be upon us – where has 2023 gone to? This time of year is very busy in the church's calendar too, the month of November begins with our "Patronal Festival" our church birthday. This festival allows us to celebrate and give thanks for the great works of those who have gone before us in handing down such a wonderful building for us to worship in, and it is this time of year when we ask the Parish if they would be able to donate a small monetary gift to us to help us keep our ministry and mission moving forward. The churchwardens have written a letter in this edition explaining this further, and advising that it now costs over £120 per day to run the church, and this is without the restoration works that a 795-year-old building needs – Please if you can support us, we would greatly appreciate it.

From Patronal festival to another major event in the year when on 12th November we will be remembering those who have given their lives for their country and its people in the two world wars and conflicts since. We have a "Civic" service at the war memorial at 10:15 followed by a service in church at 10:45 which will include the National 2-minute silence at 11:00 and then a service of music, poetry, and readings at 4:00 pm when Renhold Remembers.

The third Sunday in November is also a special service at 11:00 when we mark Safeguarding Sunday – the safety of all people is important to us as a church and "safeguarding" is an important tool for making us alert to signs of abuse to anyone in our community, assessing risks so we can prevent instances from occurring, and then how to escalate should any concerns be raised. As you will have read in the National press recently, there has been a high-profile abuse case in our Diocese, painful lessons have been learned, enhanced policies and processes have been implemented swiftly as the safety of everyone using our churches is our top priority. Please keep all who have been affected by any form of abuse in your prayers.

Part of our ministerial responsibility is to help members of our community develop in their faith and become Christ's disciples in our world today. To enable this in our parish we are beginning a 6 x session course on Friday mornings from 3rd November where anyone who is interested can join us to establish where they may be on their faith journeys and explore where in our lives we find God and how we can make him more relevant in our lives and the world around us today. This is a light introduction to "study courses" and will be sensitively lead, and may well include cake and coffee too! For more details, please contact Rev. Ian (772794)

Finally, as the Christmas displays in the stores in Bedford begin to appear; The Friends of All Saints are planning a Christmas Tree Festival in Church across the weekend of 9th – 10th December. If you, your family, or your local organisation would like to create a tree and display it please contact Alan 351162 or Keith 772605 for more details! Please let your imaginations and creativity run wild. If last year is anything to go by, this event will be so much fun!

As always our planned schedule of services is listed within this edition and is as accurate as it can be at this time. We continue to use the All Saints Renhold Facebook page to Live-stream services at the usual times, with service sheets being available on our website www.all-saints-church-renhold.org for those who are unable to attend church in person. Please continue to take care and stay safe.

God Bless... Rev. Ian



RENHOLD PARISH CHURCH AT THE HEART OF OUR COMMUNITY FOR EIGHT CENTURIES

All Saints Day (Nov 1st) is our Patronal Day (our birthday) and on this day we remember with thanks the many generations who have given their time and money to keep this place running across the years.

Today, it costs on average £120 each day to fund our “running expenses”. This is in addition to the circa £86K that has been required for essential repairs to our church floor so we can pass this beautiful building on to future generations. We receive no Government support. Instead, we rely on the generosity of those who value this lovely medieval building and its role in village life.

In these current uncertain times, we appreciate that we must all be careful of our spending, but any donation you can make, be it large or small, would be much appreciated and wisely used. **Patronal Gift envelopes** are available in church, and in the porch - please indicate if you can Gift Aid and we can happily reclaim this.

Please bring your donations to either our services on **Sunday 29th October, or drop them into church which is open every day from 9:00am – 5:00pm.** You can also send your gift - c/o Revd. Ian Smith, The Vicarage, 46 Church End, Renhold MK41 0LU.

Or BACS payments can be made to Renhold Parochial Church Council sort Code 60-02-13 and account no. 51882973 ref: Patronal.



REMEMBRANCE SUNDAY - 12th November 2023

War Memorial at 10.15am - representatives of Renhold organisations will lay wreaths. Prayers and the Last post.

Service of Remembrance (Renhold Church) will begin promptly at **10.50am** and include the 2 minutes silence at 11am. The names of the Fallen will be read. This will *not* be a communion service.

Remembrance Displays by Village organisations can be viewed in the church during the afternoon.

‘Songs of Praise for Remembrance’ at 4pm Renhold Church – presenting the British legion standard. Favourite Remembrance hymns and music, interspersed with war poetry and readings.

Pebbles Beauty Room

Fully Qualified & insured
Beauty Therapist
Located in Wilden,
Bedfordshire
Home Based Beauty Room
By Appointment only basis

www.pebblesbeautyroom.co.uk
07496332609 / pebblesbeautyroom19@hotmail.com

State Registered Podiatrist Nicki Granby (BSc Hons) MCHS

Chiropodist / Podiatrist
HPC Registered



Home Visits
Individuals &
Nursing Homes

Flexible Appointments

t: 07773 652099

Records, Vinyl, CDs purchased



Have you any old vinyl records?

CDs/posters/music memorabilia?

Call Steve 07813
240560

TT Garden Services

General Maintenance
Tree, Hedge & Lawn Cutting/
Strimming
Patios & Fencing
Block Paving & Driveway's
Commercial & Domestic Work



For all your gardening needs, contact
Trevor
Bedford 771485
Mobile 07801102109



Antiques Purchased

Cash paid for unwanted items

Jewellery - Gold, Silver & Vintage
Watches • Militaria • Coins
Old Toys • Tamiya R/C • Trains
Nintendo • Enamel Signs

Call Paul 07549 086 313

History Corner Wot!! No White Vans Albert Gurney

Noticing the high number of vans delivering internet items through our village you may be asking how did households get any bulky items in days past? How were these delivered and who delivered them?

During the 1940s, 50s and into the 60s when villagers required any bulky items that could not be purchased in town, they ordered from adverts in newspapers. Household items were often advertised at the back of a Saturday paper as small-boxed adverts with a little drawing of the product. From memory, these included cotton bed sheets and wool blankets (usually direct from factories in the North), garden tools and one thing that amused me, a dustbin with a little chimney in the lid on three legs to be used as an incinerator.

Items were ordered by letter usually with a postal order to cover the cost, as households rarely had bank accounts, so it was cash or a trip to the post office to get your postal order. Renhold Post Office was an office on the side of the bungalow between Brook Farmhouse and Woodpeckers. This was managed by Doreen Duncombe, wife of Alfie, who worked at the post office in Bedford. This was also a meeting place, for Mums getting their family allowance, to catch up with village gossip.

The parcels were collected and delivered by British Rail Parcels and sent to the nearest railway station and then to the customer's address. Blunham was Renhold's nearest station. The area covered from this station was Blunham, Great Barford, Wilden, Colmworth, Ravensden and Renhold as far as I can remember.

In the 1940s British Rail used horses pulling a flat bed trailer. These were later replaced by a Scammell truck, a funny shaped three-wheel vehicle with only the single wheel at the front for steering. This was coupled up to a flat trailer similar to today's articulated lorries.

I am not sure when this all finished but I fear it was part of Dr Beecham's plan when the Bedford to Cambridge line was closed down. Blunham Station was sold and is now a house in a nice cul-de-sac that we pass through when using the cycle path from Priory Country Park to Sandy.



ALL SAINTS CHURCH, RENHOLD

Choral Evensong

Sunday 5th November at 4.00pm

Book of Common Prayer Evensong for All Saints

Organist- Paul Edwards, Choir - Cantamus & friends

Auction Sales & Valuations

Valuation, collection and auction service of individual items through to complete property and commercial clearances.

Call for a free no obligation quote or email info@peacockauction.co.uk

SALE ENTRIES NOW INVITED

Antique & Modern Furniture • Clocks • Books • Ceramics & Glassware • Pictures & Prints • Bicycles
Jewellery & Watches • Collectables • Garage Tools & Equipment • Household Electrical Items • Office
Furniture & Equipment • Retail Products & Stock • Vehicles • Horticultural & Commercial Equipment
Building Materials • Garden Furniture & Effects

www.peacockauction.co.uk



W&H PEACOCK
AUCTIONEERS & VALUERS

01234 266366



Eastcotts Park,
Wallis Way,
Bedford,
MK42 0PE

GEORGE GILLESPIE ROOFING CONTRACTOR

Council Approved

Lead Work

Chimneys

Insurance Work

New Work



Strip and Retile

Facia and Soffits

Repair Work

Slating

All Guaranteed

8 Thor Drive, Bedford, MK41 0WP
Tel. 01234 216608 Mob. 07961 986972

News from Bedford Borough

Two local playgrounds scheduled for refurbishment

Another ambitious refurbishment is being delivered to two popular local playgrounds, Priory Country Park and Commercial Road, also known as Sovereign's Quay, near to Star Rowing Club.

These new upgrades will provide improved places for children of all ages and abilities to play, aligning with the council's commitment to creating inclusive and engaging community environments.

The works are being delivered as part of the £1.5m Riverside for All project, which includes plans for additional planting, foot-path repairs, Longholme Lake improvements, new signage and refurbishment to infrastructure



along the riverside, incorporating investment from other projects at the same time.

Ten-year anniversary of The Higgins Bedford

In 2013 The Higgins Bedford opened its doors following an extensive refurbishment that united the Cecil Higgins Art Gallery and Bedford Museum.

The 'We Are Ten' exhibition currently running at The Higgins Bedford celebrates ten years since the major redevelopment of our local museum and art gallery. This free exhibition runs until Sunday 28 January 2024.

It showcases the favourite artworks of various community groups, organisations and individuals who have worked with The Higgins Bedford over the last decade. This includes a mix of both old favourites and rarely shown works, resulting in a vibrant display of paintings and prints for all to enjoy



Festival Success for The Bedfordshire Ramblers

The rebranded Festival was hosted by The Bedfordshire Ramblers groups and ran between the 9th and 17th September 2023.

The festival was a great success with the 4 Bedfordshire Ramblers Groups hosting 38 walks during the period and attracting over 525 walkers. Walks ran all over the county and comprised Wellbeing Walks of various lengths as well as short walks, long walks and interest walks. There was even a litter pick run in Dunstable which attracted 25 children. It is always lovely to encourage the youngsters to join in! One of the highlights of the festival was a day walking along the River Great Ouse followed by the John Bunyan boat, which after lunch carried us all home again up the Ouse.

Whilst we would always expect to have our own Ramblers join our walks, the Festival allows us to publicise our activities to a wider audience and we are delighted to announce that 40% of the walkers were new to us. As a Ramblers Group we are very proud of our beautiful little county and it is always a pleasure to introduce others to the hidden gems and beautiful countryside that we have discovered and explore regularly. Let's hope that we have inspired more people to get outside and explore the area.

We are already starting to plan the Bedfordshire Festival of Autumn Walks 2024, which will run from 7th – 15th Sept 2024. So put the dates in your diaries and come and join us.

With special thanks to all the walk leaders from Leighton Buzzard Ramblers, North Beds Ramblers, Lea & Icknield Ramblers and Ivel Valley Walkers – we couldn't have done it without you.

Photo courtesy of Pamela Bates (Leighton Buzzard Ramblers)

[North Beds Ramblers:](#)

Come and join us for a walk. We walk every Saturday afternoon approx. 6 miles

and Saturdays twice a month in morning for approx. 12 miles

November Walks

4th pm Keysoe, 4.5 miles

11th am Part V Bunyan Trail, Millbrook 10 approx, or pm Sandy 7 miles,

18th pm Harrold Country Park 6.5 miles

25th am Easton Maudit 11.5 miles or pm Maulden 6 miles

Contact; Margaret Sawyer 07780933729 Facebook; North Beds Ramblers

<https://www.ramblers.org.uk/north-bedfordshire>



Renhold Village Clubs 2023

Group	Contact	Tel.	Day	Time	Place
Bridge Club- No Fear	Rod Jones	771858	Every Mon. Every Fri.	9.45-1pm	St. Marks Church Brickhill
Brownies	Kim Dellar	267150	Every Thurs.	6.15- 7.45pm	RV Hall
Carpet Bowls	Chick	838651	Every Mon. Every Wed.	2-4.30pm 7-9.30pm	RV Hall
Chapel Coffee morning	Albert Brown- ing	772689	2nd Tues.	10-12noon	Chapel
Creative Club	Teresa Trangmar	07788402 441	3rd Mon.	7.30- 9.00pm	Chapter House
Luncheon Club	Yvonne Potter	771495	2nd Wed.	12.30 for 1pm	
Pudding Club for carers	Anne Grant	771811	1st Tues.	2-3.30pm	4, Brookside
Reading Group	Pauline Capell	771858	1st Fri.	4pm	1, Church Close
Renhold pre- school group	Vicky Thomp- son	771724		Term time	
Stitchers	Jackie Croot	870271	3rd Thurs.	10.30- 12.30pm	Chapter House
Table tennis	Rod Jones	771858	Every Mon. Every Wed. Every Fri.	1.30pm 10.30am 10.30am	Church Lane Com- munity Centre
WI.	Jan Tozer	297456	1st Thurs.	7.30pm	RV Hall
Yarn Craft Group	Marion Sutton	217647	Alternate Fridays	10am- 12.30pm	Wilden Village Hall

RV Hall = Renhold Village Hall; the Chapter House is at the back of All Saints Church.

Mobile Library Times November and December 2023

<u>Location of Mobile Library</u>	<u>Time</u>	<u>Nov.</u>	<u>Dec.</u>
Renhold - Green End	10:00 - 10:15	14, 28	12
Renhold - Home Close	10:40 - 10:55	14, 28	12
Renhold - Ravensden Road	11:00 - 11:15	14, 28	12

Times will vary slightly due to traffic conditions, etc. For further information about the mobile library service please contact Kempston Library tel. 01234 276453

YOU KNOW YOU ARE LIVING IN 2023 .IF.....

sent in by Rod Jones.

1. You accidentally enter your PIN on the microwave.
 2. You haven't played solitaire with real cards in years.
 3. You have a list of 15 phone numbers to reach your family of three.
 4. You email the person who works at the desk next to you.
 5. Your reason for not staying in touch with friends and family is that they don't have email addresses.
 6. You pull up in your own driveway and use your cell phone to see if anyone is home to help you carry in the groceries.
 7. Every commercial on television has a website at the bottom of the screen.
 8. Leaving the house without your cell phone, which you didn't even have the first 20 or 30 (or 80) years of your life, is now a cause for panic. And you turn around to go and get it!
 10. You get up in the morning and go on-line before getting your coffee.
 11. You start tilting your head sideways to smile. :)
 12. You're reading this and nodding and laughing.
 13. Even worse, you know exactly to whom you are going to forward this message.
 14. YOU are too busy to notice there was NO #9 on this list?!
 15. YOU actually scrolled back up to check that there wasn't a #9 on this list!
AND FINALLY NOW...You're LAUGHING at yourself!
- Blessed are they who can laugh at themselves, for they shall never cease to be amused!" (Unknown Author)

Some puzzles sent in by Jill Moubarak

1. I'm always running but never get tired. What am I?
2. What kind of cup doesn't hold water?
3. I am made to absorb, and I can hold liquid even though I am full of holes.
What am I?
4. What has legs but doesn't walk?
5. What's really easy to get into but hard to get out of?
6. I get answered even though I never ask a question. What am I?

Answers. On p27

In the spotlight Jill Burrows

At the last stapling session we were desperately short of helpers, and needed support. We met several people whom we had not seen before, and so I got to meet Jill. When I found out that she was Rev. Ian's sister, I couldn't resist, and am now delighted to introduce her to you. Jill lives in Primrose Fields, but was born in 1958 and grew up with her three younger siblings in Toddington. Her father worked in Dunstable, and her mother was a housewife. The church was an important part of growing up. Jill's father served as churchwarden and her mother was secretary to the PCC. Jill sang in the choir, helped at Sunday school, and was heavily involved in fundraising. At the end of her formal education Jill obtained a degree in medieval history before qualifying as a teacher. She taught in Dunstable, Leagrave and Luton, and I recognised many of her friends' names there, as my own ex-colleagues and acquaintances.

Jill married in 1995, again in Toddington. Donald, her husband, worked for General Motors, and travelled extensively as part of his role. It was his second marriage, and he has a son, Simon, who works as a paramedic in Hereford, and has two children of his own. Jill is very fond of her stepson, and is sad that they live so far away. In 2006, following Donald's retirement they moved to Hastings where Jill continued teaching at a local preparatory school. A year ago they relocated from Hastings to settle in Primrose Fields, and are very happy there. Her brother Ian was already vicar in the village and they had become members of All Saints Church while living in East Sussex through the live-streaming of services which began in lockdown and still continues. Jill and Donald had made many friends in the congregation when they visited from Hastings and are delighted to now call the village home. Jill is now secretary to the PCC and serves as a committee member for the Friends of the church.

Jill has many skills and interests. She enjoys reading, (I hope she will soon join the book club that runs here), and she loves classical music. She sings soprano performing in many musical genres over the years. Any spare time that she has, she will spend hours on a jigsaw puzzle; she is a fan of The Archers; she no longer plays tennis, but regularly watches it on TV, especially when Cam Norrie is on court!!! Renhold is a lovely village, with great countryside and a vibrant community. Jill, Donald and dachshund, Ollie, are now settled here although they have only just arrived.

While Jill was teaching history in Hastings, she took her class out on a visit to a well-known local attraction, The Wreck of the Amsterdam, a ship that was grounded and sank nearby in 1749. The name of a customs officer assigned to the wreck was William Coppard. One of her students was a member of the Coppard family so a research project was initiated. It turned out that one of William's daughters had married into the Polhill family, so in 2012, long before she came to live here, she visited the area to photograph the church, little realising that this would be her future home. Strange coincidence.



It was good to meet Jill. She seems to be a very resourceful lady, and keen to involve herself in our community.

She was easy to talk to, and as ex-teachers, we both seemed to share the same interests.

Now that the church is fully operational again, Jill looks forward to supporting her brother and sister-in-law with their ministry here. I enjoyed our meeting.

Rod Jones

Renhold WI

Our last meeting was everything we hoped it would be! Our speaker was certainly an expert on houseplants and a very entertaining character. Houseplants all over Renhold suddenly have a much longer life expectancy. I really must water that aspidistra . . .

At our next meeting on November 2nd we will be getting to know some Canine Partners, those wonderful assistance dogs. Come and meet Annie, a trainee, and Perry a fully trained dog who sadly cannot be partnered with a disabled person.

We meet at the Village Hall at 7.30 pm. Guests always welcome, admission £4.50. New members even more welcome, £23.00 for all meetings up to the end of March 2024.

See you soon, Jan Tozer, Treasurer.



Special Delivery for Renhold WI

LA Auto Services

quality and value automotive services

For all your motoring needs:

Car Servicing & Repairs
MoT Testing (incl. Class 7)
Tyres, Wheels & Exhausts
Bodywork Repairs
Winter & Summer checks, etc.
Free local collection & delivery
(by prior arrangement).

Established
1983

Up to 50%
cheaper
than
main dealer
prices!

3 - 5 Shuttleworth Court
Shuttleworth Rd
Bedford, MK41 0EN

Tel: (01234) 354237 / 351431
website: www.laautos.co.uk
email: service@laautos.co.uk



Select Travel Holidays

Home of Cruise Select

As an independent, family owned travel agency,
we're more than just travel agents; **we're travel specialists.**

Sometimes, nothing beats speaking to a human, especially a friendly professional!

01234 326778

www.selecttravelholidays.co.uk

sales@selecttravelholidays.co.uk

24 Mill Street, Bedford, MK40 3HD

BOOK LOCAL, TRAVEL THE WORLD.



BOOK WITH CONFIDENCE ABTA & ATOL protected





UKULELE BEDFORD

Ukulele Bedford is an open community-based ukulele group that meets every Wednesday evening 7:30-10:00pm at the King's Arms, St Mary's Street, Bedford.

Everyone is welcome and we have players and singers of all abilities. We play a variety of music across the decades right up to the latest hits, with tunes from The Kinks, David Bowie, Madness, Buddy Holly, John Denver, The Stray Cats, George Ezra, Status Quo, Tom Jones, and many more.

We just aim to have fun playing music of all styles. Come and join us for a sociable evening of ukulele playing and singing. We are a friendly bunch and it's free! All you need is enthusiasm. Visit our website to find out more

www.ukulelebedford.co.uk



WILD ABOUT RENHOLD (see opposite)



Photo of the river Ouse and Bedford Embankment sent in by Rev. Ian Smith

WILD ABOUT RENHOLD by Tony Ploszajski

1. Red Fox

Having suffered from substantial damage to the lawn in our back garden, I positioned a trail camera to try to identify the culprit(s). The resulting photographic evidence pointed to the likely perpetrators being Badgers, probably digging up Leatherjacket grubs from the grass, but the trail camera also revealed plenty of images of foxes, (one of which is reproduced here), which are also partial to the protein-rich Cranefly larvae. Foxes have a varied diet and whilst they are primarily carnivorous, fruit can make up 100% of their diet in the autumn in some areas. Whilst the churned-up grass was a very obvious clue to their presence, it was fascinating to see via the trail camera images just how active otherwise unseen wild-life can be.

2. Magpie

The trail camera was also fully operational during daylight hours and captured this image of a Magpie. I tend to think of Magpies as black and white birds, but this photo illustrates that on closer inspection their black plumage contains a purplish-blue iridescent sheen to the wing feathers and a green gloss to the tail. Iridescence is caused when the microscopic feather structure of some birds acts as a prism, splitting the light into its component colours. Whatever the science behind it, it adds a splash of colour to an otherwise monochrome bird.

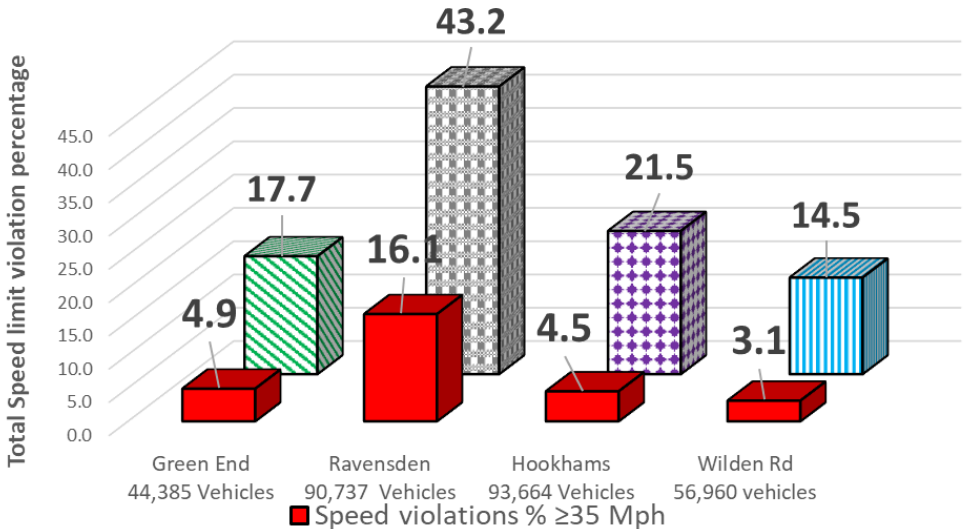
3. Grey Squirrel

By far the most frequent images captured by the trail camera were of a single hyperactive Grey Squirrel, in most cases bounding across the lawn with a mouthful of food that it was intent on burying in the grass. Squirrels cache surplus food in the autumn for retrieval when food is scarce. They typically 'scatter cache' which means they hide each food item separately (occasionally two or three small items), rather than putting them together in a single large 'larder'. This requires considerable brain power to remember where food has been hidden. Squirrels are also highly aware of their surroundings while caching their prize and will make fake caches (pretending to bury the nut or seed in one spot but surreptitiously carrying it elsewhere) if they think they're being watched by either a human or another squirrel. From a human perspective, however, it can be very frustrating when the inevitable proportion of nuts and seeds that remain unclaimed germinate and start to turn what is supposed to be an expanse of grassy lawn into nascent woodland!

BEDFORD EMBANKMENT

Bedford's Embankment was created by the Victorians as a tree-lined promenade with the river as its focus. As part of this, the river route was diverted to form the straight banks and islands you see today. The pedestrian suspension bridge linking the Mill Meadows island, located towards the bottom of the embankment, was opened in 1888 and shortly after a bandstand was located on the island. The newest addition to the Embankment is the Bedford Butterfly Bridge located adjacent to the Longholme boating lake.

Speed Indicator Device data September 2023



THE PARISH COUNCIL UPDATE October 2023

BEDFORD BOROUGH COUNCIL LOCAL PLAN INSPECTION HEARINGS LATEST – TO INCLUDE PROPOSED RENHOLD BUSINESS PARK – UP-DATE



Although the public hearing sessions have now concluded the Inspector considering if Bedford Borough's Local Plan is sound, was mindful that ahead of the Block 2 hearings commencing on 11th September 2023, a number of documents were added to the Examination Documents relating to provision of highways infrastructure. The Inspector noted that these documents were added at reasonably short notice and that some of the content relates to matters that were also addressed during the Block 1 hearings, which is when the Renhold business park site was discussed. With this in mind, the Inspector has invited any further comments by way of written statements from all those who submitted a response previously. As Central Bedfordshire Council and National Highways presented some significant issues and concerns relating to highways which was a point that Renhold Parish Council was equally very concerned about, the Parish Council will be submitting comments ahead of the 23rd October deadline.

PARISH COUNCIL MEMBERSHIP – WHY NOT COME AND JOIN US?

Please come and help shape your village. Are you interested in the life of Renhold, your local environment, recreational facilities, local transport, planning and housing issues? - just a few of the areas where you can get involved to help make a difference to our community. We currently have vacancies so if you would like more details please get in touch with Lizzie (details below) or any current Parish Councillor.

VEGETATION ALONG THE FOOTWAYS

As is usual at this time of the year with the unpredictable weather, everything has been busily growing and with this comes, unfortunately, the issue of vegetation obstructing some of the footways in the village. Please have a quick check that any hedges, trees or grass of yours kindly do not encroach on the footway as this can often make it difficult and challenging for those with pushchairs and mobility aids to pass.

KEEPING UP TO DATE WITH VILLAGE MATTERS

Do have a look at the Parish Council website which has a wealth of documents and useful local information on not only Parish Council matters but also a lot of other local items. The Parish Council regularly updates the site so it is worth visiting to check on what is happening: <https://renhold-pc.gov.uk>

If you are not already on the village circulation list then do please contact the Clerk, Lizzie, to be added so you can be kept up to date with the latest items.

WHAT IS THE PARISH COUNCIL UP TO?

As always there is a lot going on with the Parish Council working on a range of things recently, these include:

Cllr Roberts attending the Police Crime Commissioner Annual Parish Council meeting raising specific questions about highways safety in Renhold

Borough Councillor Jim Weir – Deputy Mayor & Portfolio Holder for Environment, Highways & Transport in attendance at October Parish Council meeting to hear from residents and Parish Councillors

Councillors meeting with Inspector Cunningham, Sergeant Perri, PC Napoli to discuss speeding vehicles and highways safety in Renhold, following the Police asking for the arranged August meeting to be postponed. This is now scheduled for 26th October

Cllr Gribble had a walk round with Andrew Prigmore, Highways Asset Manager, Bedford Borough Council to look at local highways issues

Orbit walk round meeting scheduled for November

Clerk attended meeting with Laura Church, Bedford Borough Council Chief Executive, to share challenges facing rural parishes

Financial support to Renhold Remembers and the marking of remembrance

Village assets improvement work, including noticeboard review and work on securing funding for additional defibrillators

Village grass cutting and maintenance work consideration and implementation of improvements

LAUNCH OF FUNDING SUPPORT FOR LOCAL COMMUNITIES

Bedford Borough Council has launched a rural grant programme that is open for applications from both businesses and community groups located in an eligible rural area to help improve productivity, connectivity and boost prosperity.

The rural capital grant programme is open currently for applications. The maximum request of £20,000. Funding for these schemes has been made available from Department of Levelling Up, Housing and Communities (DLUHC) and the Department of Environment, Food and Rural Affairs (DEFRA) through UK Shared Prosperity Fund (UKSPF) and the Rural England Prosperity Fund (REPF).

For more information about the UKSPF programme in Bedford Borough, visit <https://www.bedford.gov.uk/business/invest-bedford/rural-england-prosperity-fund>

The grant will support activities that specifically address challenges rural areas face. It can include support around the development of the visitor economy, active travel enhancements, and diversification of farm businesses outside of agriculture to encourage start-up, expansion or scale-up of these businesses where this involves converting farm buildings into other commercial or business uses.

CONTACTING THE PARISH COUNCIL

Remember you can make contact with Lizzie, the Clerk, or any Councillor on any village matter. Please contact Lizzie, the Clerk, directly on 771702 or at lizzie_barnicoat@hotmail.com

From Our Village Agent

Our Village Agent, Teresa Moon, is here to help people in Bedford Borough villages to access the services and support they might need. She can also help with money issues. Her services are confidential and free and she can visit you at home. Just call Freephone 0800 039 1234.



Are you nervous of using your smartphone, tablet or computer?

You Can Do IT!

If you would like to be more confident, free one-to-one teaching and support is available in Bromham every Wednesday afternoon. BRCC's team of **You Can Do IT!** volunteers are teaching people how to use their smartphones, tablets and computers to connect to the internet safely; use email; make video calls and complete online forms. These skills can help you to access online health services, attend online classes and group sessions; use the NHS app; and more. Just call me if you want to apply.

This initiative aims to improve people's health and wellbeing, reduce loneliness, decrease the burden on our local NHS, and increase people's ability to access online services and resources. (If you'd like to volunteer your services to teach others, we'd love to hear from you too.)

Are you struggling to get by on a low income? Could Social Tariffs save you money?

Cheaper phone and broadband

If you are receiving Universal Credit or Pension Credit, you could be saving money on your monthly mobile and broadband bills by switching to a Social Tariff. Current prices range from £10 to £20. Although it is a basic package, broadband speeds are mostly over 30 Mbit/s, so are fast enough for most needs. Prices are fixed and set up costs are next-to-nothing. Most providers offer a Social Tariff – check on www.ofcom.org.uk or ask me for help.

Help to reduce your water bill

Every water company has a social tariff scheme which can help reduce your bills if you're on a low income. Who is eligible, and the level of support, varies so check with your water company to find out what help might be available to you.

Do you know how to recycle your household batteries?

Bedford Council makes it very easy for us. All you have to do is put your used batteries in a small, clear plastic bag and seal it when full. Then place the sealed bag on top of your black or orange lidded bin or sacks on your normal day of collection. Recycling batteries helps prevent soil contamination as well as recovering valuable metals.

Do you have a problem with incontinence?

Did you know that some types of Incontinence pads are available free via the NHS and can be delivered to your home? Just ask your GP for a referral to the Continence Service. For more information contact the Bedfordshire Continence Service 0345 602 4064. For useful information on conditions and treatment options, contact The Bladder and Bowel Foundation 01536 533 255 www.bladderandbowelfoundation.org

Do You Need Help? I can visit you at home if you need help applying for a Blue Badge, Bus Pass, Attendance Allowance etc. I am happy to answer other queries or worries you might have - just call me.

Contact your Village Agent on Freephone 0800 039 1234

(This is an answerphone service, so please be ready to leave your name, address & telephone number, and I will aim to call you back within 48 hours.)

Borough Council October Update

Update from Bedford Borough on Paula Radcliffe Way works

We have now carried out testing and inspection of the crash barrier system and it has become apparent that the entire system needs to be replaced. This will improve road safety for all users, however, it will mean some works will need to be continued after the end of October.

This is an unforeseen delay and these additional works are planned to be completed by 15 December 2023 at the latest, and we hope will be finished before this date. The road will remain open during this time, in single lanes, allowing both Northbound and Southbound traffic to continue. We apologise for the inconvenience that this delay will cause to road users who rely on this route and thank all road users for their continuing patience while these necessary repairs are completed.

Some useful phone numbers and email addresses

Bedford Council General Enquiries: 01234 267 422 www.bedford.gov.uk

Adult Social Services: 01234 267 422 Care@bedford.gov.uk

Children's Services: 01234 267 422 childrensservices@bedford.gov.uk

Citizens Advice: 03444 111 444 www.citizensadvice.org.uk

Council Tax: 01234 718 061 www.bedford.gov.uk

Environment Hotline: 01234 718 060 customerservices@bedford.gov.uk

Highways Helpline: 01234 718 003 <https://highwaysreporting.bedford.gov.uk>

Street Light faults & Potholes: 01234 718 003 <https://highwaysreporting.bedford.gov.uk>

Libraries: 01234 267 422 www.virtuallibrary.culturalservices.net

Licensing: 01234 267 422 licensing@bedford.gov.uk

Planning: 01234 718 098 planning@bedford.gov.uk

Rights of Way: (footpaths, bridleways etc) 01234 267 422 row@bedford.gov.uk

Street Cleansing: 01234 267 422 www.bedford.gov.uk/transport_and_streets

Transport Enquiries: 01234 267 422 www.bedford.gov.uk/transport_and_streets

Waste Collection 01234 267422 www.bedford.gov.uk

Bedfordshire Police- non emergency: 101 www.bedfordshirepolice.uk

Bedford Hospital: 01234 355 122 www.bedfordhospital.nhs.uk

Cllr. Nicola Gribble email Nicola.gribble@bedford.gov.uk tel. 07955530234

Cllr. Nicola Gribble, Ward Councillor for Renhold and Ravensden

RENHOLD PARISH COUNCIL 2023

Clerk to the Council: Mrs Lizzie Barnicoat

PO Box 1548, Bedford MK44 5AX

Tel: (01234) 771702 email: lizzie_barnicoat@hotmail.com

Councillor	Phone	e-mail
Susan Brunsden	266281	susan.brunsdentntlworld.com
Fiona Cardinale	07762 881009	Fionacardinale@gmail.com
Margaret Dean	771520	h.dean520@btinternet.com
Nicky Gribble	771994	Nicola.gribble@bedford.gov.uk
Julie Roberts	07766 478974	joooles14b@btinternet.com
Martin Warwicker	07983 156845	m.warwicker@btinternet.com

Parish Council Meeting dates & venues for 2023

Parish Council meetings now start at 7pm.

The next meeting will be Thurs.30th November. 7pm Renhold village Hall.

Parish Council

As always, if you wish to raise any ideas or make comments to the Parish Council, then please contact one of the Parish Councillors (see above or the new Parish Council website (renhold-pc.co.uk) for contact details) or contact Lizzie, Parish Clerk on 771702 or email lizzie_barnicoat@hotmail.com

Happiness From Jill Moubarak

A teacher gave a balloon to every student, who had to inflate it, write their name on it and throw it in the hallway. The teacher then mixed all the balloons. The students were then given 5 minutes to find their own balloon. Despite a hectic search, no one found their balloon.

At that point, the teacher told the students to take the first balloon that they found and hand it to the person whose name was written on it. Within 5 minutes, everyone had their own balloon.

The teacher said to the students: "These balloons are like happiness. We will never find it if everyone is looking for their own. But if we care about other people's happiness, we'll find ours too."

May your day be filled with happiness too.

One of the simplest
ways to stay happy is...



RENHOLD CHAPEL November 2023
Sunday Services

5th November	10.30am	Mr David Gibson
12th November	10.30am	Mr Geoff Hicks
19th November	10.30am	Mr Steve Guest
26th November	10.30am	Mr D Button

Chapel Notes

Here we are once more into October. What weather we are having at the moment! Forecast this weekend is for very warm, 25 degrees! Such a mixture of weather this summer time. Not just here, but around the world. Each day it is reported that there has been some disaster or other. Mankind must wake up to the fact that global warming is real! We are blessed that our dear Lord Jesus still allows us to go on as we are, and is holding off the day of His return in order for more souls to be saved! I would not be surprised if we are in for a very cold winter with all the extremes we are experiencing.

Back to the here and now. September this year has marked the 150th year of Renhold Chapel, for which we give grateful thanks. We had some lovely celebrations, starting with an afternoon of lovely cakes and tea, and a viewing of many years of archives. Many people came, and it was good to see a number of our regular preachers attending, and also to catch up with friends and family. This was then followed by a Thanksgiving Service on Sunday morning, and it was so lovely to see the Chapel full. Our service was led by Steve Guest, who reminded us all of what our dear Lord Jesus came to this earth to do for us. This weekend was then followed by our Harvest Supper, and our Harvest Thanksgiving. Each very much enjoyed, and as always Carolyn organized a really lovely supper. Thanks to her and also to all her helpers. We now look forward to the Christmas celebrations, which aren't far off! As always everyone is welcome to join us.

God bless you all, stay safe, and keep trusting.

Answers to puzzles on p15

Answers.

1. Fridge 2. Hiccup 3. Sponge 4. Table 5. Trouble 6. Doorbell



Qualified nail technician

Local technician in the Cranbourne Gardens estate

Look me up on Facebook:
@karonthenailfairy

To book text: 07745640150

Grow your nails with a gel overlay (biab)
by
The Gel Bottle

SWS

Window Cleaning

Using purified water technology safe working practices and fully insured.

www.sswwindowcleaning.co.uk

Steve White Services,
59, Church End, Renhold,
Bedford, MK41 0LX.

Tel: 01234 772327 (Ans m/c)

Mobile: 07731466553

E mail

stevewhite@sswindowcleaning.co.uk

PLEASE LEAVE NAME, ADDRESS
AND PHONE NUMBER



G E M
Driving Instruction
0786 166 4128

[We teach safe driving for life, not just for your Test](#)

DSA Approved Driving Instructor (Car)

IAM Registered Instructor

Grade 'A' Instructor

CRB Checked

Free Points of Reference guides included

Based locally, a calm, patient and friendly instructor specialising in nervous pupils

Contact Geoff on 0786 166 4128
or visit us at

www.gemdrivinginstruction.co.uk

[Please scan QR Code below for details](#)



*Bespoke floral creations for any occasion
designed and made for you by*

The Flower Angel

*Please call or text your Renhold-based florist
on 07519 721520*



RAVENS DEN Service Station

Est. 1983



Your Friendly Local
Service & Repair Centre

MOT Testing
Servicing & Repairs
Batteries & Exhausts
Tyres & Tracking
Air Conditioning
Diagnostics
Recovery/Bodywork (Arranged)
All Makes & Models



FREE Local Collection & Delivery

Telephone: 01234 771347

Bedford Road • Ravensden • MK44 2RA



Stunning, seasonal cut flowers grown in the walled garden at Howbury Hall in Renhold

- Regular doorstep deliveries for the home
- Bouquet deliveries
- Wedding and event flowers
- Sympathy tributes
- Wholesale flowers for local florists
- Garden visits and workshops when permitted

Beautiful flowers that don't cost the earth

howburyfarmflowers.co.uk

flowers@howburyfarmflowers.co.uk

Tel: 07870 517803 or 07786 038891

Henry's Garden Services

Your outdoors taken care of

Just "Leaf" it to me!

Garden

Home

Property Maintenance

Please call, text or email: 07715 972090
adam_hughes7@hotmail.com



Farm Shop & Butchery

www.franklinsfarmbutchers.co.uk

Free Range Poultry, Beef, Lamb & Pork

[This Photo](#) by

Serving fabulous Food, Coffee & Cake

Full English breakfast with Franklins sausages, bacon & eggs

Breakfast, Brunch, Light Lunches, Snacks, Hot & Cold Drinks

at Thorncote Green, Nr Sandy SG19 1PU, 01767 627644



Unit 4F & 4G Aston Road, Cambridge Road Industrial Estate, Bedford, MK42 0LJ



We are manufacturers of Deceuninck products, Smart Bi-Fold doors and Stratus roof lanterns based in Bedford. We work directly with the trade and offer a supply and fit service for domestic projects across Bedfordshire and London.

BWS Windows are FENSA approved. GGF certified business that is also accredited by PWF.

For a free quote, ring the office and book an appointment.

Office: 01234 400500

hello@bwswindows.co.uk

R J GASCOYNE

THE PLUMBING, HEATING AND GAS COMPANY

Boiler changes, system upgrades, bathrooms, fault finding, servicing, maintenance, gas safety & landlord certificates, repairs, all heating, plumbing, drainage and gas work undertaken.

All from a friendly, reliable, trustworthy and professional engineer

Contact Ryan on

TEL: 07980 209587 or EMAIL: ryangascoynephg@gmail.com



RENHOLD VILLAGE DIRECTORY

All Saints Church

Parish Priest

Rev. Ian Smith
e: renhold.rev@gmail.com
772794

Churchwardens

Alan Bloomfield
351162
Keith Timms
772605

Lay Vice Chair

Alan Bloomfield
351162

Secretary to PCC

Ann Timms
772605
Jill Burrows
07710228995

Verger

Ann Timms
772605

Treasurer

Christine Smith
772794

Bell Tower Coordinator

Yvonne Potter
771495

Churchyard Volunteers

Teresa Trangmar
07788 402441

Renhold Chapel

Mr Albert Browning
772689

Brownie Pack

Mrs Kim Deller
267150

Renhold School

771724

Pudding Club for Carers

Anne Grant
771811

Creative Club

Teresa Trangmar
07788 402441

Chapel Coffee Morning

Albert Browning
722689

Preschool Group

Term time
Vicky Thompson
771724

Renhold Bridge Club

Rod Jones
771858

Magazine

Anne Grant
771811

Rod Jones

771858

Carpet Bowls Club

Chick
838651

Football Club

Mr K. Harlow
871178

Village Hall Bookings

07523 667232

Women's Institute

President

Jooles Roberts
07766 478974

Secretary

Jill Barrell
870461

Treasurer

Jan Tozer
297456

Renhold Stitches

Jackie Croot
870271

Reading Group

Pauline Capell
771858

Table Tennis

Rod Jones
771858

Luncheon Club

Yvonne Potter
771495

Borough Council

267422

Borough Councillors

Nicola Gribble
07955 530234

Renhold Village Agent

Teresa Moon
0800 0391234

Parish Councillors

See page 26

Neighbourhood Plan

Amanda Quince
870704

NHS Direct (non-emergency

medical helpline): 111

Bedford Hospital

355122

Police: 999, 101 or
841212

Sgt. Carl Perri
PC Vito Napoli

PCSO Stephen Tarabella

North East Beds MP

Richard Fuller
01767 313385



Muskett Flooring

Carpets, Wood, Laminate, Vinyl & LVT Ltd

w: www.muskettflooring.co.uk

e: muskettflooring@yahoo.com

mob: 07788 952720

tel: 01767 641008

Unit 20, High Barns Farm,

Roxton, Beds, MK44 3ET

Domestic & Commercial Installations



Your local carpet fitter

The Polhill Arms, Renhold

A traditional village pub serving a great selection of real ales, wines, spirits & more

Food available Thursday - Sunday Family & dog friendly Seasonal events

A warm welcome awaits

25 Wilden Road, Renhold, Bedford, MK41 0JP 01234 771398

OPEN AS USUAL DURING THE ANGLIAN WATER ROAD WORKS SCHEME

For pub
news follow
us on
facebook

Odell & Son Plumbing and Heating

Local family run business, same day service, no job too small, O.A.P. rates

Gas leaks, boiler breakdowns, installations & servicing.

Power flushing, cookers & fires fitted & fixed, bathroom installations, toilets, ball valves, water mains, burst pipes, showers, new radiators & outside taps.

**Special Offer:
Fixed price
Boiler Service only £60**

**Gas safe
registered**

**37, Ridge Rd.
Kempston MK43 9BS
Tel: 01234 855007
Mobile: 07795 821595**

SJB DECORATING SERVICES

- DOMESTIC & COMMERCIAL
- INTERIOR & EXTERIOR
- WALLPAPERING SPECIALIST

20 Church End, Renhold
Bedford MK41 0LU
01234 772024
07900 257737
sjbdec@hotmail.co.uk

Ian Locke Electrical Contractor

Part P Approved



A member of the National Association
of Professional Inspectors and Testers



Domestic and Commercial Electrical Installations

- Partial or Full Rewires - Consumer Unit upgrades - Earthing -
- Inspection and Testing - Fault Finding - Repairs -
- Portable Appliance Testing -
- Extra Sockets & Lights - Sheds & Garages - Low Energy Lighting -

Frank Locke & Sons
Broadlands Farm
Wilden Rd, Renhold
Bedford, MK41 0JJ

office: 01234 771 314
mobile: 07885 457 889
email: FLS439@btinternet.com

BAYCROFT
Care Homes

Baycroft Kempston offers 24-hour residential, nursing and dementia care within elegant surroundings. At Baycroft, our care goes both ways. We focus on the resident but also on family members and their needs. Every home we build and every service we offer is designed to provide comfort, reassurance, and peace of mind to residents and the people who love them most.

Fletcher Road, Kempston,
Bedfordshire MK42 7FY

Please contact Charlotte Deans:
cdeans@baycroft.co.uk
07964115018

Here for your journey
baycroft.co.uk

PC Upgrade
Computer Repairs

Computer Repairs, Service & Upgrades
No problem too big or too small

Home and Business Systems

**Windows/Mac/Smartphones/Printers/
Networking**

**Wifi Setup/Virus removal/Data Re-
covery**

Bedford & surrounding villages
- Established 1999 in Keysoe
Call Richard or Sammy
0771 289 3771/01234 709411

tech@pcupgrade.org
www.pcupgrade.org
Facebook/pcupgrade



FROM JUST
£7.50
PER MONTH*

HELP YOUR LAWN TO THRIVE, NOT JUST SURVIVE

Over the last 35 years our love for lawns has continued to grow. We combine our passion and enthusiasm with innovative technology and dedicated customer service as we continue to revolutionise UK Lawn Care. Our ground-breaking Lawn Treatment Programmes keep your grass looking its best all year round, ensuring your lawn receives the love and attention it deserves.

Join our nation of Lawn Lovers

Email: bedford@greenthumb.co.uk
Call: 01234 709345
Visit: greenthumb.co.uk

GreenThumb
LAWN TREATMENT EXPERTS 

PELL'S FARM SHOP & NURSERY

RENHOLD RD,
WILDEN, MK44 2PT
Open 7 days / wk

Visit our friendly family-run farm shop for a huge selection of:

- vegetables grown here on our farm
- potatoes & fresh fruit
- milk, bread & cakes
- cheeses, meat and pies

And, in our nursery, a massive range of:

- bedding plants, trees & shrubs
- perennials, composts
- coal, logs & bird food
- pots & garden essentials

... and all at extremely competitive prices!



BLOOMFIELD

WEALTH MANAGEMENT

Investment planning

Pension transfers & switches



Thomas Murphy **Wealth Manager**

M: 07747 621373

E: tom.murphy@bloomfieldwealth.co.uk

Bloomfield Wealth Management is a trading name of Chic Kending Limited.

Chic Kending Limited is authorised and regulated by the Financial Conduct Authority.

Registered in the UK at 183 Clifton Road, Shefford, Bedfordshire, SG17 5AH. Company number 07167235.

Compass 

Elevation

Check out our
fresh new look



 **compass**
MAKING ALL THE RIGHT MOVES



elevation
estate agents | est. 1992

HAVE BECOME

Compass 
Elevation

14-16 Bromham Road, Bedford MK40 2QA