

THE RENHOLD MAGAZINE

ROBERT AND KATHY WE WILL MISS YOU



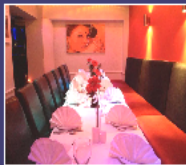
DECEMBER 2024 & JANUARY 2025



Grand India

RESTAURANT & TAKEAWAY

EST 1980



We are the only Indian Restaurant in Bedford run by the same family for last 39 years.

39 TAVISTOCK STREET BEDFORD MK40 2RB

39 years and still counting.....

With more than 39 years of experience in the hospitality industry we the Grand Indian family run restaurant have a long and rich history with the dining industry to go along with our love and passion for food we offer a variety of authentic dishes freshly prepared daily by our experienced chefs. The restaurant offers an ambience second to none.



Free Home Delivery Available

OPENING HOURS
7 Days a week including all bank Holidays
5.30pm - 11.30pm

Order Take Away On Line
www.grandrestaurant.co.uk
or call
01234 359 566



Please don't hesitate to ask us if you have any special requirements or allergies, etc. We are here to please you!



GOURMET NIGHTS
Wednesday Evenings
(Dining in only)
*** 5 courses ***
Any Starter, any Main, any Side, plus Rice or Naan and Coffee.
Only £14.99

* Terms & Conditions Apply



Contemplation



Bedfordshire Care Group

NAPA LIVING LIFE

Regulated by Care Quality Commission

Carehome.co.uk



The Dementia Care Specialist - The People Who Care

Crossways Nursing Home

86 Hookhams Lane
Renhold
Bedford
MK41 0JX

01234 771694

Nursing and Specialist Dementia Care

We have created a safe specialised environment for those living with dementia and nursing needs. Our staff are trained to a high standard using the latest evidence based person centred models for dementia specialist nursing. Activities, events and day to day living all contribute to a wonderful way of life within this fantastic setting.



DIARY DECEMBER 2024 & JANUARY 2025

School Dates 2024—2025:

Autumn Term	Wed.4th Sept. —Fri.20th Dec.
Half-Term	Mon.28th Oct. —Fri.1st Nov.
Spring Term	Tues.7th Jan. —Fri.4th April.
Half-Term	Mon.17th Feb. .—Fri.21st Feb.

+++++

Notable Renhold dates & events: (RVH = Renhold Village Hall)
(CH=Chapter House at All Saints Church)
(ASR=All Saints Renhold)

Sat.30th Nov.	EWR open meeting	12-to 5.00pm	Grand Hall	p22
Sat.7th Dec.	Neighbourhood Plan drop in	12 to 5.00pm	RVH	
Mon.9th Dec.	EWR Open Meeting	2 to 7.00pm	Swan Hotel	p22
Mon.9th Dec.	Christmas Wreath Workshop	6.30pm	CH	
Tues. 10th Dec.	Cantamus Choral concert	7.30pm	ASR	p19
Wed.11th Dec.	EWR Open meeting	2 to7pm	Wilden Village Hall	p22
Thurs.12th Dec.	Renhold Carol Service	2.00pm	RVH	
Fri. 20th Dec.	Xmas Tibbs memory workout	11to 12.30pm		p15
Mon.13th Jan.	Creative Club	7.30pm	CH	
Sat.18th Jan.	Churchyard Clearance	9.30am		
Sat.22nd Feb.	Blunham book sale	10am –3pm		p10

Church cleaning rota:

Mon.2nd Dec. Christine Smith and Jill Burrows

+++++

Please be aware that all items for inclusion in the magazine - articles, notices of events, reports on activities, etc, need to be with the editorial team by **the 12th of the month** at the latest.

+++++

Editorial Team contact details:

Editor:	Anne Grant, 4 Brookside, Renhold email: anne.grant9@btinternet.com	Tel: 771811
Advertising:	Judy Wootton, 24 Green End, Renhold	Tel: 871168
Delivery:	Ian McIver, and Barbara Libiszowski	Tel:07968 568057
Wild about Renhold:	Tony Ploszajski,	Tel: 771170
Roving Reporter:	Pauline Capell,	Tel: 771858
IT support:	Ian McIver,	Tel: 07968 568057
Treasurer:	Teresa Trangmar,	Tel:07788 402441

+++++

PLEASE NOTE: All content copyright © 2024 Anne Grant. No unauthorised copying or reproduction. The editorial team is not responsible for any opinions, errors or omissions in articles, notices or advertisements submitted to and included in this magazine. Inclusion of advertisements does not imply endorsement of any product or service offered.

+++++

THE RENHOLD MAGAZINE is published in accordance with its Privacy Policy, a copy of which may be obtained by application to the Editor (see 'Contact Details' above). It can also be seen on the Parish Council website.

Frontispiece: Photo sent from Robert
This magazine is printed by JCB Printers, Gt Barford.
Tel: 01234 871861. e-mail: info@jcbprinting.co.uk

EDITORIAL BY Anne Grant

Well, at last we have some information from **East West Rail**. Rachel Reeves, the Chancellor, has confirmed support for East West Rail and a 10 week non-statutory consultation will take place until 24th January. The exact choice of route is the thing that most preoccupies those in Renhold and neighbouring villages. All we can do is attend any of their local meetings and make our voices heard, to try and get them to consider the southern route around Bedford and sign the petition. For further detail see Peter Norris' article on p 22.

Our thoughts go to the residents of **Cleat Hill** who suffered a horrendous explosion in one of the houses on 19th October when two people tragically died. At the time of writing the road has been closed, as have many footpaths and walkways and 50 households have been evacuated. At times the residents have been permitted to return to collect their possessions, and the Borough Council have provided quiet working space in the council offices during this enforced evacuation. Other support offered was the creation of an Advice and Support Centre, temporary accommodation, financial support and a 24 hour emergency helpline. Meanwhile the Bedfordshire police, fire and rescue service and Health and safety executive are actively investigating the cause of the explosion.

After 32 years **Robert and Kathy** have said Goodbye to the shop and post office. They have given us a great service throughout, especially nurturing us through Covid and they will be missed by all of us. Somehow I always left the shop with a smile, usually because Robert had been winding me up yet again! I am sure he will miss all of us though he would never admit it!! There is a farewell article written by Rosemary Godwin, Kathy's sister on their behalf on p 16. (see pp16 &17 for the next stage).

Total Triage is the name given to the new way of accessing appointments at the de Parys surgery and should improve the ongoing nightmare of trying to get an appointment at 8am. The idea is to send an e mail on their website outlining your problem, then a team of GPs will triage them and make an appointment directing you to the right person. If you are not online then you just phone the surgery or call in in the usual way and your details will be dealt with as normal. The full details can be read on p 10. Hopefully this will make it easier both for us and the overworked GPs.

There are some more brain stretching tasks for us compiled by some of the pupils at **Renhold Primary School** on pp12 &13 It is lovely to receive original submissions from them and I hope they enjoy seeing their efforts in print. Hoping we will get some more from them in the New Year.

On **Remembrance Day** a large number of people gathered at the War Memorial for a very moving service led by Carolyn Smith from the Chapel, where 12 wreaths were laid representing several different groups in the Parish (p17). Some of the children from the school participated scattering poppies in front of the war memorial. The trumpet playing the last post by Julia Crask contributed to the solemn atmosphere. The service was then continued at church where all the windowsills were festooned with beautiful flower arrangements, each representing different organisations in Renhold. Many thanks to Amanda Quince for organising the various events.

As this is a 2 month edition, on behalf of all the Magazine Team, we wish you a very merry Christmas and a Happy New Year. and also a speedy return to good health for Revd Ian.



Martyn Smith

Arboriculturist

MS Tree Care

All tree and hedge work undertaken

37, The Briars, Kempston

Bedfordshire MK42 7RB

Tel: 01234 851235 Mobile 07712 050068

Email: mstreecare@btinternet.com

Quality made to measure blinds

Verticals, Venetians, Romans, Rollers & Perfect Fit

Free measuring service, free fitting

Top brands at competitive prices

Let the showroom come to you

Join the empire of happy customers!

Call
us now
for a free,
no obligation
quotation!



**EMPEROR
BLINDS**
Quality made to measure blinds

01234 347110

www.emperorblinds.co.uk
enquiries@emperorblinds.co.uk



All Saints Church Services for December 2024 & January 2025

Sunday 1 st Dec. Advent Sunday	11:00am	Parish Communion <i>Revd Jennie Cappleman</i>
Sunday 8 th Dec. Advent 2	11:00am 4:00 pm	Café Church Evensong (BCP) with hymns <i>Richard Deadman</i>
Sunday 15 th Dec. Advent 3	11:00am	Parish Communion <i>Revd Tricia Reed</i>
Wednesday 18 th Dec.	10:00am 3:30pm 7:00pm	Holy Communion (BCP) <i>Revd David Powell</i> Messy Church Nine Lessons & Carols <i>followed by mulled wine and mince pies</i>
Thursday 19 th Dec. Saturday 21 st Dec.	6:00pm 4:00pm	Handbells & Carols- Cranborne Gdn Family Carols & Candles
Sunday 22 nd Dec. Advent 4	11.00am 3.00pm	Parish Communion Blue Christmas
Tuesday 24 th Dec. Christmas Eve	4.00pm 11.00pm	Crib Service with Nativity Midnight Mass
Wed 25 th Dec. CHRISTMAS DAY	11:00am	Family Communion at Christmas
Sunday 29 th Dec. Christmas 1	11.00am	Parish Communion
Sunday 5 th Jan. Epiphany	11:00am	Parish Communion for Epiphany <i>Revd David Powell</i>
Sunday 12 th Jan. Epiphany 1	11:00am 4:00pm	Family Worship – Plough Sunday Evensong (BCP) with hymns <i>Richard Deadman</i>
Wednesday 15 th Jan.	10:00am 3:30pm	Holy Communion (BCP) <i>Revd David Powell</i> Messy Church
Sunday 19 th Jan. Epiphany 2	11:00am	Parish Communion <i>Revd Jennie Cappleman</i>
Sunday 26 th Jan. Epiphany 3	11:00am	BCP Mattins with hymns <i>Richard Deadman</i>

DAILY OFFICES - Due to Revd Ian's absence from the Parish the Daily Office will not be said in church until further notice. Orders of service for Morning Prayer, Evening Prayer and Night Prayer will be available on <https://www.achurchnearyou.com/church/7680/service-and-events/events-all/>

From the registers

Funeral	25th October	Joyce Allen
Baptism	17th November	Arthur Wynn
Wedding	15th December	Janet Clements and Kenneth Whitehead

Letter from the Vicar

We write this "letter from the Vicar" in place of Rev'd Ian, as many of you know Ian had surgery in October. We are pleased to let you know that as we write, Reverend Ian is making good steady progress and on course to resume some duties before Christmas. He thanks everyone for their continued prayers, cards and best wishes.

At the start of December we begin the "countdown" to Christmas in earnest, for many this involves a daily chocolate or some other treat from an Advent Calendar. In Church we mark this by lighting a new candle on the Advent Wreath for each of the four Sundays before Christmas. Yet however we choose to mark this countdown, we are all waiting and anticipating the same special event – a celebration of the day Christ Jesus was born. The word Christmas originates from the "Mass of Christ".

We mark Christmas with gifts. God gifted us his son to help heal a broken world with love and peace. Alongside the Advent treadmill of shopping, decorating, cooking and wrapping, we hope everyone will get chance to reflect on the true message of Christmas and experience the gifts we can all give for free - love, peace and kindness.

We have a host of different services and events throughout December (see opposite) and a warm welcome is always assured. This year we have four different Carol services, we start with a Renhold Community Carol Service on the 12th at the Village Hall, a traditional Lessons and Carols in Church on the 18th, Family Carols by Candlelight outside with a brass band on the 21st and we are singing Carols in Cranbourne Gardens on the 19th December. As always mulled wine, hot chocolate and mince pies seem to feature regularly! A reminder of the Family Crib Service at 4pm on Christmas Eve where every child can get involved, dress up and help tell the Christmas story. Christmas Communion Services are at 11pm on 24th and 11am on 25th December. For those who find Christmas difficult, we have a service entitled "Blue Christmas" on the 22nd, where we remember loved ones and find strength together. For those just looking for some peace and quiet away from the hustle and bustle, a reminder that the Church is open each day between 9am and 4pm for anyone to come in and sit peacefully, pray or light a candle. Further details of all services and events can also be found on our website www.achurchnearyou.com/church/7680

We look forward to welcoming you during this festive season and may God bless you with the peace, love, comfort and joy that the coming of Jesus offers our world.

Best wishes for Christmas and the New Year, Sarah and Alan

From Your Local Village Agent

Greetings from your Village Agent, Lydia Wright. I am here to help vulnerable people in Bedford Borough villages to access the services and support they might need. These services are free (funded by Bedford Borough Council) and I can visit you at home. Call me free on the number below.

Attendance Allowance

Do you need extra funds due to poor health, and get confused with the paperwork? Give me a call and I will guide you through the process and help fill in the forms for Attendance Allowance.

Do You Need Help with Transport?

Bus Pass Applications

Do you need help to apply for or renew a bus pass? I'm happy to assist.

Do You Struggle with Mobility?

You might be eligible for a Blue Badge - I can help you to fill in the application form.

Do You Need Access to Disabled Toilets?



Some disabled toilets can only be used by people who have a special RADAR key. If this would be helpful to you, I can provide one.



Are You Eligible for Pension Credit?

The minimum income for people over State Pension age should be above £221.20 per week if you live alone, or more as a couple. Ask me for a confidential review of your finances if you think your income might fall below this amount. Your eligibility for the Winter Fuel Allowance is tied to Pension Credit.

Contact your Village Agent on Freephone 0800 039 1234

(This is an answerphone service, so please be ready to leave your name, address & telephone number, & we will aim to call you back within 48 hours.)

All Saints' Church, [Renhold](#)



Nativity Crib Service

Christmas Eve, 4.00 pm

Join us for this family service as together we tell the Christmas story. Every child will be invited to dress up and take part in the nativity.

Some Christmas jokes.

1. How much did Santa pay for his sleigh?
Nothing – it was on the house.
2. What do donkeys send out near Christmas?
Mule-tide greetings.
3. What did the snowman say to the aggressive carrot?
"Get out of my face."
4. A gingerbread man went to the doctor's complaining of a sore knee.
"A sore knee?" the doctor said.
"Have you tried icing it?" A.G.

Pebbles Beauty Room

Fully Qualified & insured
Beauty Therapist
Located in Wilden,
Bedfordshire
Home Based Beauty Room
By Appointment only basis

www.pebblesbeautyroom.co.uk
07496332609 / pebblesbeautyroom19@hotmail.com

State Registered Podiatrist Nicki Granby (BSc Hons) MCHS

Chiroprapist / Podiatrist
HPC Registered



Home Visits
Individuals &
Nursing Homes
Flexible Appointments

t: 07773 652099

Records, Vinyl, CDs purchased



Have you any old vinyl records?

CDs/posters/music memorabilia?

Call Steve 07813
240560

TT Garden Services



General Maintenance
Tree, Hedge & Lawn Cutting/
Strimming
Patios & Fencing
Block Paving & Driveway's
Commercial & Domestic Work

For all your gardening needs, contact
Trevor
Bedford 771485
Mobile 07801102109

CASH Paid for UNWANTED Items

Jewellery
Watches
Coins
Medals
Old Toys
Lamps
Cameras

Clocks
Nintendo
Signs
Walkmans
Ephemera
Robots
Militaria

FULL / PART HOUSE OR
GARAGE CLEARANCE
SERVICE AVAILABLE

Friendly Service

07549
086313

Please leave a message
if I miss your call

Total Triage at the de Parys Practice

The De Parys Group moves into using the Total Triage model in order to better meet demand of patients. The De Parys Group have chosen SystmConnect as the online consultation provider and it is accessible via their website www.thedeparysgroup.co.uk.

Currently, The De Parys Group operates at 1 full time equivalent GP per 1700 patients, this is higher than the national and Bedford/Luton/Milton Keynes average, offering almost 2200 GP appointments each week – this is more than 20% capacity over and above the British Medical Association recommendation. 25% of our GP appointments are avoidable.

The De Parys Group want to avoid the 8am rush and found, when using the more traditional system of phoning in or waiting at the door in the queue, appointments were offered when the patient got through to the surgery and not based on their need. The De Parys Group cannot increase appointment capacity, but how appointments are managed can be improved.

SystmConnect will be open every working day from 7.00am to 3:30pm. This will allow patients to make initial contact with us at a time which is convenient for them without requiring to call us. SystmConnect will be closed between 3.30pm and 6.30pm on working days to allow our clinicians time to ensure that all patient contacts have been reviewed before the practice closes for the day. If an online consultation is submitted before 3.30pm on a normal working day, it will be reviewed by a clinician the same working day. If the clinician triages the appointment need for the same day, patients will be contacted and offered a same day appointment. However, if the clinician triages the appointment need as less urgent than the same day, the patient may be contacted the next working day.

The phone line will still be open between 3.30pm and 6.30pm for any urgent queries. This is not a way to restrict how patients contact the surgery, and it is not a way to limit how many patient contacts are made. **Patients can still come into reception and can still phone, an online consultation will still be completed.** Appointments will be offered depending on clinically triaged need, ie same day, next working day. This should reduce waiting times for patients, improve access to appointments and ensure priority is based on clinical need. Requests will be dealt with efficiently and continuity of care will be improved.

There will always be an exception, as every patient is different, and it is impossible to plan for every situation. Palliative Patients, Care Home Patients, Safeguarded Adults, Mental Health Crisis, Emergencies in the Waiting room, Home Visits, Homeless and Complex patients will be treated as exceptions to total triage. **In a nutshell, using the total triage model patients will provide information about their reason for contact, this will then be reviewed by a clinician, and then either an appointment or signposting will be offered, based upon this clinical review. Justine Nathan**

THE BIG BLUNHAM BOOK SALE IN 2025

Will be held on Saturday 22nd February 2025 10.00 am to 3.00 pm in Blunham Parish Church MK44 3NQ. There will be an enormous selection of nearly new books - specialist and fiction sorted into categories. Homemade soup with bread, homemade cakes, hot dogs, teas and coffees served all day. For further details please ring Sue and Peter Holden 01767 640572. All profits to Blunham Church Fabric Fund.

Auction Sales & Valuations

Valuation, collection and auction service of individual items through to complete property and commercial clearances.

Call for a free no obligation quote or email info@peacockauction.co.uk

SALE ENTRIES NOW INVITED

Antique & Modern Furniture • Clocks • Books • Ceramics & Glassware • Pictures & Prints • Bicycles
Jewellery & Watches • Collectables • Garage Tools & Equipment • Household Electrical Items • Office
Furniture & Equipment • Retail Products & Stock • Vehicles • Horticultural & Commercial Equipment
Building Materials • Garden Furniture & Effects

www.peacockauction.co.uk



W&H PEACOCK
AUCTIONEERS & VALUERS
01234 266366



Eastcotts Park,
Wallis Way,
Bedford,
MK42 0PE

GEORGE GILLESPIE ROOFING CONTRACTOR

Council Approved

Lead Work

Chimneys

Insurance Work

New Work



Strip and Retile

Facia and Soffits

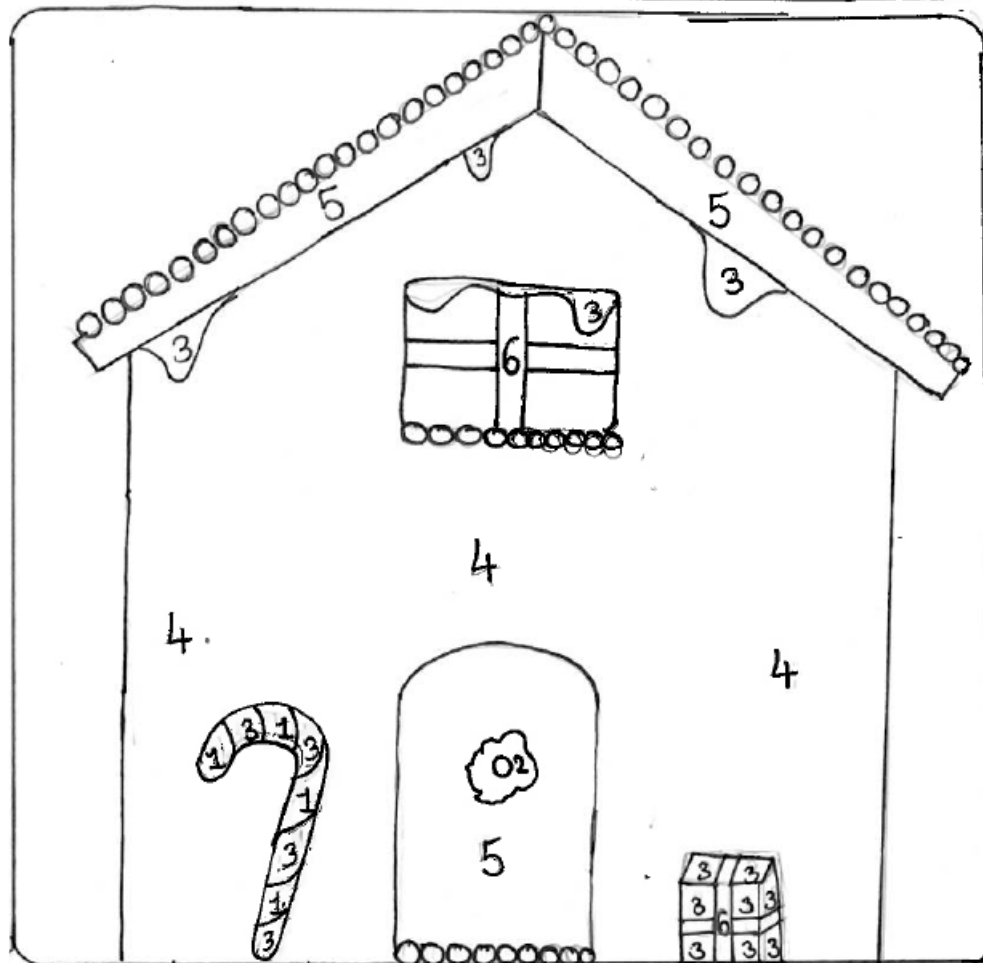
Repair Work

Slating

All Guaranteed

6, Clovelly Way, Bedford, MK41 0BJ
Mob. 07961 986972

Christmas Colour by Number



Key: 1 = Red | 2 = Green | 3 = leave White

4 = Light brown | 5 = Brown | 6 = blue

Tip: Colour the dots however you like

By
Vedha
Year 6

Christmas

Wordsearch

Santa f i h o l e r o g i s m t r t s
P i f e n t i n h e e f o f i f o f n
S o n m a s u f a o o f i e e t o s a f n
t a g k t u h g p l a e o n p a k i s e t o
i r h d i p o y e l l f y g d a o f l s w
r a e u c d l e a y f t a s l e w e a w o
m i f e i n b l o f i l o a s t s a r r f l e
n g i c a r w f h t i l u h a k c g g i s t
r l s u k n o e t o e a s m o a l i l i f n
a f t s i t f l e l g i l i s u m f u n s o
e o s t a g i h p o f l f l o a s t a s a e
C h r i s t m a s c a r f a o s t a r f l e s

Gift Snow tree Family Christmas

Santa Star Scarf Holly Reindeer



By
Lacey Y6

Renhold Village Clubs 2024/2025

Group	Contact	Tel.	Day	Time	Place
Bridge Club-No Fear	David Israel	07816 668578	Every Mon. Every Fri.	9.45-1pm	St. Marks Church Brickhill
Carpet Bowls	Chick	838651	Every Mon. Every Wed.	2-4.00pm 7-9.00pm	RV Hall
Chapel Coffee morning	Albert Brown- ing	772689	2nd Tues.	10-12noon	Chapel
Creative Club	Teresa Trangmar	07788402 441	2nd Mon.	7.30- 9.00pm	Chapter House
KT Yoga		07977 467967	Every Thurs.	7-8.00pm	RV Hall
Luncheon Club	Yvonne Potter	771495	2nd Wed.	12.30 for 1pm	
Mini Athletics		07985520 232	Every Sun.	9-11.30am	RV Hall
Pudding Club for carers	Anne Grant	771811	1st Tues.	2-3.30pm	4, Brookside
Reading Group	Pauline Capell	771858	1st Fri.	4pm	1, Church Close
Renhold pre-school group	Vicky Thomp- son	771724		Term time	
Stitchers	Jackie Croot	870271	3rd Thurs.	10.30- 12.30pm	Chapter House
Table tennis	Ian Smith	07989 470093	Every Mon. Every Wed. Every Fri.	1.30pm 10.30am 10.30am	Church Lane Com- munity Centre
Tang Soo Do	TBA	07591 266614	Every Mon- day	6.30-8pm	RV Hall
Total Warrior Kickboxing	TBA	07450 235946	Every Tuesday	5.45- 8.15pm	RV Hall
Wl.	Jan Tozer	297456	1st Thurs.	7.30pm	RV Hall
Yarn Craft Group	Marion Sutton	217647	Alternate Fridays	10am- 12.30pm	Wilden Village Hall

Mobile Library Times December 2024 and January 2025

<u>Location of Mobile Library</u>	<u>Time</u>	<u>Dec.</u>	<u>Jan.</u>
Renhold - Green End	10:00 - 10:15	10,24	7, 21
Lay-by - Salph End	10.20 -10.35	10,24	7, 21
Renhold - Home Close	10:40 - 10:55	10,24	7, 21
Renhold - Ravensden Road	11:00 - 11:15	10,24	7, 21

Times will vary slightly due to traffic conditions, etc.

For further information about the mobile library service please contact Kempston Library tel. 01234 276453

North Beds Ramblers walk every Saturday

Please note change of start time for afternoon walks – Winter start 13:00 We walk every Saturday afternoon approx. 6 miles and Saturdays twice a month in morning for approx. 12 miles

Dec Walks

7th pm Woburn, 6.6 miles

14th pm Mince Pie Walk, Blunham, 4.5 miles

21st am Wilstead, 5.5 miles or pm Wilstead, 6 miles or both 11.5 miles

28th pm Riseley, 6.3 miles

Jan Walks

4th pm Ampthill Park, West Car Park, 6 miles

11th am Bedford Mowsbury Park, 11 miles or pm Bromham 5.8 miles

18th pm Lidlington, 6 miles

25th am Bedford Station for a London Walk, 9 miles or pm Riseley, 7 miles

Contact; Margaret Sawyer 07780933729 Facebook; North Beds Ramblers
<https://www.ramblers.org.uk/north-bedfordshire>

Christmas Special at the Memory Workout in Renhold on Friday 20th December

Christmas carols, quizzes and tasty treats will be on offer on 20th December at our friendly monthly activity group for people with memory loss at Renhold Baptist Chapel. As well as games and exercises to keep our brains in training we also offer the chance for family carers to learn about the support available in Bedford.

Come and join us from 11am to 12.30pm on the third Friday of each month, or for more information contact Teresa Moon 07930 999573 or email teresa.moon@tibbsdementia.co.uk

Tibbs Dementia Foundation also offer a great range of activities in Bedford, including Music4Memory; art and craft activities; a walking group; fitness classes; indoor bowls; walking football; an allotment; a discussion group; bereavement support and a monthly group outing – ‘Tibbs for Tea’. For more details look at the website www.tibbsdementia.co.uk or phone 01234 210993. **Teresa Moon**

Farewell Robert and Kathy By Rosemary Godwin

Today we say a fond farewell to Kathleen and Robert who have run Oakwood stores, in Renhold for the last 32 years. They moved from London, both giving up successful careers to run a family business, jointly purchasing the shop and Post Office with Kathleen's mum, Linda Powell, who was the sub post mistress until her death in 2015.

Kathleen and Linda set up Renhold Stitchers and ran this together for many years. Kathleen then had a second child; Adam, who was born here in October 1998, who was welcomed by his sister Julia.

Robert has worked tirelessly across the years keeping the shop open and the post office running smoothly, through sun, rain and snow. We have heard many stories over the years of Robert battling through extreme weather conditions to get papers to his customers.

During those years, the shop also supported all Linda's grandchildren through working in the shop alongside their Dad /uncle. Sarah, Alex, Julia, Adam and Jamie all worked in the shop tidying, serving customers and shelf filling. If anyone remembers Bessie Rabbit she was one of their favourite customers who they helped, and she also gave all of them Christmas gifts and wedding presents.

Kathleen has also worked hard supporting the shop and her husband whilst running her own successful business as a textile artist. Very often she'd be working hard indoors and would be called as there were too many customers in the shop and Robert would need help.

Kathleen and Robert have closed their shop doors for one last time and would like to thank everyone for all of their custom over the years which has helped Oakwood Stores be successful and would like to send you all their best wishes.

RENHOLD CONVENIENCE STORE (see opposite)





REMEMBRANCE



Many people gathered at the War Memorial for a moving service to remember those who lost their lives in service to their country. Many wreaths were laid by different organisations in the village and the service was continued in All



Saints church where all the window sills were decorated by different groups in Renhold.

Welcome to Sri and his family who are taking the village shop over from Robert and Kathy. They have been working very hard inside and out and **will open fully on Saturday 16th November**. Their opening hours are
Monday to Friday. 7.30am to 7.00pm,
Saturday 7.30am to 6.30pm
Sunday 8am to 12noon.
 The intention is later to extend the opening hours. We wish them well in their new venture.
 Anne Grant



LA Auto Services

quality and value automotive services

For all your motoring needs:

Car Servicing & Repairs
MoT Testing (incl. Class 7)
Tyres, Wheels & Exhausts
Bodywork Repairs
Winter & Summer checks, etc.
Free local collection & delivery
(by prior arrangement).

Established
1983

Up to 50%
cheaper
than
main dealer
prices!

3 - 5 Shuttleworth Court
Shuttleworth Rd
Bedford, MK41 0EN

Tel: (01234) 354237 / 351431
website: www.laautos.co.uk
email: service@laautos.co.uk



 **Select** Travel Holidays
Home of Cruise Select

As an independent, family owned travel agency,
we're more than just travel agents; **we're travel specialists.**

Sometimes, nothing beats speaking to a human, especially a friendly professional!

01234 326778

www.selecttravelholidays.co.uk

sales@selecttravelholidays.co.uk

24 Mill Street, Bedford, MK40 3HD

BOOK LOCAL, TRAVEL THE WORLD.



BOOK WITH CONFIDENCE ABTA & ATOL protected





At Christmas

'O Magnum Mysterium'

Choral Music for the Christmas Season

**All Saints Church,
Renhold**

on

Tuesday 10th December 2024

at 7:30 p.m.

Conductor: Gary Mudd

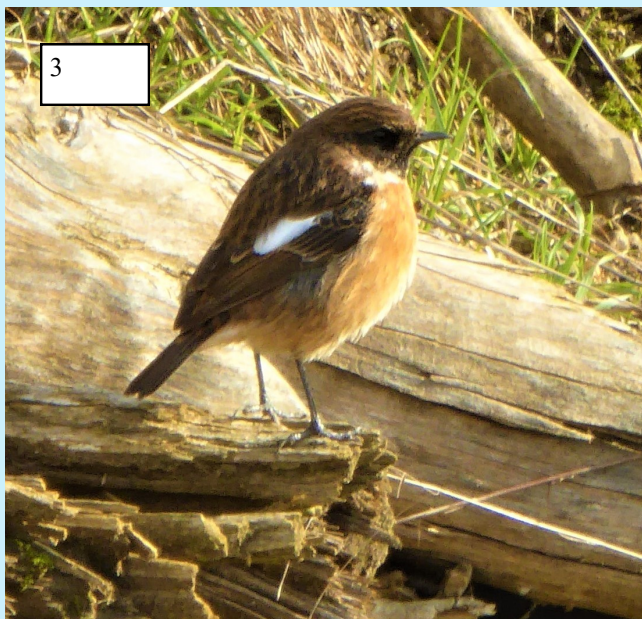
Organ: Paul Edwards

Tickets on door: £10.00 (Including Seasonal Refreshments)

All proceeds to All Saints

WILD ABOUT RENHOLD

(see opposite)



WILD ABOUT RENHOLD by Tony Ploszajski

1. Teasel

The teasel is probably best-known for its brown, prickly stems and conical seed heads, which persist long after the plants themselves have died back for the winter. Between July and August, when teasels are in flower, the spiky flower heads are mostly green with rings of purple flowers. Found in damp grassland and field edges, or on disturbed ground, such as roadside verges and waste grounds, they are visited by bees when in flower, and birds when seeding. The teasel is a tall plant, often reaching the height of a person. They have thorns all the way up their stems and a cone-like flower head that gives the plant the impression of an oversized cotton bud! The flowers are tiny and purple, clustering together and appearing in rings up and down the flower head; the familiar seed heads turn brown in winter. During the nineteenth century, teasels were used extensively within textile mills, where the dried heads were used to comb or tease wool before spinning. The plant was grown extensively in parts of Lancashire to supply the industry. They are still grown commercially on the Somerset Levels where the heads are collected and sold to independent traditional textiles producers.

2. Tawny Mining Bee

Nicky Gribble sent this lovely image of a Tawny Mining Bee that was photographed in a garden in Church End recently, still active in what has been a relatively mild autumn. Tawny Mining Bees are a common species of solitary bee that nests underground, building a little volcano-like mound of soil around the mouth of its burrow. Nests can often be seen in lawns and flowerbeds in gardens and parks, or in mown banks and field margins in farmland and orchards. The females collect pollen and nectar for the larvae, which develop underground (each in a single 'cell' of the nest) and hibernate as pupa over winter. It is a ginger-coloured bee, with the females larger than males and covered in a much denser layer of orange hairs. The males have a distinguishing white tuft of hairs on the face. There are several other species of mining bee that can be difficult to tell apart.

3. Stonechat

Several Stonechats have turned up on farmland around the village in recent weeks, with at least three along the ridge that overlooks Salph End and Ravensden Road and another in the fields between Church End and The Spires. Stonechats are brightly coloured birds with an endearing habit of sitting up on very prominent perches on hedges or tall vegetation. Although they have recently started to breed in Bedfordshire in very small numbers, they are mostly autumn and winter visitors from coastal and heathland areas. As its name suggests, these birds utter a sharp loud call that sounds like two pebbles being tapped together. They eat invertebrates, seeds and fruit such as blackberries, so can survive the winter weather when their insect food becomes harder to find.

SONGBIRDS IN DECLINE Sarah Flynn

Songbird populations have crashed in recent years. More than half of Britain's songbirds are in decline. Playing with your cat for 15-20 minutes a day will reduce the number of songbirds killed by 25 percent. Feeding your cat a meat-rich food cuts the prey figure by 36 percent. Fitting your cat with a brightly-coloured collar and bell reduces bird prey by 40 percent. These days you can buy safety collars that instantly snap open if tugged - ideally cats should be kept indoors from dawn to dusk - to give songbirds a chance.

If you know someone with a cat, do please buy them a safety release collar this Christmas. Britain's songbirds will thank you.

East West Rail Non-Statutory Consultation No. 3. Peter Norris

EWR Co are running a third Non-Statutory Consultation on their preferred version of Route E. It started on 14 November with the release on their website of a considerable amount of information which will take time to look through. They are also holding drop-in sessions at :

- **the old Bedford Girls School Grand Hall on Sat 30 Nov 12–5pm,**
- **the Swan Hotel, Bedford on 9 Dec 2-7pm and again at**
- **Wilden village hall on 11 Dec 2-7pm.**

These are the only local face to face opportunities during the consultation which runs until 24 Jan 2025. There are three 2-hour online sessions plus continuous access to a virtual consultation room – which may be bot-driven. EWR will issue consultation feedback booklets structured to limit comment to what they want to hear back.

There will be a lot to take in so residents are advised to not fill in the feedback form until after Christmas when they have had a good chance to assimilate the information and appreciate the full implications. This is particularly important for people visiting the EWR website early and being presented with the option of making a premature online feedback response. The BFARe (Bedford for a Re-consultation of Route E) Group will post information on its website to assist understanding and its Facebook page will no doubt carry a range of views (see links below).

It is worth placing on record that EWR's recent preference for discontinuous electrification will enable potentially green power for passenger trains on the cheap, but will not provide a solution for freight trains to avoid needing to run by diesel power across the 'gaps'. They are too heavy to be powered by battery. So far in the run up to the consultation, EWR have not mentioned the word freight even once. There is much more to yet come out in respect of this traction technology.

EWR Co will use the consultation feedback to refine their thinking and, rather than providing a feedback report for the public, intend to feed their conclusions directly into the Statutory Consultation that will follow around the end of 2025 prior to their application for a Development Consent Order during 2026.

Since the feedback process has no provision to dissent from the Route E proposal, **BFARe will be relaunching the Government Petition** which was terminated prematurely earlier this year when Parliament was dissolved for the General Election. Signatures collected for that petition could not be carried forward so people wishing to repeat their support will need to register anew. The petition wording does not exclude the concept of a Bedford – Cambridge rail link but makes clear that the route solution as preferred by EWR Co is not acceptable. We continue to press for a more appropriate option running to the South of Bedford to be considered. The BFARe links will include access to the petition site.

Links: EWR Consultation Portal <https://eastwestrail.co.uk/consultation2024>

BFARe Website <https://bfare.org.uk/>

BFFARE Facebook Page <https://www.facebook.com/share/1BK4Er3uSB/>



Renhold Parish Council November Update

EAST WEST RAIL PUBLIC CONSULTATION – HAVE YOUR SAY

Following the government statement as part of the Autumn Budget, a number of communications were issued from East West Rail, including the announcement of East West Rail holding a non-statutory consultation between **14th November 2024 and 24th January 2025**.

East West Rail state that feedback gathered during the consultation will help them further develop and refine the designs, which they will present at a future statutory consultation.

At the time of writing the consultation documents have not been published, only the consultation engagement events details have. Please take some time to add these to your diary, and go along to one of the more local events to find out more on the following dates:

Saturday 30th November 2024 from 12-5pm at Bedford, The Grand Hall

Monday 9th December 2024 from 2-7pm at Bedford Swan Hotel

Wednesday 11th December 2024 from 2-7pm at Wilden Village Hall

It is expected the consultation documents will be available to view at: eastwestrail.co.uk/consultation2024

If you have any questions relating to the project or this consultation, it is advised you please get in touch using contact@eastwestrail.co.uk or 0330 134 0067 or Freepost EAST WEST RAIL and their team will be happy to help.

Once the consultation information has been published the Parish Council will be taking time to review the expected large number of detailed technical documents, which will be discussed initially at the Parish Council meeting scheduled for 21st November. Updates will as usual continue to be shared with the Renhold community across a range of different platforms, with further discussion at the Parish Council meeting on 16th January. The Parish Council will also continue to engage with East West Rail through representation at the Local Stakeholders Group.

VILLAGE HIGHWAYS SAFETY THANK YOU

The Parish Council would like to thank those volunteers who have kindly given up their free time to help improve highways safety in the village. Representatives from the dedicated Community Speedwatch continue to carry out speed checks throughout the village, with grateful thanks for all their efforts. The Parish Council would also like to thank Martin Warwicker who after over five years of downloading data every month from all the vehicle activated devices in the village is stepping back from this.

Renhold has been leading the way for pro-active volunteer led initiatives to improve highways safety on the village roads, which the Parish Council are most grateful for. If there is anyone who would like to kindly find out more about how to help with Community Speedwatch or downloading the vehicle activated sign data, then please do come forward by contacting the Parish Clerk. Lizzie on parishclerk@renhold-pc.gov.uk there is full support and training available with both roles.

COUNCILLORS ENGAGEMENT WITH LOCAL ITEMS

Parish Council representatives have continued to take the time to attend a number of local events to represent Renhold regarding a range of different items such as:

Attendance at village Remembrance service

Walkround the Stagecoach bus depot

Councillors attended the Bedfordshire Police and NFU Rural Crime Event (contd overleaf).

VILLAGE IMPROVEMENTS

As previously reported, the Parish Council continue to work with local partners such as Bedford Borough Council, Orbit homes and the local police to see improvements to the village. The Parish Council also continue to remain pro-active themselves and have recently arranged the installation of a new seat for the Green End bus shelter.

PLANNING EXPLAINED REMINDER.

The Parish Council are aware that the planning process can appear to be complicated. In order to try and explain more about the different planning systems depending on the planning matter being considered, the Parish Council decided to collate a guide document to try and assist residents.

To access a copy of this document please head to: <https://renhold-pc.gov.uk/parish-council/minutes-agendas-other-documents> and you will see a document titled 'RPC Planning Guide June 2024' which gives an overview of planning.

PARISH COUNCIL MEETING DATES The Parish Council keep their website up to date, and you can find the latest Parish Council minutes here: <https://renhold-pc.gov.uk>

It is always more interesting to attend a Parish Council meeting in person to see what goes on and the range of items covered in trying to move improvements for the Renhold community going forwards. Dates have been set now, with meetings on a Thursday starting at 7pm. All dates have been booked in with Renhold Village Hall, if you head to the right as you come in the main door, you will find the Parish Council meeting in the Committee Room.

We regularly invite individuals to join Parish Council meetings to promote local engagement, this has included a range of Borough Council Officers, elected Borough Councillor Members, as well as local community representatives, so they can hear local issues first hand as well as from village organisations to look at ways to work together. Do please remember that everyone is most welcome to join us, on 16th January, 27th February, 3rd April, 15th May, 23rd June and 28th July.

CONTACTING THE PARISH COUNCIL

Please remember everyone is welcome to contact the Clerk or any Councillors about local matters. A full list of contact details is available as usual in the Magazine directory, so do make a note. The best way now to contact Lizzie, Parish Clerk is on: parishclerk@renhold-pc.gov.uk for Parish Councillors the pattern is place their forename followed by @renhold-pc.gov.uk

A letter from Martin Warwicker.

Dear All, I have decided to suspend the downloading and collation of vehicle/speed data. I have been doing this monthly for over 5 years, providing the collated data to Bedford Borough Council, Bedfordshire Police and the Renhold magazine. During this time we have amassed a considerable amount of data, all of which is reasonably consistent with regard to vehicle volumes and speeds entering and leaving the units' areas. We met with the Rural Police Team in January to follow up on the information we had previously provided and requested enforcement in Ravensden Rd. To my knowledge this never materialised. This is unfortunate, but their resources are spread pretty thinly and it comes as no great surprise.

When we first embarked on gathering and disseminating this data we were at the forefront. Subsequently, many more parishes have followed our example and now collect and disseminate their data as well. I am sure that Beds Borough and Beds Police are now swamped with data on which their resources would struggle to provide follow up action .

As those with the power to act have not/cannot/will not, it seems rather pointless to dedicate those hours currently expended monthly (FYI - downloading 4 devices takes about 1 hour with the travel, and the conversion of download data into spread sheets and dissemination etc takes approx. 2-3 hrs).

All the past data is stored if required in future, and the devices will continue to display reminders to drivers - which is their main purpose. The data shows they do have a slight positive effect in reducing violation numbers, although, unfortunately, not as much as we would like. The impact of the published data in the magazine and on the web site, I would suggest, is minimal. If anyone is able to kindly volunteer their time to carry on with the data downloading please do come forward and contact the Parish Clerk. Regards Martin

Borough Councillor Report

Hello everyone.

Once again, this has been a very busy time for me and particularly sad following the October 19th natural gas explosion on Cleat Hill, Ravensden and the tragic death of two residents. As we speak there are 50 households that are displaced from their homes and living in temporary accommodation while the area is made safe for them to return. Progress on ensuring the site will be safe, now and in the future, is taking time. The experts involved are being very thorough and will not allow anyone back into their homes until it is deemed safe. The affected people are being incredibly stoical and patient and the community has rallied to make life as easy for them as possible while they are away from home. I really am hoping that everyone can return permanently as soon as possible.

We have had the dreaded budget and the news that the Government has given the green light to build the East-West rail link through Bedford and the north of the county onto the A1 and beyond. This proposal WILL affect us all in the immediate area and further so it is vital that you understand the impact on our community. Whatever your feelings about EWR, it is very important that you make your feelings known. Details how to do so are in an article by Peter Norris in the magazine. Please also contact me if you need help.

I attended a Rural Crime Event on the 6th November with Cllrs Brunsdon & Roberts. The Police and Crime Commissioner and the Assistant Chief Constable were present to listen to concerns from a wide range of people. We were able to express our frustration at the lack of action over speeding in our village in spite of the sterling work of Speed-Watch and the PC in providing data that shows the extent of our problem in Renhold. I also gained a commitment from the PCC, John Tizard, to come to the Ward to answer questions directly. This will be in the New Year, details to be confirmed.

The weekend just gone was Remembrance and the number of people who attended the service at Renhold War Memorial was heartening to see. Next year is the 80th anniversary of the end of the Second World War in Europe; the war in the Far East continued until the surrender of Japan in August 1945. It seems a life time away for many as those directly involved pass away. Conflict continues however and we must keep the sacrifice of others at the forefront of our memories, certainly at this time of year. Thanks to all involved in arranging the service.

Lastly, myself and Parish Councillors from both Renhold & Ravensden attended a 'Behind the Buses' event at the St John's Stagecoach bus depot. It was a very informative afternoon that gave us all an insight into running a bus service on a shoe-string with daily challenges. We saw the operations department, the bus-painting area, engineering and mechanical garage and the upholstery shop. The staff were amazing, friendly and we left with a reasonable idea of their day-to-day work- very important when rural services are being scrutinised. Oh, and I drove a bus! A busy time for me so I will now sign off and as this is a double issue, wish you all a very Happy Christmas. See you in 2025...!

Cllr Nicola Gribble Nicola.gribble@bedford.gov.uk Mob- 07955530234

RENHOLD PARISH COUNCIL 2024/2025

Clerk to the Council: Mrs Lizzie Barnicoat

PO Box 1548, Bedford MK44 5AX

Tel: (01234) 771702 email: parishclerk@renhold-pc.gov.uk

Councillor	Phone	e-mail
Susan Brunsden	266281	susan@renhold-pc.gov.uk
Fiona Cardinale	07762 881009	fiona@renhold-pc.gov.uk
Margaret Dean	771520	margaret@renhold-pc.gov.uk
Nicky Gribble	771994	nicky@renhold-pc.gov.uk
Darren Rayner	07825 950673	darren@renhold-pc.gov.uk
Julie Roberts	07766 478974	julie@renhold-pc.gov.uk
Martin Warwicker	07983 156845	martin@renhold-pc.gov.uk

Parish Council Meeting dates & venues for 2024/2025

Parish Council meetings now start at 7pm.

The next meeting of the Parish Council will be from 7pm — 8.30pm on Thursday 16th January. Dates after that, 27th February, 3rd April, 15th May, 23rd June and 28th July

As always, if you wish to raise any ideas or make comments to the Parish Council, then please contact one of the Parish Councillors (see above or the new Parish Council website (renhold-pc.co.uk) for contact details) or contact Lizzie, Parish Clerk on 771702 or email parishclerk@renhold-pc.gov.uk

Jokes

1. Did you hear about the Buddhist who refused Novocain during a root-canal? His goal: transcendental medication.
2. There was the person who sent ten puns to friends, with the hope that at least one of the puns would make them laugh. No pun in ten did.
3. Atheism is a non-prophet organization.
4. Two hats were hanging on a hat rack in the hallway. One hat said to the other: 'You stay here; I'll go on a head.'
5. A vulture carrying two dead raccoons boards an airplane. The stewardess looks at him and says, 'I'm sorry, sir, only one carrion allowed per passenger.'

RENHOLD CHAPEL

Sunday Services

Chapel Preachers

December 2024

1st December	10.30am	Mr. Paul Sands
8th December	10.30am	Mr. Steve Guest
15th December	10.30am	Mr. Steve Guest
22nd December	10.30am	Mr Doug McWilliams (Candle light)
29th December	10.30am	Mr. Richard Crane

January 2025

5th January	10.30am	Mr. Alan Dinnie
12th January	10.30am	Mr. Steve Guest
19th January	10.30am	Mr. Roger Smith
26th January	10.30am	Mr. Paul Bridle

CHAPEL NOTES

I think we would all agree we are living in a very troubled world and with so much unrest going on in many countries there is not much peace around. We live in an “instant” world, and even in our own homes when there is a lot of noise and activity going on, we can get very stressed with lots to juggle everyday. Nowhere is very peaceful. It is lovely to get away from it all and have a break, or a walk in the country away from the hectic pace of life and enjoy a bit of peace. We all need this peace on occasions to calm us from everyday life. Christmas time too can be rather fraught for, as families come together there can be frictions and it isn't a very peaceful time for some.

However the true meaning of Christmas is about real peace. Jesus came to be “The Prince of Peace”. That was one of the names given to him that we read about in Isaiah chapter 9. The angels told the shepherds that there was “Good news of great Joy” because Jesus had been born, and said “Glory to God in the highest and on earth peace to men.” He came to bring peace between us and God, which he did some 33 years later, when he took the barrier away. Sin is the barrier between us and God and He took the punishment when he died on the cross. If we believe he did this for us, and ask him to forgive us, we can have this barrier taken away and have real peace, as we know God as our heavenly father who will watch over us all through our life and take us to be with him one day. He can keep us in peace even in the midst of trying circumstances if we keep our minds focused on Him. This Christmas, amidst all the hustle and bustle of preparations, may we find the “Prince of Peace” and know the true peace that only He can bring.

On behalf of the Chapel we wish you all a very Happy, and Peaceful Christmas and New Year.



Qualified nail technician

Local technician in the Cranbourne Gardens estate

Look me up on Facebook:
@karonthenailfairy

To book text: 07745640150

Grow your nails with a gel overlay (biab)
by
The Gel Bottle



Window Cleaning

Using purified water technology safe working practices and fully insured.

www.sswindowcleaning.co.uk

**Steve White Services,
59, Church End, Renhold,
Bedford, MK41 0LX.**

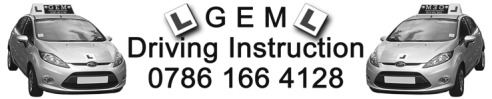
Tel: 01234 772327 (Ans m/c)

Mobile: 07731466553

E mail

stevewhite@sswindowcleaning.co.uk

PLEASE LEAVE NAME, ADDRESS
AND PHONE NUMBER



We teach safe driving for life, not just for your Test

DSA Approved Driving Instructor (Car)

IAM Registered Instructor

Grade 'A' Instructor

CRB Checked

Free Points of Reference guides included

Based locally, a calm, patient and friendly instructor specialising in nervous pupils

Contact Geoff on 0786 166 4128
or visit us at

www.gemdrivinginstruction.co.uk

Please scan QR Code below for details



*Bespoke floral creations for any occasion
designed and made for you by*

The Flower Angel

*Please call or text your Renhold-based florist
on 07519 721520*



RAVENS DEN Service Station

Est. 1983



Your Friendly Local
Service & Repair Centre

MOT Testing
Servicing & Repairs

Batteries & Exhausts

Tyres & Tracking

Air Conditioning

Diagnostics

Recovery/Bodywork (Arranged)

All Makes & Models

FREE Local Collection & Delivery

Telephone: 01234 771347

Bedford Road • Ravensden • MK44 2RA



Stunning, seasonal cut flowers grown in the walled garden at Howbury Hall in Renhold

- Regular doorstep deliveries for the home
- Bouquet deliveries
- Wedding and event flowers
- Sympathy tributes
- Wholesale flowers for local florists
- Garden visits and workshops when permitted

Beautiful flowers that don't cost the earth

howburyfarmflowers.co.uk

e: flowers@howburyfarmflowers.co.uk

Tel: 07870 517803 or 07786 038891

Henry's Garden Services

Your outdoors taken care of

Just "Leaf" it to me!

Garden

Home

Property Maintenance

Please call, text or email: 07715 972090



THE DAIRY CAFE
at FRANKLINS FARM

Farm Shop & Butchery

www.franklinsfarmbutchers.co.uk

Free Range Poultry, Beef, Lamb & Pork

[This Photo](#) by

Serving fabulous Food, Coffee & Cake

Full English breakfast with Franklins sausages, bacon & eggs

Breakfast, Brunch, Light Lunches, Snacks, Hot & Cold Drinks

at Thorncote Green, Nr Sandy SG19 1PU, 01767 627644



Baobab Social Care Ltd
EXCELLENT CARE AND SUPPORT SERVICES

At Baobab Social Care we provide excellent care

- ☞ Practical Support
- ☞ Care & Compassion
- ☞ Peg Medication & Feed
- ☞ Meal Preparation
- ☞ Assistance with Light Householder Duties
- ☞ Days Out
- ☞ Emotional Support
- ☞ Personal Care
- ☞ Medication
- ☞ Appointments
- ☞ Sitting Service/ Companionship



BAOBAB SOCIAL CARE

For more information Please contact:

Telephone: 0800 009 6313

Email: info@baobabsocialcare.co.uk

Plumbing, Heating and Air Conditioning

Mobile: 07717 756677

Contact: Roger Flanagan



Local, family run business

Domestic & Commercial

Office: 01234 771396

R.J.F. Plumbing, Heating and Mechanical Services Ltd

Email: info@rjf-plumbing.co.uk



LOCAL LOCKSMITH

07860482994

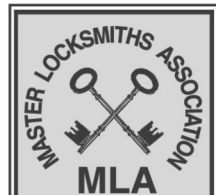
SPECIALIST IN UPVC & COMPOSITE DOORS

- SAFES - LOCKS - HANDLES
- ANTI SNAP CYLINDERS - WINDOWS
- REALIGNMENT & SERVICE

FREE SURVEY AND QUOTE

☎ 01234 262625

GEMINI LOCK & SAFE



APPROVED COMPANY

LICENSE NO: 001662

WEBSITE - WWW.GEMINILOCKANDSAFE.CO.UK

EMAIL - INFO@GEMINILOCKANDSAFE.CO.UK

RENHOLD VILLAGE DIRECTORY

All Saints Church

Parish Priest

Rev. Ian Smith
e: renhold.rev@gmail.com
772794

Churchwardens

Alan Bloomfield
351162
Keith Timms
772605

Lay Vice Chair

Alan Bloomfield
351162

Secretary to PCC

Ann Timms
772605
Jill Burrows
07710228995

Verger

Ann Timms
772605

Treasurer

Christine Smith
772794

Bell Tower Coordinator

Yvonne Potter
771495

Churchyard Volunteers

Teresa Trangmar
07788 402441

Messy Church

Caroline Coster
caroline.coster@ntlworld.com

Renhold Chapel

Mr Albert Browning
772689

Brownie Pack

Amanda
1strenholdbrownies
@gmail.com

Renhold School

771724

Chapel Coffee Morning

Albert Browning
722689

Preschool Group

Term time
Vicky Thompson
771724

Renhold Bridge Club

TBA

Magazine

Anne Grant
771811

Carpet Bowls Club

Chick
838651

Football Club

Mr K. Harlow
871178

Village Hall Bookings

07523 667232

Women's Institute

President

Jooles Roberts
07766 478974

Secretary

Jill Barrell
870461

Treasurer

Jan Tozer
297456

Renhold Stitches

Jackie Croot
870271

Reading Group

Pauline Capell
771858

Pudding Club for Carers

Anne Grant
771811

Creative Club

Teresa Trangmar
07788 402441

Table Tennis

Ian Smith
07989 470093

Luncheon Club

Yvonne Potter
771495

Borough Council

267422

Borough Councillors

Nicola Gribble
07955 530234

Renhold Village Agent

Lydia Wright
0800 039 1234

Parish Councillors

See page 26

Neighbourhood Plan

Amanda Quince
870704

NHS Direct (non-emergency

medical helpline): 111

Bedford Hospital

355122

Police: 999, 101 or
841212

Sgt. Sarah Cluff

PC Vito Napoli

PCSO Stephen Tarabella

North East Beds MP

Richard Fuller
01767 313385

Bedford MP

Mohammed Yasin
tel:01234 346525



Muskett Flooring

Carpets, Wood, Laminate, Vinyl & LVT Ltd

w: www.muskettflooring.co.uk

e: muskettflooring@yahoo.com

mob: 07788 952720

tel: 01767 641008

Unit 20, High Barns Farm,
Roxton, Beds, MK44 3ET

Domestic & Commercial Installations



Your local carpet fitter

The Polhill Arms, Renhold

Boutique village pub serving a great selection of real ales, wines, spirits & more

Food available Thursday - Sunday

Seasonal events

Family & dog friendly

A warm welcome awaits

25 Wilden Road, Renhold, Bedford, MK41 0JP O1234 771398

For pub
news...
follow us on
facebook

Odell & Son Plumbing and Heating

Local family run business, same day service, no job too small, O.A.P. rates

Gas leaks, boiler breakdowns, installations & servicing.

Power flushing, cookers & fires fitted & fixed, bathroom installations, toilets, ball valves, water mains, burst pipes, showers, new radiators & outside taps.

Special Offer:

Fixed price

Boiler Service only £60

**Gas safe
registered**

37, Ridge Rd.

Kempston MK43 9BS

Tel: 01234 855007

Mobile: 07795 821595

SJB DECORATING SERVICES

- DOMESTIC & COMMERCIAL
- INTERIOR & EXTERIOR
- WALLPAPERING SPECIALIST

20 Church End, Renhold
Bedford MK41 0LU
01234 772024
07900 257737
sjbdec@hotmail.co.uk

Ian Locke Electrical Contractor

Part P Approved



A member of the National Association
of Professional Inspectors and Testers



Domestic and Commercial Electrical Installations

- Partial or Full Rewires - Consumer Unit upgrades - Earthing -
- Inspection and Testing - Fault Finding - Repairs -
- Portable Appliance Testing -
- Extra Sockets & Lights - Sheds & Garages - Low Energy Lighting -

Frank Locke & Sons
Broadlands Farm
Wilden Rd, Renhold
Bedford, MK41 0JJ

office: 01234 771 314
mobile: 07885 457 889
email: FLS439@btinternet.com



Microsuction/Ear Wax Removal Clinics

www.letshearit.co.uk

Do you suffer with blocked/uncomfortable ears?
Pip is a senior audiologist with 25 years experience

To book a consultation contact Pip on
07734227745

Email: pip@letshearit.co.uk or book
online at www.letshearit.co.uk

* Manyweathers Chiropractic Clinic,
Maulden

* Bedford Consulting Rooms, Bedford

PC Upgrade Computer Repairs

Computer Repairs, Service & Upgrades
No problem too big or too small

Home and Business Systems

Windows/Mac/Smartphones/Printers/
Networking

Wifi Setup/Virus removal/
Data Recovery

Bedford & surrounding villages

- Established 1999 in Keysoe

Call Richard or Sammy
0771 289 3771/01234 709411

tech@pcupgrade.org
www.pcupgrade.org
Facebook/[pcupgrade](https://www.facebook.com/pcupgrade)

HAPPY PLACE, RESTORED

If you love your lawn,
you'll love GreenThumb.
Our year-round treatments
will give your grass
the TLC it deserves,
so you get a lawn you
can feel good about.



GreenThumb
LAWN TREATMENT SERVICE



Discover more at greenthumb.co.uk

Scan
here

Bedford & Huntingdon

01234 709345 or 01480 597432 bedford@greenthumb.co.uk

PELL'S FARM SHOP & NURSERY

RENHOLD RD,
WILDEN, MK44 2PT
Open 7 days / wk

Visit our friendly family-run farm shop for a huge selection of:

- vegetables grown here on our farm
- potatoes & fresh fruit
- milk, bread & cakes
- cheeses, meat and pies

And, in our nursery, a massive range of:

- bedding plants, trees & shrubs
- perennials, composts
- coal, logs & bird food
- pots & garden essentials

... and all at extremely competitive prices!



BLOOMFIELD

WEALTH MANAGEMENT

Investment planning

Pension transfers & switches



Thomas Murphy **Wealth Manager**

M: 07747 621373

E: tom.murphy@bloomfieldwealth.co.uk

Bloomfield Wealth Management is a trading name of Chic Kending Limited.

Chic Kending Limited is authorised and regulated by the Financial Conduct Authority.

Registered in the UK at 183 Clifton Road, Shefford, Bedfordshire, SG17 5AH. Company number 07167235.



SOFAS • DINING • BEDS • FLOORING • FITTED KITCHENS & BEDROOMS