



Oakley Newsletter



Summer 2021

Number 87

Look inside for

Church Clock Donations Needed

Oakley Pre-School Brick Appeal

East West Rail Consultation

Oakley Annual Parish Meeting

Fairy Garden Open Days

Emmaus Village Update

Church Services



Front Cover : Summer Fields
By **Maisie Buckhurst (9)**

The Oakley Newsletter

is published quarterly by Oakley Parish Council and delivered by parish councillors free to every house in Oakley – about 1,000 copies.

Opinions and information

in the Newsletter, both text and adverts, may not be endorsed by the Editor or the Parish Council.

Next issue

Final copy date for the Summer issue is 27th Aug 2021. The publishing date is 1st Sept 2021.

Advertising rates

Colour Advertisements
Quarter page: £30

Half page: £60

Whole page: £120

Four consecutive quarter page adverts - discount 10%

Black & white advert rates are available upon request.

Loose inserts, any size up to A4: £100
Invoices will be issued by Ann Paice, with payment to Oakley Parish Council.

Editor

Bill Chalker
13 Bevery Close
Oakley
MK43 7SH



07789 997733 **Replacement email**
bill@chalker.eclipse.co.uk

Printers

White Hart Press
58a York Street
Bedford MK40 3RL



Hello Children

look out for
Ten more
little ones



Parish Council News

Summer 2021

Hello Everyone,

In recognition of the passing of HRH The Prince Philip Duke of Edinburgh, on behalf of the residents of Oakley, the Parish Council arranged for our Union Flag to be flown at half mast from the day of his death until 8am on the day following his funeral.

Speed Watch

In accordance with Coronavirus Regulations you will now be seeing our speed watch personnel operating from time to time around the village. Our monitoring equipment and average speed cameras have been operating as normal. Our aim is to keep our roads in Oakley as safe as we can from speeding motorists. Please comply with speed limits at all times, not only in Oakley but everywhere. Should you wish to join our very friendly speed watch group then please give me a call.

Dual Purpose Bins

Over the last few weeks it has been sad to see some of our bins around the village overflowing. There have been occasions when Bedford Borough Council have let us down by not emptying them. This is annoying and unacceptable, but a full bin does not mean that people can throw their rubbish on the ground nor just leave it on top of the bin. In such circumstances please take your rubbish/dog poo to the next available bin or take it home and put it in your own appropriate bin. My colleagues on the Parish Council and our families, and I know other caring residents, have spent time picking up other peoples' strewn rubbish. Please help us and do not leave litter/dog poo.

Pavement/Verge Parking

Please remember and respect the 'No verge parking scheme' in Lincroft, Hunts Path and Copthorne Close. We have been assured that Bedford Borough Enforcement Wardens will visit regularly with a view to enforcement by issuing tickets. They will also attend to other illegal parking within their remit such as the yellow lines at High Street/Reynes Drive junction.

OAKLEY PARISH COUNCIL

PARISH CLERK

Ann Paice
31 Radwell Road
Milton Ernest
Bedford, MK44 1SH.
07873 887370
parishclerk@oakleyvillage.co.uk

CHAIR

Paul Phillips
3 Station Road. 824260
paulphillips65@gmail.com

VICE CHAIR

Jane Walker
(Parish and Borough councillor) 11 Dewlands
07952 879587
jane@janewalker.co.uk

Jonathan Abbott

(Parish and Borough councillor)
13 The Furlong 950868
jonathan.abbott71@icloud.com

Pat Olney

33 Station Road. 824384
pat.olney@btopenworld.com

Sara Fardon

61 Lincroft. 824516
sarafardon@yahoo.co.uk

Michael Frampton

The Little House, The Drive
822181
michael_frampton@btinternet.com

Phyllis Jones

35 Ruffs Furze 910187
phylmaj@gmail.com

Stephen Nicholas

44, Grenidge Way 824345
sbnicholas@aol.com

Gerry Sansom

21 Pavenham Road.
823295
gerrysan-
som@btinternet.com

Robert Saunders

College Farm. 822328
rjsaunders5591@gmail.com

Paul White

20 Reynes Drive. 825472
paulwhite20rd@gmail.com

Pavement/Verge Parking - continued

It seems that an increasing number of motorists think that it is acceptable to park on the pavement or on the verge, rather than park on the road WHERE THEY SHOULD BE. Please do not do it; keep our verges looking nice and cared for and keep our pavements for purpose for which they were intended.

Linch Furlong

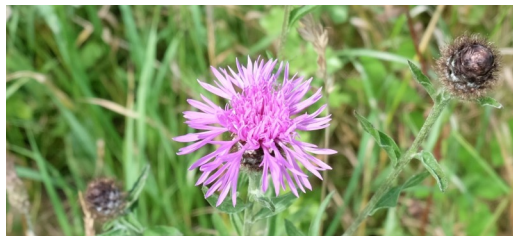
The changing days, weeks, months and seasons can be seen so very clearly in Linch Furlong, a part of the village we are very proud of. The first sight of blue violets emerged in early spring coinciding with Mothers' Day and before we knew it, adjacent to every footpath was a carpet of blue and as we admired them these delicate but well-formed flowers stood 'tall' for us. They lasted quite a while and long enough for the beautiful cowslips to take their place. To me the display of cowslips in Linch Furlong has been outstanding. The photographs will act as a reminder to those who visited Linch Furlong and for those who did not I hope they will show what delights are available to us.



Highfield Road Railway Bridge.

I thought I should let you know that we still do not know what is happening about the unsightly mess on Highfield Road Bridge. Network Rail have submitted slightly amended plans to Bedford Borough Council for alterations to this bridge.

Their proposals will not improve its overall appearance from what they have done to it already. They are proposing to put a brick fascia over the copings designed to match the existing brickwork and an improved criss /cross wire at each end in place of the Arris fencing that is there at present. New parapets need building which are in keeping with the amenity of the village. The Parish Council has objected all along and continues to do so. Though the consultation period will have ended by the time you receive this newsletter, if you have a view then I think you should express it to Bedford Borough Council Planning Department or to www.bedford.gov.uk/searchplans and follow the links. The reference number is 20/02157/P18.



I think my job is done and I will sign off. Before doing so can I once again

thank all of the Parish Councillors for what they do for the good of our village and all of the other volunteers who give their time so generously. Thanks as always to Bill Chalker, our Newsletter Editor, who continues to do a sterling job and to you for your support and for reading this newsletter. I wish you a healthy, safe and enjoyable summer and that the rain and the rather cool temperatures are soon replaced with something more seasonal.

Paul Phillips , Chairman.

Good news!

The Villager Minibus

will resume normal full service from the 21st June



They are run and operated by volunteers and provide transport facilities to town and village communities throughout North-Bedfordshire via a scheduled timetable*.

They own and operate one bus which is designed for easy access. Anyone can use the Villager and bus passes are accepted on all routes.

Volunteering - The Villager is always pleased to hear from anyone interested in becoming a volunteer driver.

Community Hire - The Villager provides community hire facilities, subject to certain conditions (mainly relating to availability of a bus and licences). The purpose of the hire must be recreational and benefit members of the local community.

*To find out more about the Villager Minibus, including bus routes and timetables then visit www.sharnbrookvillagerminibus.co.uk

My contact email is changing



Note from the Editor



Just when you think things are going according to plan along comes another ripple in the fabric of life. Maybe not on the scale of a pandemic but enough to cause a lot of hassle to fix.

When I started as Editor I was concerned that if I was out and about my usual email would not work if I was away from home so I invested in my own Domain name which my mobile phone service could access. But Microsoft have cut off third party domains because of security issues so I lost access to it from 30 April 2021 .

So for future emails please use

bill@chalker.eclipse.co.uk

Bus travel consultation



In December 2021 Bedford Borough Council will be tendering the Rural Public Bus Network.

As part of the review we are keen to hear about how residents currently use transport around the Borough and how we may improve transport services offered to the public.

Responses will be used to formulate the council's approach to the 'Rural Public Bus Network Review'.

The survey will be available online or alternatively you can fill out the survey over the phone by contacting Bus Info 01234 718005. Responses must be received by the end of 11 June 2021.

You can respond to the survey here:

www.bedford.gov.uk/bustravel

or if you are unable to complete the survey online then call Bus Info on 01234 718005 where a member of customer services will help fill out the form for you over the phone.

WHITE'S Lawnmowers & Garden Machinery

Sales ~ Service ~ Parts ~ Hire
Briggs & Stratton Service Centre

STIHL **STIGA** **AL-KO**



LAWNFLITE **MTD** **Indespension**
... & many more

LARGE SELECTION FOR ALL YOUR GARDENING NEEDS

01234 826066
info@whites-online.co.uk

www.whites-online.co.uk
College Farm, Oakley, Bedford, Bedfordshire, MK43 7RX

Voted N° 1 Salon in the UK

Hazel Kaye Hair, Beauty & Facial Aesthetics



Order/Book Online



"We look forward to seeing you soon!" *Hazel, Proprietor*

Stockists of premium hair, beauty & fragrance brands and gift vouchers



40 High Street, Oakley, Bedfordshire, MK43 7RG  
Tel:01234 826502,e:hazel@hazelkaye.com www.hazelkaye.com

Borough Council Report

Unfortunately, we are currently seeing the rise of a potential third wave of Covid-19 as I write this. This is happening at a time when the lockdown is at last being eased. I felt it was timely to remind people not to become complacent as a new normal returns.

Anyone showing symptoms of COVID-19 must self-isolate immediately and book a PCR test by calling 119 or visiting www.gov.uk/get-coronavirus-test

Do you have symptoms?

A high temperature, a new persistent cough, a change in sense of taste or smell

GET TESTED!

Free tests are available in Bedford. Book your test at nhs.uk/coronavirus or by calling 119 now.

- If you have any of the symptoms of coronavirus you must self-isolate and get tested.
- No one in your household should leave home if anyone has symptoms.
- If you test positive for coronavirus, you must share information about where you have been and who you have met, with the NHS Test and Trace service, helping us all to stop the virus spreading and save lives.

#StayHomeSaveLives #ProtectBedfordBorough
#ProtectTheNHS

Boundary Commission

You will have seen that the Local Government Boundary Commission for England has opened a public consultation on its new draft recommendations for new electoral arrangements for Bedford Borough Council. The consultation closes on 5 July 2021.

The new draft recommendations propose that 46 borough councillors should be elected to Bedford Borough Council in future. The recommendations also propose new electoral ward boundaries across the borough.

This means that the current Oakley Ward would be broken up and the parish of Oakley will join with the parish of Clapham in a new Oakley/Clapham ward. It is proposed that Pavenham would join Sharnbrook ward and Stevington would become part of a new Bromham Ward.

Responses to the consultation can be made directly through the specialist consultation portal: <https://consultation.lgbce.org.uk>

Bedford High Street

Bedford Borough Council has been awarded an £80,000 grant from Historic England as part of the Bedford High Streets Heritage Action Zone (HSHAZ) Cultural Programme, which is being delivered by the HAZ Cultural Consortium and supported by Bedford BID and SEMLEP.

The grant will help to create and deliver community-led cultural activities on Bedford High Street and make the area a more attractive, engaging and vibrant place for people to live, work and spend time. Bedford's programme will reflect on the past and present lives of people and places in the town and how their stories interweave with experiences of the High Street and its buildings, businesses and public spaces.

The Cultural Programme aims to transform visitors' experience of the local High Street and draw attention to the hidden treasures of Bedford's heritage.

The programme will start with a pilot scheme – The Vault, which aims to tell the story of a hidden bank vault beneath the Bank site at the junction of High Street and the Embankment. The pilot scheme will be revealed on the Spring Bank Holiday.

The Higgins Bedford

The Higgins Bedford reopened its doors and welcomed visitors back on 18th May, following the easing of national restrictions. The museum has returned to its usual opening hours of Tuesday – Saturday 11am – 5pm and Sunday 2pm – 5pm.

Visitors once again are able to enjoy displays telling the story of the local area, alongside nationally significant collections of art and design.

Measures are in place for the safety of visitors, volunteers and staff, and to help ensure an enjoyable experience for all. This includes reducing the capacity of the museum to ensure that people can socially distance. Visitors will need to book a free timed entry ticket online in advance by visiting www.thehigginsbedford.org.uk or by calling 01234 718044 (line open 11am-3pm Monday-Friday).

Everyone visiting The Higgins Bedford must wear a face covering, except for children under 11 or for the legitimate reasons set out in Government guidance. Visitors must only visit in groups of up to six people or two households.

Councillor Jon Abbott

Telephone: 07784 549180

Email: jonathan.abbott71@icloud.com

Girlguiding in Oakley

Oakley has two guiding units – Rainbows for girls aged 5 -7, and Brownies for girls aged 7-10.

If you would like to enrol your daughter in either of these units or any other unit locally, please register your daughter at <https://www.girlguiding.org.uk/information-for-parents/register-your-daughter/>

If you would like more information about the individual units before you register your daughter, you can use the contact details below.



1st Oakley Rainbows (Wednesdays)

We have been meeting on Zoom since last March, completing badges and having fun with games and songs. We have also met members of other units – Rainbows, Brownies and senior section, from all over North Bedfordshire. We cannot wait to start meeting in person again – we will be doing this outdoors this term, hopefully meeting indoors at the Village Hall again in September.

Unit contact: Amanda Keen (Assistant Leader) oakleyclaphamrainbows@outlook.com

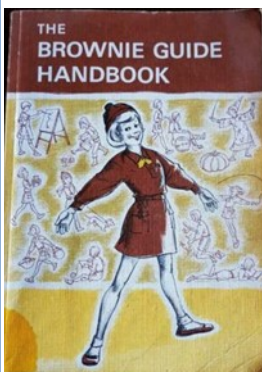


1st Oakley Brownies (Fridays)

After a whole year of Zoom meetings Brownies returned to face-to-face meetings this April. We decided to meet outside which meant we did not have to restrict our numbers to 15 as we currently would for indoor meetings. The Brownies have enjoyed playing lots of games, working in sixes, painting stones and learning about the history of the unit. We had a visit from Pat

Olney, who founded Oakley Brownies 50 years ago. We enjoyed hearing about the early days of Brownies and seeing pictures, cards and a Brownie uniform from that time. Talking about the singing, games, badges and outings we realised that many things had not changed since 1971 (apart from having meetings on Zoom!)

Unit contact:
Lindsay Saunders (Leader)
oakleybrownies452@gmail.com



Aspiring Young Artist on Front Cover

Maisie aged nine has lived in Oakley all of her life and is passionate about art.

"I enjoy all kinds of art. Painting, sketching, doodling and collages and I have started going to an art club.

I love art because it's peaceful, fun and creative!"

Are you a budding artist and would you like to join Maisie's art on the front cover then contact the Editor (details on inside of front cover) who can help image or photograph your work.



College Farm Update

The weather

Once again, we have just had another dry spring after an incredibly wet winter, this year though it has been dry and cold which is not good for the crops. Thankfully, rain arrived just in time but what we could really do with now is some warm sunshine. I should not be writing this on a dreary late May day contemplating lighting the fire for some warmth!



Cattle

The cattle are out grazing the meadows. We turned them out a couple of weeks later than usual as the grass had not grown enough. They are still being given some extra silage as the grass is not growing as fast as they are eating it, which is due to the low temperatures.

Spring work

A few weeks ago we had caught up with our spring work and needed some rain to get crops growing. Now we are being held up by the wet weather. Normally by now we would have been silaging grass for next winter's feed. We have lots to do once the weather improves!

Swans' nests

Sadly, due to the rain last week, the river rose and several of the swans' nests were flooded. This is a real shame although hopefully there is still time for them to lay again so we have some cygnets. I did see the first of this year's goslings on the river which is always a nice sight.

Litter pickers

One thing I have noticed this spring is that there are a number of people who are voluntarily going around the village litter picking. I think this is fantastic and it is making a difference. Thank you! It is just a shame people drop it faster than it can be picked up! Whilst on the subject of litter, I

would like to ask the people who pick up their dog's mess in a plastic bag then hang it on the nearest fence post or hedge not to bother, you might as well leave it, at least the dog mess will degrade, the plastic bag doesn't. Pick it up and take it home, the countryside is not a dustbin!

Farming wife duties at College Farm

I have been helping turn the cows out, which is always more challenging than it sounds as one always tries to run through the gaps on the way to the field. Thankfully, this year it went smoothly – they were all eager to start munching on the grass down the river meadows. They always run around in excitement at first and it is a lovely sight to see.

We also have a few cows in the yard, our youngest who are either still being fed milk or just waiting for the grass to grow more before they can join their friends. Hopefully this will be sooner than later. Our 3 year old daughter likes to help us feed them and they are all named after princesses.

In addition to helping on the farm, I have also launched new products with my art business, LJ Creative Studios. My latest products are a kids waterproof tractor apron and adult tractor apron. You can view and buy my products at ljcreativestudios.com and all locals can select free collection. I have also signed up to some events this year and cannot wait to show my products in the flesh once again.



My first was Bedford Craft Market and my next is at Jordan's Mill on Saturday 12th June from 10am. If you like the look of any products on my website and would like to see it before purchasing, then just drop me a line and this can be organised. I am following all COVID guidelines.

Let's hope for a lovely warm sunny summer with all the restrictions of the last 18 months lifted, so we can all see our friends and family, and normality can resume! Henry and Laura Saunders



Home based salon in Lincroft,
Oakley

Services include:

- Gel Polish Manicures
- Gel Polish Pedicures
- Classic Eyelash Extensions
- Lash Lifts and Tints
- Spray Tans
- Gift Cards
- Loyalty Scheme

With COVID secure procedures throughout, for more information or to book your treatment, follow me / contact me via:



Calm Beauty - Oakley



Calm_beauty_oakley



077389 67899



FAIRY GARDEN OPEN DAY

Sunday 1st August 2021

and

Sunday 8th August 2021

at

“Fox Covert” Westfield Road, Oakley

Entry Free

1.00pm to 4.00pm

Games, painting

Chalk drawing and Lucky dip

We have a large pond so children

must be supervised at all times



Emmaus Village Carlton – a Bedfordshire homelessness charity with a difference

Emmaus Village Carlton is a Bedfordshire charity based just outside of Carlton (15 minutes from Oakley). It provides a real workable alternative to homelessness, offering a home and support as well as meaningful work experience and training. People being supported by the charity (known as 'companions') live on site for as long as they need it to and are helped to move on when they are ready.



Like any flourishing community, Emmaus works because everyone makes a contribution. Companions, staff and volunteers all work together to help generate the funds needed to support the charity. All companions gain work experience and develop their skills by helping to run social enterprises: three charity shops and a bistro.

Impact of Covid-19

The charity estimates it will have lost around £200,000 of trading income due to the pandemic - valuable income that is needed to ensure they can continue their work. Emmaus Village Carlton is now reaching out to local people, asking for their support – needed now more than ever.

Help Emmaus: shop, eat, drink, donate

Set in the heart of the beautiful Bedfordshire countryside, Emmaus Village Carlton is a shopping village full of preloved items, with three large charity shops to explore plus a popular Bistro and attractive outdoor areas. It's a special place to visit and a great day out for the whole family.

The shops and bistro (on School Lane, Carlton, MK43 7LQ) are open Wednesday to Saturday 9.30am - 4.30pm and Sunday 10am - 4pm.

Shop

Visit the impressive Home Store to explore a wide range of quality, preloved furniture and homeware, across multiple rooms – including a toy department and upcycled creations. The Bric a Brac shop offers a wide range of music, books, games and homeware, whilst the Boutique at Emmaus Village Carlton is the perfect place to browse quality preloved clothing, shoes and accessories for all the family.



Eat & drink

Serving proper coffee, tasty breakfasts, delicious hot and cold lunches, as well as their famous cakes, em's Bistro at Emmaus Village Carlton is extremely popular.

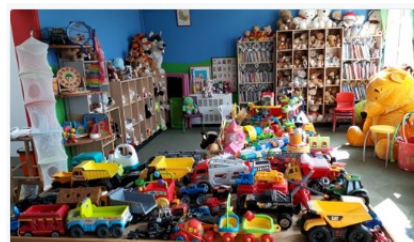
Donate

Emmaus Village Carlton runs a free collection service for unwanted quality furniture, within 20 miles of the site. Alternatively, you can drop-off items for any of the shops, by making a donation appointment. To book either of these services, please call 01234 720826.

Find out more: www.emmaus.org.uk/village-carlton

Twitter: @EmmausVC | Facebook: @Emmausvillagecarlton |

Instagram: @emmauscarlton





David Russell Bespoke Builders Ltd are an expert team of building contractors who faithfully serve Bedfordshire and surrounding area.

When you need professional and dependable building services in the Bedfordshire area, call David Russell Bespoke Builders.

We serve domestic and commercial clients and are dedicated to excellence, completing all of our projects to the highest possible standard.

TRUST DAVID RUSSELL BESPOKE BUILDERS

WITH YOUR DREAM PROJECT

WITH YEARS OF EXPERIENCE IN ALL AREAS OF TRADE, YOUR CONSTRUCTION PROJECT COULDN'T BE IN BETTER HANDS

Contact us on :

Email : info@davidrussellbuilders.co.uk

Telephone : 07982663383

Follow us on instagram @davidrussellbespokebuildersltd and on facebook @David Russell Bespoke Builders



NFB
National Federation of Builders



TICK TOCK

WHAT'S HAPPENED TO OUR CLOCK?

Many of you may be wondering why you have not been hearing the Church Clock chime on the hour and half hour over the past year - unfortunately, the clock has stopped running or to be more precise starts and then stops again!

Why? you might ask, so let me explain.

The Pendulum Clock situated in the church tower (pictured above) was installed in 1620; with its single hand the clock is unique and has been part of village life for over 400 years.



Over the years, very little maintenance has been required to the actual clock mechanism. For many years it simply required someone to go in twice a week and wind the weights up, to keep it ticking away and able to ring a single bell on the hour and half hour. Then in the 1980s an automatic winding mechanism was installed to avoid the need for manual winding of the clock weights. But it is this that is now causing problems.

A full inspection has been carried out by a qualified Horologist, which revealed that all the pivots, bearings, wheel teeth and interlocks are worn to such an extent the clock cannot function properly. The auto winding mechanism installed forty years ago has added considerably to the wear and tear as it is over heavy for what it is intended.

In order for this rare clock to tell the time and chime again a complete restoration of the movement needs to be undertaken and a new winding mechanism installed, which is not going to add wear and tear to the clock, so it can survive another 400 years.

If we as a village wish this unique timepiece to become part of our lives again we need to find in the region of £11,000 to carry out its restoration. St Mary's is applying for grants and has already received one, with more applications awaiting decisions. We have also begun to receive some donations towards the project – but more are needed!

For further information, or to make a donation, please do not hesitate to contact me (ls.ball@btinternet.com).

Sally Ball – Treasurer, Oakley PCC

Phantom Sprayer

Well, summer is about to arrive, we hope, and lovely dog walks in the country. With the reduction of lockdown rules and regulations there will be more exciting walks that we can visit.

Please remember to always pick up and properly dispose of your dogs' droppings. Also remember that we are blessed with this lovely countryside but the farmer's crops are also their livelihood. So please make sure your dog does not run into those crops as they can cause an enormous amount of damage.

The other thing to remember is to please do not drop your litter. Take that home as well or dispose in a rubbish bin as soon as you find one.

We have had an issue with the Bedford Borough missing out on emptying some of our rubbish bins, which they tell us are emptied on Black Bin week, so every two weeks. I am now checking on the bins after every emptying to make sure it is done, and reporting if they have been missed. If the bins are emptied regularly at the correct time, although they do get full, they do not overflow as we have been seeing recently.



**DOG FOULING
CLEAN IT UP**

*Bring your
garden
to life!*



OAKLEY
BUILDING & LANDSCAPES



Artificial Grass | Building & Landscaping
Driveways, Paths & Patios
Timber & Composite Decking

📞 01234 915049 ✉ info@oakley-landscapes.co.uk
📱 07803 749340 🌐 www.oakley-landscapes.co.uk

Oakley Pre-school News



As many of you know, Oakley Pre-school has been running in the village for over 50 years. We are a private voluntary independent (PVI) pre-school and a registered charity and are currently based in the Methodist Church Hall.

We serve the local community in Oakley, and in wider Bedfordshire, by providing early years' education to children from the term after they turn two years old until they go to primary school. We are open five days a week from 9.15am-3.30pm and this enables parents to access quality childcare and to give their children the opportunities to interact and learn with others of a similar age. We provide employment for seven staff members, who are all part of the local north Beds community.

We believe our pre-school is an invaluable local service, rated 'Outstanding' by Ofsted, which adds character to Oakley and makes the village more attractive to young families when considering making Oakley their home.

We have been working, for some time, on plans for a new, bigger premises located in the heart of the village. Patrick Knight kindly offered part of the paddock, behind the current pre-school premises, to house the new pre-school. Patrick is passionate about education and nature and we look forward to working with him and the charity 'Bug Life' to design our eco-friendly outside environment.

Our new building will include a purpose-built indoor area, with a separate room for our two year olds. Our outdoor space, with accessible access and a Forest School area will enhance children's experiences within the natural world. With space for up to 40 children, the newbuilding will ensure we can continue supporting the community of Oakley for decades to come.

We would like to publicly thank the local compa-

nies, who came forward when we previously asked for donations in September 2019. These included EMC Design, Z &M Roofing, Bedfordia Farms and Santander UK. We have also received almost 30 donations from local residents and pre-school parents, both past and present. We will contact you shortly to arrange a named brick for you.

To date, we have secured just under £370,000 through grant applications and since 2012, when we embarked on our journey of improving the pre-school premises, all our fund raising events have been held in order to ensure that this project comes to fruition.

Due to the Covid-19 Pandemic and Brexit the project has been delayed several times and the final cost has escalated. The groundworks have now started and we are very excited that the project is finally underway!

We do still need to raise more funds and are continuing to search out and apply for grants.

How you can help

We have now started taking orders for our Name a Brick Appeal, where you can record your involvement with pre-school by purchasing a brick that will be permanently displayed on the interior wall of the new entrance hall. Please see the Oakley Pre-school Name a Brick Appeal on the 'New Build' page of our website for an order form. <https://www.oakleypreschool.com/new-build>

We will happily meet with you to discuss further any donation, or any other help you can offer. Please contact the pre-school on the telephone number or email address below.

Admissions

If you would like to register your child for a place at pre-school, please contact us on 01234 826452 or by email: info@oakleypreschool.com Our website is: www.oakleypreschool.com

Follow us on Facebook to keep up with our latest news and events.

For information on funding you can contact the Family Information Service 0800 023 2057

Sally Martiello





Oakley Pre-school Name a Brick Appeal Order Form

Your Name &
Message Here

I would like to purchase/name the following bricks and enclose a donation of *cash / confirm BACS transfer (Oakley Pre-school, 60-02-13 80927661) of the total paid below.

	Quantity	Cost	Total Paid
Single sized brick @ £35 each	<input style="width: 50px; height: 25px;" type="text"/>	<input style="width: 50px; height: 25px;" type="text"/>	<input style="width: 100%; height: 40px;" type="text"/>
Double sized brick @ £70 each	<input style="width: 50px; height: 25px;" type="text"/>	<input style="width: 50px; height: 25px;" type="text"/>	

Name:

Address:

Post Code:

Contact No: Email Address:

Name(s) to appear on brick/s (2 lines (single brick) or 4 lines (double brick), maximum of 16 characters per line, punctuation and spaces count as characters)

Single Sized Brick 1:

Single Sized Brick 2:

Double Sized Brick:

Gift Aid Declaration

I confirm that I am liable to pay income tax or capital gains tax at least equal to that which Oakley Pre-school will reclaim on this gift. I will notify Oakley Preschool if I change my address.

Signature: Date:

Once completed please return form with monies to: Oakley Pre-school by 30th November 2021

- *Please circle appropriate payment method*



Our award-winning theatre is re-opening!

We are delighted to return with a new season of shows, strictly in-line with Government guidelines.

www.sharnbrookmilltheatre.co.uk/covid



SHARNBROOK MILL THEATRE presents Cytrigan Players

Men of the World
by John Godber

Contains adult material

SHARNBROOK MILL THEATRE
1st - 3rd July 2021 at 7.30pm

Tickets available online from
www.sharnbrookmilltheatre.co.uk

Affiliated to the National Operatic and Dramatic Association

Larry, Stick and Frank, three coach drivers, share their experiences of passengers on previous trips to exotic locations, such as Folkestone, and getting stuck in The Channel Tunnel for hours. The affection, frustration and black humour in their observations emphasises that you can take the lad out of Yorkshire, but not Yorkshire out of t'lad. Touching, often hilarious bitter-sweet play with adult material.

TICKETS £10

(Groups: 10+ 10% discount) + £1 booking fee,
www.sharnbrookmilltheatre.co.uk/tickets

Also, Pick-a-lily, Florist, Sharnbrook; in person only



Wheelchair spaces available:
please call 01234 781372



**YOUTH THEATRE
SUMMER
SCHOOL**
at the Mill Theatre

**ONE-DAY WORKSHOPS
FOR AGES 6 - 18
INCLUDING
PERFORMANCE SHOWCASE**

TUESDAY, 27TH JULY
AGES 6-9

WEDNESDAY, 28TH JULY
AGES 10-12

THURSDAY, 29TH JULY
AGES 13-15

FRIDAY, 30TH JULY
AGES 16-18

27TH-30TH JULY - 9AM TO 3.30PM, SHOWCASE AT 4PM / £35 PER STUDENT
WWW.SHARNBROOKMILLTHEATRE.CO.UK/SUMMERSCHOOL

www.sharnbrookmilltheatre.co.uk

From Snacks to Meals!

Cakes to die for
Best coffee in the neighbourhood
Milkshakes, tea, soft drinks
Open SEVEN Days!
Friendly staff, good service



for Coffee

Oakley's Coffee Shop!

Phone 824113- info@o-for-coffee.co.uk
<http://www.o-for-coffee.co.uk>
Oakley Park (Unit 1), Station Road, Oakley!



Tudor Rose Patchwork

Oakley's Sewing and Threadcraft Shop

Phone 824983 - info@tudorrosepatchwork.co.uk
<http://www.tudorrosepatchwork.co.uk>
Oakley Park (Unit 1), Station Road, Oakley!

We're friendly and very helpful!
We run all kinds of workshops and clubs!
We have a great selection of knitting yarns
We have a huge range of cotton fabrics
as well as other types of fabric

AMIGO

I am pleased to say that I have begun to make arrangements for Amigo beginning in September. Full details will appear later, but for now I am setting out what is proposed so that you may make a note in your diaries:-

28th September 2021 - By the kind invitation of Pat Olney we are invited to a party in her garden from 5.30 p.m. Light refreshments and drinks will be available. Please let John Dixon know by the 14th September if you wish to come. John's telephone number is 01234 824959 and his e-mail address is jwdixon30@gmail.com.

26th October 2021 - A talk by Nick Cooke on the activities of the code-breakers at Bletchley Park. 7.00 p.m. at Oakley Methodist Church

23rd November 2021 - A visit to the Planetarium and Telescope at Bedford School

14th December 2021 - Carol Singing at The Bedford Arms, Oakley from 8.00 p.m.

25th January 2022 - A film show at Oakley Methodist Church from 7.00 p.m. The film will be "The Personal History of David Copperfield."

22nd February 2022 - A light hearted Quiz hosted by Sue Brecknock beginning at 7.30 p.m. at Oakley Methodist Church.

I am pleased to say that Charlie de Wet has agreed to lead us on another London Walk on Thursday 23rd June 2022

It is also proposed to arrange a talk by the Bedford Historian, David Fowler and a guided visit to "Linch Furlong" led by Patrick Knight as well as an evening ramble. As you will appreciate, I am assuming that by the time the proposed events are due to be held, the present restrictions due to the pandemic will be eased.

I will keep you informed of further developments. Further details of each event will appear in the Churches Together Newsletters nearer the date and in the September issue of the Parish News.



John Dixon

Strategic Planning Issues – Part 2

East West Rail Consultation on Routes Through North Bedfordshire Ends Soon

Have your Say

The Parish Council wrote to all residents regarding Strategic Planning Issues in January

East West Rail is now consulting on the section of the train line from Oxford to Cambridge which affects Bedford and the North Bedfordshire villages. There are five route options which are shown on the map below.

All of the options will necessitate

Moving Bedford Midland Mainline Station

Moving St. John's Station

Demolishing houses in the Poets Area of Bedford, off Shakespeare Road

Altering Ford End Road and Bromham Road bridges again

Raising the Great Ouse Way so the line can pass underneath it

Building a single viaduct over the River Great Ouse, A6 and Clapham Road



Oakley Parish Council is very concerned about the impact on residents in Bedford and the North Bedfordshire villages, in particular

The environmental damage to the countryside and Great Ouse Valley

The long term noise impact, especially from freight trains which could run day and night

The visual impact of a massive viaduct approximately 15m high – more than three double decker buses

Large New Towns proposed in countryside around Twinwoods/Clapham/Milton Ernest/Bletsoe and Sharnbrook/Colworth as justification for the choice of route

Disruption over prolonged period during construction affecting major routes into and around Bedford

The Council supports better rail connections between Oxford and Cambridge but prefers a route to the south of Bedford. A southern route, based on a Parkway Station at Wixams - Route B and not considered in this consultation by East West Rail, would be shorter, flatter and straighter and pass through an area that is already developed for commercial activity. A southern route would also reduce the impact on unspoilt countryside, use fewer materials to construct, be a lower cost option and would also avoid bringing yet more traffic into the highly congested areas leading into and around Bedford station.

The full Parish Council response is on our website – www.oakleyvillage.co.uk and notice boards.

There is also information on the BFARE website – www.bfare.org.uk and the CPRE Bedfordshire website – www.cprebeds.org.uk

The consultation ends on 9th June and we urge you to submit a response to East West Rail. The Parish Council will be pressing East West Rail to reconsider the southern route B.

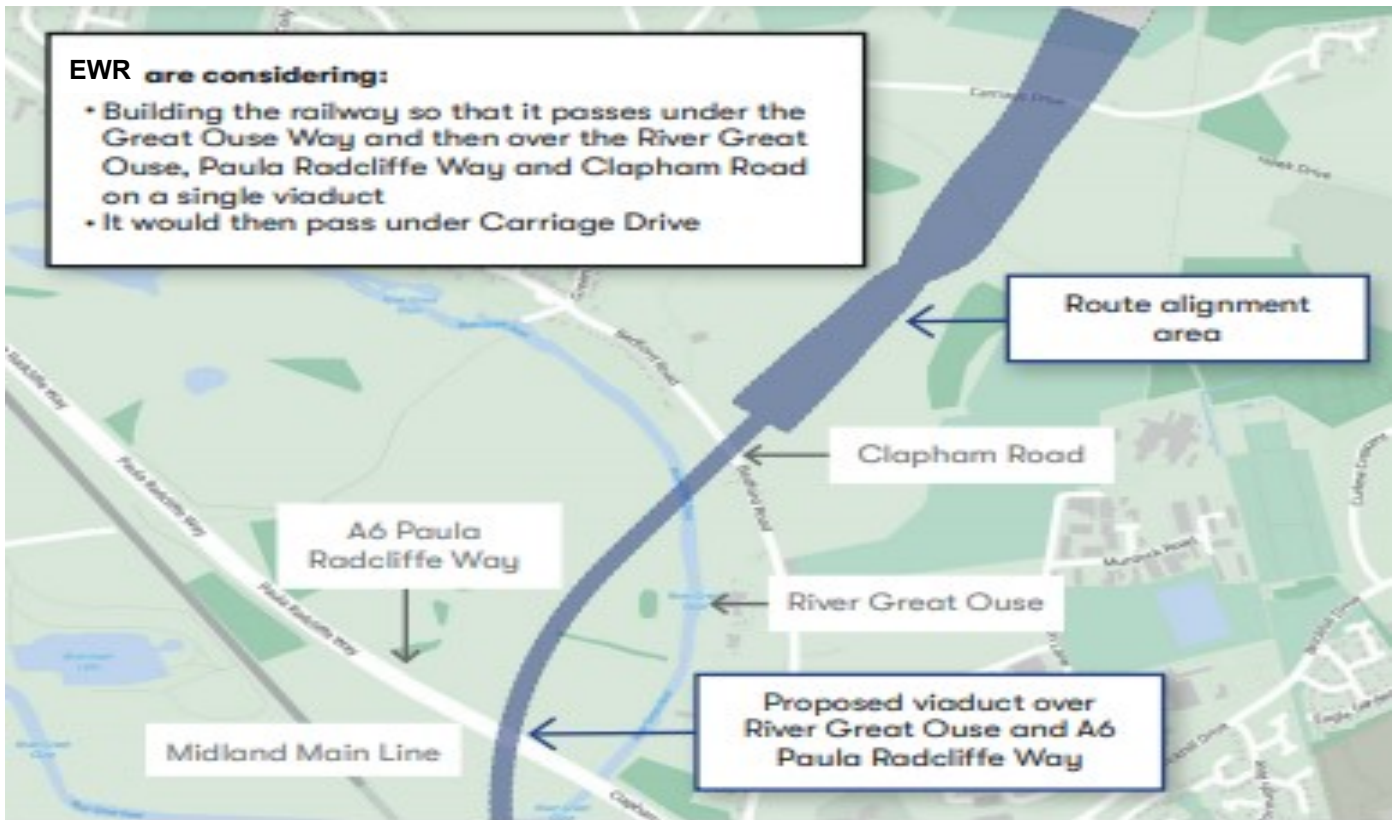
The full consultation document, more detailed information (including interactive maps) and a response form are on the East West Rail website – www.eastwestrail.co.uk/consultation

If you do not want to use the online form you can respond:

by writing to FREEPOST, EAST WEST RAIL

by email to consultation@eastwestrail.co.uk or by phone on 0330 1340067





OAKLEY ANNUAL PARISH MEETING 2021

Minutes of meeting held virtually on 6th April 2021.

PRESENT:

Cllr Phillips (Chair), 8 Parish Councillors, the Clerk to the Parish Council and 1 member of the public.

1. Apologies: Cllrs. Saunders & White

2. Minutes of Annual Parish Meeting held on 12th May 2020:

Copies of the minutes of the last meeting had been circulated and there were no matters arising.

3. Scheme to Improve Biodiversity in Brockwell Meadow

Following the success of the work to improve biodiversity in Linch Furlong and the Riverside Meadow, Council has agreed to extend the scheme to Brockwell Meadow. The meadow is currently just mown grass with little environmental value and Council would like to turn it into a more environmentally friendly green space. A possible scheme has been prepared and Council was hoping to discuss it with residents last Summer. However, due to Covid this has had to be delayed and we now hope to hold a site meeting this Summer.

The draft scheme includes planting wildflower areas and shrubs or trees, just mowing paths around and through the site and a marshy area. An access will be made to the new Pre-School to encourage the children's interest in the environment and conservation. Grey water from the new Pre-School roof could also be used for the wet area. Once a scheme is agreed with residents the same specialist contractor, who manages Linch Furlong and Riverside Meadow will manage the site and we hope that we can begin planting in the Autumn.

Chair commented that it was an exciting project which would add another environmental asset to the village.

4. Impact of Major Infrastructure Schemes – East West Rail (EWR) and Oxford-Cambridge Arc (Ox-Cam Arc)

Cllr. Sansom made a presentation detailing the issues around the Ox-Cam Arc, EWR and the Borough Local Plan review.

In early 2021 Council had distributed a leaflet to every household to inform residents about these developments. In May 2019, Bedford BC was party to an agreement supporting the Ox-Cam Arc called the Joint Declaration. This would result in the urbanisation of the open countryside between Oxford and Cambridge, the building of 1 million new homes and a population increase of around 1.9 million, which was equivalent 20 cities the size of Cambridge.

EWR finally published details of their preferred route between Bedford and Cambridge in 2020 and the northern Route E was chosen. This was supported by Bedford BC as it could facilitate a new town or towns in North Bedfordshire but their response to the consultation was not published on their website until recently, so residents were largely unaware of their views. Council preferred Route B to the south of Bedford, which would follow the existing transport corridor along the A421 and include a parkway station at Wixams. Route B was preferred by the Wildlife Trust and Routes B and E were equally popular in the EWR consultation.

The Bedford Borough Local Plan 2030 was currently being reviewed and a Call for Sites had been undertaken. The review would incorporate the Ox-Cam Arc proposals and the EWR preferred route and new housing would be in addition to the 500 houses already allocated in each of Bromham, Clapham, Great Barford and Sharnbrook. Cllr. Sansom tabled maps showing the large sites of 6K – 10K homes put forward around Twinwood Business Park and of 4.5K homes around Colworth. Either site would have a severe impact on Oakley because of the additional traffic and the promoters of the Twinwood site had also included a parkway station to the north of Bedford in their proposal.

In response to these issues, Council had invited the Mayor and Mr. Fuller MP to a public meeting and raised our concerns with them. Council had also joined two action groups, BFARe (Bedford for a Re-consultation) and KNBG (Keep North Bedfordshire Green). Both groups had held meetings with Mr. Fuller MP and the Minister for Railways and BFARe had organised a petition to Bedford BC signed by almost 2K residents. Brickhill Parish Council held a special meeting because of the concerns of local residents and subsequently rescinded their support for Route E. An action group to protect the Great Ouse Valley had also recently been formed because of deep concerns about the impact of future development on the river area.

EWR consultation on options for the line within Route would run from 31.03.21. until 09.06.21. Cllrs. Sansom & Olney had attended the briefing on the consultation for which EWR gave only 24 hours' notice. Council would be responding and would continue to work with pressure groups to protect the local countryside.

Cllr. Sansom confirmed that BFARe and KNBG were working together. Cllr. Fardon asked whether Cllr. Abbott had a conflict of interest as a Bedford Borough Councillor, given that the views of Oakley residents differed from those of Bedford BC. Cllr. Abbott confirmed that he fed back the views of all three of the parishes in his Ward to the Borough Council but personally he supported Route E because of the economic benefits it would bring to the Borough. He would ensure that the Borough was aware of Oakley's opposition to Route E and would represent the views of all his parishes.

Continued:-



OAKLEY ANNUAL PARISH MEETING 2021 - Continued

He noted that a recording was available of the Full Council meeting 17.03.21. where questions were asked and answered about Route E. He added that a route to the south of Bedford would impact the countryside there, would increase journey times to the station if it was located at Wixams and would affect the RSPB at Sandy. Decisions were being made by the Government and Bedford BC did not exert as much influence as some believed. Cllr. Sansom commented that Route B would not affect the RSPB site. All agreed that it was important that as much information as possible was available to residents.

Chair thanked Cllr. Sansom and commented that it was disappointing that more members of the public had not attended to hear the presentation.

5. Communication and Engagement with Residents

Chair commented that councillors all felt strongly about maintaining good communications with residents. Council had effective means of engaging through agendas and minutes, the Newsletter and the website and Facebook page. Use of online communications was increasing, including recording this meeting and discussion tonight indicated that Council considered it an important issue. The flyer distributed at the beginning of the year was an example of how Council would take additional steps as needed to keep residents informed but Council was open to other ideas for communicating if residents had any suggestions.

6. Report of the Parish Council:

a) Chairman's Report

No-one really needs reminding what an unusual 12 months we have had. For the whole year our meetings have taken place virtually and from our experience it has been 'business as usual': we follow the same procedures and the public are provided with access details and those who do join us I would like to think are made very welcome.

At this early stage in my report I would like to thank Ann Paice, our Clerk, for her constant hard work dealing with all put before her. My thanks also to fellow Councillors for all they do for Oakley. The time that Councillors commit to Council business should never be underestimated which of course includes day to day business, plus additional demands such as the Neighbourhood Development Plan and our valued Village Directory to name but two. Thanks also to Bill Chalker, our Newsletter Editor who continues to do a sterling job and our litter picker who turns out in all sorts of weather to pick up 'our' litter. A number of residents who have volunteered are also worthy of thanks for their contributions such as litter picking, dealing with dumped dog poo bags, filling in tyre marks on grass verges, monitoring vehicle movements and delivery of publications, plus all those other tasks that go unnoticed. We would be in a sorry old state without the help of volunteers and to each and everyone of you thank you very much.

The year seems to have been a busy one with many of the usual subjects arising such as litter bins, play equipment inspections and repairs and highways matters, which include parking matters and the new 'no verge parking scheme.' We adopted a Tree Policy and considered crime, police matters and speed watch, which includes the effectiveness of the average speed cameras. From the regular figures we receive it is clear that the cameras are having a positive effect on speed and safety.

In April our Neighbourhood Development Plan became a Statutory Planning Document and in May we marked VE Day appropriately on the 8th and then three months later on 15th August we marked VJ Day, but sadly the weather was not particularly kind to us. In November Remembrance Sunday was respected, but in a much lower key way than normal. A Ceremony took place at the Memorial, with a small and respectful presence.

The Council took the decision, with considerable regret to remove the bottle bank from the rear of the Village Hall and not relocate it. During its time there it had been misused and abused. Its removal was necessary albeit unpopular with some, but very little was said when we publicly asked for help in trying to find an alternative site. Not long after its removal, the Borough Council sited a bottle bank on their land at the entrance to the Stevington Walk in the Parish of Bromham: it will be there for a trial period during which time its use will be monitored.

We are very proud of our open spaces particularly Linch Furlong, The Community Orchard and Riverside Meadow and with the guidance of Patrick Knight a couple of summertime walks took place when Patrick was able to share his vast knowledge. We are very conscious of the need to improve biodiversity and much planning has taken place this year so that later this month we will be sharing ideas with near residents on what can be achieved at Brockwell Meadow.

During a normal year we receive many consultation documents, but this year we seem to have had more and of considerable importance, three of which were the Oxford/Cambridge arc East West Rail route and Bedford Borough Plan 2030 Review. Because of the importance of these matters we felt a need to inform residents with a separate flyer, hoping that residents will familiarise themselves and comment appropriately. Whilst we cannot stand in the way of progress, we have to think about what is right for our village. The Mayor Dave Hodgson and Richard Fuller MP joined us at separate meetings when we were able to discuss these and other matters. Their attendance was well received and we will do the same again as and when the need arises. The way we communicate with residents is constantly on our minds and we will listen to any ideas on how we can improve our lines of communication to all. Everyone has a right to hear and be heard and we will continue to do our best to bring matters to attention by means of our meeting agendas and minutes, the village web site, The Parish Council Facebook Page, the quarterly Newsletter and delivery of flyers when required.

One of the last decisions we made was giving approval for the 6 to 8 year old football teams of AFC Oakley to train on the Village Green until the end of June if there are no other facilities available. The football club must inform residents and there must be strict compliance with Covid and parking regulations to minimise disruption to nearby residents.

Thank you for listening and thank you for your support.

b) Parish Precept 2021/22:

The precept for this year has been set at £54,700 and the band D rate has increased by 1.9% from £55.68 to £56.73 p.a.

OAKLEY ANNUAL PARISH MEETING 2021 - Continued

c) **Draft Accounts for 2020/2021:**

In 2020/21 income amounted to £76,430.41 and expenditure to £77,100.33. Income decreased by approximately £59,994.23 largely because Bedford BC paid double the amount of precept of £52,800 in error in 2019/20. VAT receipts decreased by £5,947 because of a reduction in capital expenditure in 2019/20 (£39,166 was spent on new play equipment in 2018/19 and the VAT reclaimed in 2019/20) and Community Infrastructure Levy income reduced from £5,317 in 2019/20 to none in 2020/21. This was offset by an increase of £1,205 in glass recycling receipts as a result of lockdowns during the Covid pandemic and additional allotment income of £1,201 largely because of the Ward Fund grant of £1,125 for work to clear the ditch.

Expenditure decreased by approximately £67,822 again mostly due to the double payment of the precept of £52,800 by Bedford Borough Council in 2019/20. In addition, there was no spending on the Neighbourhood Plan, now it has been completed, compared to £5,395 in 2019/20, capital expenditure reduced by £8,273 largely due to the cost of the bollards at the Green and Grange Green in 2019/20, the VAT refund due on expenditure in 2020/21 reduced by £3,078 and the cost of grass cutting by £3,961 and the Christmas lights by £2,180 with the appointment of new contractors. This was offset by an increase of £4,245 in the cost of tree works, an additional £1,329 spent on the allotments and an additional £810 spent in Linch Furlong largely on a new information board. Donations totalling £7,000 were made to the Pre-School, the Village Hall, the Youth Club, Autism Bedford, Transitions UK and the RBL for a poppy wreath.

d) **Planning**

During 2020/21 the Parish Council was consulted on and commented on a total of 47 planning and related applications, compared to 49 in 2019/20. Most were for relatively minor works but Council objected to 6 applications on the grounds of impact on neighbours, overdevelopment, impact on the character of the local area and dangerous access. As a general policy Council asked for trees not to be removed unless they could not be saved and, if they had to be felled, for replacements to be planted in their place.

Council objected to the proposals for development on land off Pavenham Road on the grounds that it would not comply with the Borough Local Plan 2030 or the Oakley Neighbourhood Plan as it was outside the Settlement Policy Area and the site was not included in our Neighbourhood Plan. Council was also consulted as a neighbour on the application for 500 houses off Milton Road, Clapham and objected on the grounds that the Borough does not need 500 houses in each of Bromham, Clapham, Great Barford and Sharnbrook.

The Pavenham Road application was refused by the Borough but the applicant has appealed. Council has reiterated their objection and we await the outcome of the appeal. The Clapham application has yet to be decided by the Borough Council. Council has also continued to object to the resin parapets on the Highfield Road bridge as they are completely out of keeping with the surrounding area and again, we are awaiting a decision from the Borough Council.

Last Autumn, the Government consulted on a Planning White Paper which would zone land into Growth, Renewal and Protected areas (with automatic outline permission being given for Growth land), would impose centrally set housing targets, create local plans that would allocate sites but not set local policies and introduce a new National Model Design Code with a fast track for "beauty." Council was very concerned and had commented that zoning would open all greenfield sites up for development and there would be no protection for the Great Ouse river valley. It would take decision making out of local hands and residents should be involved in decisions on sites and development schemes. The role of Neighbourhood Plans would also be reduced. A standard housing calculation was insufficiently flexible to take account of individual local authority needs and a central design body should not just focus on beauty but also place making and character of the area. Following a backlash from MPs the standard housing calculation has been revised and it was not yet clear what the Planning Bill, due later this year, will contain.

Neighbourhood Development Plan (NDP):

Cllr. Olney reported that the Plan was "made" on 02.04.21. and was now a statutory planning document. All Oakley planning applications would therefore need to conform to the policies within it. The Parish Council had asked the NDP Group to continue its work to monitor and review the NDP. The Group had also made representations to Bedford BC about the new Local Plan 2040. Bedford BC was currently assessing the land put forward in the Call for Sites but most of the policies in the Local Plan 2030 would be carried forward into the new Plan. The draft Local Plan 2040 would be considered by the June Borough Executive Meeting and was expected to be issued for consultation later that month until September. Bedford BC was also revising their Landscape Character Assessment and it had been suggested that the Ouse Valley, particularly the section between Oakley and Sharnbrook, should be designated as an important nature corridor in the Local Nature Recovery Strategies to be introduced in the Environment Bill. Concerned residents in Stevington had contacted Cllr. Olney and a group had been formed to preserve and enhance the Ouse Valley. An initial meeting had taken place and the Group would be formally constituted and would then contact landowners and parish councils in the area.

No planning applications had yet been put forward for the development sites in Oakley but Council and the NDP Group had asked to be included by Bedford BC at an early stage in discussions about the sites. Both Council and the NDP Group had objected to the application for 20 houses off Pavenham Road. This had been refused by Bedford BC but the applicant had appealed and the appeal had yet to be decided.

The NDP Group would continue to monitor and make representations on planning applications as appropriate, input into the Local Plan 2040 and work to enhance the Ouse Valley. Cllr. Olney thanked the members of the Group for their ongoing efforts and the Clerk for her support. Chair thanked the NDP Group on behalf of Council.

7. Questions from the Floor: There were no questions so Chair thanked everyone for attending and closed the meeting.

2020/21 Parish Council Accounts



In 2020/21 income amounted to £76,430.41 and expenditure to £77,100.33. Income decreased by approximately £59,994.23 largely because Bedford BC paid double the amount of precept of £52,800 in error in 2019/20. VAT receipts decreased by £5,947 because of a reduction in capital expenditure in 2019/20 (£39,166 was spent on new play equipment in 2018/19 and the VAT reclaimed in 2019/20) and Community Infrastructure Levy income reduced from £5,317 in 2019/20 to none in 2020/21.

This was offset by an increase of £1,205 in glass recycling receipts as a result of lockdowns during the Covid pandemic and additional allotment income of £1,201 largely because of the Ward Fund grant of £1,125 for work to clear the ditch.

Expenditure decreased by approximately £67,822 again mostly due to the double payment of the precept of £52,800 by Bedford Borough Council in 2019/20. In addition, there was no spending on the Neighbourhood Plan, now it has been completed, compared to £5,395 in 2019/20, capital expenditure reduced by £8,273 largely due to the cost of the bollards at the Green and Grange Green in 2019/20, the VAT refund due on expenditure in 2020/21 reduced by £3,078 and the cost of grass cutting by £3,961 and the Christmas lights by £2,180 with the appointment of new contractors.

This was offset by an increase of £4,245 in the cost of tree works, an additional £1,329 spent on the allotments and an additional £810 spent in Linch Furlong largely on a new information board. Donations totalling £7,000 were made to the Pre-School, the Village Hall, the Youth Club, Autism Bedford, Transitions UK and the RBL for a poppy wreath.

Ann Paice, Parish Clerk

OAKLEY PARISH COUNCIL

Summary of Accounts - Financial Year ending 31 March 2021

Opening Bank Balances	
NatWest Bank current balance at 31/03/20	£6,362.88
NatWest Bank reserve balance at 31/03/20	£17,249.06
Nationwide investment bond 31/03/20	£59,495.74
Hampshire Bank investment bond	£82,421.90
less uncleared payments	£236.00
Total cash in hand	£165,293.58

Receipts	
	£
Precept	£54,400.00
Agency Services (Grasscutting - Bedford BC)	£1,200.00
Allotments (rent & Ward Fund grant)	£2,226.00
Community Infrastructure Levy	£0.00
Donations (seat installation and tree water bags)	£159.00
Glass cullet sale from Bottlebank	£2,849.28
Grants	£0.00
Interest (including £1577.52 from bonds which reinvested)	£1,584.41
Newsletter & Directory advertisements and sponsorship	£5,540.00
VAT recovered from 2019/20	£8,423.78
Zoom hosting	£47.94
Sub total	£76,430.41

Payments	
	£
Administration (includes subscriptions)	£3,628.45
Insurance	£2,017.92
Grass Cutting	£7,259.65
Grounds Maintenance (includes tree works)	£6,995.00
Wages, Tax, National Insurance, Pension	£21,359.42
S. 137 Payments (grants to local organisations)	£7,000.00
Capital Spending (traffic count device, laptop and litter bin)	£2,421.31
Cricket Field & Riverside (rent)	£837.11
Allotments	£1,940.34
Bottlebank	£1,720.00
Bus shelters	£0.00
Community Orchard	£0.00
Christmas lights	£2,820.00
Linch Furlong	£1,510.00
Neighbourhood Plan	£0.00
Play area (inspections & repairs)	£5,220.50
Publicity (Newsletter, Directory, Website)	£6,825.00
VAT refund due on above payments	£5,345.63
War Memorial	£200.00
Sub total	£77,100.33

Closing Bank Balances	
NatWest Bank current balance at 31/03/21	£13,872.55
NatWest Bank reserve balance at 31/03/21	£7,255.95
Nationwide investment bond 31/03/21	£59,746.27
Hampshire Bank investment bond	£83,748.89
less uncleared payments	£0.00
Total cash in hand	£164,623.66
Total	£241,723.99

Total	£241,723.99
--------------	--------------------

£99,800 plus £19,220 interest of the total cash in hand figure is ring fenced for maintenance of The Furlong, the Grange & Parsonage Close open spaces and £3,259.90 for maintenance of the High Street bus shelter.

R J GASCOYNE

THE PLUMBING, HEATING AND GAS COMPANY

Boiler changes, system upgrades, bathrooms, fault finding, servicing, maintenance, gas safety & landlord certificates, repairs, all heating, plumbing, drainage and gas work undertaken.

All from a friendly, reliable, trustworthy and professional engineer.

Contact Ryan on

TEL: 07980 209587

or EMAIL: ryangascoynephg@gmail.com



Uncomfortable with letting strange people into your home?

We are an **all-female** team of interior painters and decorators, working in the north beds village area. Fully experienced in hanging wallpaper, painting – including paint effects, restoring and repairing surfaces, wallpaper stripping and all general home decorating. We are all individually CRB checked, will provide references and testimonials showing the standard of our workmanship giving you peace of mind. We will come to your home to discuss your exact requirement, offer advice and produce a free written specification and quotation. We will then arrive on time, keeping disturbance to the minimum and deliver a quality job using only top quality materials.



OAKLEY ANGELS
The all-female painting and decorating team

- Trustworthy
- Experienced
- Guaranteed work
- Peace of mind
- High quality work at a reasonable price

Phone: 07989 778345
or: 01234 822499

Linch Furlong Diary by Pat Olney

My favourite walk is Linch Furlong and along the river and around the field to Highfield Road. Morse, my Patterdale terrier, loves it too but sometimes he likes to go along beside the railway. Yesterday was lovely and sunny and I heard the skylark for the first time.



In February to my delight, I saw the violets not only in their usual spot but all over the field at Linch Furlong. There were also catkins adorning some of the bushes.

March saw the sloe bushes in flower so I am looking forward to making sloe gin in the autumn. The violets continued to bloom.

April was very dry, but the flowers kept coming. There were flowers on the ash tree and white dead-nettle flowers. I so love these that I allow them to flower in my garden. Ground ivy I do not allow to grow in my own garden but enjoy the flowers in the field. The emerging cowslips started to poke through the ground with many across the field.

May has been a wet month; what happened to each month's weather? However, the flowers are a delight this month. The Crab Apple flowers were stunning this year. I hope the apples stay on as I am looking forward to making crab apple jelly in October, delicious with meat. Cowslips were a delight and all over the field. I met Mary and she said she was coming to sex the cowslips. Evidently male and female flowers are a different shape. There are dandelions, buttercups, purple vetch, daisies, more ground ivy and dead nettle. Queen Anne's Lace flowers have just started as have bachelor's buttons, a lovely blue flower that looks like buttons. The other flower, which I do not know, has a pea flower on a thin stalk and is not very tall but very pretty. The Pussy Willow has catkins and there are rowan flowers and hawthorn flowers. Now the May is in bloom, hopefully that means there should be no more frosts.

In June look for yellow and purple vetch, dog daisies and bee and pyramid orchids. Please enjoy the flowers, the bird song and, if June is sunny, some butterflies. Unfortunately, I do not know the names of the variety of grasses but Patrick Knight who has made this lovely nature reserve does.

A little History; the Parish Council took on the field on a 99 year lease and a group was formed to try to turn into a nature reserve. Many people planted trees and did hedging. We are very fortunate in having Pat Knight who lives in the village, who has managed a wildlife park and has a great deal of knowledge about all types of wild life. He is managing Linch Furlong for the Parish Council and he has made it the delightful place it is today.

Almond Garage Doors Ltd



- Servicing Bedford & Milton Keynes
- Spare Parts (including obsolete makes)
- Existing Doors Automated
- EMERGENCY Call Out Service
- New Sales & Installations (Free Quotations)



01234 828953

info@almondgd.co.uk

Fax: 01234 826024

College Farm, Oakley, Beds, MK43 7RX

www.almondgaragedoors.co.uk

Oakley Rural Day Centre

Oakley Rural, The Old School, Lovell Road, Oakley, Beds, MK43 7RX

Tel: 01234 824935 Mobile: 07733 227374

Email: oakleyruraldaycentre@yahoo.com

Web: www.oakleyruraldaycentre.weebly.com

Registered Charity No: 1060283



NEWSLETTER SUMMER

Welcome to our latest Newsletter. If anyone has access to the internet please visit our website, www.oakleyruraldaycentre.weebly.com The site is updated regularly with the latest news from the centre.

We also have a Facebook page for anyone who has a Facebook account. This will be updated with the latest news and photographs of events at the centre. The Facebook page can be found at www.facebook.com/oakleyruraldaycentre We are also producing articles in various publications throughout Bedford and surrounding areas to raise the profile of the centre.

DAY CENTRE NEWS

It is hoped our day centre will reopen on Tuesday 6th of July. This is dependent on government guidance and the planned roadmap out of lockdown goes to schedule. We will keep everyone updated through our facebook page and website, links at the top of this newsletter.

Each week we ring all the clients and volunteers on their usual attendance days and have also added extra calls for the more isolated clients. We check that they are all ok health wise, have no immediate problems, managing with their shopping and collection of prescriptions etc and pass on helpful telephone numbers or advice should they need it.

We send out a weekly two page newsletter and try to ensure that it is both interesting and topical. We also send out quizzes, crosswords, word searches, spot the difference and various things to stimulate the mind. The clients are enjoying them very much (some are even being passed on to friends).



We look forward to the future and talk positively about what we will be doing when the day centre reopens. The clients are missing their companions and very often ask for messages to be passed onto their friends.

The clients tell me how they look forward to their weekly telephone calls as it helps relieve the boredom and the terrible sense of isolation that a lot of them are feeling.

AGE UK BOOKLET

Under the news section on our website, www.oakleyruraldaycentre.weebly.com you will find a download for a booklet from Age UK which has all kinds of useful information. If you can't access it maybe a carer or family member can help.

WHAT WE OFFER

We normally provide a day centre for elderly residents from Bedford and surrounding villages to meet, socialise and partake in various activities such as crafts, quizzes, chair based exercise and at times provide entertainment such as singers and choirs. We also provide tea/coffee and a 2 course freshly cooked lunch.

For details of costs and advice please contact Lynne, Tuesday, Wednesday and Thursdays on 07733 227374. **Enquiries welcome from Bedford and surrounding villages in North Bedfordshire.**

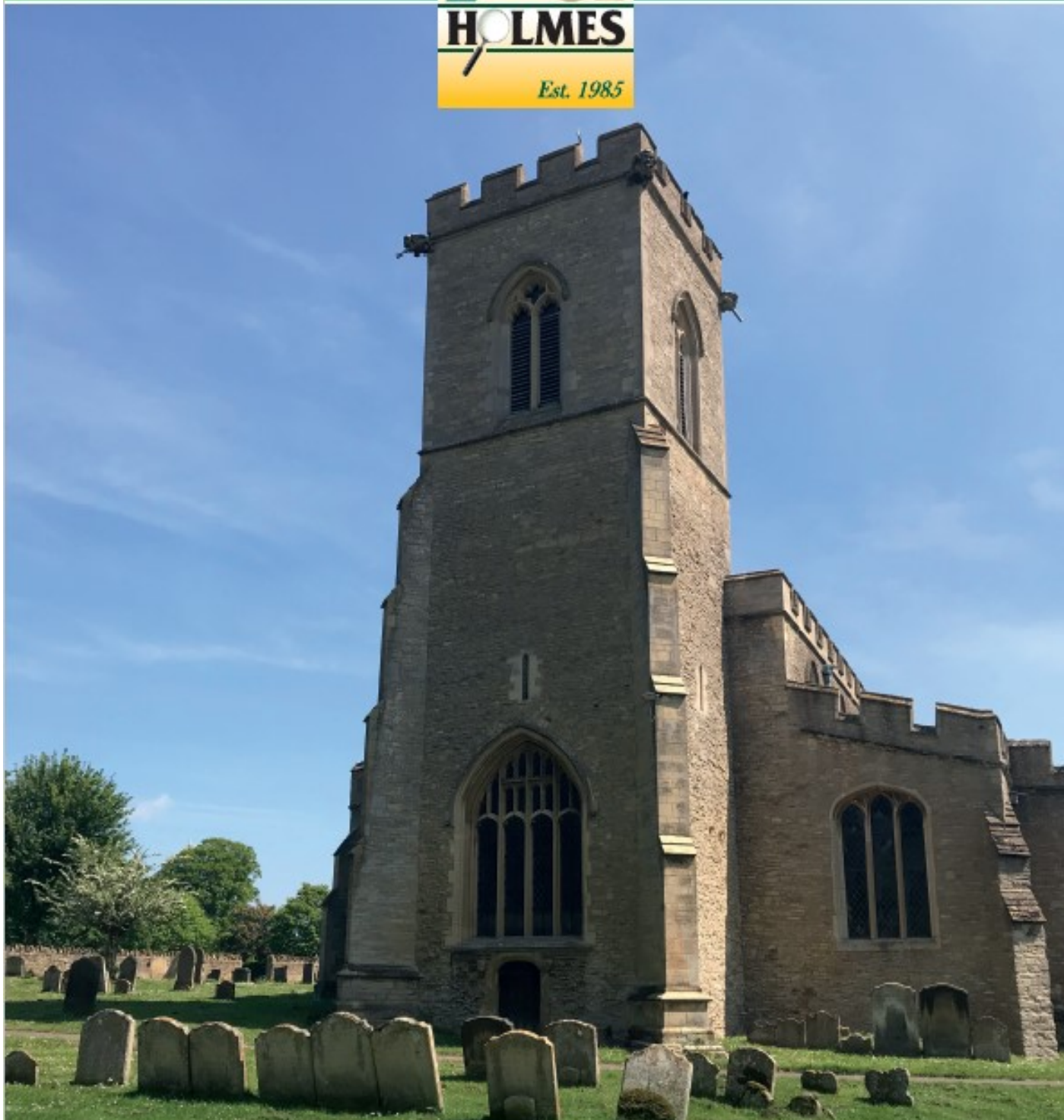
David Swallow

Sales, Lettings & Auctions



MAYFAIR
OFFICE GROUP

move
withUS



Your Local Property Experts with Regional & National coverage. Successfully selling homes since 1985... talk to us.



Andrew Holmes



Nick Kier



Ravi Dasgupta

01234 327744 | sales@laneandholmes.co.uk

JUST INLINE JUST INLINE WINDOWS

WINDOWS, DOORS & CONSERVATORIES

EMAIL: info@just-inlinewindows.co.uk

WEB: www.just-inlinewindows.co.uk

TEL: 01234 826740 | 07817 129744



WINDOWS / DOORS / UPVC / ALUMINIUM / BIFOLDS / LANTERNS

Just Inline Windows is a Bedfordshire-based double glazing business specialising in all aspects of glazing installations. We are based in Oakley and cover Bedford, Milton Keynes, Northampton, Luton & surrounding areas. We have a reputation built on high quality services, great value and an exceptional level of customer service and aftercare.



LOTS OF LOCAL RECOMMENDATIONS
CONTACT US FOR MORE INFORMATION

Oakley Allotments

Just when you thought conditions had been bad enough over winter...

Cold and wet were replaced by cold and dry and did nothing to help growers, who had been hoping for the arrival of a warm and helpful spring. April, usually the month when everything (including grass and weeds) starts to grow enthusiastically, was exceptionally dry and cold.



We have a rain gauge at home and April gave us a record low 8 millimetres of rainfall for the entire month. Average temperatures for April in our region were a maximum of 13 degrees C and a minimum of 4 degrees, with many overnight frosts. The only advantage of these low temperatures was that the spring flowers remained fresh and glorious for a good number of weeks. May continues cold but wet, with a rainfall, so far, of 87 millimetres – 25 millimetres of rain was recorded in our gauge on the 13th to 14th of May alone!

The allotments are now starting to thrive again and the newly-revived management committee will work on some improvements over the coming months. We have a waiting-list of 10 now so we need to ensure that the less well-used ground is made available for those who want it. Allotments will only be available for Oakley residents now that demand is so high.

Sadly, we have lost two of our older tenants; our condolences go out to their families and friends.

Steve Nicholas

Snippet No.51

The largest number of tyres manufactured in the world annually is by...LEGO.

(More amazing, interesting and, possibly, useless facts to come in future Snippets).

Steve Nicholas

Oakley.IT
maintain . IT
repair . IT
train . IT

CompTIA
A+
CERTIFIED
recommended
pc repair company

Jan Rymarz – Principal IT Technician / Trainer

Fast PC and Laptop Repairs
Clear and Friendly Training
Fast and Efficient Service
Years of experience and services covering everything!

A few recent customer comments
"Great service"
"Trustworthy & reliable"
"Efficient & Affordable"
"Highly recommended"

100% Satisfaction
Regular Feedback Online

07401 250 118
help@oakleyit.co.uk | www.oakleyit.co.uk



Oakley Village Hall

Church Lane,
Oakley,
Bedfordshire, MK43 7RJ

A well-appointed village hall
Main hall with stage and PA system
(Main hall is air conditioned)

Separate meeting room with bar

Well equipped kitchen

For information and bookings
please telephone 07788 796996



INTERIOR ♦ EXTERIOR ♦ DOMESTIC ♦ COMMERCIAL

Professional & Reliable Local Decorators

SPECIALISTS IN WALLPAPER HANGING

DUSTLESS SANDING

AIRLESS SPRAYING



EXTENSIVE PORTFOLIO

TESTIMONIALS FROM CLIENTS AVAILABLE



TEL: 01234 824173

MOB: 07743 176201

EMAIL: info@oakhamdecorators.co.uk

WEBSITE: www.oakhamdecorators.co.uk

BADMINTON

Get fit whilst socialising at
Oakley badminton club 😊

WEDNESDAY NIGHT

7:30-9PM

LINCROFT SCHOOL

For further details call Alyn Walker –
01234 824530 or 07557 441206

NIGEL L. WILLE

PLUMBING & HEATING ENGINEER

GAS SAFE REGISTERED

BOILER REPLACEMENTS

FULL CENTRAL HEATING INSTALLATION

BATHROOM SUITES

RADIATOR REPLACEMENTS

TAP REPLACEMENTS

ALL DOMESTIC PLUMBING, HEATING WORK
AND REPAIRS UNDERTAKEN

FOR A FRIENDLY SERVICE
PLEASE CALL NIGEL

Tel: 01234 822962

Mobile: 07778 800595

Email: nigel.wille@sky.com





Services in St Marys' Church have resumed, but with limited numbers until social distancing restrictions are lifted. Everyone is welcome - just phone [Hilarie](mailto:Hilarie@bromhambenefice.org) to let us know you'd like to attend. Meanwhile, our weekly **10.30am Zoom services** continue every week including a joint service with Oakley Methodists on the 2nd Sunday. For times and dates of services, and Zoom links, see our website. To be added to our mailing list for weekly service updates please email Sarah (info below).

Services at Oakley Methodist have also resumed, with appropriate social distancing in place. For details, look on the church noticeboard, or the Post Office noticeboard. For those unable to attend in person, we are continuing to provide an emailed service each week. Please contact Jeanette Letch for details.



We are hoping to re-open our very popular Messy Church Groups in September after a long absence due to the pandemic.

'Messy Church' meets every Thursday in term time at St Mary's at 10am and is for pre school aged children and their carers. 'Messy Church for All' meets at Oakley Methodist church on the 3rd Tuesday of every month at 3.30pm and is for all children from 0-100! There are lots of fun things to do (some are messy!) and refreshments are provided. We finish with a short celebration.

If you would like further information please visit our website www.bromhambenefice.org and go to the Young People page



CONTACTS

St Mary's: Rev Catherine Wilson 01234 825665 vicar@bromhambenefice.org

Church Wardens: [Hilarie Worley](mailto:Hilarie@bromhambenefice.org) 262166 & Graham Palmer 07710 462535

Administrator: Sarah administrator@bromhambenefice.org Website: www.bromhambenefice.org

Oakley Methodist Church: Rev Gill Baalham 01234 930025 gill.baalham@methodist.org.uk

Church Steward: Jeanette Letch 825204

Oakley Toddlers Group



Come and join us every Monday 9.30 - 11.00am term time only in the Village Hall.

We are a friendly local community run group that has been going since the 1970's. We aim to offer a place for mums, dads, babies, toddlers and carers to socialise together and help start some of the building blocks towards our little ones development.

Your first visit is free then only £2.00 for your first child and £1 for each child thereafter.

Children must be supervised at all times (we do not offer childcare)

NAO Cattery

BOOK NOW!



07411 136691

naoservices111@gmail.com

www.naoservices111.weebly.com

Bramble Lodge, 29 Oakley Road, Clapham, Bedford MK41 6AN

**Opening Hours: 9.00-11.00 Mon-Sat & 18.00-19.00hrs Mon-Fri
Sunday and Bank Holidays Closed**

* Note that all boarding cats must be healthy on arrival and fully inoculated against cat flu and contagious enteritis. Terms and Conditions apply, charge includes insurance and vet on call.

NAO Cleaning

- Regular cleaning (Weekly, Fortnightly, Monthly etc)
- Home Care Cleans
- Spring cleans
- Moving In & out clean
- Builders before and after clean
- Tenancy beginning & end clean

**FOR A FREE ESTIMATE CALL TODAY ON
07411 136691**

Bramble Lodge, 29 Oakley Rd, Clapham, Bedfordshire MK41 6AN
www.naoservices111.weebly.com
naoservices111@gmail.com

We cover all of Bedfordshire

HIRE THE OLD SCHOOL

Lovell Road, MK43 7RX,
Reg. Charity No. 1119074

- *Hall available for regular and one-off bookings at weekends*
- *Meeting Room available for regular and one-off bookings weekdays and weekends*
- *Meeting room now with self-contained facilities*



Please contact :

Bill Sellars 07980 745292

Email: billsellars@theoldschooloakley.org.uk

Web : www.theoldschooloakley.org.uk

RP TESTA

PLUMBING & HEATING SERVICES LIMITED

A professional service with over 25 years experience :

All general plumbing requirements
and full design & installation for:

- ◆ CENTRAL HEATING inc. LPG
- ◆ BATHROOMS inc. tiling etc.
- ◆ UNDERFLOOR HEATING
- ◆ UNVENTED HOT WATER



FOR A LOCAL AND RELIABLE SERVICE CALL

T: 01234 781827

www.testaplumbingandheating.co.uk



OAKLEY WI

It is with regret that I have to inform you that Oakley WI is being suspended.

If in the future some members of the Village would like to restart the WI they would be very welcome by Bedfordshire Federation.

Vivian Kirk

OAKLEY GARDENING CLUB

Dear members unfortunately the booked meetings have been cancelled.

Please keep an eye on the notice boards for information.

We are hoping to meet again in September

For further information contact Denise Hookham on 01933 312119



For all Pre-School Children
At St Mary's Church Oakley on

Thursdays during School Term 10am to 11.45

Crafts, Painting, Play, Music, Stories and a Healthy Snack plus tea/coffee for the adults

More detail from Dorothy Palmer at
01234 823959



SYDNEY HOWARD LOVELL MEMORIAL ALMHOUSES AT OAKLEY

The Lovell Homes is a small independent living community comprising two bedroomed bungalows and one/two bedroomed flats

Applicants over the age of 60 are invited to apply to go on the register of interest for a property - priority will be given to those with an agricultural or related background.

If you would like to be considered please visit the website www.lovellhomesoakley.co.uk

Or contact the Clerk :

Mandy Newton

On 07736 466965

Registered Charity Number : 200480

oakley Motorcycle club

Well fingers crossed, provided we do not get hit by any new variants and the COVID rates continue to fall, OMC will be back on from Thursday 24th June! We are looking at the feasibility of doing a "ride in" from two locations on that evening, weather permitting, so watch Facebook for further details. Should be quite a spectacle

Although the American theme evening will not be going ahead this year, as that may be a bridge too far after coming out of lockdown, we will still be looking at getting some dealer nights off the ground. All being well we expect a visit from the British Endurance Racing Team (B.E.R.T) with their bikes and crew. We might even throw in a bike jumble to raise funds for the East Anglian Air Ambulance (EAAA).



We have again been nominated by our EAAA Representative for an award from the EAAA in the Most Inspirational team, Group, Club category. This is on top of OMC being included on the new wall of major donors at the new EAAA office, Helimed House, Norwich.

A location for a ride out and OMC photo shoot in front of the wall has been suggested by the EAAA, sounds good to me!

Furthermore we have a new website in the pipeline which is likely to be launched in the next few weeks, courtesy of Robbie at Bays Media.



Obviously we have not been able to hold an AGM which had been due last February. None of us really fancied doing a Zoom or Teams meeting as that involves technology that I cannot get my head round. Thankfully our Vice Chair Derek Brown can, so we have been able to hold committee meetings via Zoom.

We will be looking at holding a low key AGM in August, date to be confirmed, which will just cover nominations of club Committee and Officers together with the OMC accounts for 2020/21. Hopefully normal AGM service will resume in 2022.

Keep an eye on Facebook for updates and news

Looking forward to seeing the old faces and picking up where we left off

Stay safe, Baysie

Roger Bays - Chair OMC



Oakley Educational Foundation

This Foundation exists to assist young people between the ages of 16 and 25, who live in the Parish, with grants towards the cost of books and tools, etc. in furtherance of their education.

Applications are accepted in the months of May and November and must be accompanied by receipts of purchase. Application forms can be obtained from the Clerk, Louise Tunley.

For further information, or for an application form, please contact Louise Tunley on 07917 462213, by post at 19 Goldington Road, Bedford, MK40 3JY or by email at louise_tunley@yahoo.co.uk.

Classic Car Meet In Bedfordshire

The guys at Beds Classic Car Meet are hopeful of a bumper showing of vintage and classic cars this summer starting Tuesday 29th June at Oakley Sports & Social Club.

This event first started in 2019 on the 2nd Tuesday of the month through April to September and by the last two dates they were getting 120 plus show cars on the Oakley Club field. It was hugely popular with classic car owners, enthusiasts and local villagers.

Obviously due to COVID they have not been able to meet in 2020 but are really looking forward to re-starting on 29th June. To make up a bit of time, rather than just the 2nd Tuesday of the month, they will be here the 2nd and 4th

Tuesdays for July and August starting from 6pm. The last meet will

be in September. Entry is free and they would love for all of you to come along, see the cars, ask the owners questions, have a drink and something to eat.



The dates for the diary are

29th June

13th July

27th July

10th August

24th August

7th September



Auction Sales & Valuations

Valuation, collection and auction service of individual items through to complete property and commercial clearances.

Call for a free no obligation quote or email info@peacockauction.co.uk

SALE ENTRIES NOW INVITED

www.peacockauction.co.uk

Eastcotts Park,
Wallis Way,
Bedford, MK42 OPE

01234 266366

the 
café
AT
W&H PEACOCK
AUCTIONEERS & VALUERS



View the salerooms for our upcoming auctions and then relax with a coffee and a slice of cake.

Our unique café in Bedford Auction Centre with free wi-fi, air conditioning and views of the salerooms, comfortably seats over 100 customers.

10% OFF WITH THIS ADVERT
Mon-Thurs only T&C's apply Ref: Oakley

Visit www.peacockscfe.co.uk for further details and to view our current menu.

Open Monday to Thursday from 8.30am - 3.30pm
Extended opening on Friday to 7pm. Saturday 8.30am - 4pm
(Last orders 1 hour before closing)

Eastcotts Park, Wallis Way, Bedford, MK42 OPE

01234 266 366



Oakley Sports & Social Club

Family & Sports Bar

OPEN DAILY FROM 12PM

KITCHEN: WED - SAT 12PM - 9PM :: SUN - TUES 12PM - 5PM

PIZZA MENU 12"

Margherita (V) **£7**
Tomato sauce, Mozzarella

Pepperoni **£8**
Tomato sauce, Mozzarella, Pepperoni

Meat Feast **£9**
Tomato sauce, Chili beef, Pepperoni, Spicy Chicken

Vegetarian Pizza **£7**
Mixed peppers, Red Onion, Mushrooms, sweetcorn, Mozzarella

Garlic Butter & Mozzarella Pizza **£7**

Ham, Mushroom & Mozzarella **£8**
Ham, Mushroom, Tomato sauce, Mozzarella
Gluten free pizza bases are available on request

BURGER MENU

All burgers served in a brioche bun with lettuce, tomato & side of chips and your sauce of choice.

Steak Gourmet Burger **£7**

Gourmet minted lamb burger **£7**

Vegetarian Burger **£7**
Plant-based

Crispy Chicken Burger **£6**
Two 3oz battered chicken fillets

Southern Fried Chicken Burger **£6**
A 6oz Southern fried chicken breast

Add Cheese 50p Add Bacon 50p

Gluten free buns are available on request.

BEST OF THE REST

Fish and Chips **£6**

Sausages & chips **£5**
2x sausages

Southern Fried Chicken strips & chips **£5**

Chicken goujons & chips **£4**

6x Mozzarella sticks **£3**

6x Onion rings **£3**

Chilli Cheese Bites **£3**

Chicken Breast Bites **£3**

**WE HAVE A FULL RANGE OF
CONDIMENTS AND GHERKIN SLICES
AVAILABLE. PLEASE ASK WHEN
ORDERING.**

OPEN FOR TEA & COFFEE
TEL: 01234 824977

SUPPORT LOCAL

Oakley Sports & Social Club is a registered charity who's primary aim is to cater for the local community

OAKLEY SPORTS & SOCIAL CLUB, CHURCH LANE, OAKLEY, BEDFORDSHIRE MK43 7RJ :: 01234 824977 :: WWW.OAKLEYSSC.COM